

AB300A Server Console Solution User Guide



July 2004 (Second Edition)
Part Number AB300-90003

© Copyright 2004 Hewlett-Packard Development Company, L.P.

The information contained herein is subject to change without notice. The only warranties for HP products and services are set forth in the express warranty statements accompanying such products and services. Nothing herein should be construed as constituting an additional warranty. HP shall not be liable for technical or editorial errors or omissions contained herein.

Microsoft®, MS Windows®, Windows®, and Windows NT® are U.S. registered marks of Microsoft Corporation. Intel®, Pentium®, Intel Inside®, and the Intel Inside logo are trademarks or registered trademarks of Intel Corporation or its subsidiaries in the United States and other countries. UNIX® is a trademark of The Open Group.

Printed in the U.S.A.

AB300A Console User Guide

February 2004 (First Edition)
Part Number AB300-90001

July 2004 (Second Edition)
Part Number AB300-90003

Contents

Abstract	5
Audience Assumptions	5
AB300A Contents	5
Connecting the Console to the Server	6
Thin Client Front Components.....	6
Thin Client Rear Components	7
Configuring the AB300A as an RS-232 Console	8
Creating a Terminal Emulator Session	8
Creating the Auto Log On User Account.....	11
Configuring the TEC Session to Launch at Reboot.....	11
Additional Reference Information	13
HP Compaq Thin Client t5500 Options	14
Warranty and Support	14
FRU Parts List	14
Cables.....	14
Thin Client	15
Monitors	15
Keyboards	15
Miscellaneous Parts	16

Abstract

This guide provides instructions for using the HP AB300A Server Console Solution. This solution uses an HP Compaq Thin Client T5500 as a terminal emulator for the HP9000 and Integrity servers.

The HP 9000 and Integrity servers use a character cell ("dumb") terminal over a serial RS232 connection to act as the console for the system. This approach is used because the console has to be able to communicate with server hardware over a simple link that does not require an active server OS. Traditional dumb terminals offer limited functionality and they are increasingly difficult to supply.

Audience Assumptions

This guide is intended for the person who installs and administers servers.

AB300A Contents

The AB300A HP9000 & Integrity Server Console Solution Bundle includes the following components:

1. HP Compaq Thin Client t5500 Thin Client (DC641A#xxx)
2. HP S5500 15" VGA Monitor (P9006A#xxx)
3. USB Keyboard and Mouse
4. DB9 Serial Cable (5184-1894)
5. AC Power Adapter
6. 2 Power Cords

Connecting the Console to the Server

The RS-232 port on the thin client is connected to the serial console port on the server. The connection is made with the DB9 Serial Cable (5184-1894) included in the server console solution bundle.

NOTE: The HP Compaq Thin Client t5500 in the console bundle is a fully functional thin client and supports the full range of thin client connections. However, the AB300A console solution bundle is intended to provide RS-232 direct connect terminal emulation connection support only.

Thin Client Front Components



Figure 1: Front Components

Table 1: Front Components

Item	Description
1	On/Off switch

Thin Client Rear Components

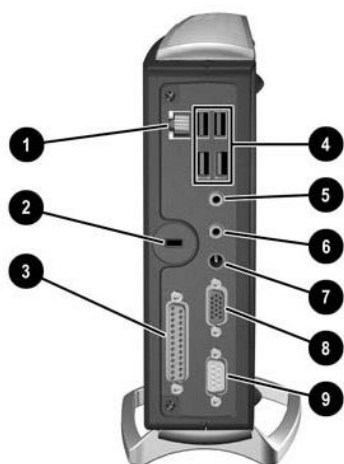


Figure 2: Rear Components

Table 2: Rear Components

Item	Description
1	Ethernet RJ-45 connector
2	Cable lock slot
3	Parallel connector (burgundy)
4	Universal Serial Bus (USB) connectors (4)
5	Line-in audio, microphone (pink)
6	Line-out audio, headphone (lime)
7	Power connector (12V, 3.33A DC)
8	Graphic connector (blue)
9	Serial connector (aqua)

Configuring the AB300A as an RS-232 Console

The following section describes how to create a terminal emulator session, how to create an auto log on user account, and how to configure the terminal emulator session to automatically launch when the thin client is rebooted for any reason.

NOTE: There is currently no method of saving these configuration parameters to a file that can be retrieved at a later time. Therefore, it is imperative that all configuration parameters are recorded for future use.

Creating a Terminal Emulator Session

To create a terminal emulator session, perform the following steps:

1. Connect the HP Compaq Thin Client T5500 unit using the supplied DB9 Serial Cable (5184-1894) to the serial port of the HP9000 server.
2. Select **Start > Programs > Connection Administrator**.
3. Press the **Add** button.
4. Choose **Terminal Emulation**
5. From the HP Connection Window, run the New Terminal Emulation wizard.
6. Create a **Connection Name** for this session.

NOTE: Please note that the console solution supports two of the available teemCE emulations: VT 100 and HP 700-92/96.

7. If using the HP700-92/96 emulation mode, click the **Emulation** dropdown list to select the **HP700-92/96** emulation mode. Click the **Terminal ID** dropdown list to select **70092** and click **Next**.

TE Client Connection Wizard - Connection Information

Connection Name:

Emulation:

Terminal ID:

Operating Language:

Figure 3: Connection Information

8. If selecting the VT100 emulation mode, click the **Emulation** dropdown list to select the **VT100** emulation mode. Enter the required **VT Terminal ID** setting and click **Next**.
9. Select **Serial** option, and click the **Configure** button.

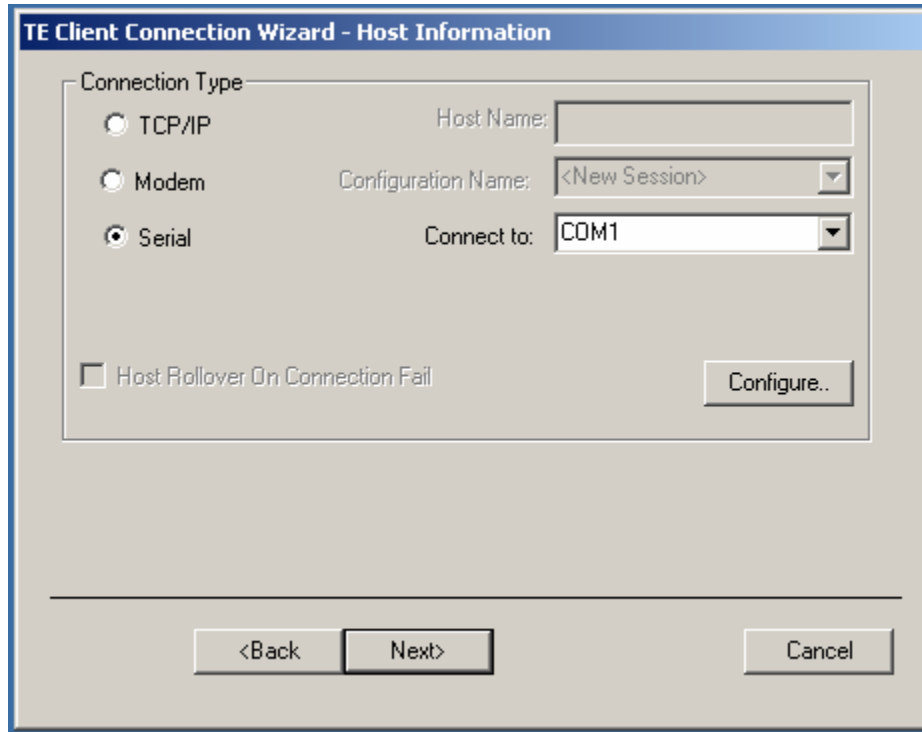


Figure 4: Host Information

10. Select **None** in the **Flow Control** dropdown list.

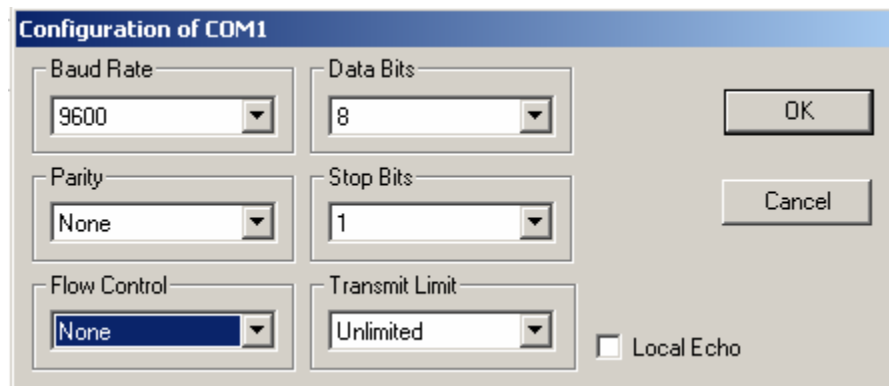


Figure 5: Configuration of COM1

11. Click **OK** button to accept and close the **Configuration of COM1** dialog box.
12. Click **Next** on the **Host Information** window.
13. From the **Advanced Options** page, choose preferred options.
14. The Connection Wizard will create an icon with the same name you chose for the Connection Name. This icon will appear in the HP Connection window and on the desktop. Click this icon to launch the terminal emulation session.
15. Press the **Enter** key to access the log in prompt.
16. To log in, enter the user name and user password assigned by the System Administrator.

Creating the Auto Log On User Account

1. Create a login user by selecting **Start > Settings > Control Panel**.
2. Double click the **Security** icon and select the **Users** tab.
3. Create a new user, such as “vt-100 user”, by clicking **Add** and entering the new user name. Click OK.

NOTE: Do not assign a password for the new user at this time.

4. Select the **System** tab on the **Security** screen. Select the new user name you just created as the account by clicking on the “Account” drop down menu and selecting the new user name. Click OK.
5. Close the **Control Panel** by clicking on the **X** in the upper right hand corner of the screen.

Configuring the TEC Session to Launch at Reboot

1. Create a TEC session using one of the above mentioned methods. Assign a name to the connection, such as " connection1 (TEC)."
2. Select **Start > Programs > Connection Administrator**
3. Click the **Advance** button.
4. Select the “**Global UI**” tab.
5. Select the “**Auto Start Connection Administrator when logging into Windows**” tab.

NOTE: When creating a new profile, a default name of “New Profile” is created. Highlighting the newly created profile name, then single-clicking within the name text will allow the name to be modified.

6. Select the “**Assign Connection**” tab.
7. Select the proper User in the drop down.
8. On the available connection window on the left, double click on the TEC session name created earlier.
9. On the right hand side of the screen, single click the “No” under auto.
10. Under **Connection Options**, select the **Automatically Connect** option. Under **Windows Start Mode**, select **Kiosk**. Click **OK**.
11. Reboot. The TEC session will launch at reboot.

NOTE: When using “Kiosk” mode within the “Windows Start Mode”, the only application available for the user will be the configured terminal emulator after a thin client reboot. When using the “Auto” mode within the “Windows Start Mode”, the emulator will automatically launch after a thin client reboot, but full system access will be available to the user.

If “Kiosk” mode is selected, and the administrator wishes to access administrative features of the thin client, then the thin client must be rebooted. **The reboot must be performed by recycling power on the thin client.** During the reboot, a small window will appear with a 5 second countdown. During this countdown, simultaneously pressing the “Alt” and “F4” buttons will interrupt the boot, and allow the administrator to log in. If the administrator password has been set, the password will also be required.

NOTE: Modes other than “Kiosk” can be selected. The following is a description of all available modes:

Auto: Automatically starts HP Connection Administrator, HPConnection Window, and Windows Explorer.

Manual: Automatically starts Windows Explorer and HPConnection Window. There is an HP Connection Administrator option in the Start menu and an HP Connection Administrator icon in the HP Connection Window that can be selected to run HP Connection Administrator.

Shell: This mode is used to lock down the terminal with limited functionality. This automatically starts HP Connection Administrator without access to Windows Explorer.

Kiosk: This mode is used to fully lock down the terminal. It automatically runs the Connection with no user interface. If you want the terminal to run in Kiosk mode, you **MUST** select the **Automatically Connect** and **Automatic Failure Recovery** Connection Options at the Profile level.

Additional Reference Information

For additional reference information on configuring and using the AB300A components, please refer to the following documents.

Table 3: Thin Client Documentation

Title	Part Number
Compaq Terminal Emulation Quick Reference Guide: Extended Emulation	287004-00x
HP Compaq Thin Client t5000 Series Troubleshooting Guide	335795-00x
Hardware Reference Guide: HP Compaq Thin Client t5000 Series	334457-00x
Administrator's Guide: Microsoft Windows CE .NET-based Thin Clients	349401-00x

Additional information about the HP CRT Monitor s5500 can be found at <http://www.hp.com/products/monitors/>

HP Compaq Thin Client t5500 Options

NOTE: The console solution should generally be kept as configured for the HP9000 and Integrity servers. Adding optional hardware components is not recommended nor is it supported by HP.

Warranty and Support

Your AB300A Console Solution Bundle includes a 3-year next-day on-site warranty. For service and support on all components of the AB300A bundle, contact your local HP9000 and Integrity Server support service center.

NOTE: Please use your HP9000 Server or Integrity Server system information when calling the HP service center for AB300A support.

FRU Parts List

Cables

Table 4: Cables

FRU Description	Replace FRU Part Number	Exchange FRU Part Number
UK Power Cord	8121-0739	N/A
North America Power Cord	8121-0740	N/A
Europe Power Cord	8121-0731	N/A
Switzerland Power Cord	8121-2104	N/A
Denmark Power Cord	8121-6814	N/A
Japan Power Cord	8120-4753	N/A
Australia Power Cord	8121-0730	N/A
South Africa Power Cord	8121-5341	N/A
Latin America Power Cord	8121-0673	N/A
Chilean Power Cord	8120-8389	N/A
Argentina Power Cord	8120-8390	N/A
Israel Power Cord	8120-6800	N/A
China Power Cord	8120-8376	N/A
Cable, Serial Laplink	5184-1894	N/A

Thin Client

Table 5: Thin Client

FRU Description	Replace FRU Part Number	Exchange FRU Part Number
Console (Thin Client) Base Unit	N/A	325698-001

Monitors

Table 6: Monitors

FRU Description	Replace FRU Part Number	Exchange FRU Part Number
SPS-MON S5500 NH-NA-JPN	261601-553	331751-003
SPS-MON S5500 MPR, NH-EMEA	261601-663	331752-004
SPS-MON S5500 SH	261601-656	331752-006
SPS-MON S5500 EH	261601-559	331751-009

Keyboards

Table 7: Keyboards

FRU Description	Replace FRU Part Number	Exchange FRU Part Number
US English	326227-001	N/A
Europe-English	326227-B31	N/A
Germany-German	326227-041	N/A
Spain-Spanish	326227-071	N/A
France-French	326227-051	N/A
UK English	326227-031	N/A
Finland-Finnish	326227-351	N/A
Italy-Italian	326227-061	N/A
Japan-English	326227-291	N/A
Brazil	326227-221	N/A
Mexico	326227-161	N/A

Miscellaneous Parts

Table 8: Miscellaneous

FRU Description	Replace FRU Part Number	Exchange FRU Part Number
Mouse	323615-001	N/A
Console (Thin Client) Adptr AC-DC 12V	325709-001	N/A
Ft Stand w/screws	336604-001	N/A

Free Manuals Download Website

<http://myh66.com>

<http://usermanuals.us>

<http://www.somanuals.com>

<http://www.4manuals.cc>

<http://www.manual-lib.com>

<http://www.404manual.com>

<http://www.luxmanual.com>

<http://aubethermostatmanual.com>

Golf course search by state

<http://golfingnear.com>

Email search by domain

<http://emailbydomain.com>

Auto manuals search

<http://auto.somanuals.com>

TV manuals search

<http://tv.somanuals.com>