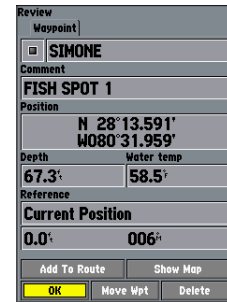


Marking a Waypoint

To mark your current location:

1. Press and hold **ENTER/MARK** until the Review Waypoint Page appears, and then release it. The GPSMAP 392/398/492/498 captures its current location and creates a default name and symbol for the new waypoint.
2. To accept the waypoint with the default information, press **ENTER**, or to change any waypoint information, highlight the appropriate field and press **ENTER**.



Review Waypoint Page

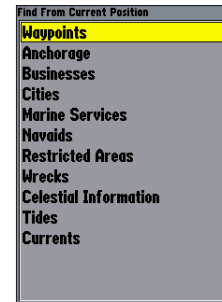
To create a new waypoint from a map feature:

1. Use the **ROCKER** to move the pointer and highlight the map feature you want.
2. Press **ENTER/MARK** to capture the pointer location. The Review Page for the selected map feature appears.
3. Press the **Create Wpt** soft key to open the Review Waypoint Page.
4. To accept the waypoint with the default information, press **ENTER**.

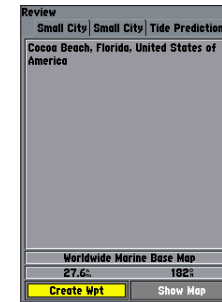
Finding an Item

To find an item from your current location:

1. From any page, press **FIND** to open the Find From Current Position Page.
2. Highlight a category, and press **ENTER**. For some categories, you might need to select multiple subcategories.
3. Highlight an item in the search results list, and press **ENTER**. The Review Page appears showing item information, map location, chart name, distance/bearing, and options for creating a waypoint or viewing the next item in the search results list.



Find From Current Position



Review Page

GPSMAP[®] 392/398/492/498

quick reference guide



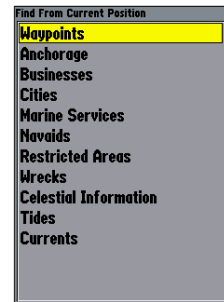
Navigating to a Destination

To use the NAV key:

1. Press **NAV** to access the Navigation menu.
2. Highlight **Go To Point**, **Follow Route**, **Follow Track**, or **TracBack**, and press **ENTER**.
3. Use the **ROCKER** to highlight a point, track, or route from the list, and press **ENTER**.
4. If you selected a point, press **ENTER** again with **Go To** highlighted. If you selected a route or saved track, choose from the selections, and press **ENTER** to begin navigation.



Navigation Menu From Present Location



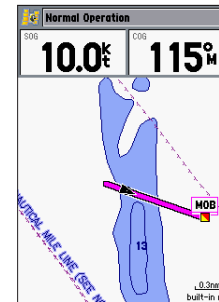
Go To Point—Find From Current Position

MOB (Man OverBoard)

The GPSMAP 392/398/492/498's Man OverBoard function (MOB) simultaneously marks and sets a course back to the marked location for quick response to emergency situations.

To start the MOB function:

1. Press and hold **NAV/MOB**.
2. Press **ENTER** to begin navigating to the **MOB** location.
3. To stop navigation to the **MOB** location, press **NAV**, highlight **Stop Navigation**, and press **ENTER**.

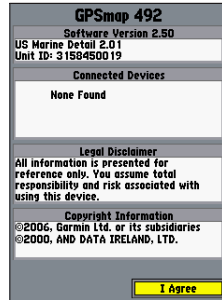


MOB Navigation Back to a Location

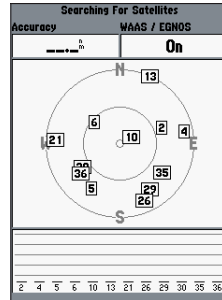
Startup/Shutdown Sequence

To turn on the GPSMAP 392/398/492/498:

1. Press and hold the **POWER** key until the power tone sounds, and then release the **POWER** key. The title page, and then the Warning Page appears while the unit conducts a self-test.
2. When the self-test is complete, press **ENTER** to agree and acknowledge the warning.



Warning Page



Satellite Page

To turn off the GPSMAP 392/398/492/498:

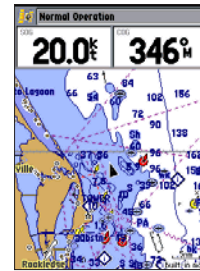
1. Press and hold the **POWER** key.
2. When the screen is blank, release the **POWER** key.

Main Pages

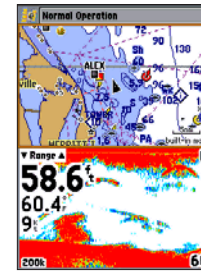
The GPSMAP 392/398/492/498 contains seven main pages.

To cycle through main pages:

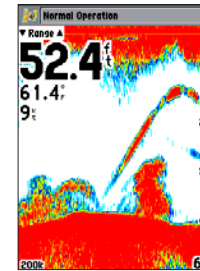
Press **PAGE**.



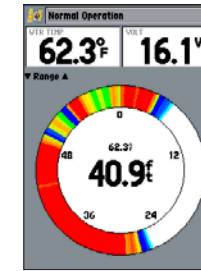
Map Page



Map Split Page



Sonar Page



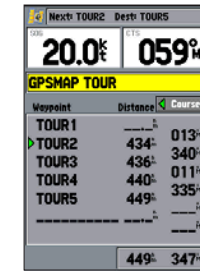
Flasher Page



Compass Page



Highway Page



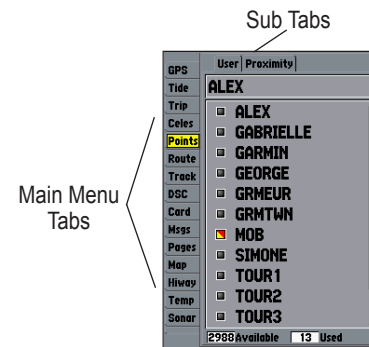
Active Route Page

The Map Split, Sonar, and Flasher Pages do not appear unless the unit is receiving sonar information.

Main Menu

To change a setting using the Main Menu:

1. From any page, press and hold the **ADJ/MENU** key to open the Main Menu.
2. Use the **ROCKER** to select a tab, and then press right or left on the **ROCKER** to select a sub tab.
3. Highlight the field you want to change, and press **ENTER**.
4. Make any changes, and press **ENTER**.
5. Press **QUIT** to return to the main page.

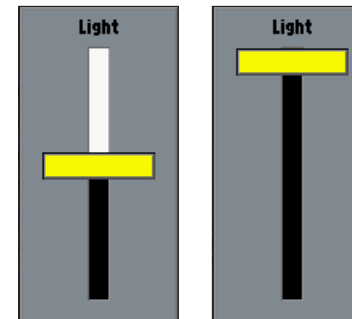


Main Menu

Adjusting the Backlight

To adjust the backlight level:

1. Press and release the **POWER** key.
2. Press up or down on the **ROCKER** to adjust the backlight level.
3. Press **ENTER** to accept.



Keypad Usage



POWER/BACKLIGHT—press and hold for two seconds to turn the unit on or off. Press and release to adjust the screen backlighting.



RANGE—press Up to increase, or press Down to decrease the range of the Map Page, Highway Page, and other range-related functions.



ROCKER—press up, down, right, or left to move through lists, highlight fields, select options and locations, enter data, or move the map pointer.



PAGE—press to cycle through the main pages in sequence and return the display from a sub page to a main page.



QUIT—press to return to a previous page, restore a data field's previous value, and exit out of menus.



ENTER—press to select highlighted fields, confirm menu options and enter data.

MARK—press and hold for two seconds to capture your current location and open the Review Waypoint Page.



ADJ—press to show available options and features for the current function.

MENU—press and hold to open the Main Menu.



NAV—press and release to access navigation options.

MOB (Man OverBoard)—press and hold to mark your current location and instantly set a return course.



DATA—press to toggle the display of a main page with/without function windows and data fields.

CNFG—press and hold to open the Configuration window to customize main pages.



FIND—press to initiate the Find options, so you can search for user points, map items, and any optional data card information.

Free Manuals Download Website

<http://myh66.com>

<http://usermanuals.us>

<http://www.somanuals.com>

<http://www.4manuals.cc>

<http://www.manual-lib.com>

<http://www.404manual.com>

<http://www.luxmanual.com>

<http://aubethermostatmanual.com>

Golf course search by state

<http://golfingnear.com>

Email search by domain

<http://emailbydomain.com>

Auto manuals search

<http://auto.somanuals.com>

TV manuals search

<http://tv.somanuals.com>