

## **GPSMAP® 278** *chartplotter receiver*



© 2009 Garmin Ltd. or its subsidiaries

Garmin International, Inc.  
1200 East 151st Street,  
Olathe, Kansas 66062, USA  
Tel. (913) 397.8200 or (800) 800.1020  
Fax (913) 397.8282

Garmin (Europe) Ltd.  
Liberty House  
Hounslow Business Park,  
Southampton, Hampshire, SO40 9RB UK  
Tel. +44 (0) 870.8501241 (outside the UK)  
0808 2380000 (within the UK)  
Fax +44 (0) 870.8501251

Garmin Corporation  
No. 68, Jangshu 2nd Road,  
Shijr, Taipei County, Taiwan  
Tel. 886/2.2642.9199  
Fax 886/2.2642.9099

All rights reserved. Except as expressly provided herein, no part of this manual may be reproduced, copied, transmitted, disseminated, downloaded, or stored in any storage medium, for any purpose without the express prior written consent of Garmin. Garmin hereby grants permission to download a single copy of this manual onto a hard drive or other electronic storage medium to be viewed and to print one copy of this manual or of any revision hereto, provided that such electronic or printed copy of this manual must contain the complete text of this copyright notice and provided further that any unauthorized commercial distribution of this manual or any revision hereto is strictly prohibited.

Information in this document is subject to change without notice. Garmin reserves the right to change or improve its products and to make changes in the content without obligation to notify any person or organization of such changes or improvements. Visit the Garmin Web site ([www.garmin.com](http://www.garmin.com)) for current updates and supplemental information concerning the use and operation of this and other Garmin products.

Garmin®, the Garmin logo, GPSMAP®, AutoLocate®, TracBack®, BlueChart®, City Navigator®, MapSource®, and See-Thru® are trademarks of Garmin Ltd. or its subsidiaries, registered in the USA and other countries. These trademarks may not be used without the express permission of Garmin.



January 2009

Part Number 190-00691-00 Rev. B

Printed in Taiwan

## INTRODUCTION

Thank you for choosing the Garmin® GPSMAP® 278, which uses the proven performance of Garmin GPS and full-featured mapping to create an unsurpassed portable marine navigation chartplotter and automobile navigation device. Take a moment to compare the contents of this package with the packing list on the outside of the box; if any pieces are missing, contact your Garmin dealer immediately.

### About This Manual

To get the most out of your new navigation system, read this manual and learn the operating procedures for your unit. This manual is organized into the following sections:

The **Introduction** contains the Table of Contents, Care Information, Warnings and Cautions.

The **Getting Started** section provides an overview of the unit, how to turn the unit on, and how to simulate navigation.

The **Marine Mode** section provides you with information about navigating with the GPSMAP 278 in Marine Mode.

The **Marine Mode Pages** section reviews the main pages in Marine Mode.

The **Automotive Mode** section provides you with information about navigating with the GPSMAP 278 in Automotive Mode.

The **Automotive Mode Pages** section reviews, in detail, the main pages and features in Automotive Mode, such as the Trip Data Page and creating waypoints.

The **Main Menu** section describes features found on the Main Menu, and information on how to change settings.

The **Using Sonar** section provides instructions on using a Garmin GSD 20 or GSD 21 sounder with your GPSMAP 278.

The **Appendix** contains specifications, optional accessories, maintenance information, and other product information.

An **Index** is provided at the end of the manual for reference.

### Manual Conventions



This manual uses the term **Warning** to indicate a potentially hazardous situation, which, if not avoided, could result in death or serious injury.



This manual uses the term **Caution** to indicate a potentially hazardous situation, which, if not avoided, may result in minor injury or property damage. It may also be used without the symbol to alert you to avoid unsafe practices.

## TABLE OF CONTENTS

<b>Introduction</b> .....	<b>i</b>	<b>Marine Mode Pages</b> .....	<b>42</b>
<b>About This Manual</b> .....	<b>i</b>	<b>Map Page</b> .....	<b>42</b>
<b>Caring for the GPSMAP 278</b> .....	<b>iv</b>	<b>Compass Page</b> .....	<b>49</b>
<b>Warning</b> .....	<b>v</b>	<b>Highway Page</b> .....	<b>52</b>
<b>Battery Warnings</b> .....	<b>vi</b>	<b>Active Route Page</b> .....	<b>54</b>
<b>Important Information</b> .....	<b>vi</b>	<b>Position Data Page</b> .....	<b>55</b>
<b>Getting Started</b> .....	<b>1</b>	<b>Automotive Mode</b> .....	<b>56</b>
<b>Unit Overview</b> .....	<b>1</b>	<b>Automotive Mode Pages</b> .....	<b>56</b>
<b>Charging the GPSMAP 278</b> .....	<b>2</b>	<b>Navigating to a Destination</b> .....	<b>57</b>
<b>Turning Your GPSMAP 278 On or Off</b> .....	<b>3</b>	<b>Automotive Mode Pages</b> .....	<b>63</b>
<b>Adjusting the Backlight and Volume</b> .....	<b>3</b>	<b>Map Page</b> .....	<b>63</b>
<b>Getting Satellite Signals</b> .....	<b>4</b>	<b>Current Route Page</b> .....	<b>64</b>
<b>Using the GPSMAP 278 Keypad</b> .....	<b>7</b>	<b>Trip Computer Page</b> .....	<b>65</b>
<b>Using The GPSMAP 278</b> .....	<b>8</b>	<b>Main Menu</b> .....	<b>66</b>
<b>Using Simulator Mode</b> .....	<b>12</b>	<b>Main Menu Tabs</b> .....	<b>66</b>
<b>Marine Mode</b> .....	<b>13</b>	<b>GPS Tab</b> .....	<b>67</b>
<b>Marine Mode Pages</b> .....	<b>13</b>	<b>Route Tab</b> .....	<b>67</b>
<b>Navigating to a Destination</b> .....	<b>14</b>	<b>Points Tab</b> .....	<b>68</b>
<b>Finding an Item</b> .....	<b>17</b>	<b>Track Tab</b> .....	<b>68</b>
<b>Creating and Using Routes</b> .....	<b>22</b>	<b>DSC Tab</b> .....	<b>69</b>
<b>Creating and Using Waypoints</b> .....	<b>28</b>	<b>Sonar Tab</b> .....	<b>71</b>
<b>Managing Your Tracks</b> .....	<b>38</b>	<b>Alarms Tab</b> .....	<b>71</b>
		<b>Calendar Tab</b> .....	<b>73</b>
		<b>Celestial Tab</b> .....	<b>74</b>
		<b>Message Tab</b> .....	<b>78</b>

Display Tab..... 79  
Sound Tab ..... 80  
Setup Tab ..... 81  
Setting Up and Using Sonar .....90  
    Showing Sonar on the Map Page..... 90  
    Using the Sonar Page ..... 91  
    Setting Up Sonar ..... 95  
    Understanding Sonar ..... 99  
Appendix .....102  
    Specifications ..... 102  
    Optional Accessories ..... 103  
    Installation Information..... 104  
    What is EGNOS/WAAS/MSAS? ..... 109  
    LORAN TD Setup .....109  
    Map Datums and Location Formats .....111  
    Digital Selective Calling (DSC)..... 112  
    Declaration of Conformity (DoC) ..... 117  
    Messages ..... 118  
    Data Field Options..... 120  
    Software License Agreement ..... 122  
    Product Registration..... 122  
    Limited Warranty ..... 123  
    FCC Compliance..... 124  
Index .....125

## **Caring for the GPSMAP 278**

The GPSMAP 278 case is constructed of high quality materials and does not require user maintenance except cleaning.

### ***Cleaning the Case***

Clean the unit's outer casing (except for the screen) using a cloth dampened with a mild detergent solution and then wipe dry. Avoid chemical cleaners and solvents that may damage plastic components.

### ***Cleaning the Screen***

The GPSMAP 278 screen should be cleaned using a soft, clean, lint-free cloth. Water, isopropyl alcohol, or eyeglass cleaner can be used if needed. If these are used, apply the liquid to the cloth and then gently wipe the screen with the moistened cloth.

### ***Storage***

Do not store the GPSMAP 278 where prolonged exposure to temperature extremes may occur (such as in the trunk of a car) as permanent damage may result. User information, such as waypoints and routes are retained in the unit's memory without the need for external power. It is always a good practice to back up important user data by manually recording it or downloading it to a PC (transferring it to MapSource).

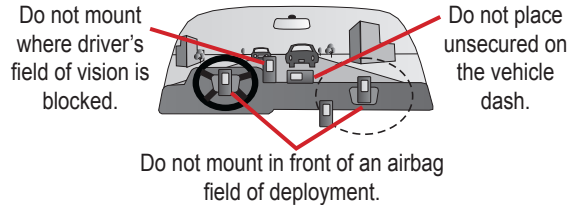
### ***Water Immersion***

The GPSMAP 278 is waterproof to IEC Standard 60529 IPX7. It can withstand immersion in 1 meter of water for 30 minutes. Prolonged submersion can cause damage to the unit. After submersion, be certain to wipe and air dry the unit before reuse or charging.

## Warning

**Failure to avoid the following potentially hazardous situations could result in an accident or collision resulting in death or serious injury.**

When installing the unit in a vehicle, place the unit securely so that it does not obstruct the driver's view of the road or interfere with vehicle operating controls, such as the steering wheel, foot pedals, or transmission levers. Do not place in front of or above any airbag. (See diagram.)



When navigating, carefully compare information displayed on the unit to all available navigation sources, including information from street signs, visual sightings, and maps. For safety, always resolve any discrepancies or questions before continuing navigation and defer to posted road signs.

Always operate the vehicle in a safe manner. **Do not become distracted by the unit while driving, and always be fully aware of all driving conditions.** Minimize the amount of time spent viewing the unit's screen while driving and use voice prompts when possible. Do not input destinations, change settings, or access any functions requiring prolonged use of the unit's controls while driving. Pull over in a safe and legal manner before attempting such operations.

This unit is designed to provide route suggestions. It is not designed to replace the need for driver attentiveness regarding road closures or road conditions, traffic congestion, weather conditions, or other factors that may affect safety while driving.

Use the electronic chart in the unit only to facilitate, not to replace, the use of authorized government charts. Official government charts and notices to mariners contain all information needed to navigate safely.

Use this unit only as a navigational aid. Do not attempt to use the unit for any purpose requiring precise measurement of direction, distance, location, or topography.

**WARNING:** This product, its packaging, and its components contain chemicals known to the State of California to cause cancer, birth defects, or reproductive harm. This Notice is being provided in accordance with California's Proposition 65. See [www.garmin.com/prop65](http://www.garmin.com/prop65) for more information.

## Battery Warnings

If these guidelines are not followed, the internal lithium-ion battery may experience a shortened life span or may present a risk of damage to the GPS unit, fire, chemical burn, electrolyte leak, and/or injury.

- Do not leave the unit exposed to a heat source or in a high temperature location, such as in the sun in an unattended vehicle. To prevent damage, remove the unit from the vehicle or store it out of direct sunlight, such as in the glove box.
- Do not puncture or incinerate.
- When storing the unit for an extended time, store within the following temperature range: 32° to 77°F (0° to 25°C).
- Do not operate the unit outside of the following temperature range: -4° to 131°F (-20° to 55°C).
- Contact your local waste disposal department to properly recycle/dispose of the unit/battery.

### Additional User-Replaceable Battery Warnings:

- Do not use a sharp object to remove the battery.
- Keep the battery away from children.
- Do not disassemble, puncture, or damage the battery.
- If using an external battery charger, only use the Garmin accessory approved for your product.
- Only replace the battery with the correct replacement battery. Using another battery presents a risk of fire or explosion. To purchase a replacement battery, see your Garmin dealer or the Garmin Web site.

## Important Information

**MAP DATA INFORMATION:** One of the goals of Garmin is to provide customers with the most complete and accurate cartography that is available to us at a reasonable cost. We use a combination of governmental and private data sources, which we identify in product literature and copyright messages displayed to the consumer. Virtually all data sources contain some inaccurate or incomplete data. In some countries, complete and accurate map information is either not available or is prohibitively expensive.

**NOTICE REGARDING WINDSHIELD MOUNTING; SPECIAL NOTICE TO DRIVERS IN CALIFORNIA AND MINNESOTA:** State law prohibits drivers in California and Minnesota from using suction mounts on their windshields while operating motor vehicles. Check your state and local laws and ordinances for similar restrictions. Other Garmin dashboard or friction mounting options should be used. Garmin does not take any responsibility for any fines, penalties, or damages that may be incurred as a result of disregarding this notice or as a result of any other state or local law or ordinance relating to use of the unit. (See California Vehicle Code Section 26708(a); Minnesota Statutes 2005, Section 169.71.)

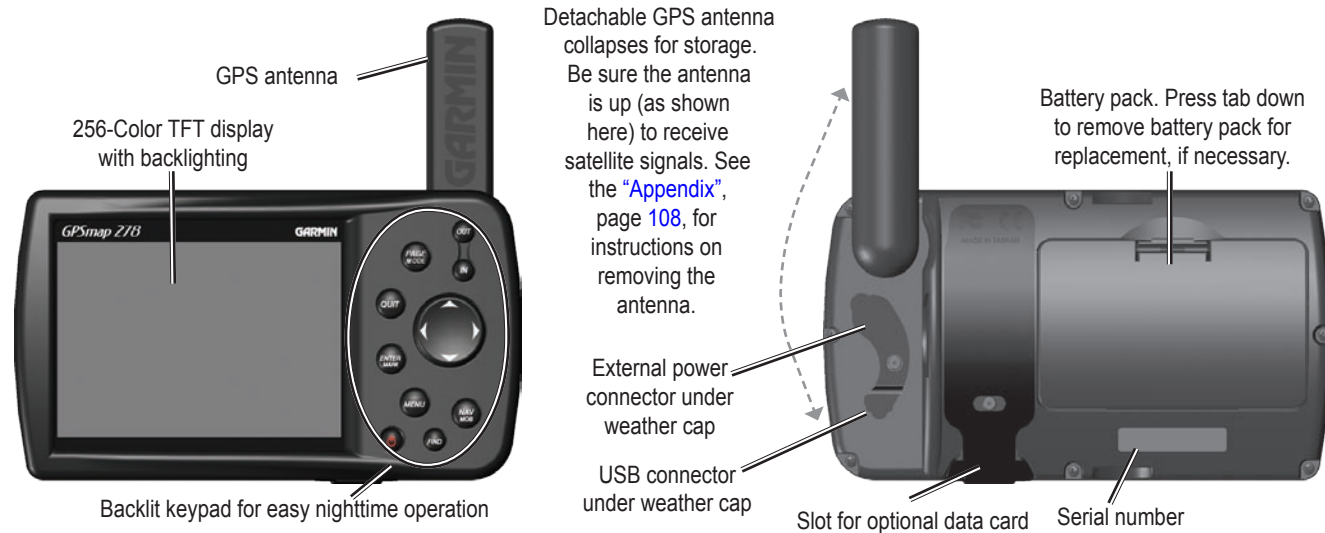
**The California Electronic Waste Recycling Act of 2003** requires the recycling of certain electronics. For more information on the applicability to this product, see [www.erecycle.org](http://www.erecycle.org).



## GETTING STARTED

### Unit Overview

The GPSMAP 278 is an all-in-one, versatile color chartplotter and automobile navigator—perfect for land or water. This portable GPS navigator features a 256-color TFT display that is easy to read in bright sun and includes a built-in worldwide basemap. The GPSMAP 278 comes preloaded with City Navigator® NT Europe, which contains street maps and a points of interest (POIs) database, including motels, restaurants, fuel, ATMs and more. In addition, GPSMAP 278 accepts customized points of interest such as school zones and safety cameras and includes proximity alerts to warn you of upcoming POIs.



## Charging the GPSMAP 278




Before using the GPSMAP 278, you might need to charge the battery. Plug the power cable into an external power source to charge. You can use the unit while it is charging.

### To charge the battery:

1. Lift the rubber weather cap to expose the power connector on the back of the unit. See the image on page 1 for connector location.
2. Align the notches and push the plug into the connector until fully seated.
3. Plug the 12-Volt adapter into an available AC outlet, or cigarette lighter receptacle if you have a cigarette lighter adapter. Use care when routing the cable; make sure it does not interfere with vehicle operation. The unit begins charging as soon as external power is applied.




**TIP:** Placing the unit in Charge Mode charges the unit more quickly than when the unit is turned on and reduces draw on the vehicle/vessel battery.

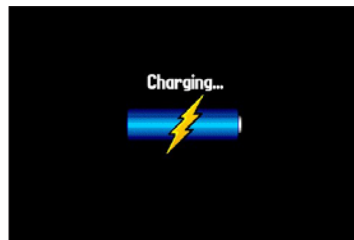
When you turn on the GPSMAP 278 power source indicator on the GPS tab shows the unit is operating off battery power () , that the unit is charging () , or that an external power source is in use ().

## Using Charge Mode

If you want to charge the battery when you are not using the unit, you can put the unit into Charge Mode.

### To put the GPSMAP 278 in charge mode:

1. Connect the GPSMAP 278 to an external power supply.
2. Press and hold the  **POWER** key. Instead of completely turning off, the GPSMAP 278 goes into Charge Mode.



**NOTE:** While in Charge Mode, the GPSMAP 278 draws a small amount of current from the vehicle/vessel battery. To avoid discharging the vehicle's battery, disconnect the external power cable from the unit when not in use for several days.

Over time, you might notice that the lithium-ion battery in the unit is not holding a charge any more. This is common for lithium-ion batteries. Contact Garmin or your Garmin dealer to order a battery pack replacement if you are experiencing battery charging issues.

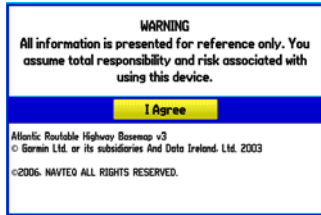
## Turning Your GPSMAP 278 On or Off

Before you turn on the GPSMAP 278, be sure the antenna is rotated up as shown on page 1, and it has a clear and unobstructed view of the sky to receive satellite signals.


The first time you turn on your GPSMAP 278, the GPS receiver must collect satellite data and establish its current location. To ensure proper initialization, the GPSMAP 278 is shipped from the factory in AutoLocate mode, which allows the receiver to “find itself” anywhere in the world.

### To turn the GPSMAP 278 on and off:

1. Press and hold the  **POWER** key. When the unit turns on, a tone sounds and the Warning Page appears.




Warning Page

2. Read the warning, and then press **ENTER** to continue.
3. To turn off the GPSMAP 278, press and hold the  **POWER** key again.

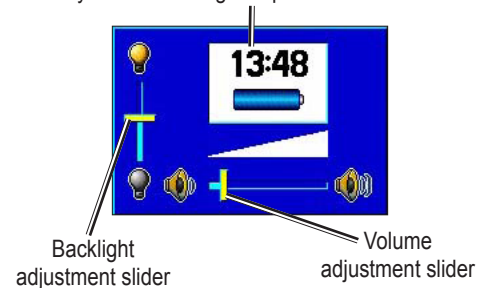
## Adjusting the Backlight and Volume

You can adjust the backlight to see the display better. If you are using the External Speaker with 12/24-Volt Adapter Cable with the GPSMAP 278, you can adjust the volume level of the audio output.

### To adjust the backlight level or volume:

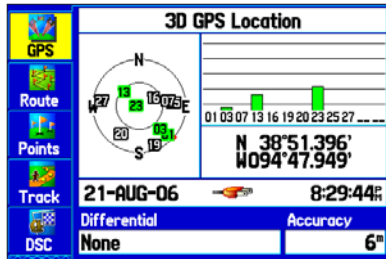
1. Press and quickly release the  **POWER** key.
2. Press up on the **ROCKER** to increase the brightness or press down to decrease. Press right to raise the volume or left to lower.
3. Press **ENTER** or **QUIT** to close the Backlight/Volume adjustment window.

Battery time remaining and power source indicator



## Getting Satellite Signals

After you turn on the GPSMAP 278, the unit automatically begins searching for satellites. The GPS page appears while the unit is gathering satellite signals and acquiring a fix, which should take only a few minutes. While the GPSMAP 278 is getting satellite signals, the GPS page shows the status as “Acquiring Satellites.”



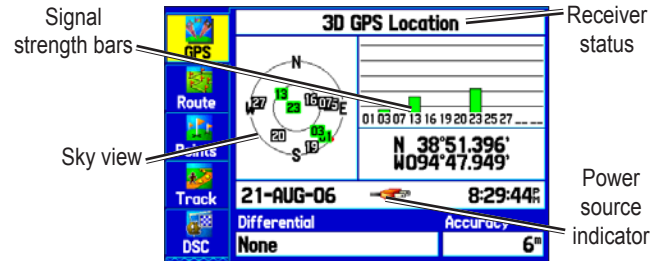
**NOTE:** While acquiring satellites, the Map Page might show the wrong location, such as China. You need to wait a few more minutes to acquire satellites and find your current location.

## Viewing GPS Status

The GPS tab provides a visual reference of satellite acquisition, receiver status, and accuracy. The sky view and signal strength bars show of what satellites are visible to the receiver and whether they are being tracked.

As the receiver locks onto satellites, a signal strength bar appears for each satellite in view, with the appropriate satellite number underneath each bar. The numbers below each bar represent the particular satellite that is being received. Numbers above 33 indicate EGNOS satellites.

The sky view shows a birds-eye-view of the position of each satellite relative to the receiver's last known position. The outer circle represents the horizon (north up), the inner circle represents 45° above the horizon, and the center point represents a position directly overhead. You can also set the sky view to a Track Up configuration, causing the top of the sky view to align along your current track heading. Press **MENU** to change the configuration of the sky view.



The progress of satellite acquisition is shown in three stages:

- **No signal strength bars**—the receiver is looking for the satellites indicated.
- **White signal strength bars**—the receiver has found the satellite and is collecting data.
- **Green signal strength bars**—the receiver has collected the necessary data from this satellite.

When the GPSMAP 278 collects the necessary data from the best satellites in view to calculate a fix, the status field indicates the status of the receiver. The unit updates the location, date, and time.

### **Receiver Status**

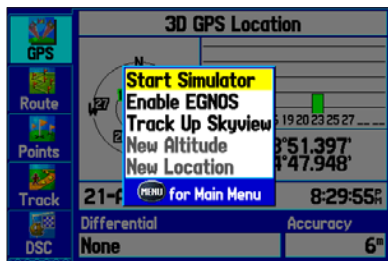
The Receiver Status field shows one of the following conditions:

- **Searching the Sky**—the receiver is looking for satellites.
- **AutoLocate**—the receiver is looking for any satellite whose almanac was collected, which can take up to five minutes.
- **Acquiring Satellites**—the receiver is looking for and collecting data from satellites visible at its last known or initialized location but has not acquired a fix.

- **2D GPS Location**—At least three satellites were acquired and a two-dimensional position fix was calculated. “2D Differential” appears when you are receiving EGNOS corrections in 2D mode, and a “D” appears on the strength bar of satellites being corrected.
- **3D GPS Location**—At least four satellites were acquired and a three-dimensional fix was calculated. “3D Differential” appears when you are receiving EGNOS corrections in 3D mode, and a “D” appears on the strength bar of satellites being corrected.
- **Lost Satellite Reception**—the receiver is no longer tracking enough satellites for a 2D or 3D fix.
- **Receiver Not Usable**—the receiver is unusable, possibly due to interference or abnormal satellite conditions. Turn the unit off and back on to reset it.
- **Simulating GPS**—the receiver is in Simulator Mode.
- **GPS Off**—the GPS receiver is turned off.

## GPS Options

Press **MENU** twice to open the Main Menu. Use the **ROCKER** to highlight the **GPS** tab. Press **MENU** to open the options menu.



**Start/Stop Simulator**—start and stop Simulator Mode, which is helpful when learning how to use your unit.

**Enable/Disable EGNOS**—enable or disable EGNOS capability. See page 109 of the “Appendix” for more information about EGNOS.

**Track Up Skyview/North Up Skyview**—orient the sky view display on the GPS page to North up or Track up.

**New Altitude**—manually enter your altitude.

**New Location**—enter a new location automatically or using the map.

## GPS Tips

While the receiver is gathering information, your location on the map might appear different from where you are actually located. As soon as the receiver gathers enough satellite information, your proper location appears on the map.

When you travel more than 600 miles with the GPS receiver turned off, the receiver may take longer than normal to initialize and find your location.

The GPS receiver can lose satellite signals due to interference from such items as buildings, tunnels, and heavy tree cover. Monitoring the GPS status is recommended.

To learn about GPS, visit [www.garmin.com/aboutGPS/](http://www.garmin.com/aboutGPS/).

## Using the GPSMAP 278 Keypad

### PAGE/MODE Key

- Press to cycle through main pages in sequence and exit a submenu page.
- Press and hold to switch between Marine and Automotive modes.

### QUIT Key

- Press to cycle through main pages in reverse sequence, revert to the previous value in a data entry field, or cancel an unintended function.

### ENTER/MARK Key

- Press to select a highlighted option.
- Press and hold to mark your current location as a waypoint.

### MENU Key

- Press to open the options menu for the current page.
- Press twice to open the Main Menu.

### POWER Key


- Press and hold to turn the unit on or off.
- Press and release to adjust the backlighting and external speaker volume.



### IN Key/OUT Key

- Press to adjust map scale to show a larger area with less detail (zoom out) or a smaller area with more detail (zoom in).

### ROCKER

- Press up, down, left, or right to highlight options and to enter data, or use to pan the arrow  on the Map Page.

### NAV/MOB Key

- Press to show the navigation menu.
- In Marine Mode, press and hold to activate the MOB function.

In Automotive Mode, press and hold to show the Next Turn page and announce the next turn when using the external speaker.

### FIND Key

- Press to quickly search for and access user waypoints, cities, and other items used for navigation.

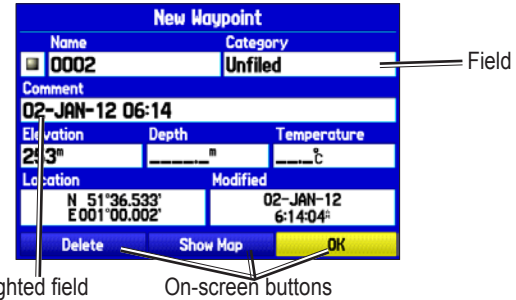
## Using The GPSMAP 278

The advanced keypad system on the GPSMAP 278 is designed to allow you to select options and enter data quickly and conveniently. As you progress through this owner's manual, you are directed to press a specific key or highlight a field on the screen. When you are directed to press a key, you should press and quickly release the key. If the key needs to be held down for a period of time to start a secondary function, the instructions tell you to do so. When a field is selected on the screen, it is highlighted in yellow.

The following terms are used throughout this manual:

- **Highlight**—move the highlighted area on the screen up, down, left, or right with the **ROCKER** to select individual fields. Moving the highlight to a given location allows you to make a selection, begin data entry, or scroll through a list.
- **Field**—the location on a page where data or an option can be shown and entered. Select (highlight) a field using the **ROCKER** to begin entering data or selecting options.
- **On-screen button**—use the **ROCKER** to highlight a button, and press **ENTER** to select the button.
- **Scroll bar**—when viewing a list of items too long to show on the screen, a scroll bar appears along the right side of the list. To scroll through a list, press up or down on the **ROCKER**.

- **Default**—the factory setting saved in the unit's memory. You can change the settings, and you can also revert to the factory (default) settings when you select **Restore Defaults**.



## Cartography

The GPSMAP 278 comes preloaded with City Navigator NT Europe v 9.0

Optional preloaded Garmin data cards and MapSource CD-ROMs enhance the versatility of your GPSMAP 278. With optional MapSource BlueChart g2, you can view information that is not already pre-loaded.

See the Garmin Web site at [www.garmin.com/cartography/](http://www.garmin.com/cartography/) for compatible MapSource products.

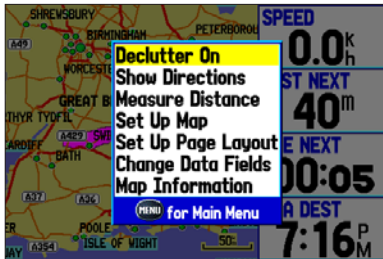


## Selecting Options and Entering Data

To enter data and select options, use the **ROCKER** to highlight, select, or choose an item in a list or a field on the screen. Use the **ENTER** key and the **ROCKER** to select options, enter names and numbers in data fields, and activate your selections.

### To select an optional feature:

1. From any page, press **MENU**. The options menu shows a list of optional features specific to that page.



2. Use the **ROCKER** to move the highlight up, down, right, or left on the menu to the option you want to select.
3. Press **ENTER** to select the feature. Another window with more options might appear. If so, select an option and press **ENTER** again.

### To exit a menu or return to the previous setting:

Press **QUIT**. The **QUIT** key moves backward through your steps. Press **QUIT** repeatedly to return to the starting page.

### To select an on-screen button:

On a page with on-screen buttons, use the **ROCKER** to highlight an on-screen button, and press **ENTER**.



To mark your current location as a waypoint, press and hold **ENTER/MARK** until the New Waypoint Page appears.

### To enter data in a data field:

1. Use the **ROCKER** to highlight the data field and press **ENTER** to edit it.
2. Press up or down on the **ROCKER** to select characters. Press right to move to the next character or press left to move back to the previous character. If there are two lines of data, keep pressing right on the **ROCKER** to go to the next line.



**TIP:** To clear the entire data field, highlight the left-most character field and press left on the **ROCKER** again.

3. Press **ENTER**.

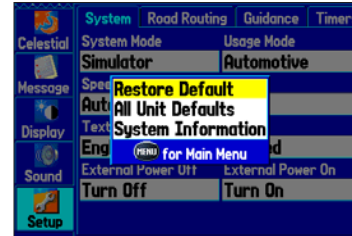
Not all fields are programmable. When you are on a page with fields that are not selectable, the highlight skips over them.

## Restoring Default Settings

You can restore factory defaults for the following Main Menu tabs: Track, Alarms, Display, Sound, and Setup. For more information about the Main Menu, see the “Main Menu” section beginning on page 66.

**To restore default settings:**

1. Press **MENU** twice to open the Main Menu.
2. Use the **ROCKER** to highlight a tab, and then press **MENU** to open the options menu.

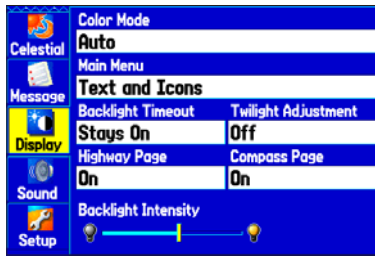


Setup Tab Options Menu

3. Highlight **Restore Default**, and press **ENTER**.

## Using the Main Menu

Use the Main Menu on your GPSMAP 278 to access various waypoint, system, navigation and interface management, and setup menus. Press the **MENU** key twice from any page to open the Main Menu. For more information, see the “Main Menu” section on page 66.



Main Menu

### To select a tab from the Main Menu:

1. From any page, press **MENU** twice to open the Main Menu.
2. Press up or down on the **ROCKER** to highlight a tab. The information for the highlighted tab automatically appears on the right. To highlight a sub tab, press left or right on the **ROCKER**, and then press up or down to select individual fields.

By default, the Main Menu tabs are shown as icons along the left side of the screen. You can change the Main Menu to show tabs in a text-only format.

### To view the Main Menu icons in text only format:

1. Highlight the **Display** tab, and press **ENTER**.
2. Select the **Main Menu** field. Press **ENTER**.
3. Highlight **Text Only**, and Press **ENTER**.



## Using Simulator Mode

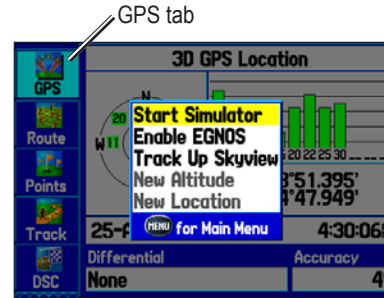
Simulator Mode is great for practicing with the unit if you are indoors or when satellite signals are not available. All waypoints and routes created in Simulator Mode are retained in memory for future use.



**NOTE:** Do not try to navigate using Simulator Mode because the GPS receiver is turned off. Any satellite signal strength bars shown are only simulations and do not represent the strength of actual satellite signals.

### To turn on Simulator Mode:

1. Press **MENU** twice to open the Main Menu.
2. Highlight the **GPS** tab.
3. Press **MENU** to open the GPS tab options menu.
4. Highlight **Start Simulator**, and press **ENTER**.



Starting Simulator Mode from the GPS tab

### Entering a New Location

Use the GPS options menu to enter a new location to simulate from.

#### To enter a new location using the map:

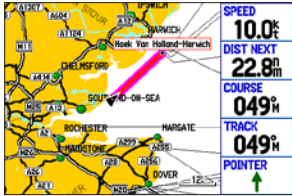
1. Highlight the **GPS** tab on the Main Menu.
2. Press **MENU** to open the options menu.
3. Highlight **New Location**, and press **ENTER**.
4. Highlight **Use Map**, and press **ENTER**.
5. Use the **ROCKER** to move the panning arrow to the location you want to simulate, and press **ENTER**.

# MARINE MODE

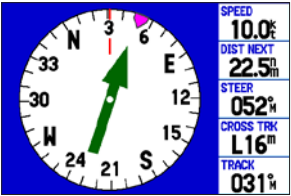
Your GPSMAP 278 comes preloaded with an enhanced worldwide basemap that depicts shorelines and surface features. The GPSMAP 278 is compatible with BlueChart g2 marine cartography.

## Marine Mode Pages

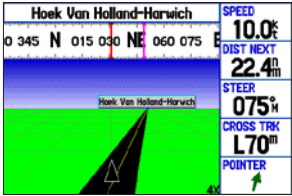
Marine Mode has five main pages: Map, Compass, Highway, Active Route, and Position Data. An optional Sonar Page is available when a GSD 21 or GSD 20 is connected. See the “Setting Up and Using Sonar” section beginning on page 90 for more information.



Map Page



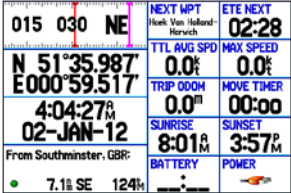
Compass Page



Highway Page



Active Route Page



Position Data Page

## Navigating to a Destination

You can navigate to your destination using the Map Page. As you travel, you see a magenta line that always runs from your current location to the destination or to the next turn on the Map Page. You can use the Map Page, Compass Page, or Highway Page to help navigate.

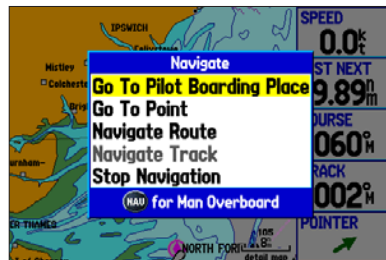
You can navigate to a destination using one of the following methods:

- Select a point on the map and press the **NAV** key (page 15).
- Press the **NAV** key to navigate a new route using the Find Menu, or to navigate a saved route or track (page 24).
- Press the **FIND** key to search for a particular item and create a route to it (see page 17).

Marine Mode and Automotive Mode are similar. Most of the features discussed here also apply to Automotive Mode.

## Navigate Options Menu

Press **NAV** to open the Navigate options menu.



Navigate Options Menu

**Go To Point**—select a waypoint or point of interest from the Find menu to which to navigate (page 15).

**Navigate Route**—select a route to navigate (page 24).

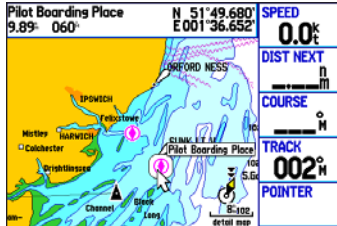
**Navigate Track (TracBack)**—select a saved track to navigate (page 38).

**MOB (Man OverBoard)**—create a MOB waypoint and navigate to that location (page 16).

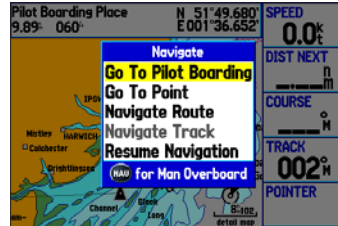
**Stop (Resume) Navigation**—stop or resume navigation (page 15).

## To navigate (Go To) a point on the map:

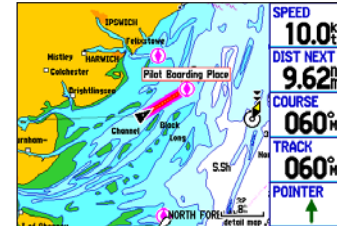
- 1 Highlight a point to navigate to, and press **NAV**.



- 2 Highlight **Go To <point name>**, and press **ENTER**.

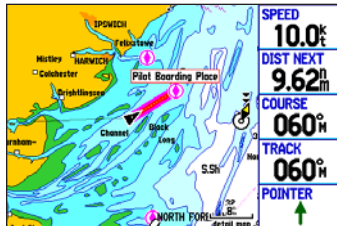


- 3 Follow the magenta line created on the Map Page.

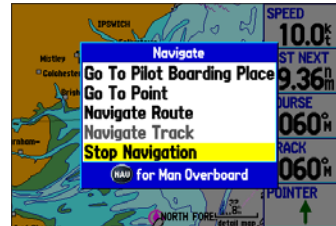


## To stop navigation:

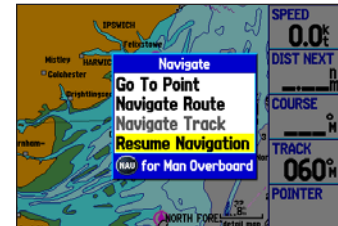
- 1 While navigating to a point, press **NAV**.



- 2 Highlight **Stop Navigation**, and press **ENTER**.



- 3 Highlight **Resume Navigation**, and press **ENTER** to resume navigation.



## Man OverBoard (MOB)

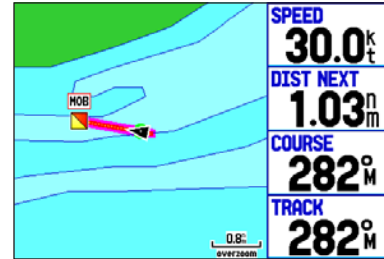
Use the MOB function to simultaneously mark your current location and create a direct route back to that location for quick response to emergency situations.

### To activate the MOB function:

1. Press and hold the NAV/MOB key, or press the NAV/MOB key twice.



2. Press **ENTER** to confirm and begin navigating to the MOB location.



When a MOB is activated, a MOB waypoint with an international MOB symbol is created, and the unit begins actively navigating to that point. Use any of the navigation pages to guide you back to the MOB point. The MOB waypoint is stored in the waypoint list and can be deleted like any other waypoint.



## Finding an Item

Use the Find menu to search for addresses, food & drink, fuel services, lodging, banks/ATMs, cities, shopping, stored waypoints, and points of interest (POIs). To open the Find menu, press the **FIND** key. The Find menu is comprised of several default categories, including Waypoints, Cities, Exits, Transportation, and Data, just to name a few. Additional categories appear depending on the optional BlueChart g2 or MapSource data card in the unit.

### To find an item and go to it:

- 1 Press **FIND** to open the Find menu.



- 4 Select an item from the list, and press **ENTER**.

Attractions • From Current Location

Main Road, Harwich, Essex

Landguard Fort	348M	11.9%
Beacon Hill Fort	343M	12.4%
Harwich Redoubt Fort	343M	12.5%
Harwich Maritime Museum	343M	12.5%
Low Lighthouse	343M	12.5%
<b>High Lighthouse</b>	<b>343M</b>	<b>12.6%</b>
Vintage Wireless and Tv Mus	343M	12.6%
Harwich Lifeboat Museum	344M	12.7%
Harwich Electric Palace Cin	343M	12.7%

- 2 Highlight a category, and press **ENTER**.

Attractions • From Current Location

Containing

Walton Pier	324M	7.7%
Walton Maritime Museum	328M	7.8%
Clacton Pier	287M	9.4%
Landguard Fort	348M	11.9%
Beacon Hill Fort	343M	12.4%
Harwich Redoubt Fort	343M	12.5%
Harwich Maritime Museum	343M	12.5%
Low Lighthouse	343M	12.5%
<b>High Lighthouse</b>	<b>343M</b>	<b>12.6%</b>

- 5 Highlight the **Go To** button, and press **ENTER**.

Attraction Chelmsford, England

**High Lighthouse**

Museum/Historical

Main Road  
Harwich, Essex C012 3  
01206-322606

From Current Location

12.6M	343M	N 51°56.686'	E 001°17.307'
-------	------	--------------	---------------

Save Show Map **Go To**

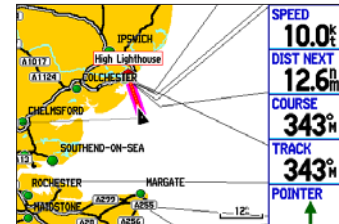
- 3 Press **ENTER**, and then spell the name of the item.

Attractions • From Current Location

Containing

Minster Abbey Gatehouse M	211M	5.1%
Minster Abbey Gatehouse M	211M	5.1%
Coast Study Centre	234M	5.4%
Coast Study Centre	234M	5.4%
Sheerness Heritage Centre	234M	5.6%
Sheerness Heritage Centre	234M	5.6%
Festival Playing Field	234M	5.7%
Festival Playing Field	234M	5.7%
Sea Life Centre	293M	6.0%

- 6 Follow the magenta line created on the Map Page.



## Finding an Item From Another Location

You can use the Find menu to center your search around an item you just found. For example, you search for Restricted Areas and the search shows an “Anchoring Prohibited” search result. If you press **FIND** again, you will see “From Anchoring Prohibited” as the new search from point. You can also use the Find feature to center your search from any waypoint, route list entry, map item, or POI.

### To find an item near another item:

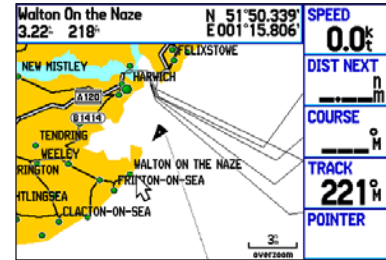
1. Follow the steps on page 17 to find an item.
2. Press **FIND** to open the Find menu.



3. Select a category, and press **ENTER**. Items near the previously-selected item are shown in the search results list.

### To find an item from another location on the map:










1. Move the arrow (pointer) to the location you want on the map, and press **FIND**.



2. Highlight a category, and press **ENTER**.



- Highlight an item from the search results list, and press **ENTER**.

Find Nearest - From Map Pointer		
Walton On the Naze, Essex		
 Walton Maritime Museum	279M	8.8%
 Columbine Centre	279M	8.8%
 Naze Park Post Office	280M	8.9%
 Naze	280M	8.9%
 Frinton and Walton Swimm	278M	8.9%
 Corner House Restaurant	277M	9.0%
 Regency Hotel	276M	9.0%
 Whites Pie & Mash Shop	276M	9.0%
 Walton Pier	276M	9.1%

- Press **ENTER** to go to the item.

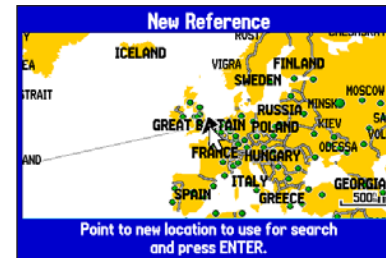
Entertainment		Chelmsford, England	
Frinton and Walton Swimming Pool			
Sports/Fitness Center			
Walton On the Naze, Essex C014 8			
01255-676608			
From Current Location			
26.1M	037M	N 51°51.166'	
		E 001°16.540'	
Save	Show Map	Go To	

### To find an item near another location:

- Press **FIND**.
- Press **MENU** to open the options menu.



- Highlight **Near Other**, and press **ENTER**.










- Select a reference location on the map, and press **ENTER**. The list shows items nearest to the new map location.

## Viewing Recently Found Items










The Recently Found Page shows a list of the items you have searched for or gone to recently.

### To view a list of recently found items:

1. Press **FIND** to open the Find menu.
2. Highlight **Recently Found**, and press **ENTER** to open the list of recently found items.

Goto History - Most Recent			
(MENU) to show Find History			
	Frinton and Walton Swimmi	161M	6.1M
	High Lighthouse	095M	2.6M
	Landguard Fort	099M	3.9M
	Walton Pier	164M	6.3M
	Holland On Sea	186M	8.6M
	Pilot Boarding Place	118M	16.3M
	(Newbury) Skinners Green	254M	102.3M

3. Press **MENU** to open the options menu.

Find History - Most Recent			
(MENU) to show Goto History			
	Low Lighthouse	097M	2.7M
	River Stour	233M	0.0M
	Frinton and Walton Swimmi	161M	6.1M
	Frinton-On	177M	7.5M
	Walton On	67M	6.7M
	Borno Chemists	116M	1.8M
	High Lighthouse	095M	2.6M
	Landguard Fort	099M	3.9M
	Walton Pier	164M	6.3M

4. Select **Show Find History** to view the list of items you have searched for recently.  
OR  
Select **Show Goto History** to view the list of items you have recently created a Go To for (Go To History).
5. Highlight **Remove Point**, and press **ENTER** to delete the selected recently found point.

## Viewing the Information Page

Each item on the map and each item listed in the results list has an Information Page.

### To view details about an item:

1. Highlight a point on the map or in the search results list, and press **ENTER**.

An Information Page appears with details about the item in a tabbed format. Depending on the item selected, and if you are using optional BlueChart g2 data cards, additional information is available for viewing the item on the Map, viewing a tide chart, viewing the list of maps on your data card, and viewing the next item in the search results list.



Map Feature Information Page

2. Press **PAGE** or **QUIT** to exit the Information Page. You can also highlight one of the on-screen buttons, and press **ENTER**.

## Find Menu Options

To view additional Find menu options, press **FIND**, and then press **MENU**.

**Enable Auto Arrange**—automatically arranges the Find menu. When selected, **Disable Auto Arrange** and **Restore Default** options are available.

**Near Other**—select a new location from which to compile the Find items lists. Using the **ROCKER**, move the map arrow to the location you want, and press **ENTER**.

**Map Information**—shows information about the detailed map data stored on the data card and allows you to select which maps appear on the Map Page.

Additional selections are available on the options menu when you are navigating:

**Near Next**—compiles the Find items lists based on the next turn in the route.

**Near Destination**—compiles the Find items lists based on the route destination.

**Near Current Route**—compiles the Find items lists based on the active route.

## Creating and Using Routes

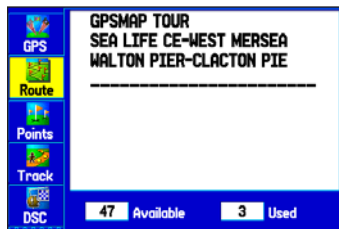
You can create and store up to 50 reversible routes, with up to 300 points each.

### Creating a New Route

Use the Route tab to create a route by selecting waypoints from the Find menu, or by selecting waypoints or map items from the Map Page.

#### To create a route using the Find menu:

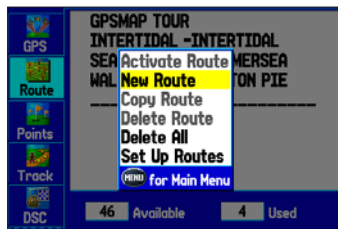
- 1 Highlight the **Route** tab on the Main Menu.



- 4 Press **ENTER** to find items to add to the route.

Attractions - From Current Location		
Eastern Esplanade, Southend-On-Sea, Essex		
Burnham On Crouch & Distri	281M	7.1%
Mangapps Farm Railway Mus	291M	7.4%
Bradwell Power Station	337M	8.7%
Mersea Island Museum	344M	10.5%
Southchurch Park	248M	10.8%
Southchurch Hall Gardens	249M	11.0%
Southchurch Hall Museum	249M	11.0%
Sea Life Centre	248M	11.3%
Kursaal	248M	11.3%

- 2 Press **MENU** once to open the Route options menu.



- 5 Highlight **OK**, and press **ENTER** to add a route point.

Attraction Chelmsford, England	
Sea Life Centre	
Landmark	
Eastern Esplanade	
Southend-On-Sea, Essex SS1 2	
01702-601834	
From Current Location	
11.3M	248M
N 51°31'916"	
E 000°43'557"	
Save	Show Map
OK	

- 3 Highlight **New Route**, and press **ENTER**.

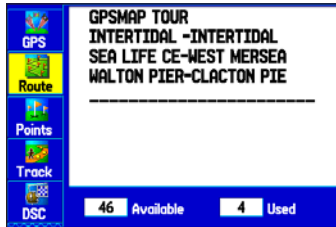
Route			
Waypoint	Course	Distance	ETA
Total			

- 6 Repeat step 5 to define additional route points.

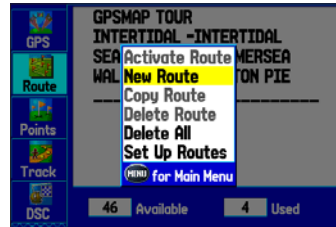
Route			
SEA LIFE CE-WEST MERSEA			
Waypoint	Course	Distance	ETA
Sea Life C	286M	0M	---
Southend	027M	0.4M	---
West Merse		16.7M	---
Total			

## To create a route using the map:

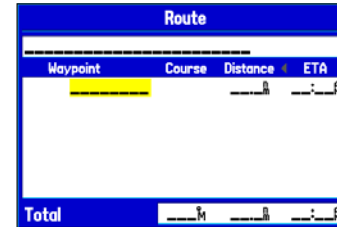
- 1 Highlight the **Route** tab on the Main Menu.



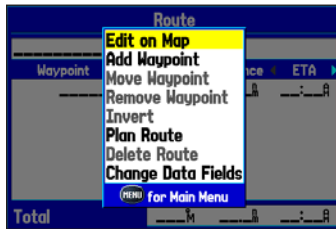
- 2 Press **MENU** once to open the Route options menu.



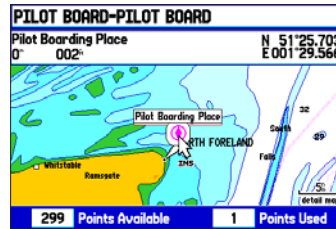
- 3 Highlight **New Route**, and press **ENTER**.



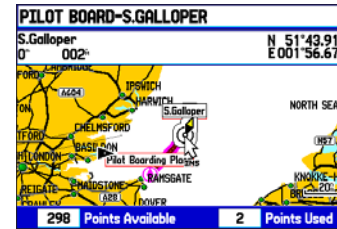
- 4 Highlight **Edit on Map**, and press **ENTER**.



- 5 Highlight a location on the map, and press **ENTER**.



- 6 Repeat step 5 to define additional route points.



**NOTE:** If you select an area of the map that is not a feature or waypoint, a new waypoint is created for that location. Press **ENTER** on the New Waypoint Page to save the location as a waypoint and continue adding points to your route. You can edit the properties of this waypoint as you can with any waypoint.

## Navigating a Saved Route

Use the Navigate Route option to select and navigate a saved route.

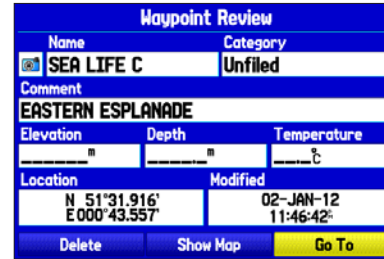
### To navigate a saved route:

1. Press the **NAV** key.
2. Highlight **Navigate Route**, and press **ENTER**.
3. Highlight a route, and press **ENTER**.



### To navigate a new route using the Find menu:

1. Press the **NAV** key.
2. Highlight **Go To Point**, and press **ENTER** to open the Find menu.
3. Highlight **Waypoints**, and press **ENTER**.
4. Select a waypoint from the list, and press **ENTER** to open the Waypoint Review Page.



Waypoint Review Page

5. With the **Go To** button highlighted, press **ENTER** to begin navigation.



## Editing a Route

After you create a route, use the Route Review Page to edit, change the name, and review route points of a selected route.

### To change the name of the route:

1. Press **MENU** twice to open the Main Menu. Highlight the **Route** tab.
2. Use the **ROCKER** to highlight the name of the route, and press **ENTER**.
3. With the Route Review Page open, highlight the route name field at the top of the page, and press **ENTER**.



Route Review Page

4. Enter the route name, and press **ENTER**.

### To review individual route points:

1. Press **MENU** twice to open the Main Menu. Highlight the **Route** tab.
2. From the Route List Page, use the **ROCKER** to highlight the name of the route, and press **ENTER**.
3. From the Route Review Page, highlight a point, and press **ENTER**.
4. On the Point Review Page, choose **Next** (highlight the next point on the route list), **Show Map** (show the point on a map window), or **Save** (save the point as a waypoint) and press **ENTER**. If the route point is a user waypoint, you can edit any of the waypoint properties on the Waypoint Page (see the [“Creating and Using Waypoints”](#) section beginning on page 28).

When you return to the Route Review Page, the next point in the route is automatically highlighted. You can review each point on the route by pressing **ENTER** repeatedly.

**To add points to a route:**

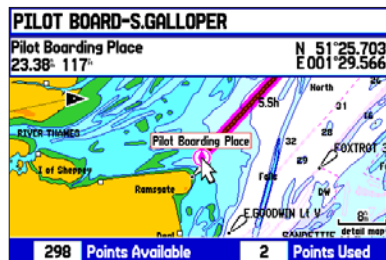
1. Press **MENU** twice to open the Main Menu. Highlight the **Route** tab.
2. Select a route, and press **ENTER**.
3. Highlight the spot in the route that you want to add the new point. (The new point is added before the highlighted route point.)
4. Press **MENU**.
5. Highlight **Insert Waypoint**, and press **ENTER**. The Find Menu opens for you to search for and select the point you want to add to the route.

Route			
SEA LIFE CE-WEST MERSEA			
Waypoint	Course	Distance	ETA
Sea Life C	286 <sup>M</sup>	0 <sup>M</sup>	---
Southend	027 <sup>M</sup>	0.4 <sup>M</sup>	---
West Merse	---	16.7 <sup>M</sup>	---
<b>Total</b>	<b>026<sup>M</sup></b>	<b>16.7<sup>M</sup></b>	<b>---</b>

6. In the Point Review Page, highlight **OK**, and press **ENTER** to add the new point to the route.

**To edit the route on the map:**

1. Press **MENU** twice to open the Main Menu. Highlight the **Route** tab.
2. Select a route and press **ENTER**. Press **MENU** to open the Route Review Page options menu.
3. Highlight **Edit on Map**, and press **ENTER**.
4. Use the **ROCKER** to select a location on the route (the route turns white when the arrow is over the route), and press **ENTER**.
5. Use the **ROCKER** to drag the route to the new point location, and press **ENTER**.



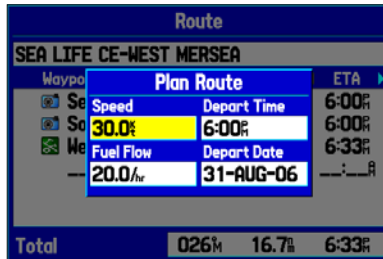
Editing the route on the map

6. Repeat steps 4 and 5 until all points are added to the route. Press **QUIT** when finished.

You can enter information about your trip so the GPSMAP 278 can estimate information about your trip.

### To plan your route:

1. Open the Route Review Page options menu.
2. Highlight **Plan Route**, and press **ENTER**.



### Entering Speed and Fuel Flow for Trip Planning

3. Enter the data for speed and fuel flow. You also can enter the date and time of your departure. Press **QUIT** to return to the Route Review Page.



**NOTE:** Fuel flow rates are measured in “units per hour.” System setting changes for units of measure (statute, nautical or metric) do not affect the fuel flow measure. You should enter fuel flow rates based on information for your vehicle (such as the operator’s manual or performance specifications) and make note of the units of measure (gallons or liters).

### Manually Transitioning to the Next Waypoint

From the Route tab option menu, highlight **Set Up Routes** and press **ENTER** to set the route leg transition (or waypoint transition). Select **Distance** to enter a radius so that when you are within the entered distance, the GPSMAP 278 leads you to the next point on your route.

When you select **Manual**, you can transition to the next waypoint anytime while navigating a route. While you are navigating the route, open the Active Route Page. Press **MENU**. Highlight **Next Route Waypoint** and press **ENTER** to have the GPSMAP 278 start routing you to the next point in your route.

## Creating and Using Waypoints

The GPSMAP 278 stores up to 3,000 alphanumeric waypoints with a user-defined icon, comment, elevation, depth, and temperature available for each waypoint. You can create waypoints using three basic methods:

- **ENTER/MARK**—use the **ENTER/MARK** key to mark your present location.
- **Graphically**—use the map display to define a new waypoint location.
- **Manually**—enter waypoint location coordinates manually.

## Marking Your Present Location

Use the **ENTER/MARK** key to capture your present location to create a new waypoint. You must have a valid position (2D or 3D) fix to mark your present location.

### To mark your present location:

1. Press and hold the **ENTER/MARK** key until the New Waypoint Page appears, then release it. A default four-digit name and symbol are assigned for the new waypoint.

New Waypoint		
Name	Category	
0002	Unfiled	
Comment		
02-JAN-12 06:14		
Elevation	Depth	Temperature
253'		°C
Location		Modified
N 51°36.533'		02-JAN-12
E 001°00.002'		6:14:04
Delete	Show Map	OK

New Waypoint Page

2. To accept the waypoint with the default information, highlight **OK**, and press **ENTER**.

To change any information on the New Waypoint Page, highlight the appropriate field and press **ENTER**. After entering and confirming your changes, highlight **OK**, and press **ENTER**.

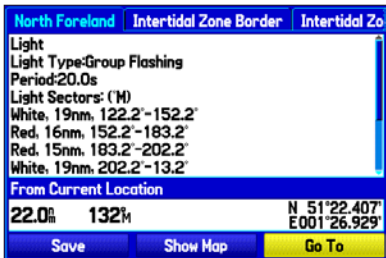
## Creating Waypoints Using the Map

You can quickly create a waypoint using the Map Page. When you pan the map and move the arrow over a map item, you see a highlighted description of that item. The GPSMAP 278 uses the map item text shown on the map as the default name and symbol for the new waypoint.

### To create a new waypoint using the Map Page:

1. Use the **ROCKER** to move the arrow to the map location or map feature you want.
2. Press and quickly release **ENTER/MARK** to capture the arrow location. Pressing and holding **ENTER/MARK** marks your current location, not the arrow's location.

If you have highlighted a map feature, an information page appears after you press **ENTER**. Use the **ROCKER** to highlight **Save**, and press **ENTER** to save the item as a waypoint. The New Map Waypoint Page appears.



Map Feature Information Page

3. To accept the waypoint with the default information, highlight **OK**, and press **ENTER**.

To change any information on the New Map Waypoint Page, highlight the appropriate field and press **ENTER**. After entering your changes, highlight **OK**, and press **ENTER**.

## Creating a Waypoint by Entering Coordinates

You can manually enter location coordinates to create a waypoint. This method is useful for creating a waypoint at a specific latitude/longitude position from a chart.

### To create a new waypoint by entering location coordinates:

1. Press **ENTER/MARK** to create a waypoint. The new waypoint is created with the next available waypoint number and the receiver's last known location as the default location.
2. On the New Map Waypoint Page, highlight the **Location** field, and press **ENTER**.

New Map Waypoint		
Name	Category	
0002	Unfiled	
Comment		
02-JAN-12 06:21		
Elevation	Depth	Temperature
m	m	°C
Location		Modified
N 51°58.857'		02-JAN-12
E 001°24.109'		6:21:39
Delete	Show Map	OK

3. Use the **ROCKER** to enter location coordinates and press **ENTER** when finished.

To change any of the other information on the New Waypoint Page, highlight the appropriate field and press **ENTER**. After entering your changes, highlight **OK**, and press **ENTER**.

## Reviewing a Waypoint

After you create and store a waypoint, you can modify, review, rename, move, or delete it at any time using either the Waypoint Review Page or Waypoint Edit Page.

### To access the Waypoint Review Page:

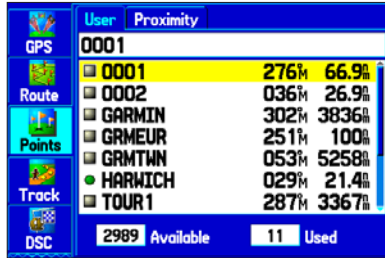
Highlight a waypoint on the Map Page, and then press **ENTER** to open the Waypoint Review Page. If the waypoint is located on a map feature or MapSource or BlueChart g2 feature, the Waypoint Review Page might include additional tabs containing information about other features at that location.

Waypoint		Depth Area	Chart GB2182A
Name	Category		
0002	Unfiled		
Comment			
02-JAN-12 06:21			
Elevation	Depth	Temperature	
m	m	°C	
Location		Modified	
N 51°58.857'		02-JAN-12	
E 001°24.109'		6:21:39	
Delete	Show Map	Go To	

Waypoint Review Page

## To access the Waypoint Edit Page:

1. Highlight the **Points** tab on the Main Menu, and then select a waypoint from the list.



Points Tab

2. Press **ENTER** to open the Waypoint Edit Page.



**NOTE:** If the waypoint is located on a map feature or MapSource or BlueChart g2 feature, the Waypoint Edit Page does not show the details of the other map features.

## Adding a Waypoint to a Route

Use the **Append to Route** option to add the selected waypoint to the end of a route. This option is available only when you are not navigating. When you are navigating to a destination, **Add to Current Route** appears. The selected waypoint is added to the current route before the route destination.

## To add a waypoint to the end of the route:

1. Open the Waypoint Edit Page, and press **MENU**.



Waypoint Options Menu

2. Select **Append To Route**. The Select Route window appears.



3. Highlight a route or select **New Route**, and press **ENTER**.
4. Highlight **OK**, and press **ENTER** to save the waypoint.

## Averaging the Waypoint's Location

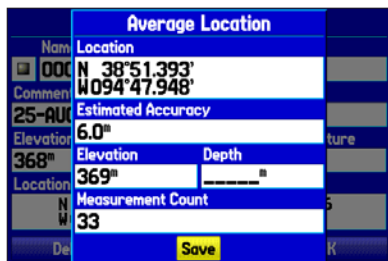
**Average Location** makes the unit take several sample location measurements for the waypoint and recalculate for a more accurate location reading.



**NOTE:** You must have a GPS satellite fix before you can average a waypoint's location.

### To calculate the average location:

1. Open the Waypoint Page, and press **MENU**.
2. Select **Average Location**, and press **ENTER**. The Average Location window appears. The fields change as the unit calculates the average location of the waypoint.



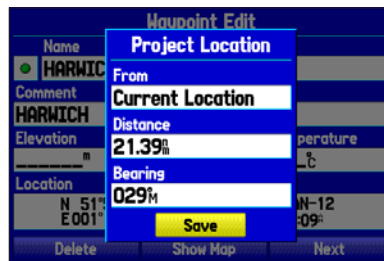
3. Press **ENTER** to save the location.

## Projecting a Waypoint

You can create a new waypoint by projecting the distance and bearing from a specific location to a new location.

### To create a new waypoint by projecting its location:

1. Create a waypoint. The new waypoint uses the next available waypoint number and the receiver's last known location as the default location.
2. Highlight the **Points** tab on the Main Menu, and then select a waypoint. Press **ENTER**.
3. Press **MENU** to open the New Waypoint Page options menu.
4. Highlight **Project Location**, and press **ENTER**.



Project Location Menu



5. To change the location from which you are projecting the new waypoint, highlight the **From** field, and press **ENTER**.
6. Select the point that you will project your new waypoint from. For more information see the “[Finding an Item](#)” section on page 17.
7. To adjust the distance that the new waypoint will be projected beyond the original waypoint, highlight the **Distance** field, and press **ENTER**. Enter the projection distance, and press **ENTER**.

To adjust the bearing that the new waypoint will be projected from the original waypoint, highlight the **Bearing** field, and press **ENTER**. Enter the bearing, and press **ENTER**.

8. When you have adjusted all elements of the projected location, highlight **Save**, and press **ENTER**.
9. Make any other changes to the new waypoint data (such as the name or symbol); highlight **OK**, and press **ENTER**.

### Editing a Waypoint

The User sub tab shows a master list of all waypoints stored in memory. From the User list, you can review, edit, rename, or delete individual waypoints or delete all user waypoints.

The number of stored and available waypoints is shown at the bottom of the User sub tab. Stored waypoints arranged in alphanumeric order.

User	Proximity
0001	
0001	276M 66.9%
0002	036M 26.9%
GARMIN	302M 3836%
GRMEUR	251M 100%
GRMTWN	053M 5258%
HARWICH	029M 21.4%
TOUR1	287M 3367%

2989 Available 11 Used

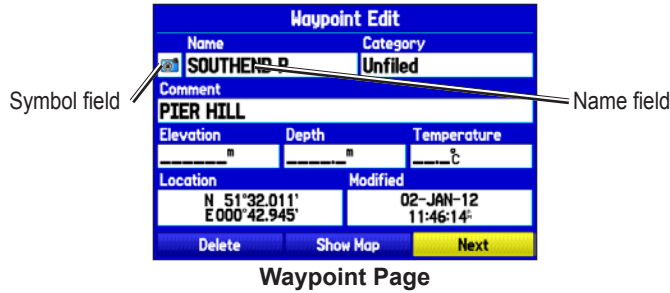
User Points Tab

### To navigate (Go To) a waypoint from the Points tab:

1. Select the **Points** tab on the Main Menu, and then highlight the **User** sub tab.
2. Highlight the waypoint you want in the list.
3. Press **NAV** to open the Navigate Menu. Highlight **Go To <Point Name>**, and press **ENTER**.

### To edit a waypoint:

1. Open the Waypoint Review or Waypoint Edit Page.
2. Highlight the waypoint name, symbol, or field you want to change, and press **ENTER**.
3. Use the **ROCKER** to select a symbol or enter data, and Press **ENTER** when finished.



### To edit the next waypoint in the list:

1. Highlight **Next** and press **ENTER**. The Waypoint list appears with the next waypoint highlighted.
2. Press **ENTER** to edit that waypoint.

### Organizing Waypoints into Categories

You can organize your waypoints into categories, to help manage your waypoints. For example, you can create a Vacation category that stores all of the waypoints you will use for your vacation. When the vacation is over, you can delete all the waypoints in that category. You can create up to 15 categories.

### To create a category:

1. From any of the waypoint pages or the Points tab, press **MENU** to open the options menu.
2. Select **Edit Categories**, and press **ENTER**.
3. Highlight **Add**, and press **ENTER**.

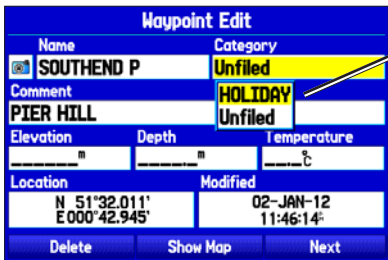


Entering a new category

4. Use the **ROCKER** to enter a name for the category.
5. Highlight **Save**, and press **ENTER**.

### To assign a category to a waypoint:

1. Open the Waypoint Edit Page. (You can also change the category on the New Waypoint Page.)
2. Select the **Category** field, and press **ENTER**.
3. Select the category to which you want to assign the waypoint, and press **ENTER**.



Select the category to which you want to assign the waypoint.

Waypoint Page

### To delete a category:

1. With the Waypoint Categories window open, highlight the category you want to delete, and press **MENU**.



2. Select **Delete Category**, and press **ENTER**.
3. Press **ENTER** again to delete the category.

## Deleting Waypoints

You can delete waypoints from the waypoint list in the Points tab or from the Waypoint pages. To delete a waypoint from the Waypoint Page, use the **ROCKER** to highlight the on-screen **Delete** button and press **ENTER**.



**NOTE:** When you delete a waypoint from the list, it cannot be recovered from the unit. Back up important waypoints to a computer using the PC cable and interface software, such as MapSource Trip & Waypoint Manager, or write them down.

### To delete a waypoint from the User Points tab:

1. From the **Points** tab, use the **ROCKER** to highlight the waypoint you want to delete.
2. Press **MENU**, highlight **Delete Waypoint**, and press **ENTER**. A confirmation message appears.



3. Press **ENTER** to confirm.

**To delete waypoints by symbol or category:**

1. On the User sub tab, highlight a waypoint to delete, and press **MENU**.
2. Highlight **Delete by Symbol** or **Delete by Category**, and press **ENTER**.
3. When deleting by symbol, highlight the symbol of the waypoint you want to delete, and press **ENTER**. When deleting by category, select the category you want to delete from the list, and press **ENTER**.
4. Highlight **OK**, and press **ENTER** to confirm. Choose **Cancel** or press **QUIT** to exit without deleting the waypoint.

**To delete waypoints by distance:**

1. On the User sub tab, highlight a waypoint to delete, and press **MENU**.
2. Highlight **Delete By Distance**, and press **ENTER**.
3. Select **Less Than** or **More Than** and enter the distance using the **ROCKER**.
4. You can select a waypoint or point of interest as the **From** location. Highlight the **From** field and press **ENTER**. From the Find menu, select a location and press **ENTER**. When **OK** is highlighted, press **ENTER**.
5. Highlight **Delete** and press **ENTER** to delete all waypoints within the set location. Choose **Cancel** or press **QUIT** to exit without deleting the waypoints.

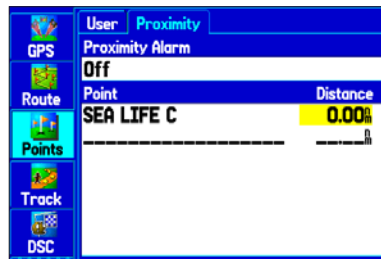
**Proximity Points**

Use the Proximity Points tab to define an alarm circle around a stored waypoint location. The alarm circle can help you avoid reefs, rocks, or restricted waters. Up to 100 waypoints can be listed with a maximum alarm radius of 99.99 nautical miles, statute miles, or kilometers.

If a proximity alarm circle overlaps an existing alarm circle, a “Proximity Overlaps Another Proximity Waypoint” message appears. Because the unit only alerts for one of the overlap points, use caution when navigating in these areas. If you enter an alarm circle overlap, you are only alerted to the closest proximity waypoint.

**To turn proximity alarms on or off:**

1. Highlight the **Points** tab on the Main Menu, and then select the **Proximity** sub tab.



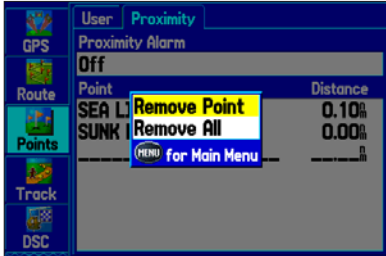
- 2. Use the **ROCKER** to highlight the field below **Proximity Alarm**, and press **ENTER**.
- 3. Select the **On** or **Off** setting and press **ENTER**.

**To add a proximity waypoint:**

- 1. From the Proximity Points tab, use the **ROCKER** to highlight an empty line on the Proximity List, and press **ENTER**. The Find Menu appears.
- 2. Select a waypoint or point of interest from the Find menu.
- 3. With **OK** highlighted, press **ENTER** to select the point. The distance field is now highlighted. Press **ENTER** to begin entering the proximity radius.
- 4. Use the **ROCKER** to enter a distance value (up to 99.99 units) and press **ENTER**.

**To clear one or all proximity waypoints from the list:**

- 1. Highlight the **Points** tab on the Main Menu, and then select the **Proximity** sub tab.
- 2. Use the **ROCKER** to highlight the proximity waypoint to clear, and press **MENU**.



**Proximity Points Tab Options Menu**

- 3. To clear a single alarm, highlight **Remove Point**, and press **ENTER**. To clear all proximity waypoints, select **Remove All**, and press **ENTER**.
- 4. Use the **ROCKER** to highlight **OK**, and press **ENTER** to confirm.

## Managing Your Tracks

The GPSMAP 278 draws an electronic breadcrumb trail or track log on the Map Page as you travel. The track log contains points along its path, including time, and location for each point.

The track log starts recording as soon as the GPSMAP 278 gets a location fix. For the best results, clear the track log before you start traveling because when the track log is full, new track points overwrite the oldest track points.

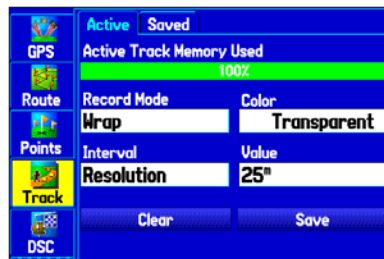
The percentage of memory used by the current track log appears at the top of the Active tab. After the track log is cleared, it shows zero percent. When the track log reaches 100%, the most recent track points start to overwrite the least recent track points (if **Wrap** is selected for **Record Mode**). To avoid losing track points, save the track log when it approaches the 99% mark.

### Setting Up and Saving Your Tracks

You must save the track log before you can use the **Navigate Track** feature. The **Save** feature allows you to store up to 15 track logs from certain times and dates.

#### To access the Track tab:

1. Press **Menu** twice to open the Main Menu.
2. Use the **ROCKER** to highlight the **Track** tab.



Active Track Tab

**Record Mode—Wrap** records over the oldest tracks when the track log reaches 100%. **Fill** records a track log until the track log is full (100%). When **Off** is selected, the unit does not record tracks.

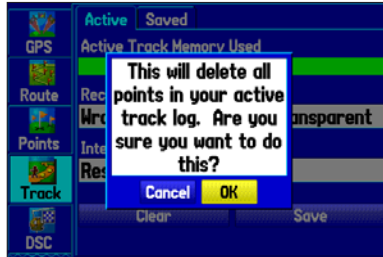
**Interval—Distance** records track points after a specified distance is traveled. **Time** creates track points after a specified time has elapsed. **Resolution** records track points based on the resolution. The higher the resolution entered, the more points the unit creates to make the track.

**Color**—select a color for the track when it appears on the map.

**Value**—records a track according to the **Interval** and **Value**. Enter a specific distance, time, or resolution.

### To clear the track log:

1. Highlight the **Track** tab, on the Main Menu, and then highlight the **Active** sub tab.
2. Highlight the **Clear** button, and press **ENTER**. A confirmation message appears.



Clearing the Track Log

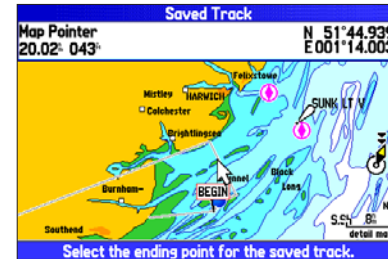
3. Highlight **OK**, and press **ENTER**.
4. Press **QUIT** to exit.

### To save the entire track log:

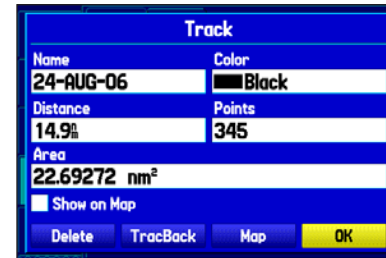
1. Highlight the **Track** tab, on the Main Menu, and then highlight the **Active** sub tab.
2. Select **Save**, and press **ENTER**. A message appears asking if you want to save the entire track.
3. To save the entire track, highlight **Yes**, and press **ENTER**.

### To save a portion of the track log:

1. On the Active sub tab, select **Save**, and press **ENTER**.
2. To save only a portion of the track, highlight **No** and press **ENTER** when a message appears.
3. Select a beginning point, and press **ENTER**.



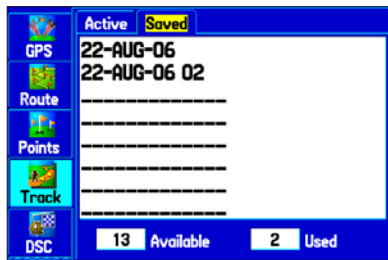
4. Select an ending point, and press **ENTER**.



5. Highlight **OK** and press **ENTER** to save the track.

## Saved Tracks

The Saved sub tab lists all of the saved tracks in your unit. Press **MENU** to open the Saved tab options menu.



**Review on Map**—shows the highlighted track on the Map Page.

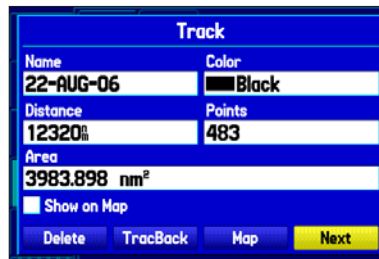
**TracBack**—navigates the track. You can either navigate the track as it is saved, or you can navigate the track in reverse.

**Delete Track**—erases the highlighted track from the unit's memory.

**Delete All**—erases all tracks from the unit's memory.

## To edit a track:

1. Highlight the **Track** tab on the Main Menu, and then select the **Saved** sub tab.
2. Select a track to edit, and press **ENTER**.



3. Highlight the **Name** field, and press **ENTER**. Use the **ROCKER** to change the name, and press **ENTER**.
4. Select a different display color to show the track on the map.
5. Highlight the box next to **Show on Map**, and press **ENTER** to show the track on the map.
6. To begin a TracBack, highlight **TracBack**, and press **ENTER**.
7. To view the track on the map, highlight **Map**, and press **ENTER**. Press **QUIT** to return to the Track tab.
8. Highlight **OK**, and press **ENTER** to save your changes.



## Navigating a Saved Track

You can save your track log to use later as a TracBack, which reduces your track log into a route with up to 300 turns. When initiated, a TracBack route leads you back to the oldest stored track log point. It is a good idea to clear the existing track log before you start your current trip. Also, you must save an active track log before you can navigate it as a TracBack.

### To activate a TracBack using the NAV key:

1. Press **NAV**, highlight **Navigate Track**, and press **ENTER**.
2. Highlight the track you want to navigate, and press **ENTER**.



Selecting a Saved Track

3. Use the **ROCKER** to select the point you want to navigate to (TracBack to), and press **ENTER**.

## TracBack Tips

When a TracBack is initiated, the GPSMAP 278 divides the track into segments called legs. Up to 300 temporary turns are created to mark the most significant features of the track in order to duplicate your exact path as closely as possible. To get the most out of the TracBack feature, remember these tips:

- Always clear the track log at the point that you want to go back to (such as a dock or campsite).
- The **Record Mode** option on the Active Track tab must be set to **Fill** or **Wrap**.
- If the track log **Interval** option on the Active tab is set to the **Time** option, the route might not navigate your exact path (keep the interval set to Resolution for best performance).
- If the receiver is turned off or satellite coverage is lost during your trip, TracBack draws a straight line between any point where coverage was lost and where it resumed.
- If the changes in distance and direction of your track are too complex, 300 waypoints might not mark your path accurately. The receiver then uses the most significant points of your track so there are fewer changes in direction.

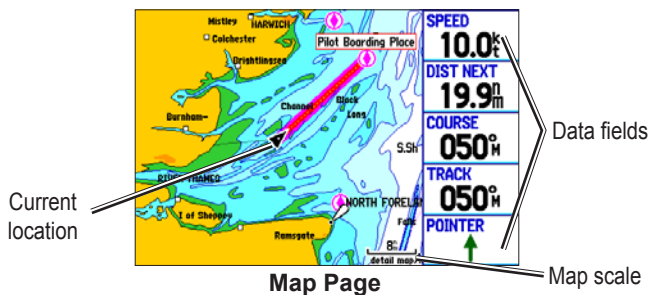
## MARINE MODE PAGES

Five pages are available in Marine Mode—Map, Compass, Highway, Active Route, and Position Data. An optional Sonar Page is available when a GSD 20 or GSD 21 sounder module is connected.

### Map Page

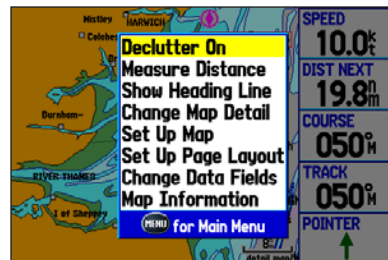
When you turn on the GPSMAP 278, the Map Page appears after the unit acquires a satellite signal. The position arrow (▲) shows your current location on the map.

The Map Page shows map information (digital cartography) that includes nav aids, lakes, rivers, coastlines, cities, and highways. Use the zoom keys (IN and OUT) to adjust the Map Page scale.



### Map Page Options Menu

Press MENU to open the options menu.



**Declutter On (Off)**—hide unwanted map items such as highways to declutter the display (page 47).

**Measure Distance**—measure distance between two map items (page 48).

**Show (Hide) Heading Line**—turn the heading line on or off.

**Set Up Map**—set up how the Map Page appears (page 44).

**Set Up Page Layout**—select the page layout (page 43).

**Change Data Fields**—change onscreen data fields (page 43).

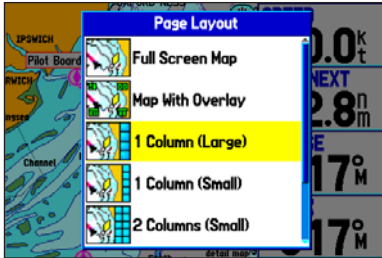
**Map Information**—review maps loaded on your GPSMAP 278 (page 44).

## Changing the Page Layout and Data Fields

By default, five data fields appear on the right side of the Map Page. You can select how the fields are shown and what information each field contains.

### To change the map page layout:

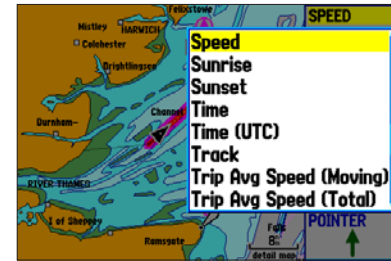
1. Press **MENU** to open the options menu.
2. Highlight **Set Up Page Layout**, and press **ENTER**.



3. Select a page layout option, and press **ENTER**.

### To change a data field display:

1. Press **MENU** to open the options menu.
2. Highlight **Change Data Fields**, and press **ENTER**.
3. Highlight the data field to change, and press **ENTER**.
4. Press up or down on the **ROCKER** to highlight the type of data you want to show, and press **ENTER**.



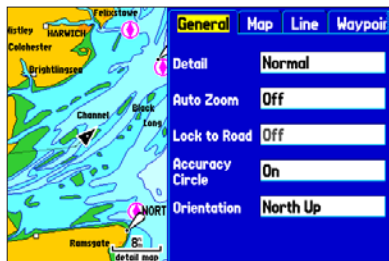
5. Press **QUIT** to exit.

## Setting Up the Map Page

Use the Set Up Map option to set how items appear on the Map Page.

### To change a map setup option:

1. On the Map Page, press **MENU** to open the options menu.
2. Highlight **Set Up Map**, and press **ENTER**.



Setting up the Map Page

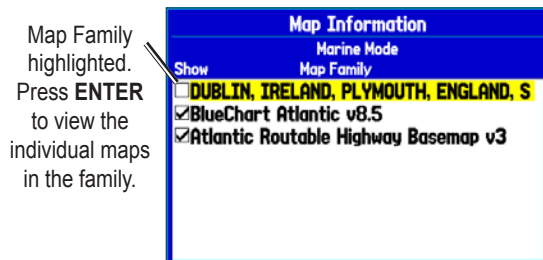
3. Press left or right on the **ROCKER** to highlight a tab; press up or down on the **ROCKER** to highlight to the field you want to change, and press **ENTER**.
4. Press up or down on the **ROCKER** to highlight a setting, and press **ENTER**.
5. Press **PAGE** or **QUIT** to exit.

## Viewing Additional Map Data

Use the Map Information page to view the data loaded on your GPSMAP 278 unit and data card.

### To review/change map information:

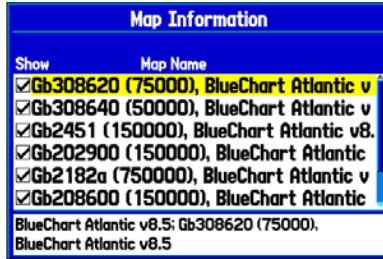
1. On the Map Page, press **MENU**.
2. Highlight **Map Information**, and press **ENTER**. The first page shows the Map Families stored on the data card and unit and whether they are shown on the Map Page.



Map Information Page

3. To change the setting for a map family, highlight the box next to the map family name and press **ENTER** to select (check mark) or deselect (no check mark) the **Show** setting.
4. To view the list of maps within a map family, highlight the name of the map family, and press **ENTER**.

5. When using map loaded to a data card, you can view detailed information about an individual map, highlight the Map Name, and press **ENTER**. Highlight **OK**, and press **ENTER** to exit the Map Information page.



6. To select/deselect individual maps (data card maps only) for display on the Map Page, highlight the box next to the map you want, and press **ENTER** to check/uncheck the **Show** box.  
OR  
Press **MENU**, select one of the options (**Show All**, **Hide All**, or **Show Defaults**), and press **ENTER**.
7. Press **QUIT** to exit the Map Information Page.

## Map Orientation

There are three map orientation options: North Up orients the map like a paper map. Track Up orients the map in the direction of travel. Course Up orients the map so the direction of navigation is always up. When using Track Up or Course Up, the North arrow indicates the orientation. To change the map orientation, press **MENU** to open the Map Page. Press **MENU** again. Select **Set Up Map** and press **ENTER**. See page 43 for information.

## Zooming In and Out of the Map

The map display has 28 available zoom scales ranging from 5 m to 800 nm (5 m to 1200 km). The map scale is controlled by the **IN** and **OUT** keys, with the current scale shown at the bottom right of the data window.



**NOTE:** The scale value represents the distance from one end of the scale bar (3%) to the other.

### To select a map scale (zoom in and out):

Press the **OUT** key to zoom out; press the **IN** key to zoom in.

The GPSMAP 278 has a built-in worldwide land database. The unit shows cartography as long as chart information is available for the zoom scale you selected.

Map coverage conforms to the following conditions:

- Cartography is shown when the selected zoom scale is covered by either the internal basemap or other MapSource data loaded onto a data card.
- When the selected zoom scale is covered by both the internal database and data card map information, the cartography with the best resolution appears.
- When the selected zoom scale exceeds the resolution of the data in use, “overzoom” appears below the map scale.

80<sub>m</sub>

**overzoom**

**No Additional Data is Available**



- When internal data (such as MapSource data) is used, “detailed map” appears below the map scale.

1.2<sub>k</sub><sub>m</sub>

**detail map**

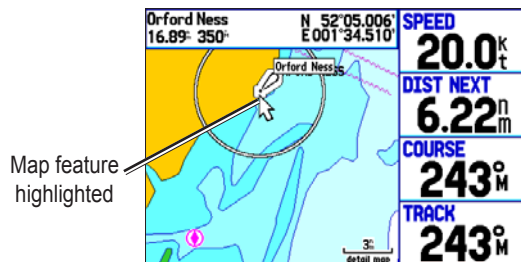
**Using Internal Detailed Maps**

## Panning the Map

Use the panning arrow  to pan the map to view other map areas. As you pan past the edge of the current map display, the screen moves to provide continuous map coverage. The position icon  stays in your present location and might not be visible on the screen when you pan the map.

### To pan the map:

Press up, down, right, or left on the **ROCKER**. The panning arrow moves the map so you can view different parts of the map.



As you move the arrow, the distance and bearing from your present location to the arrow appears in the data window, along with the arrow's position coordinates. When you zoom in pan mode, the arrow stays centered on the screen. When the arrow is stationary, fixed coordinates appear in the position field, and the distance and bearing from your present location update as you move.

### To re-center your position on the screen:

Press **QUIT**. The map automatically moves to show your present location, and the unit returns to position mode.

You can also use the arrow to select on-screen map items, which allows you to review a selected item directly from the map display.

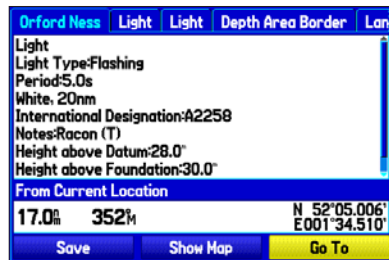
### To view details about an on-screen point:

1. Use the **ROCKER** to move the arrow to a waypoint or map item. If several items are grouped closely together, zoom in closer for a better view.

When a waypoint or map item is selected, it is highlighted on-screen with the name and location shown at the top of the screen, along with the distance and bearing from your current location.

2. Press **ENTER** to view more information about the point. The information and on-screen buttons shown vary depending on the type of item selected. In some cases, additional information tabs appear at the top of the Information Page or Waypoint Page.

3. Use the **ROCKER** to highlight the extra tabs and view the information.
4. Select an on-screen button and press **ENTER**. Press **QUIT** to exit the Information Page.



#### Map Feature Information Page

(Optional BlueChart g2 data shown)

### *Clearing Unwanted Details from the Map*

You can remove items from the Map Page display (declutter the display) to remove unwanted items, such as highways.

#### To declutter the Map Page:

1. On the Map Page, press **MENU** to open the options menu.
2. Highlight **Declutter**, and press **ENTER**.
3. Press **ENTER** again to restore the detail to the map display.

## Measuring Distance

You can measure the distance and bearing between two map items.

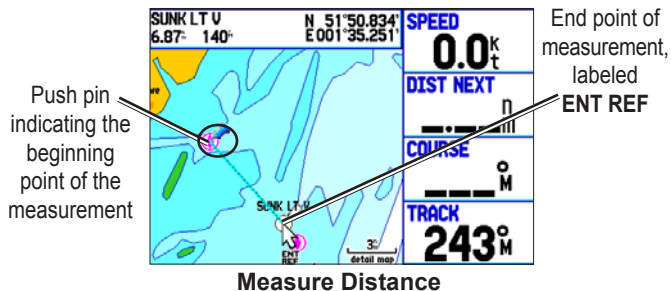
### To measure the bearing/distance between two points:

1. On the Map Page, press **MENU** to open the options menu.
2. Highlight **Measure Distance**, and press **ENTER**. An on-screen arrow appears on the map at your present location with **ENT REF** below it.



3. Move the arrow to the reference point (the starting point that you want to measure from), and press **ENTER**. A push pin icon marks the starting point.

4. Move the arrow to the point want to measure to. The bearing and distance from the reference point and arrow coordinates appear in the data window at the top of the display.

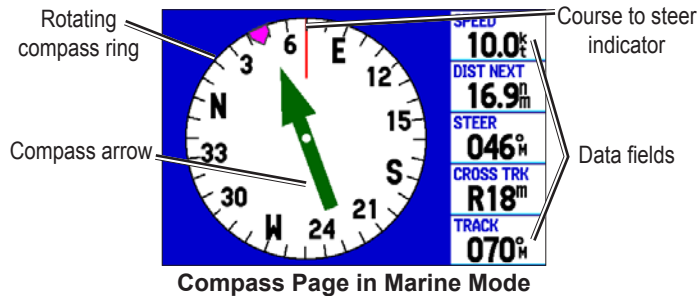


5. Press **QUIT** to finish.



## Compass Page

During active navigation, the Compass Page guides you to your destination with a graphic compass display and a bearing pointer. When the pointer is pointing straight up, you are heading directly to your destination.



The middle of the page features a rotating compass ring that shows your course over ground (track) while you are moving. Your present course over ground is indicated at the top of the compass ring. The direction of the destination (bearing) relative to the course over ground is indicated by an arrow in the middle of the compass ring and a course to steer “bug” on the outside of the compass ring. The course to steer represents the direction to steer to get back to the course line.

If the arrow points up, you are going directly to the waypoint. If the arrow points any direction other than up, turn toward the arrow until it points up, and then continue in that direction.



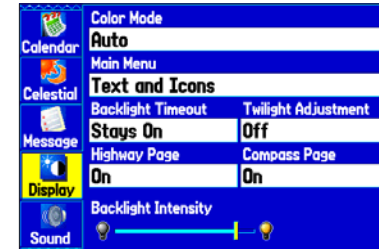
**NOTE:** You must be moving for the compass to accurately update and show your heading.

### Turning On the Compass Page

The Compass Page is on by default in Marine Mode but off by default in Automotive Mode.

#### To show the Compass Page in Automotive Mode:

1. Highlight the **Display** tab on the Main Menu
2. Highlight the **Compass Page** field, and press **ENTER**.
3. Select **On**, and press **ENTER**.

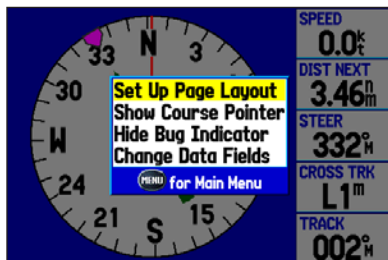


#### Turning on the Compass Page

## Compass Page Options Menu

Use the options menu on the Compass Page to customize the Compass Page. For definitions of data field options, see page 120.

Press **MENU** to open the Compass Page options menu.



**Set Up Page Layout**—select the page layout.

**Show Course Pointer/Show Compass**—toggle between showing the Course Pointer, which shows how far off you are from your course and how to get back on course, or show the compass arrow. The Course Pointer is also referred to as a CDI or Course Deviation Indicator.

**Show (Hide) Bug Indicator**—shows the course to steer bug indicator (the purple tick mark on the compass ring).

**Change Data Fields**—change onscreen data fields.

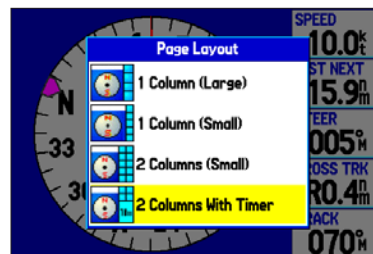
## Using the Marine Timer

The Marine Timer, specifically designed for sail boat racing, allows you to easily count up or down by specified time increments. As is common in sail boat racing, there is often a 5-minute warning countdown, followed by a 4-minute preparation countdown, and finally a one-minute final countdown. Then during the race, mariners might want to count up to keep track of their time.

You can use your GPSMAP 278 to perform each of these different countdowns.

### To open the Marine Timer:

1. Press **MENU** on the Compass Page.
2. Use the **ROCKER** to highlight **Set Up Page Layout**, and press **ENTER**.
3. Highlight **2 Columns With Timer**, and press **ENTER**. The Marine Timer appears in the lower-right corner.



### To use the Marine Timer:

1. Press the **ROCKER** up or down to select the time you want to count. Five (5) minutes is the default.
2. Press **ENTER** to start the timer. Use the **ROCKER** during the timing to quickly select a different length of time.
3. Press **ENTER** to stop timing.



Marine Timer on the Compass Page

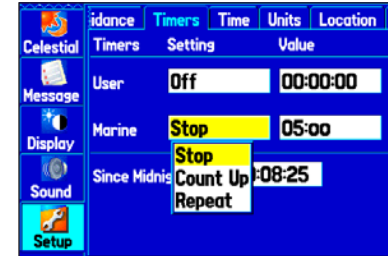
As discussed previously, the timer is set to count down five minutes. If you want to change the length of time and the behavior or the timer, open the Timers Setup tab on the Main Menu.



**NOTE:** You can set the timer countdown for up to 60 minutes.

### To set the Marine Timer:

1. Highlight the **Setup** tab on the Main Menu, and then select the **Timers** sub tab.
2. Highlight **Stop** next to **Marine** to change the timer's behavior.



3. Highlight the time field, press **ENTER**, and then enter a new time.



## Highway Page

The Highway Page is available in both Marine Mode and Automotive Mode



Highway Page

When you are navigating, the Highway Page provides digital and graphic steering guidance to the destination. The right side of the page features user-selectable data fields showing useful navigation information. The compass ribbon at the top of the page shows your current heading, represented by the violet bar. The red vertical bar represents the bearing to your course. To stay on course, steer toward the red vertical indicator (or arrows) until it lines up with the violet bar in the middle. The bottom of the screen provides visual guidance to the waypoint on a graphic highway display. The line down the center of the highway represents your desired track line.

### To hide/show the Highway Page:

1. Highlight the **Display** tab on the Main Menu.
2. Highlight the **Highway Page** field, and press **ENTER**.
3. Select **Off** to hide or **On** to show, and press **ENTER**.

### Using the Highway Page

To stay on course, steer toward the violet bar (or arrows) until it lines up with the red bar in the middle. The bottom section of the screen provides visual guidance to the waypoint on a graphic highway display. The line down the center of the highway represents your desired track line.

As you head toward your destination, the highway perspective moves to indicate your progress to the waypoint and which direction you should steer to stay on course. If you are navigating a route, the Highway Page shows each route waypoint in sequence connected by a black “road” with a white line down the middle, which is your desired track line. Nearby waypoints not in the active route can also be shown. You can zoom in or out to show a larger or smaller view of the highway.

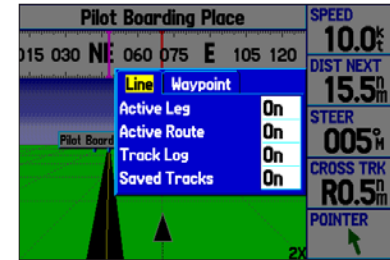
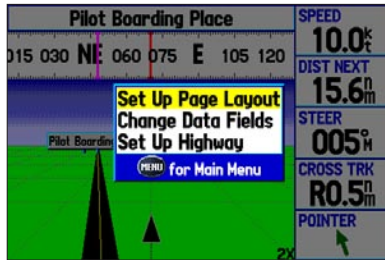
### To change the highway perspective scale:

Press **IN** to zoom in; press **OUT** to zoom out.

## Highway Page Options Menu

Use the Highway Page options menu to define the data fields and select which waypoints and tracks appear on the screen. The data fields, located along the right side of the page, provide various types of useful data.

Press **MENU** to open the Highway Page options menu.



Set Up Highway

**Set Up Page Layout**—select the page layout.

**Change Data Fields**—change onscreen data fields.

**Set Up Highway**—shows an options menu with two sub tabs:

**Line** and **Waypoint**. Each tab has on/off settings for options including enabling the line for the Active Leg and Track Log.

## Active Route Page

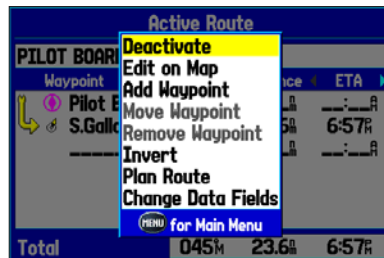
When you are navigating a route using your GPSMAP 278, the Active Route Page shows each point (waypoint or map item) of the active route, with the point name, course, distance, and several other fields of information. The current destination point, the active point, is marked with an arrow icon. As you navigate a route, the list automatically updates to indicate the next active point. The Active Route and Route Review Pages share many of the same features and options.



Active Route Page

## Active Route Page Options

Press **MENU** to open the Active Route Page options menu.



**Deactivate**—stop route navigation.

**Edit on Map**—edit the route on the map. See page 23.

**Add Waypoint**—insert a point before the highlighted waypoint or add a point to the end of the route.

**Remove Waypoint**—delete a selected waypoint from a route.

**Invert**—reverse the order of the route.

**Plan Route**—enter information about your route to more accurately provide you with arrival times.

**Change Data Fields**—customize the data fields shown on the Active Route Page.

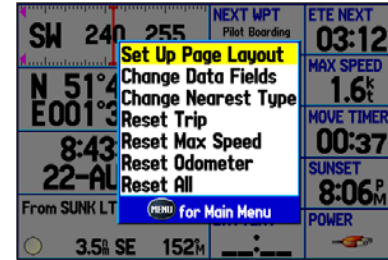
## Position Data Page

The Position Data Page shows important navigation data while navigating a route in Marine Mode. By default, the Position Data Page shows a compass ribbon, your current latitude and longitude, date and time, your location in relation to a prominent nearby landmark such as a waypoint or city, and eight user-selectable data fields. The compass ribbon appears at the top of the page to show your current heading with a red, vertical bar. To stay on course, steer toward the violet bar (or arrows) until it is aligned with the red bar.

060	075	E	NEXT WPT Pilot Boarding Place	ETE NEXT 02:00
N 51°38.944'	0.0k	1.6k	TTL. AVG SPD	MAX SPEED
E001°18.989'	TRIP ODOM 30.2 <sup>m</sup>	MOVE TIMER 00:23		
7:18:14 <sup>P</sup> 21-AUG-06	SUNRISE 5:46 <sup>A</sup>	SUNSET 8:09 <sup>P</sup>		
From Clacton-On-Sea, GBR:	BATTERY	POWER		
● 11.0k SE 148 <sup>m</sup>				

## Position Data Page Options

Press **MENU** to open the Position Data Page options menu.



**Change Nearest Type**—specify the type of item use as the nearest item (shown in the lower-left data field). The choices vary based on the current usage mode.

**Reset Trip**—clear trip information, except the maximum speed and the odometer.

**Reset Max Speed**—clear the maximum speed.

**Reset Odometer**—clear the running total of the distance traveled since the odometer was last reset.

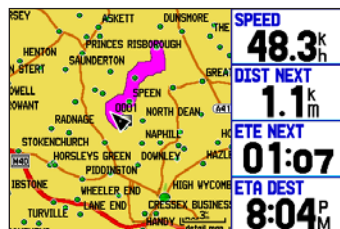
**Reset All**—clear all trip information including the maximum speed and odometer.

## AUTOMOTIVE MODE

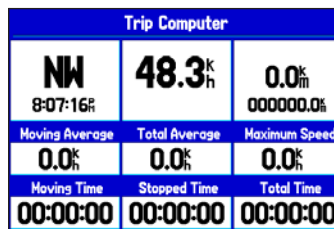
Your GPSMAP 278 comes preloaded with City Navigator Europe NT v 9.0, which contains detailed maps of major metropolitan areas in Europe, including motorways, national and regional thoroughfares, local roads, and points of interest such as food and drink, lodging, border crossings, petrol stations, hospitals and more.

### Automotive Mode Pages

Automotive Mode has two main pages (Map and Trip Computer) that are always available. Optional Highway and Compass pages can be turned on in Automotive Mode. When you are actively navigating, the Current Route Page is available if you are navigating a turn-by-turn route. The Active Route Page is available if you are navigating off-road.



Map Page



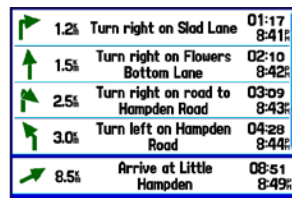
Trip Computer Page



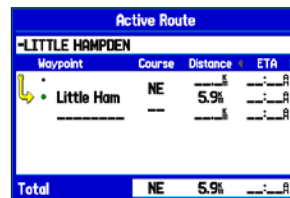
Compass Page



Highway Page



Current Route Page



Active Route Page



## Navigating to a Destination

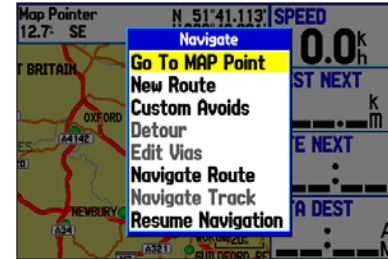
You can navigate to your destination in Automotive Mode using the Map Page. As you travel, your GPSMAP 278 guides you to your destination with voice prompts, arrows, and directions along the top of the screen. When you are actively navigating, you see a magenta line that always runs from your current location to the destination or to the next turn on the Map Page. You can use the Map Page, Compass Page or Highway Page, to help navigate.

You can navigate to a destination using one of the following methods:

- Select a point on the map and press the **NAV** key.
- Press the **NAV** key to navigate a new route using the Find Menu, or activate a saved route or track.
- Press the **FIND** key to search for a particular item and create a route to it.

## Navigate Options Menu

Press **NAV** to open the Navigate options menu.



**Go To Point**—select a waypoint other point from the Find menu to which to navigate.

**New Route**—create a new route (page 59).

**Custom Avoids**—set up roads to avoid when navigating (page 61).

**Detour**—create a detour route while navigating (page 62).

**Edit Vias**—add points through which you want to travel when navigating (page 62).

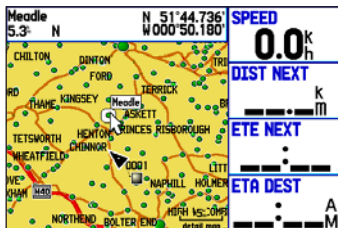
**Navigate Route**—select a route to navigate. (Page 60)

**Navigate Track (TracBack)**—select a saved track to navigate (page 41).

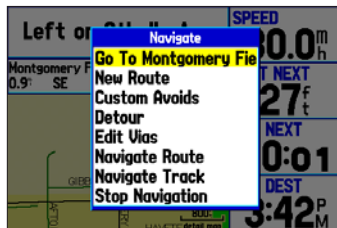
**Stop (Resume) Navigation**—start or stop navigating (page 58).

## To navigate (Go To) a point on the map:

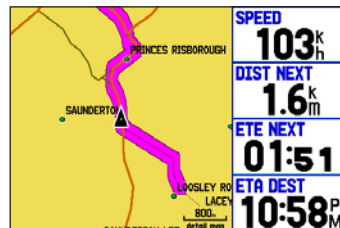
- 1 Highlight a point to navigate to, and press **NAV**.



- 2 Highlight **Go To <point name>** and press **ENTER**.



- 3 Follow the magenta line created on the Map Page.

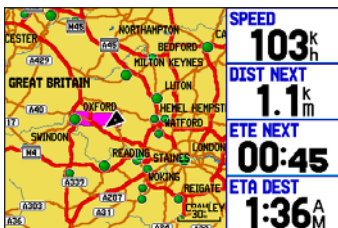


## Stopping and Resuming Navigation

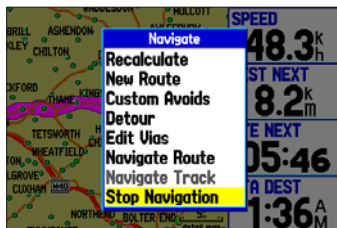
When navigating to a point, you can stop navigation. For example, if you are on a long car trip, but you want to stop for dinner, you can stop navigation and resume after dinner.

### To stop navigation:

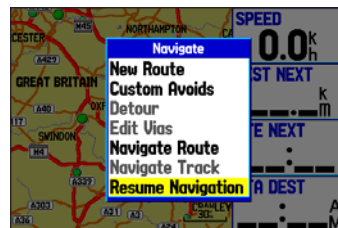
- 1 While navigating to a point, press **NAV**.



- 2 Highlight **Stop Navigation**, and press **ENTER**.

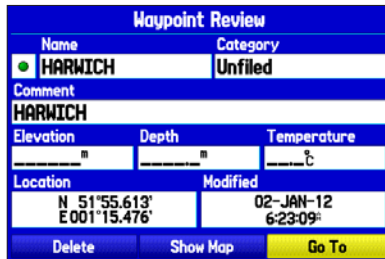


- 3 Highlight **Resume Navigation**, and press **ENTER**.



**To create a new route:**

1. Press **NAV** to open the Navigate menu.
2. Highlight **New Route**, and press **ENTER**.
3. From the Find menu, highlight **Waypoints**, and press **ENTER**. (You can also choose to go to other points, such as **Cities** or **Exits** from this list. The steps vary only slightly from those listed for waypoints.)
4. Select a waypoint from the list, and press **ENTER** to open the Waypoint Review Page.



**Waypoint Review Page**

Activating a Go To using the Find menu

5. Highlight the **Go To** button, and press **ENTER** to begin navigation.

**To go to a destination using the Find menu:**

1. Press **FIND** to open the Find menu.
2. Using the **ROCKER**, highlight a category, such as **Food & Drink**, and press **ENTER**.
3. Press **ENTER** and use the **ROCKER** to begin entering the letters contained in the item name. The list begins to sort by the items which contain the letters you are entering. Press **ENTER** when finished.



4. Highlight the item you want from the list, and press **ENTER**.
5. Highlight the **Go To** button, and press **ENTER**.

For complete information about finding an item, see the “[Finding an Item](#)” section on page 17.

## Following a Saved Route

Use the Navigate menu to follow a saved track or route. If you want to follow roads on your route, press **MENU** and select **Follow Roads** on the Active Route Page.

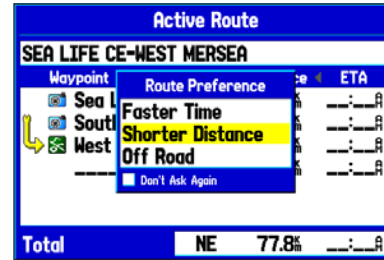
### To follow a saved route in Automotive Mode:

1. Press **NAV** to open the Navigate menu.
2. Highlight **Navigate Route**, and press **ENTER**.
3. Highlight the route you want to navigate, and press **ENTER**.



4. Press **MENU** to open the options menu.

5. Highlight **Follow Roads**, and press **ENTER** to create a turn-by-turn route (auto-route), which appears in the Current Route Page.

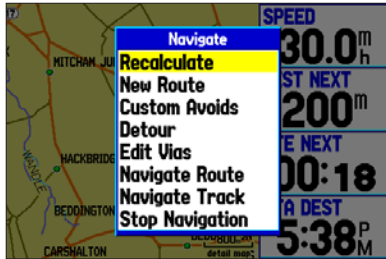


You can also navigate a saved route from the Route tab on the Main Menu.

## Editing Your Route

When you are navigating a route, you can edit that route. You can add areas and roads to avoid as well as temporary detours to your current route. You can also add stops along your trip, called Via Points.

While navigating, press **NAV** to open the Navigate menu.



Navigate Menu in Automotive Mode

While navigating a route

## Entering Custom Avoids

The Custom Avoids feature allows you to enter specific areas and roads to avoid when navigating. Custom avoids apply to all routes, but detours apply to only the active route. You can add custom avoids while you are navigating a route or before you navigate.

### To enter a custom avoid:

1. Press **NAV** while navigating to a destination.  
OR  
Open the Map Page, and press **MENU**.
2. Select **Custom Avoids**, and press **ENTER**.
3. Press **ENTER** when the **Add Avoid** button is highlighted.
4. Select **Avoid Road** or **Avoid Area**, and press **ENTER**.
5. Use the **ROCKER** to move the arrow to the first point in the avoidance area. Press **ENTER** to select the first point.
6. Move the arrow to the end point, and press **ENTER**. During route calculation and navigation, the GPSMAP 278 avoids the area within the box or the selected area of the road.
7. When finished, highlight the **OK** button, and press **ENTER**.

## Creating a Detour

If there is road construction or some other form of a detour while navigating a route, you can have your GPSMAP 278 create a detour route for you.

### To create a detour:

1. While navigating a course, press **NAV**.
2. Select **Detour** from the Navigate menu.
3. Select a distance, and press **ENTER**. The GPSMAP 278 recalculates your course based on your detour distance.
4. To end the detour manually, press **NAV** again, and select **Cancel Detour**.

## Adding and Editing Stops (Via Points)

You can add Via Points—points through which you would like to travel—to your route using the **Edit Vias** option.

### To add Via Points to your route:

1. While navigating your route, press **NAV** to open the Navigate menu.
2. Use the **ROCKER** to select **Edit Vias**, and press **ENTER**. The Add/Edit Vias window opens.
3. Highlight **Add Via Point**, and press **ENTER**.



Add/Edit Vias Page

Showing the original route without Via Points

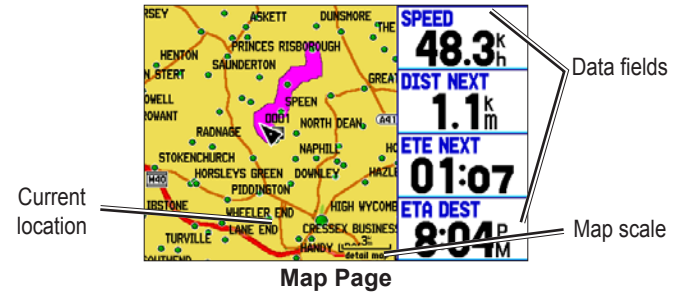
4. From the pop-up window, highlight either **Use Map** or **Use Find Menu**, and press **ENTER**.
5. If you selected **Use Map**, use the **ROCKER** to select an item on the map, and press **ENTER**.  
If you selected **Use Find Menu**, select an item from the Find menu as discussed in the “[Finding an Item](#)” beginning on page 17. Remember you can press **MENU** while the Find menu is open to find an item near another location, such as the destination. The new point is added to the route as shown on the Add/Edit Vias Page.
6. Repeat steps 3 through 5 until you have added all of the Via Points that you want. Highlight **Done**, and press **ENTER** to apply the new Via Points to the route.

## AUTOMOTIVE MODE PAGES

Automotive Mode has two main pages (Map and Trip Computer) that are always available. Optional Highway and Compass pages can be turned on in Automotive Mode. When you are actively navigating, the Current Route Page is available if you are navigating a turn-by-turn route. The Active Route Page is available if you are navigating off-road. For information about pages and features not discussed here, see the “[Marine Mode Pages](#)” section.

### Map Page

In Automotive Mode, by default, four user-selectable data fields appear on the right side of the screen that can be configured to display any one of the possible data options. The top of the screen shows the GPS status or the route leg. You can also add data fields to the page or select a full-screen map without data fields.








Press the zoom keys (**IN** and **OUT**) to change the map scale. Some items on the map appear only if the map is zoomed in to a certain level.

- Press **ENTER** to quickly declutter (remove unwanted items) from the Map Page.
- Press **MENU** to open the options menu for the Map Page.
- Show and hide the heading line from the options menu.
- Use the **ROCKER** to measure the distance between two objects on the map.
- Change the page layout and data fields to customize the Map Page.

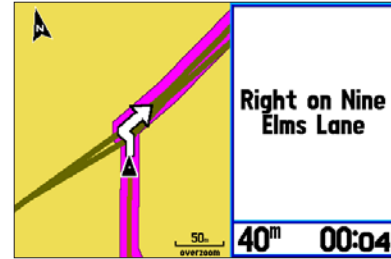
## Current Route Page

When navigating a route using your GPSMAP 278 in Automotive Mode, the Active Route Page shows each turn of the active route, with the distance to the turn, the street name, and estimated time to arrival and time of arrival. As you navigate a route, the turn list automatically updates to indicate the next turn at the top of the list.

	1.2%	Turn right on Slad Lane	01:17 8:41%
	1.5%	Turn right on Flowers Bottom Lane	02:10 8:42%
	2.5%	Turn right on road to Hampden Road	03:09 8:43%
	3.0%	Turn left on Hampden Road	04:28 8:44%
	8.5%	Arrive at Little Hampden	08:51 8:49%

Current Route Page

You can scroll through the entire list by moving the scroll bar up or down. Highlight any of the turns on the list and press **ENTER** to view the Next Turn Page for that turn. The Current Route and Next Turn Page display similar information using a different layout. The Next Turn Page shows your next turn on a map.



Next Turn Page

## Saving the Current Route

You can save the current route from the Current Route Page. Press **MENU** to save the route. Press **ENTER** when **Save Route** is highlighted. Your route is automatically saved, using the starting point and destination as the route name. Press **ENTER** when **OK** is highlighted to finish saving the route.



## Trip Computer Page

The Trip Computer Page shows important data while navigating a route in Automotive Mode. It indicates your current speed and other data about your trip, such as average speed and moving time.

Trip Computer		
<b>E</b> 7:36:11 <sub>R</sub>	<b>48.3<sup>k</sup><sub>h</sub></b>	<b>0.0<sup>k</sup><sub>m</sub></b> 000000.0%
Moving Average	Total Average	Maximum Speed
<b>4.7<sup>k</sup><sub>h</sub></b>	<b>0.0<sup>k</sup><sub>h</sub></b>	<b>2.9<sup>k</sup><sub>h</sub></b>
Moving Time	Stopped Time	Total Time
<b>00:00:23</b>	<b>24:31:44</b>	<b>24:32:07</b>

Trip Computer Page

Reset the Trip Computer before beginning a trip. If you make frequent stops, leave the GPSMAP 278 turned on in order to receive satellites. This allows the unit to accurately measure elapsed time during the trip.

Like the Map Page, the Compass Page features user-selectable data fields. For definitions of data field options, see to page 120.

## Trip Computer Page Options Menu

Press **MENU** to open the options menu. Highlight an option, and press **ENTER**.



**Set Up Page Layout**—choose the page layout and number of data fields.

**Change Nearest Type**—allows you to specify the type of item to be used as the nearest item [shown in the lower-left data field of the Position Data (2 Columns) layout]. The choices change based on the current Usage Mode.

**Reset (Trip, Max Speed, Odometer, All)**—reset the maximum speed, the odometer, everything but the maximum speed and odometer, or reset everything in the trip computer.

## MAIN MENU

The Main Menu provides access to various waypoint, system, navigation and interface management, and setup menus.



Main Menu

### To select a tab from the Main Menu:

1. From any page, press **MENU** twice to open the Main Menu.
2. Press up or down on the **ROCKER** to highlight the tab you want. The information for the highlighted tab automatically appears on the right. To highlight a sub tab, press left or right on the **ROCKER**, and then press up or down to select individual fields.

## Main Menu Tabs



**GPS**—view satellite information (page 67).



**Route**—create and store routes (page 67).



**Points**—view stored waypoints (page 68).



**Track**—record and save tracks (page 68).



**DSC**—set up digital select calling features (page 69).



**Sonar**—configure sonar options (page 71).



**Alarms**—define alarm settings (page 71).



**Calendar**—view sun/moon and hunting/fishing information for a specific day (page 73).



**Celestial**—view tide, hunting & fishing, and sun & moon information (page 74).



**Message**—view system-generated messages (page 78).



**Display**—adjust backlighting and page display (page 79).



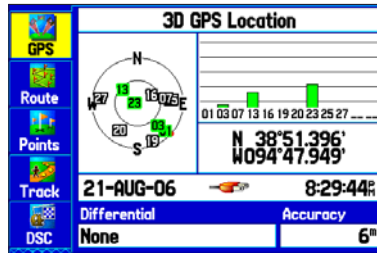
**Sound**—customize GPSMAP 278 sounds (page 80).



**Setup**—adjust system settings (page 81).

## GPS Tab

The GPS tab provides a visual reference of satellite acquisition, receiver status, and accuracy. The sky view and signal strength bars give an indication of what satellites are visible to the receiver and whether they are being tracked. For more information about GPS, see pages 4-6.



Main Menu—GPS Tab

## Route Tab

The Route tab shows all the routes currently stored in memory, along with a descriptive name for each route.

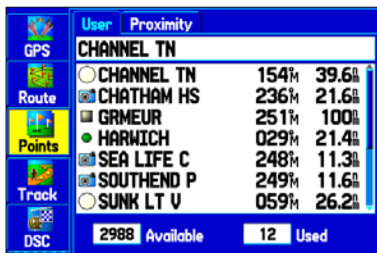
Use the Route tab create and store up to 50 reversible routes, with up to 300 points each. See the “[Creating and Using Routes](#)” section beginning on page 22 for more information about routes.



Main Menu—Route Tab

## Points Tab

The Points tab contains two sub tabs, **User** and **Proximity**, which allow you to manage a large number of waypoints quickly and efficiently. For more information about waypoints, see the “[Creating and Using Waypoints](#)” section beginning on page 28.



Main Menu—Points Tab

### User Sub Tab

The User sub tab shows a master list of all waypoints currently stored in memory. The total number of stored and available waypoints appears at the bottom of the User sub tab.

### Proximity Sub Tab

Use the Proximity sub tab to define an alarm circle around a stored waypoint location. See page 36 for more information.

## Track Tab

Use the Track tab to specify whether or not to record a track log, define how it is recorded, or save the track log data for future use. The Track tab is divided into two sub tabs: Active and Saved. For more information about tracks, see the “[Managing Your Tracks](#)” section beginning on page 38.



Main Menu—Track Tab

### Active Sub Tab

The Active sub tab is for the active log (the log currently being recorded.) It shows the amount of track memory used and current settings.

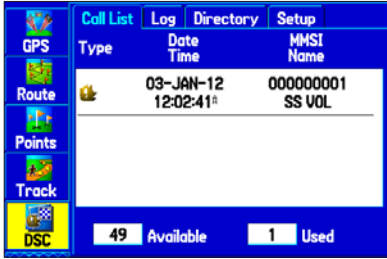
### Saved Sub Tab

The Saved sub tab shows a list of all saved tracks in your GPSMAP 278.

## DSC Tab

Use the DSC tab (Marine Mode only) to control and set up the Digital Selective Calling (DSC) features. DSC uses marine VHF radio and GPS to transmit and receive location information. DSC is used by mariners for distress calls and position reporting.

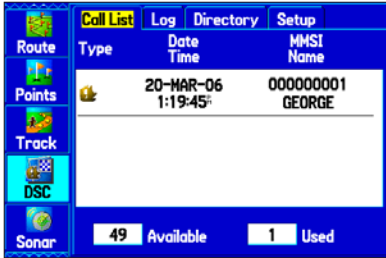
For more information about DSC and Maritime Mobile Service Identity (MMSI) numbers, see pages 116-117 in the “Appendix”.



DSC Page

## DSC Call List

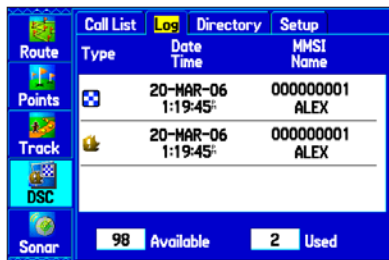
The Call List sub tab shows the 50 most recent calls, even if the unit is left unattended. The Call List only shows the most recent call from a vessel. If a second call is received, it replaces the first call in the Call List. Press MENU to sort the list and delete entries.



DSC Call List

## DSC Log

When DSC calls are received, they are automatically stored in the Log, with the most recent call at the top. The unit can store up to 100 calls; after 100 calls are received, the oldest log file is removed when a new call is received.

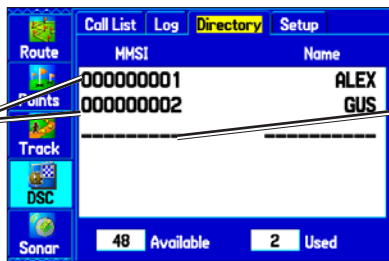


DSC Log

## DSC Directory

The DSC Directory is like phone book and can hold up to 50 entries.

DSC Directory entries. Press **ENTER** to open the entry review page.



DSC Directory list

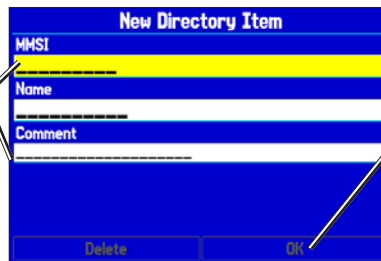
Blank entry. Press **ENTER** to add a Directory entry.

### To add a new directory entry:

1. Open the DSC Directory on the Main Menu.

2. Highlight the first blank space in the directory list and press **ENTER**.  
OR  
Press **MENU**, highlight **New Item**, and press **ENTER**.
3. Enter the MMSI number, the name, and any comments.
4. When finished, highlight **OK**, and press **ENTER**.

Enter the MMSI number, name, and a comment (if needed) in the fields.



New Directory Item Page

Highlight **OK** and press **ENTER** to save the Directory Entry.

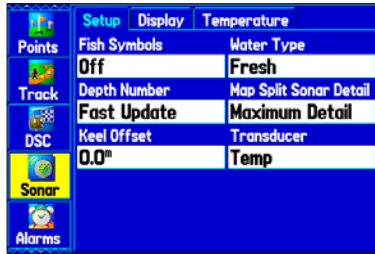
After creating a New Directory Item, the name created is attached to that particular MMSI number. If you return to the log, the new name appears under the corresponding MMSI number.

Another way to input a name is from the Entry Review Page or the DSC Distress Call or DSC Position Report pages. The Name and MMSI are sent to other Garmin GPS units: Only the MMSI numbers are sent to other non-Garmin DSC users.

## Sonar Tab

Use the Sonar tab to set up and configure sonar. See the “[Setting Up and Using Sonar](#)” section beginning on page 90 for more information about Sonar setup options.

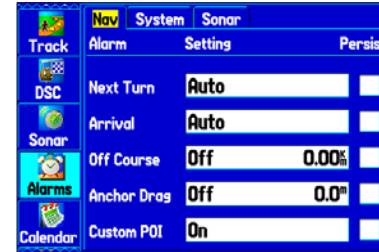
**NOTE:** You must have a GSD 20 or 21 sounder module connected to your GPSMAP 278 to use sonar.



Main Menu—Sonar Tab

## Alarms Tab

Use the Alarms tab to define alarm settings. When an alarm goes off, the alarm message appears on the GPSMAP 278 and the unit emits five (5) beeps.



Main Menu—Alarms tab

### To set an alarm:

1. Highlight the **Alarms** tab on the Main Menu.
2. Select an alarm to set, and press **ENTER**.
3. Change the setting to **On**, and press **ENTER**. If necessary, highlight the next field to the right and press **ENTER**, enter the settings you want,
4. Press **ENTER** to finish.

When you set a persistent alarm, the alarm message appears on the screen and the GPSMAP 278 beeps until you press **ENTER** to acknowledge the alarm.

**To set a persistent alarm:**

1. Highlight the **Alarms** tab on the Main Menu.
2. Highlight the box next to the alarm you want to make persistent (for example, **Next Turn**).
3. Press **ENTER** to place a check mark in the **Persist** box.

**Navigation (Nav) Alarms**

**Next Turn**—set an alarm to indicate the next turn in a route. Select **Dist** to specify a distance before you reach the next turn to sound the alarm. Select **Time** to specify a time before the turn for the alarm to go off. Select **Auto** for the unit to provide a Next Turn alarm at its discretion.

**Arrival**—set an alarm to sound when you are a specified distance or time away from a destination waypoint. Select **Auto** for the unit to provide an arrival alarm at its discretion.

**Off Course**—set an alarm to sound when off course. Select **On**, and then enter a distance.

**Anchor Drag**—set an alarm to sound when you exceed a specified drift distance. Select **On**, and then enter a distance.

**Custom POI**—set an alarm to sound when approaching a custom POI.

**System Alarms**

**Clock**—set an alarm based on the unit's clock. Select **On**, and then enter a specific time that you want the alarm to sound. The GPSMAP 278 must be on for the clock alarm to work.

**Ext. (External) Voltage**—set an alarm to sound when the external voltage drops below a specified amount. Select **On**, and then enter a specific voltage.

**DGPS**—set an alarm to sound when the GPSMAP 278 loses a differential fix.

**Anchor Drag**—sets an alarm to sound when you exceed a specified drift distance. Select **On**, and then enter a distance.

**Accuracy**—set an alarm to sound when GPS accuracy falls outside of the user-set value. Select **On**, and then specify a distance.



## Sonar Alarms

**Shallow Water/Deep Water**—set an alarm to sound when you enter an area of water that is too shallow or deep. Select **On** and then specify a distance. You must be receiving sonar NMEA data for this function to work.

**Water Temp**—set an alarm to indicate if the water temperature has exceeded or dropped below a specific temperature, or fallen outside/inside a specific temperature range. Select **Above** or **Below** and then enter a specific temperature, or select **Inside** or **Outside** and enter a range of temperatures. You must be receiving sonar NMEA data for this function to work.

**Drift**—set an alarm to sound when you exceeded a specified drift distance. Select **On** and then enter a specific distance.

**Fish**—set an alarm to sound when fish are detected with sonar.

## Calendar Tab

Use the Calendar tab to plan trips, view sun and moon, and hunting and fishing information for the day.

Highlight an arrow and press **ENTER** to change the date in the view.



Calendar Tab in Day View

## Calendar Options

The options menu is available in all three calendar views. Press **MENU** to open the options menu. To view the Sun & Moon Information or Hunt & Fish sub tab, highlight **View Sun and Moon** or **View Hunt and Fish** and press **ENTER**.

**To add a route (or point) to the calendar:**

1. Highlight the **Calendar** tab on the Main Menu. The current day appears on the **Day View** sub tab.
2. Press **MENU** to open the options menu. Highlight **Add Route** (or **Add Point**) and press **ENTER**.
3. From the pop-up route list (or the Find menu if **Add Point** was selected), select the route you want to add to the calendar, and press **ENTER**.

**Day View Sub Tab**

The Day View sub tab shows sunrise and sunset times for your current date and location. A list of points and routes for the day appear in a list.

**Week View Sub Tab**

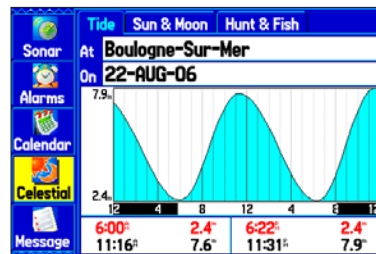
The Week View sub tab provides the same elements as Day view, but the entire week is visible. Days with added points or routes are shown highlighted in green. Icons for the points and routes assigned to the date are shown along the bottom of the screen.

**Month View Sub Tab**

The Month View sub tab provides the same elements as Day view, but the entire month is visible. Days with points or routes added to them are shown highlighted in green. Icons for points and routes assigned to the date are shown along the bottom of the screen.

**Celestial Tab**

The Celestial tab shows tide information, sun and moon information, and hunting and fishing information. You can view data for your current location, a location from the map, or a waypoint location. Also, you can select a different date and time, or use the current data.

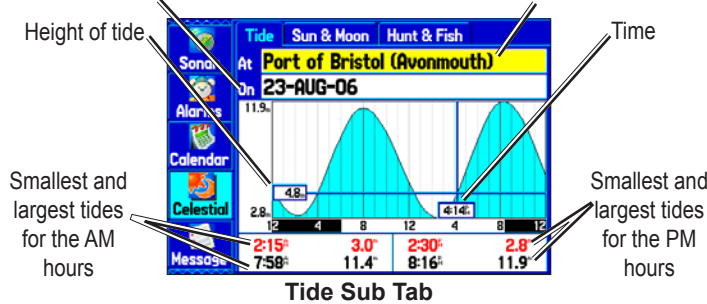
**Main Menu—Celestial Tab**

Optional BlueChart g2 data shown.

## Tide Sub Tab

The Tide sub tab contains a graphical chart that shows tide station information in a 24-hour span starting at midnight station time. You can choose from different dates and more than 3,000 tide stations.

Enter the date for which you want to view the tide information.      Select the tide station for which you want to view the information.



The top of the page shows the tide station and date being referenced. The chart shows a 24-hour block of time, with the time progressing from left to right. The solid vertical lines represent 4-hour increments; the dotted vertical lines represent 1-hour increments.

The tide curve appears as a shaded area; higher tides are taller and lower tides are shorter. The bottom of the page indicates the times with the highest and lowest tides.

## To view a tide chart for a different tide station:

1. From the **Tide** sub tab, highlight the **At** field, and press **ENTER**. The Find menu opens showing the tide stations.
2. Press **MENU**, and select **Near Current Location**, **Near Current Route**, **Near Other** (select another location using the map), or **Near Destination**. The list is updated with your search requirements.
3. Select a tide station from the list, and press **ENTER**. The Tide Station Information Page appears.
4. Highlight **OK** and press **ENTER**. The **Tide** tab appears again showing the tide chart for the selected tide station.

## To view the tide chart for another date:

1. From the **Tide** sub tab with a chart open, highlight the **On** field, and press **ENTER**.
2. **ENTER** the date with the **ROCKER**, and press **ENTER**. You can also use the zoom **IN** and **OUT** keys to view information for another date. Press and hold **IN** or **OUT** to scroll quickly through dates.
3. Press **ENTER** when finished. The unit shows the chart for the date you entered or selected.

To use the current date again, highlight the **Date** field. Press **MENU**, highlight **Use Current Date**, and press **ENTER**.

### To view a chart's details for another time during the day (other than current time):

1. From the **Tide** sub tab with the chart you want to view, press **MENU**, and then select **Move Cursor**.
2. Press the **ROCKER** right or left to view the chart at another time.
3. To return to the current time, press **MENU**, and select **Stop Moving Cursor**.

### To automatically start pointer mode to scroll the chart:

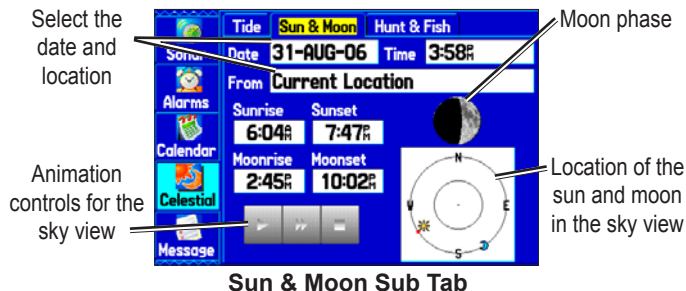
1. Use the **ROCKER** to highlight the **Date** field. Then press down to start the pointer (pan) mode.
2. Scroll the chart right to view the next day or left to view the previous day.

## Sun & Moon Sub Tab

The Sun & Moon sub tab provides you with sunrise/sunset and moon rise/set times. A graphic of the moon phase also appears. You can view Sun & Moon information for any date or location. You can also use the play, fast forward, and stop buttons to view an animation of the Sun & Moon sub tab.

### To view sun and moon information for a different date:

1. Highlight the **Date** field, and press **ENTER**.
2. Use the **ROCKER** to change the digits of the date to the date you want. You can also use the **Zoom IN** and **OUT** keys to view information for another date. Press and hold **IN** or **OUT** to scroll quickly through dates.
3. Press **ENTER** when finished. The unit shows the sun and moon information for the selected date.
4. To use the current date again, highlight the **Date** field. Press **MENU**, highlight **Use Current Date**, and press **ENTER**.



### To view sun and moon information for a different location:

1. Use the **ROCKER** to highlight the **From** field, and press **ENTER**.
2. Highlight **Use Find Menu**, and press **ENTER**. The Find menu automatically opens.
3. Select a waypoint or point of interest, and press **ENTER**.
4. On the waypoint information page, press **ENTER**. The unit shows the sun and moon information for the location you selected.

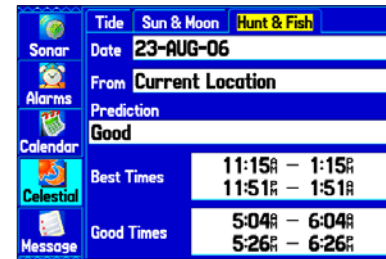
To use the current location, highlight the **From** field. Press **ENTER**, highlight **Current Location**, and press **ENTER** again.

### Hunt & Fish Sub Tab

The Hunt & Fish sub tab provides you with predictions of the best times to hunt and fish in a selected location on a specific date.

#### To display the Hunt & Fish information:

1. Highlight the **Celestial** tab on the Main Menu.
2. Use the **ROCKER** to select the **Hunt & Fish** sub tab.



Hunt & Fish Sub Tab

#### To view hunt and fish information for a different date:

1. Highlight the **Date** field, and press **ENTER**.
2. Use the **ROCKER** to change the digits of the date to the date you want. You can also use the zoom **IN** and **OUT** keys to view information for another date. Press and hold **IN** or **OUT** to scroll quickly through dates.
3. Press **ENTER** when finished. The unit shows the information for the date you entered.

To use the current date again, highlight the **Date** field. Press **MENU**, highlight **Use Current Date**, and press **ENTER**.

### To view hunt and fish information for a different location:

1. Highlight the **From** field, and press **ENTER**.
2. Highlight **Use Find Menu**, and press **ENTER**. The Find menu opens.
3. Select a point, and press **ENTER**.
4. On the information page, press **ENTER**. The unit shows Hunt & Fish information for the selected location.

### To use the current location:

1. Highlight the **From** field, and press **ENTER**.
2. Highlight **Current Location**, and press **ENTER**.

## Message Tab

The Message tab shows a list of messages generated by the GPSMAP 278. Use the **ROCKER** to scroll through the list of messages on the Log sub tab. Use the Log Filter sub tab to show only the message types that you want to view.

Message	Date
Approaching Waypoint	21-AUG-06 10:50:41
Lost Satellite Reception	21-AUG-06 8:33:27
Lost Satellite Reception	21-AUG-06 8:30:14
Approaching Waypoint	21-AUG-06 8:04:55
Approaching Waypoint	21-AUG-06 8:04:42
Approaching Waypoint	21-AUG-06 8:04:18

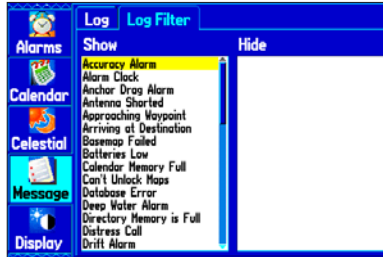
Main Menu—Message Tab

### To view messages:

1. Highlight the **Message** tab on the Main Menu.
2. Use the **ROCKER** to highlight a message.
3. Press **ENTER** to view detailed information about the message.

### To show or hide messages using the log filter:

1. Highlight the **Message** tab on the Main Menu.
2. Highlight the **Log Filter** sub tab. All messages appear by default.



Message Log Filter Tab

3. Highlight the message type you want to hide, and press **ENTER**. The message name appears in the **Hide** window.
4. Highlight the message, and press **ENTER** to show it again.

## Display Tab

Use the Display tab to set display features, such as pages to show in the main page sequence and how long the backlight stays on.



Main Menu—Display Tab

**Main Menu**—indicates whether the Main Menu tabs to contain text and icons (default) or text tabs only.

**Color Mode**—sets the display to **Day**, **Night**, or **Auto** color mode. Select **Auto** to automatically switch from day to night at sunset and change back at sunrise.

**Backlight Timeout**—sets the backlight to stay on when it is turned on, or to time out after a selected period of time has elapsed when using the battery. The backlight stays on regardless of this setting when external power is used.

**Twilight Adjustment**—allows the unit to adjust the backlight for optimum viewing during twilight times.

**Highway Page**—indicates whether the Highway Page appears in the main page sequence.

**Compass Page**—indicates whether the Compass Page appears in the main page sequence.

**Backlight Intensity**—turns the backlight up or down. Press right on the **ROCKER** to increase the intensity or left to decrease.

## Sound Tab

Use the Sound tab to customize the sounds made by your GPSMAP 278.



Main Menu—Sound Tab

**Beeper**—set the beeper to chime during key presses and alarms (**Key and Alarm**) or on **Alarms Only**.

**Attention Tone**—turn the attention tone on or off that sounds before the vocal prompts.

**Voice Prompt**—set the vocal prompt to operate for **Guidance and Status, Route Guidance Only, or No Voice Prompts**.

**Voice Language**—set the language for vocal prompts.

**Speaker Volume**—set the external speaker volume.

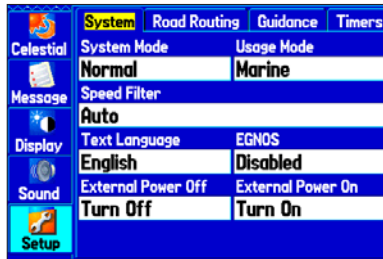


## Setup Tab

To customize how your GPSMAP 278 looks, use the System tab to adjust certain system settings.

### System Sub Tab

Use the System sub tab to control settings for system mode, speed filter, language, and external power.



Main Menu—System Setup Tab

**System Mode**—sets the unit to operate in **Normal** mode, **Battery Saver** mode, or **Simulator** mode (for practice ONLY).

**Usage Mode**—sets the unit to operate in **Marine** (default) or **Automotive** Mode.

**Speed Filter**—allows the unit to average speed readings. Choose from **Off**, **Auto** (automatically controls filtering), or **On** (allows you to enter a value in seconds).

*GPSMAP 278 Owner's Manual*

**Text Language**—sets the unit's on-screen language.

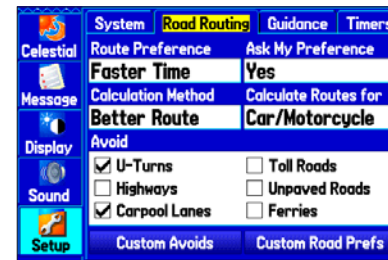
**EGNOS**—allows you to enable or disable EGNOS.

**External Power Off**—indicates whether the GPSMAP 278 remains on (**Stay On**) or the unit turns off (**Turn Off**) when external power is removed from the unit.

**External Power On**—indicates whether to turn on the GPSMAP 278 (**Turn On**) or charge the battery (**Charge Battery**) when external power is applied to the unit.

### Road Routing Sub Tab

Use the Road Routing sub tab to select road routing settings.



Road Routing Sub Tab

**Route Preference**—allows the unit to calculate routes based on:

- **Faster Time**—routes calculated are faster to drive but might be longer in distance.
- **Shorter Distance**—routes calculated are shorter in distance but might take more time to drive.
- **Off Road**—creates a direct line from your current location to your destination. This is useful when traveling outside of the detailed map coverage area or where no roads exist.

**Ask My Preference**—determines whether you are asked to select a Route Preference before route calculations.

**Calculation Method**—sets how the unit searches for the route.

- **Quickest Calculation**—calculates the route the quickest, but it might not produce the best route.
- **Quick Calculation**—takes a bit more time to calculate but generates a better quality route.
- **Better Route**—generates an even better quality route but uses a longer calculation time.
- **Best Route**—generates the most optimal route but takes the longest time to calculate.

**Calculate Routes for**—sets route calculation for the particular vehicle you are operating to optimize the route for your vehicle type, because some roads have vehicle-based restrictions.

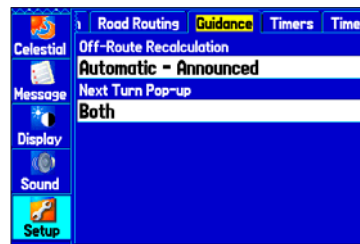
**Avoid**—allows you to avoid certain road types and maneuvers on your route. The unit uses these road types only if alternative routes take you too far out of your way or if no other road is available.

**Custom Avoids**—allows you to enter specific areas and roads that you would like to avoid in your navigation. See page 61 for information on creating custom avoids.

**Custom Road Prefs**—allows you to avoid or use **Major**, **Medium**, and **Minor** roads using a slider scale. This is useful if you want to avoid major highways, for example. Select **Reset** to use preset values.

## Guidance Sub Tab

Use the Guidance sub tab to set guidance information.



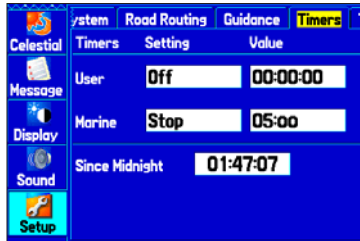
Guidance Sub Tab

**Off-Route Recalculation**—allows you to set whether the unit prompts you when it is recalculating your route (**Prompted**), or recalculates automatically. Set whether the unit announces the recalculation (**Automatic - Announced**) or recalculates silently (**Automatic - Silent**). You can turn the off-route recalculation **Off**.

**Next Turn Pop-up**—turns the Next Turn pop-up window **Off**, or opens the window when you press NAV (**Held NAV Key Only**), opens automatically (**Automatically Only**), or **Both**.

### Timers Sub Tab

Use the Timers sub tab to set timers and view information about how long the unit has been on.



Timers Sub Tab

**User**—allows you to set the timer to **Count Up** or **Count Down**. You can also **Reset** the timer and turn it **Off**. Enter a time to use when counting up or down.

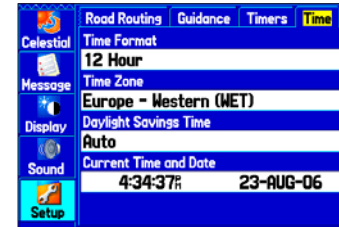
*GPSMAP 278 Owner's Manual*

**Marine**—appears on the Compass Page in Marine Mode.

**Since Midnight**—shows the time the unit was turned on since midnight. To reset, select All Unit Defaults on the System sub tab.

### Time Sub Tab

Use the Time sub tab to set the time format and zone, and set the unit to conform to Daylight Saving Time. The current time and date appear in the Current Time and Date field.



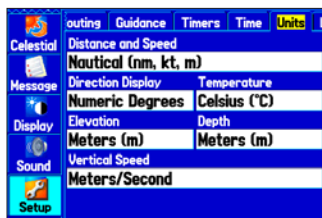
Time Sub Tab

**Time Zone**—choose the time zone for your location so the GPSMAP 278 shows the correct local time. Select **Other** to enter a UTC Offset.

If the wrong date appears, press **MENU**, highlight **Set Date**, and press **ENTER**. You are prompted to enter the current year. The GPSMAP 278 uses this information when gathering satellite data to show the correct date.

## Units Sub Tab

Use the Units sub tab to customize measurement units.



Units Sub Tab

**Distance and Speed**—select the unit of measure to show your speed and distance traveled.

**Direction Display**—select the unit of measure to show your direction. Mils is a unit of angle measurement used in military settings, in which 17.78 mils equal one degree.

**Temperature**—select the unit of measure to show the temperature.

**Elevation**—select the unit of measure to show your altitude.

**Depth**—select the unit of measure to show the depth.

## Location Sub Tab

Use the Location sub tab to change location setting information.

See the “Appendix” for more information about location formats and map datums. Also visit the National Imagery and Mapping Agency at [www.nima.mil](http://www.nima.mil) for more information on grids and datums.

### Changing the Location Format

When you change the **Location Format**, you change the coordinate system in which a given location reading appears. The default format is latitude and longitude in degrees, minutes, and thousandths of a minute (hddd°mm.mmm). Only change the location format if you are using a map or chart that specifies a different location format or want to use a format you are familiar with.

### Selecting a Different Map Datum

Datums are used to describe geographic positions for surveying, mapping, and navigation and are not actual maps built in the unit. Only change the datum if you are using a map or chart that specifies a different datum.

The default setting is WGS 84. The unit automatically selects the best datum depending on your chosen location format.



**WARNING:** Selecting the wrong map datum can result in substantial position errors. When in doubt, use the default WGS 84 datum for best overall performance.

### Selecting a Different Heading Reference

You can select from **Auto Mag Var**, **True**, **Grid**, and **User Mag Var**. **Auto Mag Var** provides magnetic north heading references that are automatically determined from your current location.

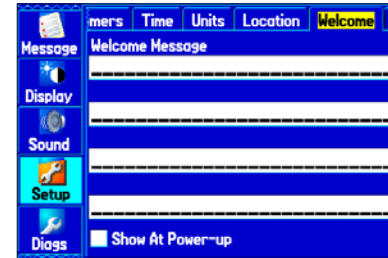
**True** provides headings based on a true north reference. **Grid** provides headings based on a grid north reference (and is used in conjunction with the grid position formats). **User Mag Var** allows you to specify the magnetic variation at your current location and provides magnetic north heading references based on the variation you enter. Enter the magnetic variation of your current location in the **Magnetic Variation** field if you selected **User Mag Var** for the heading.



**WARNING:** If **User Mag Var** is selected, the unit does not automatically calculate and update the magnetic variation at your present location. You must update the magnetic variation as your location changes. Failure to update this setting can result in substantial differences between the information shown on your unit and external references, such as a magnetic compass.

### Welcome Sub Tab

Use the Welcome sub tab to enter information, such as your name and address, or a welcome message that appears when you turn on your GPSMAP 278.



Welcome Sub Tab

#### To add a welcome message:

1. Press up or down on the **ROCKER** to highlight one of the Welcome Message fields, and press **ENTER**.
2. Use the **ROCKER** to enter information in the fields. You do not need to enter information in every field. When finished, press **ENTER** again.

- To display the welcome message when you turn on your GPSMAP 278, highlight the **Show at Power-up** check box, and press **ENTER** to select it. To hide the welcome information at start-up, clear the check mark.

### COM 1 and COM 2 Sub Tabs

Use the COM 1 and COM 2 sub tab to change the data format and control the input/output format used when connecting your unit to external devices.



COM 1 Sub Tab

**Serial Data Format**—sets the data format to one of the following:

- Garmin Data Transfer**—provides the proprietary format used to exchange data with a computer or another Garmin unit. Garmin Data Transfer is disabled when the USB is connected, and the unit automatically switches to USB format. When the USB is disconnected, the USB field changes to Transfer Mode.
- GARMIN DGPS**—connects the GPSMAP 278 with a Garmin DGPS beacon receiver.
- Garmin Remote Sonar**—connects the GPSMAP 278 with a GSD 21 or GSD 20 Sounder Module and transducer.
- NMEA In/NMEA Out**—supports the input/output of standard NMEA 0183 version 3.01 data and sonar NMEA input support for the DBT, DSE, DPT, MTW, and VHW sentences.
- RTCM In**—allows DGPS input using a standard RTCM format.
- RTCM In/NMEA Out**—allows DGPS input using a standard RTCM format and also provides NMEA 0183 version 3.01 output.
- RTCM In/Text Out**—allows Differential GPS (DGPS) input using a standard RTCM format and also outputs simple text data that includes data, time, location, and velocity.

- **Text Out**—allows the unit to output simple text data that includes data, time, location, and velocity. The Baud can be set to 1200, 2400, 4800, or 9600.
- **None**—provides no interfacing capabilities.

If you select **GARMIN DGPS** or **RTCM In/NMEA Out** format, you can control a differential beacon receiver directly from your GPSMAP 278 using the COM 1 or COM 2 sub tab. You can have the unit automatically scan for the DGPS beacon signal, or you can enter the beacon frequency and bit rate on the unit, and the information will be used to tune the beacon receiver. If you use a DGPS receiver, WAAS capability is automatically turned off.

**To have the unit automatically scan for a frequency:**

1. Set the unit to **GARMIN DGPS** or **RTCM In/NMEA Out**.
2. Highlight the **Beacon** field, and press **ENTER**.
3. Highlight **Scan**, and press **ENTER**. The numbers in the **Frequency** field change as the unit scans from 284 kHz to 325 kHz, 200 bit rate, then 100, at 6-second intervals.



**COM 1 Sub Tab with Garmin DGPS Selected**

The Status field shows one of the following:

- **Tuning**—the unit is attempting to tune to the specified frequency and bit rate.
- **Scanning**—the unit is automatically scanning through the frequencies and bit rates.
- **Receiving**—the unit is receiving DGPS signal and ready for operation.
- **Check Wiring**—the unit is not making connection with DGPS receiver.

**To restart the scan:**

1. Press **MENU**.
2. Highlight **Restart Scan**, and press **ENTER**.

**To manually enter a frequency and bit rate:**

1. With the unit set to **Garmin DGPS** or **RTCM In/NMEA Out**, highlight the **Beacon** field, and press **ENTER**.
2. Highlight **User**, and press **ENTER**.
3. Highlight the **Frequency** or **Bit Rate** field, and press **ENTER**
4. Enter a frequency or bit rate. Press **ENTER** when finished

When the unit is receiving a DGPS signal, the Signal to Noise Ratio (SNR) and Distance fields show data. The SNR range is 0 dB to 30 dB, with 30 being the best. The Distance field may or may not show data, depending on the signal being broadcast from the DGPS site.

The DGPS beacon transmitters are operated by the United States Coast Guard (or similar government agency in other countries), which is responsible for their accuracy and maintenance. For DGPS transmitter problems or to find the most updated list of frequencies and coverage areas, contact your local USCG or see their Web site at [www.navcen.uscg.mil/](http://www.navcen.uscg.mil/).

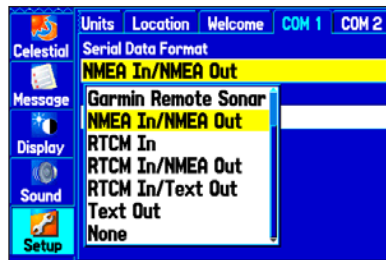
**Advanced NMEA Output Setup**

If you are going to interface the GPSMAP 278 with another piece of equipment (such as a radar or autopilot), you must set the unit to output NMEA data. The NMEA data transmission can be customized to keep the output rate at two seconds. If too many NMEA sentences are activated, the unit may take longer than two seconds to update.

You can also set the Output Rate to Fast to output a minimum number of NMEA sentences at one-second intervals.

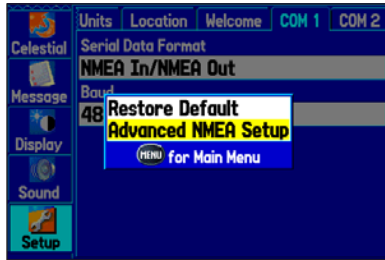
**To access the Advanced NMEA Output Setup:**

1. Highlight the **Setup** tab on the Main Menu.
2. Select the **COM 1** or **COM 2** sub tab.
3. Highlight the **Serial Data Format** field, and press **ENTER**.
4. Select **NMEA In/NMEA Out**, and press **ENTER**.

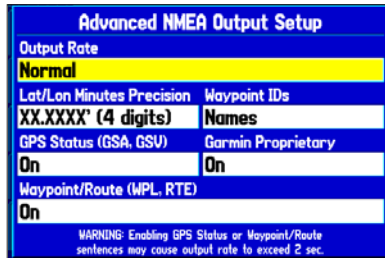




5. Press **MENU** to open the options menu.



6. Select **Advanced NMEA Setup**, and press **ENTER**.



**Advanced NMEA Output Setup**

Use the Advanced NMEA Output Setup Page to set the output rate, change the precision of the Lat/Lon minutes, set Waypoint IDs to names or numbers, and turn on and off the GPS status, the Garmin Proprietary sentences, and Waypoint/Route (WPL, RTE).

GPSMAP 278 NMEA Sentence Output (NMEA version 3.01 compliant):

- Always transmitted: GPRMC, GPGGA, GPGLL, GPBWC, GPVTG, GPXTE, GPRMB
- Switchable sentences: GPGSA, GPGSV, GPWPL, GPRTE
- Garmin proprietary: PGRME, PGRMZ, PGRMM

## SETTING UP AND USING SONAR

This section covers the additional sonar options for the GPSMAP 278 when used in conjunction with a GSD 21 or GSD 20 Sounder Module. Read the *GSD 21 or GSD 20 Sounder Module Installation Instructions* to properly install the sounder module. When you turn on your GPSMAP 278, the Sounder Module automatically turns on.



**NOTE:** You **MUST** have a GSD 21 or GSD 20 installed and connected to your GPSMAP 278 to use the sonar features.

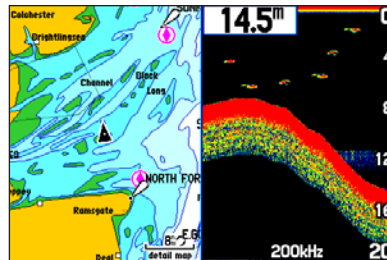
The Sonar Page is added to the end of the page sequence when you are in Marine Mode. To view the Sonar Page, press **PAGE** or **QUIT** repeatedly until it appears.

### Showing Sonar on the Map Page

You can change the layout of the Map Page to show a split screen to show the sonar on the Map Page. You must be in Marine Mode to use sonar.

#### To show the Sonar Page on the Map Page:

1. On the Map Page, press **MENU**.
2. Highlight **Set Up Page Layout**, and press **ENTER**.
3. Highlight **Map with Sonar**, and press **ENTER**.



Map Page with Split Screen

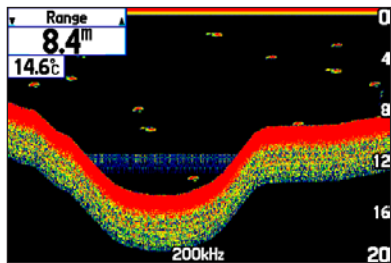
#### To resize the Map Page sonar split screen:

1. After showing the Sonar and Map pages together in the split screen as described in the previous steps, press **MENU**.
2. Highlight **Size Split**, and press **ENTER**.
3. Use the **ROCKER** to move the vertical double-arrow right or left.
4. Press **ENTER**.
5. To stop resizing the screen, press **QUIT**. You can also press **MENU**, highlight **Stop Resizing**, and press **ENTER** to stop resizing the screen and retain the previous split setting.

## Using the Sonar Page

When combined with a GSD 21 or GSD 20 Sounder Module, your GPSMAP 278 becomes a powerful fishfinder/flasher with the Sonar Page. If a GSD 21 or GSD 20 is attached, but the unit does not detect a transducer, a “Sonar Turned Off” message appears across the Sonar Page. The Sonar Page appears only if a GSD 21 or GSD 20 has ever been attached or when the unit is in Simulator Mode.

The middle of the page contains a right-to-left moving sonar image of the water beneath your boat. Items appear as they pass under your transducer. Those items on the right side of the screen are closer to you than those on the left. Along the right side of the screen is an adjustable scale that reflects the depth of the area being shown. The top-left corner shows the adjustment option, the depth, and the water temperature.



Sonar Page

The sonar returns show as red (strongest), then orange (strong), yellow (medium), green (weaker), and blue (weakest). The **Fish Symbols** option allows you to view the actual sonar data, a fish symbol or a combination of both. When the unit is set to **Dual**, the appearance of the fish symbols changes. Fish symbols from the center of the beam (200 kHz) are solid (or narrow arches), but the returns from the edges of the beam (50 kHz) are hollow (or wide arches).

The sonar display can also be set to show a split screen view of a zoomed portion of the sonar, bottom lock (display scaled from the bottom up), or a combination of these options. For example, you can choose to show dual frequency at a 2X zoom (Dual 2X) on one half and normal range dual frequency (Dual) on the other half. The current display mode appears at the bottom of each sonar display.

Read the “[Understanding Sonar](#)” section beginning on page 99 for more on information about sonar.

## Adjusting the Sonar Page

Use the Adjustment menu to access the settings and features most commonly used on the Sonar Page. Ten main adjustment options are available: Range, Zoom, View, Gain, Target Level, Whiteline, Frequency, Depth Line, Noise Reject, and Scroll. The currently selected option appears in the upper-left corner.

### To select an adjustment option:

Use one of the following methods to select an adjustment option:

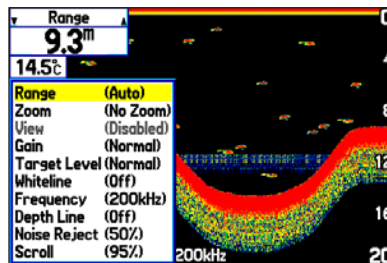
- Press the **ROCKER** right or left to scroll through the adjustment options. When the adjustment option you want appears, press **ENTER**.
- Press **MENU**, highlight **Adjustments**, and press **ENTER**. Use the **ROCKER** to highlight the adjustment and press **ENTER**.

After you select an adjustment option, press the **ROCKER** up or down to change the setting.

You can also press **MENU** and highlight a shortcut setting to quickly change to commonly used settings and values.

Press **ENTER** to accept the new setting (or press **QUIT** to cancel) and return to the Sonar Page.

## Sonar Adjustment Options



**Range**—sets the display depth range used for viewing. The unit can be set to automatically track the bottom or set to a user-specified depth range.

**Zoom**—allows you to select a display zoom scale or to split the display. When a scale other than **No Zoom** is selected, the Adjustment menu shows a new selection labeled **View** or **Span**. The Zoom function is divided into six display levels:

- **2X Split**—shows two reduced-size sonar pictures at the same time. The right half shows the complete sonar picture at its original scale. The left half shows a portion of the original picture at 1/2 depth scale.
- **2X Zoom**—shows the 2X zoomed picture on the full screen.
- **4X Split**—shows two reduced pictures, the right at the original depth scale and the left at 1/4 the original depth scale.

- **4X Zoom**—shows the 4X zoomed picture on the full screen.
- **Btm (Bottom) Split**—shows two reduced pictures, the right at the original depth scale and the left showing sonar returns from the bottom up. All target depths read as a distance from the bottom.
- **Btm (Bottom) Lock**—shows returns from the bottom up on the full screen.



**TIP:** Press the **In** and **Out** keys to quickly zoom in and out of the Sonar display.

**View/Span**—changes the viewing range of a zoomed display. If the display is 2X or 4X split, only the zoomed portion on the left side of the display is affected by the change. If the display is Bottom Split or Bottom Lock, **Span** adjusts how far off the bottom the unit shows data. This option is available when a **Zoom** scale other than **No Zoom** is selected.

**Gain**—allows you to control the sensitivity of the unit's receiver. To see more detail, increase the receiver sensitivity by selecting a higher gain. If there is too much detail or if the screen is cluttered, select a lower gain.

**Target Level**—adjusts colors used to display sonar information. A **Color Bar** appears on the right side of the screen as you adjust this setting. A higher percentage results in more strong-signaled colors

shown on the sonar display. A lower percentage results in more weaker-signaled colors shown on the sonar display. This setting does not increase or decrease the unit Gain.

**Whiteline**—controls how the unit shows information about the bottom type (hard or soft). With Whiteline Off, the bottom return shows as red. Set Whiteline at **Normal** or **1–100%** to determine bottom hardness. See page 101 for more information.

**Frequency**—allows you to choose a transducer frequency. Frequency refers to the “pitch” of the sound that the transducer sends and receives.

**Depth Line**—adds a horizontal depth line across the display that is used to measure the depth of underwater objects. The depth of the line appears in a box on the right side of the line. Press up or down on the **ROCKER** to move the line on the sonar display.

**Noise Reject**—helps filter unwanted noise from the sonar display. The Noise Reject can be turned **Off**, set to **Normal** (automatically adjusts for optimum viewing) or to a fixed **1–100%** setting. When setting the Noise Reject, remember that a higher noise rejection setting is less likely to show fish or structures.

**Scroll**—adjusts the rate that the sonar display scrolls from right to left. If you are sitting still or the sonar display is moving too fast, slow the scroll rate or pause the scrolling.


## ***Resizing the Split Screen***

You can adjust the way the split screen appears. This option is only available when a zoom scale other than **No Zoom** is selected.

### **To resize the Sonar Page split screen:**

1. From the Sonar Page split screen, press **MENU**.
2. Using the **ROCKER**, highlight **Size Split**, and press **ENTER**.
3. Move the horizontal double-arrow left or right using the **ROCKER** until the vertical width line shows, then press **ENTER**.
4. If you want to cancel this operation, press **QUIT** or press **MENU**, highlight **Stop Resizing**, and press **ENTER**.

## ***Using the Pointer on the Sonar Page***

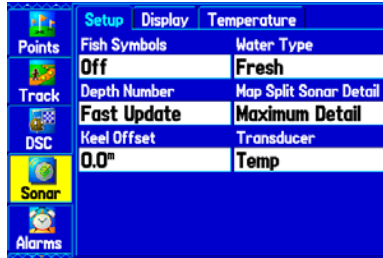
You can show the pointer (arrow)  to reference sonar items and mark underwater waypoints. This makes it easier to find and use an object such as a stump for a future fishing location. When using this feature, the Sonar Page pauses. The depth continues to update while the display is paused, but the unit does not show any new sonar data until the Sonar Page resumes scrolling. You might see a discontinuity from where the sonar information stops and where it starts again.

### **To mark an underwater waypoint:**

1. From the Sonar Page, press **MENU**, highlight **Show Pointer**, and press **ENTER**.
2. Use the **ROCKER** to move the pointer to the location you want to mark. Press **ENTER**. The New Map Waypoint Page appears.
3. To change the name, symbol or depth, highlight the appropriate field, and press **ENTER**. Make your changes and press **ENTER**.
4. When you are done making changes, highlight **OK**, and press **ENTER**.
5. To return to the standard Sonar Page, press **QUIT**; or press **MENU**, highlight **Hide Pointer**, and press **ENTER**.

## Setting Up Sonar

Use the Sonar tab on the Main Menu to set up the Sonar Page.



Main Menu—Sonar Tab

**Fish Symbols**—select how the Sonar Page shows underwater targets and background information. Select **Off** to show all of the available information about the underwater environment. Select a fish symbol, to show only the information related to that symbol.

**Water Type**—select the proper water type you are boating in. Because sound waves travel through fresh and salt water at different rates, it is necessary to select the water type to ensure accurate readings on the unit.

**Depth Number**—select how efficient the digital depth update rate is. **Fast Update** updates quicker and is recommended for low-noise water deeper than 50 feet. **Auto** is best for shallow water or high-noise areas, has a slower screen update, and is best used if you travel a wide variety of depths.

If the unit is unable to track the bottom for any reason, the digits in the depth window flash on and off to alert you that the unit is not tracking the bottom.

**Map Split Sonar Detail**—select how much detail appears on the Map Page with the sonar shown. **Full Range** shows data using the **Range** setting of the Sonar Page, regardless of **Zoom** or **Bottom Lock**. **Maximum Detail** shows any **Zoom** or **Bottom Lock** data from the Sonar Page.

**Keel Offset**—enter the surface reading for the depth of a keel. This makes it possible to measure depth from the bottom of your keel instead of from the transducer's location. Enter a positive number to offset for a keel. It is also possible to enter a negative number to compensate for a large vessel that can draw several feet of water. The **Keel Offset** is reflected in the depth reading.

**Transducer**—select the type of transducer that you are using. If you are using a speed-capable transducer/sensor, select **Temp, Spd**.

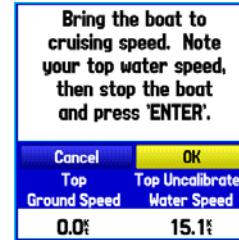
## Calibrating the Water Speed

If you select **Temp, Spd** for the **Transducer** option on the Setup sub tab, you must calibrate the water speed to ensure the **Water Speed** shown on your unit is accurate. The calibration should take place in water having little or no current.

The unit automatically uses the GPS ground speed, if it is available, for comparison on the calibration. If a GPS ground speed is not available, use either your boat's speedometer reading (not always accurate) or a stopwatch to determine your speed over a certain distance. To find out your speed, divide the distance by the time.

### To calibrate the water speed:

1. On the **Setup** sub tab, highlight the **Calibrate Water Speed** button and press **ENTER**.
2. Bring the boat to a cruising speed. Both the top ground and uncalibrated water speeds are shown at the bottom of the calibration window. Note your top speed, then stop the boat, and press **ENTER**.



Calibrating the Water Speed

3. By default, the top ground speed is automatically shown. If a ground speed is not available, the top uncalibrated water speed is used instead. If the new speed is correct, highlight **OK**, and press **ENTER**.

If you want to manually enter a calibration, press **ENTER** while the speed is highlighted, enter a new speed, and press **ENTER** again.

If the boat is not moving fast enough or the speed sensor is not outputting a speed, "Boat Is Not Moving Fast Enough To Calibrate" appears at the bottom of the screen. Check that the speed sensor wheel is moving or safely increase boat speed. If there is a problem with the speed sensor or if a speed sensor is not installed, "Water Speed Sensor Is Not Working" appears at the bottom of the screen. Check connections of speed sensor cables.



## Setting Up the Sonar Display

You can set up how the sonar information appears on-screen using the **Display** sub tab.



Display Sub Tab

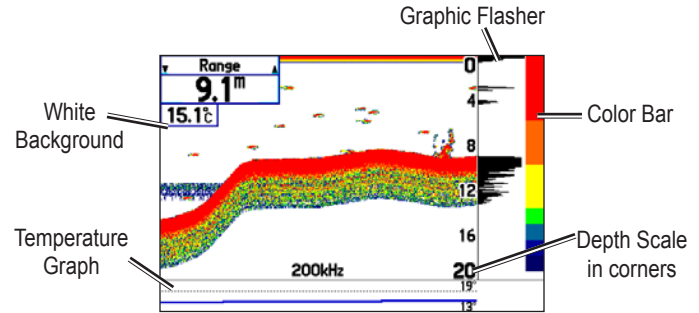
**Scale**—select how and where you want the depth scale to appear.

**Color Bar**—select **On** to show a gradient scale of the current Target Level setting on the Sonar Setup tab.

**Flasher**—select **On** to show a graphic Flasher representation on the far right side of the sonar display. This graphic Flasher shows structure and bottom returns much the same as a true Flasher. You might find this feature useful when using Fish Symbols.

**Temperature Graph**—select **On** to show a temperature graph along the bottom of the Sonar Page.

**Background Color**—select the color for the Sonar Page and the sonar on the Map Split Page.



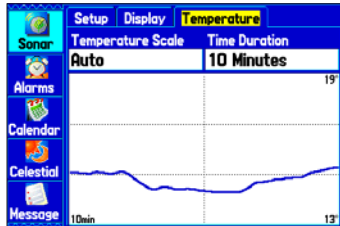
Sonar Page with the Sonar Display Settings Changed

## Viewing the Temperature

Use the Temperature sub tab to view a graph of water temperature changes over a period of time. The graph reads from right to left so that the most recent temperature measured appears on the far right side of the graph. The dotted lines within the graph indicate intervals in the temperature scale and the duration of time. To view temperature information, you must select **Temp** as the Transducer type on the Setup sub tab.



**NOTE:** You must be receiving proper sonar data from another device, such as a Garmin GSD 20 or GSD 21 Sounder Module, to view temperature information.



Temperature Sub Tab

## Changing the Temperature Display

The graph will adjust and show the temperatures changes according to the **Temperature Scale** and **Time Duration** settings.

**Temperature Scale**—select a degree span from the list. Select **Auto** to have the unit automatically determine the best range, or select a span of 2, 4, 6, 8, or 10 degrees.

**Time Duration**—set how fast or slow the temperature log scrolls; a shorter time duration means a faster temperature log scroll. Select a duration from 1 minute to 2.5 hours.

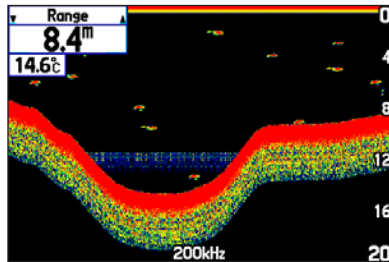
## Resetting the Temperature Graph

To reset the scale range for the temperature graph, press **MENU**, highlight **Reset Auto Scale**, and press **ENTER**. This is useful when the scale spans a large range due to extreme temperature changes. You can reset the scale only when you select **Auto** for the **Temperature Scale**.

To restore the temperature graph to defaults, press **MENU**, highlight **Restore Default**, and press **ENTER**.

## Understanding Sonar

The transducer mounted on your vessel transmits sound waves toward the bottom of the water in a cone-shaped pattern. When a transmitted sound wave strikes an underwater object—such as the bottom, a structure, or a fish—sound is reflected back to the transducer. The transducer collects the reflected sound waves and sends the data to the GSD 21 or GSD 20 Sounder Modules and then to the GPSMAP 278 to be processed and shown. The underwater data is shown on the Sonar display in the order that it is returned; first returned is the first on the display.



**Sonar Page**

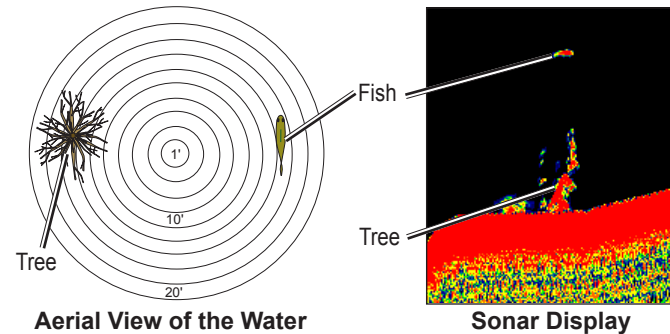
Generally speaking, if the only thing between the transducer and the bottom is water, the first strong return comes from the bottom directly below the transducer and sets the bottom level. Weaker secondary returns provide the detailed data. Stronger returns appear in darker colors, with red being the strongest return.

*GPSMAP 278 Owner's Manual*

## Understanding the Sonar Display

One of the first things to understand about sonar is that the transducer sends a beam down to the bottom of the water, much like the beam of a flashlight. The beam starts small near your vessel and expands as it gets to the bottom. See “[Transducer Coverage](#)” for more detailed information.

The Sonar Page does not show a three-dimensional representation of the underwater environment; the display is in two-dimensions, much like if you took a picture of an aquarium. Only the depth of the item in the water appears. The Sonar display does not show you where an item is located horizontally in the water, as shown in the drawings below. The fish is not directly above the tree in reality, but it might look like it is on the Sonar Page.

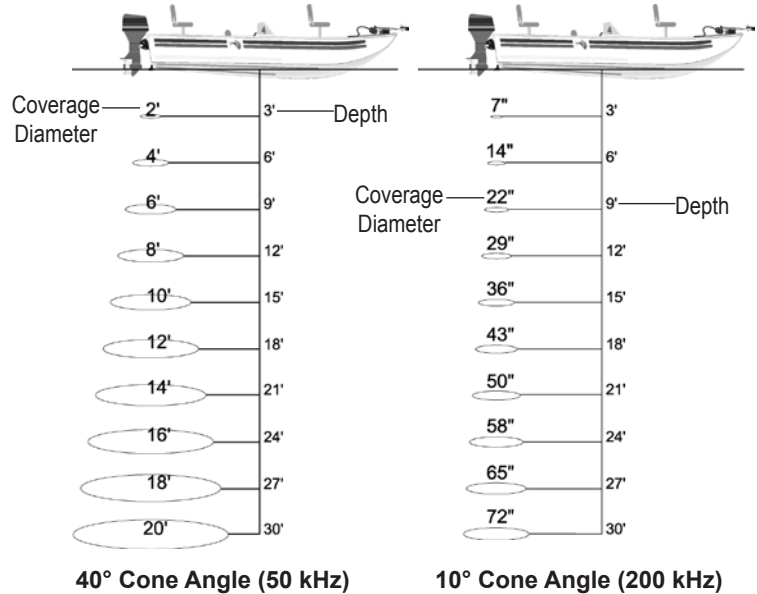


### Transducer Coverage

The area covered by the transmitted sound waves is determined by the cone angle of the transducer and the water depth. The wide cone angles (40°) associated with low frequencies (50 kHz) provide a large coverage area for finding fish within a coverage width that is approximately 2/3 of the water depth. However, this also means that wide cone angles produce less bottom detail and resolution. As shown in the drawing on the near right, the 40° cone angle produces a coverage area of approximately a 20-foot diameter circle at a 30-foot depth.

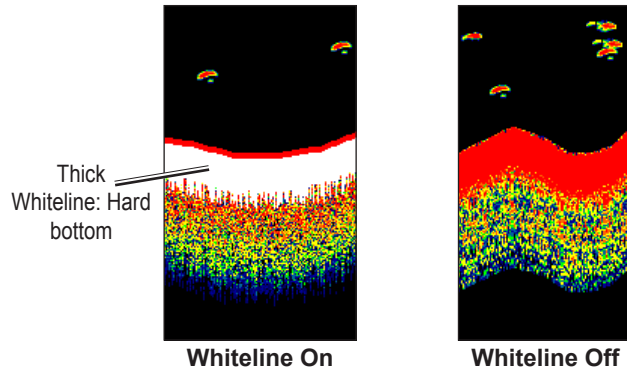
The narrow cone angles (10°) associated with high frequencies (200 kHz) provide better bottom resolution and crisper detail, but cannot show a large coverage area for finding fish. The 10° cone angle provides a coverage width that is approximately 2/10 of the water depth. As shown in the drawing on the far right, the 10° cone angle produces a coverage area of approximately a 6-foot diameter circle at a 30-foot depth.

Dual frequency mode combines both frequencies to get the best coverage area and contour/depth readings.



## Whiteline

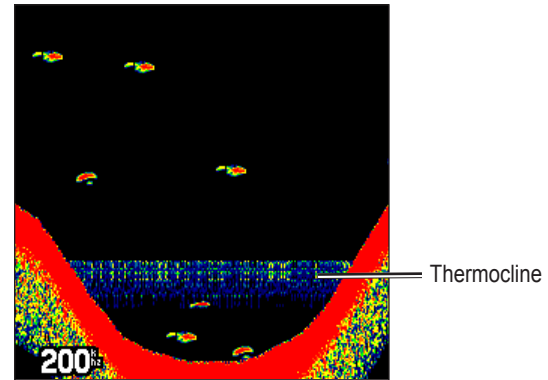
The GSD 20 or GSD 21 can help you determine whether the bottom is hard or soft. When the sonar sound waves are reflected back by the bottom, a hard bottom returns a stronger signal than a soft bottom. A thin whiteline indicates a softer bottom, while a thick whiteline indicates a harder bottom. Normally, a red line is used to show the point where water meets the bottom. This line follows the bottom contour, along with any significant objects lying on the bottom. The unit uses the whiteline function to make the bottom layer information easier to distinguish.



## Thermoclines

A rough definition of a thermocline is a break in water where the water temperature changes faster than the water above it. Thermoclines are shown as the weakest colors.

One of the unique features offered by Garmin is See-Thru® technology, which allows the GPSMAP 278 to hear both weak and strong signals simultaneously so it can identify fish returns under the toughest conditions, such as suspended in thermoclines or even hiding near structures. See-Thru technology allows the GSD 21 or GSD 20 Sounder Modules to “see” through thermoclines and helps locate fish where they live.



## APPENDIX

### Specifications

#### Physical Specifications

<b>Size:</b>	5.7" W x 3.2" H x 1.9" D (14.5 x 8.1 x 4.8 cm)
<b>Weight:</b>	14.0 oz (0.40 kg)
<b>Display:</b>	3.75" diagonal (9.5 cm) Transflective, 256-color display with backlighting (480 x 320 pixels)
<b>Case:</b>	Fully gasketed, high-impact plastic alloy, waterproof to IEC 60529 IPX7
<b>Temp. Range:</b>	5°F to 140°F (-15°C to 60°C)

#### Power

<b>Battery:</b>	Rechargeable lithium-ion
<b>Battery Life:</b>	7-15 hours
<b>Source:</b>	11–35 VDC
<b>Fuse:</b>	3AG - 1.5 Amp

#### Performance

<b>Receiver:</b>	Differential-ready 12 parallel channel receiver
<b>Acquisition Times:</b>	Approximately 15 seconds (warm start) Approximately 45 seconds (cold start) Approximately 5 minutes (First Time/ AutoLocate™)
<b>Update Rate:</b>	1/second, continuous
<b>Accuracy</b>	
<b>GPS:</b>	15 meters (49 feet) RMS 95% typical
<b>DGPS (USCG):</b>	3–5 meters (10–16 ft), 95% typical
<b>DGPS (WAAS):</b>	< 3 meters (10 ft) 95% typical with DGPS corrections
<b>Velocity:</b>	0.1 knot RMS steady state
<b>Dynamics:</b>	6 g's

## Optional Accessories

In addition to the standard accessories included with your GPSMAP 278, several optional accessories are available to enhance the operation of the GPSMAP 278.

To obtain replacement parts and optional accessories, contact your Garmin Dealer, Garmin Product Support at 800/800.1020, or Garmin Europe at 44/0870.8501241.




---

**WARNING:** Garmin accessories have been designed and specifically tested for use with Garmin products. Accessories offered by other manufacturers have not been tested or approved for use with Garmin products. Use of such accessories could cause damage to the GPSMAP 278 and void the warranty.

---

**GA 29, GA 29F, and GA 26C Antennas:** Garmin remote antennas.

**Non-Skid Friction Mount:** Portable vehicle mount, no installation required.

**Permanent and Temporary Adhesive Disks:** Adhesive disks for using the unit in a vehicle.

**PC Interface Cable:** Connects the unit to a serial port on your PC.

**Power/Data Cable:** Allows you to connect the unit to the electrical system using bare wires.

**Programmable Data Cards:** Blank data cards available in 16 MB, 32 MB, 64 MB, 128 MB, 256 MB, and 512 MB sizes. Download detailed map data from MapSource CD-ROMs to a data card, either directly through your GPSMAP 278 using the PC USB cable, the optional PC Interface cable, or with the optional USB Data Card Programmer.

**USB Data Card Programmer:** Programs blank data cards at high speed through a PC.

**Carrying Case:** Protects the GPSMAP 278 when not in use; has storage space for data cards.

**Protective Cover:** Snaps on the front of the unit to protect the screen from damage.

**MapSource Software CD-ROMs:** enhances the basemap and creates waypoints and routes from your computer. MapSource offers several detailed mapping options that are compatible with the GPSMAP 278. See [www.garmin.com](http://www.garmin.com) for more information

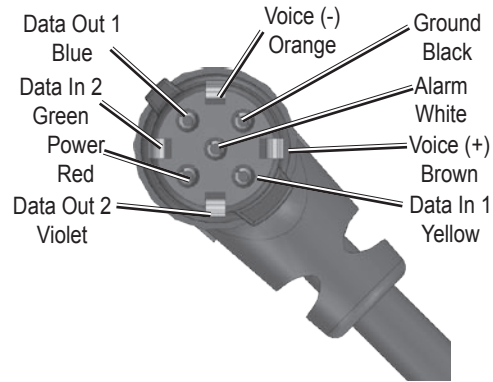
**Pre-Programmed Data Cards:** Data cards preprogrammed with BlueChart g2 or US Inland Lakes map data.

## Installation Information

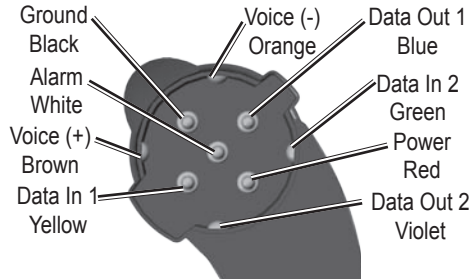
This section of the Appendix provides information on connecting the GPSMAP 278 to auxiliary devices and removing the antenna.

### Connecting the Power/Data Cable

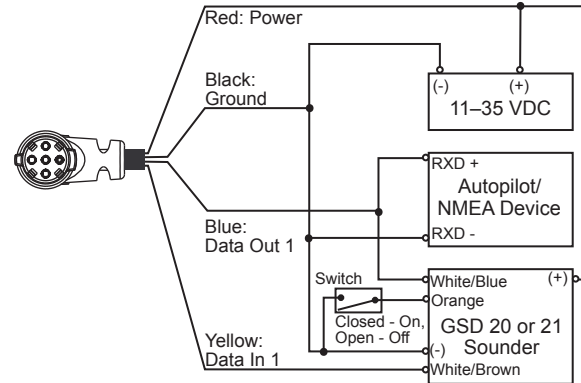
The power/data cable connects the GPSMAP 278 to an 11–35 VDC system and provides interface capabilities for connecting external devices. The color code in the diagram below and to the right indicates the appropriate harness connections. Replacement fuse is a 3AG - 1.5 Amp fuse.



**Power/Data Connector on the Cable**



**Power/Data Connector on the GPSMAP 278 Unit**





## Connecting Your GPSMAP 278 to a Computer

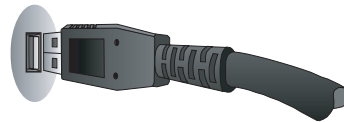
You can connect your GPSMAP 278 to your computer using the supplied USB cable to connect to a USB data port or the PC Interface cable to connect to a DB-9 serial communications port.



**NOTE:** Fully install the supplied MapSource program, Trip & Waypoint Manager, on your computer before connecting the USB cable to the computer.



USB connector  
under weather  
cap



**USB Data Port on Your PC**



**Serial Communications Port**

## To connect your GPS to your computer:

1. Connect the small end of your cable to the lower connector on the back of the GPSMAP 278, shown in the illustration to the left.
2. When using the supplied USB Data Cable, connect the larger end of the cable to an available USB data port (see the illustration on the left).

When using a PC Interface Cable, connect the larger end of the cable to a serial communications port on your computer (see illustration on the bottom left).

## Information About USB Drivers

The USB drivers should have been automatically installed when you installed the MapSource program that came with your GPSMAP 278. The first time you connect the GPSMAP 278 to a USB port, your computer might prompt you to locate the destination of the drivers for the device. You only need to install the drivers once. After the drivers are installed, your computer will always detect your GPSMAP 278 when it is connected. USB drivers might be updated periodically. You can find these updates at [www.garmin.com](http://www.garmin.com).

### ***Using xImage for Customized Waypoint Icons***

Use xImage to exchange images between your computer and your GPSMAP 278. You can download and save screenshots of any screen shown on your unit. xImage also allows you to download customizable splash screens and waypoint symbols from compatible GPS units, customize them (if you have an image editing program on your computer), and send them back to your GPS unit.

You can download xImage from the Garmin Web site at [www.garmin.com/ximage/](http://www.garmin.com/ximage/). See the Help file for complete instructions about using xImage.

### ***Custom POIs (Points of Interest)***

Your GPSMAP 278 accepts custom POI databases, available from various companies on the Internet. Some custom POI databases contain alert information for points such as safety cameras and school zones. Your GPSMAP 278 can notify you when you approach one of these points.

After downloading your POI database, use the Garmin POI loader to install the POIs to your unit. The POI Loader is available at [www.garmin.com/extras](http://www.garmin.com/extras).



---

**CAUTION:** Garmin is not responsible for the consequences of using a custom POI database or the accuracy of third-party data.

---

## Installing and Removing Data Cards

You can use optional Garmin data cards in your GPSMAP 278 to show digital charts and maps. Install the data card in the card slot located on the bottom of the unit. Install or remove the data card at any time, whether the unit is on or off.

You can load a variety of information on your data card, such as MapSource detailed maps. You can also buy pre-programmed cards to use with your GPSMAP 278.



---

**NOTE:** Data cards are not waterproof, should not be exposed to moisture or excessive static charges, and should be stored in the case supplied with the card.

---

### To install a data card:

1. Insert the card into the slot on the bottom of the unit. Be sure the label is facing the front of the unit.
2. Firmly push the card into the unit. It is not necessary to force the card. The handle is still exposed when it is properly inserted.
3. If the unit is on, a confirmation tone sounds. The first time you insert a programmed data card, the unit takes a few seconds to read the card. Once the data card has been properly installed and accepted, a summary screen noting the card details appears. Press **ENTER** to acknowledge.

If you insert a data card and get a card format not recognized message, try removing the card and reinserting it. If the card is still not recognized, contact Garmin or your Garmin dealer.

### To remove a data card:

1. Grasp the card handle. The handle expands for easy removal.
2. Pull the card out of the card slot on the bottom of the unit.
3. If the unit is on, a confirmation tone sounds when the data card has been removed.

## Interfacing

The following formats are supported for connection of external devices: GARMIN proprietary Differential GPS (DGPS), NMEA 0180, 0182, 0183 (versions 1.5, 2.0, 2.3, 3.01), ASCII Text Output, and RTCM SC-104 input (version 2.0).

The following are the Approved Sentences for NMEA 0183, version 3.01 output: GPRMC, GPGGA, GPGSA, GPGSV, GPGLL, GPBOD, GPRTE, and GPWPL. The following are the Proprietary Sentences for NMEA 0183, version 3.01 output: PGRME, PGRMZ, and PGRMM.

The GPSMAP 278 also includes NMEA input with support for the BWC, DBT, DPT, DSC, DSE, MTW, VHW, VTG, and XTE sentences.

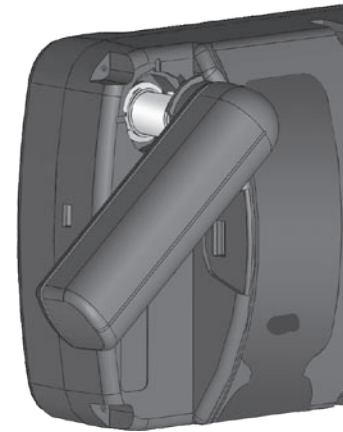
Garmin's proprietary communication protocol is available from the Web site ([www.garmin.com](http://www.garmin.com)).

## Removing the GPS Antenna

You can remove the GPS antenna to use an external antenna. After the antenna is removed, the BNC connector is exposed and ready for use with an external antenna. For information on connecting an external antenna to the GPSMAP 278, refer to the installation instructions that came with the antenna.

### To remove the GPS antenna:

1. Remove the external power cable from the connector on the back of the GPSMAP 278.
2. Rotate the antenna to approximately a seven o'clock position. The alignment notches in the casing must line up with the notches on the antenna.
3. Pull the antenna away from the GPSMAP 278 unit.



**Removing the GPS Antenna**

## What is EGNOS/WAAS/MSAS?

The European Geostationary Navigation Overlay System (EGNOS) is European Space Agency developed service to improve the overall integrity of the GPS signal and increase position accuracy for users in Europe. In North America, EGNOS is referred to as WAAS.

The system is made up of satellites and network of ground reference stations positioned across Europe that monitor GPS satellite data.

All SBAS systems use the same receiver frequency; therefore any operational SBAS system should be capable of providing your GPS unit with increased accuracy at any location in the world.

Currently, enabling EGNOS/WAAS on your Garmin GPSMAP 278 in regions that are not supported by ground stations may not improve accuracy, even when receiving signals from an SBAS satellite. In fact, it can degrade the accuracy to less than that provided by GPS satellites alone. For this reason, when you enable EGNOS/WAAS on your Garmin GPS receiver, the receiver automatically uses the method that achieves the best accuracy. To enable EGNOS/WAAS, see to page 6.

## LORAN TD Setup

LORAN C is a radio navigation aid operated and maintained in the United States by the United States Coast Guard. LORAN (LONg RANGE Navigation) system covers the entire United States and the U.S. Coastal Confluence Zone. From the perspective of a mariner, the system is used for ocean and coastal navigation. It can be used as a supplemental system for harbor and harbor approach navigation, and it is used for inland navigation by recreational vehicles.

### LORAN TD Feature

The LORAN TD (Time Delay) feature eases the transition from using LORAN to using GPS. The GPSMAP unit automatically converts GPS coordinates to LORAN TDs for those who have a collection of LORAN fixes for favorite fishing spots and other waypoints recorded as TDs. You can display your location as a TD or enter waypoints as TDs. The accuracy to be expected from this conversion is approximately 30 meters. When the unit is placed in the LORAN TD format mode, it simulates the operation of a LORAN receiver. Position coordinates might be shown as TDs, and all navigation functions may be used as if the unit was actually receiving LORAN signals.

## Using the LORAN TD Format

When creating new waypoints using LORAN TD coordinates, you must set the correct LORAN chain number and secondary stations in the **Setup TD** field before storing the waypoint. After the waypoint is stored in the unit's memory, it always references the LORAN chain number and secondary stations selected in the **Setup TD** field. If you enter a different LORAN chain number or change the secondary stations or offsets in the Setup TD field, the active waypoint information reflects those changes. Because the GPSMAP 278 does not rely on the LORAN signal for navigation, it can reference a different GRI chain and/or secondary stations and still navigate to the location stored in memory.

The LORAN TD Setup window contains the fields to select the Loran GRI-Chain Number, Primary and Secondary Stations, and TD Offsets.

### To set up Loran TD from the Main Menu:

1. Highlight the **Setup** tab on the Main Menu, and then highlight the **Location** sub tab.
2. Highlight the **Location Format** field, and press **ENTER**.
3. Highlight **Loran TD**, and press **ENTER**.
4. Highlight the **Setup** button located on the right side of the **Location Format** field, and press **ENTER**. The Loran TD Setup window appears.



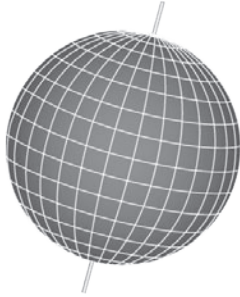
LORAN TD Setup

5. To change the settings of any of the five fields, highlight the field, press **ENTER**, select a setting using the **ROCKER**, and press **ENTER AGAIN**.
6. When finished, highlight the **Save** button, and press **ENTER**.

If the active GRI Chain, secondary stations, or offsets were changed since the waypoint was created, the waypoint references the active GRI chain and secondary stations and adjusts the TD coordinates accordingly. Remember that the GPS is not relying on the LORAN signal for navigation and actually converts the TD coordinate to a useful latitude and longitude coordinate before storing the waypoint to memory or using it for navigation. Because of this, the unit can navigate to a TD coordinate anywhere in the world.

For more information on LORAN TDs, you can download the *LORAN TD Position Format Handbook* from the Garmin Web site.

## Map Datums and Location Formats



Map Datums are based on a mathematical model of the Earth.

### **What Are Map Datums?**

A datum is a mathematical model of the Earth that approximates the shape of the Earth and enables calculations to be carried out in a consistent and accurate manner. The datum is physically represented by a framework of ground monuments whose positions have been accurately measured and calculated on this reference surface. Lines of latitude and longitude on a map or chart are referenced to a specific map datum. Every chart has a map datum reference, and you can set the GPSMAP 278 to match most of those commonly used.

If you are navigating and comparing the GPS coordinates to a map, chart, or other reference, set the map datum in the GPS unit to the same datum as the map to ensure the most accurate navigation.

### **What is a Location Format?**

Your current location can be viewed on the GPS in the form of coordinates. Because different maps and charts use different location formats, Garmin GPS units allow you to choose the correct coordinate system for the type of map you are using. The most common format is latitude and longitude, which is used by all Garmin units.

You can choose to change the location format to use with other coordinate systems in Location field of the Setup tab—Location sub tab. UTM/UPS (Universal Transverse Mercator/Universal Polar Stereographic) are easy-to-use metric grids that are found on most USGS topographic quadrangle maps. You can also select one of several other grids, including a user-definable grid (for the advanced user).

For more information about using paper maps with your Garmin unit, refer to *Using a Garmin GPS with Paper Land Maps*, available for download at [www.garmin.com/manuals/UsingGarminGPSwithPaperLandMaps\\_Manual.pdf](http://www.garmin.com/manuals/UsingGarminGPSwithPaperLandMaps_Manual.pdf).

## **Digital Selective Calling (DSC)**

DSC uses marine VHF radio GPS technologies to transmit and receive location information. DSC is used by mariners to assist them in two major areas: distress calls and position reporting.

A non-emergency DSC position report allows mariners to exchange and display the positions of one another. When you receive a DSC position, you can create a waypoint or to show the received position on an electronic map.

An emergency DSC distress call allows a vessel in trouble to transmit a substantial amount of information in a single transmission, or “call,” without the need for voice communication. When any nearby rescuer receives the DSC signal, an alarm sounds, and they immediately receive the position of the caller.

The rescuer can to navigate (Go To) the caller’s position to assist or forward the call on to the Coast Guard. When the Coast Guard receives the call, they can immediately access the caller’s information in their database while in transit to the caller’s location.

Any time a vessel receives a DSC call, the vessel can store that location and quickly navigate to that position using a Go To. This makes DSC a time-saver, especially in an emergency situation. To use DSC, users must first register their VHF radio with the FCC and receive a Maritime Mobile Service Identity (MMSI) number.

### ***Understanding Distress Calls***

With your GPSMAP 278 properly connected to a VHF radio with DSC output, you can receive any DSC distress call within range. An alert message appears and a tone sounds when a distress call is received. The alarm only sounds on a distress call; position reports do not sound the alarm. Distress calls are broadcast to all DSC users in radio range and appear with a blue and white checkered icon on the DSC Call List and Log tabs.

You can enter a caller’s name, if it is known. The caller’s name replaces the MMSI number as a reference once entered.

### ***Understanding Position Reports***

The Position Report operates similarly to the distress call. This type of contact is like a phone call; no emergency alarms are set off. Position reports are not broadcast to all DSC users and appear with a gold boat icon.

### ***Receiving DSC Calls***

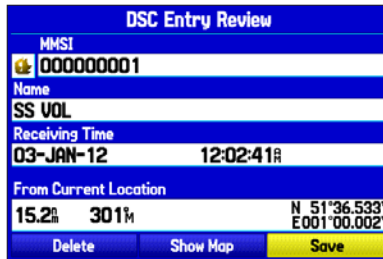
Each time you receive a distress call or position report, either the DSC Position Report Page or a Distress Call Page opens. Both pages contain identical fields to the DSC Entry Review Page.



Each entry in the Call List and Log has a corresponding DSC Entry Review Page. This page operates similarly to the Distress Page and Position Report Page. From the DSC Entry Review, you can **Delete** the entry, **Save** it as a waypoint, or show the location on the map.

### To review a call or log entry:

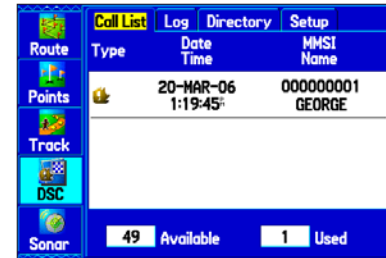
1. Open the Call List or Log from the **DSC** tab.
2. Highlight the call you want to review.
3. Press **ENTER** to open the DSC Entry Review Page.



DSC Entry Review Page

## DSC Call List

The Call List shows the 50 most recent calls, even if the unit is left unattended. The Call List only shows the most recent call from a vessel. If a second call is received, it replaces the first call in the Call List. Press **MENU** to sort the list and delete entries.



DSC Call List

## DSC Log

When DSC calls are received, they are automatically stored in the Log, with the latest call at the top. The unit can store up to 100 calls; after 100 calls are received, the oldest log file is removed when a new call is received. Press **MENU** to sort the list and delete entries.

Type	Date Time	MMSI Name
	20-MAR-06 1:19:45	00000001 ALEX
	20-MAR-06 1:19:45	00000001 ALEX

DSC Log

### Receiving a Position Report or Distress Call

After you receive a Position Report or a Distress Call, you can quickly navigate to the location. Highlight a call from the **Call List** or **Log** and press **Direct To**. The top selection in the Navigate Menu is highlighted. Press **ENTER** to go to the location.

### DSC Directory

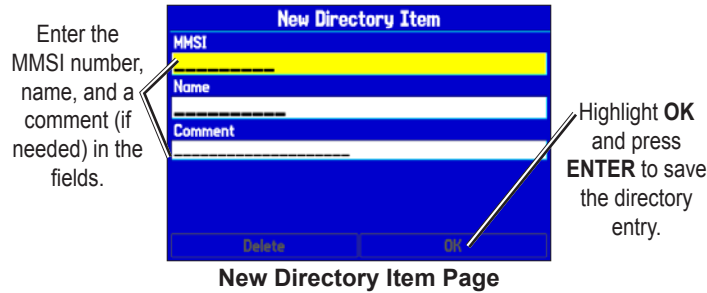
The DSC Directory acts much like a phone book and can hold up to 50 entries. Pressing **MENU** from this page allows you to add a **New Item**, **Delete** a highlighted entry, or **Delete All** entries.

MMSI	Name
00000001	ALEX
00000002	GUS

DSC Directory list

### To add a new Directory entry:

1. Open the DSC Directory on the Main Menu.
2. Use the **ROCKER** to highlight the first blank space in the directory list and press **ENTER**.  
OR  
Press **MENU**, highlight **New Item**, and press **ENTER**.
3. Enter the MMSI number, the name, and any comments.
4. When finished, highlight **OK**, and press **ENTER**.



After creating a New Directory Item, the name created is attached to that particular MMSI number. If you return to the Log, the new name appears under the corresponding MMSI number.

Another way to input a name is from the Entry Review Page or the DSC Distress Call or DSC Position Report pages. The Name and MMSI are sent to other Garmin GPS units: Only the MMSI numbers are sent to other non-Garmin DSC users.

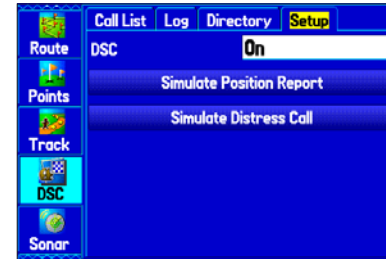
### ***Making a Distress Call***

To make a Distress Call, press the MayDay (or Distress Call) button on your VHF radio. The call transmits on an emergency channel with the MMSI number attached to the call, if you have DSC support. Any DSC-equipped mariner (on sea or land) within range can receive the call.

### ***Setting Up DSC***

Use the Setup sub tab to turn DSC on and off. If you have more than one chartplotter and only want DSC to display on another chartplotter, turn DSC off on this unit.

This Setup sub tab also allows you to simulate Distress Calls and Position Reports while the unit is in Simulator Mode. Simulating calls is helpful for practice before connecting to the real system. The Distress Call simulator also helps to check if alarms are working properly.



## **What is a Maritime Mobile Service Identity (MMSI) Number?**

MMSI allows a VHF radio to act like a phone. The 9-digit MMSI number acts like a phone number when used in a position report and as a unique identifier to the Coast Guard when used in an emergency distress call. To obtain a MMSI number, users must register their VHF radio with the FCC (Form 605). **Garmin does not supply this number!**

For more information regarding MMSI numbers, visit [www.navcen.uscg.gov/marcomms/gmdss/mmsi.htm](http://www.navcen.uscg.gov/marcomms/gmdss/mmsi.htm).

## **How Are MMSI Assignments Obtained?**

Non-commercial users, such as recreational users, who remain in United States waters and only carry VHF, EPIRB (Emergency Position Indicating Radio Beacons), and Radar are not required to have a FCC ship station license. The FCC and Coast Guard have authorized some second and third-party vendors to assign MMSI numbers. This service is limited to registering recreational vessels only. To receive information on how to obtain a recreational MMSI number, contact [www.uscg.mil/rescue21/links/mmsi.htm](http://www.uscg.mil/rescue21/links/mmsi.htm) or <http://wireless.fcc.gov/marine/>.

## **Non-Federal Users in the United States**

Commercial users, or those who travel outside the United States or Canada, must apply for a ship station license or an amendment to a ship station license. To find out if you require a Ship Station license, visit <http://wireless.fcc.gov/marine/ftsht14.html>. If your vessel requires licensing by the FCC, you can obtain a MMSI during the application/licensing process when you file FCC Forms 159 and 605.

## **Federal Users in the United States**

Federal users can obtain MMSI assignments from their agency radio spectrum management office. These procedures are currently under review by the National Telecommunications and Information Administration (NTIA).

## **Users Outside the United States**

Users can obtain an MMSI assignment from their telecommunications authority or ship registry, often by obtaining or amending their ship station license.

## **Users In Canada**

Industry Canada is responsible for assigning MMSI numbers to commercial and recreational vessels. Information is available at the following Web site: <http://apollo.ic.gc.ca/english/mmsi.html>.

### ***How Can Garmin Help You with DSC?***

To receive distress calls or position reports, you must have a DSC-equipped chartplotter as well as a VHF radio with DSC support. During normal, non-emergency position report communication, Channel 70 (156.525 MHz) has been set aside as the VHF/DSC digital call channel.

For a distress call, press the MayDay button on the VHF radio. The call transmits on an emergency channel with the MMSI number attached to the call, if the receiver has DSC support. Any DSC-equipped mariner (on sea or land) within range can receive the call.

When the GPSMAP 278 is connected to a VHF with DSC support, the GPSMAP 278 shows a call list, log, and a directory. Basic wiring is required for the Garmin unit and VHF radio to send and receive NMEA data from each other.

### **Declaration of Conformity (DoC)**

Hereby, Garmin, declares that this GPSMAP 278 is in compliance with the essential requirements and other relevant provisions of Directive 1999/5/EC.

To view the full Declaration of Conformity, see the Garmin Web site for your Garmin product: [www.garmin.com](http://www.garmin.com).

## Messages

**Accuracy Alarm**—the GPS accuracy has fallen outside of user-set value.

**Alarm Clock**—the alarm clock has sounded.

**Antenna Shorted to Ground**—the external GPS antenna has an electrical connection problem. Contact Garmin Product Support.

**Approaching Turn**—you are nearing a turn in a route.

**Arriving at Destination**—you are nearing your destination.

**Batteries Low**—the battery needs to be recharged.

**Basemap Failed Unit Needs Repair**—there is an internal problem with your unit. Contact Garmin Product Support to have the unit serviced.

**Boat Is Not Moving Fast Enough to Calibrate**—the boat is not moving fast enough for the speed wheel to provide a valid speed.

**Can't Unlock Maps**—no applicable unlock code for one or more maps was found. All MapSource maps are not accessible.

**Database Error**—internal problem with the unit. Contact your dealer or Garmin Product Support to have the unit repaired.

**Deep Water**—the water is deeper than the amount set in the Deep Water Alarm.

**Detail Maps Don't Support Routing**—maps that are loaded on the data card do not support automatic route calculation.

**Distress Call**—a DSC distress call was received. Take appropriate action.

**Dragging Anchor**—the distance set in the Anchor Drag Alarm was exceeded.

**Drift Alarm**—the water depth has changed by the amount entered in the Drift Alarm setup.

**Fish Alarm**—a fish was detected. The unit shows an icon and beeps (if enabled). This alarm does not display a message banner.

**Lost Satellite Reception**—the unit is unable to receive satellite signals.

**Memory Full**—unit memory is full, no further data can be saved.

**Memory (RAM) Failed Unit Needs Repair**—there is an internal problem with your unit. Contact Garmin Product Support to have the unit serviced.

**Memory (ROM) Failed Unit Needs Repair**—there is an internal problem with your unit. Contact Garmin Product Support to have the unit serviced.

**Near Proximity Point**—you have reached the distance set for a proximity waypoint.

**NMEA Depth is Below Transducer**—no keel offset value has been received from the external sonar device.

**No Diff GPS Location**—RTCM is selected but the unit is not receiving DGPS data.

**No Roads Near Destination**—the destination for the road route you tried to calculate is not near any roads. Select a different destination.

**No Roads Near Starting Point**—the start location for the road route you tried to calculate is not near any roads. Select a different start location.

**No DGPS Position**—no differential connection data is available, or not enough data is available to calculate a DGPS position.

**No Tide Stations for that Area**—no tide stations within 100 miles of the area.

**None Found**—no data matched the search criteria.

**Off Course**—you are off course by the distance set in the Off Course Alarm.

**Proximity Memory Full**—no additional proximity waypoints can be saved.

**Proximity Radius Overlaps**—the radius of two proximity waypoints overlap.

**Route Already Exists**—you have entered a route name that already exists.

**Route Calculation Error**—no route can be calculated.

**Route Memory Full**—no additional routes can be saved.

**Route Truncated**—uploaded route from another device has more than 300 waypoints.

**Route Waypoint Memory Full**—no additional route waypoints can be saved.

**Shallow Water**—the water is shallower than the amount set in the Shallow Water Alarm.

**Sonar Failed Unit Needs Repair**—there is an internal problem with the unit. Contact Garmin Product Support to have the unit serviced.

**Sunrise, Switching to Day Mode**—the unit is switching to Day Mode.

**Sunset, Switching to Night Mode**—the unit is switching to Night Mode.

**Track Already Exists**—a saved track with the same name already exists.

**Track Log Full**—the track log is full and track recording was turned off. To record more track points, you need to clear the track log and turn track recording on.

**Track Memory Full**—no more track data can be stored. Delete the old track data to store the new data.

**Track Truncated**—a complete uploaded track will not fit in memory. The oldest track log points have been deleted.

**Transducer Disconnected, Sonar Turned Off**—the unit has no transducer attached, has a bad cable/transducer, or has a disconnected transducer cable.

**Transfer Complete**—data transfer was completed.

**USB Connected**—the USB cable was recently plugged in.

**User Timer Expired**—the Timer Alarm value has counted down to zero.

**Water Speed Sensor is Not Working**—the speed sensor is not detected. Check the connections.

**Water Temperature Alarm**—sonar has reported a temperature above, below, inside, or outside the specified value(s).

**Waypoint Already Exists**—a waypoint with the same name already exists.

**Waypoint Memory Full**—the unit has stored the maximum number of waypoints.

## Data Field Options

The following list provides a brief description of each data field option. Some of these options are supported only by devices interfaced to your GPSMAP 278.

**Accuracy**—the current accuracy of your GPS determined location.

**Battery Timer**—the time remaining on the battery before it is fully discharged.

**Bearing**—the compass direction from your current location to a destination.

**Course**—the desired path of travel from your starting location to a destination.

**Course to Steer**—the recommended direction to steer in order to reduce cross-track error and return to the course line. Shown as **Steer**.

**Cross Track**—the distance you are off a desired course in either direction, left or right.

**Depth (Marine Only)**—the depth of water from sonar NMEA input.

**Dest Wpt**—see **Waypoint (Destination)**.

**Distance (Destination)**—the entire distance of a route, from beginning to end.

**Distance (Next)**—the distance to the next point on a route.

**ETA (Destination)**—Estimated Time of Arrival. The estimated time you will reach your destination.

**ETA (Next)**—Estimated Time of Arrival. The estimated time you will reach the next point on your route.

**ETE (Destination)**—Estimated Time Enroute. The estimated time required to reach your destination.

**ETE (Next)**—Estimated Time Enroute. The estimated time required to reach the next point on your route.

**Elevation**—the altitude (height) above or below mean sea level (MSL).

**GPS Status**—the current status of the GPS receiver, such as “3D GPS.”

**Location (Lat/Lon)**—your current location as latitude/longitude coordinates.

**Location (Selected)**—your current location described in the selected units of measure (other than lat/lon).

**Max Speed**—the maximum speed the unit has moved since last reset.

**Mov Avg Spd**—see **Trip Avg. Speed (Moving)**.

**Move Timer**—see **Trip Timer (Moving)**.

**Next Course**—the course your route will take you on after you reach the next waypoint.

**Next Turn**—the direction of the next turn on an active route.

**Next Wpt**—see **Waypoint (Next)**.

**Odometer**—the total distance traveled since the odometer was reset.

**Pointer**—the arrow indicating the direction to travel to the next point on a route.

**Power**—the power indicator icon: Battery, External Power, or Charging.

**Speed**—your current vehicle speed can be measured in kilometers per hour, miles per hour, or knots.

**Steer**—see **Course to Steer**.



**Sunrise**—the time at which the sun rises on this day.

**Sunset**—the time at which the sun sets on this day.

**Time**—the current time and date. It can be shown in 12-hour or 24-hour format in local time or universal (UTC) time.

**Track**—the direction of movement relative to a ground position. Also referred to as ground track.

**Trip Avg. Speed (Moving)**—the average speed while moving since the last reset of the trip computer. Appears as **Mov Avg Spd**.

**Trip Avg. Speed (Total)**—the total average speed traveled since the last reset of the trip computer. Appears as **Ttl Avg Spd**.

**Trip Odometer**—the total distance traveled since the trip computer was reset.

**Trip Timer (Moving)**—the length of time your vehicle has been in motion, since the trip computer was reset. Appears as **Move Timer**.

**Trip Timer (Total)**—the total time the unit has been tracking since the trip computer was reset.

**Ttl Avg Spd**—see **Trip Avg. Speed (Total)**.

**Turn**—the distance between Bearing (BRG) and Track (TRG). L indicates you should turn left. R indicates you should turn right. The degrees indicates the difference angle and the number of degrees you should turn.

**User Timer**—the timer you set on the Main Menu.

**Velocity Made Good**—the rate of closure on a destination based on your current speed and course of travel. Appears as **VMG**.

**Vertical Speed**—the rate of climb or descent.

**Voltage**—the direct current voltage level of an external power source.

**Water Speed (Marine Only)**—the data acquired from measurement devices interfaced to the unit is used to calculate your current speed over water.

**Water Temperature (Marine Only)**—the temperature of water at a measured depth using measurement devices interfaced to the unit.

**Waypoint (Destination)**—the last point on a route, your destination. Appears as **Dest Wpt**.

**Waypoint (Next)**—the next waypoint in your route. Appears as **Next Wpt**.

## Software License Agreement

BY USING THE GPSMAP 278, YOU AGREE TO BE BOUND BY THE TERMS AND CONDITIONS OF THE FOLLOWING SOFTWARE LICENSE AGREEMENT. PLEASE READ THIS AGREEMENT CAREFULLY.

Garmin grants you a limited license to use the software embedded in this device (the “Software”) in binary executable form in the normal operation of the product. Title, ownership rights, and intellectual property rights in and to the Software remain in Garmin.

You acknowledge that the Software is the property of Garmin and is protected under the United States of America copyright laws and international copyright treaties. You further acknowledge that the structure, organization, and code of the Software are valuable trade secrets of Garmin and that the Software in source code form remains a valuable trade secret of Garmin. You agree not to decompile, disassemble, modify, reverse assemble, reverse engineer, or reduce to human readable form the Software or any part thereof or create any derivative works based on the Software. You agree not to export or re-export the Software to any country in violation of the export control laws of the United States of America.

## Product Registration

Help us better support you by completing our online registration today. Go to <http://my.garmin.com>. Keep the original sales receipt, or a photocopy, in a safe place.

Serial Number: \_\_\_ \_\_\_ \_\_\_ \_\_\_ \_\_\_ \_\_\_ \_\_\_ \_\_\_

### Contact Garmin

Contact Garmin Product Support if you have any questions while using your GPSMAP 278. In the USA, go to [www.garmin.com/support](http://www.garmin.com/support), or contact Garmin USA by phone at (913) 397.8200 or (800) 800.1020.

In the UK, contact Garmin (Europe) Ltd. by phone at 0808 2380000.

In Europe, go to [www.garmin.com/support](http://www.garmin.com/support) and click **Contact Support** for in-country support information, or contact Garmin (Europe) Ltd. by phone at +44 (0) 870.8501241.

## Limited Warranty

This Garmin product is warranted to be free from defects in materials or workmanship for one year from the date of purchase. Within this period, Garmin will, at its sole option, repair or replace any components that fail in normal use. Such repairs or replacement will be made at no charge to the customer for parts or labor, provided that the customer shall be responsible for any transportation cost. This warranty does not cover failures due to abuse, misuse, accident, or unauthorized alteration or repairs.

This product is intended to be used only as a travel aid and must not be used for any purpose requiring precise measurement of direction, distance, location, or topography. Garmin makes no warranty as to the accuracy or completeness of map data in this product.

THE WARRANTIES AND REMEDIES CONTAINED HEREIN ARE EXCLUSIVE AND IN LIEU OF ALL OTHER WARRANTIES EXPRESS, IMPLIED, OR STATUTORY, INCLUDING ANY LIABILITY ARISING UNDER ANY WARRANTY OF MERCHANTABILITY OR FITNESS FOR A PARTICULAR PURPOSE, STATUTORY OR OTHERWISE. THIS WARRANTY GIVES YOU SPECIFIC LEGAL RIGHTS, WHICH MAY VARY FROM STATE TO STATE.

IN NO EVENT SHALL GARMIN BE LIABLE FOR ANY INCIDENTAL, SPECIAL, INDIRECT, OR CONSEQUENTIAL DAMAGES, WHETHER RESULTING FROM THE USE, MISUSE, OR INABILITY TO USE THIS PRODUCT OR FROM DEFECTS IN THE PRODUCT. SOME STATES DO NOT ALLOW THE EXCLUSION OF INCIDENTAL OR CONSEQUENTIAL DAMAGES, SO THE ABOVE LIMITATIONS MAY NOT APPLY TO YOU.

Garmin retains the exclusive right to repair or replace the unit or software or offer a full refund of the purchase price at its sole discretion. SUCH REMEDY SHALL BE YOUR SOLE AND EXCLUSIVE REMEDY FOR ANY BREACH OF WARRANTY.

To obtain warranty service, contact your local Garmin authorized dealer or call Garmin Product Support for shipping instructions and an RMA tracking number. Securely pack the unit and a copy of the original sales receipt, which is required as the proof of purchase for warranty repairs. Write the tracking number clearly on the outside of the package. Send the unit, freight charges prepaid, to any Garmin warranty service station.

**Online Auction Purchases:** Products sold through online auctions are not eligible for rebates or other special offers from Garmin. Online auction confirmations are not accepted for warranty verification. To obtain warranty service, an original or copy of the sales receipt from the original retailer is required. Garmin will not replace missing components from any package purchased through an online auction.

**International Purchases:** A separate warranty is provided by international distributors for units purchased outside the United States. This warranty is provided by the local in-country distributor and this distributor provides local service for your unit. Distributor warranties are only valid in the area of intended distribution. Units purchased in the United States or Canada must be returned to the Garmin service center in the United Kingdom, the United States, Canada, or Taiwan for service.

Garmin International, Inc.  
1200 E 151st Street,  
Olathe, Kansas 66062 USA  
(913) 397.8200 or (800) 800.1020  
(913) 397.8282

Garmin (Europe) Ltd.  
Liberty House, Hounsdown Business Park  
Southampton, Hampshire, SO40 9RB UK  
Tel. +44 (0) 870.8501241 (outside the UK)  
0808.2380000 (within the UK)  
Fax +44 (0) 870.8501251

Garmin Corporation  
No. 68, Jangshu 2nd Road,  
Shijr, Taipei County, Taiwan  
Tel. 886/2.2642.9199  
Fax 886/2.2642.9099

## FCC Compliance

This device complies with part 15 of the FCC Rules. Operation is subject to the following two conditions: (1) this device may not cause harmful interference, and (2) this device must accept any interference received, including interference that may cause undesired operation.

This equipment has been tested and found to comply with the limits for a Class B digital device, pursuant to part 15 of the FCC rules. These limits are designed to provide reasonable protection against harmful interference in a residential installation. This equipment generates, uses, and can radiate radio frequency energy and may cause harmful interference to radio communications if not installed and used in accordance with the instructions. However, there is no guarantee that interference will not occur in a particular installation. If this equipment does cause harmful interference to radio or television reception, which can be determined by turning the equipment off and on, the user is encouraged to try to correct the interference by one of the following measures:

- Reorient or relocate the receiving antenna.
- Increase the separation between the equipment and the receiver.
- Connect the equipment into an outlet that is on a different circuit from the GPS unit.
- Consult the dealer or an experienced radio/TV technician for help.

This product does not contain any user-serviceable parts. Repairs should only be made by an authorized Garmin service center. Unauthorized repairs or modifications could result in permanent damage to the equipment, and void your warranty and your authority to operate this device under Part 15 regulations.



# INDEX

## A

- accessories 103
- accuracy alarm 72
- acquiring satellites 5
- active route page 54
  - options menu 54
- active track tab 38, 41
- AC outlet 2
- add to route 22, 26, 31, 62
- advanced NMEA output setup 88
- alarms 80
  - anchor drag 72
  - arrival 72
  - DSC 112, 115
  - navigation 72
  - next turn 72
  - off course 72
  - proximity 36
  - sonar 73
  - system 72
- alarms tab 71
- alerts. *See* alarms
- anchor drag 72
- antenna 1, 3, 108
- append to route 31

- arrival alarm 72
- ask my preference 82
- assign category 34
- attention tone 80
- AutoLocate 3, 5
- automotive mode
  - following a saved route 60
  - pages 56–62, 63–65
- auto arrange 21
- average location 32
- avoidance button 82
- avoids 61, 82

## B

- backlight 3, 80
- basic operation 13
- battery
  - level 2
  - pack 1, 2
  - saver mode 81
- beeper 80
- bug indicator 50

## C

- cable 104
- calculation method 82
- calendar tab 73
- calibrate water speed 96
- cards, data 107
- carpool lanes 82

- categories
  - find menu 17
  - waypoint 34, 35
- caution vi
- CDI. *See* Course Deviation Indicator
- celestial tab 74
  - hunt & fish sub tab 77
  - sun & moon sub tab 76
- chain number 110
- charging 2
- cigarette lighter adapter 2
- cities 17
- cleaning iv
- clear
  - track log 39
- clock alarm 72
- color mode 79
- compass page 49, 80
  - marine timer 50
  - options menu 50
  - showing/hiding 49
- connecting the power cable 2, 104
- count down 83
- course pointer 50
- create
  - category 34
  - waypoints 28, 29
- custom avoids 61, 82

## D

- data card 107
  - information 21, 44
  - slot 1
- data fields
  - changing 43
  - options 120
- date 83
- daylight saving time 83
- day view 74
- DB-9 105
- Declaration of Conformity (DoC) 117
- declutter 47
- deep water 73
- defaults 8, 10
- delete
  - category 35
  - DSC Call 113
  - DSC directory item 114
  - track log 39
  - waypoint 36
- depth 84
- detour 62
- DGPS 86, 87, 88
  - alarm 72
- digital selective calling. *See* DSC
- direction display 84
- display tab 79

distance and speed 84  
 distress calls 69, 112–117  
 drift 73  
 DSC 69, 112–113  
 DSC Tab 69

**E**

edit  
     route 25, 26, 61  
     waypoints 33  
 editing a waypoint 33  
 EGNOS 6, 81  
 emergency 112  
 entering data 9  
 erase track log 39  
 European Geostationary Navigation  
     Overlay System. *See* EGNOS  
 exits 17  
 external power source 2  
 external voltage  
     alarm 72

**F**

faster time 82  
 FCC 112, 116, 124  
 field 8  
 find 17  
     from a different location 18, 19  
     menu 21, 24  
 finding an item 17–21

find current location 3  
 find menu 17  
 fishing 77  
 fish symbols 95  
 flasher 97  
 fuel flow 27

**G**

getting started 1  
 going to a destination 14  
 go to  
     distress call 114  
     history 20  
     position report 114  
 GPS  
     off/on 5  
     options 6  
     tips 6  
 GRI Chain 110  
 GSD 20 90

**H**

heading 85  
 highways  
     avoid 82  
 highway page 52, 80  
     hiding/showing 52  
     options menu 53  
     setup 53  
 hunt & fish sub tab 77

**I**

icons 79  
 identifier 116  
 information page 21, 47  
 initialize 3  
 installation 104  
 interval 41  
 invert 54  
 item details 21

**K**

keypad 7

**L**

language 80, 81  
 legs, track 41  
 lithium-ion battery 2  
 local time 83  
 location 6, 30  
 location format 84, 111  
 log filter 79  
 longitude 120  
 LORAN TD Setup 109  
 lost satellite reception 5

**M**

magnetic variation 85  
 main menu  
     alarms tab 71  
     calendar tab 73

    celestial tab 74  
     display tab 79  
     DSC tab 69  
     GPS tab 2, 67  
     message tab 78  
     points tab 68  
     sonar tab 71  
     track tab 68  
 manual conventions i  
 Man OverBoard. *See* MOB  
 MapSource 107  
 map datum 111  
 map orientation 45  
 map page 42, 63  
     declutter 47  
     setup 44  
 marine mode  
     pages 42–46  
 marine pages 42–55  
     active route 54  
     compass 49  
     highway 52  
     map 42  
     position data 55  
 marine timer 50  
 maritime mobile service identity.  
     *See* MMSI  
 marking a waypoint 9, 29, 30, 32  
     underwater 94

MayDay 115, 117  
 measuring distance 48  
 messages 120  
 message tab 78  
 miles 84  
 MMSI 69, 116  
 MOB 14, 16  
 month view 74  
 moon information 76

## N

NAV/MOB 16  
 navigate  
   route 14, 24, 57  
   track 14, 16, 41, 57  
 navigation  
   resuming 61  
   stopping 61  
 navigation alarms 72  
 near  
   destination 21  
   next 21  
   other 19, 21  
 new  
   altitude 6  
   location 6, 12  
   waypoint 30, 32

next turn 83  
   alarm 72  
 NMEA 86, 88, 108  
 north up 6, 45

## O

“Off Route Recalculating” Announcement 83  
 off course 72  
 off road 82  
 on-screen button 8  
 overzoom 46

## P

page layout 43  
   trip computer 65  
 panning the map 46  
 PC interface cable 105  
 persistent alarm 72  
 plan route 27, 54  
 plan trips 73  
 point 74  
 points of interest 17. *See* POIs  
 points tab 68  
 POIs 1, 106  
   custom 106  
 position data page 55  
   options menu 55  
 position report 112–117

power 2, 3, 104  
   connector 1, 2  
   outlet 2  
 practice mode. *See* simulator mode  
 project waypoint location 32  
 proximity 36  
   alarms 36  
   points tab 36  
   waypoint 37

## R

recalculating 82  
 receiver not usable 5  
 receiver status 5  
 receive satellite signals 3  
 receiving a DSC call 70, 114  
 record tracks 41  
 reference position 19  
 reset timer 83  
 reset trip data 55  
 review route 25  
 road routing tab 81  
 route 26, 74  
   add points 26, 31  
   create 22–27  
   edit 25–27  
   leg transition 27  
   preference 81  
 route tab 67  
 RTCM 86, 88

## S

sail boat racing timer 50  
 satellite acquisition 5  
 satellite signals 4  
 save present location 28  
 save this route 64  
 saving the current route 64  
 saving tracks 39, 40, 41  
 scan for a frequency 87  
 scroll bar 8  
 searching the sky 5  
 search history 20  
 selecting options 9  
 serial communications port 105  
 serial data format 86  
 serial number 1  
 setup tab 81  
   guidance sub tab 82  
   interface sub tab 86  
   location sub tab 84  
   road routing sub tab 81  
   system sub tab 81  
   timers sub tab 83  
   time sub tab 83  
   welcome sub tab 85  
 set an alarm 71  
 set date 83  
 set fuel flow 27  
 set speed 27  
 shorter distance 82

signal strength 5  
 simulate 6, 81  
   GPS 5  
 simulator mode  
   new location 12  
 software license agreement 122  
 sonar 90, 91–94  
   adjusting 92–94  
   alarms 72  
   on the map page 90  
   setting up 95, 97  
   understanding 99  
 sonar tab 71  
 sound tab 80  
 speaker 80  
 specifications 102  
 speed filter 81  
 split screen, sonar 94  
 sun & moon sub tab 76  
 system alarms 72

**T**

temperature 84, 98  
 text language 81  
 thermoclines 101  
 tide  
   chart 75  
   information 75  
   station 75  
   sub tab 75

time  
   delay 109  
   format 83  
   offsets 111  
   zone 83  
 timer 50  
 toll roads 82  
 TracBack 14, 41, 57  
 track  
   legs 41  
   log 38, 39, 41  
   tab 38  
   TracBack 40, 41  
 track tab 68  
 track up 6, 45  
 transducer 95, 100  
 trip computer page 55, 65  
   options menu 65  
   page layout 65  
 trip planning 27, 73  
 turn-by-turn route 60  
 turn off recalculation announcement  
   83  
 turn unit on and off 3

**U**

u-turns 82  
 underwater waypoints 94  
 unit overview 1  
 unpaved roads 82

usage mode 81  
 USB 86  
   connector 1, 105  
   data cable 105  
   drivers 105  
 user points tab 33  
 UTC 83  
 UTM/UPS 111

**V**

VHF 69, 112  
 via points 62  
 view details 47  
 voice language 80  
 volume 3, 80

**W**

warning v  
 warning page 3  
 water immersion iv  
 water speed 96  
   calibrating 96  
 water temp 73  
 waypoint 28  
   categories 34  
   create 28–37  
   edit 33  
   information page 21  
   name 33  
   projecting 32

proximity 37  
 reviewing 30  
 symbol 33  
 transition to next 27  
 week view 74  
 welcome message 85  
 whitelist 93, 101

**X**

xImage 106

**Z**

zoom 45





**For the latest free software updates (excluding map data) throughout the life of your  
Garmin products, visit the Garmin Web site at [www.garmin.com](http://www.garmin.com).**



© 2009 Garmin Ltd. or its subsidiaries

Garmin International, Inc.  
1200 East 151<sup>st</sup> Street, Olathe, Kansas 66062, USA

Garmin (Europe) Ltd.  
Liberty House, Hounslow Business Park, Southampton, Hampshire, SO40 9RB UK

Garmin Corporation  
No. 68, Jangshu 2nd Road, Shijr, Taipei County, Taiwan

[www.garmin.com](http://www.garmin.com)

January 2009

Part Number 190-00691-00 Rev. B

Printed in Taiwan

## Free Manuals Download Website

<http://myh66.com>

<http://usermanuals.us>

<http://www.somanuals.com>

<http://www.4manuals.cc>

<http://www.manual-lib.com>

<http://www.404manual.com>

<http://www.luxmanual.com>

<http://aubethermostatmanual.com>

Golf course search by state

<http://golfingnear.com>

Email search by domain

<http://emailbydomain.com>

Auto manuals search

<http://auto.somanuals.com>

TV manuals search

<http://tv.somanuals.com>