

# PRIMERGY TX200FT S2 Start Guide

Thank you for purchasing the PRIMERGY product.  
After reading this guide prepare PRIMERGY for use.  
For items and detailed procedures not described in this guide,  
refer to the "User's Guide" in the PRIMERGY Document & Tool CD.



## PRIMERGY TX200FT S2 Manuals

Manuals for this server can be accessed from the section below of the PRIMERGY Document & Tool CD.

[CD-ROM Drive] : \MANUAL\INDEX.PDF

Manuals can be displayed using Acrobat® Reader® or Adobe® Reader®. If using Acrobat® Reader®, use version 4.0 or later.

## 1 Checking the items supplied

Using the "Contents List", check that no supplied or attached items are missing. If any items are missing, contact an office listed in the "Contact Information".

## 2 Checking "Safety Precautions"


Before using this server, be sure to check the attached "Safety Precautions" guidelines. Also check the guidelines when connecting, installing internal options and setting up this server.


## 3 Installing internal options

If internal options have been purchased separately, install them before installing the Operating System.

### Points to note when installing internal options

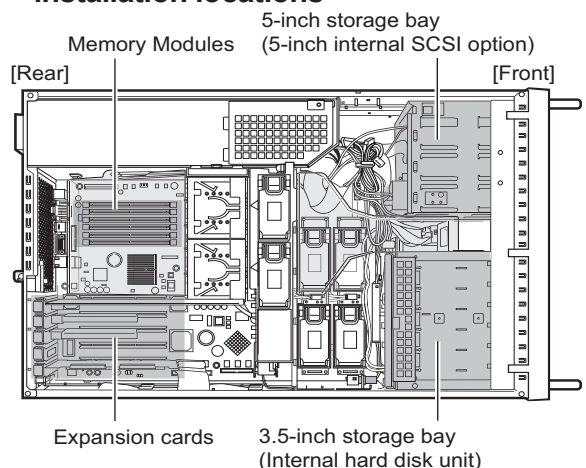
When installing internal options, perform operations after reading the following manuals.

 **User's Guide** ▶▶ "Chapter 5 Installing Internal Options"

 **Optional manual** ▶▶ "PRIMERGY ServerBooks"/ "Supplement"

When installing memory or hard disk, always install the same capacity of memory or hard disk to both enclosures.

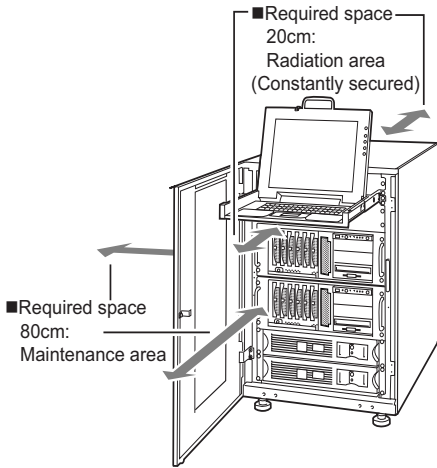
### Available internal options and installation locations



After installing internal options, check that the order and location of installation are correct and cables are correctly attached.

# 4 Checking location before installing the server

## ■ Conditions



■ When installing this server avoid the following areas.

- Humid, dusty, or oily areas
- Poorly ventilated areas
- Areas close to fire or other sources of heat
- Areas with a temperature of below 10°C or above 35°C
- Areas with humidity of less than 20% or more than 80%
- Areas where cables become trip hazards
- Areas where strong magnetic fields are generated, such as near TVs and speakers
- Areas close to water
- Areas close to direct sunlight or heating appliances
- Areas where corrosive gas is generated
- Salty areas
- Areas where the device is not stable and could tip over and hurt somebody

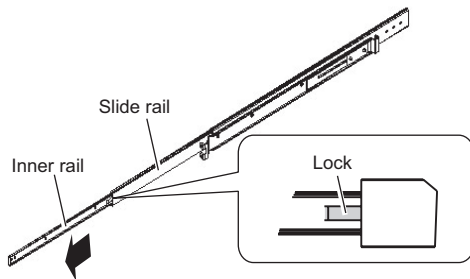
When installing 2 enclosures to a rack, install them from the top in the order of FT1 and then FT2.  
FT1 and FT2 can be identified by checking the label on the front left of each enclosure.

## ■ Installing the server to the rack

Make sure to contact an office listed in the "Contact Information" before attempting to install or remove the server from the rack.

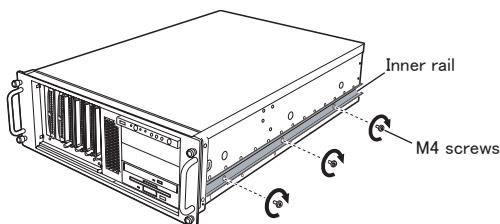
### 1 Remove the inner rail from the slide rail.

Pull out the inner rail while pushing on the lock.



### 2 Attach the inner rails to the right and left side of the server.

Secure the inner rails to 3 places on both the right and left side of the server using M4 screws.



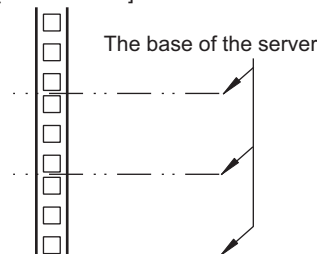
\* Also secure the opposite side in the same way

### 3 Open both the front and rear doors of the rack.

### 4 Decide where to attach the slide rail and rack nuts.

Choose the height at which to place the server in the rack by aligning the base of the server with one of the narrower spaces (Refer to the figure below) in the rack bracket.

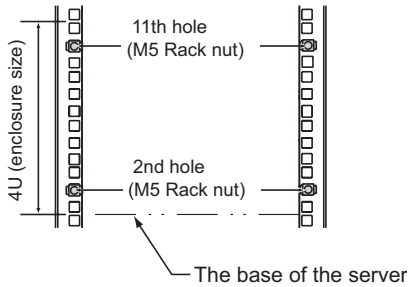
[Rack Bracket]



## 5 Attach M5 rack nuts.

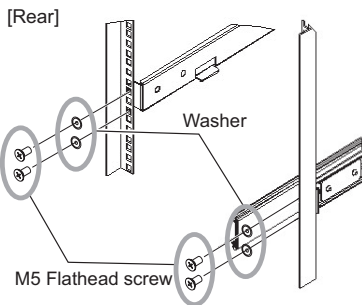
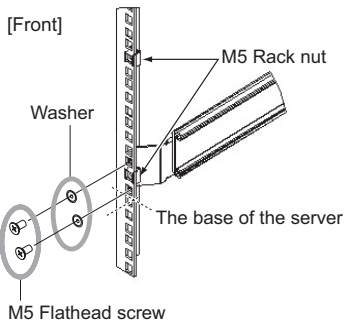
Use 4U for each enclosure.  
Insert the rack nuts in the 2nd and 11th hole positions, counting up from the base of the server, from inside of the rack bracket.

[Front of the Rack Bracket]

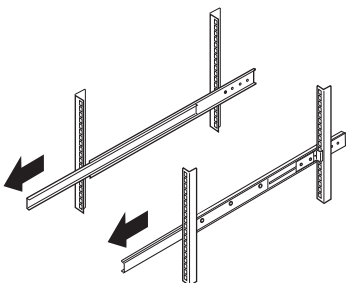


## 6 Attach the rail to the rack.

Fasten the slide rail to the 1st and 3rd hole positions, counting up from the base of the server, with M5 flathead screws and washers.



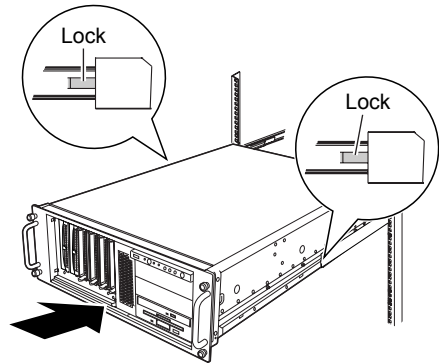
## 7 Pull the slide rails toward the front until they click into place.



## 8 Insert the server to install it to the rack.

Insert the inner rail attached to the server to the grooves of the slide rail and slide the server towards the back.

Hold the locks on the right and left of the slide rail pressed and slide the server even further into the rack.

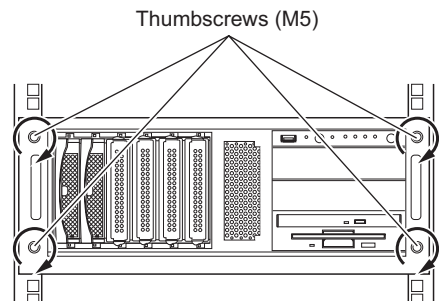


Be careful when sliding the server into the rack and returning to the original position.

There is a fear you may pinch your fingers or catch your clothing.

## 9 Fasten the server to the rack.

Fasten using 4 thumbscrews (M5).



## 10 Install the second enclosure to the rack in the same way.

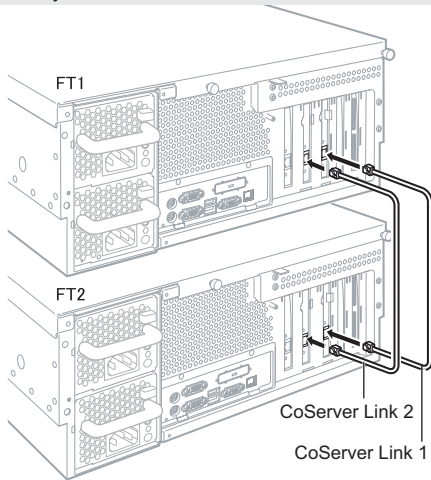
If a server or peripheral devices are not installed in the rack, install the attached blank panel.

# 5 Connecting peripheral devices

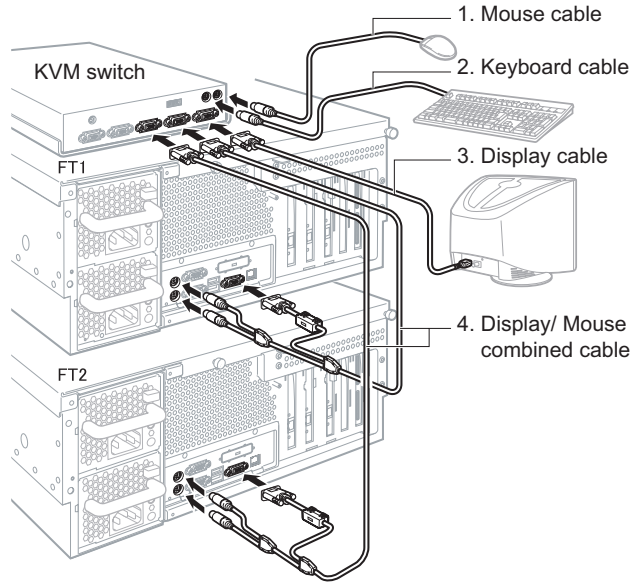
Peripheral devices, such as the keyboard and mouse, etc., are connected to the server in the following order.

## ● Connecting the LAN cables

- To prevent cables from crossing, connect to the same card slot.
- Do not connect FTvirtual Server LANs or CoServer LANs yet.

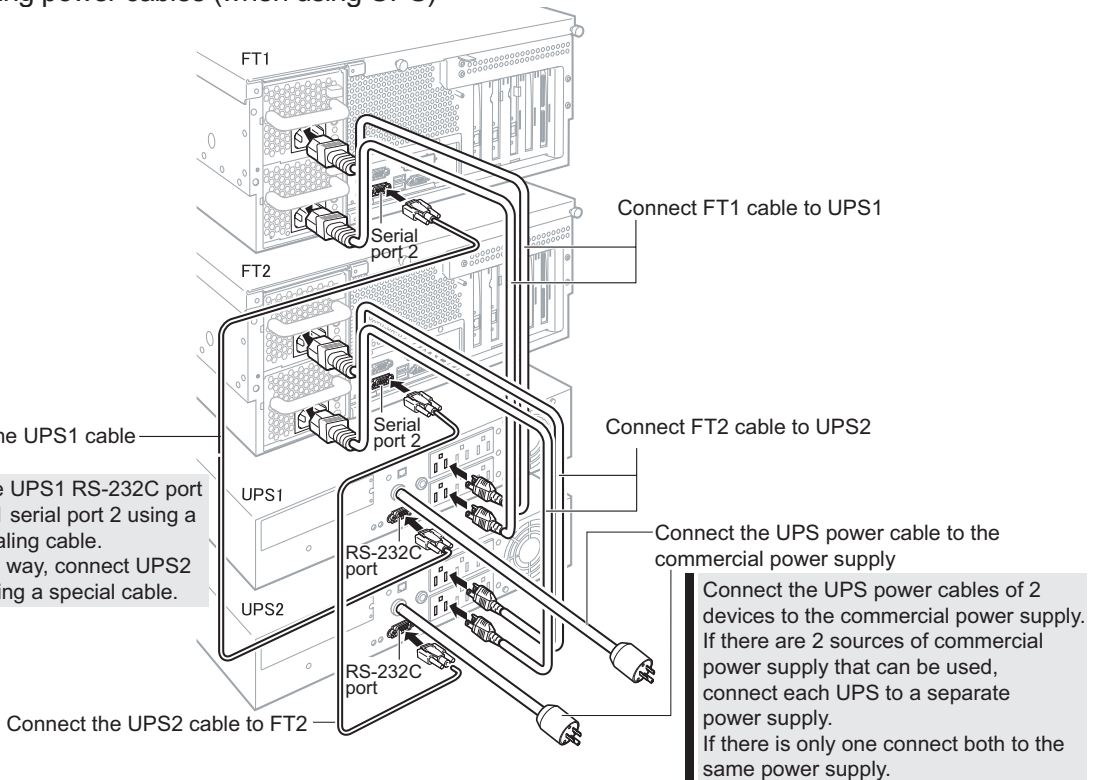


## ● Connecting the display, keyboard and mouse



## ● Connecting power cables (when using UPS)

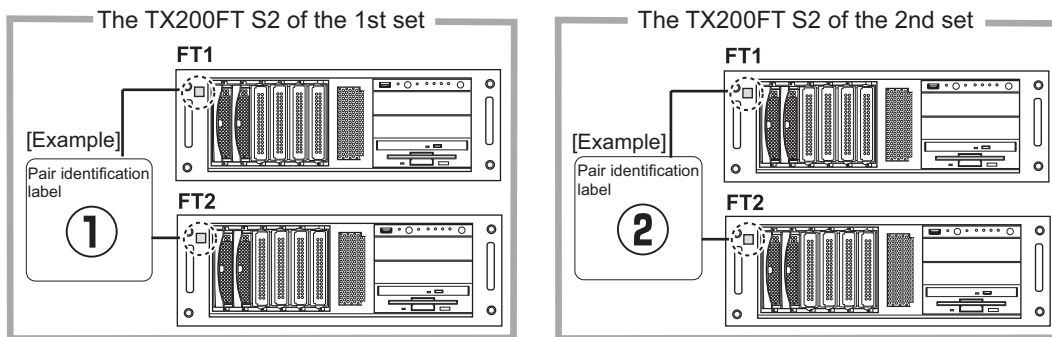
- Connect the UPS1 cable to FT1
- Connect the UPS1 RS-232C port and the FT1 serial port 2 using a Smart Signaling cable.
- In the same way, connect UPS2 and FT2 using a special cable.



## ■ Filling in the pair identification label

Fill in the label on the front of the server so that it is clear that FT1 and FT2 are a pair.

Also, inform the support desk of the product ID and number of the FT1/FT2 when you contact them. Be sure to fill in this information.



## 6 Deciding required information before running mini-setup of the OS

Before running mini-setup of the OS decide the following information.

- User information (User and password)
- Owner information
- Validation interval at automatic shutdown (for UPS use only)
- Network Configuration

Decide and enter the values in the sheet below. Be sure to keep this sheet after entering.

### ■ User information

Item		FT1 (CoServer1)	FT2 (CoServer2)
FTvirtual Server system administrator	User name	Administrator	
	Password *1		
CoServer system administrator	User name	Administrator	
	Password *1, 2		
UPS service system administrator *3	User name		
	Password		
PowerChute BusinessEdition user *4	User name		
	Password		
GAM (RAID administration) user	User name	gamroot	
	Password *1, 2		

\*1 : Do not leave the password blank.

\*2 : A separate password can be set for CoServer1 and CoServer2 but in order to avoid complicating various setting procedures it is recommended that the same password be set for both.

\*3 : This user is not related in anyway to the Windows user account because it is set on PowerChute BusinessEdition.

\*4 : UPS service logon account.

### ■ Owner information

Item	FTvirtual Server	FT1 (CoServer1)	FT2 (CoServer2)
Name			
Organization			

## ■ Validation interval at automatic shutdown

This setting is required for the use of UPS.

For details about various settings, refer to "3.4 UPS Settings" in the "User's Guide". The numbers in brackets ( ) are setting examples.

Item	Actual Setting Parameters	Time
Validation interval from the power failure to the start of FTvirtual Server shutdown	"Power Failure" - "When power fails, begin a shutdown procedure:" - "After UPS has been on battery for" in Device Properties.	minutes (1 min)
Validation interval from the start of FTvirtual Server shutdown to the start of CoServer shutdown (Command file execution time)	Select Device properties "Shutdown Sequence" - "Configure Shutdown Sequence" - "Next" - "OS" and then "Delay".	minutes (3 mins)
Validation interval from the start of CoServer shutdown to UPS power off (time required for OS shutdown)	Select Device properties "Shutdown Sequence" - "Configure Shutdown Sequence" - "Next" - "OS" and then "Duration".	minutes (1 minute 30 seconds)
Total		minutes seconds (5 minutes 30 seconds)

## ■ Network configuration

CoServer Link1, CoServer Link2, Virtual Network1 and Virtual Network2 are internal network settings. Normally modifications are not required.

However, when there is a conflict with an external network, refer to "3.2 Network Functions" in the "User's Guide" before setting. Figures in the brackets ( ) are default values.

Item	FTvirtual Server	
	IP address	Subnet mask
Computer name		
Local area connection (FTvirtual Server LAN)		
Virtual Network1	(192 . 168 . 181 . 81)	(255 . 255 . 255 . 252)
Virtual Network2	(192 . 168 . 181 . 85)	(255 . 255 . 255 . 252)

Item	CoServer1 (FT1)		CoServer2 (FT2)	
	IP address	Subnet mask	IP address	Subnet mask
Computer name				
CoServer Management (CoServer LAN)				
CoServer Link1	(192 .168 .181 . 89)	(255 .255 .255 .252)	(192 .168 .181 . 90)	(255 .255 .255 .252)
CoServer Link2	(192 .168 .181 . 93)	(255 .255 .255 .252)	(192 .168 .181 . 94)	(255 .255 .255 .252)
Virtual Network	(192 .168 .181 . 82)	(255 .255 .255 .252)	(192 .168 .181 . 86)	(255 .255 .255 .252)

When setting, the FTvirtual Server LAN adapter appears (Redirected 0) on the CoServer, but it is reserved because it is used by the FTvirtual Server.

Do not bind internet protocol (TCP/IP) and do not set IP addresses or subnet masks to these adapters on the CoServer. Set the FTvirtual Server LAN IP address and the subnet mask on the FTvirtual Server.

# 7 Turning on the power and run mini-setup of each OS

This section explains how to run mini-setup of CoServer1, CoServer2 and FTvirtual Server.

To run mini-setup of FTvirtual Server, CoServer1 and 2 must already be run mini-setup. Run mini-setup in the following order.

- (1) Turn on the FT1 power and run mini-setup of CoServer1. Do not yet turn on the power of FT2.
- (2) Turn on the FT2 power and run mini-setup of CoServer2. The procedure is the same as for CoServer1.
- (3) Logon to CoServer1 and 2 and run mini-setup of FTvirtual Server.

- CoServer1 and CoServer2 cannot be run mini-setup at the same time. After turning on the power of FT1 do not turn on the power of FT2 until CoServer1 has finished running mini-setup.
- When an internal hard disk has been added or changing the size of C drive on the FTvirtual Server, before running mini-setup of each OS, perform recovery using the recovery CD.

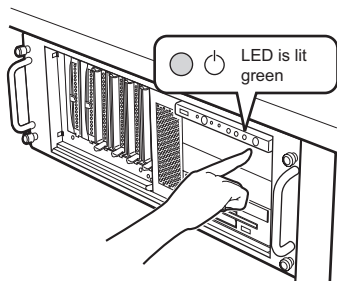
 **User's Guide** ▶▶ "7.7 Restoring Settings at the Time of Purchase (Recovery)"

## ■ Running mini-setup of the CoServer1

- 1** Check that the FTvirtual Server LAN and CoServer LAN are not connected to the server and turn on the power supply of the peripheral devices.

When connecting UPS check that UPS has a normal power supply.

- 2** Press the power switch on the FT1.



When the power is turned on, the server is checked using "Power On Self Test (POST)".

If any abnormalities are detected by POST, error messages are displayed.

 **User's Guide** ▶▶ "7.3 Error Messages"

After POST is finished, running mini-setup operations automatically start.

- 3** When running mini-setup, enter the following parameters.

Check the parameter setting values and click "Next".

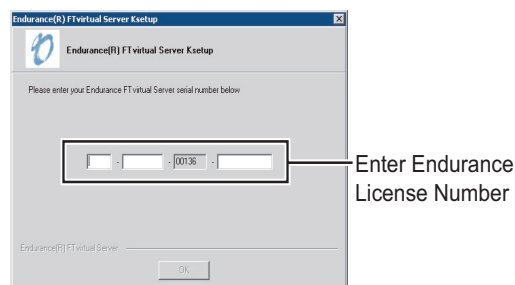
- Personalize Your Software (Name, organization)
- Computer name & Administrator password
- Date and Time Settings

- Adding/deleting devices become easier if the password for CoServer1 and CoServer2 are the same.
- You must set a password. If not, an FT-system internal communication problem will occur.
- Sometimes you cannot return even by pressing [Back]. Check the parameters carefully and click [Next].

After completing setup, the server restarts and start Windows OS.

- 4** Logon to CoServer1.

When the following screen appears enter "Endurance License Number" and click [OK].



- The Endurance License Number is printed in "About Endurance License Number for Version 6.x" supplied with the recovery CD. This number can be used for both CoServer1 and CoServer2.
- Depending on the environment sometimes a NumLock status occurs. In this case, press the NumLock key to unlock the lock and then enter Endurance License Number.
- After logging on to CoServer, a DOS prompt window appears at the same time as the "Endurance License Number" dialogue box appears. However, do not perform operations such as closing DOS prompt windows.

A message that recommends restarting appears.



## 5 Click [Yes].

CoServer restarts.

After restarting, the POST screen (or "PRIMERGY" logo) appears.

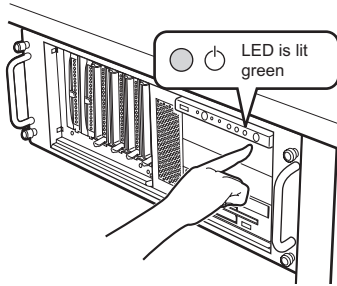
- When the server restarts, press the power switch on the front of the server straight away and turn off the power supply.

## ■ Running mini-setup of the CoServer2

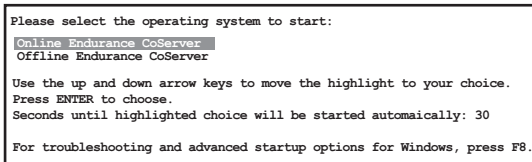
The running mini-setup procedure is the same as for CoServer1. Press the power switch on the front of FT2 and turn on the power supply. For details about further operations, refer to "■ Running mini-setup of the CoServer1" and run mini-setup.

## ■ Running mini-setup of the FTvirtual server

- Turn on the power supply of FT1 and FT2.



After POST has finished, the OS selection window appears.



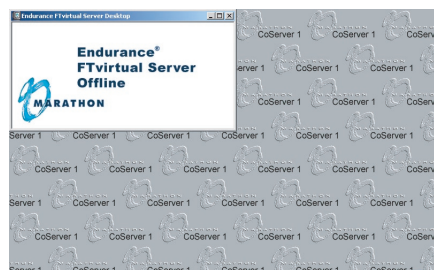
- Check that "Online Endurance CoServer" has been selected and press the [Enter] key.

The logon window appears.

If the above operations are not performed, after a temporary stop (30 secs) it begins to operate as the "Online Endurance CoServer". It is fine to move on to the next operation.

- Enter the administrators privileges password in FT1 and logon to CoServer1.

The following window appears.



- Click [Start] → [All Programs] → [Marathon Endurance] → [Management Tasks] → [FTvirtual Server] → [Start] in CoServer1 in this order.

The start window of Windows setup wizard appears.

Nothing is displayed on the Endurance FTvirtual Server Desktop momentarily, but this does not indicate an error. Please wait for a short while.

- Click [Next].

Start setup. During setup enter the following parameters. All other parameters are optional. After checking the parameter setting values, click [Next].

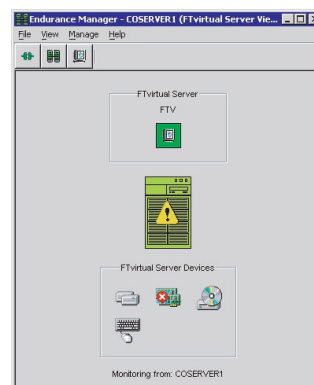
- License Agreement
- Personalize Your Software (Name, organization)
- Computer name & Administrator password
- Date and Time Settings

When setup is complete, the FTvirtual Server restarts and the logon window appears.

- Logon to FTvirtual Server.

- Start Endurance Manager.

Click [Start] → [All Programs] → [Marathon Endurance] → [Manager] to start Endurance Manager.

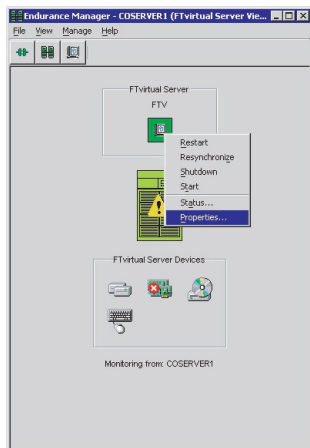


If the FTvirtual Server LAN cable is not connected to the HUB, an error, as shown in the figure above, will be displayed but this does not indicate an error. Continue operations.

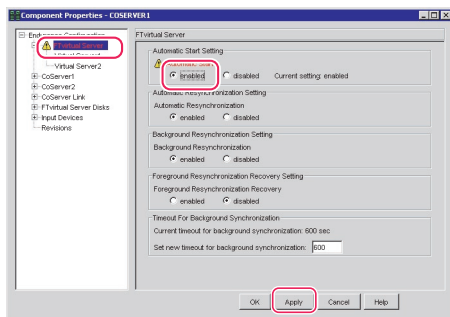


- Right-click on the FTvirtual Server icon and select "Properties".

The [Component Properties] window appears.



- Select "FTvirtual Server" from the tree on the left, check "enabled" in "Automatic start" and click [Apply].



A red warning message will appear in the top of the properties window but it just indicates a change in properties and will have no effect on operations.

- Click [OK] to close the [Component Properties] window and Endurance Manager will end.

- Set IP addresses for the following adapters.

Because DHCP is preset to automatically acquire IP addresses, if these IP addresses are acceptable the following procedures are not required.

- CoServer1 "CoServer Management"
- CoServer2 "CoServer Management"
- FTvirtual Server "Local Area Connection"

"Redirected0" in CoServer1 and CoServer 2 has been reserved for use by FTvirtual Server. Do not bind internet protocol (TCP/IP) to these adapters. Set the FTvirtual Server LAN IP address and the subnet mask on the FTvirtual Server.

- If optional devices have been added before running mini-setup of the OS, refer to the following and perform operations after expansion.

- When a 5-inch internal backup device is added



User's Guide

► "5.8.4 Procedure after Installing the Internal Backup Device"

## 8 Turning the server off

Perform shutdown in the FTvirtual Server window using the following procedures.

- Click [Start] → [All Programs] → [Marathon Endurance] → [Management Tasks] → [Endurance Configuration] → [Shutdown] in this order.

A dialogue box for confirming shutdown will appear.

- Click [OK].

After shutting down FTvirtual Server, shutdown CoServer1 and CoServer2 and the power supply will be turned off automatically.



When turning on the server again after turning it off, wait for at least ten seconds and then press the power switch.

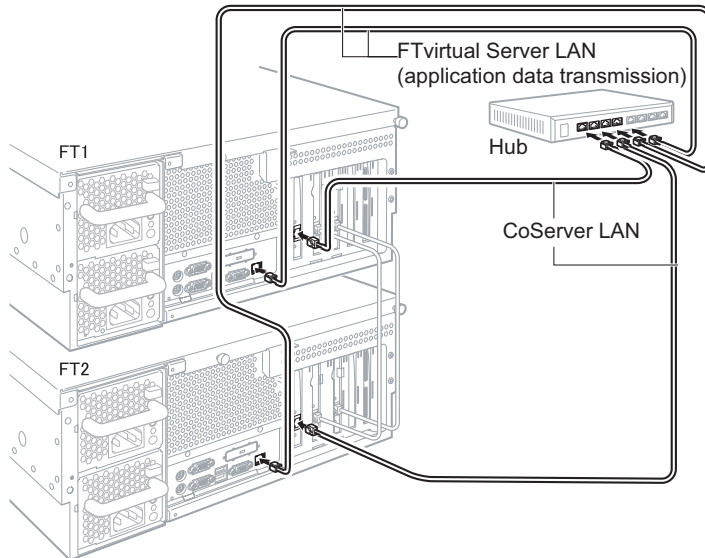
If the server is turned on straight after being turned off, an error will occur that may be cause damage.

## 9 Connecting the remaining LAN cables

After turning off the server, connect the remaining LAN cables as described below.

In the FT-system, all FTvirtual Server LAN (application data transmission), CoServer Link, and CoServer LANs are used to control the system so it is important not to forget to connect the CoServer LAN cable to a HUB.

### •Connecting the LAN cables



## 10 Pre-operation settings

After running mini-setup of the OS, refer to the following and perform FT-system settings.

 **User's Guide** ►► "Chapter 3 Pre-operation Settings"

When using UPS, perform UPS settings.

 **User's Guide** ►► "3.4 UPS setting"

For details about maintenance after operations have started, refer to "User's Guide Chapter 7 Operation and Maintenance".

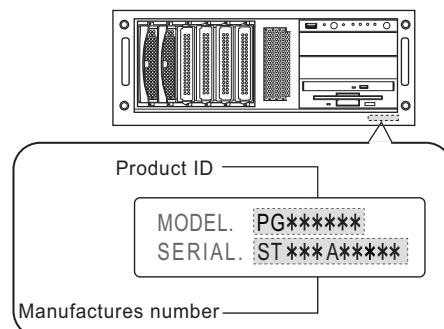
## 11 Support and Service

### •PRIMERGY information

The latest PRIMERGY, driver, and software information is available at the address below. Use as necessary.  
<http://primergy.fujitsu.com>

### •Before requesting repairs

If an error occurs in this server, refer to "User's Guide 7.2 Troubleshooting". If problems can still not be solved, contact an office listed in the "Contact Information". When contacting the office listed in the "Contact Information", inform them of the product ID and manufactures number which are detailed on labels on the base of the server.



Also read the points to note about requesting repairs beforehand in "User's Guide 7.10.2 Contacting Maintenance Support".  
Print the "Configuration Sheets" - "Accident Sheet" and enter the checked information.

Be careful not to lose this sheet, as you must provide this information when you contact an office listed in the "Contact Information" your maintenance engineer.

### ● Non-durable components

Depending on the environment and period of usage there will be non-durable components that require replacement within the warranty period. Customers who have signed up to hardware maintenance contract will be provided with replacement parts free of charge and will have higher priority for replacement.

Customers not signed up to hardware maintenance contract will be charged for operation cost (including the maintenance parts) replacement separately.

### - Service life of non-durable components

The service life of non-durable components is decided based on the presumption that the server is used in an appropriate environment.

The temperature of the operating environment is between 10°C and 35°C. However, the service life is calculated using 25°C as the average temperature so air conditioning should be used.

### - Non-durable component

Item	Description
SCSI Array Controller card battery	Regardless of how long power has been turned on or off, a replacement message will appear for non-durable components after 3 years.

## 12 Recycling

When disposing of this server, contact an office listed in the "Contact Information".  
This server must be disposed of as industrial waste.

## Contact Information

- Australia:  
Fujitsu Australia Limited  
Tel: +61-2-9776-4555  
Fax: +61-2-9776-4556  
Address: 2 Julius Avenue (Cnr Delhi Road)  
North Ryde, Australia N.S.W. 2113
- China:  
Fujitsu (China) Holdings Co., Ltd.  
Tel: +86-21-5292-9889  
Fax: +86-21-5292-9566  
Address: 18F, Citic Square, 1168 West Nanjing Road Shanghai, China 200041
- Hong Kong:  
Fujitsu Hong Kong Limited  
Tel: +852-2827-5780  
Fax: +852-2827-4724  
Address: 10/F, Lincoln House, 979 King's Road  
Taikoo Place, Island East, Hong Kong
- Indonesia:  
PT. Fujitsu Systems Indonesia Offices Headquarters  
Tel: +62-21-570-9330 (Hunting)  
Fax: +62-21-573-5150  
Address: Wisma Kyoei Prince 10th Floor Jl. Jend. Sudirman Kav 3-4  
Jakarta, Indonesia 10220
- Korea:  
Fujitsu Korea Ltd.  
Tel: +82-2-3787-6000  
Fax: +82-2-3787-6066  
Address: Susong Tower Building, 83-1 Susong-Dong  
Jongno-Gu, Seoul, Republic of Korea 110-140
- Malaysia:  
Fujitsu (Malaysia) Sdn. Bhd.  
Tel: +60-3-8318-3700  
Fax: +60-3-8318-8700  
Address: 1st Floor, No.3505 Jalan Technokrat 5  
63000 Cyberjaya, Selangor Darul Ehsan Malaysia
- Philippines:  
Fujitsu Philippines, Inc.  
Tel: +63-2-812-4001  
Fax: +63-2-817-7576  
Address: 2nd Floor, United Life Building, A. Arnaiz  
Legaspi Village, Makati, Metro Manila Philippines
- Singapore:  
Fujitsu Asia Pte. Ltd.  
Tel: +65-6777-6577  
Fax: +65-6771-5502  
Address: 20, Science Park Road, #03-01 TeleTech Park,  
Singapore Science Park II, Singapore 117674
- Taiwan:  
Fujitsu Taiwan Limited  
Tel: +886-2-2311-2255  
Fax: +886-2-2311-2277  
Address: 19F, No.39, Section 1, Chung hwa Road Taipei, Taiwan
- Thailand:  
Fujitsu Systems Business (Thailand) Ltd.  
Tel: +66-2-500-1500  
Fax: +66-2-500-1555  
Address: 12th Floor, Olympia Thai Tower, 444 Rachadapisek Road  
Samsennok, Huaykwang, Bangkok, Thailand 10310
- Vietnam:  
Fujitsu Vietnam Limited  
Tel: +84-4-831-3895  
Fax: +84-4-831-3898  
Address: Unit 802-8th floor, Fortuna Tower Hanoi 6B Lang ha Street,  
Ba dinh District, Hanoi Socialist Republic of Vietnam
- United States:  
Fujitsu Computer Systems Corporation  
Tel: +1-800-831-3183  
Fax: +1-408-496-0575  
Address: 1250 East Arques Avenue, Sunnyvale, CA USA 94088-3470

For the latest information, refer to the Fujitsu PRIMERGY website (<http://primergy.fujitsu.com>).

# Notes

## Data Backup

To protect data stored in this device (including basic software and application software), perform backup and other necessary operations. Note that data protection is not guaranteed when repairs are performed. It is the customer's responsibility to maintain backup copies in advance.  
In case of data loss, Fujitsu assumes no liability for data maintenance or restoration and damages that occur as a result of the data loss for any reason, except for items covered under warranty.

## High Safety

The Products are designed, developed and manufactured as contemplated or general use, including without limitation, general office use, personal use, household use, and ordinary industrial use, but are not designed, developed and manufactured as contemplated for use accompanying fatal risks or dangers that, unless extremely high safety is secured, could lead directly to death, personal injury, severe physical damage, or other loss (hereinafter "High Safety Required Use"), including without limitation, nuclear reaction control in nuclear facility, aircraft flight control, air traffic control, mass transport control, medical life support system, missile launch control in weapon system. You shall not use this Product without securing the sufficient safety required for the High Safety Required Use. If you wish to use this Product for High Safety Required Use, please consult with our sales representatives in charge before such use.

Problems may occur with this device in the event of an instantaneous voltage drop of the power supply due to lightning, etc. To prevent an instantaneous voltage drop of the power supply, we recommend that you use an uninterruptible power supply system.

## Software License Agreement

Please read the following terms and conditions before you use the software preinstalled in the server you purchased or the software attached to the server (hereinafter collectively "Software"). By using the Software, you are agreeing to be bound by all of the following terms and conditions. Notwithstanding the foregoing, if any software subject to any other terms and conditions than those of this agreement is preinstalled in or attached to the server as a part of Software, you shall comply with such other terms and conditions.

### I. License and Copyrights

Fujitsu Limited (hereinafter "Fujitsu") grants you a limited, non-exclusive, license to:

- (i) use the Software solely on the server, which the Software is preinstalled in or is attached to.;
- (ii) copy the Software for installation and backup purpose; and
- (iii) embed the Software to other software, in whole or in part, in accordance with the procedure described in the applicable documentation.

For the avoidance of doubt, you are only granted the right to use this Software and all copyright, title and other ownership rights to this Software and any derivative works thereof is retained by FUJITSU and/or its suppliers.

### II. Copies

1. You may only copy the Software as set forth in Clause I (ii) and (iii) above. If you embed the Software in another software pursuant to Clause I (iii), you may not make copies of such software as so embedded other than one (1) backup copy unless expressly otherwise licensed by Fujitsu. If, however, a copy protection mechanism is implemented in the Software, you cannot and are prohibited from making any copies of the Software.

2. You shall include all copyright notices and proprietary legends on all copies of the Software and shall not modify, delete or conceal such notices and legends.

3. All terms and conditions contained herein shall apply to the copies of the Software.

### III. Assignment

You may not assign the Software, except the case where you assign the Software with all materials related to the Software, including the media of the Software attached to the server, the documentation, and the backup copy, together with the server. Notwithstanding the foregoing, you may not rent, lease, sublicense, create lien against the Software.

### IV. Modification

You may not modify or, except to the extent expressly permitted by applicable law, reverse engineer (including, without limitation, decompile and disassemble) the Software, and you may not permit any third party to do so.

### V. Limited Warranty

1. You acknowledge that Fujitsu cannot guarantee that your use of the Software will be uninterrupted, that the Software will be error free or that all Software errors will be corrected. However, (i) within ninety (90) days following your acquisition of the server you notify the reseller from whom you have acquired the server of non-conformance of the Software to the description in the documentation, or (ii) within one (1) month following your acquisition of the server you notify the reseller from which you have acquired the server of physical defects of the media containing the Software, Fujitsu will, at its sole discretion, correct the non-conformance or provide you with information necessary to correct the non-conformance, or replace the defective media with new media. Only if you inform such reseller of your problem with the Software during the above mentioned warranty period and provide satisfactory evidence of the date you acquired the server Fujitsu will be obligated to honor this warranty.

2. Except for Clause V Section 1, Fujitsu disclaims all other warranty, express or implied, and expressly disclaims any implied, including without limitation, all-warranty of merchantability, fitness for a particular purpose or non-infringement of third parties' rights. In no event will Fujitsu be liable for any direct, indirect, incidental or consequential damages (including, but not limited to, loss of profits, interruption of business, loss of business information, and other pecuniary damages) resulting from or arising out of the use or inability to use the Software even if Fujitsu has been advised of the possibility of such damages.

3. Even if a part of the Software has been developed by a third party, the warranty and remedy for such part of the Software are limited to those provided for in Clause V Section 1 and 2 above, and such third party shall have no liability for any claim arising out of the use, performance or non-conformance of the Software.

### VI. Law

This Agreement and all matters arising out of or relating to this Agreement will be governed by the laws of Japan without giving effect to any choice of law rule.

### VII. High Safety

These Software are designed, developed and manufactured as contemplated for general use, including without limitation, general office use, personal use, household use, and ordinary industrial use, but are not designed, developed and manufactured as contemplated for use accompanying fatal risks or dangers that, unless extremely high safety is secured, could lead directly to death, personal injury, severe physical damage, or other loss (hereinafter "High Safety Required Use"), including without limitation, nuclear reaction control in nuclear facility, aircraft flight control, air traffic control, mass transport control, medical life support system, missile launch control in weapon system. You shall not use this Software without securing the sufficient safety required for the High Safety Required Use.

### VIII Export

You shall comply fully with all relevant export laws and regulations with respect to this Software, including, but not limited to, the export laws and regulations of Japan. Without limiting the generality of the foregoing, You will not export or transfer this Software, or any product thereof (including any your application program), to any destinations prohibited by any such laws and regulations.

### IV. Entire Agreement

The terms and conditions hereof represent the complete agreement concerning this license between the parties and supersede all prior or contemporaneous written communications between them. In the event that any additional terms or conditions are provided in the accompanied documentation, you must also comply with such terms and conditions.

Fujitsu Limited

Microsoft, Windows, Windows Server are registered trademarks of the Microsoft Corporation in the USA and other countries.

Adobe, Adobe Acrobat, Acrobat Reader are registered trademarks of Adobe Systems Incorporated.

Endurance, Marathon Assured Availability, SplitSite, Marathon FTvirtual Server, and the Marathon logo are either registered trademarks or trademarks of Marathon Technologies Corporation in the United States and/or other countries.

Other product names used are trademarks or registered trademarks of their respective manufacturers.

Other products are copyrights of their respective manufacturers.

All Rights Reserved, Copyright© FUJITSU LIMITED 2005

Screen shot(s) reprinted with permission from Microsoft Corporation.

## Free Manuals Download Website

<http://myh66.com>

<http://usermanuals.us>

<http://www.somanuals.com>

<http://www.4manuals.cc>

<http://www.manual-lib.com>

<http://www.404manual.com>

<http://www.luxmanual.com>

<http://aubethermostatmanual.com>

Golf course search by state

<http://golfingnear.com>

Email search by domain

<http://emailbydomain.com>

Auto manuals search

<http://auto.somanuals.com>

TV manuals search

<http://tv.somanuals.com>