

# eureka!

Invented for the way you clean™

8860-8899 Series

## OWNER'S GUIDE

### Guía del Propietario

### Le Guide du Propriétaire



Thank you for purchasing your new Eureka Vacuum!  
¡Gracias por la compra de su nueva aspiradora Eureka!  
Merci d'avoir acheté votre nouvel aspirateur Eureka!

Before Returning, Call  
Eureka Customer Service

Antes de enviar de regreso, llame al Servicio al Cliente de Eureka

Avant de le retourner, appelez le service à la clientèle Eureka

HELPLINE LÍNEA DE AYUDA LIGNE D'AIDE

1-800-282-2886



8 a.m. to 7:30 p.m. (CST), Monday - Friday  
10 a.m. to 6:30 p.m. (CST), Saturday - Sunday

8 a.m. a 7:30 p.m. (CST), de Lunes a viernes  
10 a.m. a 6:30 p.m. (CST), sábado y domingo

8 h à 19 h 30 (CST), lundi au vendredi  
10 h à 18 h 30 (CST), samedi et dimanche

**Promotional code: 8860ser09**

**Special Offer – receive 15% off parts and accessories when ordering online. Promotion excludes vacuums.**

**Oferta especial – descuento 15% cuando compra partes y accesorios con el internet. Oferta excluye aspiradoras.**

**Offre spéciale – recevez 15% de réduction sur les pièces et les accessoires lorsque vous commandez en ligne. La promotion exclut les aspirateurs.**

**www.eureka.com**

Upright Vacuum Cleaner  
Household Type  
Aspiradora vertical  
tipo doméstico  
Aspirateur vertical  
de type résidentiel

# Where to Find Important Vacuum Cleaner Information

## Please Retain

Record the model, type and serial number below.

Date of Purchase \_\_\_\_\_ (keep your receipt)

Model & Type \_\_\_\_\_

Serial Number \_\_\_\_\_



This information is located on the rating plate on the lower back side of the vacuum.  
Refer to these numbers when ordering parts, accessories or when service is needed.

## Before You Start Your Vacuum Cleaner

Refer to **Quick Start Guide** for assembly and use. This **Owner's Guide** provides important instructions to prolong the life of your Eureka vacuum cleaner.

## Inspection

Carefully unpack and inspect your new Eureka vacuum cleaner for shipping damage. Each unit is tested and thoroughly inspected before shipping. For instructions regarding any shipping damage, call Eureka Customer Service **HELPLINE 1-800-282-2886** immediately.

### Table of Contents

<b>Important Safeguards</b> .....	1
<b>How to Identify Parts of Vacuum Cleaner</b> .....	2
<b>Filter Maintenance Schedule</b> .....	2
Filter, screen and HEPA filter.	
<b>How to Use Accessories</b> .....	3
Telescopic self-cleaning duster, crevice tool, extension wand, dusting brush, turbo nozzle and stair hose.	
<b>How to Maintain Your Vacuum Cleaner</b> .....	4
Replace brush roll or clogged belt, check brush roll light and reset button, and change light bulb.	
<b>How to Clear a Hose Blockage</b> .....	5
<b>Eureka Limited Warranty Information</b> .....	5
<b>Thermal Cut-Off and Problem Solving</b> .....	6
<b>Spanish Owner's Guide</b> .....	7-13
<b>French Owner's Guide</b> .....	14-20
<b>Order Forms and Parts List</b> .....	21-22



Follow caution information wherever you see this symbol.

# IMPORTANT SAFEGUARDS

When using an electrical appliance, basic precautions should always be followed, including the following:

## READ ALL INSTRUCTIONS BEFORE USING THIS VACUUM CLEANER WARNING



To reduce the risk of fire, electric shock, or injury:

- Do not use outdoors or on wet surfaces.
- **Do not leave vacuum cleaner when plugged in.** Turn off the switch and unplug the electrical cord when not in use and before servicing.
- Do not allow to be used as a toy. Close attention is necessary when used by or near children.
- Use only as described in this manual. Use only manufacturer's recommended attachments.
- Do not use with damaged cord or plug. If vacuum cleaner is not working as it should, has been dropped, damaged, left outdoors, or dropped into water, return it to a service center before using.
- Do not pull or carry by cord. Do not use cord as a handle. Do not close a door on cord or pull cord around sharp edges or corners. Do not run vacuum cleaner over cord. Keep cord away from heated surfaces.
- Do not use extension cords or outlets with inadequate current carrying capacity.
- Turn off all controls before unplugging.
- Do not unplug by pulling on cord. To unplug, grasp the plug, not the cord.
- Do not handle plug or vacuum cleaner with wet hands.
- Do not put any object into openings. Do not use with any opening blocked; keep free of dust, lint, hair, and anything that may reduce airflow.
- This vacuum cleaner creates suction and contains a revolving brush roll. Keep hair, loose clothing, fingers, and all parts of body away from openings and moving parts.
- Do not place vacuum cleaner on furniture or stairs as the brush roll may cause damage. Place vacuum cleaner on floor with the handle in storage position while using attachments.
- Do not pick up anything that is burning or smoking, such as cigarettes, matches, or hot ashes.
- Do not use without dust cup, filter and screen, and HEPA exhaust filter in place.
- Belt pulleys can become hot during normal use. To prevent burns, avoid touching the belt pulley when servicing the drive belt.
- Use extra care when cleaning on stairs.
- Do not use to pick up flammable or combustible liquids such as gasoline, or use in areas where they may be present.
- Store your vacuum cleaner indoors in a cool, dry area.
- Keep your work area well lighted.
- Unplug electrical appliances before vacuuming them.
- Unplug before connecting turbo nozzle.

## SAVE THESE INSTRUCTIONS

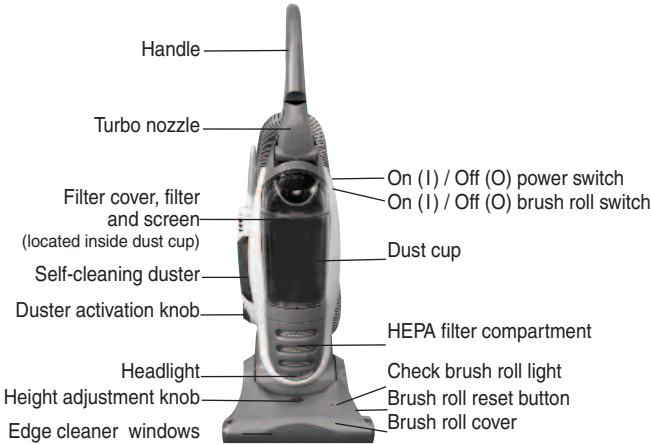
To reduce the risk of electric shock, this appliance has a polarized plug (one blade is wider than the other). This plug will fit in a polarized outlet only one way. If the plug does not fit fully into the outlet, reverse the plug. If it still does not fit, contact a qualified electrician to install the proper outlet. Do not change the plug in any way.

### Motor




**Do Not Oil** the motor or the brush roll at any time. The bearings are permanently lubricated and sealed.

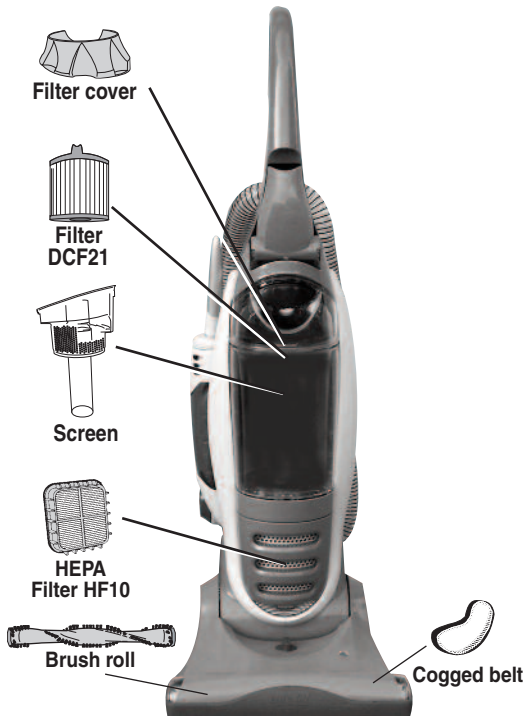
# How to Identify Parts of Vacuum Cleaner



## Filter Maintenance Schedule

**Maintenance Schedule is also located on back side of dust cup.**

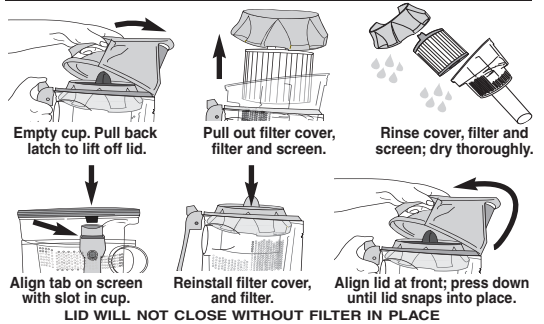
 Assemble the vacuum cleaner before using. Moving parts. Make sure ON/OFF switch is in OFF (O) position before plugging in power cord.



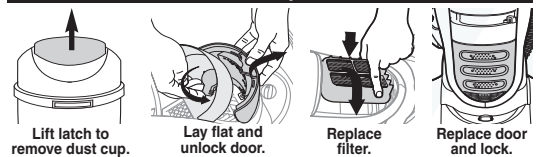
### DUST CUP – Empty after each use



### FILTER DCF21 – Clean or replace regularly to maintain suction



### HEPA FILTER HF10 – Replace within 6 months



### BRUSH ROLL – Clean monthly



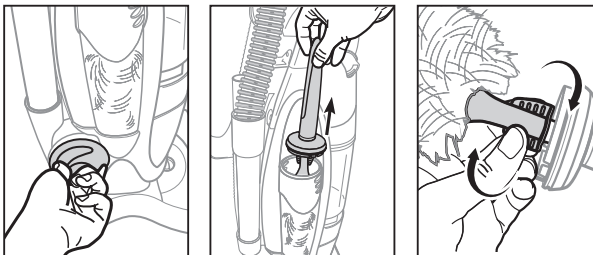
# How to Use Accessories

Handle must be in upright position to ensure that brush roll is lifted off the floor.  
Make sure brush roll switch in OFF (O) position before using accessories.  
Replace hose end into duster chamber after using accessories.

## Telescopic Self-Cleaning Duster (on some models)

Use for furniture, blinds, pictures and high-reach areas. Can be used in short or extended positions.

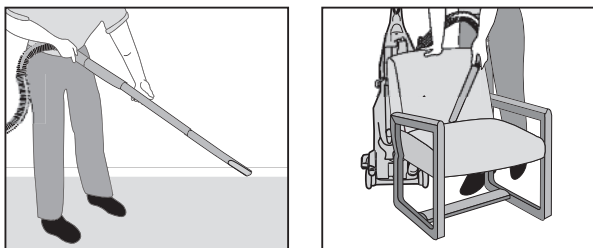
- 1) **Activate static charge:** Push power switch (I) on and turn activation knob for 10 seconds to clean or charge duster.
- 2) Turn vacuum off and remove duster from cleaning chamber.
- 3) **Short position:** Dust low surfaces.
- 4) **Extended position:** Turn twist tabs to extend. Push firmly to collapse and turn to lock.



## Combination Crevice Tool and Extension Wand

Baseboards, corners & between cushions

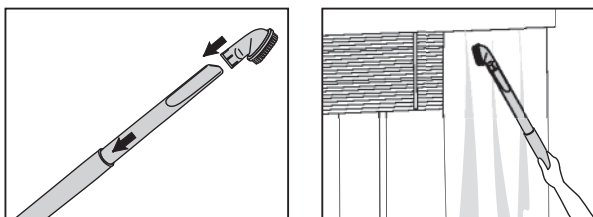
- 1) Grasp crevice tool near ridges and pull apart.
- 2) Turn ridge end to center.
- 3) Push crevice tool into wand and place on end of hose.



## Dusting Brush

Furniture, drapes, blinds, bookshelves, lampshades and vents.

- 1) Remove hose from hose retainer from back of vacuum.
- 2) Place dusting brush on end of hose, wand or crevice tool.



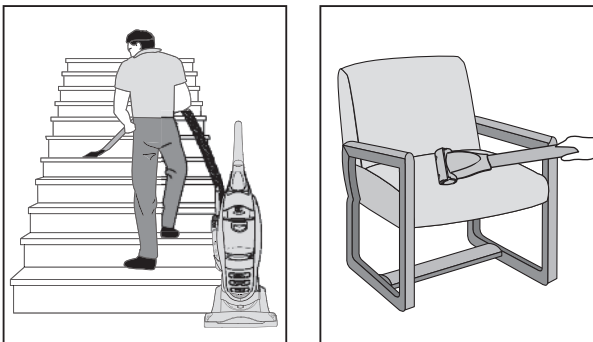
## Turbo Nozzle and Stair Hose

(with some models or available for purchase)  
Use for furniture and stairs.

**Make sure vacuum is below you, pushed against the bottom step.**

- 1) If model has additional stair hose, attach to end of wand.
- 2) Attach turbo nozzle to the end of wand or hose.

NOTE: Hose length can be increased by releasing the hose from the hose retainer on back of unit. Reposition hose inside hose retainer after using accessories.



ENGLISH



# How to Maintain Your Vacuum Cleaner

Make sure vacuum cleaner is turned off and power cord is unplugged

## Maintain Brush Roll



Motor can become hot with normal use.

Do not remove end caps. Remove hair and threads from brush roll periodically.



## Check Cogged Belt. Replace if worn, cut or out of shape

Avoid touching the motor shaft when checking brush roll or belt.

### How to replace brush roll or belt

- 1) Use handle release to lower handle flat onto floor. Turn vacuum over on its backside and remove 4 screws (Fig. 1).
- 2) Turn vacuum over to front side and remove brush roll cover (Fig. 2).
- 3) Remove brush roll and belt (Fig. 3).
- 4) Thread new belt around motor shaft and then the brush roll (Fig. 4).
- 5) Insert left end of brush roll first and then the right end (Fig. 5).
- 6) Rotate brush roll 2 turns to center belt.
- 7) Replace brush roll cover (Fig. 2). Turn vacuum over on its backside.
- 8) Replace screws **3** & **4** closest to the brush roll first. Then replace screws **1** & **2** (Fig. 6).

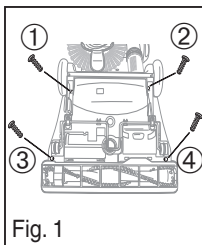


Fig. 1

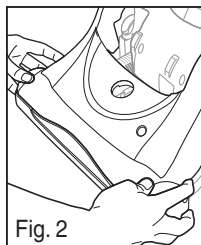


Fig. 2

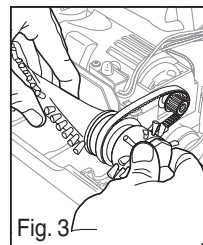


Fig. 3

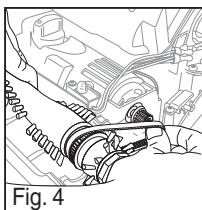


Fig. 4

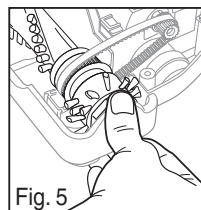


Fig. 5

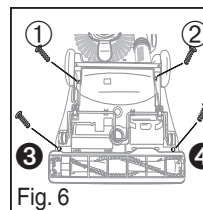


Fig. 6



## Check Brush Roll Light Turn vacuum off and unplug if indicator light turns on.

- 1) Remove debris that caused the brush roll motor to stall (Fig. 7).

### Brush Roll Reset Button

- 1) Press reset button on the side of the brush roll cover to reset motor (Fig. 8).
- 2) Press top and bottom switches ON (1) and lower handle to vacuum carpet (Fig. 9).

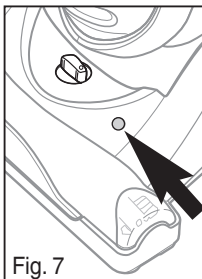


Fig. 7

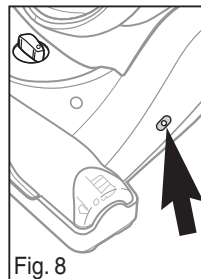


Fig. 8

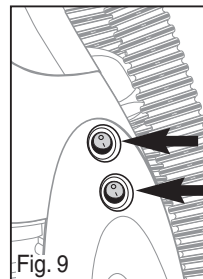


Fig. 9



## Change Light Bulb

Make sure vacuum is turned off and power cord is unplugged.

- 1) Lower handle to floor and remove HEPA filter.
- 2) Unscrew the lens and remove old bulb. Replace with bulb rated 12v., 10w., Type 904 (Fig. 10).
- 3) Push in new bulb, replace lens cover and replace screw (Fig. 11).
- 4) Replace HEPA filter and return to upright position.

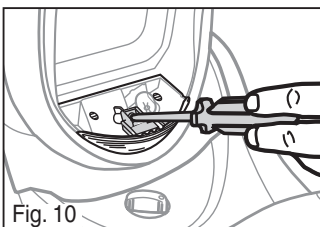


Fig. 10

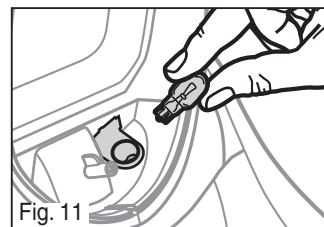


Fig. 11





## Maintain Filters

Clean or replace filters regularly to maintain suction (see filter maintenance schedule on page 2).

## How to Clear a Blockage

Make sure vacuum is turned off and power cord is unplugged.

### Hose Blockage

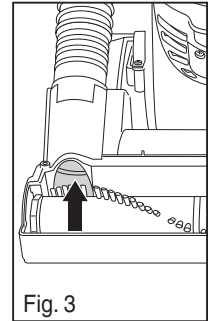
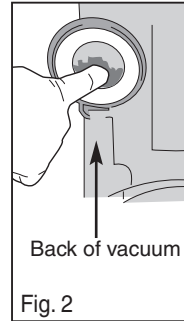
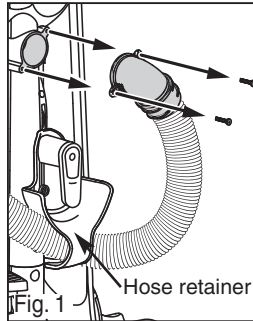
Loosen lower end of hose and pull hose retainer out to remove hose. Flex hose to loosen any blockage (Fig. 1).

### Hose Connector

Remove dust cup. Use finger to remove debris from hose connector opening (Fig. 2).

### Base Hose

Remove brush roll cover. See page 4. Clear blockage from base hose and check for debris in brush roll (Fig. 3).



## The Eureka Limited Warranty

Eureka warrants this vacuum cleaner to be free from defects in material and workmanship for a term of two years for normal household use. Warranty is granted only to the original purchaser and members of immediate household.

This warranty is good for two years from the date of purchase only when the vacuum cleaner is used in the accordance with Eureka operating instructions. Note: refurbished or remanufactured products have a one year limited warranty.

### This Warranty Does Not Cover

- Parts of the vacuum that require replacement under normal use such as disposable dust bags, filters, drive belts, light bulbs, brush roll, bristles, impellers and cleaning.
- Damages or malfunctions caused by negligence, abuse, and use not in accordance with the Owner's Guide.
- Defects or damages caused by unauthorized service or the use of other than Genuine Eureka, ARM & HAMMER™ and Filtrete™ by 3M parts.

### What Eureka Will Do

Eureka will, at its option, repair or replace a defective vacuum or vacuum part that is covered by this warranty. As a matter of warranty policy, **Eureka will not refund the consumer's purchase price.**

### Warranty Registration

Please fill out and return the warranty registration card accompanying your vacuum.

### Obtaining Warranty Service

To obtain warranty service you must return the vacuum or vacuum part along with "proof of purchase" to any Eureka Authorized Warranty Station. For Eureka Authorized Warranty Station or Service Information, visit

[www.eureka.com](http://www.eureka.com), write or telephone toll free:

**USA: 1-800-282-2886**  
Electrolux Home Care  
North America Service Division  
P.O. Box 3900  
Peoria, IL 61612

**Mexico: (55) 5343-4384**  
Electrolux Home Care

**Canada: 1-800-282-2886**  
Electrolux Home Care  
North America Service Division  
5855 Terry Fox Way  
Mississauga, Ontario L5E 3E4

### Obtaining Warranty Service Outside Your Community

You must pay the shipping charges to the Eureka Authorized Warranty Station.

**Return Shipping Charges** will be paid by the Warranty Station. When returning parts for repair, please include the model, type and serial number located on the rating plate on the lower backside of the vacuum.

### Further Limitations and Exclusions

Any warranty that may be implied in connection with your purchase or use of the vacuum, including any warranty of Merchantability or any warranty for Fitness For A Particular Purpose is limited to the duration of this warranty. Some states do not allow limitations on how long an implied warranty lasts, so the above limitations may not apply to you.

Your relief for the breach of this warranty is limited to the relief expressly provided above. In no event shall the manufacturer be liable for any consequential or incidental damages you may incur in connection with your purchase or use of the vacuum.

Some states do not allow the exclusion or limitation of incidental or consequential damages, so the above limitation or exclusion may not apply to you.


This warranty gives you specific legal rights. You may also have other rights, which may vary by state.

The ARM & HAMMER name is a trademark of Church and Dwight Co., Inc. 3M and Filtrete are trademarks of 3M Company, used by Electrolux Home Care Products, Inc. under license.

## Thermal Cut-Off

This vacuum cleaner has a special thermostat that protects the vacuum in case of motor overheating. If the vacuum suddenly shuts off, push the power switch to off (O) and unplug the vacuum. Check the vacuum for a possible source of overheating such as a full dust cup, blocked hose or clogged filter. If these conditions are found, fix them and wait at least 30 minutes before attempting to use the vacuum. After the 30 minute period, plug the vacuum back in and turn on the switch. If the vacuum still does not work, take it to a Eureka authorized service center for repair or call 1-800-282-2886.

## Problem Solving

 **Make sure vacuum is turned off and power cord is unplugged.**

Problem	Cause	Solution
<b>Motor will not start.</b>	Power plug	<ul style="list-style-type: none"> <li>• Push plug securely into outlet.</li> <li>• Try another outlet.</li> <li>• Check circuit breaker.</li> </ul>
	Power switch	<ul style="list-style-type: none"> <li>• Turn power switch to on ( I ).</li> </ul>
	Thermal cut-off	<ul style="list-style-type: none"> <li>• See above.</li> </ul>
<b>Vacuum does not clean carpet or bare floor.</b>	Dust cup and filter	<ul style="list-style-type: none"> <li>• Empty dust cup, clean and/or change filter.</li> <li>• Clean or replace filters regularly to maintain suction. Page 2</li> <li>• If picking up fine dust, the dust cup may not look full, but a fine substance tends to reduce suction when it blocks air flow through the filter and screen. Refer to page 2 for filter maintenance. Make sure filter, screen and dust cup are installed properly.</li> </ul>
	Belt	<ul style="list-style-type: none"> <li>• Replace a worn, cut or out of shape belt. Page 4</li> </ul>
	Hose	<ul style="list-style-type: none"> <li>• Flex hose and remove debris. Page 5</li> </ul>
	Bare floor setting	<ul style="list-style-type: none"> <li>• Turn height adjustment knob to bare floor position and make sure brush roll switch is in off (O) position.</li> </ul>
	Carpet height setting	<ul style="list-style-type: none"> <li>• Turn height adjustment knob to another position. Make sure power and brush roll switches are on ( I ).</li> </ul>
<b>No suction at the end of hose.</b>	Dust cup and filter	<ul style="list-style-type: none"> <li>• Empty dust cup, clean and/or change filter.</li> <li>• Clean or replace filters regularly to maintain suction. Page 2</li> <li>• If picking up fine dust, the dust cup may not look full, but a fine substance tends to reduce suction when it blocks air flow through the filter and screen. Refer to page 2 for filter maintenance. Make sure filter, screen and dust cup are installed properly.</li> </ul>
	Filter screen	<ul style="list-style-type: none"> <li>• (Located inside dust cup). Check &amp; clean debris to maintain full air flow. Page 2</li> </ul>
	Hose	<ul style="list-style-type: none"> <li>• Flex hose and remove debris. Page 5</li> </ul>
<b>Vacuum is hard to push.</b>	Vacuum height setting	<ul style="list-style-type: none"> <li>• Adjust knob to a higher position.</li> </ul>
	Belt	<ul style="list-style-type: none"> <li>• Replace a worn, cut or out of shape belt. Page 4</li> </ul>
<b>Brush roll will not turn.</b>	Brush roll switch	<ul style="list-style-type: none"> <li>• Press brush roll switch to on ( I ) position.</li> </ul>
	Belt	<ul style="list-style-type: none"> <li>• Remove debris from brush roll. Replace broken, stretched or worn belt. Page 4</li> </ul>
	Check brush roll light	<ul style="list-style-type: none"> <li>• If light is on, remove debris from around brush roll. Page 4</li> </ul>
	Brush roll reset button	<ul style="list-style-type: none"> <li>• Press reset button. Press top and bottom power switches on ( I ) and lower handle. Page 4</li> </ul>



## Free Manuals Download Website

<http://myh66.com>

<http://usermanuals.us>

<http://www.somanuals.com>

<http://www.4manuals.cc>

<http://www.manual-lib.com>

<http://www.404manual.com>

<http://www.luxmanual.com>

<http://aubethermostatmanual.com>

Golf course search by state

<http://golfingnear.com>

Email search by domain

<http://emailbydomain.com>

Auto manuals search

<http://auto.somanuals.com>

TV manuals search

<http://tv.somanuals.com>