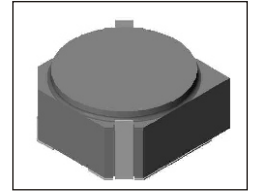


SMT Power Inductor

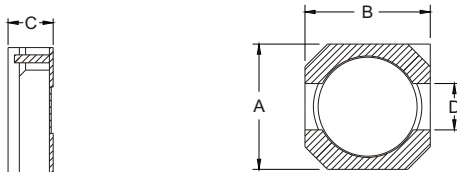
SIL530 Type

Features

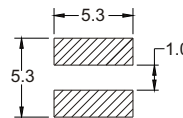
- RoHS compliant.
- Magnetically shielded
- Ideal for power source circuits, DC-DC converter, DC-AC inverters inductor application.
- In addition to the standard versions shown here, customized inductors are available to meet your exact requirements.



Mechanical Dimension:



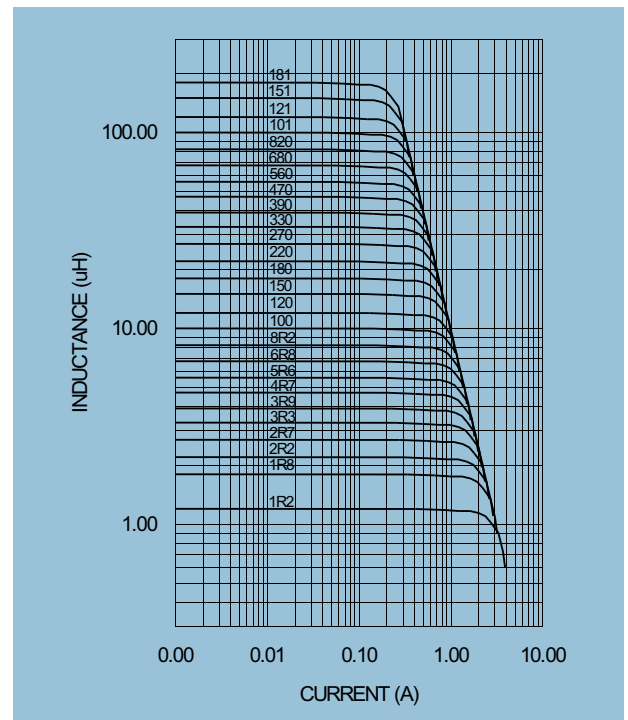
RECOMMENDED PAD PATTERNS



UNIT:mm/inch
 A = 5.0 / 0.197 Max.
 B = 5.0 / 0.197 Max.
 C = 3.0 / 0.118 Max.
 D = 1.5±0.1 / 0.059±0.004

Electrical Characteristics: 25°C, 100KHz, 0.1V

PART NO.	L ¹ (uH)	DCR (Ω) MAX	I _{rated} ² (Adc)
SIL530B - 1R1	1.1	0.0250	5.00
SIL530 - 1R2	1.2	0.0236	2.56
SIL530A - 1R2	1.2	0.0250	3.80
SIL530 - 1R8	1.8	0.0275	2.20
SIL530 - 2R2	2.2	0.0313	2.04
SIL530B - 2R2	2.2	0.0350	3.30
SIL530 - 2R7	2.7	0.0433	1.60
SIL530 - 3R3	3.3	0.0492	1.57
SIL530B - 3R3	3.3	0.0480	2.70
SIL530 - 3R9	3.9	0.0648	1.44
SIL530 - 4R7	4.7	0.0720	1.32
SIL530B - 4R7	4.7	0.0650	2.30
SIL530 - 5R6	5.6	0.1009	1.17
SIL530 - 6R8	6.8	0.1089	1.12
SIL530A - 6R8	6.8	0.0750	1.50
SIL530B - 6R8	6.8	0.0800	2.00
SIL530 - 8R2	8.2	0.1175	1.04
SIL530 - 100	10.0	0.1283	1.00
SIL530A - 100	10.0	0.1100	1.20
SIL530B - 100	10.0	0.1200	1.50
SIL530 - 120	12.0	0.1316	0.84
SIL530 - 150	15.0	0.1490	0.76
SIL530 - 180	18.0	0.1660	0.72
SIL530 - 220	22.0	0.2350	0.70
SIL530B - 220	22.0	0.2600	1.00
SIL530 - 270	27.0	0.2610	0.58
SIL530 - 330	33.0	0.3780	0.56
SIL530 - 390	39.0	0.3837	0.50
SIL530 - 470	47.0	0.5870	0.48
SIL530A - 470	47.0	0.4400	0.62
SIL530B - 470	47.0	0.4900	0.75
SIL530 - 560	56.0	0.6245	0.41
SIL530 - 680	68.0	0.6990	0.35
SIL530 - 820	82.0	0.9148	0.32
SIL530 - 101	100.0	1.0200	0.29
SIL530 - 121	120.0	1.2700	0.27
SIL530 - 151	150.0	1.3500	0.24
SIL530 - 181	180.0	1.5400	0.22



1. Tolerance of inductance : ± 30%.
2. I_{rated} is the DC current which cause the inductance drop less than 35% of its nominal inductance without current and the surface temperature of the part increase less than 45°C.
3. Operating temperature: -20°C to 105°C (including self-temperature rise).



DELTA ELECTRONICS, INC.

(TAOYUAN PLANT CPBG) 252, SAN YING ROAD, KUEISAN INDUSTRIAL ZONE, TAOYUAN SHIEN, 333, TAIWAN, R.O.C.

TEL: 886-3-3591968; FAX: 886-3-3591991

http://www.deltawww.com

Free Manuals Download Website

<http://myh66.com>

<http://usermanuals.us>

<http://www.somanuals.com>

<http://www.4manuals.cc>

<http://www.manual-lib.com>

<http://www.404manual.com>

<http://www.luxmanual.com>

<http://aubethermostatmanual.com>

Golf course search by state

<http://golfingnear.com>

Email search by domain

<http://emailbydomain.com>

Auto manuals search

<http://auto.somanuals.com>

TV manuals search

<http://tv.somanuals.com>