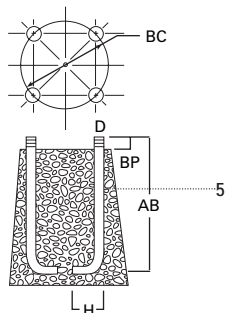
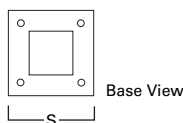
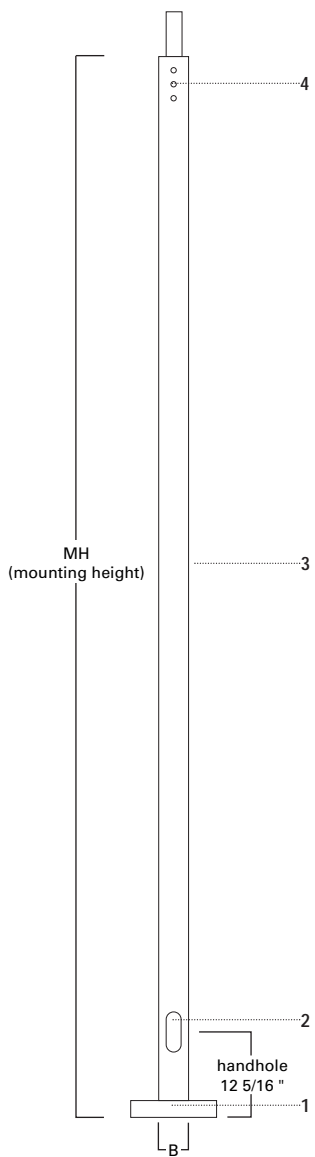


# SSS SQUARE STRAIGHT STEEL

10'—39' MOUNTING HEIGHT



## SPECIFICATION FEATURES

- 1 ··· ASTM Grade steel base plate with ASTM A366 base cover.
- 2 ··· Hand hole assembly 3" x 5" on 5" and 6" pole; and 2" x 4" on 4" pole.
- 3 ··· ASTM A500 grade "B" steel shaft. Shot blasted and painted with polyester powder coat.
- 4 ··· Drilled or Tenon (specify).
- 5 ··· Anchor bolt per ASTM A576 with (2) nuts, (2) flat washer, and (1) lock washer. Nuts, washers and threaded portion of bolt are hot dip galvanized. 3" hook for 3/4" bolt. 4" hook for 1" bolt.

## FOUR BOLT ANCHORAGE [See ordering information]

- BC=Bolt Circle
- BP=Bolt Projection
- AB=Bolt Dimensions
- D=Bolt Diameter
- H=Bolt Dimensions

## FINISH COLORS [See ordering information]

- F=Dark Bronze
- G=Galvanized
- V=Grey
- W=White
- Y=Black

**WARNING:** THE USE OF UNAUTHORIZED ACCESSORIES SUCH AS BANNERS, SIGNS OR PENNANTS FOR WHICH THE POLE WAS NOT DESIGNED FOR VOIDS THE COOPER LIGHTING WARRANTY AND MAY RESULT IN POLE FAILURE CAUSING SERIOUS INJURY OR PROPERTY DAMAGE. COOPER LIGHTING'S POLE WARRANTY IS ALSO VOIDED IF LUMINAIRE IS NOT INSTALLED AT TIME OF POLE INSTALLATION.

ORDERING INFORMATION

SAMPLE NUMBER: SSS5A20SFM1XG

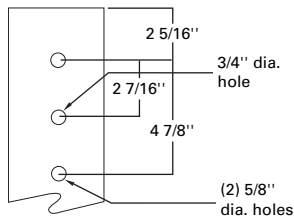
Square	Straight	Steel	Shaft <sup>3</sup> Size	Wall Thickness	Mounting Height (ft.)	Base Type	Finish	Fixture Mounting & Type	No. & Location of Arms	Arm Lengths	Accessories (Ground Lug)
S	S	S	5	A	20	S	F	M	1	X	G

Mtg. Height	Catalog <sup>1,2</sup> Number	Wall Thickness	Base Square (In.)	Bolt Circle Dia. (In.)	Bolt Proj. (In.)	Shaft Size (In.)	Anchor Bolt Dia. & Length (In.)	Net. Wt. (Lbs.)	EPA (Sq. Ft.) <sup>4</sup> At Pole Top			EPA (Sq. Ft.) <sup>4</sup> 2' Above Pole Top			Load—Include Bracket (Lbs.)		Max. Fixture Lug
									70	80	90	100	70	80	90	100	
10	SSS4A10SF	.120	10 1/2	11.0	4 1/2	4	3/4 x 25 x 3	96	39.8	29.9	23.2	18.4	33.0	24.8	19.3	15.3	150
15	SSS4A15SF	.120	10 1/2	11.0	4 1/2	4	3/4 x 25 x 3	133	19.6	14.4	10.8	8.2	17.2	12.7	9.5	7.3	150
20	SSS4A20SF	.120	10 1/2	11.0	4 1/2	4	3/4 x 25 x 3	152	12.9	9.1	6.5	4.6	11.7	8.2	5.9	4.2	200
25	SSS4A25SF	.120	10 1/2	11.0	4 1/2	4	3/4 x 25 x 3	208	8.7	5.6	3.6	2.1	8.0	5.2	3.3	2.0	200
20	SSS5A20SF	.120	10 1/2	11.0	4 1/2	5	3/4 x 25 x 3	202	21.9	15.7	11.6	8.5	19.9	14.3	10.5	7.7	200
25	SSS5A25SF	.120	10 1/2	11.0	4 1/2	5	3/4 x 25 x 3	248	15.5	10.5	7.2	4.8	14.3	9.8	6.6	4.4	200
30	SSS5A30SF	.120	10 1/2	11.0	4 1/2	5	3/4 x 25 x 3	293	8.2	4.6	2.1	--	7.7	4.3	2.0	--	300
35	SSS5M35SF	.188	10 1/2	11.0	4 1/2	5	3/4 x 25 x 3	480	11.8	7.1	3.8	1.5	11.1	6.6	3.6	1.4	300
25	SSS6A25SF	.120	12 1/2	12.5	5	6	1 x 36 x 4	295	24.1	16.8	12.0	8.5	22.2	15.6	11.1	7.8	200
30	SSS6A30SF	.120	12 1/2	12.5	5	6	1 x 36 x 4	347	14.0	8.7	5.0	2.5	13.1	8.2	4.7	2.3	300
30	SSS6M30SF	.188	12 1/2	12.5	5	6	1 x 36 x 4	505	26.4	18.1	12.5	8.4	24.7	16.9	11.6	7.9	300
35	SSS6M35SF	.188	12 1/2	12.5	5	6	1 x 36 x 4	584	19.7	12.7	7.9	4.4	18.6	12.0	7.5	4.2	300
35	SSS6X35SF	.250	12 1/2	12.5	5	6	1 x 36 x 4	696	28.9	19.7	13.4	8.9	8.7	18.6	12.7	8.4	300
39	SSS6M39SF	.188	12 1/2	12.5	5	6	1 x 36 x 4	647	15.4	9.1	4.8	1.8	14.6	8.7	4.6	1.7	300
39	SSS6X39SF	.250	12 1/2	12.5	5	6	1 x 36 x 4	822	23.5	15.4	9.8	5.7	22.4	14.6	9.3	5.4	300

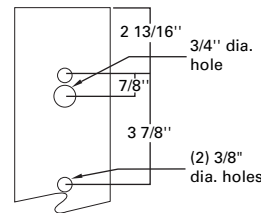
NOTES: 1 Catalog number includes pole with anchor bolts with double nuts (BEFORE INSTALLING ANCHOR BOLTS MAKE SURE PROPER ANCHOR BOLT TEMPLATE IS OBTAINED FROM COOPER LIGHTING).  
 2 Tenon size or machining for rectangular arms must be specified. Hand hole is located 180° from single arm.  
 3 Shaft size, base plate, anchor bolts and projections may vary slightly—all dimensions nominal.  
 4 EPA's based on shaft properties with wind normal to flat. EPA's calculated using base wind velocity as indicated plus 30% gust factor.

DRILLING PATTERN

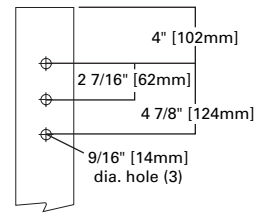
Type "M" [RCL, Landau, Galleria and Vision]



Type "E" [Concourse III]



Type "Z" [Credenza and Cirrus]



MACHINING FOR RECTANGULAR ARMS [Add as suffix]

Designation Letter & Number	Designation Letter & Number	Designation Letter & Number	Quantity & Location
M1	E1	Z1	Single
M2	E2	Z2	2 @ 180°
M3	E3	Z3	3 @ 120°
M4	E4	Z4	4 @ 90°
M5	E5	Z5	2 @ 90°
M6	E6	Z6	3 @ 90°
M7	E7	Z7	2 @ 120°

NOTES: Refer to Fixture Drilling Options on page 160.

MOUNTING OPTIONS [Add as suffix]

Fixed Tenon	Designation Number	O.D. (In.)	Length (In.)
	1	2 3/8	3 1/2
	2	2 3/8	4
	3	3 1/2	5
	9	3	4

ACCESSORIES

- A=1/2" tapped hub<sup>1</sup>
- B=3/4" tapped hub<sup>1</sup>
- C=Convenience outlet<sup>2</sup>
- G=Grounding lug (max. wire #8 AWG)
- H=Additional hand hole and cover—  
12" below pole top—90° from hand hole.

NOTES: 1 Location is 3' above base—90° from hand hole.  
 2 Outlet is located 4' above base and on same side of pole as hand hole, unless specified otherwise. Receptacle not included, provision only.

NOTE: Specifications and dimensions subject to change without notice.

## Free Manuals Download Website

<http://myh66.com>

<http://usermanuals.us>

<http://www.somanuals.com>

<http://www.4manuals.cc>

<http://www.manual-lib.com>

<http://www.404manual.com>

<http://www.luxmanual.com>

<http://aubethermostatmanual.com>

Golf course search by state

<http://golfingnear.com>

Email search by domain

<http://emailbydomain.com>

Auto manuals search

<http://auto.somanuals.com>

TV manuals search

<http://tv.somanuals.com>