



# USER GUIDE

## USB 2.0 ALUMINUM HUB

Model: 29508 (4-Port) / 29509 (7-Port)

# TABLE OF CONTENTS

Introduction.....	2
Features.....	3
System Requirements.....	4
Package Contents.....	5
Device Installation-Connecting the Hub.....	6
Device Installation-Windows 98SE.....	7
Technical Specifications.....	11
Cables To Go One Year Warranty.....	12
Important Safety Information.....	13

# INTRODUCTION

Thank you for purchasing the USB 2.0 Aluminum Hub. The USB 2.0 Aluminum Hub conveniently adds high speed USB 2.0 ports to your desktop or notebook computer. The slim form factor saves space while the port placement and hard-mountable metal base keep the hub in place even when several USB devices are connected. The hub easily slides out of the base making it convenient to travel with as well.

To ensure proper operation the USB 2.0 Aluminum Hub must utilize the included power supply. Add additional hubs to support up to 127 devices. Whether you are downloading or transferring spreadsheets, MP3 files, digital pictures, or video streams- the USB 2.0 Aluminum Hub will make connecting several high speed USB 2.0 devices hassle-free. **We recommend that you read this manual thoroughly and retain for future reference.**

# FEATURES

- ❖ One upstream port and four (#29508) or seven (#29509) downstream ports
- ❖ Removable aluminum base can be hard-mounted to your desk
- ❖ Slim design saves space on your desktop Connect up to 127 USB devices by daisy-chaining hubs
- ❖ Fully compatible with USB 2.0 Specification
- ❖ Fully backward Compatible with USB 1.1 Specification
- ❖ Supports transfer rates of up to 480 Mbps
- ❖ AC power supply included
- ❖ Downstream ports have automatic connect and speed detection function plus over-current protection with auto recovery
- ❖ Supports Windows 98SE/2000/ME/XP/Vista/7 and Mac OS X or higher

# SYSTEM REQUIREMENTS

- ❖ USB 1.1 or 2.0 enabled computer with one free USB port
- ❖ Windows<sup>®</sup> 98SE/Me/2000/XP/Vista/7 and Mac<sup>®</sup> OS 8.6 or later

# PACKAGE CONTENTS

## **Part #29508**

- ❖ 4-Port USB 2.0 Aluminum Hub
- ❖ Hard-mountable metal base
- ❖ Two self-tapping screws for mounting base
- ❖ 3ft (approx.) USB 2.0 A male to USB Mini-B male cable
- ❖ DC 5V, 1 A Power Supply
- ❖ User Guide

## **Part #29509**

- ❖ 7-Port USB 2.0 Aluminum Hub
- ❖ Hard-mountable metal base
- ❖ Two self-tapping screws for mounting base
- ❖ 3ft (approx.) USB 2.0 A male to USB Mini-B male cable
- ❖ DC 5V, 2.5 A Power Supply
- ❖ User Guide

## DEVICE INSTALLATION-CONNECTING THE HUB

1. Connect the AC power adapter to the **USB 2.0 Aluminum Hub** and then to an AC wall outlet.
2. Connect the USB 2.0 cable's Mini-B connector to the **USB 2.0 Aluminum Hub**.
3. Connect the USB 2.0 cable's A connector to an available USB 2.0 port on your computer.
4. Connect your devices to the available ports on the **USB 2.0 Aluminum Hub**.

**Note:**

**No driver installation is needed for Windows ME/2000/XP/Vista/7 or the listed compatible Mac operating systems.**

# DEVICE INSTALLATION-WINDOWS 98SE

## INSTALLING THE DRIVERS

### WINDOWS 98SE

After you have connected the device, the *New Hardware Wizard* window will appear on your screen.

1. Click **Next** to continue.



2. Select **Search for the best driver for your device.** Click **Next** to continue.





## DEVICE INSTALLATION-WINDOWS 98SE

3. Leave all fields unchecked and click **Next** to initiate a search for the suitable driver for the device.



4. Click **Next** to continue.



## DEVICE INSTALLATION-WINDOWS 98SE

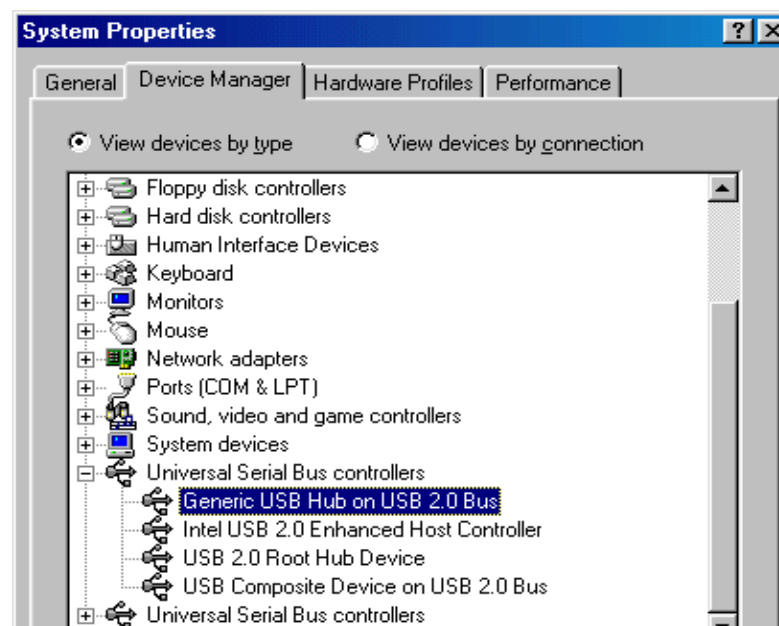
5. Click **Finish** to complete the installation.



## DEVICE INSTALLATION-WINDOWS 98SE

### VERIFY INSTALLATION

1. Open the Control Panel.
2. Double-click **System Properties**.
3. Click the *Device Manager* tab.
4. Double-click **Universal Serial Bus controllers** and look for **Generic USB Hub on USB 2.0 Bus**. If that appears on the list, you have properly installed the device. If it does not appear on the list, please try the installation again.



# TECHNICAL SPECIFICATIONS

<b>Part Number</b>	<b>29508</b>	<b>29509</b>
<b>Complies USB Rev.</b>	<b>Ver. 2.0</b>	
<b>Connectors</b>	<b>USB Type mini-B Female x 1 USB Type A Female x 4</b>	<b>USB Type mini-B Female x 1 USB Type A Female x 7</b>
<b>Housing</b>	<b>Aluminum</b>	
<b>Product Dimensions</b>	<b>3.75 x 1.5 x 1 (in.)</b>	<b>4.5 x 1.5 x 1 (in.)</b>
<b>Product Weight</b>	<b>0.25 lbs</b>	<b>0.30 lbs</b>
<b>Power Supply Output</b>	<b>5V 1A</b>	<b>5V 2.5A</b>
<b>USB Cable Version</b>	<b>2.0</b>	
<b>USB Cable Length</b>	<b>3 ft</b>	
<b>USB Cable Connectors</b>	<b>USB A Male to USB mini-B male</b>	

# CABLES TO GO® ONE YEAR WARRANTY

At Cables To Go, we want you to be totally confident in your purchase. That is why we offer a one year warranty on this device. If you experience problems due to workmanship or material defect for the duration of this warranty, we will repair or replace this device. To request a Return Merchandise Authorization (RMA) number, contact customer service at 1-800-506-9606 or [www.cablestogo.com](http://www.cablestogo.com).



Cables To Go  
3555 Kettering Blvd.  
Moraine, OH 45439  
1-800-506-9607  
[www.cablestogo.com](http://www.cablestogo.com)

# IMPORTANT SAFETY INFORMATION

**!** Do not plug the unit in any outlet that does not have enough current to allow the device to function. Refer to the specifications in this manual for power level of the unit.

**! Liquid:**

If this unit or its corresponding power adapter has had liquid spilled on or in it, do not attempt to use the unit. Do not attempt to use this product in an outdoor environment as elements such as rain, snow, hail, etc. can damage the product.

**!** In case of a storm, it is recommended that you unplug this device from the outlet.

**!** Avoid placing this product next to objects that produce heat such as portable heaters, space heaters, or heating ducts.

**! THERE ARE NO USER SERVICEABLE PARTS**

Do not attempt to open this product and expose the internal circuitry. If you feel that the product is defective, unplug the unit and refer to the warranty information section of this manual.

©2010 Cables To Go. Microsoft , XP, and Vista are either registered trademarks or trademarks of Microsoft Corporation in the United States and/or other countries. Mac is either a registered trademark or trademark of Apple. This product is not endorsed or manufactured by Microsoft Corporation or Apple.



For more information on this product or to check for updated drivers, manuals or frequently asked questions please visit our website.

[www.cablestogo.com](http://www.cablestogo.com)



VER. 2.0.07.07.09



## Free Manuals Download Website

<http://myh66.com>

<http://usermanuals.us>

<http://www.somanuals.com>

<http://www.4manuals.cc>

<http://www.manual-lib.com>

<http://www.404manual.com>

<http://www.luxmanual.com>

<http://aubethermostatmanual.com>

Golf course search by state

<http://golfingnear.com>

Email search by domain

<http://emailbydomain.com>

Auto manuals search

<http://auto.somanuals.com>

TV manuals search

<http://tv.somanuals.com>