



Boston Horizon MM 220

Computer Speaker System



Important Safety Instructions



This symbol if found on the apparatus indicates hazards arising from dangerous voltages.




WARNING! To reduce the risk of fire or electric shock, do not expose this apparatus to rain or moisture.



This symbol if found on the apparatus indicates the user should read all safety statements found in the user manual.



This symbol if found on the apparatus indicates double insulation.

1. Read these instructions.
2. Keep these instructions.
3. Heed all warnings.
4. Follow all instructions.
5. Do not use this apparatus near water.
6. Clean only with dry cloth.
7. Do not block any ventilation openings. Install in accordance with the manufacturer's instructions.
8. Do not install near any heat sources such as radiators, heat registers, stoves, or other apparatus (including amplifiers) that produce heat.
9. Do not defeat the safety purpose of the polarized or grounding-type plug. A polarized plug has two blades with one wider than the other. A grounding type plug has two blades and a third grounding prong. The wide blade or the third prong are provided for your safety. If the provided plug does not fit into your outlet, consult an electrician for replacement of the obsolete outlet.
10. Protect the power cord from being walked on or pinched particularly at plugs, convenience receptacles, and the point where they exit from the apparatus.
11. Only use attachments/accessories specified by the manufacturer.
12. Use only with the cart, stand, tripod, bracket, or table specified by the manufacturer, or sold with the apparatus. When a cart is used, use caution when moving the cart/apparatus combination to avoid injury from tip-over. 
13. Unplug this apparatus during lightning storms or when unused for long periods of time.
14. Refer all servicing to qualified service personnel. Servicing is required when the apparatus has been damaged in any way, such as power supply cord or plug is damaged, liquid has been spilled or objects have fallen into the apparatus, the apparatus has been exposed to rain or moisture, does not operate normally, or has been dropped.
15. Maintain a minimum distance of 50 mm around the front, rear and sides of the apparatus for sufficient ventilation. The ventilation should not be impeded by covering the ventilation openings or placing on or around the apparatus items such as newspapers, table-cloths, curtains, etc.
16. No naked flame sources, such as lighted candles, should be placed on the apparatus.
17. The apparatus shall not be exposed to dripping or splashing. No objects filled with liquids, such as vases, shall be placed on the apparatus.
18. Either the power inlet connector on the rear of the apparatus or the power plug at the wall must remain accessible, to be able to disconnect power from the apparatus.
19. To completely disconnect this apparatus from the AC Mains, disconnect the power supply cord plug from the AC receptacle.
20. The mains plug of the power supply cord shall remain readily operable.
21. **CAUTION** – These servicing instructions are for use by qualified service personnel only. To reduce the risk of electric shock, do not perform any servicing other than that contained in the operating instructions unless you are qualified to do so.



Specifications

MM 220

System Power:	80 watts dynamic output power
Drivers:	Dual 2" (51mm) high-output high excursion drivers with single passive radiator
Tweeter:	½" (13mm)
Dimensions: (H x W x D)	11⅜ x 3¼ x 3¼" (289 x 83 x 83mm)
Weight:	6.17 lbs (2.8kg)

Introduction

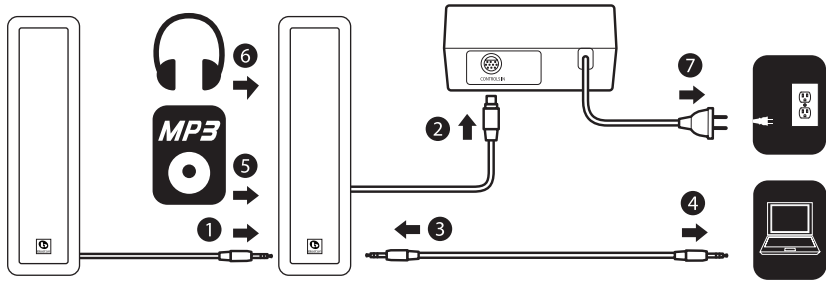
Thank you for choosing Boston Acoustics and congratulations on your purchase of the Horizon MM 220 Computer Speaker System. If you own other Boston products, the outstanding audio performance and ease-of-use of the MM 220 should come as no surprise. If you're new to Boston, welcome -- we think you've made a great choice, and we know you'll enjoy your computer speaker system for years to come.

Disposal

Your product is designed and manufactured with high quality materials and components, which can be recycled and reused. Please inform yourself about the local separate collection system for electrical and electronic products, including those marked by the crossed-out wheely bin symbol. Please act according to your local rules and do not dispose of your old products with your normal household waste

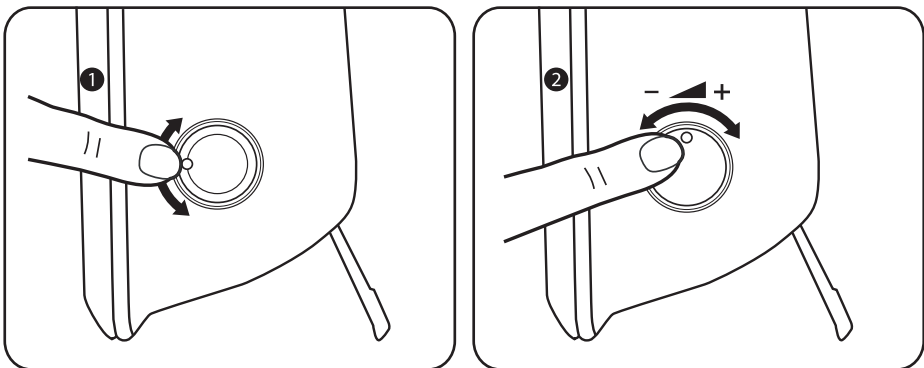


Connect



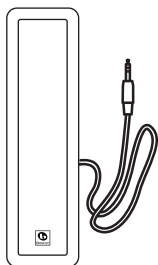
- 1 Connect the Left Speaker to the Right Speaker (port is on the back).
- 2 Connect the Right Speaker to the **Controls** port of the Adapter.
- 3 Plug the Audio Cable into the **Line In** port of the Right Speaker (port is on the back).
- 4 Plug the other end into your audio source (for example, your computer).
- 5 You can connect an auxiliary audio source to the Right Speaker. The sound of the auxiliary audio source is sent to the computer speaker system.
- 6 You can also connect headphones to the Right Speaker. The sound will be routed to your headphones. Audio through the speaker system will be muted while headphones are inserted.
- 7 Connect the Adapter to the AC power outlet.

Operation

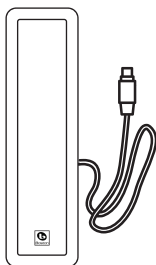


- 1 On the Right Speaker, turn the knob clockwise to switch the system on. The light on the knob will turn green.
- 2 Turn the knob clockwise to increase the volume. You can now enjoy the sound of your computer speaker system.

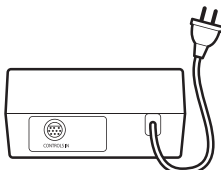
What's in the box?



Left Speaker



Right Speaker



Adapter



Audio Cable



Quick Start Guide

What else you'll need



Computer

Or



Notebook

Or



MP3 Player



Power supply



300 Jubilee Drive, Peabody, MA 01960 USA

www.bostonacoustics.com

© 2008 Boston Acoustics, Inc. Boston, Boston Acoustics, and the Boston Acoustics logo are registered trademarks and the B/A ellipse symbol is a trademark of Boston Acoustics, Inc. Specifications are subject to change without notice. 142-003253

Free Manuals Download Website

<http://myh66.com>

<http://usermanuals.us>

<http://www.somanuals.com>

<http://www.4manuals.cc>

<http://www.manual-lib.com>

<http://www.404manual.com>

<http://www.luxmanual.com>

<http://aubethermostatmanual.com>

Golf course search by state

<http://golfingnear.com>

Email search by domain

<http://emailbydomain.com>

Auto manuals search

<http://auto.somanuals.com>

TV manuals search

<http://tv.somanuals.com>