

# CHICAGO

Electric® Power Tools

## 10" RANDOM ORBIT POLISHER/WAXER WITH ERGONOMIC HANDLE

Model 43424

### ASSEMBLY AND OPERATING INSTRUCTIONS



3491 Mission Oaks Blvd., Camarillo, CA 93011  
Visit our Web site at: <http://www.harborfreight.com>

Copyright© 2003 by Harbor Freight Tools®. All rights reserved. No portion of this manual or any artwork contained herein may be reproduced in any shape or form without the express written consent of Harbor Freight Tools.

**For technical questions, please call 1-800-444-3353.**

## PRODUCT SPECIFICATIONS



Item	Description
Electrical Requirements	120 Volt / 60 Hz / Single Phase / .75 Amp
Pad Diameter	10"
Oscillations Per Minute	3,000
Orbital Design	Direct Drive
Power Switch Type	Toggle
Accessories	Waxing Bonnet (1) / Polishing Bonnet (1)
Weight	4.70 Pounds

## SAVE THIS MANUAL

You will need this manual for the safety warnings and precautions, assembly, operating, inspection, maintenance and cleaning procedures, parts list and assembly diagram. Keep your invoice with this manual. Write the invoice number on the inside of the front cover. Keep this manual and invoice in a safe and dry place for future reference.

## GENERAL SAFETY RULES

### WARNING!

**READ AND UNDERSTAND ALL INSTRUCTIONS**  
Failure to follow all instructions listed below may result in electric shock, fire, and/or serious injury.  
**SAVE THESE INSTRUCTIONS**

## WORK AREA

1. **Keep your work area clean and well lit.** Cluttered benches and dark areas invite accidents.
2. **Do not operate power tools in explosive atmospheres, such as in the presence of flammable liquids, gases, or dust.** Power tools create sparks which may ignite the dust or fumes.

3. **Keep bystanders, children, and visitors away while operating a power tool.** Distractions can cause you to lose control. Protect others in the work area from debris such as chips and sparks. Provide barriers or shields as needed.

### ELECTRICAL SAFETY

4. **Grounded tools must be plugged into an outlet properly installed and grounded in accordance with all codes and ordinances. Never remove the grounding prong or modify the plug in any way. Do not use any adapter plugs. Check with a qualified electrician if you are in doubt as to whether the outlet is properly grounded.** If the tools should electrically malfunction or break down, grounding provides a low resistance path to carry electricity away from the user.
5. **Double insulated tools are equipped with a polarized plug (one blade is wider than the other). This plug will fit in a polarized outlet only one way. If the plug does not fit fully in the outlet, reverse the plug. If it still does not fit, contact a qualified electrician to install a polarized outlet. Do not change the plug in any way.** Double insulation  eliminates the need for the three wire grounded power cord and grounded power supply system.
6. **Avoid body contact with grounded surfaces such as pipes, radiators, ranges, and refrigerators.** There is an increased risk of electric shock if your body is grounded.
7. **Do not expose power tools to rain or wet conditions.** Water entering a power tool will increase the risk of electric shock.
8. **Do not abuse the Power Cord. Never use the Power Cord to carry the tools or pull the Plug from an outlet. Keep the Power Cord away from heat, oil, sharp edges, or moving parts. Replace damaged Power Cords immediately.** Damaged Power Cords increase the risk of electric shock.
9. **When operating a power tool outside, use an outdoor extension cord marked “W-A” or “W”.** These extension cords are rated for outdoor use, and reduce the risk of electric shock.

### PERSONAL SAFETY

10. **Stay alert. Watch what you are doing, and use common sense when operating a power tool. Do not use a power tool while tired or under the influence of drugs, alcohol, or medication.** A moment of inattention while operating power tools may result in serious personal injury.

11. **Dress properly. Do not wear loose clothing or jewelry. Contain long hair. Keep your hair, clothing, and gloves away from moving parts.** Loose clothes, jewelry, or long hair can be caught in moving parts.
12. **Avoid accidental starting. Be sure the Power Switch is off before plugging in.** Carrying power tools with your finger on the Power Switch, or plugging in power tools with the Power Switch on, invites accidents.
13. **Remove adjusting keys or wrenches before turning the power tool on.** A wrench or a key that is left attached to a rotating part of the power tool may result in personal injury.
14. **Do not overreach. Keep proper footing and balance at all times.** Proper footing and balance enables better control of the power tool in unexpected situations.
15. **Use safety equipment. Always wear eye protection.** Dust mask, non-skid safety shoes, hard hat, or hearing protection must be used for appropriate conditions.

#### TOOL USE AND CARE

16. **Use clamps (not included) or other practical ways to secure and support the workpiece to a stable platform.** Holding the work by hand or against your body is unstable and may lead to loss of control.
17. **Do not force the tool. Use the correct tool for your application.** The correct tool will do the job better and safer at the rate for which it is designed.
18. **Do not use the power tool if the Power Switch does not turn it on or off.** Any tool that cannot be controlled with the Power Switch is dangerous and must be replaced.
19. **Disconnect the Power Cord Plug from the power source before making any adjustments, changing accessories, or storing the tool.** Such preventive safety measures reduce the risk of starting the tool accidentally.
20. **Store idle tools out of reach of children and other untrained persons.** Tools are dangerous in the hands of untrained users.
21. **Maintain tools with care. Keep cutting tools sharp and clean.** Properly maintained tools with a sharp cutting edge are less likely to bind and are easier to control. Do not use a damaged tool. Tag damaged tools “Do not use” until repaired.



22. **Check for misalignment or binding of moving parts, breakage of parts, and any other condition that may affect the tool's operation. If damaged, have the tool serviced before using.** Many accidents are caused by poorly maintained tools.
23. **Use only accessories that are recommended by the manufacturer for your model.** Accessories that may be suitable for one tool may become hazardous when used on another tool.

### SERVICE

24. **Tool service must be performed only by qualified repair personnel.** Service or maintenance performed by unqualified personnel could result in a risk of injury.
25. **When servicing a tool, use only identical replacement parts. Follow instructions in the “*Inspection, Maintenance, And Cleaning*” section of this manual.** Use of unauthorized parts or failure to follow maintenance instructions may create a risk of electric shock or injury.

### SPECIFIC SAFETY RULES

1. **Maintain labels and nameplates on the Polisher/Waxer.** These carry important information. If unreadable or missing, contact Harbor Freight Tools for a replacement.
2. **Always wear safety impact eye goggles and heavy work gloves when using the Polisher/Waxer.** Using personal safety devices reduce the risk for injury. Safety impact eye goggles and heavy work gloves are available from Harbor Freight Tools.
3. **Maintain a safe working environment.** Keep the work area well lit. Make sure there is adequate surrounding workspace. Always keep the work area free of obstructions, grease, oil, trash, and other debris. Do not use a power tool in areas near flammable chemicals, dusts, and vapors. Do not use this product in a damp or wet location.
4. **Make sure to read and understand all instructions and safety precautions as outlined in the manufacturer's manual for the vehicle you will wax/polish.**
5. **When using a hand-held power tool, always maintain a firm grip on the tool with both hands to resist starting torque.**
6. **Always keep the extension cord away from moving parts on the tool.**

7. **Avoid unintentional starting.** Make sure you are prepared to begin work before turning on the Polisher/Waxer.
8. **Do not force the Polisher/Waxer.** This tool will do the work better and safer at the speed and capacity for which it was designed. Do not force the rotating Pad (part #20) into the vehicle being waxed/polished. Apply moderate pressure, allowing the Pad to rotate freely without being forced.
9. **When waxing/polishing a vehicle, do not run the vehicle in an enclosed area.** Carbon monoxide is a colorless, odorless, vapor emitted from a vehicle's running engine that may cause severe injury or death if inhaled.
10. **Never lay the Polisher/Waxer down until the Rotating Pad (part #20) has come to a complete stop.** The Rotating Pad can grab the surface and pull the tool out of your control.
11. **Make sure the vehicle being waxed/polished is free from burrs and any other foreign matter which could damage the tool.**
12. **Never leave the Polisher/Waxer unattended when it is plugged into an electrical outlet.** Turn off the tool, and unplug it from its electrical outlet before leaving.
13. **Always unplug the Polisher/Waxer from its electrical outlet before performing and inspection, maintenance, or cleaning procedures.**
14.  **WARNING!** Some dust created by power sanding, sawing, grinding, drilling, and other construction activities, contain chemicals known (to the State of California) to cause cancer, birth defects or other reproductive harm. Some examples of these chemicals are: lead from lead-based paints, crystalline silica from bricks and cement or other masonry products, arsenic and chromium from chemically treated lumber. Your risk from these exposures varies, depending on how often you do this type of work. To reduce your exposure to these chemicals: work in a well ventilated area, and work with approved safety equipment, such as those dust masks that are specially designed to filter out microscopic particles. (*California Health & Safety Code 25249.5, et seq.*)
15.  **WARNING!** People with pacemakers should consult their physician(s) before using this product. Operation of electrical equipment in close proximity to a heart pacemaker could cause interference or failure of the pacemaker.

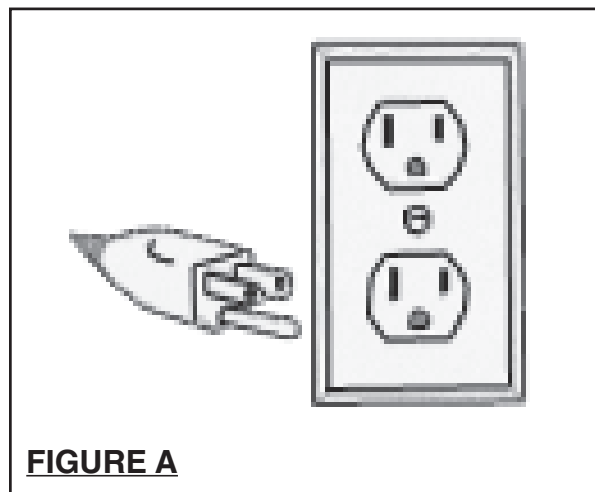
## GROUNDING

### WARNING!

Improperly connecting the grounding wire can result in the risk of electric shock. Check with a qualified electrician if you are in doubt as to whether the outlet is properly grounded. Do not modify the power cord plug provided with the tool. Never remove the grounding prong from the plug. Do not use the tool if the power cord or plug is damaged. If damaged, have it repaired by a service facility before use. If the plug will not fit the outlet, have a proper outlet installed by a qualified electrician.

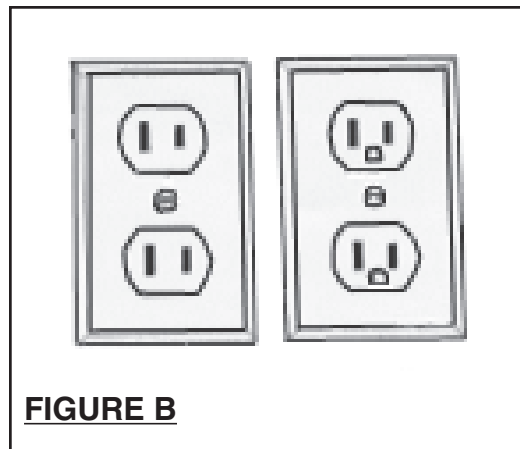
### GROUNDING TOOLS: TOOLS WITH THREE PRONG PLUGS

1. Tools marked with “Grounding Required” have a three wire cord and three prong grounding plug. The plug must be connected to a properly grounded outlet. If the tool should electrically malfunction or break down, grounding provides a low resistance path to carry electricity away from the user, reducing the risk of electric shock. **(See Figure A.)**
2. The grounding prong in the plug is connected through the green wire inside the cord to the grounding system in the tool. The green wire in the cord must be the only wire connected to the tool’s grounding system and must never be attached to an electrically “live” terminal. **(See Figure A.)**
3. Your tool must be plugged into an appropriate outlet, properly installed and grounded in accordance with all codes and ordinances. The plug and outlet should look like those in the following illustration. **(See Figure A.)**



## DOUBLE INSULATED TOOLS: TOOLS WITH TWO PRONG PLUGS

4. Tools marked "Double Insulated" do not require grounding. They have a special double insulation system which satisfies OSHA requirements and complies with the applicable standards of Underwriters Laboratories, Inc., the Canadian Standard Association, and the National Electrical Code. **(See Figure B.)**
5. Double insulated tools may be used in either of the 120 volt outlets shown in the following illustration. **(See Figure B.)**



## EXTENSION CORDS

1. **Grounded** tools require a three wire extension cord. **Double Insulated** tools can use either a two or three wire extension cord.
2. As the distance from the supply outlet increases, you must use a heavier gauge extension cord. Using extension cords with inadequately sized wire causes a serious drop in voltage, resulting in loss of power and possible tool damage. **(See Figure C, next page.)**
3. The smaller the gauge number of the wire, the greater the capacity of the cord. For example, a 14 gauge cord can carry a higher current than a 16 gauge cord. **(See Figure C.)**
4. When using more than one extension cord to make up the total length, make sure each cord contains at least the minimum wire size required. **(See Figure C.)**
5. If you are using one extension cord for more than one tool, add the nameplate amperes and use the sum to determine the required minimum cord size. **(See Figure C.)**






6. If you are using an extension cord outdoors, make sure it is marked with the suffix "W-A" ("W" in Canada) to indicate it is acceptable for outdoor use.
7. Make sure your extension cord is properly wired and in good electrical condition. Always replace a damaged extension cord or have it repaired by a qualified electrician before using it.
8. Protect your extension cords from sharp objects, excessive heat, and damp or wet areas.

<b>RECOMMENDED MINIMUM WIRE GAUGE FOR EXTENSION CORDS* (120 VOLT)</b>					
<b>NAMEPLATE AMPERES (At Full Load)</b>	<b>EXTENSION CORD LENGTH</b>				
	<b>25 Feet</b>	<b>50 Feet</b>	<b>75 Feet</b>	<b>100 Feet</b>	<b>150 Feet</b>
<b>0 – 2.0</b>	<b>18</b>	<b>18</b>	<b>18</b>	<b>18</b>	<b>16</b>
<b>2.1 – 3.4</b>	<b>18</b>	<b>18</b>	<b>18</b>	<b>16</b>	<b>14</b>
<b>3.5 – 5.0</b>	<b>18</b>	<b>18</b>	<b>16</b>	<b>14</b>	<b>12</b>
<b>5.1 – 7.0</b>	<b>18</b>	<b>16</b>	<b>14</b>	<b>12</b>	<b>12</b>
<b>7.1 – 12.0</b>	<b>18</b>	<b>14</b>	<b>12</b>	<b>10</b>	<b>-</b>
<b>12.1 – 16.0</b>	<b>14</b>	<b>12</b>	<b>10</b>	<b>-</b>	<b>-</b>
<b>16.1 – 20.0</b>	<b>12</b>	<b>10</b>	<b>-</b>	<b>-</b>	<b>-</b>

**FIGURE C** \* Based on limiting the line voltage drop to five volts at 150% of the rated amperes.

## SYMBOLOLOGY

	Double Insulated
	Canadian Standards Association
	Underwriters Laboratories, Inc.
<b>V ~</b>	Volts Alternating Current
<b>A</b>	Amperes
<b>n<sub>o</sub>xxxx/min.</b>	No Load Revolutions per Minute (RPM)

## UNPACKING

When unpacking, check to make sure all the parts shown on the **Parts List on page 14** are included. If any parts are missing or broken, please call Harbor Freight Tools at the number shown on the cover of this manual as soon as possible.

## ASSEMBLY AND OPERATING INSTRUCTIONS

### IMPORTANT

Carefully inspect the condition of the accessory before use and check the accessory continually during use. If any damage is noted, stop immediately and replace the accessory with an undamaged one. **Harbor Freight Tools cannot be held responsible for damage caused by using a damaged accessory on this tool.**

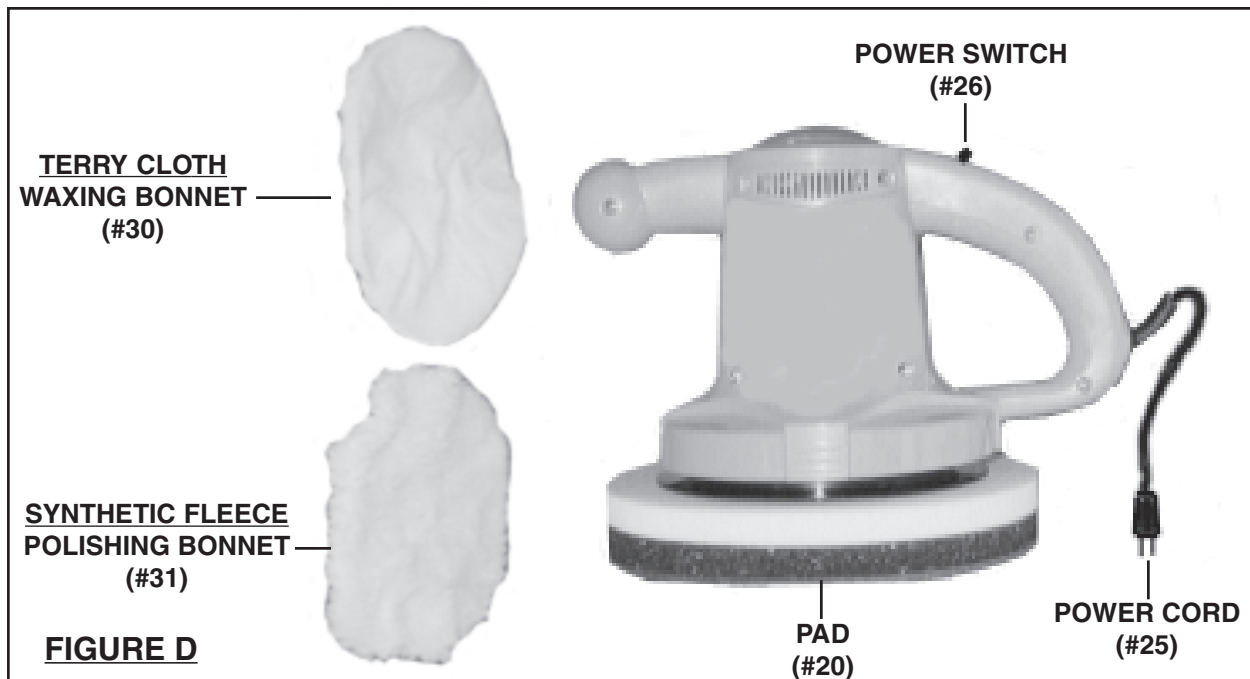
**NOTE:** For additional information regarding the parts listed in the following pages, refer to the **Assembly Diagram on page 14**.

1. **CAUTION:** Always make sure the Power Cord (part #25) of the Polisher/Waxer is unplugged from its electrical outlet *prior* to making any adjustments to the tool.
2. Place a clean *terry cloth* Waxing Bonnet (part #30) securely onto the Pad (part #20). **(See Figure D, next page.)**
3. **NOTE:** Prior to waxing/polishing a vehicle, make sure it's surface has been thoroughly cleaned and is free of dust, dirt, oil, grease, etc.
4. Apply about two tablespoons of wax (not included) evenly on the terry cloth Waxing Bonnet (part #30). Do not apply the wax directly to the surface of the vehicle. The amount of wax needed will vary according to the size of the vehicle being waxed. **NOTE:** Avoid using too much wax. For additional applications of wax to the Waxing Bonnet, reduce the amount of wax. The Waxing Bonnet will not absorb as much wax in subsequent applications. **(See Figure D.)**
5. Plug the Power Cord (part #25) of the Polisher/Waxer into an electrical extension cord (not included). Then, plug the extension cord into a grounded, 120 volt, electrical outlet. **(See Figure D.)**
6. In order to keep the extension cord out of the way, *hang it over your shoulder*.
7. **NOTE:** Always start and stop the Polisher/Waxer while it is held firmly against the surface of the vehicle. Failure to do so may result in the Waxing Bonnet (part #30) being thrown from the Pad (part #20). **(See Figure D.)**
8. Grip the Polisher/Waxer firmly with both hands. Then turn the Power Switch (part #26) to its "ON" position and allow the Pad (part #20) to rotate to its fullest speed. **(See Figure D.)**
9. Begin applying wax to the vehicle. Apply the wax to all flat surfaces with *broad,*

REV 06/05

*sweeping strokes in a criss-cross pattern.* Apply the wax evenly over the surface of the vehicle, and add additional wax as needed.


10. After the wax has been applied to the vehicle's surface, turn the Power Switch (part #26) to its "OFF" position. Then unplug the Power Cord (part #25) from the electrical extension cord, and unplug the extension cord from the grounded, 120 volt, electrical outlet. **(See Figure D.)**



11. Remove the Waxing Bonnet (part #30) from the Pad (part #20). With the Waxing Bonnet in your hand apply the wax to all hard to reach areas of the vehicle such as around lights, door handles, under bumpers, etc. **(See Figure D.)**
12. Allow sufficient time for the wax to dry on the vehicle.
13. Place a clean Polishing Bonnet (part #31) securely onto the Pad (part #20). **(See Figure D.)**
14. Plug the Power Cord (part #25) of the Polisher/Waxer into the electrical extension cord. Then, plug the extension cord into the grounded, 120 volt, electrical outlet. **(See Figure D.)**
15. Hand the extension cord over your shoulder to keep the cord out of the way.
16. **NOTE:** Always start and stop the Polisher/Waxer while it is held firmly against the surface of the vehicle. Failure to do so may result in the Polishing Bonnet (part #31) being thrown from the Pad (part #20). **(See Figure D.)**

17. Grip the Polisher/Waxer firmly with both hands. Then turn the Power Switch (part #26) to its “ON” position and allow the Pad (part #20) to rotate to its fullest speed. **(See Figure D.)**
18. Begin polishing the vehicle by lightly buffing off the wax residue in a *circular* pattern. Continue polishing until all the wax residue is removed.
19. After the wax has been removed from the vehicle’s surface, turn the Power Switch (part #26) to its “OFF” position. Then unplug the Power Cord (part #25) from the electrical extension cord, and unplug the extension cord from the grounded, 120 volt, electrical outlet. **(See Figure D.)**
20. Remove the Polishing Bonnet (part #31) from the Pad (part #20). With the Polishing Bonnet in your hand, remove the wax from all hard to reach areas of the vehicle such as around lights, door handles, under bumpers, etc. **(See Figure D.)**

## INSPECTION, MAINTENANCE, AND CLEANING

1.  **WARNING!** Make sure the Power Switch (part #26) of the Polisher/Waxer is in its “OFF” position and that the tool is unplugged from its electrical outlet before performing any inspection, maintenance, or cleaning procedures.
2. **BEFORE EACH USE**, inspect the general condition of the Waxer/Polisher. Check for loose screws, misalignment or binding of moving parts, cracked or broken parts, damaged electrical wiring, and any other condition that may affect its safe operation. If abnormal noise or vibration occurs, have the problem corrected before further use.  
**Do not use damaged equipment.**
3. The most common error when waxing/polishing a vehicle is applying too much wax. If the Pad (part #20) becomes saturated with wax, polishing will be more difficult and will take longer. Applying too much wax may also reduce the life of the Pad. If the Waxing Bonnet (part #30) continually comes off the Pad during use, too much wax may have been applied.
4. Remove the Waxing/Polishing Bonnets (part #30, #31) from the Pad (part #20) when the Waxer/Polisher is not in use. This will allow the Pad to dry and retain its original shape.
5. To prolong Pad (part #20) life and shape, store the Waxer/Polisher with the Pad face up.

6. The Waxing/Polishing Bonnets (parts #30, #31) may be machine-washed, in cold water, with detergent. Then, machine-dry the Bonnets at medium heat.
7. Use only a clean cloth and mild detergent to clean the body of the Waxer/Polisher. Do not use solvents. Do not immerse any part of the tool in liquid.

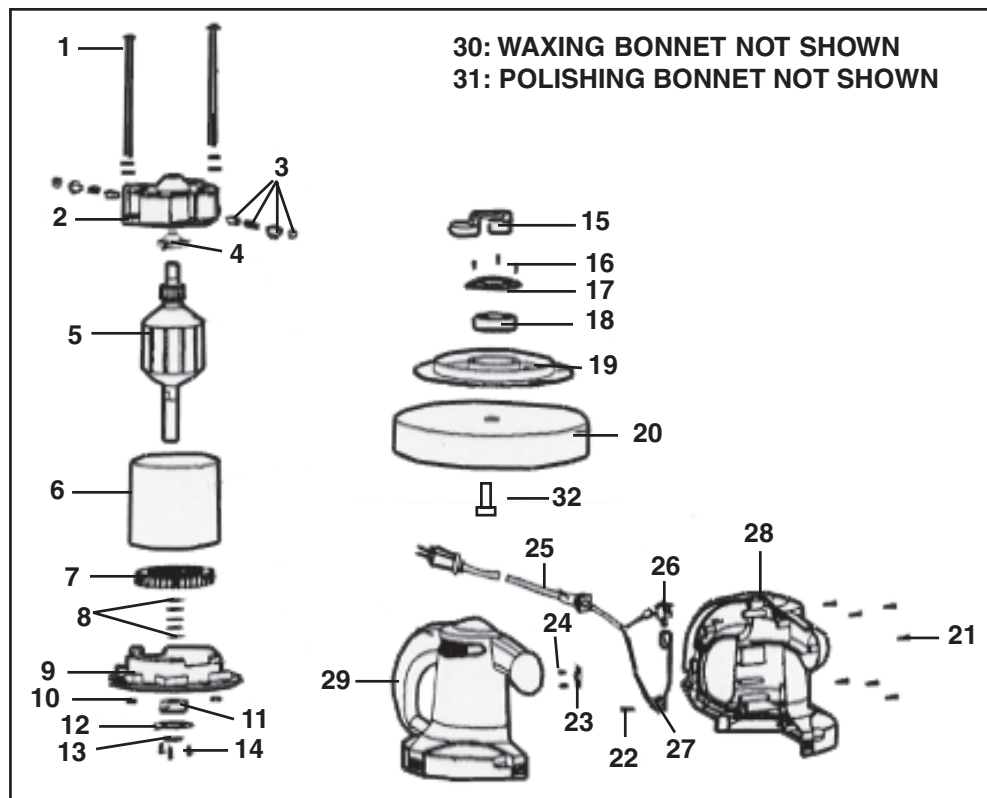
<b>PLEASE READ THE FOLLOWING CAREFULLY</b>
--

THE MANUFACTURER AND/OR DISTRIBUTOR HAS PROVIDED THE PARTS LIST AND ASSEMBLY DIAGRAM IN THIS MANUAL AS A REFERENCE TOOL ONLY. NEITHER THE MANUFACTURER OR DISTRIBUTOR MAKES ANY REPRESENTATION OR WARRANTY OF ANY KIND TO THE BUYER THAT HE OR SHE IS QUALIFIED TO MAKE ANY REPAIRS TO THE PRODUCT, OR THAT HE OR SHE IS QUALIFIED TO REPLACE ANY PARTS OF THE PRODUCT. IN FACT, THE MANUFACTURER AND/OR DISTRIBUTOR EXPRESSLY STATES THAT ALL REPAIRS AND PARTS REPLACEMENTS SHOULD BE UNDERTAKEN BY CERTIFIED AND LICENSED TECHNICIANS, AND NOT BY THE BUYER. THE BUYER ASSUMES ALL RISK AND LIABILITY ARISING OUT OF HIS OR HER REPAIRS TO THE ORIGINAL PRODUCT OR REPLACEMENT PARTS THERETO, OR ARISING OUT OF HIS OR HER INSTALLATION OF REPLACEMENT PARTS THERETO.

## PARTS LIST

Part #	Description	Qty.	Part #	Description	Qty.
1	Motor Thru Bolts	2	17	Bearing Cover	1
2	End Bell Assy.	1	18	Bearing	1
3	Motor Brush Set	2	19	Pad Holder	1
4	Sphere Bearing	1	20	Pad	1
5	Armature	1	21	Screw	8
6	Magnet, Yoke Assy.	1	22	Screw	1
7	Fan	1	23	Cord Retainer	1
8	Shim	5	24	Screw	2
9	Motor Plate Assy.	1	25	Power Cord	1
10	Nut	2	26	Power Switch	1
11	Motor Bearing	1	27	Bridge Rectifier	1
12	Shaft Clip	1	28	Right Housing	1
13	Bearing Cover	1	29	Left Housing	1
14	Screw	3	30	Waxing Bonnet (not shown)	1
15	Counterweight	1	31	Polishing Bonnet (not shown)	1
16	Screw	3	32	Right Hand Threaded Bolt	1

## ASSEMBLY DIAGRAM



**NOTE:** Some parts are listed and shown for illustration purposes only, and are not available individually as replacement parts.

## Free Manuals Download Website

<http://myh66.com>

<http://usermanuals.us>

<http://www.somanuals.com>

<http://www.4manuals.cc>

<http://www.manual-lib.com>

<http://www.404manual.com>

<http://www.luxmanual.com>

<http://aubethermostatmanual.com>

Golf course search by state

<http://golfingnear.com>

Email search by domain

<http://emailbydomain.com>

Auto manuals search

<http://auto.somanuals.com>

TV manuals search

<http://tv.somanuals.com>