

2. Installation

Note: The installation must be performed by an electrician or a qualified installer.

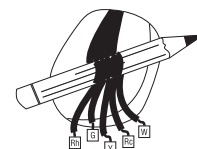
2.1 Removing the Old Thermostat

IN ORDER TO AVOID ANY RISK OF ELECTRIC SHOCK, CUT POWER TO THE HEATING/COOLING SYSTEM.

- 1 Remove the old thermostat to access the wires.

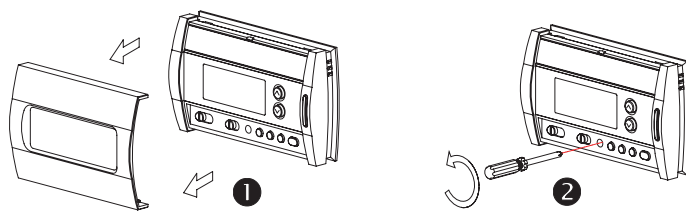
Attention: If the old thermostat was mounted onto an electrical box, it might have been powered by 120/240 volts. In this case, the TH147-P or TH148LE-P thermostat cannot be used.

- 2 Identify and label each wire (with the corresponding letter on the wire terminal) and remove them from the terminals.
- 3 If necessary, strip the end of each wire (maximum of 6 mm).
- 4 Wrap the wires around a pencil to prevent them from falling into the wall.
- 5 If the hole in the wall is too big, insulate it using a non-flammable material in order to avoid air draughts behind the thermostat.

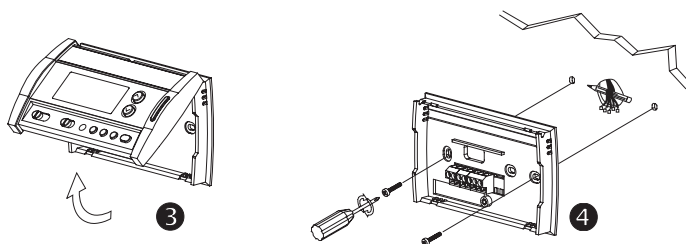


2.2 Installing the New Baseplate

For a new installation, choose a location approximately 1.5 m (5 feet) above the floor and on an inside wall. Avoid draughty areas (top of staircase, air outlet, etc), dead air spots (behind doors), direct sunlight or areas near concealed pipes or chimneys.



- 1 Remove the thermostat faceplate.
- 2 Loosen the locking screw in order to separate the thermostat from its baseplate (the screw cannot be completely removed).



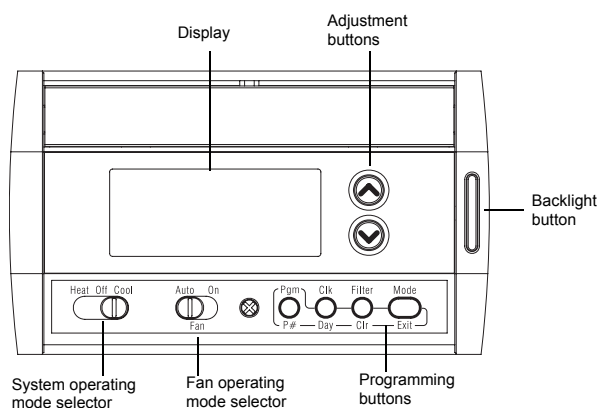
- 3 Gently tilt the thermostat upwards.
- 4 Mark and bore the appropriate mounting holes (or use the existing holes). Insert the plastic anchors.
- 5 Pass the wires through the opening of the baseplate and fix the baseplate to the wall using the screws provided.

1. Introduction

The TH147-P and TH148LE-P programmable thermostats can be used to control:

- a gas, fuel oil or electric furnace - 2 or 3 wires
- a central air conditioner - 2 or 3 wires
- a hot water system with or without pump - 2 wires
- a millivolt system - 2 wires
- a central heating and cooling system - 4 or 5 wires

Attention: These thermostats are not compatible with heat pumps or multi-stage systems.



Functions	TH147-P	TH148LE-P
Heating/cooling control	X	X
Fan control	X	X
7-day programming including:	X	X
- Pre-programmed energy-saving schedule	X	X
- Early Start	X	X
- Temporary bypass	X	X
- Time display (12 h or 24 h)	X	X
Programmable cycle lengths	X	X
Temperature display in °C or °F	X	X
Backlit display	X	X
Battery replacement indicator	X	X
Filter replacement indicator	X	X
Unoccupied mode activated remotely (requires Aube's CT240)		X
Interchangeable faceplates (titanium, charcoal & taupe)		X
Automatic daylight savings changeover		X

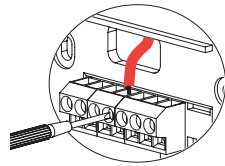
2.3 Connecting the Thermostat

Refer to the following table for matching the wire labels with the thermostat terminals.

Terminals	Description	Wire labels
Rh	Heating power supply	Rh, R, 4, V
Rc	Cooling power supply	Rc, R
W	Heating signal	W, W1, H
Y	Cooling signal	Y, Y1, M
G	Fan	G, F
Un / Un	Input for a remote control device (TH148LE-P only)	-

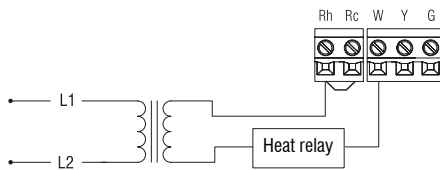
Note: Do not connect wires identified as C, X or B. Wrap the bare end of these wires with electrical tape.

- Loosen the screws of the terminal block and insert the wires in the respective terminals.
- Tighten the screws.

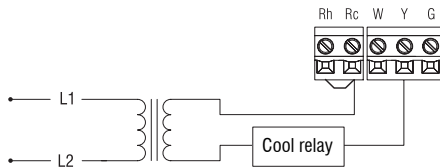


Important: The red jumper wire between Rh and Rc terminals must be removed in a 5-wire installation.

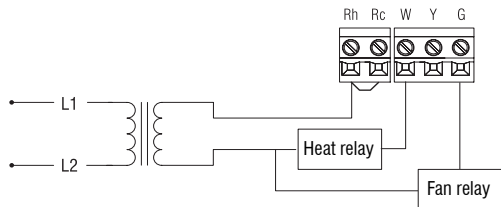
2.3.1 2-wire Heating



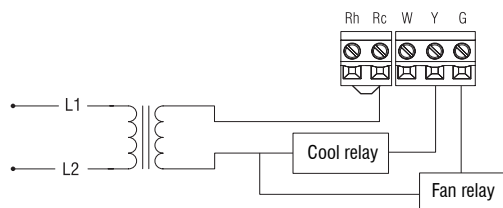
2.3.2 2-wire Cooling



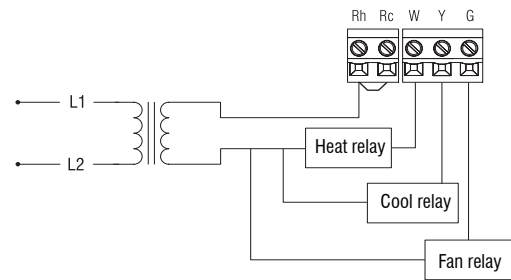
2.3.3 3-wire Heating



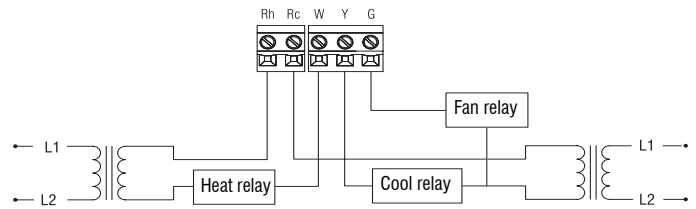
2.3.4 3-wire Cooling



2.3.5 4-wire Heating and Cooling



2.3.6 5-wire Heating and Cooling



Note: Remove the red jumper wire between terminals Rc and Rh.

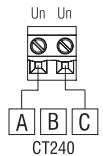
2.4 Remote Control Input (TH148LE-P only)

The TH148LE-P thermostat has an input to which a CT240 telephone controller (optional) or any other remote control system (e.g., home automation) can be connected. When the input receives a 12-VDC signal, the thermostat switches from its current mode to the unoccupied mode and vice versa when the signal is removed.

The unoccupied mode can be used to re-adjust the temperature to save energy when you are away for an extended period of time. To set the unoccupied mode temperature, see section 4.

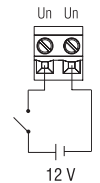
2.4.1 Connecting to CT240

Connect TH148LE-P terminals UN and UN to CT240 terminals A and C (no polarity to observe).



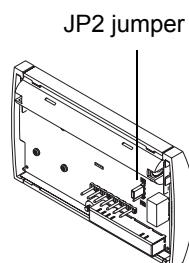
2.4.2 Connecting to a Home Automation System

Connect TH148LE-P terminals UN and UN to a 12-VDC circuit as shown.



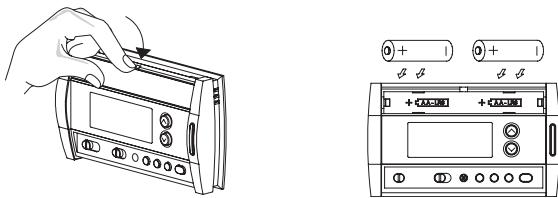
2.5 Setting JP2 Jumper

The jumper specifies how the fan will operate when it is placed in automatic mode.



HG	Leave the jumper in this position if you have a gas or fuel oil furnace.
HE	Place the jumper in this position if you have an electric furnace.

2.6 Installing the Batteries



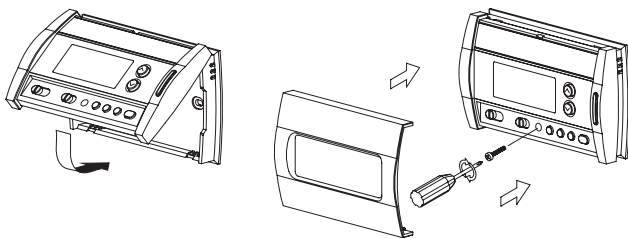
- ❶ Gently pull out the battery cover.
- ❷ Install the batteries as shown. Observe the polarity.
- ❸ Reinstall the battery cover. You will hear a clicking sound.

After the batteries are installed, the thermostat performs a sequence of tests for approximately 5 seconds.

Afterwards, the thermostat displays the measured temperature. It is normal that the displayed temperature be higher than the ambient temperature if you hold the thermostat in your hands. Once installed on the wall, the thermostat will display the ambient temperature. By default, the setpoint is 21°C (70°F) and the operating mode is set on manual.

The time and day settings flash to indicate that they must be set (see section 5.1).

2.7 Completing the Installation



- ❶ Once the baseplate and the batteries are installed, mount the thermostat on the baseplate.
- ❷ Secure the thermostat using the locking screw and install the faceplate.
- ❸ Apply power back to the system.

3. Basic Functions

3.1 System Operating Mode

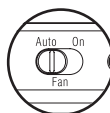
Use this selector switch to set the system to heating mode (HEAT), cooling mode (COOL), or Off.



Note: When you place the thermostat in cooling mode, you might need to wait up to five minutes before cooling can start. This delay is a safety feature for the compressor. ✱ will flash on the screen until cooling can start again.

3.2 Fan Operating Mode

Use the selector switch to set the fan to automatic mode (AUTO) or continuous mode (ON).



Note: This switch is not used in a 2-wire installation as the fan is not connected to the thermostat.

AUTO	The fan operates only when heating or cooling is activated.
ON	The fan operates continuously.

3.3 Viewing and Setting the Temperature

The ambient temperature is normally displayed. To view the setpoint, press once on one of the ⓄⓄ buttons. The setpoint is displayed for 5 seconds and is indicated by the ✱ symbol on the display. During the setpoint display, press one of the ⓄⓄ buttons to change it.

3.4 Backlight

The display illuminates for 12 seconds when the backlight button or either of the ⓄⓄ buttons is pressed.

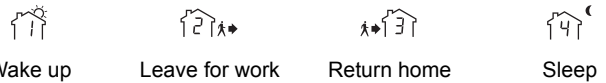
3.5 Thermostat Control Mode

3.5.1 Manual

The setpoint must be set manually. To place the thermostat in this mode, press [Mode]. The house icon will disappear.

3.5.2 Automatic

The setpoint varies according to the programmed schedule. To place the thermostat in this mode, press [Mode]. The current period settings will be displayed. The four possible periods are:



To see the default schedule settings, see section 5.3.

3.5.3 Unoccupied (TH148LE-P only)

To place the thermostat in unoccupied mode, see section 2.4. In this mode, the 🏠 icon is displayed and only the ⓄⓄ buttons work to allow a temporary bypass.

3.6 Temporary Bypass

3.6.1 Automatic Mode

If you modify the setpoint (using the ⓄⓄ buttons) when the thermostat is in automatic mode, the thermostat temporarily bypasses the current program. The new setpoint will be maintained for 2 hours, then the thermostat will return to the program currently running in automatic mode. The house icon flashes during the bypass.

3.6.2 Unoccupied Mode (TH148LE-P only)

If you modify the setpoint (using the ⓄⓄ buttons) when the thermostat is in unoccupied mode, the thermostat temporarily bypasses the setpoint of the unoccupied mode. The new setpoint will be maintained for 2 hours, then the thermostat will return to the setpoint of the unoccupied mode. The 🏠 icon flashes during the bypass.

3.7 Filter Indicator

After 500 hours of operation, an icon appears to indicate that the filter needs replacement. Once the filter is replaced, press [Filter] for 3 seconds to remove the icon and reset the counter.

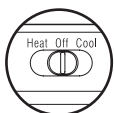


3.8 Battery Indicator

An icon appears when the batteries need replacement. This icon will flash for 120 days, then the thermostat will cut power to the heating/cooling unit. The icon disappears once the batteries are replaced and the thermostat reinstalled on its base.



Warning: Before removing the batteries, place the system switch on the thermostat to Off. Otherwise, the heating/cooling unit might still be running even after the batteries are removed.



After replacing the batteries, set the time and day (see section 5.1). For TH148LE-P model, set the date also (see section 5.2).

Note: The temperature and schedule settings are not erased when the batteries are removed.

4. Configuration Menu

DISPLAY	DESCRIPTION	DEFAULT	OPTIONS
un i t	Temperature display	°C	°C or °F
Hr	Time display	12 h	12 h or 24 h
ES	Early Start ¹	Off	On or Off
dLS	Automatic daylight savings changeover (TH148LE-P only) ²	Off	On or Off
HLd	Unoccupied mode setpoint - heating (TH148LE-P only) ^{3, 4}	10°C (50°F)	5°C to 28°C (41°F to 82°F)
	Unoccupied mode setpoint - cooling (TH148LE-P only) ^{3, 4}	35°C (95°F)	15°C to 35°C (59°F to 95°F)
[PH	Heating cycles per hour ⁴	4	2, 3, 4, 5 or 6 ⁵
	Cooling cycles per hour ⁴	4	2, 3, 4, 5 or 6 ⁶

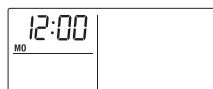
¹ When Early Start is enabled (On), the thermostat determines when heating or cooling should start so the desired temperature is reached at the set time.
² When this function is On, the thermostat automatically switches to daylight savings time on the second Sunday of March and to normal time on the first Sunday of November (see section 5.2).
³ To enable the unoccupied mode, see section 2.4.
⁴ When either the heating or cooling parameter is displayed, use the Heat/Cool selector switch to alternate between the two parameters.
⁵ For optimal heating control, use the setting that matches your system as follows: 2=30 min (steam, gravity), 3=20 min (hot water, 90%+ high-efficiency furnace), 4=15 min (gas or oil), 5=12 min (alternate setting for gas or oil), 6=10 min (electric).
⁶ The corresponding cycle lengths are: 2=30 min., 3=20 min., 4=15 min., 5=12 min., 6=10 min.

- To access the configuration menu, press the backlight button for 3 seconds.
- To go to the next parameter (menu item), briefly press the backlight button.
- To modify a parameter, press $\odot\odot$.
- Repeat steps 2 and 3 if necessary.
- Press the backlight button for 3 seconds to exit the configuration menu.

5. Programming

5.1 Setting the Time and Day

- Press [Clk]. The hour flashes.

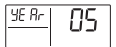


- Set the hour using $\odot\odot$.
- Press [Clk]. The minutes flash.
- Set the minutes using $\odot\odot$.
- Press [Clk]. The day flashes.
- Set the day using $\odot\odot$.
- Press [Exit] to exit.

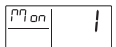
5.2 Setting the Date (TH148LE-P model only)

The date must be needed for the daylight-savings changeover function.

- Press [Clk] for 3 seconds to display the year.



- Set the year using $\odot\odot$ and press [Clk] to display the month.



- Set the month using $\odot\odot$ and press [Clk] to display the date.



- Set the date using $\odot\odot$.

- Press [Exit] to exit.

5.3 Pre-programmed Schedule

When set in automatic mode, the thermostat follows the programmed schedule. You can program up to 4 periods per day. To program a period, you must set its start time, its heating setpoint and its cooling setpoint. You can have a different program for each day of the week.

Your thermostat is pre-programmed with the following schedule.

Pre-programmed settings			MO	TU	WE	TH	FR	SA	SU
	Heating	21°C (70°F)	6:00 a.m.						
	Cooling	25.5°C (78°F)							
	Heating	16.5°C (62°F)	8:00 a.m.						--
	Cooling	29.5°C (85°F)							
	Heating	21°C (70°F)	6:00 p.m.						--
	Cooling	25.5°C (78°F)							
	Heating	16.5°C (62°F)	10.00 p.m.						
	Cooling	28°C (82°F)							

In the pre-programmed schedule, all 4 periods are used for Monday through Friday and only periods 1 and 4 are used for Saturday and Sunday.

5.4 Customizing the Schedule

Use the following grid to record your new settings.

Periods	Settings	Program days						
		MO	TU	WE	TH	FR	SA	SU
	Time							
	Heating							
	Cooling							
	Time							
	Heating							
	Cooling							
	Time							
	Heating							
	Cooling							
	Time							
	Heating							
	Cooling							

- Press [Pgm] to enter the programming mode. The settings for Monday, Period 1 appear.



- To select a day to program, press [Day] until the day is displayed. Hold for 3 seconds to select all 7 days. (MO: Monday, TU: Tuesday, WE: Wednesday, TH: Thursday, FR: Friday, SA: Saturday and SU: Sunday).

Note: When all 7 days are selected, the settings of the displayed period are copied to all 7 days. For example, if period 1 is displayed and you then select all 7 days, they will all have the same settings for period 1. Similarly, if you then display period 2 while all 7 days are already selected, they will now have the same settings for period 2.

- To set the start time of a period, first press [P#] until the period number is displayed and the time display flashes. Then press the \odot buttons. The time changes in 15-minute increments.

Note: If you want to skip (cancel) a period, press [CLR]. The time and temperature display for that period will disappear. For example, in the pre-programmed schedule, periods 2 and 3 have been skipped for Saturday and Sunday.

- To set the temperature for a period, first press [P#] until the period number is displayed and the temperature display flashes. Use the Heat/Cool selector to display either the heating setpoint or the cooling setpoint. Set the temperature using the \odot buttons.
- Press [Exit] to exit the programming mode.



6. Technical Specifications

Power supply: 2 AA batteries
 Maximum load: 1 A @ 24 Vca per output
 Unoccupied load: 12 VCC / \pm 10% / 20 mA
 Setpoint range (heating): 5 to 28°C (41 to 82°F)
 Setpoint range (cooling): 15 to 35°C (59 to 95°F)
 Display range: -10 to 50°C (14 to 122°F)
 Storage temperature: -20 to 50°C (-2 to 122°F)
 Temperature display resolution: 0.5°C (1°F)
 Accuracy: \pm 0.5°C (1°F)
 Cycle length: 10, 12, 15, 20 or 30 min. (programmable)
 Compressor short-cycle protection (minimum off time): 5 minutes
 Program protection: non-volatile memory
 Dimensions: 127 mm x 75 mm x 28 mm (5 in. x 3 in. x 1 in.)

7. Warranty

Aube warrants this product, excluding battery, to be free from defects in the workmanship or materials, under normal use and service, for a period of one (1) year from the date of purchase by the consumer. If at any time during the warranty period the product is determined to be defective or malfunctions, Aube shall repair or replace it (at Aube's option).

If the product is defective,

- return it, with a bill of sale or other dated proof of purchase, to the place from which you purchased it, or
- contact Aube. Aube will make the determination whether the product should be returned, or whether a replacement product can be sent to you.

This warranty does not cover removal or reinstallation costs. This warranty shall not apply if it is shown by Aube that the defect or malfunction was caused by damage which occurred while the product was in the possession of a consumer.

Aube's sole responsibility shall be to repair or replace the product within the terms stated above. AUBE SHALL NOT BE LIABLE FOR ANY LOSS OR DAMAGE OF ANY KIND, INCLUDING ANY INCIDENTAL OR CONSEQUENTIAL DAMAGES RESULTING, DIRECTLY OR INDIRECTLY, FROM ANY BREACH OF ANY WARRANTY, EXPRESS OR IMPLIED, OR ANY OTHER FAILURE OF THIS PRODUCT. Some provinces and states do not allow the exclusion or limitation of incidental or consequential damages, so this limitation may not apply to you.

THIS WARRANTY IS THE ONLY EXPRESS WARRANTY HONEYWELL MAKES ON THIS PRODUCT. THE DURATION OF ANY IMPLIED WARRANTIES, INCLUDING THE WARRANTIES OF MERCHANTABILITY AND FITNESS FOR A PARTICULAR PURPOSE, IS HEREBY LIMITED TO THE ONE-YEAR DURATION OF THIS WARRANTY. Some provinces and states do not allow limitations on how long an implied warranty lasts, so the above limitation may not apply to you.

This warranty gives you specific legal rights, and you may have other rights which vary from province or state to another.

8. Service

If you have any questions about the product installation, operation or warranty, contact us at:

705 Montrichard
 Saint-Jean-sur-Richelieu, Quebec
 J2X 5K8
 Canada
 Tel.: (450) 358-4600
 Toll-free: 1-800-831-AUBE
 Fax: (450) 358-4650
 Email: aube.service@honeywell.com

For more information on our products, go to
www.aubetech.com



As an ENERGY STAR® partner, Aube Technologies has determined that this product meets the ENERGY STAR guidelines for energy efficiency.

Free Manuals Download Website

<http://myh66.com>

<http://usermanuals.us>

<http://www.somanuals.com>

<http://www.4manuals.cc>

<http://www.manual-lib.com>

<http://www.404manual.com>

<http://www.luxmanual.com>

<http://aubethermostatmanual.com>

Golf course search by state

<http://golfingnear.com>

Email search by domain

<http://emailbydomain.com>

Auto manuals search

<http://auto.somanuals.com>

TV manuals search

<http://tv.somanuals.com>