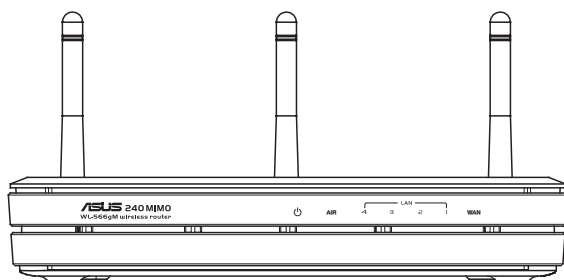




## WL-566gM Wireless Router



## User Manual

E 2306/ Dec 2005



## Index

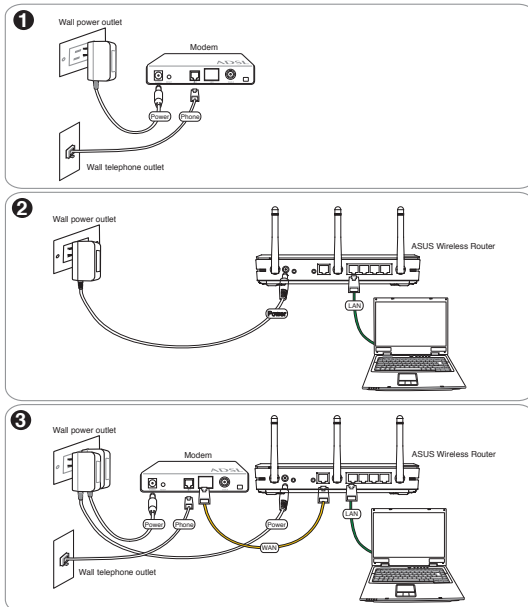
<b>1. Package contents .....</b>	<b>3</b>
<b>2. Connecting ADSL modem and wireless router .....</b>	<b>3</b>
1) Cable connection .....	3
2) Status indicators .....	4
3) Wall mount option .....	4
<b>3. Configuring the wireless router .....</b>	<b>5</b>
1) ASUS Wireless Router wired connection.....	5
2) Setting IP address for wired or wireless connection .....	5
3) Configuring the wireless router .....	6
4) Quick setup.....	7
<b>4. Commonly used advanced features .....</b>	<b>12</b>
1) How to setup encryption .....	12
2) Setting up a virtual server in your LAN .....	12
3) Setting up virtual DMZ in your LAN .....	13
4) Setting up DDNS .....	13
5) Setting up Bandwidth Management.....	17
<b>5. Troubleshooting .....</b>	<b>19</b>
<b>6. Additional Information: EZSetup .....</b>	<b>21</b>
1) Utility Installation for WL-566gM .....	21
2) EZSetup.....	22
<b>7. Appendix .....</b>	<b>24</b>

## 1. Package contents

- WL-566gM wireless router x 1
- Power adapter x 1
- Utility CD x 1
- RJ45 cable x 1
- Quick Start Guide x 1

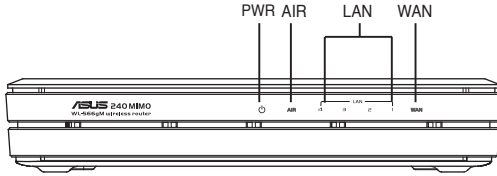
## 2. Connecting ADSL modem and wireless router

### 1) Cable connection





## 2) Status indicators



### PWR (Power)

Off	No power
On	System ready
Flashing-slow	Firmware upgrade failed
Flashing-quick	EZsetup processing

### AIR (Wireless Network)

Off	No power
On	Wireless system ready
Flashing	Transmitting or receiving data (wireless)

### WAN (Wide Area Network)

Off	No power or no physical connection
On	Has physical connection to an Ethernet network
Flashing	Transmitting or receiving data (through Ethernet cable)

### LAN 1-4 (Local Area Network)

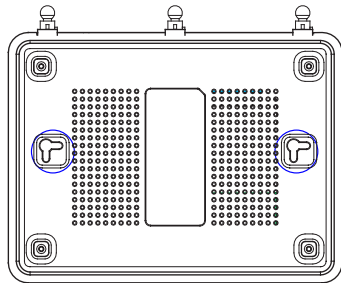
Off	No power or no physical connection
On	Has physical connection to an Ethernet network
Flashing	Transmitting or receiving data (through Ethernet cable)

## 3) Wall mount option

Out of the box, the ASUS Wireless Router is designed to sit on a raised flat surface like a file cabinet or book shelf. The unit may also be converted for mounting to a wall or ceiling.

Follow these steps to mount the ASUS Wireless Router to a wall:

1. Look on the underside for the two mounting hooks.
2. Mark two upper holes in a flat surface.
3. Tighten two screws until only 1/4" is showing.
4. Latch the hooks of the ASUS Wireless Router onto the screws.



**Note:** Re-adjust the screws if you cannot latch the ASUS Wireless Router onto the screws or if it is too loose.



## 3. Configuring the wireless router



- Note:**
- 1) Before you start, we recommend using a wired connection for initial configuration, which may avoid possible setup problems due to wireless uncertainty.
  - 2) ASUS also provides an EZSetup button for fast wireless configuration. If you would like to use EZSetup for your wireless network configuration, please refer to chapter 6 for more information.

The ASUS Wireless Router can meet various working scenarios with proper configuration. The default settings of the wireless router may need change so as to meet the individual needs; therefore, before using the ASUS Wireless Router, check the basic settings to make sure they all work in your environment.

You can configure the ASUS Wireless Router via your web browser. Connect a notebook PC or desktop PC to your ASUS Wireless Router (either directly or through a hub) with an Ethernet cable, or to establish a wireless connection between the terminal and the wireless router.

For the wireless connection, you need an IEEE 802.11b/g compatible device, such as an ASUS WLAN card. Disable encryption and set the SSID to "default" on your wireless card. If you want to configure the ASUS Wireless Router so as to access the Internet, you must have correct TCP/IP settings. Set the IP address of your terminal within the same subnet of your ASUS Wireless Router.

### 1) ASUS Wireless Router wired connection

The ASUS Wireless Router is supplied with an Ethernet cable in the package. Since the ASUS Wireless Router has integrated auto-crossover function, therefore, you can use either straight-through or crossover cable for wired connection. Plug one end of the cable to the WAN port on the rear panel of the router and the other end to the Ethernet port of your ADSL or Cable modem.

#### Wireless-Connection

Refer to your wireless adapter user manual for how to associate with a wireless router. The default SSID of the ASUS Wireless Router is "default" (in lower case), encryption is disabled and open system authentication is used.



**Note:** If configuration is done via wired connection, ignore this.

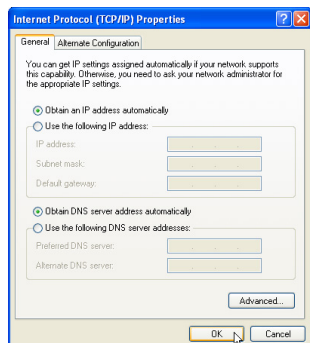
### 2) Setting IP address for wired or wireless connection

#### Getting IP address Automatically

The ASUS Wireless Router integrates DHCP server functions, therefore, you can make your PC to get the IP address automatically from the ASUS Wireless Router.



**Note:** Before rebooting your PC, the ASUS Wireless Router should be switched ON and in ready state.





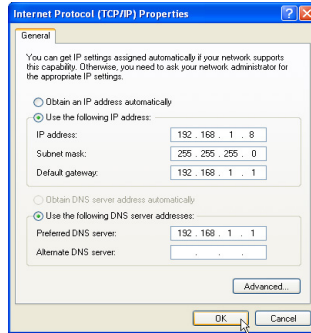
### Setting IP Manually

To set IP address manually, you need to know the default settings of the ASUS Wireless Router:

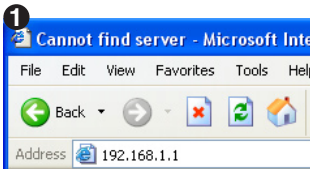
- IP address 192.168.1.1
- Subnet Mask 255.255.255.0

To set up the connection with a manually assigned IP address, the address of your PC and the wireless router must be within the same segment:

- IP address of your PC is 192.168.1.xxx (xxx can be any number between 2 and 254. Make sure the IP address is not used by other device)
- Subnet Mask is 255.255.255.0 (same as the ASUS Wireless Router)
- Gateway 192.168.1.1 (this is the ASUS Wireless Router)
- DNS 192.168.1.1 (ASUS Wireless Router IP address or your own).



### 3) Configuring the wireless router

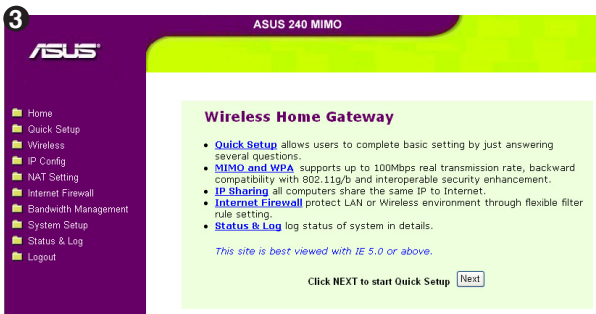


Enter the following address in your web browser: <http://192.168.1.1>



#### Defaults

User name: admin Password: admin

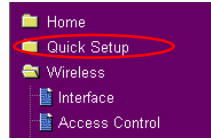


After logging in, you can see the ASUS Wireless Router home page.

The homepage displays quick links to configure the main features of the wireless router.

## 4) Quick setup

To start quick setup, click **Next** to enter the "Quick Setup" page. Follow the instructions to setup the ASUS Wireless Router.



- 1 Select your time zone and click **Next**.

**Select Time Zone**

Please choose the time zone where you are locating in.

Time Zone:

- 2 ASUS wireless router supports five types of ISP services: cable, PPPoE, PPTP, static WAN IP, and Telstra BigPond. Select the correct connection type and click **Next** to continue.

**Select Internet Connection Type**

WL566gM supports several kinds of connection to Internet through its WAN port. Please select connection type you need. In addition, before getting on Internet, please make sure you have connected WL566gM's WAN port to your DSL or Cable Modem.

Cable Modem or other connection type that gets IP automatically.  
 ADSL connection that requires username and password. It is known as PPPoE.  
 ADSL connection that requires username, password and IP address. It is known as PPTP.  
 ADSL or other connection type that uses static IP address.  
 Telstra BigPond Cable Modem Service.

### Cable user

If you are using services provided by cable ISP, select **Cable Modem or other connection that gets IP automatically**. If your ISP provides you hostname, MAC address, and heartbeat server address, fill these information into the boxes on the setting page; if not, click **Next** to skip this step.

**Fill Information Required by ISP**

Your ISP may require the following information to identify your account. If not, just press Next to ignore it.

Host Name:

MAC Address:

Heart-Beat Server:

**WAN IP Setting**

Fill TCP/IP setting for WL566gM to connect to Internet through WAN port.

Get IP automatically?  Yes  No

IP Address:

Subnet Mask:

Default Gateway:

Get DNS Server automatically?  Yes  No

DNS Server 1:

DNS Server 2:

### PPPoE user

If you use PPPoE service, select **ADSL connection that requires username and password. It is known as PPPoE**. You need to input the username and password provided by your ISP. Click **Next** to continue.

**Set Your Account to ISP**

If you apply an account with dynamic IP. You must get user account and password from your ISP. Please fill this data into the following fields carefully. Or, if you apply an ADSL account with static IP, just ignore user name and password information.

User Name:

Password:



## PPTP user

If you are using PPTP services, select **ADSL connection that requires username, password and IP address**. It is known as PPTP. Fill in the username, password and IP address provided by your ISP into the fields. Click **Next** to continue.

**Set Your Account to ISP**

If you apply an account with dynamic IP, you must get user account and password from your ISP. Please fill this data into the following fields carefully. Or, if you apply an ADSL account with static IP, just ignore user name and password information.

User Name:

Password:



**WAN IP Setting**

Fill TCP/IP setting for WL566gM to connect to Internet through WAN port.

Get IP automatically?  Yes  No

IP Address:

Subnet Mask:

Default Gateway:

Get DNS Server automatically?  Yes  No

DNS Server 1:

DNS Server 2:

## Static IP user

If you are using ADSL or other connection type that uses static IP addresses, select **ADSL or other connection type that uses static IP address**. Input the IP address, subnet mask, and default gateway provided by your ISP. You can choose to specify DNS servers, or select to get DNS information automatically.

**WAN IP Setting**

Fill TCP/IP setting for WL566gM to connect to Internet through WAN port.

Get IP automatically?  Yes  No

IP Address:

Subnet Mask:

Default Gateway:

Get DNS Server automatically?  Yes  No

DNS Server 1:

DNS Server 2:

- 3 After the connection type setting is complete, you are to set up your wireless interface. Specify to your wireless router an SSID (Service Set Identifier), which is a unique identifier attached to packets sent over WLAN. This identifier emulates a password when a device attempts to communicate with your wireless router via WLAN. To connect to a wireless router, your wireless card must use the same SSID.

**Configure Wireless Interface**

First step to set your wireless interface is to give it a name, called SSID. In addition, if you would like to protect transmitted data, please select the Security Level and assign a password for authentication and data transmission if it is required.

SSID:

Security Level:    
Low(None)  
Medium(WEP-64bit)  
Medium(WEP-128bit)  
High(WPA-PSK)

Passphrase:

WEP Key 1 (10 or 26 hex digits):

WEP Key 2 (10 or 26 hex digits):

WEP Key 3 (10 or 26 hex digits):

WEP Key 4 (10 or 26 hex digits):

Key Index:

If you want to protect transmitted data, select a middle or high **Security Level** to enable encryption methods.

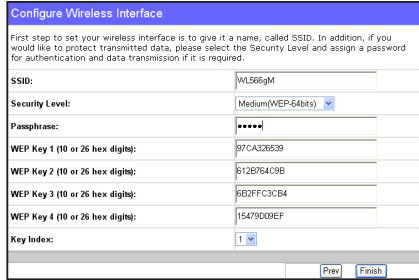
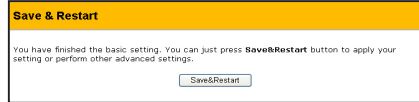
**Medium:** Only users with the same WEP key settings can connect to your wireless router and transmit data using 64bits or 128bits WEP key encryption.

**High:** Only users with the same WPA pre-shared key settings can connect to your wireless router and transmit data using TKIP encryption.



- 4 The ASUS wireless router configuration page provides a convenient approach to setup the WEP Keys: you can set up a Passphrase and let the system use certain algorithm to generate four WEP keys. Thus, instead of inputting long WEP keys, you can set up the encryption by fill in a single Passphrase.

For example, if we select WEP 64bits encryption mode and input 11111 as the Passphrase, the WEP Keys are generated as shown in the right picture. Record the Passphrase and the WEP keys in your notebook, then click **Finish**. A window prompts out asking you to save the settings. Click **Save&Restart** to activate the new settings.

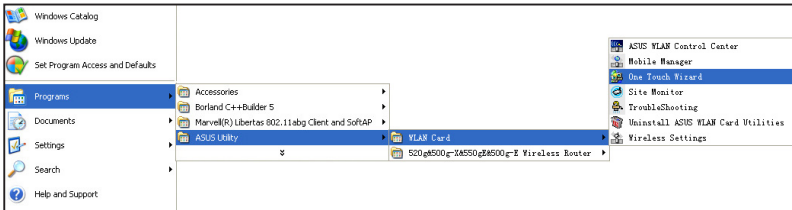
- 5 After the settings on the wireless router are complete, we are to setup encrypted wireless connection between the wireless router and your PCs pre-installed with wireless cards. If your use ASUS Wireless Card, you can use ASUS One Touch Wizard to setup the connection. You can also choose Windows® XP Wireless Zero Configuration service to configure the wireless connection.

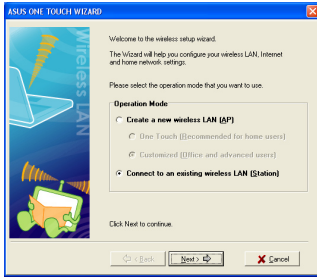


**Note:** We recommend using 240 MIMO wireless adapters to connect WL-566gM so as to achieve high speed data transmission.

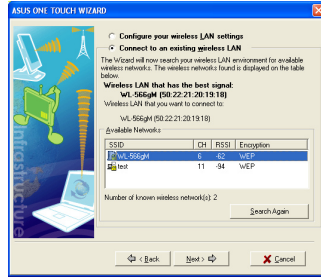
## Configure WLAN Card with ASUS One Touch Wizard

- 6 If you have installed ASUS wireless card together with its utilities and drives on your PC, click **Start** -> **Programes** -> **ASUS Utility**-> **WLAN Card** -> **One Touch Wizard** to launch the One Touch Wizard utility.

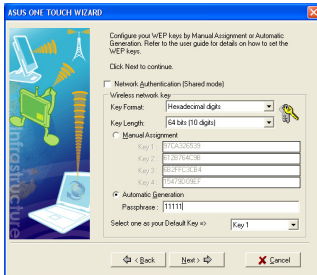




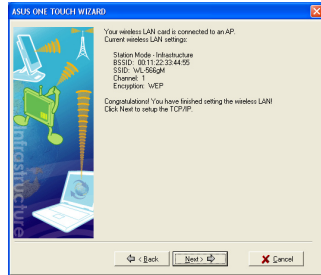
1. Select **Connect to an existing wireless LAN (Station)** radio button and click **Next** to continue.



2. ASUS One Touch Wizard searches and displays all the available stations in the **Available Networks** window as shown in the picture. Select your wireless router and press **Next** to continue.

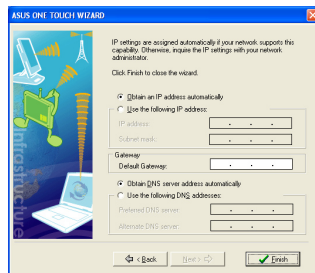


3. Next, we are to set up the encryption for the wireless adapter. Set **Key Length** to **64 bits (10digits)**, select **Automatic Generation** radio button and input **11111** into the **Passphrase** box and click **Next**.



4. Wait for several seconds to get the wireless adapter connected to the wireless router. Press **Next** to continue.

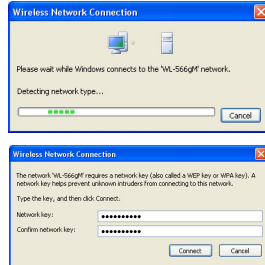
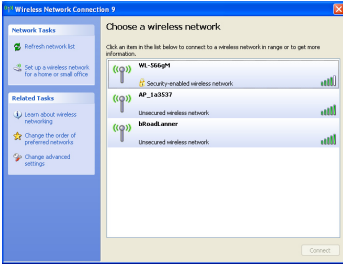
**Note:** The encryption settings on your WLAN Card and your wireless router must be the same.



5. An IP configuration screen prompts out. Setup the IP address of your PC according to your network condition. After the setup is complete, click **Finish** to exit the One Touch Wizard.

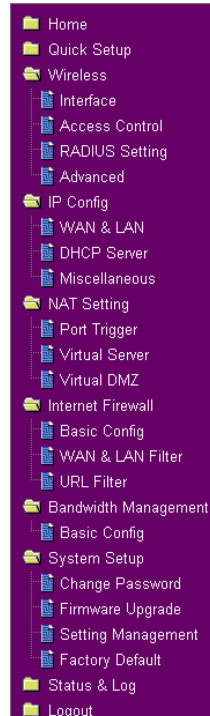
## 7 Windows® Wireless Zero Configuration service

For non-ASUS wireless adaptor user, you can set up the wireless connection via Windows® Wireless Zero Configuration (WZC) service.



1. Double-click the wireless network icon on the task bar to view available networks. Select your wireless router and click **Connect**.
2. A window prompts out asking for the encryption keys. Input the 10-digit keys you have set on the wireless router and click **Connect**. The connection is complete.

- 8 To adjust other settings of the wireless router, click on items on the menu to open a submenu and follow the instructions to setup the router. Tips are given when you move your cursor over each item.



## 4. Commonly used advanced features

The following pages are setup examples of commonly used advanced features. You can setup these features via a web browser.

### 1) How to setup encryption

#### WL-566gM encryption setup

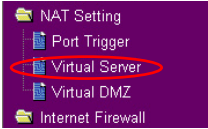
Please refer to Page 9-11 for encryption setup information or to use ASUS EZSetup features which enable a quick encryption setup through several mouse clicks (Chapter 6).

### 2) Setting up a virtual server in your LAN



Virtual Server is a kind of technology which enables a computer within a local area network (LAN) to receive specialized packets from network, for example, when you need to make a host into an FTP server or Web server for outside user to access. Virtual DMZ is quite similar to Virtual Server, but it allows all incoming data packets instead of using policy to filter the packets.

- 1 Click **Virtual Server** in NAT Setting folder to open the NAT configuration page.



- 2 Select **Yes** to enable virtual server. For example, if host 192.168.1.100 need to be set to FTP server (Virtual server) which is accessible by outside user, we shall direct all incoming packets with 21 as the destination ports to the host. Therefore, FTP access request from outside users are forwarded to the host.

**NAT Setting - Virtual Server**

To make services, like WWW, FTP, provided by a server in your local network accessible for outside users, you should specify a local IP address to the server. Then, add the IP address and network protocol type, port number, and name of the service in the following list. Based on the list, the gateway will forward service request from outside users to the corresponding local server.

Enable Virtual Server?  Yes  No

**Virtual Server List** Add Del

Well-Known Applications:

Port Range	Local IP	Local Port	Protocol	Description
<input type="text" value="21"/>	<input type="text" value="192.168.1.100"/>	<input type="text" value="21"/>	<input type="text" value="TCP"/>	<input type="text" value="FTP Server (21)"/>

- 3 Click **Finish**.

Restore Finish Apply

- 4 Click **Save & Restart** to restart the wireless router and activate the settings.

**Save & Restart**

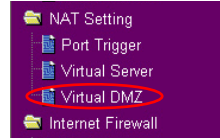
Save&Restart will save all setting you have changed to WL566gM and restart it. Please click **Save&Restart** button to continue.

Save&Restart

### 3) Setting up virtual DMZ in your LAN

You can enable all internet service such as Netmeeting, MSN and online games by enabling Virtual DMZ on the hosts in your LAN.

- 1 Click **Virtual DMZ** in the NAT Setting menu.



- 2 Enter the IP address of the host and click **Finish**.

**NAT Setting - Virtual DMZ**

Virtual DMZ allows you to expose one computer to Internet, so that all the inbounds packets will be redirected to the computer you set. It is useful while you run some applications that use uncertained incoming ports. Please use it carefully.

IP Address of Exposed Station:

- 3 Click **Save & Restart** to restart the wireless router and activate the settings.

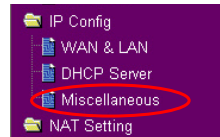
**Save & Restart**

Save&Restart will save all setting you have changed to WL566gM and restart it. Please click **SaveRestart** button to continue.

### 4) Setting up DDNS

Dynamic DNS (DDNS) allows user to expose host to Internet through DDNS service provider. This function facilitates users who use dynamic IP service, i.e. the router receives a new IP address once the IP address release is expired. If you set up DDNS service on the wireless router, each time the wireless router connect to the Internet and get an IP address from ISP IP address pool, this function automatically updates your IP address information to DDNS service provider so that user on Internet can access the hosts and servers in your local area network through a predefined domain name registered at the DDNS service provider.

- 1 Click **Miscellaneous** from IP Config folder.



- 2 Select **Yes** to enable the DDNS service. If you have not a DDNS account, click **Free Trial** to apply for one.

**DDNS Setting**

Dynamic-DNS (DDNS) allows you to export your server to Internet with a unique name, even though you have no static IP address. Currently, several DDNS clients are embedded in WL566gM. You can click Free Trial below to start with a free trial account.

Enable the DDNS Client?  Yes  No

Server:



- 3 After clicking Free Trial, you are directed to the homepage of [www.DynDNS.org](http://www.DynDNS.org), where you can register and apply for DDNS services.

Read the policy and select "I have read..."

- 4 Enter your user name, e-mail address, password, then click **Create Account**.

- 5 A message prompts out informing that your account has been created. An e-mail is sent to your mailbox entered in the last step. Open your mailbox and read the mail.

- 6 Open your e-mail to find the activation letter. Click the hyperlink to activate your account.

- 7 The link directs you to a login page. Click **login**.

- 8 Enter the user name and password then click **Login**.



- 9 After logging in, you can see this welcome message.

## Logged In

You are currently logged in as: account ([Logout](#))

- 10 Select **Services** tab.

Logged in User: WL566gM  
McLennan - 148384 - 1483.04

About
Services
Account
Support
News

### Services

DynDNS provides a variety of services that help enhance your home or business Internet experience. We offer superior domain name services (DNS), high quality domain management, world-class e-mail services, web redirection, and network monitoring. All of our services include free technical support by e-mail or phone where you speak to a highly trained engineer rather than a call center reading a script off of a screen.

#### DNS Services

- Custom DNS - Our flagship DNS management tool for your own domain
- Secondary DNS - Add reliability to your own name servers
- Recursive DNS - Ensure DNS resolution for your DNS games
- Dynamic DNS - A free DNS service for those with dynamic IP addresses
- Static DNS - A free DNS service for those with static IP addresses
- TLD DNS - DNS for operators of C/LLDs and gTLDs

#### Domain Registration

- Domain Registration - Register new domains
- Domain Transfer - Escape poor quality bulk sellers

- 11 Click **Add Dynamic DNS Host**.

My Account

My Services

Account Upgrades

MailHop Outbound

Recursive DNS

SLA

Premier Support

My Zones

Add Zone Services

My Hosts

Add Host Services

Dynamic DNS

Static DNS

WebHop

MyWebHop

Network Monitoring

Account Settings

Billing

### Add Host Services

Dynamic DNS (7)	Add Dynamic DNS Host
Static DNS (7)	<a href="#">Add Static DNS Host</a>
WebHop (7)	<a href="#">Add WebHop</a>
MyWebHop (7)	<a href="#">Add MyWebHop</a>
Network Monitoring (7)	<a href="#">Add Network Monitoring</a>

- 12 Enter the host name then click **Add Host**.

### New Dynamic DNS<sup>SM</sup> Host

<b>Hostname:</b>	account	(dyn dns.org)
<b>IP Address:</b>	210.74.250.126	
<b>Enable Wildcard:</b>	<input type="checkbox"/>	
<b>Mail Exchanger (optional):</b>	<input type="checkbox"/> Backup MX?	
<span style="border: 1px solid red; padding: 2px 10px;">Add Host</span> <span style="margin-left: 10px; padding: 2px 10px;">Reset Form</span>		

- 13 You can see this message when your hostname is successfully created.

### Hostname Created

The hostname you have requested has been created. The information now in the database and DNS system is:

<b>Hostname:</b>	account.dyn dns.org
<b>IP Address:</b>	210.74.250.126
<b>Wildcard:</b>	N
<b>Mail Exchanger:</b>	None
<b>Backup MX:</b>	N



- 14 Fill the account information into the DDNS setting fields of your wireless router.

DDNS Setting	
Dynamic-DNS (DDNS) allows you to export your server to Internet with a unique name, even though you have no static IP address. Currently, several DDNS clients are embedded in WL566gM. You can click Free Trial below to start with a free trial account.	
Enable the DDNS Client?	<input type="radio"/> Yes <input checked="" type="radio"/> No
Server:	WWW.DYNDNS.ORG <span>Free Trial</span>
User Name or E-mail Address:	account
Password or DDNS Key:	*****
Host Name:	account.dyndns.org
Enable wildcard?	<input type="radio"/> Yes <input checked="" type="radio"/> No
Update Manually:	<input type="button" value="Update"/>

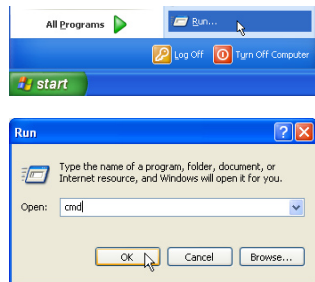
- 15 Click **Finish**.

<input type="button" value="Restore"/>	<input type="button" value="Finish"/>	<input type="button" value="Apply"/>
--	---------------------------------------	--------------------------------------

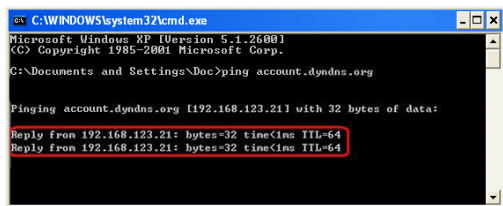
- 16 Click **Save & Restart** to restart the wireless router and activate the settings.

Save & Restart
Save&Restart will save all setting you have changed to WL566gM and restart it. Please click <b>Save&amp;Restart</b> button to continue.
<input type="button" value="Save&amp;Restart"/>

- 17 Now we are to verify whether DDNS is working. Click Start menu and select **Run...**Type **cmd** and click **OK** to open the CLI console.



- 18 Type **ping account.dyndns.org** (your DDNS domain name). If you can see the reply like what is shown in the right picture, DDNS is working correctly.

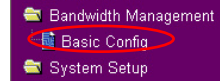




## 5) Setting up Bandwidth Management

Bandwidth Management provides a mechanism to setup bandwidths according to IP address or port or both. You can define the bandwidth policy, including minimum bandwidth and maximum bandwidth, to a fixed IP address or a fixed port or both for controlling the download traffic. You could also define upload bandwidth by setting up the NAT.

- 1 Click **Basic Config** page in Bandwidth Management folder.



- 2 Select **Yes** to enable Bandwidth Management function.

Bandwidth Management- Basic Config	
Bandwidth Management allows you to control the bandwidth for different applications.	
Enable Bandwidth Management?	<input checked="" type="radio"/> Yes <input type="radio"/> No

### 3 Download stream

If we want to limit the download bandwidth of a host within a speed range, for example, 100 to 200kbps, we need to fill in the host IP address, the maximum and the minimum data speeds into the download policy field. If the minimum speed is defined, the host can transmit data at a minimum data speed of 100kbps regardless of the network conditions.

1. To apply on all host an FTP download speed policy, leave the IP address field blank, input "20" in the **Port** field and define the speeds, then click **Add**.

Download Policy List			
IP Address	Port	Max.(kbps)	Min.(kbps)
	20	100	50
192.168.1.6		200	100

2. To set up web access download policy, input "80" in the **Port** field, define the speeds and click **Add**.

Download Policy List			
IP Address	Port	Max.(kbps)	Min.(kbps)
	80	300	100
192.168.1.6	20	200	100
		100	50

3. To set up download bandwidth policy of a certain service for a host, input the host IP address and the port number of the service, define the speeds and click **Add**.

Download Policy List			
IP Address	Port	Max.(kbps)	Min.(kbps)
192.168.1.100	3702	10	
192.168.1.6	20	200	100
	80	100	50
		300	100

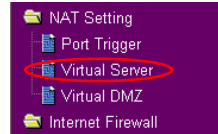


- To set up download bandwidth policy for the all hosts in your LAN, leave the IP address and port fields blank, define the speeds (the speeds are higher than their counterparts in other entries), then click **Add**.

Download Policy List			
IP Address	Port	Max.(kbps)	Min.(kbps)
		500	200
192.168.1.6		200	100
	20	100	50
	80	300	100
192.168.1.100	3702	10	

## 4 Upload stream

If you want to set up upload traffic control policy, for example, to limit the upload bandwidth of port 2100 of 192.168.1.2 within 10 to 80kbps, we shall first set up NAT policy.



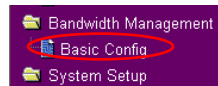
- Select **Yes** to enable the Virtual Server. In the Virtual Server List field, fill the port, IP address into the fields and press **Add**.

NAT Setting - Virtual Server					
To make services, like WWW, FTP, provided by a server in your local network accessible for outside users, you should specify a local IP address to the server. Then, add the IP address and network protocol type, port number, and name of the service in the following list. Based on the list, the gateway will forward service request from outside users to the corresponding local server.					
Enable Virtual Server? <input checked="" type="checkbox"/> Yes <input type="checkbox"/> No					
Virtual Server List				<b>Add</b>	<b>Del</b>
Well-Known Applications: <input type="text" value="User Defined"/>					
Port Range	Local IP	Local Port	Protocol	Description	
2100	192.168.1.2	2100	TCP		

- Press **Apply** button.

<b>Restore</b>	<b>Finish</b>	<b>Apply</b>
----------------	---------------	--------------

- Return to the Upload Policy List in Bandwidth Management setting page.



- Set the **Port** as "2100", **Max (kbps)** as "80", **Min.(kbps)** as "10", then click **Add**.

Upload Policy List			
Port	Max.(kbps)	Min.(kbps)	
2100	80	10	

- Press **Finish** button.

<b>Restore</b>	<b>Finish</b>	<b>Apply</b>
----------------	---------------	--------------

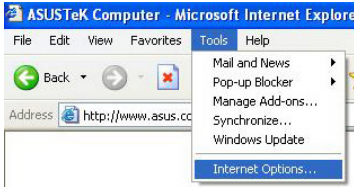
- Click **Save & Restart** to restart the wireless router and activate the settings.

Save & Restart
Save&Restart will save all setting you have changed to WL566gM and restart it. Please click <b>Save&amp;Restart</b> button to continue.
<b>Save&amp;Restart</b>



## 5. Troubleshooting

### 1. Cannot access to web browser for router configuration



1. Open a web browser and open "Internet Options" dialog box.
2. Click on "Delete Cookies" and "Delete Files".

### 2. Cannot Establish Connection via Wireless

#### Out of Range:

- Put the router closer to the wireless client.
- Try to change the channel setting.

#### Authentication:

- Use wired connection to connect to router.
- Check the wireless security setting.
- Do the hard reset on the wireless router by pressing the Reset button on the rear panel for more than 5 seconds.

#### Couldn't find the router:

- Do the hard reset on the wireless router by pressing the Reset button on the rear panel for more than 5 seconds.
- Check the setting in the wireless adapter such as SSID and encryption setting.

### 3. Cannot get access to the Internet via wireless LAN adapter

- Move the router closer to the wireless client.
- Check whether the wireless adapter is connected to the correct AP.
- Check whether the wireless channel in use conforms to the channels available in your country/ area.
- Check encryption setting.
- Check whether the ADSL or Cable connection is correct.
- Retry using another Ethernet cable.



## 4. Internet is not accessible

- Check the lights on ADSL modem and the Wireless Router
- Check whether the "WAN" LED on the Wireless Router is ON. If the LED is not ON, change the cable and try again.

### 4.1. When ADSL Modem "Link" light is ON (not blinking), this means Internet Access is Possible.

- Restart your computer.
- Refer to the Quick Setup Guide of the wireless router and reconfigure the settings.
- Check whether the WAN LED on the router is ON or not.
- Check wireless encryption settings.
- Check whether the computer can get the IP address or not (via both wired network and wireless network).
- Make sure your Web browser is configured to use the local LAN, and is not configured to use a proxy server.

### 4.2. If the ADSL "LINK" light blinks continuously or stays off, Internet access is not possible - the Router is unable to establish a connection with the ADSL network.

- Make sure your cables are all correctly connected .
- Disconnect the power cord from the ADSL or Cable modem, wait a few minutes, then reconnect the cord.
- If the ADSL light continues to blink or stays OFF, contact your ADSL service provider.

## 5. Network name or encryption keys are forgotten

- Try to setup the wired connection for setup the wireless encryption again.
- Do the hard reset on the wireless router by pressing the Reset button on the rear panel for more than 5 seconds.

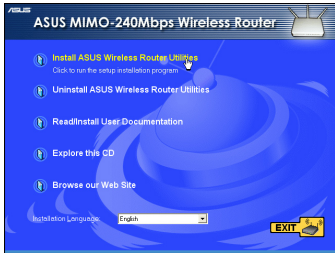
## 6. How to reset to defaults

The following are factory default values. If you push the Restore button on the back of the ASUS Wireless Router for over 5 seconds, or click the "Restore" button on the "Factory Default" page under "Advanced Setup", the following default settings overwrite the old settings on your wireless router.

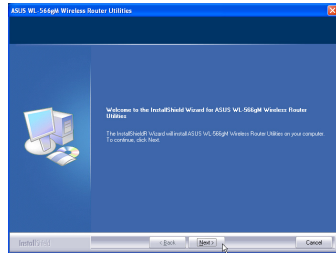
User Name:	admin	Subnet Mask:	255.255.255.0
Password:	admin	DNS Server 1:	192.168.1.1
Enable DHCP:	Yes (if plug in Wan cable)	DNS Server 2:	(Blank)
IP address:	192.168.1.1	SSID:	default
Domain Name:	(Blank)		

## 6. Additional Information: EZSetup

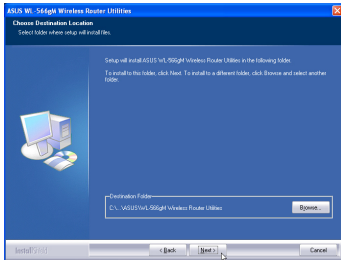
### 1) Utility Installation for WL-566gM



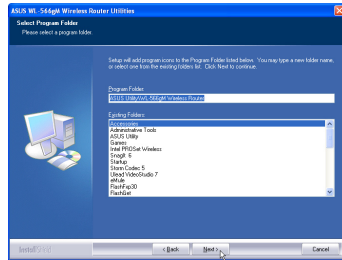
1. Click **Install ASUS Wireless Router Utilities** to run the setup installation program.



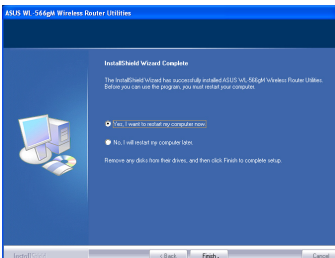
2. Click **Next** to continue.



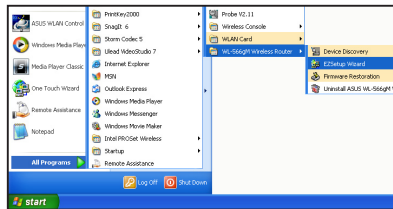
3. Click **Next** to install the utility in the designated location.



4. Select a program folder and click **Next**.



5. Select **Yes** and press **Finish** to restart your computer.

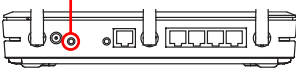


6. Open the **EZSetup Wizard**.

## 2) EZSetup

Wireless LAN setup will complete in two easy steps. First open the EZSetup utility from Start menu, then push the EZSetup button on the rear panel for 3 seconds.

- 1 Push **EZSetup** over 3 sec. and release.

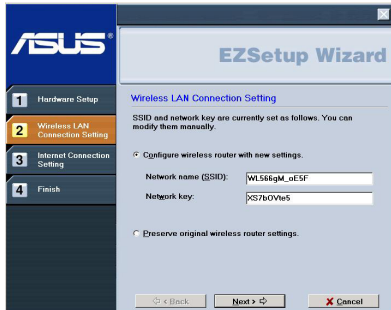


- 1) If the setup button is pushed without running the EZsetup wizard utility, the PWR indicator will flash and Internet connections will pause for a short period but will then return to normal operation without change.
- 2) To use EZSetup, you must have an ASUS wireless adapter such as WL-106gM.

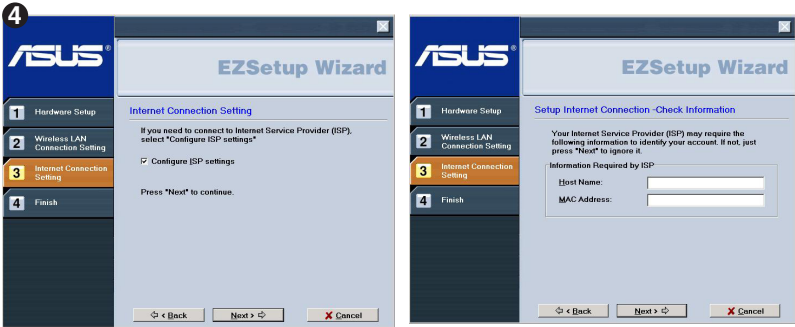


Click the **EZSetup** button in the utility.

**Note:** Use EZSetup Wizard with one wireless client at a time. If the wireless client computer cannot discover the wireless router while in EZSetup mode, please shorten the distance between the client and the router.



Wireless settings, including network name and network keys, are generated automatically. You can modify these settings manually. Note if your wireless router is configured before, select **Preserve original wireless router settings** to use the current value. Click **Next** to continue.



If you need to configure the ISP settings for your wireless router, select **Configure ISP settings**, click **Next** and follow the instructions to complete the settings.



Setup is complete, press **Print/Save Wireless LAN Settings** button for future reference. Click **Finish** to exit the EZSetup utility.



## 7. Appendix



### **FCC Warning Statement**

This device complies with Part 15 of the FCC Rules. Operation is subject to the following two conditions:

- (1) this device may not cause harmful interference, and
- (2) this device must accept any interference received, including interference that may cause undesired operation.

This equipment has been tested and found to comply with the limits for a class B digital device, pursuant to part 15 of the FCC Rules. These limits are designed to provide reasonable protection against harmful interference in a residential installation.

This equipment generates, uses and can radiate radio frequency energy and, if not installed and used in accordance with the instructions, may cause harmful interference to radio communications. However, there is no guarantee that interference will not occur in a particular installation. If this equipment does cause harmful interference to radio or television reception, which can be determined by turning the equipment off and on, the user is encouraged to try to correct the interference by one or more of the following measures:

- Reorient or relocate the receiving antenna.
- Increase the separation between the equipment and receiver.
- Connect the equipment into an outlet on a circuit different from that to which the receiver is connected.
- Consult the dealer or an experienced radio/TV technician for help.



### **CAUTION:**

Any changes or modifications not expressly approved by the party responsible for compliance could void the user's authority to operate the equipment.

### **Prohibition of Co-location**

This device and its antenna(s) must not be co-located or operating in conjunction with any other antenna or transmitter

### **Safety Information**

To maintain compliance with FCC's RF exposure guidelines, this equipment should be installed and operated with minimum distance 20cm between the radiator and your body. Use on the supplied antenna.

### **Declaration of Conformity for R&TTE directive 1999/5/EC**

Essential requirements – Article 3

Protection requirements for health and safety – Article 3.1a





Testing for electric safety according to EN 60950-1 has been conducted. These are considered relevant and sufficient.

Protection requirements for electromagnetic compatibility – Article 3.1b

Testing for electromagnetic compatibility according to EN 301 489-1 and EN 301 489-17 has been conducted. These are considered relevant and sufficient.

Effective use of the radio spectrum – Article 3.2

Testing for radio test suites according to EN 300 328- 2 has been conducted. These are considered relevant and sufficient.

## **CE Mark Warning**



This is a Class B product, in a domestic environment, this product may cause radio interference, in which case the user may be required to take adequate measures.

## Free Manuals Download Website

<http://myh66.com>

<http://usermanuals.us>

<http://www.somanuals.com>

<http://www.4manuals.cc>

<http://www.manual-lib.com>

<http://www.404manual.com>

<http://www.luxmanual.com>

<http://aubethermostatmanual.com>

Golf course search by state

<http://golfingnear.com>

Email search by domain

<http://emailbydomain.com>

Auto manuals search

<http://auto.somanuals.com>

TV manuals search

<http://tv.somanuals.com>