



Bluetooth™ Satellite Navigation for Windows Mobile Pocket PCs

# COPILOT® live<sup>6</sup> POCKET PC



## User Manual



# Contents

<b>Requirements</b> .....	1	Navigating Through CoPilot Screens .....	23
<b>Welcome to CoPilot!</b> .....	1	Customizing the Guidance Screens .....	23
About GPS Technology .....	1	Map Modes .....	23
<b>Safety Warning</b> .....	2	Trip Editing and Waypoints .....	24
<b>Getting Started</b> .....	2	Getting ETA's and Distances .....	24
Setting Up Your GPS Receiver.....	2	Picking Stops From the Map .....	24
In-Vehicle Hardware Setup .....	3	Optimizing Stops .....	24
Connecting Your Pocket PC .....	4	Detour Feature .....	25
Uninstalling a Previous Version .....	4	Avoiding Roads .....	25
Installing CoPilot .....	5	Settings .....	26
Product Key Entry & Activation.....	6	CoPilot Modes .....	28
Changing the Voice Option At Any Time.....	6	The GPS Menu .....	29
Speech Volume .....	6	Track Playback .....	29
Reference: Screens & Buttons on Your Pocket PC ...	31		
<b>Map Download To Your Pocket PC</b> .....	7	<b>Trip Planning on Your Pocket PC</b> .....	33
Step 1: Specify Where Data Is Stored .....	7	Saving and Loading Trip Itineraries .....	33
CoPilot QuickStart .....	7	<b>Trip Planning on Your Desktop</b> .....	34
Step 2: Choose a Data Selection Method .....	8	Reference: CoPilot on Your Desktop .....	38
Step 3: Select Your Data .....	9	<b>CoPilot Live Communications</b> .....	41
City Radius .....	9	<b>Real-Time Traffic Information</b> .....	42
Map Area .....	10	<b>Creating/Using Your Own Voice</b> .....	43
Trip .....	11	<b>Software Registration</b> .....	44
Step 4: Download the Data .....	12	<b>Technical Support</b> .....	44
POI Download Options .....	12	Troubleshooting .....	45
Adding OV2 POI Sets .....	12	Using Help Files .....	45
Trip Transfer .....	12	Data Corrections .....	45
Importing Custom Places .....	13	License Upgrade .....	46
		Adding a Data Region .....	46
		Region Selection .....	47
		Return Policy .....	47
<b>Using Your Pocket PC for Guidance</b> .....	15	<b>License Agreement</b> .....	48
Address Entry .....	15		
Start Driving! .....	16		
Entering a Home Address .....	17		
Entering a Work Address .....	17		
Favorites .....	17		
Save Current Location .....	17		
Contact Integration .....	18		
Finding Points of Interest .....	19		
Pick on Map .....	20		
Intersection .....	20		
Latitude/Longitude .....	21		
Saved Trip .....	21		
Nearby Places Search .....	21		
Closing CoPilot .....	21		
Driver Safety/Map/Itinerary Screens .....	22		

# Requirements

## Your CoPilot Live | Pocket PC Includes:

- ◆ Install CD (1) and Data CD (1)
- ◆ Quick Start Guide
- ◆ Bluetooth GPS Receiver
- ◆ Cigarette lighter charger
- ◆ In-vehicle air vent mounting clip

## Desktop PC Requirements

- ◆ Microsoft Windows 2000, ME, or XP
- ◆ 400 MHz processor or better
- ◆ 16X CD-ROM or better
- ◆ 128 MB of RAM and a hard drive with at least 225 MB of available disk space
- ◆ Microsoft ActiveSync version 3.1 or later

## Pocket PC Requirements

### With Map Data on Storage Card

- ◆ Pocket PC running Windows Mobile 5 or Windows Mobile 2003 (first or second edition)
- ◆ 5-7 MB of storage RAM
- ◆ 6-15 MB of program RAM (available for running programs)
- ◆ Storage Card recommended (minimum 32MB, 64MB recommended)

## Third Party GPS Requirements

- ◆ Standard NMEA GPS receiver\* including:
  - ◆ CF GPS receivers
  - ◆ Cabled GPS receivers
  - ◆ Wireless Bluetooth GPS receivers

\* For information on purchasing a GPS receiver from ALK Technologies, go to:

- ◆ **North America:** [www.alk.com](http://www.alk.com)
- ◆ **Europe:** [www.alk.eu.com](http://www.alk.eu.com)

# Welcome to CoPilot!



**Imagine...**a CoPilot at your side that always knows where you are, where you're going, and exactly how to get there. Now confidently drive anywhere while CoPilot, using the latest, most accurate GPS technology, shows you all the correct turns to take to reach your destination.

Better yet, if you should miss a turn, encounter heavy traffic, or simply decide to go a different way, CoPilot's dynamic directions automatically provide you with an updated route to your destination. Keep your eyes on the road and your hands on the wheel as CoPilot's unique voice technology speaks the directions to you. In addition, detailed street maps show your passengers the current street location and the route to your destination.

## About GPS Technology

The Global Positioning System (GPS), developed by the U.S. Department of Defense, is a constellation of 24 satellites that orbit the Earth twice daily. Each satellite contains an atomic clock that is accurate to the nanosecond and constantly emits radio waves toward Earth. GPS sensors (hardware devices for receiving data) can receive these signals from the satellites and, using their own internal clock, can calculate the amount of time it has taken for the signal to be received. GPS relies on the fact that radio waves travel at the speed of light to calculate distances, and the exact location of the sensor is figured by combining the data received from four satellites.

Using the data from these four satellites, GPS is able to give you the latitude, longitude and elevation of your present location, and also your road speed and direction of travel on a route. Given the right conditions, a GPS sensor can identify your geographic position anywhere in the world within a few meters.

## How CoPilot Uses GPS

CoPilot uses the GPS positional data that it receives from your hardware unit to display your current position on a map as you drive. This is called "tracking". CoPilot also uses the GPS data it receives to guide you along a planned route if you enter a destination on your Pocket PC. CoPilot guides you with audible prompts and on-screen directions as you drive.

## GPS Accuracy

The GPS signal CoPilot receives from the constellation of satellites has a rated accuracy of within 5 - 10 meters. This means that 95% of the time the reported

location is within 15 - 30 feet of your exact position. If CoPilot initially places you on the wrong road (this happens only rarely), keep driving and CoPilot will automatically correct itself and find your proper position.

Occasionally, CoPilot's GPS tracking will be less accurate or fail to work at all because your GPS receiver is unable to receive satellite signals. Heavy foliage, tall buildings, or any other structures obstructing communications will interfere with CoPilot's ability to track your location. Like your car radio, GPS tracking can also be affected by weather conditions if severe. CoPilot will continue tracking as soon as adequate signals are available. Despite these limitations, you can expect CoPilot to provide you with useable and accurate information most of the time. CoPilot will alert you if accurate information is unavailable.

CoPilot's personal, portable GPS navigation system gives you the freedom to explore and the confidence that you'll never get lost again!

## Safety Warning

### Always keep your hands on the steering wheel and eyes on the road when driving!

Do not use this product in any way that interferes with safe and attentive operation of a vehicle. When used in a vehicle, do not place the GPS receiver, antenna, power supply, or your computer where it may strike the driver or passengers if the vehicle turns sharply or stops abruptly. This product is designed, manufactured, and intended as an aid to planning and navigating routes. The accuracy of the map data, driving directions, and GPS tracking system is insufficient for this product to be used for automated navigation or in any situation in which the failure of the product could lead directly to death, personal injury, or physical or environmental damage. The driver must remain alert at all times to actual road conditions and obey all posted signs and traffic regulations.

**ALK Technologies assumes no responsibility for any damage or injury resulting from the use of this product.**

## Getting Started

### Setting Up Your GPS Receiver

**WARNING:** Never leave GPS receiver in closed vehicle that exceeds 140° F.

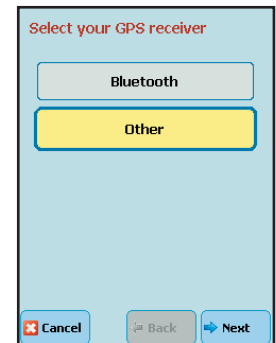
Once you have installed CoPilot on your device, you will need to set up the GPS receiver. Please check your device to see if it has a **built-in GPS satellite receiver** (see below for setup) or if it requires a **remote Bluetooth GPS receiver** (see p. 3 for setup) to obtain a GPS fix for CoPilot to calculate your route and provide navigation guidance.

#### Setting Up Your Built-in GPS Receiver:

1. If your device has a flip-up patch antenna, lift the antenna.
2. The first time you use the system, you will need to adjust the GPS port settings via the Auto Scan utility.

#### GPS Auto Scan

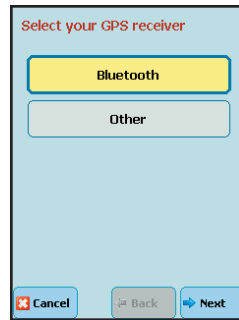
1. Start CoPilot.
2. From the CoPilot *Home* screen select '**Setup GPS**'.
3. In the GPS screen, select the '**Setup GPS**' button. Press the '**Other**' button and then tap '**Next**'.
4. From the Connection Setup options, press the '**Automatic**' button followed by '**Next**'. This will automatically set the COM port number and the baud rate for the GPS receiver. (COM settings should ultimately read COM port: **COM2**, baud rate: **4800**).
5. Once the GPS connection has configured successfully, select '**Finish**' to exit the Auto Scan utility and to continue using CoPilot.  
— To confirm the configuration is correct, look at the scrolling GPS status indicator in the bottom right corner of the driving screen (GPS reception is good when green, fair when yellow, red indicates no fix).



## Setting Up a Bluetooth GPS Receiver:

The first time that you use CoPilot, you will need to turn on Bluetooth on your device. From the Start screen on your device, tap the Bluetooth button in the bottom right corner and turn on Bluetooth. Then:

1. Switch on your Bluetooth GPS receiver (slide the switch to | ). Green and blue lights should turn on if the GPS receiver is properly charged.
2. Start CoPilot and tap **GPS**.
3. In the GPS screen, tap '**Setup GPS**'.
4. Tap the '**Bluetooth**' button and then tap '**Next**'.
5. From the '**Select your GPS receiver**' screen, tap the '**Search for Bluetooth Devices**' button and tap '**Next**'. CoPilot will automatically search for your GPS receiver.
6. Your receiver should be displayed, identified by a code **BTGPS xxxxx**. Select the receiver and tap '**Next**'.
7. CoPilot will indicate that your GPS connection has been successfully configured. Tap '**Finish**' to continue using CoPilot.



If you need further assistance, see *GPS Troubleshooting* below.

### LED STATUS LIGHTS:



**Blue LED Light indicates the Bluetooth connection status.**

Flashing every 1 second: GPS was just powered on and waiting for a connection.

Flashing every 2 seconds: GPS is connected to Pocket PC.



**Green LED Light indicates GPS status.**

Light Constantly on: GPS was just powered on and attempting to acquire a GPS position. Light is Flashing: GPS has acquired a GPS position.



**Orange/Red LED Light indicates Battery status.**

Red Light Constantly on: Battery is Low. Orange Light is Constantly on: Battery is charging. No Light (off): Battery is fully charged.

## GPS Troubleshooting:

1. **You are asked to 'add BTGPS xxxxx' during GPS setup**
  - a. Tap '**Yes**'.
  - b. You will then be prompted to enter a passkey. Please enter '**0183**' and tap '**Next**'.
  - c. You will be asked if you would like to create a Bluetooth Serial Port. Tap '**Yes**'.
  - d. You will be asked to enter a display name for your Bluetooth receiver. Please use the default name listed and tap '**Finish**'.

## 2. Proper Charging Techniques (IMPORTANT)

The Bluetooth GPS only needs to be charge for a maximum of 1 hour or until the Battery LED is off. Do not leave the Bluetooth GPS receiver connected to the charger at all times, as it will degrade the battery life and eventually drain the battery completely. Normal battery life is 8 hours.

## 3. Unable to switch on Bluetooth

- a. Close CoPilot by selecting '**Exit**' from the menu.
- b. Switch your Pocket PC off and then on again using the power button.
- c. **Restart CoPilot**, and select '**Setup GPS**' from the CoPilot Home screen.
- d. Repeat steps 1 - 5 in the *Setting Up a Bluetooth GPS Receiver* section above. Bluetooth should now be switched ON.

## 4. 'No devices found' in Search for GPS

- a. Close CoPilot by selecting '**Exit**' from the menu.
- b. Ensure that your Bluetooth GPS receiver is switched ON: Please switch the GPS receiver off and on. The green and blue lights will turn on if the GPS receiver is charged up and working properly.
- c. **Restart CoPilot** and select **Setup GPS** from the CoPilot Home screen.
- d. Repeat steps 2-5 in the *Configuring the Bluetooth GPS Receiver* section above.
- e. CoPilot's Bluetooth wizard will not find the Bluetooth GPS receiver if your Pocket PC's Bluetooth manager currently has a connection to the Bluetooth GPS receiver. Please make sure that all Bluetooth GPS connections are deleted from the Pocket PC's Bluetooth manager

## 5. Unable to Get a GPS Fix

If you can't get a GPS signal after setting up your receiver, ensure that your Bluetooth GPS receiver is switched on, charged up, and has a clear view of the sky. It may take up to 15 minutes to get a GPS fix the first time you use the device. To decrease the time it takes to acquire a GPS Fix, please remain in a stationary position. To avoid unnecessary delays, make sure that your Pocket PC date and time are properly set.

## In-Vehicle Hardware Setup

**WARNING:** Never leave GPS receiver in closed vehicle that exceeds 140° F.

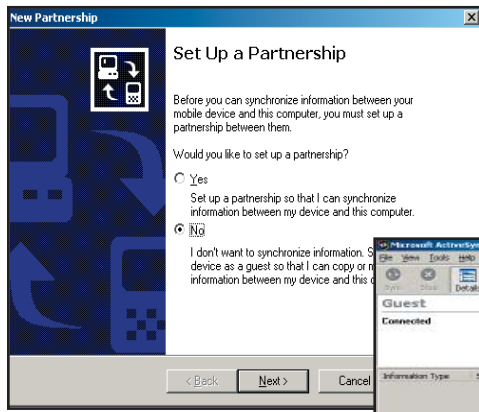
**If you have a vent mount and in-vehicle power adapter:**

1. **After turning your engine on**, attach the cable to the Pocket PC and insert it into your vehicle's cigarette lighter socket. Make sure it is firmly seated (the red light should be on).
2. Attach the vent mount clips to the vent in your vehicle, in a position that will allow you to be comfortable as you view and operate CoPilot.
3. Slide the Pocket PC into the vent mount, and make sure it is turned on.

## Connecting Your Pocket PC

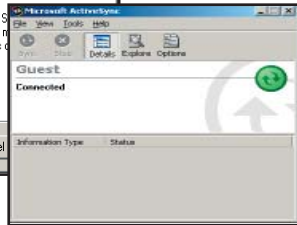
**NOTE:** If a Quickstart installation memory card was included with your purchase of CoPilot, you do not need to do this.

In order to successfully transfer data from your desktop to your Pocket PC, you must have *Microsoft ActiveSync 3.1* (or later) installed. This software is necessary to connect the two machines and is provided by your Pocket PC manufacturer. If you did not receive this software with your mobile device, contact the distributor immediately.

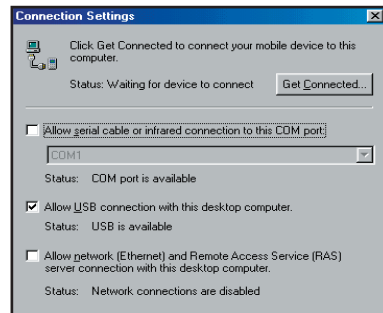
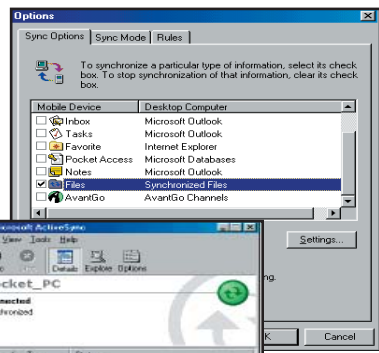


1. When connecting your Pocket PC, if you have not set up a partnership between your Pocket PC and your desktop, you will be prompted to do so. This is not required. If you choose not to set up a partnership, select **Guest**

partnership, and you will be logged in as a *Guest* and ready to transfer data between machines.



2. If you have set up a partnership in the past, or choose to do so at this point, be sure to allow your Pocket PC to synchronize with your desktop/laptop prior to launching CoPilot.



**NOTE:** If your desktop/laptop computer does not seem to be recognizing the connection with your Pocket PC, select **Connection Settings...** from the drop-down **File** menu, and make sure you're connected using the appropriate Port. Then click **Get Connected...** in the **File** menu and follow the on-screen instructions.

## Uninstalling a Previous Version

If you have a previous version of CoPilot installed, uninstalling before you install a newer version is optional.

**NOTE:** If you're uninstalling CoPilot from a Pocket device and installing the same version on another device, you must deactivate the software on the first device before installing it again.

**When uninstalling CoPilot, your GPS receiver cannot be attached.**

Before uninstalling, you must disconnect the receiver and perform a soft restart. Then follow the steps outlined below:

### (1) On your Pocket PC:

**NOTE:** It is recommended to perform a soft reset on your Pocket PC before and after uninstalling CoPilot.

1. Tap the **Start** menu and select *Settings > System > Remove Programs*
2. Select the CoPilot application and tap **Remove**.
3. Select *Pocket Speech* and tap **Remove**.
- 4a. If you stored map data on a storage card:
  - i. Delete the CoPilot folder on the storage card. Tap **Start**, then *Programs > File Explorer > My Device > SD Card*, then tap and hold on the CoPilot folder and select **Delete** from the menu.
- 4b. If you stored map data on your device memory:
  - i. Delete the CoPilot folder on *My Device*. Tap **Start**, then *Programs > File Explorer > My Device*, then tap and hold on CoPilot and select **Delete** from the menu.

### (2) On your Desktop/Laptop computer:

1. Select **Start** menu > *Settings > Control Panel*.
2. Double-click **Add/Remove Programs**.
3. Select the CoPilot application and click on the **Remove** button.
4. If asked to confirm the removal of CoPilot and all of its components, select **Yes**.
5. If asked to remove shared files during the uninstall process, select **No To All**.
6. Select **Start > Search > Files or Folders** and find the CoPilot folder.
7. Right-click the CoPilot folder and select **Delete**.

# Installing CoPilot

**NOTE:** After the CoPilot Pocket PC installation, your Pocket PC will automatically be soft reset. It is recommended that you exit any open applications and save any open files before starting the Copilot installation.

## Installing From a Quickstart Installation Memory Card:

1. Set up your mobile device and charge the battery following the instructions in the device's manual.
2. You must set the correct date and GMT time on your mobile device for optimal GPS functionality.
3. Your CoPilot Live satellite navigation software is supplied pre-loaded on a storage card. Insert your CoPilot storage card into the slot of your mobile device.
4. Once the CoPilot storage card is inserted, CoPilot will install automatically with the following on-screen steps:
  - a. Safety and license agreement: Select 'I accept'.
  - b. GPS technology information: Select 'OK'.
  - c. Two applications will then be installed: CoPilot Pocket PC and Pocket Speech.
5. If setup does not start automatically after inserting the card, you can setup CoPilot manually:
  - a. Tap **Start > Programs > File Explorer**.
  - b. Browse to the **Storage Card**.
  - c. Tap on the **2577** folder.
  - d. **'Autorun'**.

**NOTE:** CoPilot will need to be reactivated within 3 days.

## Installing From CD's:

Your desktop/laptop and Pocket PC should both be turned on. The cradle/cable for your mobile device must be connected to your desktop through either a USB or Serial port. Your Pocket PC should be connected to your desktop via ActiveSync (see p. 4).

## Installation Steps:

Step 1: Insert the CoPilot Install Disc into your CD-ROM drive. After a few seconds, the Installation Wizard will open. Follow the instructions, entering your **Installation Product Key** when prompted. This Product Key can be found on the cover of your printed CoPilot *Quick Start Guide* or on the supplied Product Key card.

The CoPilot application will be installed to your desktop PC and to your Pocket PC separately. CoPilot's Pocket PC installation is a two step process: 1) first the Speech option you selected will be installed, then 2) the CoPilot application will be installed. Before the Pocket PC installation begins, it will ask if the default location (the device's storage memory) is where you want the application to be placed.

Step 2: When the installation is complete, a CoPilot icon will appear on your desktop. Click **Finish** to close the Installation Wizard.

Step 3: The first time you open CoPilot on your Pocket PC, you will be asked to activate the product (see p. 6).

## Product Key Entry and Activation

The first time you launch CoPilot on your Pocket PC you will be prompted for your product key. You can find this key behind the scratch-off panel on the supplied product key card. Scratch off the panel and input the product key carefully. Press **Done**.

**TIP:** It is recommended that you switch off T9 predictive text entry when inputting your product key.

You will now be asked to activate your CoPilot license within 3 days. Select one of the three methods below to activate your CoPilot license. Alternatively, press **Menu** followed by **Later** if you would prefer to activate afterwards at your convenience, within the next 3 days.

### Three Ways to Activate:

#### 1. Recommended: Automatic Activation using your Pocket PC's Wireless Internet Connection

- a. When prompted to activate, Tap "**Next**" to begin the process.
- b. Enter your email address and tap "**Next**" to automatically activate.
- c. Once complete, you will see the message '**license activated successfully**'. Select **Finish**.
- d. Activation is now complete.

#### 2. Automatic Activation via an Internet-connected Desktop PC or Laptop

Connect your Pocket PC to an Internet-enabled Desktop or Laptop using the supplied Synchronisation cable, and Microsoft ActiveSync software on your desktop PC or Laptop. Make sure your desktop/laptop is connected to the Internet, then follow the steps outlined above.

#### 3. Manual Activation (requires an Internet-connected computer)

- a. When prompted to activate, Tap "**Next**" to begin the process.
- b. Enter your email address and tap "**Next**".
- c. Check the box that says "**Check Here if you do not have any access to the internet**" and tap "**Next**".
- d. On the next screen you'll see your Product Key and License ID. You need this information to manually activate CoPilot as in the following steps:
- e. On a desktop/laptop go to the Internet site <http://activate.alk.com> and enter the information. You will be given an activation code

- f. Enter the activation code into the Pocket PC when prompted and tap "**Next**".
- g. Once complete, you will see the message '**license activated successfully**'. Select **Finish**.

## Changing the Voice Option at Any Time

### To change the Pre-Recorded sound files option:

1. From the *Home* screen select **Menu > Trip > Settings**.
2. Select **Language and Speech**.
3. Use the up and down arrows to choose a language and voice option.
4. Tap **OK**.

## Speech Volume

To hear CoPilot's voice prompts, the volume on your Pocket PC must be turned all the way up. In the Pocket PC **Start** menu, go to **Settings** and tap on **Sounds and Notifications**. Under **System Volume**, move the slide bar all the way to the right. Or use your Pocket PC's keypad when CoPilot is open: tap up until you reach the maximum volume.



# Map Download to Your Pocket PC

**NOTE:** If your CoPilot product came with a Quickstart installation memory card, you don't need to download map data (it's already on your Quickstart card). You can skip to *Using Your Pocket PC for Guidance*, p. 16.

To use CoPilot on your Pocket PC, you first need to download map data from your desktop or laptop computer to your Pocket device. You select the data to download from one or more regions ("data areas") that you specify in the CoPilot application on your desktop. It's a simple 4-step process.

## Step 1: Specify Where Data Will Be Stored



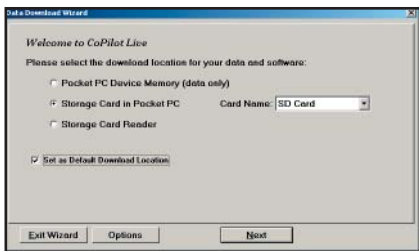
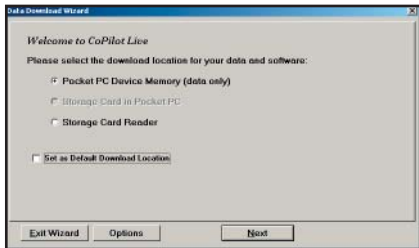
To begin the data download process, open the CoPilot application on your desktop/laptop, then click the Data Download Wizard icon or pick **Data Download Wizard** from the **File** menu.

CoPilot gives you three options for downloading data:

- 1) directly to the Pocket device's memory,
- 2) to a Storage Card in the device, or
- 3) to a Storage Card through a Storage Card Reader.

You will be prompted to enter one of these choices before you can download. CoPilot will detect which options are available to you.

**NOTE:** If there is data stored on the device's memory and also on a Storage Card in the device, CoPilot will use the map data on the Storage Card by default. To have it use the device's memory, you must remove the Storage Card.

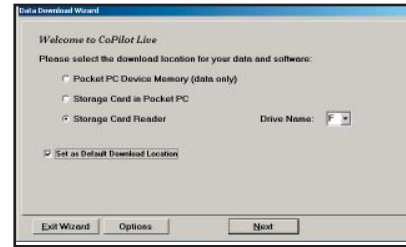


### 1. To download to Pocket PC

**Device Memory:** (In this example, CoPilot has detected that there is no Storage Card in the device.) Click **Next** to go to the *Data Selection* window. See *CoPilot QuickStart*, this page, for a description of software included in downloads. See p. 12 for **Options**.

### 2. To download to a Storage Card in the device:

(In this example, CoPilot has detected that all options are available.) Select a storage card name from the drop-down pick list, then click **Next** to go to the *Data Selection* window. See *CoPilot QuickStart* to the right for a description of software included in downloads. See p. 12 for **Options**.



3. To download to a Storage Card through a Card Reader: (In this example, again all options are available.) Pick the drive letter associated with your Storage Card Reader, then click **Next** to go to the *Data Selection* window. See *CoPilot QuickStart* below for a description of software included in downloads. See p. 12 for **Options**.

**NOTE:** You can also download to a Storage Card through a PCMCIA adapter. Simply identify the drive letter associated with the adapter under the Storage Card Reader option.

## CoPilot QuickStart Storage Card Application Download

If you are downloading map data to a Storage Card or Storage Card Reader, you have the option to download a complete, ready-to-use "QuickStart" version of CoPilot along with the data. Having the QuickStart version on your Storage Card ensures that CoPilot will be available even if you experience technical problems with your Pocket PC and need to perform a hard reset. (During a hard reset, all installed applications are deleted from the Pocket PC.) **Inserting a storage card with the QuickStart version on it will automatically install CoPilot, and your map data will already be there!**

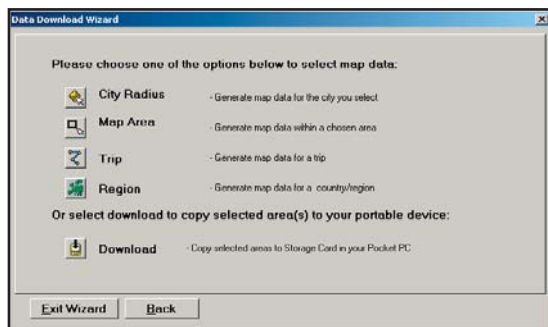
The QuickStart option can be turned on or off in the final step of the download process (see p. 12). **By default this option is active and the QuickStart download will be executed each time you download map data.**

The QuickStart needs **10 MB** of space on your Storage Card. Once the QuickStart has been copied, you can save time the next time you download data by unchecking the **Create QuickStart** option in the final Data Download Wizard screen before proceeding to download. You will also want to uncheck this option if you do not have enough room on your Storage Card for it.

If the QuickStart is copied onto your Storage Card and you need to remove it, simply delete the folder that contains it. The folder will be named "2577".

# Data Download

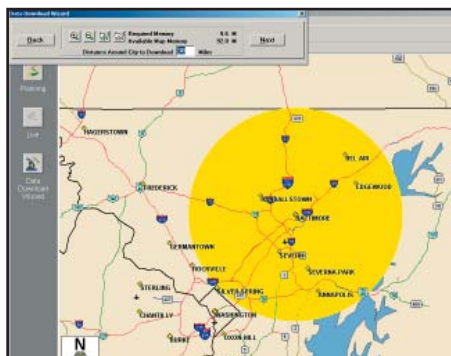
## Step 2: Choose a Data Selection Method



After you specify a location where the data will be stored, you will be prompted to select a region on the map to download. CoPilot allows you to download data using one of the three methods described below.

See *Data Download Step 3* beginning on p. 9 for step-by-step instructions for downloading data to your Pocket PC using each of these three methods.

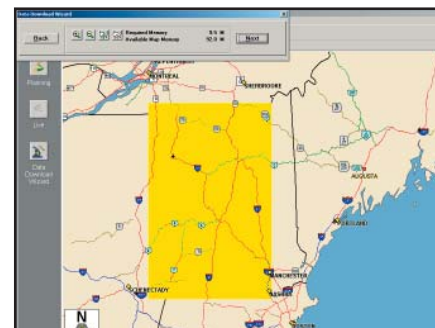
**City Radius** - This method allows you to quickly select data in the shape of a circle surrounding any city on the map. In the Data Download Wizard you type a city name and state abbreviation or ZIP code and enter the number of miles you would like the radius to extend around the city, then click **Next**.



City Radius

The Wizard displays a map that shows the city and the radius you chose. At this point you can zoom the map in and out using zoom buttons and adjust the size of the data area by altering the radius of the circle.

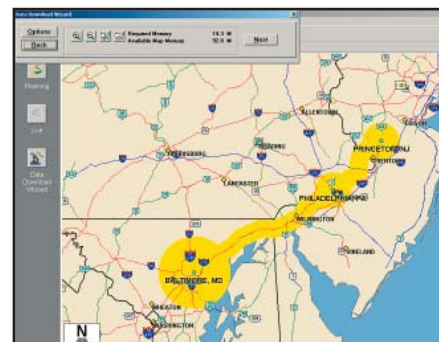
**Map Area** - This method of selecting data allows you to choose an area of data by drawing a box on the Data Download Wizard's map screen. In the Wizard, you enter a city name near which you would like to select data, then click **Next**. The map will zoom to that location. Then you create a box around the desired area by clicking and dragging your mouse across the map. The street-level data within that box will be selected.



Map Area

You can zoom the map in and out using the zoom buttons and adjust the size of the data area by redrawing the box.

**Trip** - The Trip method of selecting data is by far the most customizable method. This option allows you to run a trip and select street-level data specific to that trip, thereby avoiding unneeded data and saving valuable memory space. Once the trip is run, the Data Download Wizard automatically selects circles of data around your origin and destination, and a corridor of data along your route.



Trip

You can then click **Options** to adjust the radius of the circles and the width of the corridor.

The Trip Itinerary for each trip you download will be stored on your Pocket PC (see *Trip Transfer*, p. 12). Multiple trips can be downloaded to the Pocket PC for later use.

**Region** - This method lets you download map data for a whole country or region. The region you select must be included in the region that was installed on your Pocket PC, otherwise a warning will appear and you won't be able to download data. Region downloads generally take the longest amount of time, depending on the size of the selected region.



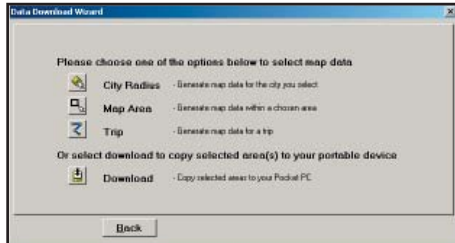
Region

# Data Download

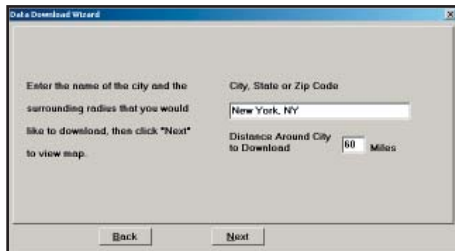
## Step 3: Select Your Data

Use any of the three methods covered on the following pages (**City Radius**, **Map Area**, or **Trip**) to select one or more regions and then download your data.

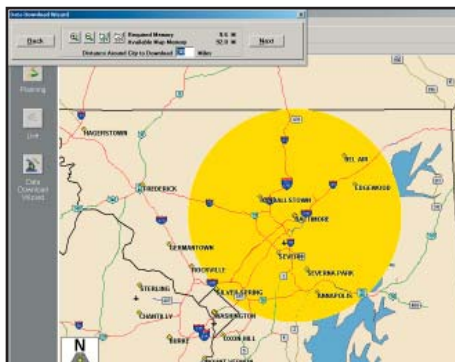
## City Radius



1. Click the **City Radius** icon.

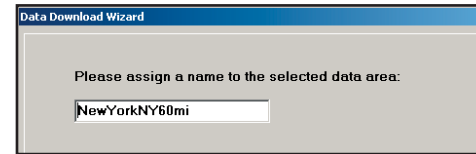


2. Enter a **City, State or ZIP Code**, and a **radius** around the area that you would like to download. Click **Next** to verify that the area is correct.

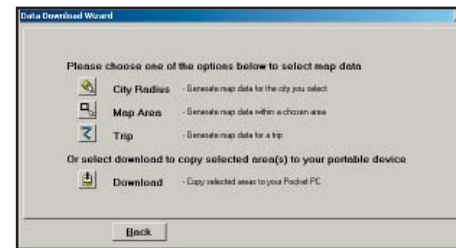


3. Using the Data Download Wizard toolbar you can zoom in or out, change the radius, or go back to the previous screen. When you are satisfied with your selection, click **Next**.

**Note:** CoPilot's available memory calculations subtract a certain amount from the available memory on your storage card (if you are using one) to account for support files.

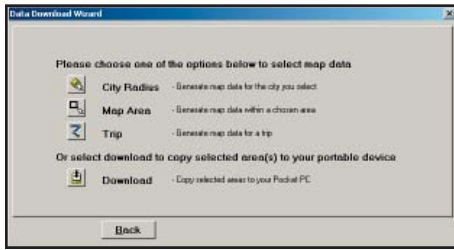


4. Name the selection, then click **Next**.

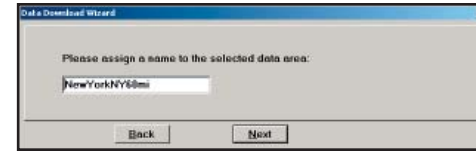


5. You will return to the *Data Selection* menu where you can select another data area if you like, using any method. When you finish selecting data areas, click the **Download** icon and you will be taken to the final screen where you can build your download.

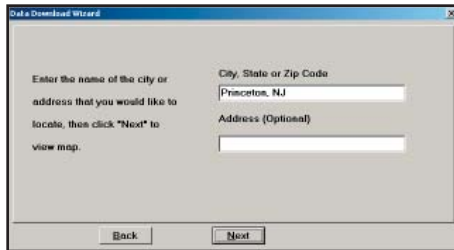
# Map Area



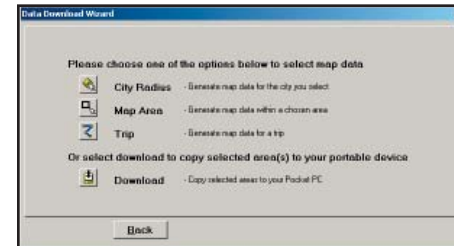
1. Click the **Map Area** icon.



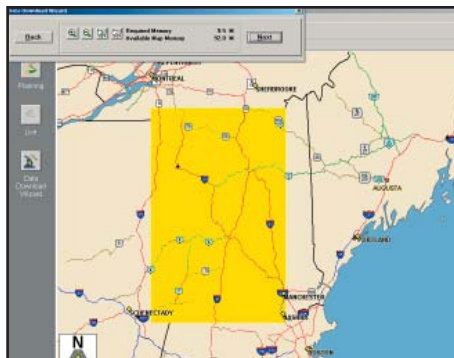
4. Name the selection, then click **Next**.



2. Enter a **City, State or ZIP Code** (address optional) within the area that you would like to download. Click **Next**.



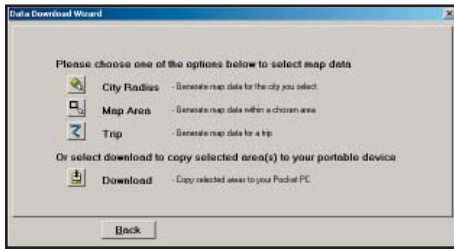
5. You will return to the *Data Selection* menu where you can select another data area if you like, using any method. When you are finished selecting data areas, click the **Download** icon to go to the final screen where you can build your download.



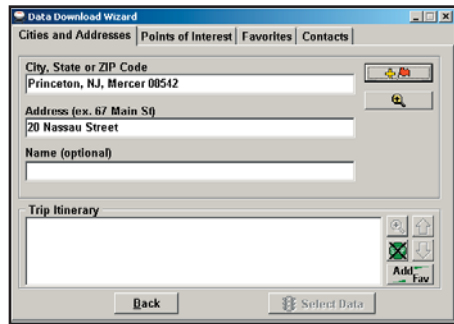
3. **Click and hold the left mouse button and drag the cursor** to draw a box around a desired area. The size of the area will be displayed in the toolbar. Click **Next**.

**Note:** CoPilot's available memory calculations subtract a certain amount from the available memory on your storage card (if you are using one) to account for support files.

# Trip



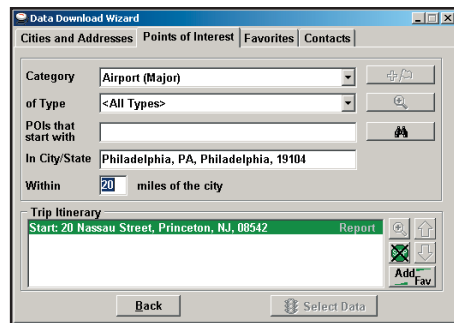
1. Click the **Trip** icon.



2. You now have three options for entering stops on your trip. If you choose the *Cities and Addresses* tab you will need to enter a **City, State or ZIP Code**, press <Enter>, and click the **Add Stop** button.



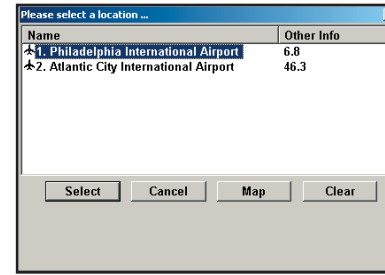
You may enter one or multiple destinations. Use the buttons to the right of the *Itinerary* to zoom to a stop on the map, change the order of stops, or delete a stop.



3. If you choose the *Points of Interest* tab, enter a **City, State** or a ZIP code and click the **Find** button.



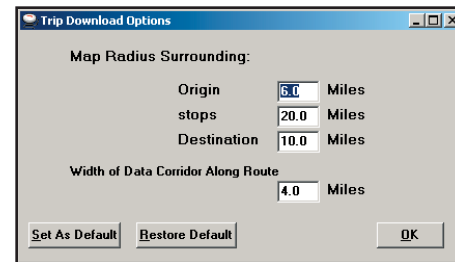
You can specify search parameters by selecting a POI **Category** and/or **Type** (this will speed up the search).



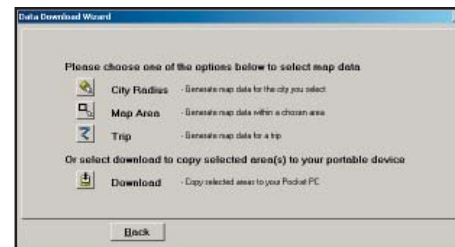
- 3a. Highlight a selection, click **Select**, then **Add Stop**. When all your stops have been entered, click **Select Data**.



4. By default a 20 mile radius around all stops and a width of 4 miles along the corridor which connects them will be highlighted. **Note:** CoPilot's available memory calculations subtract a certain amount from the available memory on your storage card (if you are using one) to account for support files.



5. To customize these distances for any trip, click **Options** and type a distance in the appropriate box.



6. You will return to the *Data Selection* menu where you can select another data area if you like, using any method. When you are finished selecting data areas, click **Download**. Trip itineraries that were created using the *Trip* download method will be transferred along with map data (see p. 12 for details).

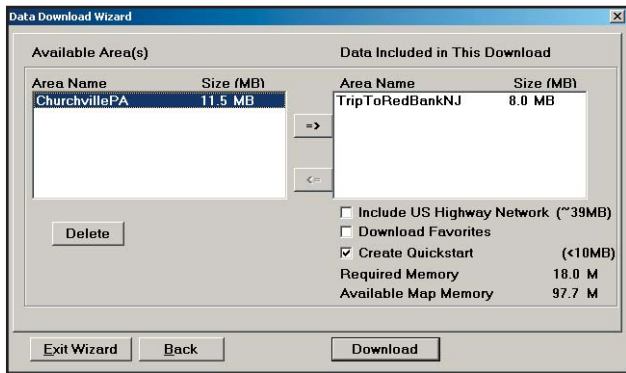
# Data Download

## Step 4: Download the Data

When you're ready to execute a download, the Wizard will display a list of **Available Area(s)** for download on the left side of the window. To designate an area to include in the download, click on it and then click on the right arrow button to move it to the **Data Included in This Download** list.

Notice that the amount of available map memory and the memory required for all the areas on the Included list is shown under the list. **NOTE:** CoPilot's available memory calculations subtract a certain amount from the available memory on your storage card (if you are using one) to account for support files.

If you need to move an area off the *Included* list, click on it and use the left arrow button. To delete an area from memory, click on it and click **Delete**.



**IMPORTANT:** Each data download overwrites the data that is already on your Pocket PC. If any data areas are already loaded on your Pocket PC, they will be overwritten by the new download. Therefore, your download must include all areas that you wish to have available on your Pocket PC.

(Only available if Pan-Europe data is installed, see p. 46) Check **Include US Highway Network** to download CoPilot's complete U.S. Highway Network along with your data. This additional download requires approximately 58 MB of space on your Pocket PC. When this network is loaded, major roads, cities, and some points of interest outside your selected data region will be shown on the map and you'll be able to receive guidance as you drive anywhere in the United States.

Check **Download Favorites** to download your Favorites list from the Trip Planner window on your desktop along with map data. These addresses will then be available as Favorites for trip entry on the Pocket PC.

**RECOMMENDED OPTION:** It is recommended that you leave **Create QuickStart** checked (see p. 7 for a description of this feature). However, you may uncheck it if you don't want the QuickStart copied with your download.

# POI Download Options

When you download a data region, you'll get all roads within that region. Also included with each download are regional points of interest (POI) such as gas stations, hotels, restaurants, visitor attractions, etc.

CoPilot now lets you control the number and types of points of interest that get downloaded along with your data areas. You can save space on your Pocket PC by eliminating categories of POI that you're not interested in seeing.

To select which POI categories you want, choose **POI Download Options** from the **Edit menu** in the desktop application or, when you first open the Data Download Wizard, click the **Options** button in the Wizard. In the window that opens, check the categories you wish to select. Click the plus sign next to each category to see the included sub-categories.

Click **Save Settings** to save the set of categories you create. Click **Restore Default** to return to CoPilot's default categories.

## Adding OV2 POI Sets

CoPilot supports OV2 POI files. You can copy any OV2 file into the CoPilot\Save folder on your storage card to get immediate access to the POIs it contains.

**EXAMPLE:** Copy an OV2 file named 'Speedcams' to Storage Card\CoPilot\Save. The next time you do a POI search you will see 'Speedcams' as a POI Type in the Custom Category.

## Trip Transfer

CoPilot now transfers whole trips to your Pocket PC when you use the **Trip** option for data downloading. Any trip you create for download, including its itinerary, is transferred along with the surrounding data corridor and will become the current trip on your Pocket PC.

The **Trip** download option creates a .TRP file that is saved to the "Save" directory on the Storage Card or CoPilot installation folder, depending on where you selected to download data to. Subsequent downloads will add more .TRP files to this folder. The number of trips that may be stored is limited only by the available memory on your Pocket PC. If multiple trips are downloaded, the last one to be added will open as the current trip. Use the **Saved Trip** stop entry option on your Pocket PC to open stored .TRP files.

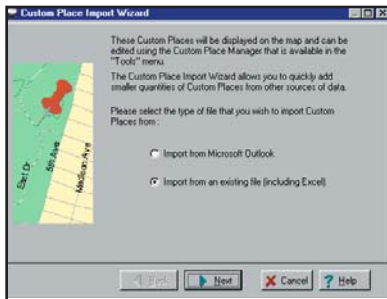
# Importing Custom Places

CoPilot's Custom Place Import Wizard enables you to import addresses from your Outlook Contacts database, an Excel file, or text file. (If you are using another type of database or contact manager, you can export your contacts/locations to an Excel or text file before importing them into CoPilot.) These points are then added to CoPilot's POI database in a category and type of your choice (the default category is "Custom"). Once they are in the database, they are displayed on maps as pushpins and included in search results when you search for points of interest on your Pocket PC or in the Trip Planner window on your desktop/laptop.

**NOTE:** CoPilot now allows importing of multiple POIs with the same name (e.g. an entire database of "Starbucks").

To access the Wizard, choose **Import Custom Places** from the **Tools** menu in Planning Mode on the desktop, then follow the step-by-step instructions given by the Wizard.

## Steps for Importing:



1. In Planning Mode on your desktop/laptop, choose **Import Custom Places** from the **Tools** menu to open the Import Custom Places Wizard.

2. Choose **Import from Microsoft Outlook** or **Import from an existing file** (this can be a .txt text file or an Excel file). Click **Next**.



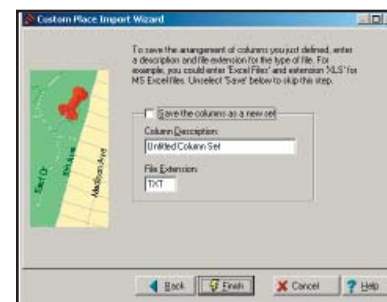
3. In the next Wizard screen, type the path to the file you want to import or **Browse** for it, and use the **Category** pick list to indicate a POI category for your imported places (by default they are assigned to "Custom"). You can also choose a **Type** from the pick list. To edit the type name, highlight it on the pick list and click **Edit Type Name** below. Click **Next** when ready.



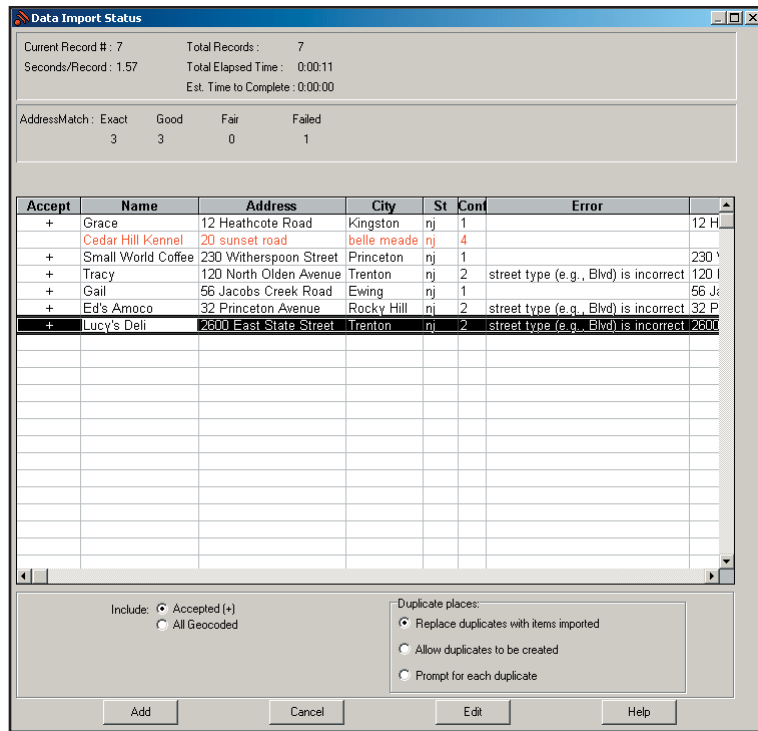
4. In the next screen you'll see the data from your file sorted into columns. If the columns you see in the screen have not sorted the address data correctly, you need to indicate which delimiter CoPilot should recognize when it separates the fields in your file into columns. Each field — e.g. name, street address, city, state, etc. — needs to be separated by a delimiter such as a tab, semicolon, or comma. If your file uses a delimiter other than a comma, tab, or semicolon, click **Other** and type the delimiter in the box to the right. If the first row of your file consists of column headings, you should check **Column headings in first row**. Click **Next** when ready.



5. Now, following the instructions on the screen, click each column heading and match the column headings with your data. To be accepted by CoPilot, each imported place must have at least four fields: **Name, Address 1, City, and State**. Click **Next** when ready.



6. In the next screen, following the instructions, you can assign a name to the set of columns you just defined to save you time the next time you import addresses. To skip this step, uncheck **Save the columns as a new set**. Click **Finish**.



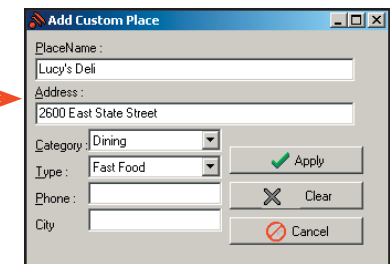
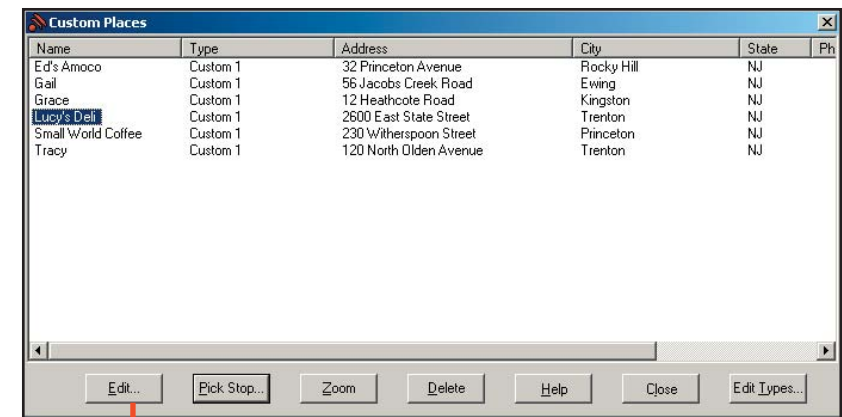
- When processing is finished, the Data Import Status window shows you how many places in your file were matched with addresses in the CoPilot database. A plus sign in the **Accept** column indicates a match. Places that failed to match appear in red and do not have a plus sign.
- To edit a failed or incomplete match, highlight it and click **Edit** (see *Editing Custom Places*, next page). POI addresses can also be edited after they are added to the database using the Custom Place Manager.
- When you are satisfied with the list of addresses, click **Add** to add these places to the CoPilot database.

Options below the list let you 1) choose whether to add all addresses on the list to the database, or just those that were accepted, and 2) determine how CoPilot will handle any address that duplicates one already in the database.

## Editing Custom Places in the Database

After custom places have been added to the database, they can be edited at any time. Select **Manage Custom Places** from the **Tools** menu, then highlight the custom place you wish to edit, click **Edit**, and make your changes. Click **Apply** when finished.

**NOTE:** By default, addresses entered as Custom Places are assigned to the Custom POI category. You can change this assignment at any time by selecting another **Category** from the drop-down pick list as you edit.

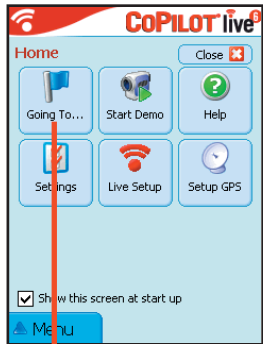




# Using Your Pocket PC for Guidance

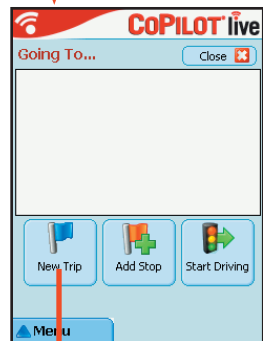
In CoPilot's Guidance Mode you will receive turn-by-turn route guidance information as you travel. For your safety the Driver Safety Screen will hide maps when your speed exceeds 10 m.p.h. to avoid distractions.

For **IN-VEHICLE HARDWARE SETUP**: See *Hardware Setup*, p. 3.



1. To launch CoPilot, tap **Start**, choose **Programs** from the drop-down menu, then tap the **CoPilot** application.

2. **The first time you use CoPilot**, you will be asked to enter a nearby city. The program may take a few minutes to acquire a GPS signal and determine your position. If a signal has not been obtained after several minutes, refer to *Troubleshooting*, p. 45.



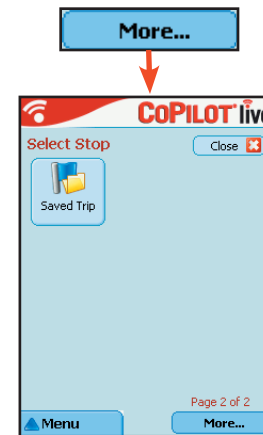
3. The *Home* screen gives you several choices:

- **Going To** to enter a destination and receive guidance
- **Start Demo** for first-time users
- **Help** topics about basics such as trip entry, hardware setup, and route options
- **Settings** to change CoPilot routing, guidance, and map options
- **Live Setup** for live communications
- **GPS** to set up your GPS receiver

4. Tap **Going To**. The *Going To* screen will list your stops. From here you can add a stop, start a new trip (deleting the old one), or tap **Start Driving** to begin receiving guidance to your destination(s).



5. Tap **New Trip** to enter one or more destinations in the *Select Stop* screen and begin driving. (Tap **More...** to see additional ways to enter a destination.)



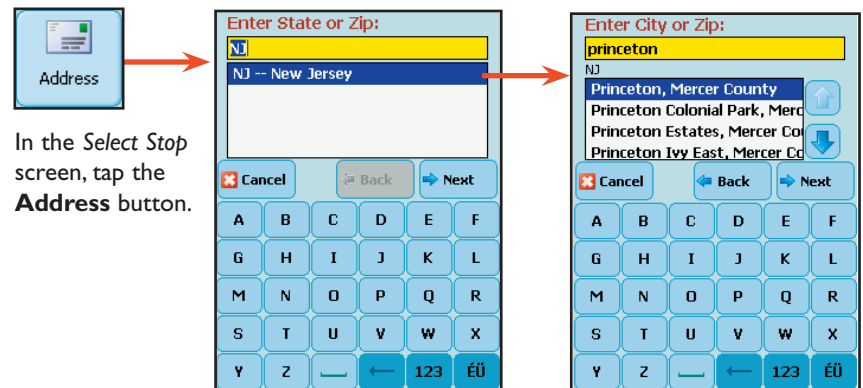
6. The *Select Stop* screen provides you with several different ways to enter a destination (described on the following pages):

- Enter a new **Address**
- Program or enter your **Home** address
- Program or enter your **Work** address
- Select from your **Favorite** list
- Enter a **Contact** from Outlook Express
- Search for a **Point of Interest (POI)**
- Pick a stop off the map (**Pick on Map**)
- Enter an **Intersection**
- Enter a **Latitude/Longitude** point
- Enter a previously **Saved Trip**

## Address Entry

**NOTE:** There is no need to enter a starting point. CoPilot uses GPS positioning to determine your location automatically.

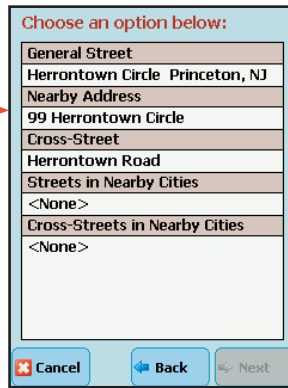
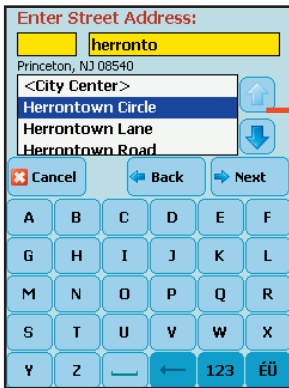
Address entry is a step-by-step process in which you enter the state or ZIP code, city, and house number/street name in separate screens. As you type each entry, matches in the database appear on a pick list below. Tapping an item on the list enters it, then you tap **Next** to confirm and move to the next screen.



In the *Select Stop* screen, tap the **Address** button.

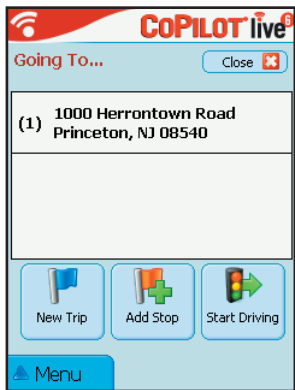
1. Using the keyboard, type the name of a state — as you type, the scroll list will move to that state. Tap it on the list, then tap **Next**.

2. Start typing a **City** name or **ZIP Code**. When a match appears on the list below, tap it and then tap **Next** to continue.



3. Enter a house number if you like (it's optional), then start typing a **Street name**. When a match appears on the list below, tap it, then tap **Next**.

4. If an exact database match is not found, you'll be shown the available address options. CoPilot will give you at least one of these options: the **General Street** you entered, a **Nearby Address**, a **Cross Street** on the street you entered, or one of several **Streets in Nearby Cities**. Tap your choice, then tap **Next**.



5. After entering a destination, you will be taken back to the *Going To* screen. The destination you just entered will be listed as the first stop on your trip.

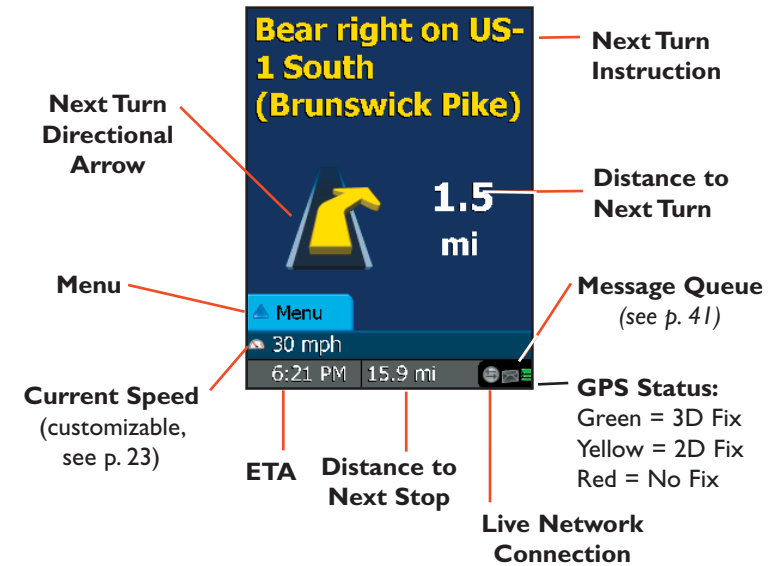
At this point you can tap **Add Stop** to enter additional stops, **New Trip** to delete all stops on this trip and begin a new one, or **Start Driving** to begin receiving guidance to the destination(s) you entered.

6. **To begin your trip**, simply tap the **Start Driving** button and start driving! Once your position has been determined (this can take a few seconds), CoPilot will speak directions out loud to you, and your position and next turn information will be displayed on the screen as you drive.

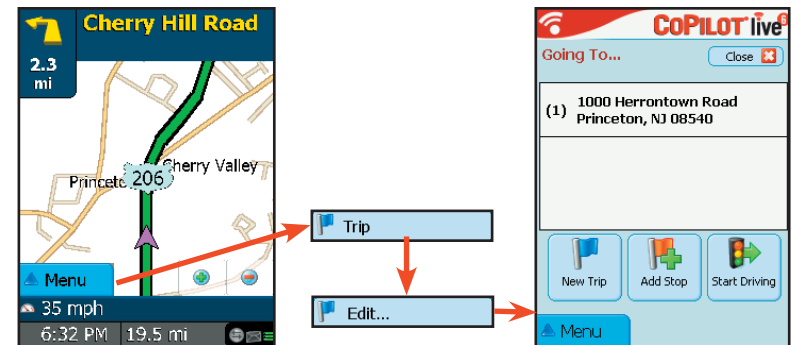
## Start Driving!

After entering one or more destinations, start driving and enjoy CoPilot's spoken instructions, continuously updated maps and ETA's, and automatic route recalculation capabilities.

A text-only Driver Safety Screen will replace the Map Screen when your speed exceeds **10 m.p.h.**



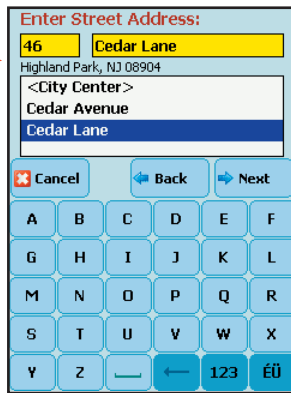
**To return to the Going To screen to edit your trip at any time**, tap **Menu > Trip > Edit**.



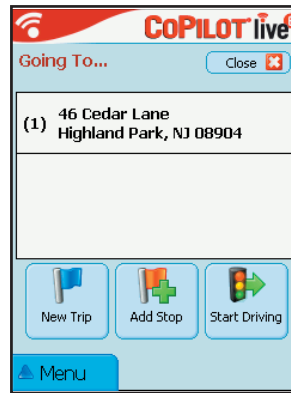
## Entering a Home Address



In the *Select Stop* screen, tap the **Home** button. The first time you use this button, you will be prompted to enter your home address.



Enter your home address the same way you enter a new address (described on p. 15).

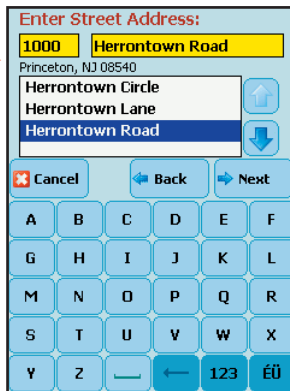


The next time you tap **Home**, your home will be entered as a destination. To change your home address, tap **Menu > Trip > Settings** then tap **Favorites** (see p. 28).

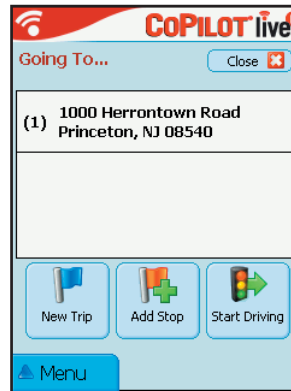
## Entering a Work Address



In the *Select Stop* screen, tap the **Work** button. The first time you use this button, you will be prompted to enter your work address.



Enter your work address the same way you enter a new address (described on p. 15).

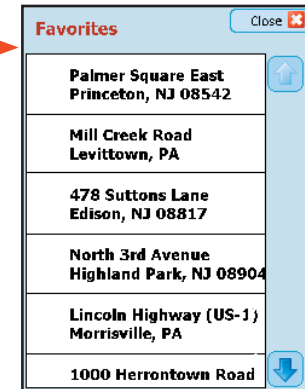


The next time you tap **Work**, your work address will be entered as a destination. To change your work address, tap **Menu > Trip > Settings** then tap **Favorites** (see p. 28).

## Favorites



In the *Select Stop* screen, tap the **Favorite** button. A scrollable list will appear, providing quick access to the last 50 destinations that were entered.

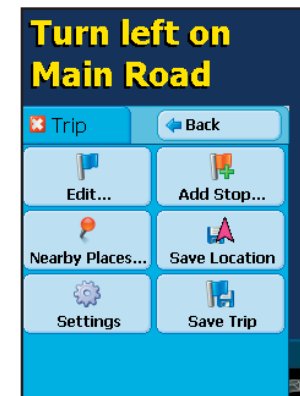


Tap a Favorite on the list to enter it as a destination. To change which Favorite is assigned to the **Home** or **Work** buttons, tap **Menu > Trip > Settings** and tap **Favorites** (see *Settings*, p. 26).

**NOTE:** When your Favorites list is filled (50), each new address will replace the address that has been inactive for the longest period of time.

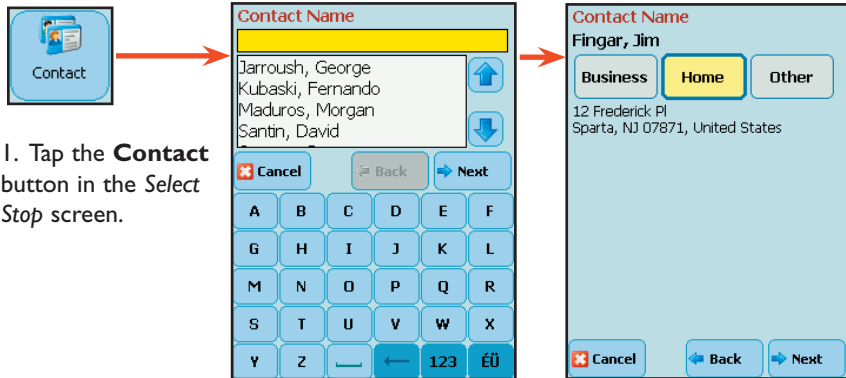
### To Save Your Current Location As a Favorite:

You must be receiving GPS data to save your current location as a favorite. Tap **Menu > Trip > Save Location**. A prompt will ask you to assign a location name to your current location. After you enter a name, your current location will be saved in the Favorites list.



# Contact Integration

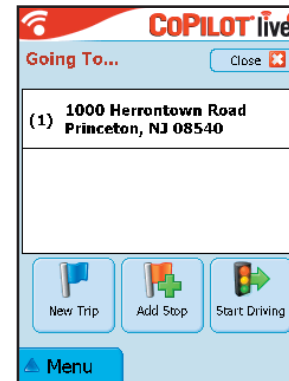
CoPilot allows you to link directly to Outlook to retrieve address information. With just a few of quick taps of the stylus, you can enter a contact's home and/or work address as your destination.



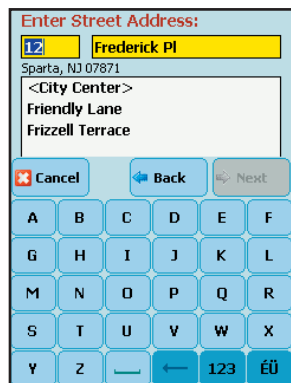
1. Tap the **Contact** button in the **Select Stop** screen.

2. Type the first letters of your Contact's first or last name.

3. Select a name from the Contact lists, and with your selection highlighted, choose an address type (**Business**, **Home**, or **Other**). The address you select will be displayed below. Tap **Next** when ready.



5. The Contact address will be added to your trip itinerary as a stop.



4. If necessary, CoPilot will prompt you to correct any part of the address in your Contact database that does not result in a perfect match — you might be prompted to edit the city, state, street, or house number so CoPilot can find it.

If CoPilot finds an exact match, it automatically goes to a screen that lets you name the address you entered.

# Finding Points of Interest



In the *Select Stop* screen, tap the **POI** button to search for and/or enter a point of interest as a destination.

**Find a POI**

Retail Outlets

Mall

Name (Optional)

Cancel Back Next

A	B	C	D	E	F
G	H	I	J	K	L
M	N	O	P	Q	R
S	T	U	V	W	X
Y	Z	←	123	€0	

1. In the first POI screen you have the option to choose a **Category** and **Type** of POI from the drop-down pick lists. To narrow your search and cut down on the time it takes, you can also type the first few letters of a place you have in mind. Tap **Next** to continue.

Matches	Mile
Princeton University	0.1
Burger King	0.1
Lahieres Restaurant	0.1
The Annex	0.1
Winberries	0.1
Theresa's Cafe	0.1
Panera	0.1
Triumph Brewing Co...	0.1
The Alchemist & Barri...	0.1
Thomas Sweet Choc...	0.1
Halo Pub Ice Cream	0.2
Uchiban	0.2

Map Expand

Cancel Back Finish

4. When the search process is complete, a scrollable list of matches will appear. In this screen you have several choices, you can:

- Highlight a POI and tap **Map** to preview it on the map (see below)
- Tap **Expand** to expand the area of the search (this can be done twice)
- Highlight a POI and tap **Finish** to enter it as a destination.

**Search POI**

Along current route

Near current location

Near a city

Cancel Back Next

2. In the next screen, you can tell CoPilot to search **Near current location** or **Along current route** if a GPS signal is present.

Or choose **Near a city**, then enter a state and city or ZIP code in the next two screens.

3. Tap **Next** to execute the search.

**Enter State or Zip:**

NJ

NJ -- New Jersey

Cancel Back Next

A	B	C	D	E	F
G	H	I	J	K	L
M	N	O	P	Q	R
S	T	U	V	W	X
Y	Z	←	123	€0	

**Enter City or Zip:**

princeton

NJ

Princeton, Mercer County

Princeton Colonial Park, Merc

Princeton Estates, Mercer Co

Princeton Ivy East, Mercer Co

Cancel Back Next

A	B	C	D	E	F
G	H	I	J	K	L
M	N	O	P	Q	R
S	T	U	V	W	X
Y	Z	←	123	€0	

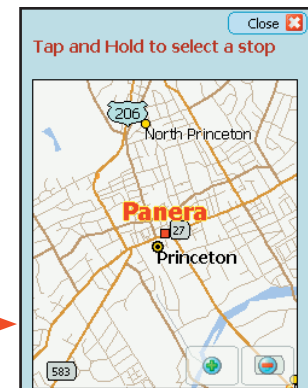
## Map Preview of a POI:

To preview a POI on the map before you decide to enter it as a destination, highlight it on the match list and tap **Map**. In the map screen, a sliding bar lets you zoom the view in and out. Click **Close** to return to the match list. In the *Matches* screen, tap **Finish** to enter the highlighted POI as a destination and return to the *Going To* screen, or **Expand** to run another search **Map** within a larger area.

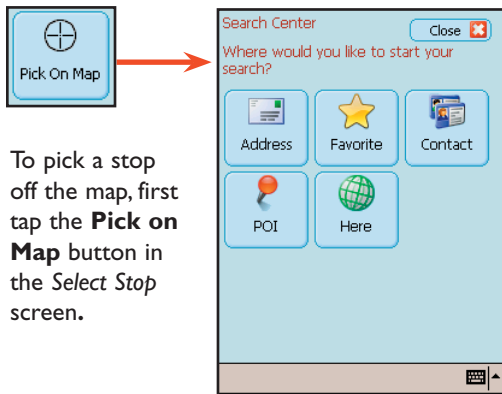
Matches	Mile
Princeton University	0.1
Burger King	0.1
Lahieres Restaurant	0.1
The Annex	0.1
Winberries	0.1
Theresa's Cafe	0.1
Panera	0.1
Triumph Brewing Co...	0.1
The Alchemist & Barri...	0.1
Thomas Sweet Choc...	0.1
Halo Pub Ice Cream	0.2
Uchiban	0.2

Map Expand

Cancel Back Finish

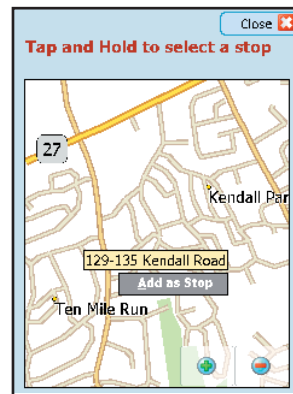


## Pick on Map



To pick a stop off the map, first tap the **Pick on Map** button in the *Select Stop* screen.

Zoom the map to a starting area by entering an **Address**, **Favorite**, **Contact**, **POI**, or select **Here** if you have a GPS signal.

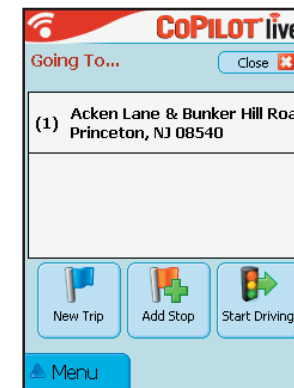
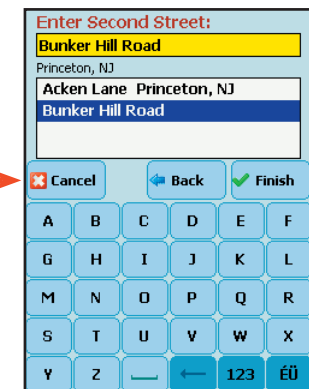
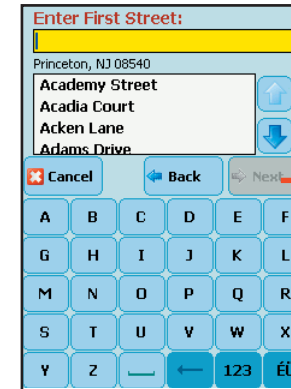


Move the map around, zoom in/out until you find the desired place. Tap and hold to **Add as Stop**.

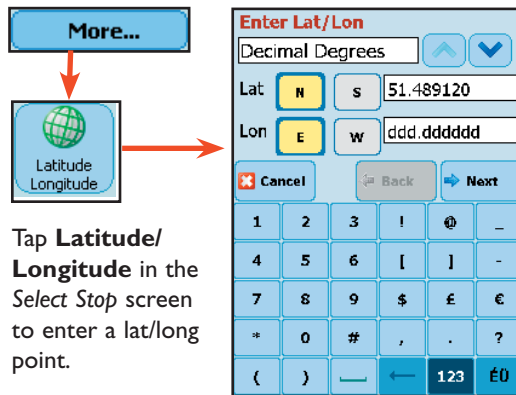
## Intersection



To enter the intersection of two roads, tap the **Intersection** button in the *Select Stop* screen. Intersections are entered just like addresses (see p. 15-16), except that instead of a house number you enter a “First Street” and “Second Street”.



## Latitude/Longitude



Tap **Latitude/Longitude** in the *Select Stop* screen to enter a lat/long point.

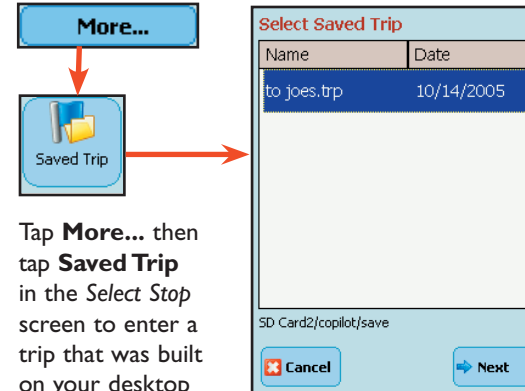
1. Choose a format from the first drop-down pick list. Lat/longs can be entered in **Decimal Degrees, Decimal Minutes, or degrees/minutes/seconds (DMS)**.

2. Enter a latitude and longitude in the appropriate format, using the drop-down pick lists for **N** or **S**, and **E** or **W**.

3. Tap **Next** to add the lat/long you entered as a stop on your trip itinerary.

4. Once the lat/long has been matched, you have the option of assigning a name to the point.

## Saved Trip



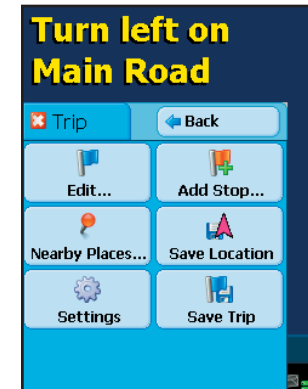
Tap **More...** then tap **Saved Trip** in the *Select Stop* screen to enter a trip that was built on your desktop and transferred to your Pocket PC. (See *Trip Transfer*, p. 12 for more about saved trips.)

1. Highlight a trip (.trp file) in the list of saved trips, then tap **Next**.

All destinations included in the trip will be entered, preserving the stop order of the original saved trip. The trip itinerary will also be included.

## Nearby Places Search

Tap **Menu > Trip > Nearby Places** to do a quick Points of Interest search centered around your current location (requires a GPS fix).



## Closing CoPilot

To exit the CoPilot application on your Pocket PC, select **Menu > Quit**.

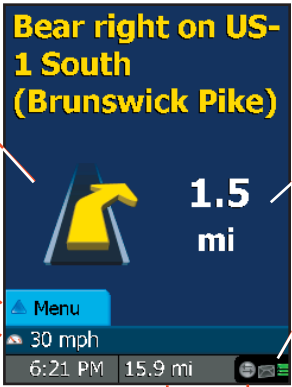
# Driver Safety/Map/Itinerary Screens

**NOTE:** It is not safe to attempt to alter settings on your Pocket PC while you are driving. Either have a passenger make changes, or pull over to a safe area.

Tap **Menu > View** to select how you want the guidance screen to display.

## Driver Safety Screen

Tap **Menu > View > Driver Safety**. The Driver Safety Screen displays a text-only screen when your speed exceeds 10 m.p.h. and is the recommended view for safe driving. When you're within about .6 mile of a turn or driving less than 10 m.p.h., CoPilot automatically switches to the Map Screen display.



**Next Turn Instruction:** Bear right on US-1 South (Brunswick Pike)

**Next Turn Directional Arrow:** (Yellow arrow icon)

**Distance to Next Turn:** 1.5 mi

**Message Queue:** (see p. 41)

**GPS Status:**  
Green = 3D Fix  
Yellow = 2D Fix  
Red = No Fix

**Current Speed (customizable, see p. 23):** 30 mph

**ETA:** 6:21 PM

**Distance to Next Stop:** 15.9 mi

**Live Network Connection:** (Signal strength icon)

**Menu:** (Menu button)

## Map Screen

Tap **Menu > View** and select one of four map options (**Where Am I**, **Next Turn**, **Destination**, or **3D**).

The Map Screen displays when you are traveling at less than 10 m.p.h. and .6 mile before each turn. It combines a large map display and concise text instructions.

At the top of the screen, your current road is shown with next turn directions (a directional arrow and distance to the next turn). Use the **Zoom In** and **Zoom Out** buttons in the lower right corner of the screen to change your view of the map.


At the bottom of the Map Screen are the estimated time of arrival (ETA) at your next destination and distance to that destination, and one customizable data line (see p. 23).

The choices in the View menu include three frame options for the map screen and a "3D" option. See p. 23 for descriptions.



## Itinerary Screen

To see your trip Itinerary, tap **Menu > View > Itinerary**.

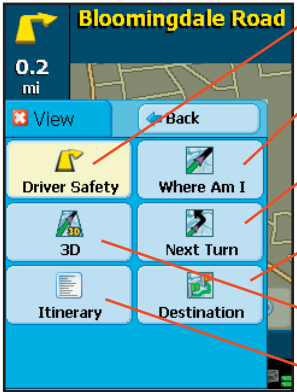


The Trip Itinerary is a scrollable set of driving directions for the current trip. Roads on your route can be avoided using this screen (see p. 25) and stops can be reordered (use the arrow buttons on the toolbar to move them up or down).



## Navigating Through CoPilot Screens

To switch views, tap **Menu > View** and choose a view from the drop-down menu.



**Driver Safety Screen** - Text only, switches to the map below 10 m.p.h.

**Where Am I** - Map screen, frames a close-up view of your current position.

**Next Turn** - Map screen, frames your current position to the next turn.

**Destination** - Map screen, frames the view from your current position to your final destination.

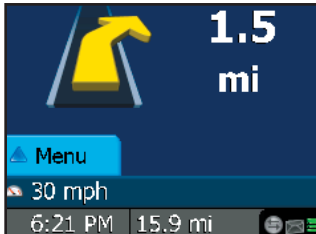
**3D View** - Map screen in 3D.

**Trip Itinerary Screen** - Basic text overview of all your upcoming screens.

## Customizing the Guidance Screens

The line above the ETA in CoPilot's guidance screens can be customized. Tap **Menu > Trip > Settings > Guidance**. Use the **Custom Display** pick list to set this line to show your current road, nearest crossroad, nearest major road, nearest town, ETA, or speed. Another way to change this line is by tapping on it to toggle through the options.

Several map features can also be customized. See *Settings*, p. 26 for all the available options.



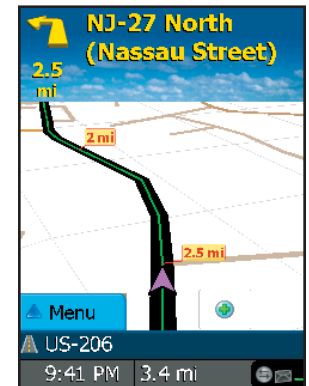
**Customizable Display Line** - 30 mph

## Map Modes

CoPilot gives you a choice of several different display modes for the Map Screen:

### 3D Perspective

CoPilot's two-dimensional default display mode can be changed to a three-dimensional perspective based off an isometric camera angle. The 3D map display contains distance markers to your next turn superimposed on the road.



### Night Mode

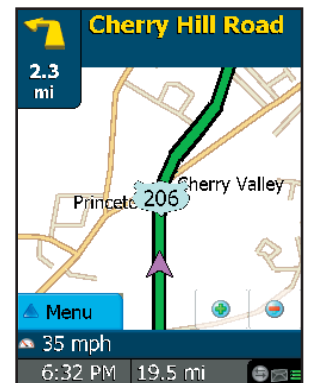
Night Mode is available in 2D or 3D (3D perspective is shown to the right). It dims the PDA display and a darker map display is used to reduce glare and eye strain while driving with CoPilot at night. CoPilot automatically switches to Night Mode based on your location and current time. To switch modes manually, use Left on the Directional Pad to toggle them.



### Route Over

Route Over highlighting outlines your route in black on the map for more visibility. This option is turned on by default.

To turn the Route Over option off, tap **Menu > Trip > Settings > Map**. Uncheck **Route Over**.

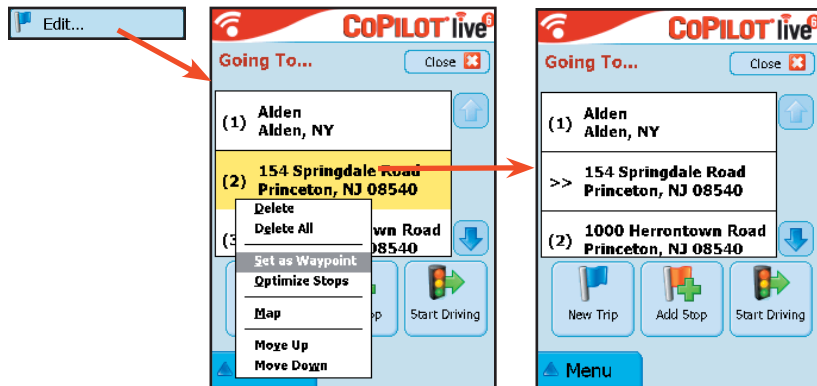


## Trip Editing and Waypoints

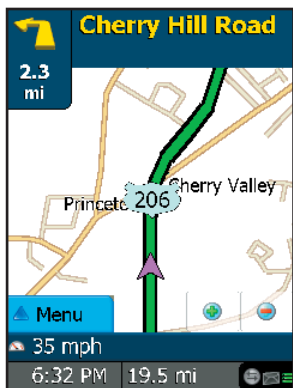
To get to the *Going To* screen from the guidance screens at any time, tap **Menu** > **Trip** > **Edit**. From here you can edit the current trip, add additional stops, or start a new trip.

Tap any stop on your itinerary to activate a pop-up menu that lets you **delete** the stop, zoom to it on the **map**, or **move it up or down** to change the stop order. This menu also lets you designate a stop as a “waypoint” (tap **Set as Waypoint**). Waypoints are not considered as stops in the itinerary, their purpose is to guide CoPilot’s route calculations along roads that you choose. To change a waypoint back to a stop, choose **Set as Stop** from the menu. Waypoints appear with “>>” instead of a stop number on the list of destinations.

CoPilot ignores waypoints when calculating the ETA and distance to the next stop, so settings waypoints can be used to get the ETA and distance to a stop that is not your next stop (see *Getting ETA’s and Distances* below).



## Getting ETA’s and Distances

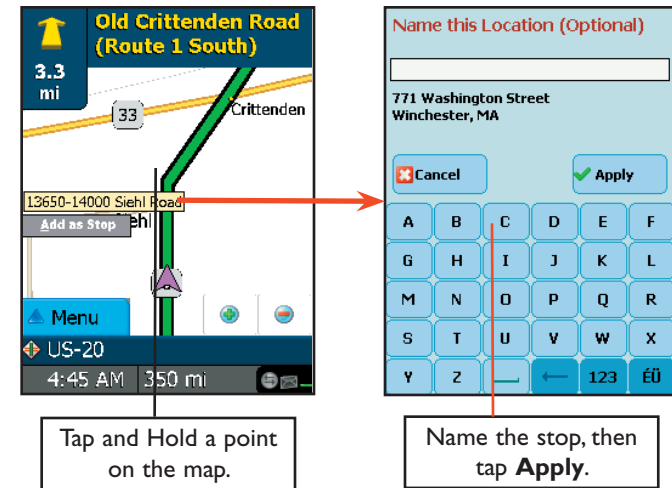


The estimated time of arrival (ETA) and distance to your next stop will always be shown in the lower left corner of the Map and Driver Safety screens. After entering a destination, tap **Start Driving** to see the ETA/distance.

If your trip has multiple stops and you want to know the ETA for a destination that is not the next stop, designate the stops between your current location and the target stop as waypoints (tap each one and choose **Set as Waypoint** in the menu that pops up).

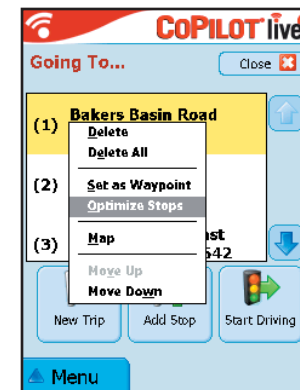
## Picking Stops From the Map

CoPilot enables you to pick a stop off the map when you don’t know the exact address of your destination. In any mode, tap and hold on your target location on the map. (A short tap displays street names if you’re not sure where you are pointing.) In the screen that appears, enter a name for the place you picked and tap **Apply**. The new place will be added to your trip itinerary.



## Optimizing Stops

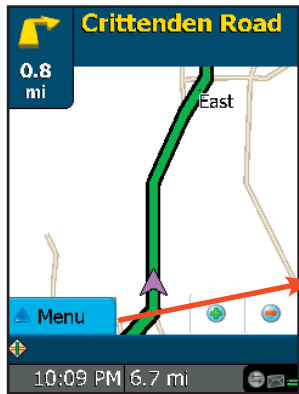
To rearrange the stops on your trip in the most efficient order, tap one of the stops in the *Going To* screen. Select **Optimize Stops** from the menu that pops. You must have at least three stops to optimize — the destination always remains the same.



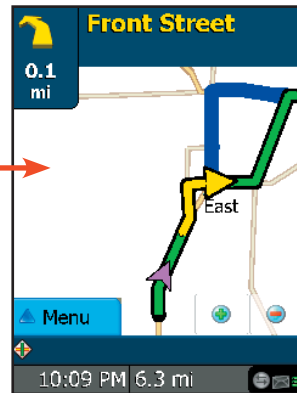
## Detour Feature

CoPilot's Detour Feature allows you to preview an alternate route before deciding whether or not to take it. Perfect for situations in which traffic has suddenly slowed ahead of you, the Detour Feature will generate an alternate route and tell you exactly how much distance the new route will add to your trip. You can then make an informed decision about whether you're better off driving through the delay or taking the new route.

1. To see an alternate route, tap **Menu > Detour** to request a new route.

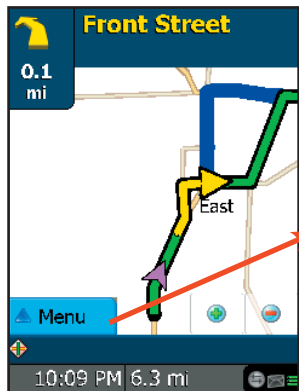


2. CoPilot's voice will tell you how many miles the new route will add to your trip, and will begin to give you new turn instructions.

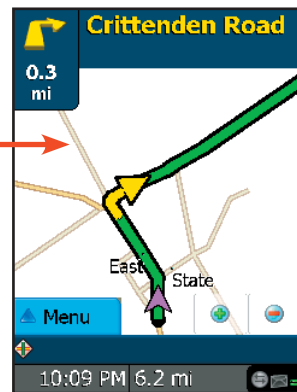


3. If you decide to use the new route, just keep driving.

4. If you decide not to use the new route, tap **Menu > Cancel Detour**.



5. CoPilot will then return you to your original route.



## Avoiding Roads

CoPilot allows you to be selective about the roads you take on your trip. There are two ways to do this: 1) you can customize your Trip Itinerary in Guidance Mode so that CoPilot will avoid certain roads; or 2) you can guide CoPilot's route by entering stops as "waypoints".

### Avoiding a Road in the Trip Itinerary

1. Tap **Menu > View > Itinerary**. The Itinerary lists all roads you will be traveling on if you have entered at least one destination.

Turn Instruction	Miles
● Crittenden Road ...	0.4 ...
↪ Crittenden Road ...	0.9
↪ NY-5 East (Main ...	3.7
↪ NY-77 North (All...	0.7
↪ I 90 East (New Y...	111.9
↪ NY-690 East	2.1
↪ I 690 East	7.6
↪ I 81 South	129.9
↪ Avoid road	4.0

2. Tap the road you want to avoid.

3. Tap **Avoid Road** from the pop-up window and CoPilot will calculate a new route that avoids that road. **This can be repeated.** If there is no other possible road or the alternate route is too impractical, a new route won't be generated.

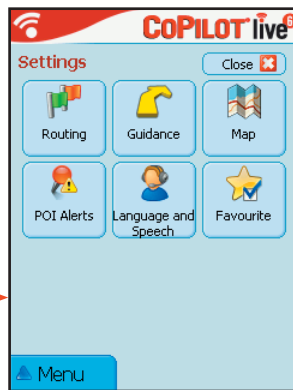
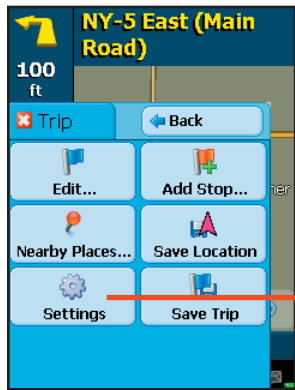
4. **To Return to the Original Route:** You can return to the original route that CoPilot gave you at any time by tapping anywhere on the itinerary and selecting **Cancel Avoid** from the pop-up menu.

### Tailoring Your Route Using Waypoints

CoPilot lets you customize a route by designating some stops as "waypoints". Waypoints appear on the Itinerary but they're not treated like stops in Guidance Mode and or in routing instructions. You can enter a waypoint along a road you want CoPilot to use, and CoPilot will guide you through the waypoint toward your destination.

To designate a place as a waypoint, enter it as a stop in the *Going To* screen. Tap and hold the location on the *Going To* list until a menu pops up, then choose **Set as Waypoint**. Waypoints appear on the *Going To* list preceded by ">>" instead of a stop number. To turn the location into a stop again, repeat and choose **Set as Stop**. You can set as many waypoints as you like on a trip; however, CoPilot will always recognize the last address in the *Going To* list as a stop.

# Settings



Tap **Menu > Trip > Settings** to change settings that affect CoPilot routing and functionality.



## Routing

Tap **Routing** to access routing options. **RV** routes favor major roads and avoid sharp turns, U-turns, and urbanized areas wherever possible. *In the United States only*, RV routes completely avoid highways that have bridge heights under 12'6" (bridge heights are not considered on smaller, local roads however).

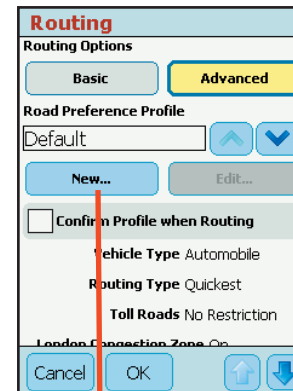
**Quickest** routing is based on the most practical route in terms of road quality, terrain, and urban/rural. **Shortest** travels the least distance where possible while maintaining some level of practicality. Or choose **Avoid Major Roads**.

**Toll Roads (U.S. only)** — Select **Always Avoid**, **Use if Necessary**, or **No Restriction**.

**London Congestion Zone Warning** — (*U.K. only*) Check to have CoPilot provide a warning when your trip will pass through a congestion zone (gives you the option to route around it) or when your destination is within a congestion zone (gives you the option to continue after warning).

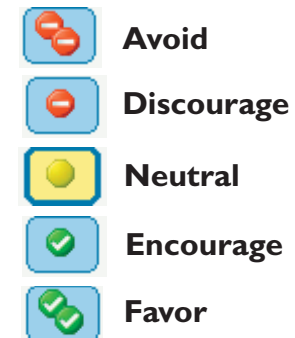
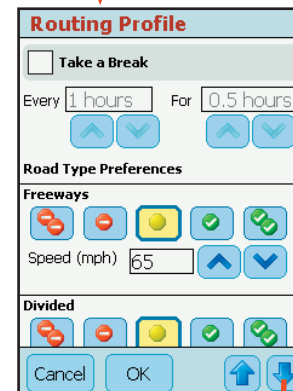
**Take a Break every \_\_\_ hours for \_\_\_ hours** — Adjusts trip ETA to reflect stops for breaks.

**International Borders Open** — (*U.S. only*) If checked, routes may cross international borders to provide better routing. If this option is not checked, no borders will be crossed.



## Advanced Routing Options:

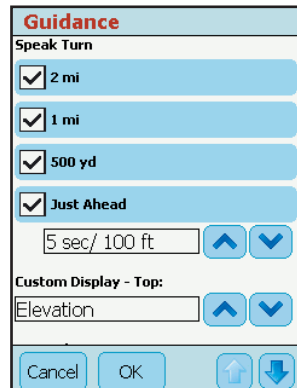
- 1) Tap **Advanced**. Use the advanced routing options to completely change how CoPilot calculates routes. Advanced options include some Basic options along with avoid/favor preferences and average speed settings for each road type CoPilot uses for route calculations.
- 2) Tap **New** to create a Profile.
- 3) Enter a name for this profile.
- 4) Select a **Vehicle Type** and **Routing Type**.
- 5) Choose a **Toll Roads** option (*U.S. only*).
- 6) (*U.K. only*) Check **London Congestion Zone Warning** if desired.
- 7) Check **Take a break** if desired, and set a break time.
- 8) Check **International Borders Open** to have routes cross borders where practical (*U.S. only*).
- 9) Set **Road Type Preferences**. Select a road speed and an avoid/favor level for each road type. There are five levels of avoid/favor for each road type. Note that a road type that is heavily avoided will not be completely excluded — CoPilot will still use that road type if there is no other efficient alternative.



**NOTE:** Even small changes to the avoid/favor balance will have a significant effect on how CoPilot calculates routes.



- 10) Tap **OK**. Your new profile is now saved.
- 11) Check **Confirm Profile when Routing** if you want to be prompted to select a profile before each trip.
- 12) Choose a profile from the Road Preference Profile pick list and tap **OK**. This is the profile CoPilot will now use to calculate routes.



## Guidance

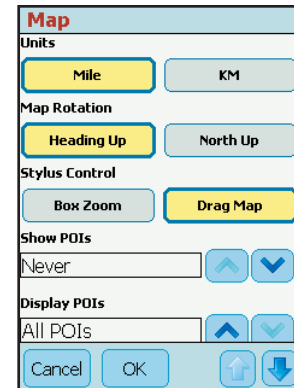
Tap **Guidance**. The settings under **Speak Turn Warning At** determine how often and where CoPilot will give you next turn information out loud. All, none, or some boxes can be checked. A pick list gives the options for **Just Ahead**: by default you will be alerted **5 sec/100 ft** before every turn (5 seconds or 100 feet, whichever is closest), but you can choose to have CoPilot speak to you sooner (2 - 8 seconds before each turn, or 100 feet).

The pick list under **Custom Display** give you display options for the line above the ETA in the screens. This line can display the destination, current road, nearest crossroad, nearest major road, nearest town, current time, speed, elevation, or heading.  
**NOTE:** Defaults are set here, but you can also toggle through the options by tapping the line itself.

Check **Display Route Arrow** to have a yellow turn arrow appear on your route on the map as you approach each turn (this option is turned on by default).

Check **Amplify Speech Volume** to have CoPilot speak louder (only active if the TTS — text to speech — voice option was selected when CoPilot was installed).

Check **Display GPS Arrow Trail** to keep a trail of arrows that tracks your position as you drive on the map.



## Map

Data areas that are currently downloaded to your mobile device are shown at the bottom of this screen.

Map options are:

**Units** — Select **Mile** or **KM** as the unit of distance.

**Map Rotation** — Select **Heading Up** to have the map display always track your position moving upward (this is the default settings), or **North Up** to maintain north at the top as you drive.

**Stylus Control** — **Box Zoom** is selected by default. It enables you to zoom into an area on the map by drawing a box around it with the stylus. Selecting **Drag Map** lets you use the stylus to drag the map in any direction to a desired location. Place the stylus on the map and move it across the screen.

**POI Display** — **Never:** Never display POI's on map.

**When Stopped:** Display POI's when your vehicle is stopped.

**Always:** Always display POI's.

**Automatic Day/Night Mode:** With this option on, CoPilot automatically switches between Day/Night Mode at daybreak and dusk. See *Map Modes*, p. 23.

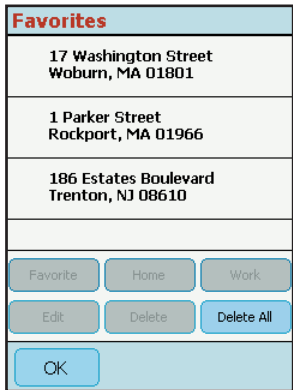
**Turn Restriction Display:** Show/hide turn restrictions on the map.

**Route Over:** This setting affects how CoPilot's calculated route displays on the map. When turned on, the route is outlined in black for better visibility.

**NOTE:** The list of **Areas of Data** shows which regions of map data are available.

## Language and Speech

When pre-recorded sound (OGG) files are installed, this option allows the user to choose a language and select an available voice for that language. Use the up and down arrows to choose a language, then tap **OK**.



## Favorites

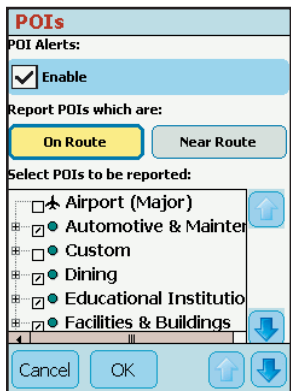
Tap **Favorites** to open your **List of Favorite Addresses**.

To change the assignment of your work or home address, highlight your choice on the list and then tap either **Work** or **Home**.

To edit an address, highlight it and tap **Edit**. Then make your changes in the *Edit Address* screen and click **Next**. Note: POI's cannot be edited, you will get a "No matches found" error message if you try.

To delete a favorite, highlight it and tap **Delete One**. To delete all favorites, tap **Delete All**.

**NOTE:** When your favorites list is filled (50), each new address will replace the address that has been inactive for the longest period of time.



## POIs

Tap **Enable** to enable POI Alerts. CoPilot will then alert you with voice prompts to the presence of points of interest as you approach them. You can use the drop-down pick list to set how far away you'll be when you receive the alerts. In the list of POI categories, select which types of POIs should be reported.

Select **On Route** or **Near Route**, to either limit alerts to POIs right on your route or to include POIs that are nearby.

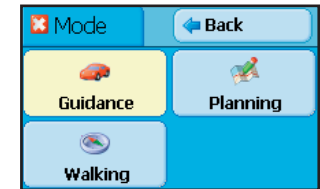
## CoPilot Modes

CoPilot has three modes of operation on the Pocket PC. Tap **Menu > Mode** to select **Guidance**, **Walking**, or **Planning Mode**.

### Guidance Mode

In Guidance Mode, you enter one or more destinations, then tap the **Start Driving** button to start driving and receive guidance. This mode provides you with on-screen and spoken driving directions and other information relevant to your trip, such as estimated time of arrival and distance to the next stop.

To receive driving directions and other data, you must have a GPS receiver attached to your Pocket PC and the receiver must be in a good position to receive signals. Also, **Receiving** must be turned on in the **GPS** menu.



### Walking Mode

Take CoPilot with you wherever you go! Walking Mode provides an as-the-crow-flies distance and direction line to your destination, directions that are perfect for walking. A GPS receiver must be attached and receiving signals.

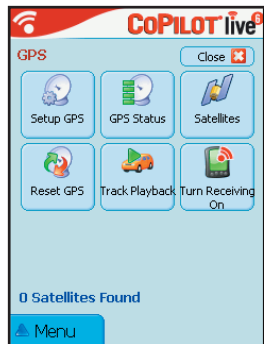
### Planning Mode

Planning Mode lets you use your Pocket PC as a pre-trip planning tool or easy-to-use reference guide. Planning Mode lets you view static maps and directions without the need for a GPS receiver.

Trip itineraries you create in Planning Mode can be saved and then loaded in any mode at a later time (generate directions, then select **Save Trip As** from the **Tools** menu).

# The GPS Menu

Tap **Menu** > **Options** > **GPS** to display the GPS menu.



**Setup GPS** — Tap **Setup GPS** to connect CoPilot to your GPS receiver through an automatic scan or by setting the COM Port and Baud Rate manually.

**GPS Status** — Text display of information from your GPS receiver, including your latitude/longitude, heading, speed, and elevation.

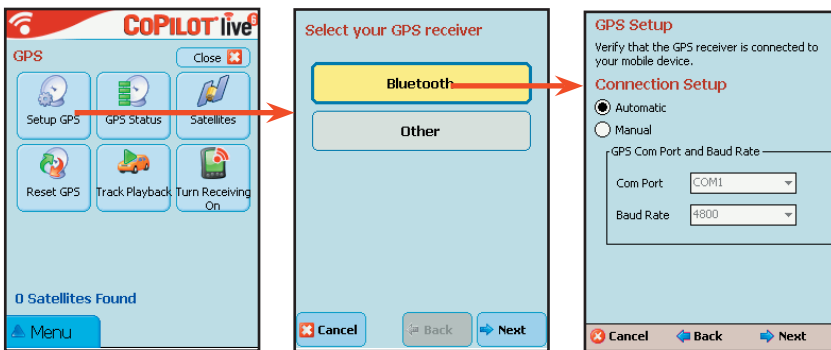
**Satellites** — Graphic display of satellites detected.

**Reset GPS** — Allows you to reset the starting area from which the GPS receiver looks for satellites. This can speed up initial satellite acquisition if you've travelled without using CoPilot (e.g. you've taken a long plane flight).

**Track Playback** — Start playback of CoPilot .gps track files.

**Turn Receiving On/Off** — Switch receiving on or off. If receiving is off, CoPilot won't provide turn instructions.

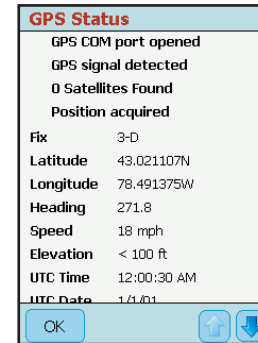
## Setup GPS



Tap **Setup GPS** to have CoPilot search for your GPS receiver (your receiver must be attached). Choose **Bluetooth** or **Other** and tap **Next**. Tap **Next** to start the scan. When your receiver is located, you'll see the message "GPS connection configured successfully". Tap **Finish** to continue.

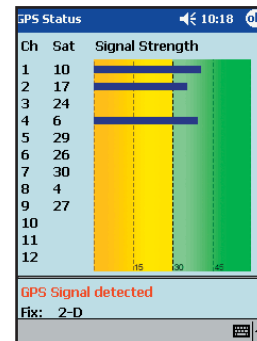
If you need to change the COM port setting, tap **Manual**, make the change, then tap **Next**.

## GPS Status



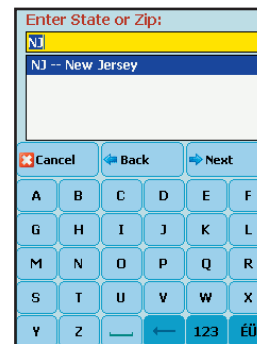
To view your satellite activity at any time, first tap the **GPS Status** option. Here you will receive information on speed, lat/long position, heading, and time and date.

## Satellites



For more satellite acquisition information, tap the **Satellites** option. To get a 3-D fix (required for CoPilot to locate your position) you must have four satellites "in the green" for several seconds.

## Reset GPS

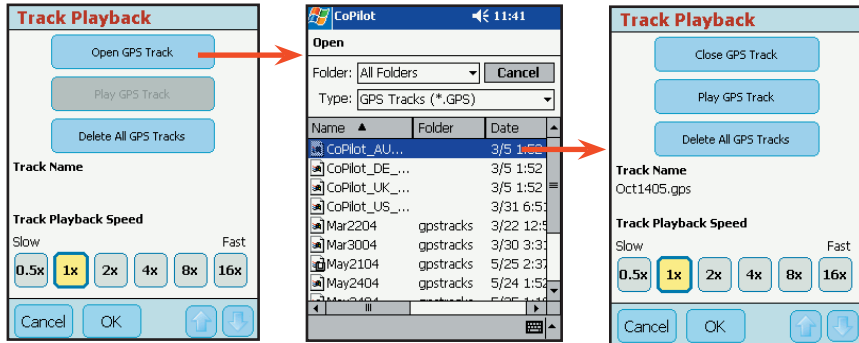


If CoPilot is having trouble acquiring a GPS fix, try tapping **Reset GPS**. You will be asked to enter a city within 100 miles of your current location:

1. Tap **Next**.
2. Type a state abbreviation.
3. Tap **Next** again.
4. In the next screen, enter a city or ZIP code.
5. Tap **Finish**.

CoPilot should now be able to acquire a GPS fix on your location, and you'll see the message "GPS connection configured successfully". If this process is not successful, see *Troubleshooting*, p. 45.

## Track Playback

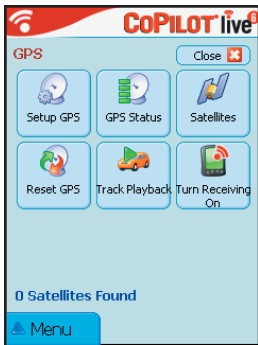


1. CoPilot automatically creates .gps track files as you drive, and stores them at the end of each trip. To open a GPS track, select **Open GPS Track** to open a Windows folder of your stored .gps files.

2. To access a track, tap once on the file you want to select.

3. Now select **Play Track** and set the **Track Playback Speed** to start track playback. You can come back to this screen to **Pause/Play** a GPS track once it starts.

## Turn Receiving On/Off

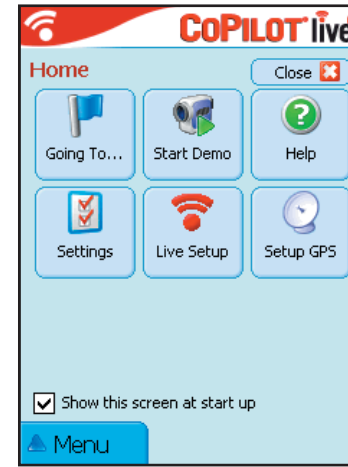


Tap **Turn Receiving Off** once if you want to turn GPS receiving off. Tap again to turn it back on. When receiving is off, CoPilot will be unable to provide driving instructions.

## Reference: Screens & Buttons in Guidance Mode on Your Pocket PC

The following is a summary guide to the screens and buttons you will see on your Pocket PC as you operate CoPilot in Guidance Mode.

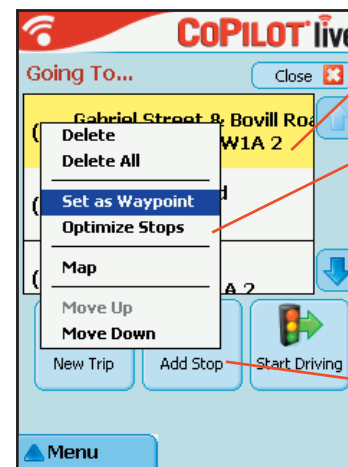
### Home Screen



The *Home* screen appears when you first open CoPilot. If you don't want to see it at startup, uncheck **Show this screen at startup**. This screen can be accessed from the **Menu** at any time. *Home* screen options are:

- **Going To** to enter a destination and receive guidance
- **Start Demo** to start a product demo for first-time users
- **Help** topics about basics such as trip entry, hardware setup, and options
- **Options** to change CoPilot routing, guidance, and map options
- **Live Setup** for live communications
- **GPS** to set up your GPS and for GPS information

### Going To Screen



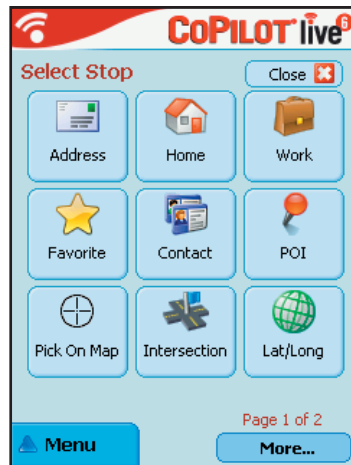
This screen displays a scrollable list of all stops in the current trip, numbered in the order CoPilot will route to them.

Tap and hold the stylus on a stop to open a menu that lets you delete the stop, zoom to it on the map, move it up or down on the list, or make it a waypoint (an unreported stop that guides your route along preferred roads). You can also optimize the stop order for a more efficient route using this menu.

Tap **Add Stop** to enter another stop in the *Going To* screen, **New Trip** to delete all stops and start a new trip, or **Start Driving** to receive guidance.



## Select Stop Screen



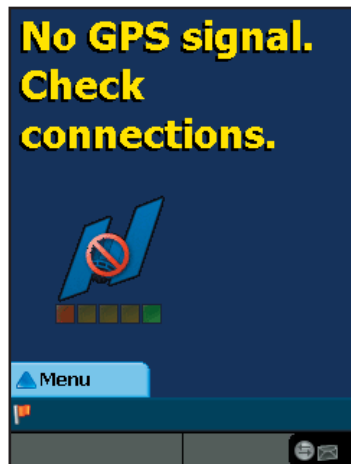
In this screen you add stops to your trip. There are nine different types of stop entry to choose from:

- Enter a new **Address**
- Program or enter a **Home** address
- Program or enter a **Work** address
- Select from your **Favorite** list
- Enter an Outlook Express **Contact**
- Search for a **Point of Interest (POI)**
- Enter a **Latitude/Longitude** point
- **Pick on Map**
- Enter an **Intersection**

**More....**

- Enter a previously **Saved Trip**

## No GPS Signal



When you see this screen it means that CoPilot is not receiving data from the GPS unit.

- 1) Check that all your connections have been made correctly, and that all wires are secure.
- 2) Make sure your receiver is plugged into your vehicle's power source.
- 3) In the drop-down *GPS* menu on your Pocket PC, be sure *Receiving* is checked.

Also see *Troubleshooting*, p. 45.

## Determining Current Position



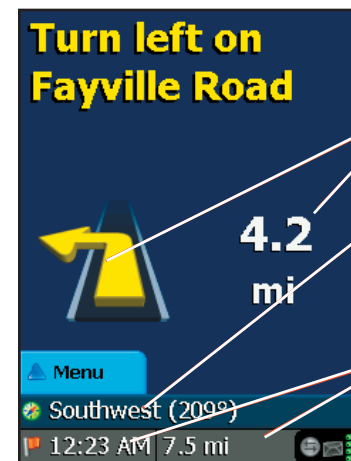
When you see this screen, CoPilot is in the process of determining where you are. This can take a few seconds. The picture under the text will indicate how close you are to acquiring a fix.

**NOTE:** The first time you use CoPilot, it can take 15-20 minutes to acquire a fix, or more if you are not in a stationary position.

Heavy foliage, tall buildings, or any other structures obstructing communications may interfere with CoPilot's ability to track your location. Like your car radio, GPS tracking can also be affected by weather conditions if severe. CoPilot will continue tracking as soon as adequate signals are available.

## Driver Safety Screen

The Driver Safety Screen automatically displays when your vehicle travels at more than 10 m.p.h. If you are a passenger and want to see the map at this point, tap the top or bottom of the screen, tap the **Change View** toolbar button and then the **Map** button (see *Navigating Through CoPilot Screens*, p. 23).



Next turn instruction.

Next turn arrow and distance to next turn.

Customizable display line, tap to cycle through your current road, nearest crossroad, nearest major road, nearest town, ETA, or speed.

ETA and Distance to Next Stop display.

Messaging, Traffic, and GPS Status indicators. (Green = 3D fix, Yellow = 2D fix, Red = no fix)

## Map Screen

1.4 mi

Fayville Road

Next turn directional arrow.

Distance to next turn.

Route ahead highlighted in green, upcoming turn marked with yellow arrow.

Customizable data display, tap to cycle through current road, nearest crossroad, nearest major road, nearest town, ETA, or speed.

Menu

25 mph

5:18 AM 251 mi

Messaging, Traffic, and GPS Status indicators. (GPS reception is good when green, fair when yellow. Red indicates no fix.)

ETA and Distance to Next Stop display.

## Itinerary Screen

The Itinerary provides turn-by-turn driving directions. In this screen you can highlight a road to avoid and CoPilot will generate a detour around that road (see *Avoiding Roads*, p. 25).

Turn Instruction	Miles
Route 7	3.9 ...
Fayville Road	3.0
Drager Road	0.6
Fayville Road	1.0
Cranell Road	0.7
Fish House Road ...	2.6
NY-29 East	2.1
NY-147 South	17.1
NY-5 East	1.3
Washington Avenue	0.1

Distance between turns.

Direction of turns along your route.

Names of roads for upcoming turns.

Menu

Southwest (213°)

5:22 AM 253 mi

## Trip Buttons

Turn left on Main Road

Trip Back

Edit... Add Stop...

Nearby Places... Save Location

Settings Save Trip

Tap the **Menu** button and then tap **Trip** to invoke these trip editing features:

**Edit...** — The **Edit** button takes you back to the *Going To* screen where you can edit your trip.

**Add Stop...** — The **Add Stop** button takes you to the *Select Stop* screen.

**Nearby Places** — The **Nearby Places** button lets you do a quick Points of Interest search centered around your current location (requires a GPS fix).

**Save Location** — Save your current GPS location as a Favorite.

**Save Trip** — Save your current trip.

**Switch View:** To switch views, tap **Menu > View** and choose a view from the drop-down menu.

At circle take second exit on

View Back

Driver Safety Where Am I

3D Next Turn

Itinerary Destination

**Driver Safety Screen** - Text only, switches to the map below 10 m.p.h.

**Where Am I** - Map screen, frames a close-up view of your current position.

**Next Turn** - Map screen, frames your current position to the next turn.

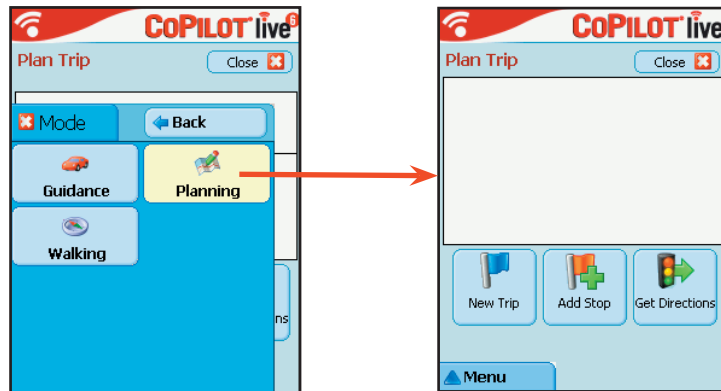
**Destination** - Map screen, frames the view from your current position to your final destination.

**3D View** - Map screen in 3D.

**Trip Itinerary Screen** - Basic text overview of all your upcoming screens.

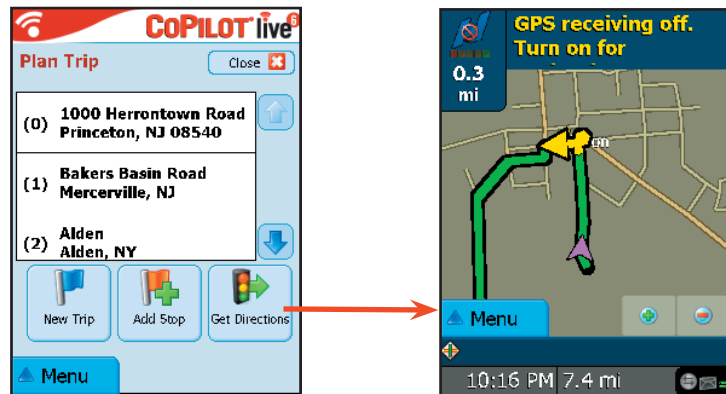
# Trip Planning on Your Pocket PC

You can use CoPilot on your Pocket PC for trip planning whether or not the GPS receiver is connected and receiving data. Planning Mode allows you to run a trip on your Pocket PC even when you're not in your car. You'll get driving directions and maps that you can use for reference before your trip begins.



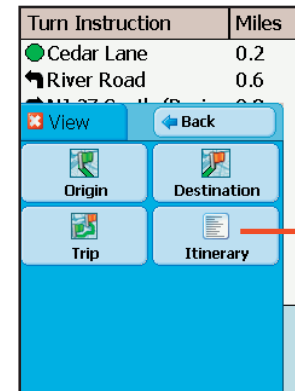
1. First turn on your Pocket PC and launch CoPilot (tap **Start** > **Programs** > **CoPilot**). Then tap **Menu** > **Mode** > **Planning**.

2. The *Plan Trip* screen will open. Tap **Add Stop**, then add stops to your trip as you would in Guidance Mode.

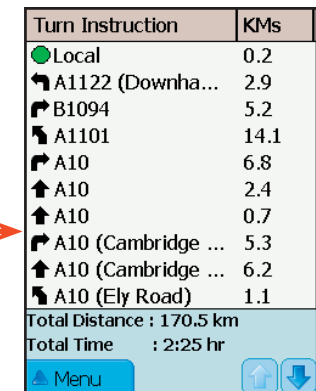


3. The first stop (0) on the *Plan Trip* itinerary is the starting point of your trip. Tap **Get Directions** when you have entered all your stops.

4. Now you'll see your route on the map. You can tap the zoom buttons to zoom your view in and out.



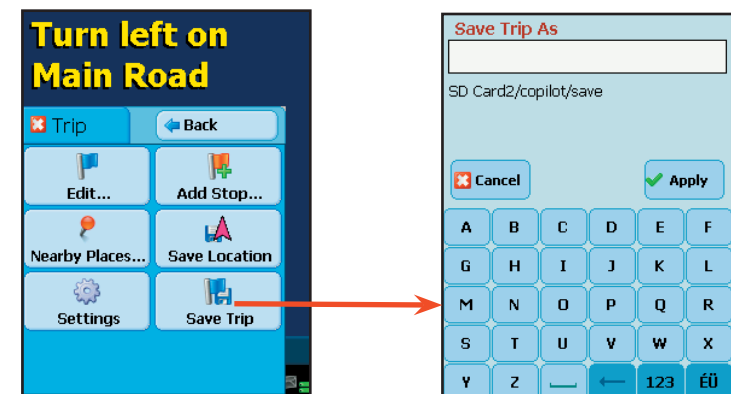
5. To see driving directions, tap **Menu** > **View** > **Itinerary**.



6. Your trip, along with the trip itinerary, can be saved and then opened later in Guidance Mode (see below).

## Saving and Loading Trip Itineraries

To save a trip itinerary you put together in Planning or Guidance Mode, select **Menu** > **Trip** > **Save Trip** from the pop-up **Tools** menu. Give the trip a name and tap **Ok**. At a later time you can open the trip in Guidance Mode using the **Saved Trip** option in the *Select Stop* screen..



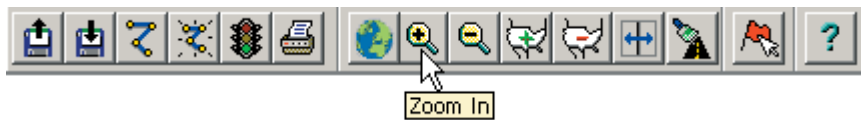
# Trip Planning on Your Desktop



You can use CoPilot's desktop functions to map out routes and print maps and driving directions before getting on the road. Desktop trip planning is an additional feature of CoPilot that is in no way connected to using your Pocket PC for route guidance.

On the following pages you will find brief descriptions of CoPilot's desktop trip planning capabilities. For more detailed descriptions, open CoPilot Help from the desktop application (**Help** menu > **Help Contents and Search**, or click the **Help** button on the toolbar). Go to **Desktop Trip Planning** in the **Contents** tab.

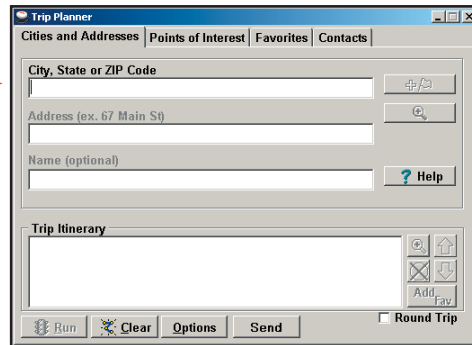
To begin planning a trip on your desktop, click the **Planning** icon in the sidebar to the left of the map. Using the drop-down menus you can select from a number of planning features. Many of these features can also be accessed from the toolbar. Place your cursor on any toolbar button without clicking to see what it does.



## New Trip



**New Trip** button or **New Trip** in the **File** menu.

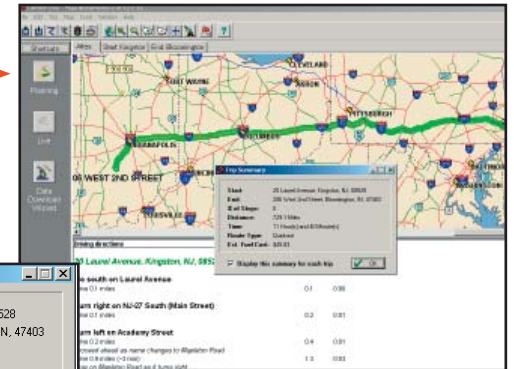
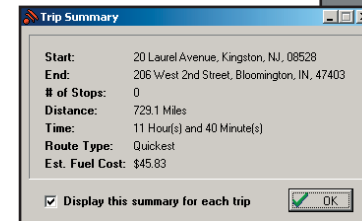


Opens the *Trip Planner* window where you can create a new trip, arrange the order of stops on your route, add or edit **Favorites** (these can be downloaded to your Pocket PC along with map data), search for **Points of Interest**, or use your **Contacts** database to add stops to your trip. Click **Run** to receive driving directions and a map.

## Run Trip

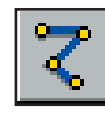


**Run Trip** button or **Run Trip** in the **Trip** menu.

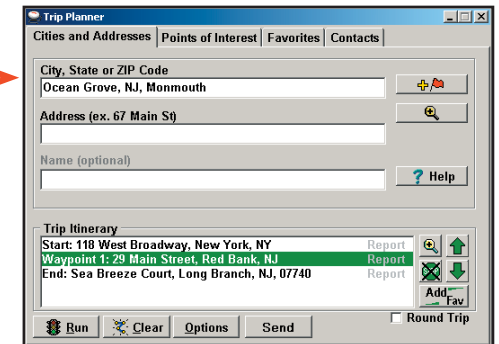


Generates the route for the trip you entered. Displays a detailed **Trip Summary**, **Map** and **Driving Directions**.

## Edit Trip

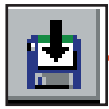


**Edit Trip** button or **Edit Trip** in the **Trip** menu.

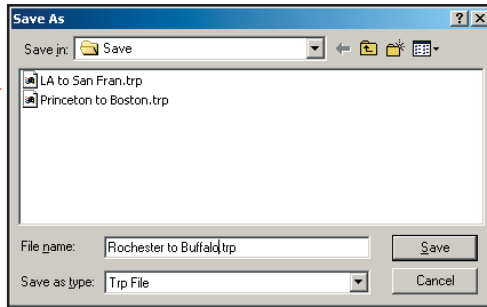


Takes you back to the *Trip Planner* window where you can edit stops on your existing trip or click **Clear** to delete all stops and begin a new trip.

## Save Trip



Save Trip button or *Save Trip.../Save Trip As...* in the **File** menu.

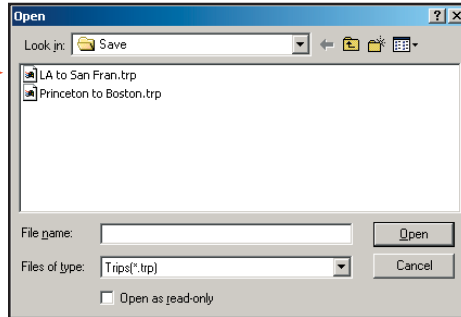


Opens a standard Windows dialog where you can name your trip and save it to your hard drive either before or after running it in the *Trip Planner*.

## Open Trip



Open Trip button or *Open Trip...* in the **File** menu.

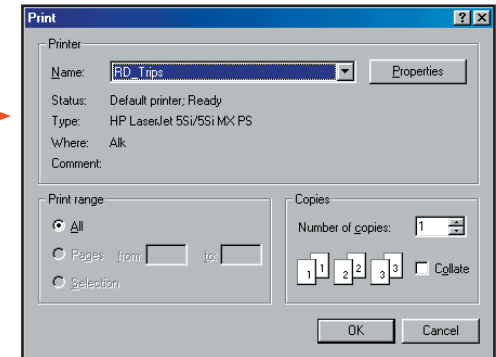


Opens a standard Windows dialog where you can select a saved trip to open in the *Trip Planner* window.

## Print



Print button or *Print...* in the **File** menu.

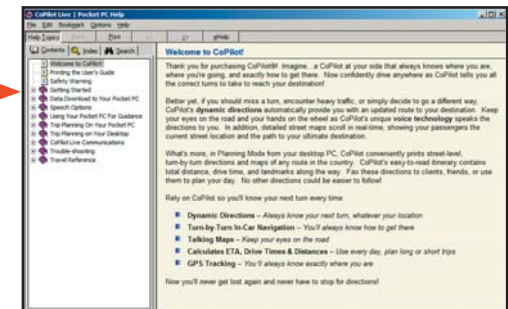


Takes you to the standard Windows **Print** options for printing the active window that contains your map or driving directions. Activate the map or directions by clicking on it or selecting it in the **Window** menu. Select *Print TravPak...* from the **File** menu to print driving directions, an overview map, and a zoomed map of each stop.

## Help



Help button or *Help Contents and Search* in the **Help** menu.



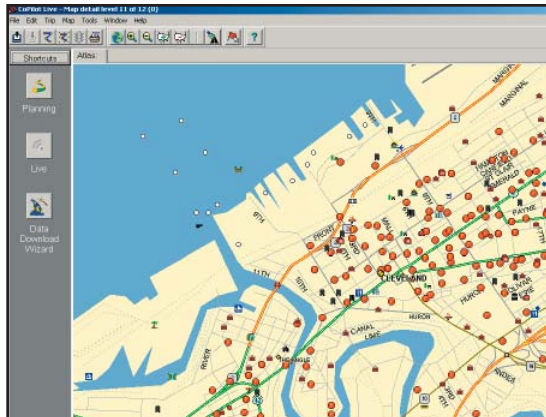
Opens the CoPilot Help window with the **Contents** tab open on the left. From here you can search for help by topic, use the **Index**, or **Search** for a word or phrase.

## Zoom In



**Zoom In** button or *Zoom In* in the **Map** menu.

Each time you click this button, your view will be zoomed in by one increment. The zoom level is shown in the title bar of the map window.

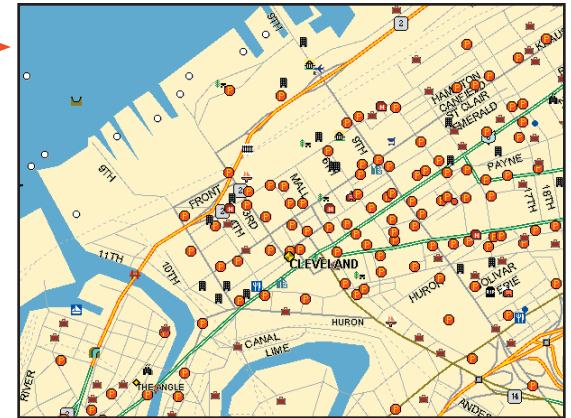


## More Detail



**More Detail** button or *Detail > Show More* in the **Map** menu.

Click once to increase the level of detail you see on the map by one increment without changing the zoom level.

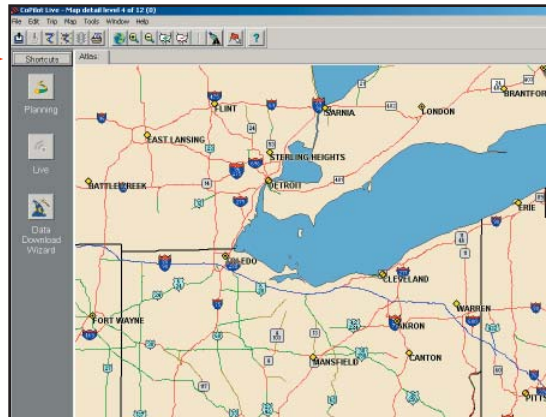


## Zoom Out



**Zoom Out** button or *Zoom Out* in the **Map** menu.

Each time you click this button, your view will be zoomed out by one increment. The zoom level is shown in the title bar of the map window.



## Less Detail

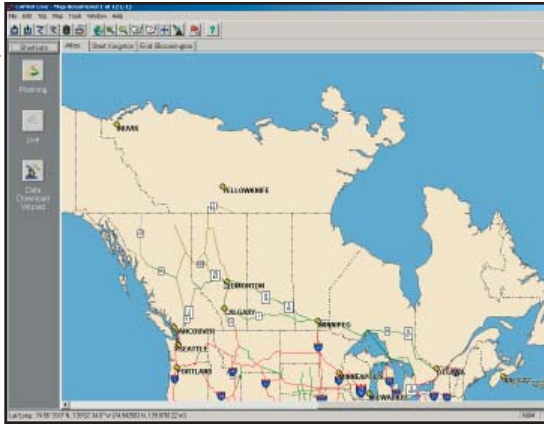
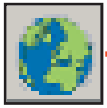


**Less Detail** button or *Detail > Show Less* in the **Map** menu.

Click once to decrease the level of detail you see on the map by one increment without changing the zoom level.

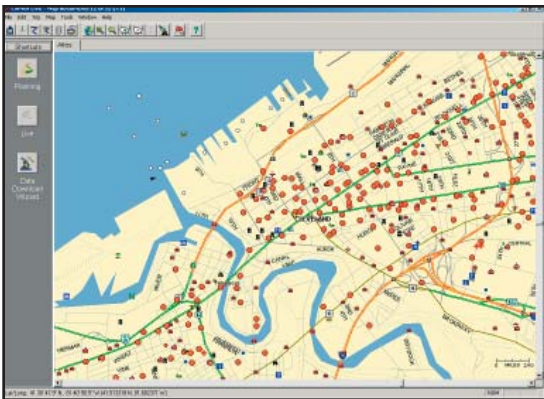


## Zoom To Region



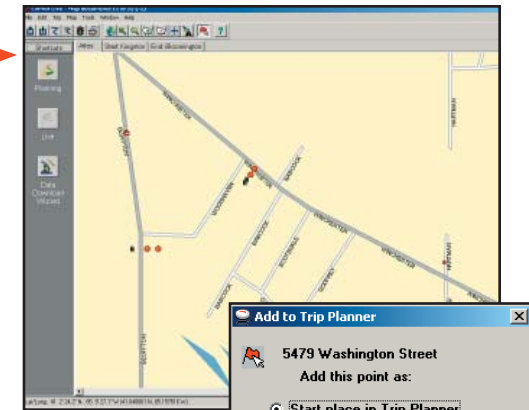
**Zoom to Region** button or *Zoom Region* in the **Map** menu. This function allows you to zoom your map view to a specific area. Choices in the sub-menu will depend on which CoPilot data region(s) were purchased.

## Refresh Map



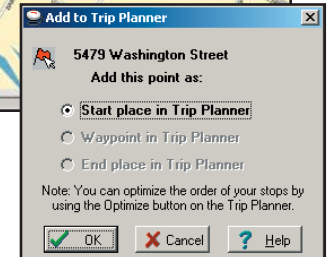
**Refresh Map** button or *Refresh Map* in the **Map** menu. When scrolling through a map you may notice it takes a few seconds for all the data to catch up. This function will snap the entire screen to a new map.

## Pick Stops

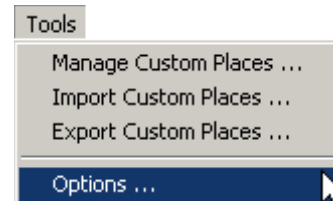


To turn on *Pick Stop* mode, click the **Pick Stops** button or right-click on the map and select *Pick Stops*. Then click on any point on the map to enter it as a stop. The map view must be zoomed in to level 11 or 12. At lower zoom levels, keep clicking on the map until level 11 is reached (level is displayed in the CoPilot window title bar).

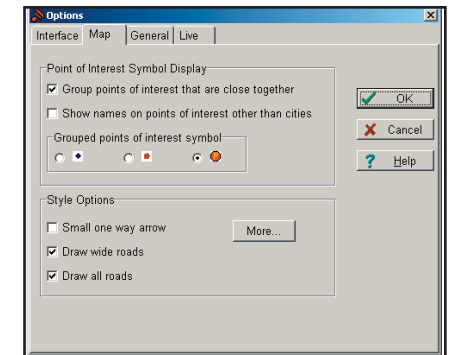
In the dialog that opens, you can choose to enter the point as a start place, a waypoint, or a destination.



## Options (Tools Menu)

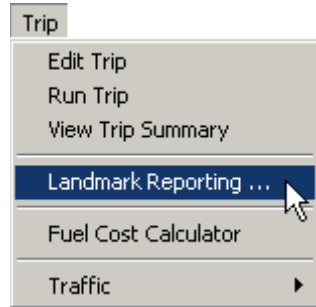


Select *Options* from the drop-down **Tools** menu.

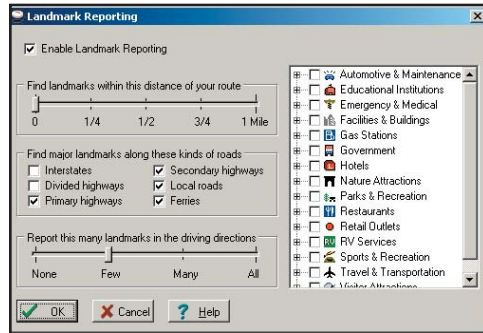


In this window you can change the way you view your desktop maps and various application settings. For example, in the **General** tab you can choose the measure of distance (miles vs. kilometers), and the **Map** tab lets you adjust the appearance of features on the map such as roads and points of interest.

## Landmark Reporting

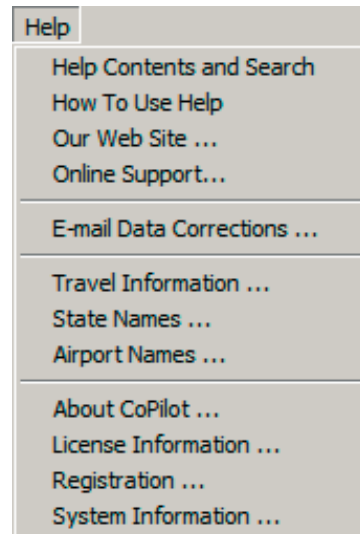


Select *Landmark Reporting* from the drop-down **Trip** menu.



In this window you can control how many Landmarks CoPilot points out when generating driving directions.

## Help Menu

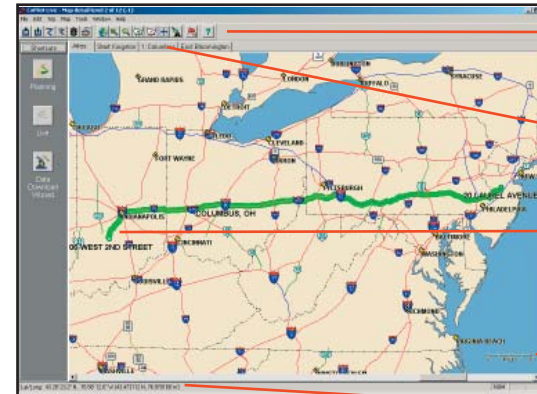


Use the drop-down **Help** menu to access CoPilot Help for assistance with all aspects of the software and to quickly access ALK's web site.

## Reference: CoPilot on Your Desktop

The following is a guide to the main screens you will see as you use CoPilot on your desktop/laptop computer for trip planning.

### Map Window



Menus and toolbar buttons to access all of CoPilot's desktop features.

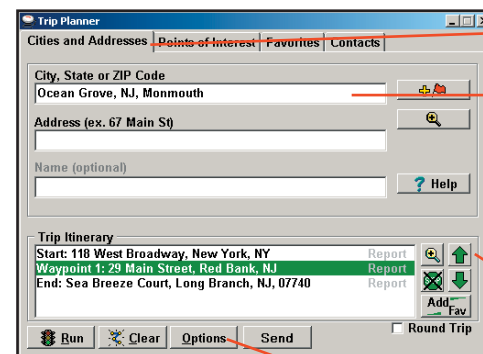
Click on a tab to frame any stop on your route.

Map of area around your destination. **Zoom in and move your cursor over a street to view its name.**

Distance Scale.

Latitude/longitude position of your cursor on the map.

### Trip Planner Window (Cities & Addresses)



Click **Cities and Addresses**.

**Enter city name/state, or ZIP code.** Enter an address (optional), with the option to add a **Name** to it. Click the **Add Stop** button to add the stop to the Itinerary.

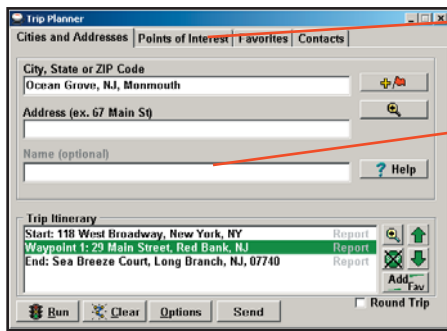


Move stops up or down on your *Itinerary*, zoom to stop location on the map, delete a stop, or add a favorite.

See p. 26 for routing options.

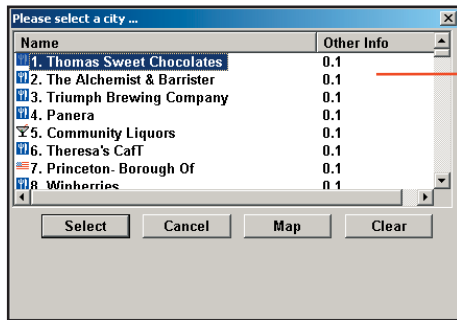


## Trip Planner Window (Points of Interest)



Click **Points of Interest** tab.

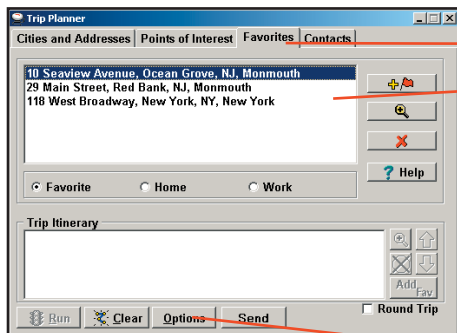
Enter a **City, State or ZIP code** in which you would like to search, a radius within which to search, choose a **category** and **type** from the drop-down menu, and **click the binoculars to search**. You can also enter a name to narrow down the search in the **POIs that start with** box.



You will be given a list of matches to your search criteria. Highlight your selection and click **Select**. Click the **Add Stop** button to add it to your Itinerary.



## Trip Planner Window (Favorites)



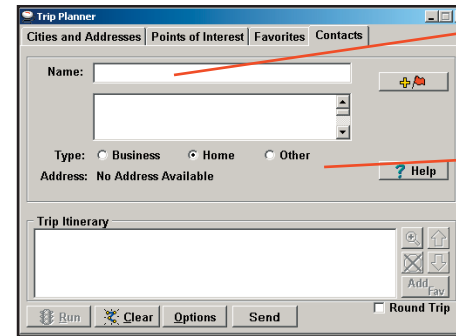
Select **Favorites** tab.

**Highlight a selection** from your list of places by clicking on it. You can zoom to it on the map, or **Delete** it from the list using the buttons to the right. Click the **Add Stop** button to add a favorite to your Itinerary.



See p. 26 for routing options.

## Trip Planner Window (Contacts)



Enter a person's first or last name and hit <Enter>. CoPilot will search your Contacts database for matches.

Select the Contacts address type (as defined in Outlook) to get the appropriate address, then click the **Add Stop** button to add it to your Itinerary.

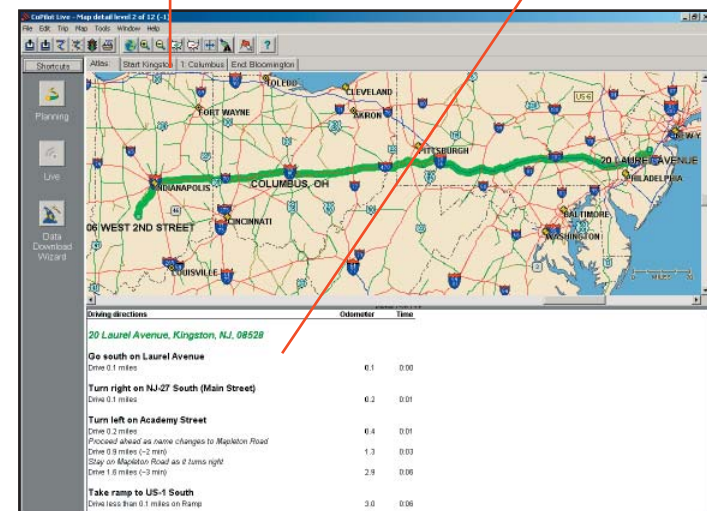


When you click **Run** in the Trip Planner window, your route will be calculated and driving directions and a map will display. To print either one, click on it and choose **Print** from the **File** menu. To print directions plus all map views, choose **TravPak Printing**.

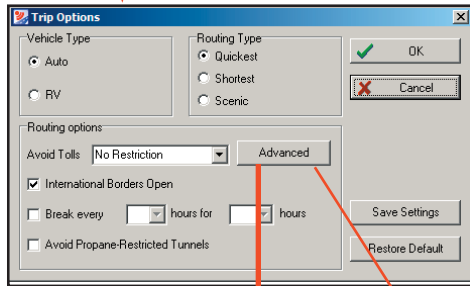
## Driving Directions and Map (Split Screen)

**Atlas, Start, and End** tabs will zoom to the map view of those places respectively.

Driving directions give you turn-by-turn instructions including ramps and exits, and distance and time between turns.



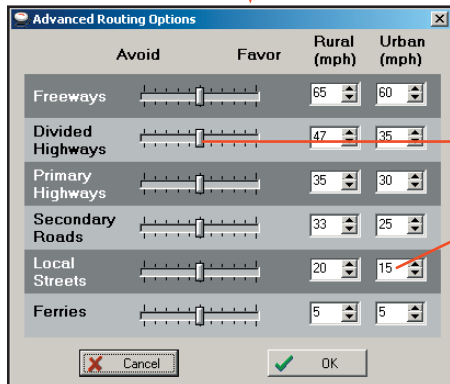
## Routing Options



Click the **Options** button in the Trip Planner window to access CoPilot routing options.

**Auto** and **Quickest** is the default setting, and provides the quickest routing for automobiles based on practical considerations such as road quality, terrain, and urban/ rural classifications. **RV** routing favors major roads and avoids sharp turns, U-turns, and urbanized areas where possible. *In the U.S. only, RV routing avoids 12' 6" height restrictions on highways.* **Scenic** routing avoids major roads and favors more rural and scenic roads wherever possible and practical.

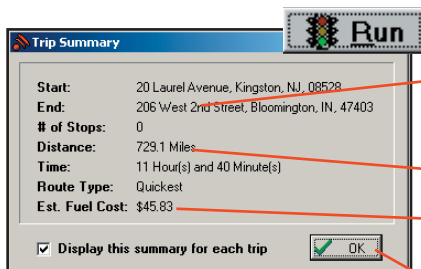
Also see *Routing*, p. 26.



Click **Advanced** to set general road preferences. Drag the sliding bars to the left or right to avoid or favor each road type.

Set the road speeds CoPilot uses in its route calculations for each type of road by either typing or clicking the up and down arrows under **Rural** and **Urban** for each road type.

## Trip Summary



Select **Run** in the *Trip Planner* window to run the trip.

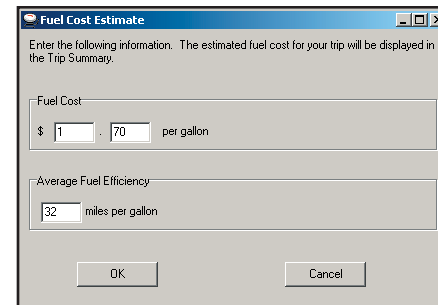
The *Trip Summary* will show start and end places, and the number of stops in between them.

Total distance and time for trip.

Estimated fuel cost for your trip based on entries in the *Fuel Cost Calculator* (**Trip** menu).

Click **OK** to view map and driving directions.

## Fuel Cost Calculator



To calculate an estimate of your fuel costs for a trip, select **Fuel Cost Calculator** from the **Trip** menu before you run your route. Fill in the average cost per gallon of fuel that you expect to pay, and the distance per gallon you can expect to get in your vehicle. Click **OK**, then run your trip. A fuel cost estimate based on what you entered will be calculated and shown in the Trip Summary that CoPilot creates for every trip you run.

# CoPilot Live Communications

CoPilot Live allows you to maintain two-way communication with drivers who are using CoPilot and to actually see where they are currently located. You can do this from the CoPilot Live web page.

Using this CoPilot Live functionality requires the following:

- 1) **If you want to track and message other drivers from a desktop or laptop computer:** Your PC must be connected to the internet so that you can access our CoPilot Live web page through a normal web browser.
- 2) **If you want others to track and send messages to you:** CoPilot Live must be running on your Pocket PC in your vehicle. You must have a wireless Internet connection.

## About the CoPilot Live Web Page

As a CoPilot user, you can create an account on our website that allows your family, friends, and coworkers to “see” you and communicate with you anywhere in the world!

Through the website you can do all of the following:

- Send text messages to CoPilot users on the road, using large, customizable, one-touch response buttons to ensure driver safety.
- Real-time tracking of other people who are on the road. See their current location, destination, ETA and much more on a map.
- Send trip itinerary updates including new stops and revised destinations — you can coordinate a change in plans with someone who’s on the road right now.
- Create an online account from where you can send temporary or permanent tracking numbers to friends and family, giving you tighter control of the security so you know who has access to you while you’re on the road. You can also create and join groups with other CoPilot users, and manage all your account preferences.

To learn more about CoPilot’s Live capabilities, visit ALK’s CoPilot Live web page at <http://live.alk.com> (North America) or <http://live.alk.eu.com> (Europe). Click the **Help** button at the top of the home page.

## Set Up a CoPilot Live Web Account

To use Live capabilities, your Pocket PC must have a wireless Internet connection. **To create your account** on the CoPilot Live website:

1. Go to the web site for your region:
  - North America: <http://live.alk.com>
  - Europe: <http://live.alk.eu.com>

2. Choose an Account Name and Password that you will use to login to the CoPilot Live network.
3. Fill in the rest of the required information.
4. Click “**Submit**” to create your account.

## Set Up Your Pocket PC

Take advantage of your Pocket PC’s wireless Internet (GPRS) connection for real-time traffic alerts, tracking, messaging, and itinerary updates.

First, create your Username and Password on the CoPilot Live website as described above. Then, on your Pocket PC, open CoPilot and select **Menu > Live > Connections**. Live options are:

- **Connection:** Turn **Wireless Communication On**. Tap **Edit** and enter the **Account Name** and **Password** you created on the CoPilot Live web site. The **Vehicle Name** is how others will identify you. Choose your Internet Connection and manually **Connect** or **Disconnect**.  
**NOTE:** Your screen name, user name, and/or password can be changed as many times as you like. But you’ll need to change your user name or password on the Live Web page before changing them on your Pocket PC. This is *not* required for your screen name.
- **Invites:** Invitations can be sent to e-mail recipients for real-time location tracking.
- **Messages:** **View** or **Delete** messages received.
- **Settings:** Choose the message timeout and how frequently you want to broadcast your position. Less frequent broadcasts will reduce the data traffic on your Internet plan.

Your Live connection status is shown at the bottom right of the black information bar:

- **Green** — Good.
- **Yellow** — OK. Usually seen when first connecting or in poor GPRS coverage.
- **Red** — No connection. Check your GPRS network coverage and Live settings.

## Real-Time Traffic Information

In addition to providing users with pre-trip planning and GPS route guidance capabilities, CoPilot uses wireless communications to automatically send real-time information to drivers, notifying them of traffic incidents (accidents, traffic jams, etc.) along the route ahead and potential alternate routes. As soon as you enter a destination, CoPilot will provide dynamic driving directions and regularly updated traffic incident reports.

There are two ways to receive real-time traffic feeds with CoPilot Live:

1. Use a wireless Internet (GPRS) connection to receive traffic incidents through a traffic service provider.
2. Use a TMC-enabled traffic receiver to obtain traffic incidents through a dedicated FM band.

Traffic is an optional additional-cost service and is not available in all areas.

## Real-Time Traffic in Guidance Mode

Provided that CoPilot has GPS acquisition, a user-inputted destination, and a traffic feed (GPRS or TMC), it will provide regularly updated traffic incident reports in Guidance Mode. As soon as you input a destination, CoPilot will begin providing dynamic driving directions as well as regularly updated traffic incident reports and alternate routes based on the user's destination and route ahead.

## Traffic Options

To configure traffic options, on your Pocket PC select **Menu > Traffic**.

- **Settings:**
  - **Get Incidents:** Set to **Always** to have CoPilot check for traffic incidents when you first run a route and periodically after that as you drive into new areas.
  - **Default Incidents:** Choose either **Ignore** or **Avoid**. If a new traffic alert times out before you look at it, that incident will take the default action. The **Avoid** setting will generate an alternate route.
  - **Speak Incidents:** Set the frequency at which CoPilot announces incidents.
  - **Incident Alert:** Restrict when CoPilot displays alerts.
- **TMC Settings:** Select your traffic data source, time and frequency settings.
- **Connection:** Live connection settings. Wireless Communication must be turned on (see p. 41).

## Using Traffic

In Guidance Mode, press **Menu > Traffic**. Options in this menu are:

- **Check Route:** Select **Check Route** to manually check for traffic incidents along your current route.
- **Find Traffic:** Select **Find Traffic** to search for traffic incidents around any location.
- **Review Traffic:** To view or change your traffic routing, press **Menu > Traffic > Review Traffic**.
- **Clear Traffic:** To set all incidents to Ignore, press **Menu > Traffic > Clear Traffic**.

**Avoiding a Traffic Incident:** When CoPilot sends a traffic incident alert, pressing **9** will open a list of current traffic incidents. You can choose to **Avoid** or **Ignore** each incident — highlight it and press **Menu > Avoid** or **Menu > Ignore**. CoPilot will automatically route around any route you choose to avoid.

## Traffic Icon Display

CoPilot obtains traffic content from a traffic server or TMC station and displays the information in its maps and itinerary. Incidents are displayed on the map using the following indicators:



## Traffic Report Content

CoPilot Live alerts you when a traffic incident is detected on your route ahead. If traffic is being checked automatically, the alert indicator appears along with incident icons on the map that show the type and severity of the incident (see p. 42). An alert sound accompanies the incident display. Incidents are ignored or avoided based on your option settings (see p. 42).



Tapping the alert button will display the list of current incidents. Tapping an incident icon on the list (red or green) toggles between **Ignore** (green icon) and **Avoid** (red icon). Tapping the item text on the list brings up a menu of response options. Select **Details...** to see details about the incident. In this screen, use the **Back** and **Next** buttons to scroll through all incidents on the list. Select **Map** to see the location of the traffic congestion on the map.

If you choose to **Avoid** the incident, a new route will be calculated to avoid congestion. If you **Ignore** the incident, your route will continue unchanged. If an alert times out before you respond to it, CoPilot will use the default incident action (see *Traffic Options*, p. 42).



## Creating/Using Your Own Voice

You can create your own voice or load voices that other CoPilot users have created and posted online. To do this, create a folder with any name you want and copy sound files with the exact names of the CoPilot sound files.

The CoPilot sound file names and their associate dialogues are:

File Name	Dialogue
100y.wav	One Hundred Yards Ahead
150y.wav	One Hundred Fifty Yards Ahead
1kmWarning	1 Kilometer Ahead
1miWarning	1 Mile Ahead
200mWarning	200 Meters Ahead
200y.wav	Two Hundred Yards Ahead
250y.wav	Two Hundred Fifty Yards Ahead
2kmWarning	2 Kilometers Ahead
2miWarning	2 Miles Ahead
300y.wav	Three Hundred Yards Ahead
350y.wav	Three Hundred Fifty Yards Ahead
3tenthmiWarning	3/10ths of a Mile Ahead
400y.wav	Four Hundred Yards Ahead
450y.wav	Four Hundred Fifty Yards Ahead
500mWarning	500 Meters Ahead
500y.wav	Five Hundred Yards Ahead
50y.wav	Fifty Yards Ahead
Arrived	Approaching Stop
BearLeft	Bear Left
BearRight	Bear Right
CancelDetour	Cancelling Detour
CPWelcome	Welcome to CoPilot
Detour	Finding Detour
Fspcam.wav	Attention Fixed Automatic Safety Camera
Junction.wav	Take Motorway Junction
JustAhead	Just Ahead
Keyleft.wav	Keep Left
Keepright.wav	Keep Right
Keeps.wav	Keep Straight Ahead
LeftTurn	Turn Left

NextStop	Continuing to Next Stop
PoiAhead	Point of Interest Ahead
Rdestination.wav	You Have Reached Your Destination
RightTurn	Turn Right
Roundabout1	Take 1st Exit at Roundabout
Roundabout10	Take 10th Exit at Roundabout
Roundabout2	Take 2nd Exit at Roundabout
Roundabout3	Take 3rd Exit at Roundabout
Roundabout4	Take 4th Exit at Roundabout
Roundabout5	Take 5th Exit at Roundabout
Roundabout5	Take 6th Exit at Roundabout
Roundabout7	Take 7th Exit at Roundabout
Roundabout8	Take 8th Exit at Roundabout
Roundabout9	Take 9th Exit at Roundabout
SafetyCam	Safety Camera Ahead
SharpLeft	Make a Sharp Left
SharpRight	Make a Sharp Right
Spcam.wav	Speed Camera Ahead
TakeExit	Take Exit
Then	Then
TrafficWarning	Traffic Incident Reported
TurnAround	Turn Around
Waypoint	Approaching Stop

**NOTE:** The sound files must be saved in OGG or WAV format.

#### EXAMPLE:

- Create a folder—the name of the folder can be anything you want (for this example we'll use 'Fun Voice' as the folder name).
- Record sound files to replace some or all of the CoPilot sound files (CoPilot will use the default voice for sound files it does not find).
- Copy the folder with the new sound files to Storage Card\CoPilot\Save\ [Choose a language folder].
- Now when you select that language, you'll see 'Fun Voice' as one of the voice options (see page 5 for details on changing your voice).

## Software Registration

Registered users are entitled to technical support, discounts on new versions of CoPilot, new product information, and software enhancements.

**NOTE:** Software activation does NOT register your software, they are two separate processes.

**In North America:** You can register your software at [www.alk.com](http://www.alk.com) (click "Support Center") or call ALK® Technologies at **888-872-8768** (M-F, 9:00 AM-5:00 PM EST).

**In Europe:** Go to [www.alk.eu.com](http://www.alk.eu.com) and click "Support Center".

**In Australia:** Go to [www.travroute.com.au](http://www.travroute.com.au) and click "Support".

ALK Technologies has a one-per-licensing non-transferable registration. Unauthorized purchases from private owners are not supported or under warranty, and special pricing does not apply.

## Technical Support

After registering your software (see above), you're entitled to technical support and discounts on new versions of CoPilot. Check out ALK's web site for technical support documentation and posted answers to common questions. If the web site does not provide an answer to your question, technical support for registered users is available during standard business hours (9:00 am-5:00pm Monday-Friday). You should be at your computer and have your **Product Key Code** available when you contact us (your Product Key Code can be found on the front cover of the printed *Quick Start* that came with the product).

Please be sure to reach us **using the contact information for your region** shown below. We are sorry, but our support staff in ALK's regional offices cannot respond to requests for assistance outside the areas they serve.

**North America** - Web: [www.alk.com](http://www.alk.com), E-mail: [cpsupport@alk.com](mailto:cpsupport@alk.com),  
Fax: 609-252-8166, Phone: 888-872-8768

**Europe** - Web: [www.alk.eu.com](http://www.alk.eu.com), E-mail: [uksupport@alk.eu.com](mailto:uksupport@alk.eu.com),  
Postal: Suite 8, 4 Bloomsbury Square, London WC1A 2RP, UK  
Phone: +44 (0)207 404 4222

**Australia** - Web: [www.travroute.com.au/support.html](http://www.travroute.com.au/support.html),  
E-mail: [support@travroute.com.au](mailto:support@travroute.com.au), Phone: 03-9855-1498

# Troubleshooting

*Why can't I get a satellite reading the first time I use CoPilot?*

The first time the GPS receiver is used it may take approximately 5 minutes to acquire a fix (but may take as long as 15 minutes). You can minimize this time by remaining stationary and positioning the GPS receiver so that it has a clear view of the southern sky. Once initialized, the unit should acquire satellite signals in 40 seconds or less in the future.

*How can I speed up satellite acquisition?*

Be sure that the GPS receiver has an unobstructed view of the sky. Trees, buildings, and other obstacles are capable of blocking the satellite signals.

*In the drive screen on my Pocket PC I am receiving turn-by-turn instructions in the black box, but CoPilot is not speaking. Why is that?*

CoPilot provides voice prompts each time you come up on your next turn. In order to hear these prompts you need to be sure the volume on your Pocket PC is turned all the way up. On the Pocket PC in the **Start** menu go to **Settings**, and click on **Sounds & Reminders**. Under **System volume** move the slide bar all the way to the right. Or use your Pocket PC's keypad to adjust the volume. Tap up to increase the volume, tap down to decrease it.

From within CoPilot on your Pocket PC, you can also select **Settings** in the **Options** menu, then tap the **Guidance** tab and be sure that **Amplify Speech Volume** is checked.

## GPS PROBLEMS

If you are not getting a GPS signal please check the following:

1. In the **GPS** menu, make sure there is a check mark next to **Receiving**.
2. If not, tap on **Receiving** to turn it on. If you cannot place a check mark next to receiving by tapping on it, try using your Pocket PC's Reset button (located on the bottom or back of the device) while CoPilot is open and the GPS unit is connected.
3. After you hit the Reset button, open the program again and make sure **Receiving** is checked in the **GPS** menu. Your GPS unit should now acquire a satellite fix.

Also be aware that heavy foliage, tall buildings, or any other structures obstructing communications will interfere with CoPilot's ability to track your location. Like your car radio, GPS tracking can also be affected by weather conditions if severe. CoPilot will continue tracking as soon as adequate signals are available.

# Using Help Files

CoPilot provides extensive Help Files, available on your desktop/laptop and your Pocket PC, to guide you through the program as you use it.

To access Help on your Pocket PC, once the CoPilot application is launched, tap the **Tools** pop-up menu at the bottom of the screen and select **Help**.

In the desktop application, click on the **Help** button in any window to open a Help topic that describes how to use that window. For example, if you're entering a stop in the *Trip Planner* window, the Help button will open at the topic *Entering Additional Stops*. From there, you can navigate through other topics, or do a search for information using the **Search** tab.

Another way to access the Help files on your desktop is through the **Help** menu. **Contents and Search** will open Help with the **Contents** tab displaying the main topics available. **Topic Search** opens the **Search** tab, where you can do a word search.

## Data Corrections

The ALK map database undergoes constant revision as we strive to provide you with the highest quality product. Revisions include the addition of new roads, roadway upgrades, and the addition of new streets and addresses. If you encounter missing or inaccurate map data, please contact us so that we can include it in our updates.

The single best way to convey data corrections is through the submission of your GPS tracks-every time CoPilot is on it records a GPS track that contains position information that ALK uses to realign existing roads, fix one-way designations and add new roads.

### To submit GPS tracks from within CoPilot:

1. Connect you Pocket PC to your desktop via Activesync.
2. Make sure you have Internet access from your desktop.
3. Open CoPilot on your desktop.
4. From the top toolbar select GPS > Submit GPS Tracks.
5. CoPilot pulls the GPS tracks from your Pocket PC and sends them to ALK electronically.

### To submit GPS tracks by E-mail:

On your Pocket PC your GPS tracks (files that end with .gps) are stored in your My Documents > gpstracks folder.

- ♦ If your map data is loaded onto a storage card, your tracks are stored in the My Documents > gpstracks folder on that storage card.

- ♦ If your map data is loaded onto your device memory, your tracks are stored in the My Documents > gpstracks folder on your device.

1. Copy all GPS tracks to your desktop
2. Send them as an email attachment to data@alk.com

### Specific Data Notes

Electronic Submission:

You can use our built-in Data Corrections form to supplement any GPS tracks you submit. This form has space to make notes regarding specific problems with map data.

1. Make sure your desktop is connected to the Internet
2. Open CoPilot on your desktop
3. From the top toolbar select Help > E-mail Data Corrections
4. Complete the form and click Send

Contact ALK by Mail/Fax:

You also have the option to write out any data corrections and/or create a CD with GPS tracks and mail/fax them to:

#### North America:

ALK Technologies  
Attn: Data Corrections  
1000 Herrontown Road · Princeton, NJ · 08540 · USA  
Fax: 609-252-8166  
E-mail: data@alk.com

#### Europe:

ALK Technologies Limited  
Suite 8, 4 Bloomsburg Square  
London, WC1A 2RP · United Kingdom  
Phone: +44 (0)207 404 4222  
Fax: +44 (0)207 404 7778  
E-mail: ukcustservice@alk.eu.com

## License Upgrade

Your CoPilot desktop software contains street-level maps that cover all of the United States, Canada, and Europe. CoPilot offers different licenses that allow you to access European and/or Canadian maps on your mobile device. Licenses are available for the following:

- (1) **Major region** - Detailed street-level maps for any of the following regions: Alps Ski Region, Benelux (Belgium, the Netherlands, and Luxembourg), Canada, France, Germany, Italy, Pyrenees, Scandinavia, and the United Kingdom.
- (2) **Pan-Europe** - Complete street-level maps for all of Europe
- (3) **United States** - Complete street-level maps for the entire U.S.

If you purchased CoPilot with a single (U.S.) region license and later want to use street maps from other regions, you will need to purchase an upgrade license from your dealer. After purchasing a CoPilot region, you will need to go through the activation process.

## Adding a Data Region

If you have purchased an additional data region after your initial purchase of CoPilot, you will need to modify the original ("Base") installation and activate the new region.

**IMPORTANT:** You can only use your Expansion Product Key AFTER you have installed CoPilot with a Base Product Key. If you have not yet installed CoPilot, please do so first and then follow the instructions below. The Base Product Key can be found on the printed *Quick Start Guide* that comes with CoPilot.

### ON YOUR DESKTOP/LAPTOP:

1. Insert your CoPilot **Install Disc** into your CD-ROM drive.
2. Select **Modify** and click **Next** when the InstallShield Wizard appears.
3. Enter your Expansion Product Key when prompted to enter a **Product Key**.
4. Follow the on-screen instructions.
5. The Activation Wizard will appear at the end of installation. Activation occurs just as it did when you originally installed CoPilot.



## ON YOUR POCKET PC:

**IMPORTANT:** You must install CoPilot to your Pocket PC using your Base Product Key AND you must have data downloaded to your Pocket PC before using your Expansion Product Key.

1. Open CoPilot on your Pocket PC.
2. Tap **Menu > Options > Licensing** from the menu at the bottom of the screen.
3. Tap **Activate/Upgrade** and enter your Expansion Product Key (found in your order confirmation e-mail) when prompted to enter a **Product Key**.
4. Follow the on-screen instructions.
5. Activation occurs just as it did when you originally installed CoPilot.

If you have any questions, please visit our Support Center at [www.alk.com](http://www.alk.com) (for Europe, [www.alk.eu.com](http://www.alk.eu.com)) or send an e-mail to [support@alk.com](mailto:support@alk.com).

## Region Selection

If you purchased an additional data region, when downloading map data to your Pocket PC you will need to make sure the proper region is active. To do this, on your desktop in Planning mode click the **Map** menu > **Region** > and check the desired region.

## Return Policy

### ALK's 30-Day Money Back Guarantee and Return Policy

We know you'll love our products. If, however, you are not satisfied with any CoPilot product you purchase directly from ALK, you may return it within 30 days for a refund of the price paid (excludes shipping and handling).

#### For your return to be accepted:

- You must have purchased directly from ALK. ALK products purchased at retail locations are only refundable through the retailer under the retailer's terms and conditions. You will have to contact the individual retailer for their specific terms and conditions.
- The postmark date on the package must be within 30 days of the original product ship date.
- If your product contains software, and you have activated the software, you must first deactivate the software and provide to ALK the deactivation code (you must activate our software to use it for more than a few days' time).

If your product contains a GPS receiver and it is scratched or otherwise determined to be non-saleable by ALK, we will deduct a \$50 usage fee from the refund amount.

**To return your product**, please follow the instructions below:

1. Fill out the return slip that came with your product or create your own return slip that includes the following information: your name, address, phone number, date of purchase, e-mail address, reason for return, and (if applicable) your deactivation code.
2. Repackage your entire product (CDs, GPS receiver, etc.) and include the return slip inside the package.
3. Send the package to:

<u>In North America:</u>	<u>In Europe:</u>
<b>ALK Technologies</b>	<b>ALK Technologies Limited</b>
<b>Attn: CoPilot Returns</b>	<b>Suite 8, 4 Bloomsburg Square</b>
<b>1 000 Herrontown Road</b>	<b>London, WC1A 2RP</b>
<b>Princeton, NJ 08540, USA</b>	<b>United Kingdom</b>

For your protection, please use UPS, FedEx, or Insured Parcel Post for shipment of returned products. ALK is not responsible for loss or damage during shipping.

Your refund will appear on your credit card statement within 4-6 weeks after ALK's receipt of the returned product.

# CoPilot® End-User License Agreement

**NOTE:** On the following pages there are three separate license agreements for users of **North American, European, and Australian Data.**

THIS IS A LEGAL AGREEMENT BETWEEN YOU, THE USER (either an individual or an entity), AND ALK TECHNOLOGIES, INC. ("ALK"). IF YOU DO NOT AGREE TO THE TERMS OF THIS License, DO NOT OPEN THE PACKAGE.

Promptly return the unopened CD-ROM package and accompanying materials (including written materials and containers) to the dealer from which you obtained them for a full refund.

OPENING THE PACKAGE OR USING THE ENCLOSED SOFTWARE INDICATES YOUR ACCEPTANCE OF THE TERMS OF THIS License.

---

## ALK®Technologies, Inc. LICENSE AGREEMENT CoPilot | Pocket PC 6 with NORTH AMERICAN DATA LICENSES: 1 User

### I. Grant of License:

This ALK License Agreement ("License") is a single-user, non-exclusive, non-transferable license agreement and not an agreement for sale. ALK hereby licenses the Help Files and CD-ROM software identified above (collectively, "the Software") to you under the following terms and conditions.

The Software may not be loaded onto a network of any type. You may use the Software on any compatible personal computer, provided you use it on only one computer at a time. The Software is "in use" on a computer when it is loaded into the temporary memory (i.e., RAM) or installed into the permanent memory (e.g., hard disk, CD-ROM, or other storage device) of that computer. You may make a single back-up or archival copy of the Software for back-up purposes only. You may not transfer this Software or assign this License Agreement to another party.

You are not permitted to, during the term of this License Agreement and thereafter:

- Use the Software on a network or file server.
- Use or copy the Software or the accompanying documentation except as provided in this License Agreement.
- Alter, merge, modify, or adapt the Software or the accompanying documentation in any way including disassembling or decompiling this Software.
- Loan, lease, sell, transfer, or sublicense the Software or the accompanying documentation.
- Copy, loan, lease, sell, transfer, or sublicense any output of this Software (including but not limited to printed maps and driving itineraries); However, you may provide a limited number of printed copies of a single trip to family members or traveling companions.
- You are not permitted to use the Software for motor-carrier tariff or routing purposes.

- Electronic reproduction and transmission of output to remote locations is not permitted.

ALK retains all rights not expressly granted. Nothing in this License Agreement constitutes a waiver of ALK's rights under the U.S. copyright laws or other applicable copyright laws or any other federal or state law.

### 2. Term:

This License is effective upon receipt by you of the Software and upon opening the package. The License is effective until terminated. You may terminate this License at any time by returning all copies of the Software, and any portions thereof, to ALK. The License terminates automatically if you fail to comply with any of the terms of this License Agreement. You agree upon such termination to return or destroy this CD-ROM and all other copies of the Software and certify in writing to ALK that you have done so.

### 3. Limited Warranty:

ALK warrants that all disc(s) on which the Software is furnished shall, for a period of 90 days from delivery (the "Warranty Period") be free, in normal use, from defects in material and workmanship. ALK will have no responsibility to replace any disc(s) that have been damaged by accident, abuse, or misapplication.

Customer Remedies: ALK's entire liability and your exclusive remedy shall be, at ALK's option, either (a) return of the price paid or (b) replacement of the disc(s) that does not meet ALK's Limited Warranty, and that is returned to ALK with a copy of your receipt.

Except as specifically provided above, ALK MAKES NO OTHER WARRANTY OR REPRESENTATION, EITHER EXPRESS OR IMPLIED, WITH RESPECT TO THE SOFTWARE OR DOCUMENTATION, INCLUDING ANY WARRANTY AS TO THE QUALITY, PERFORMANCE, MERCHANTABILITY, OR FITNESS FOR A PARTICULAR PURPOSE. IN NO EVENT WILL ALK TECHNOLOGIES, INC. BE LIABLE FOR DIRECT DAMAGES IN EXCESS OF THE License FEE OR ANY INDIRECT, SPECIAL, INCIDENTAL, OR CONSEQUENTIAL DAMAGES ARISING OUT OF THE USE OR INABILITY TO USE THE SOFTWARE OR DOCUMENTATION, EVEN IF ADVISED OF THE POSSIBILITY OF SUCH DAMAGES. IN NO CASE SHALL ALK'S LIABILITY EXCEED THE AMOUNT OF THE License FEE.

While the information contained in the Software was believed to have been correct at the time of publication, ALK cannot guarantee its accuracy and shall not be subject to liability for any errors or omissions. Information in the Software and its accompanying preprinted materials is subject to change without notice and does not represent a commitment or endorsement on the part of ALK. Routes and miles generated by the Software are not suitable for commercial truck use.

THE WARRANTY AND REMEDIES SET FORTH ABOVE ARE EXCLUSIVE AND IN LIEU OF ALL OTHERS, ORAL OR WRITTEN, EXPRESS OR IMPLIED. No ALK dealer, distributor, agent, or employee is authorized to make any modifica-

tion or addition to this warranty. Some states do not allow the exclusion or limitation of implied warranties or limitation of liability for incidental or consequential damages, so the above limitation or exclusion may not apply to you.

#### **4. Licensee's Responsibility:**

You assume all responsibility for, and ALK shall not be liable for, all action taken, decisions made, and advice given as a result of your use of the Software.

#### **5. US Government Restricted Rights:**

The Software and documentation are provided with restricted and limited rights. Use, duplication, or disclosure by the Government is subject to restrictions set forth in subparagraphs (c) (1) and (2) of the Commercial Computer Software-Restricted Rights clause at 48 CFR 52.227-19, as applicable. Manufacturer is ALK Technologies, Inc., 1000 Herrontown Road, Princeton, NJ 08540.

#### **6. General:**

The export or re-export of the Software may be restricted by the laws of the United States and other countries, and you shall not export this Software in violation of any such applicable laws. This License Agreement is governed by the laws of the State of New Jersey.

© Copyright 1990-2006 ALK Technologies, Inc.

-----  
**Exit Authority (c) 1999-2006 Zenrin USA, Inc. All rights reserved.**  
-----

#### **Disclosure for products containing Canadian Postal Code and/or Canadian Street-Level Data:**

Based on Computer File(s) licensed from Statistics Canada. © Copyright, HER MAJESTY THE QUEEN IN RIGHT OF CANADA, as represented by the Minister of Industry, Statistics Canada 2006. ALK Technologies, Inc. is an Authorized User of selected Statistics Canada Computer File(s) and Distributor of derived Information Products under Licensing Agreement 6147. No confidential information about an individual, family, household, organisation or business has been obtained from Statistics Canada.

#### **Software License Agreement for FONIX TEXT TO SPEECH ENGINE**

IMPORTANT! READ THIS License AGREEMENT BEFORE OPENING THIS SOFTWARE PACKET. BY OPENING THE SEALED PACKET OR USING THE SOFTWARE, YOU INDICATE YOUR ACCEPTANCE OF THE ENTIRE AGREEMENT.

#### **SOFTWARE License AGREEMENT**

This Agreement is a legal agreement between you and Fonix Corporation ("Fonix"), but may be superseded by a separate license agreement that you and

Fonix have signed. The software in this packet ("Software") and its media and documentation (collectively, the "Product") are protected by copyright and other intellectual property laws and international treaties. You have no title to, or ownership of, the Product, other than its physical media. Fonix reserves all rights not specifically granted in this Agreement.

**USE AND RESTRICTIONS:** You may operate the Software on only one computer. However, if you have purchased a network or multiple-user license, you may load and use as many single-use copies and/or support as many concurrent users, in the aggregate, as are authorized by such license. You may make only one copy of the Software, retaining the Fonix CD or other media for storage and back-up purposes. The Software does not include updates, maintenance, or support, which may be separately available. This Software and its voice output are for your personal, individual use only. You are not permitted to broadcast or distribute the voice output of the Software (i.e., synthesized speech) to more than one person or to use the Software's voice output for any commercial purposes. You may not modify, adapt, translate, rent, lease, loan, resell for profit, distribute, network, or create derivative works based on any part of the Software. You may not reverse engineer, decompile, or disassemble the Software.

**LIMITED WARRANTY:** Fonix warrants that the Product's physical media will be, under normal use, free from defects in material and workmanship for one year from the date you purchased it. Fonix's entire liability, and your exclusive remedy under this warranty, will be replacement of the defective media without charge. EXCEPT FOR THIS LIMITED WARRANTY, FONIX MAKES NO WARRANTIES, EXPRESS OR IMPLIED, AND DISCLAIMS ANY IMPLIED WARRANTY OR MERCHANTABILITY OR FITNESS FOR A PARTICULAR PURPOSE. Fonix does not warrant that the product is entirely error-free. FONIX'S TOTAL LIABILITY FOR ANY CLAIM OR DAMAGE ARISING OUT OF THE USE OF OR INABILITY TO USE THE SOFTWARE SHALL BE LIMITED TO DIRECT DAMAGES, WHICH SHALL NOT EXCEED THE License FEE YOU PAID. IN NO EVENT SHALL FONIX BE LIABLE FOR LOST PROFITS, LOST DATA, INTERRUPTIONS OF BUSINESS, OR ANY INCIDENTAL OR CONSEQUENTIAL DAMAGES ARISING OUT OF THE USE OF OR INABILITY TO USE THE SOFTWARE, REGARDLESS OF WHETHER FONIX HAS NOTICE OF THE POTENTIAL FOR SUCH LOSS OR DAMAGE.

The above limitations may be superseded by law in some jurisdictions.

**U.S. GOVERNMENT RESTRICTED RIGHTS:** The Software and any accompanying materials are provided with Restricted Rights. Use, duplications, or disclosure by the Government is subject to restrictions as set forth in subparagraph (c)(1)(ii) of The Rights in Technical Data and Computer Software clause at DFARS 252.227-7013 or subparagraphs (c)(1) and (2) of the Commercial Computer Software-Restricted Rights at 48 CFR 52.227-19, as applicable. Contractor/manufacturer is Fonix Corporation at 1225 Eagle Gate Tower, 60 East South Temple St., Salt Lake City, Utah 84111.

---

**ALK® Technologies, Inc. License AGREEMENT**  
**CoPilot | Pocket PC 6 with EUROPEAN DATA**  
**LICENSES: 1 User**

**IMPORTANT:** Please read the following agreement ("License") carefully.

THIS IS A LEGAL AGREEMENT BETWEEN YOU, THE USER (either an individual or an entity), AND ALK Technologies, Inc. ("ALK"). IF YOU DO NOT AGREE TO THE TERMS OF THIS License, DO NOT INSTALL THE SOFTWARE. Promptly return the package and accompanying materials (including written materials and containers) to the dealer from which you obtained them for a full refund.

**Acceptance:** Installation or use of the enclosed ALK Technologies, Inc. ("ALK") software (the "Software") on your computer constitutes your acceptance of these terms. If you do not agree to the terms of this License, you must immediately delete the Software from your computer and destroy any copies you made of the Software and of any written materials relating to the software, and promptly return the Software and, if bought as part of a package, any associated devices to your retailer for a refund.

**License:** ALK grants you, as an individual, a License to install and use one copy of the Software on a single personal computer at a time. Your License to use the Software is subject to you complying with the terms of this License. A License is required for each installation of the Software, unless the Software is (i) installed temporarily on a computer during the repair or maintenance of the computer on which the Software is normally installed and (ii) is immediately deleted from such computer as soon as those repairs or maintenance are complete. You may make one copy of the Software for backup purposes only.

**Copyright:** United States copyright law and international treaty provisions protect the Software. You agree that no title to the intellectual property in the Software is transferred to you. You further acknowledge that title and ownership rights will remain the exclusive property of ALK, and you will not acquire any rights to the Software except as expressly set out in this License. You agree that any copies of the Software will contain the same proprietary notices that appear on and in the Software.

**Prohibited Use:** Unless you have ALK's prior written permission, you may not (i) use, copy, modify, alter, or transfer the Software or accompanying documentation, except as expressly permitted in this License; (ii) translate, disassemble, decompile, or reverse engineer the Software (iii) sublicense or lease the Software or its documentation; or (iv) use the Software in a multi-user or networked environment or on a rental basis or in a time-sharing or computer service business.

**Limited Warranty:** ALK warrants that the Software will perform substantially in accordance with the accompanying written materials for a period of 30 days from the date of purchase. Any implied warranties relating to the Software are

limited to such 30 day period provided that limitation is permitted by applicable law.

**End-User Remedies:** If the Software does not conform to the "Limited Warranty" above, ALK's entire liability and your sole and exclusive remedy will be, at ALK's option, either to (i) correct the error, or (ii) help you work around the error, or (iii) accept a return and issue a refund through your retailer. The Limited Warranty is void if failure of the Software has resulted from your fault, abuse, or misapplication. If we correct an error in the Software for you, then the unexpired portion of the Limited Warranty period as at the date you informed us of the error will apply to the corrected software once you have received the corrected version.

**NO OTHER WARRANTIES:** EXCEPT AS SET OUT IN THE LIMITED WARRANTY, ALK DOES NOT WARRANT THAT THE SOFTWARE IS ERROR FREE. ALK DISCLAIMS ALL OTHER WARRANTIES WITH RESPECT TO THE SOFTWARE, WHETHER EXPRESS OR IMPLIED, INCLUDING BUT NOT LIMITED TO IMPLIED WARRANTIES OF MERCHANTABILITY, FITNESS FOR A PARTICULAR PURPOSE AND NON-INFRINGEMENT OF THIRD PARTY RIGHTS. Some jurisdictions do not allow the exclusion of implied warranties or limits on how long an implied warranty may last, or an exclusion of incidental damages. This means the above limitations or exclusions may not apply to you. This warranty gives you specific legal rights and you may also have other rights depending on your country.

**No Liability for indirect loss:** In no event will ALK be liable to you for any loss of profit, wasted time, lost business or for any incidental, or indirect loss of any kind arising out of the performance or use of the Software, even if ALK has been advised of the possibility of such damages.

**Termination:** Without prejudice to its other rights, ALK may terminate this License if you fail to comply with these terms and conditions. In that situation, you must destroy all copies of the Software.

**Choice of Law:** This License is governed by the laws of England.

---

**End User License Agreement for NAVTEQ European Data  
For Portable Navigation Device Applications**

**The data ("Data") is provided for your personal, internal use only and not for resale. It is protected by copyright, and is subject to the following terms and conditions which are agreed to by you, on the one hand, and ALK Technologies Inc. ("ALK") and its licensors (including their licensors and suppliers) on the other hand.**

© 2006 NAVTEQ. All rights reserved.

## TERMS AND CONDITIONS

**Personal Use Only.** You agree to use this Data together with COPILOT® LIVE for the solely personal, non-commercial purposes for which you were licensed, and not for service bureau, time-sharing or other similar purposes. Accordingly, but subject to the restrictions set forth in the following paragraphs, you may copy this Data only as necessary for your personal use to (i) view it, and (ii) save it, provided that you do not remove any copyright notices that appear and do not modify the Data in any way. You agree not to otherwise reproduce, copy, modify, decompile, disassemble or reverse engineer any portion of this Data, and may not transfer or distribute it in any form, for any purpose, except to the extent permitted by mandatory laws.

**Restrictions.** Except where you have been specifically licensed to do so by ALK, and without limiting the preceding paragraph, you may not (a) use this Data with any products, systems, or applications installed or otherwise connected to or in communication with vehicles, capable of vehicle navigation, positioning, dispatch, real time route guidance, fleet management or similar applications; or (b) with or in communication with any positioning devices or any mobile or wireless-connected electronic or computer devices, including without limitation cellular phones, palmtop and handheld computers, pagers, and personal digital assistants or PDAs.

**Warning.** The Data may contain inaccurate or incomplete information due to the passage of time, changing circumstances, sources used and the nature of collecting comprehensive geographic data, any of which may lead to incorrect results.

**No Warranty.** This Data is provided to you "as is," and you agree to use it at your own risk. ALK and its licensors (and their licensors and suppliers) make no guarantees, representations or warranties of any kind, express or implied, arising by law or otherwise, including but not limited to, content, quality, accuracy, completeness, effectiveness, reliability, fitness for a particular purpose, usefulness, use or results to be obtained from this Data, or that the Data or server will be uninterrupted or error-free.

**Disclaimer of Warranty:** ALK AND ITS LICENSORS (INCLUDING THEIR LICENSORS AND SUPPLIERS) DISCLAIM ANY WARRANTIES, EXPRESS OR IMPLIED, OF QUALITY, PERFORMANCE, MERCHANTABILITY, FITNESS FOR A PARTICULAR PURPOSE OR NON-INFRINGEMENT. Some States, Territories and Countries do not allow certain warranty exclusions, so to that extent the above exclusion may not apply to you.

**Disclaimer of Liability:** ALK AND ITS LICENSORS (INCLUDING THEIR LICENSORS AND SUPPLIERS) SHALL NOT BE LIABLE TO YOU: IN RESPECT OF ANY CLAIM, DEMAND OR ACTION, IRRESPECTIVE OF THE NATURE OF THE CAUSE OF THE CLAIM, DEMAND OR ACTION ALLEGING ANY LOSS,

INJURY OR DAMAGES, DIRECT OR INDIRECT, WHICH MAY RESULT FROM THE USE OR POSSESSION OF THE INFORMATION; OR FOR ANY LOSS OF PROFIT, REVENUE, CONTRACTS OR SAVINGS, OR ANY OTHER DIRECT, INDIRECT, INCIDENTAL, SPECIAL OR CONSEQUENTIAL DAMAGES ARISING OUT OF YOUR USE OF OR INABILITY TO USE THIS INFORMATION, ANY DEFECT IN THE INFORMATION, OR THE BREACH OF THESE TERMS OR CONDITIONS, WHETHER IN AN ACTION IN CONTRACT OR TORT OR BASED ON A WARRANTY, EVEN IF ALK OR ITS LICENSORS HAVE BEEN ADVISED OF THE POSSIBILITY OF SUCH DAMAGES. Some States, Territories and Countries do not allow certain liability exclusions or damages limitations, so to that extent the above may not apply to you.

**Export Control.** You agree not to export from anywhere any part of the Data provided to you or any direct product thereof except in compliance with, and with all licenses and approvals required under, applicable export laws, rules and regulations.

**Entire Agreement.** These terms and conditions constitute the entire agreement between ALK (and its licensors, including their licensors and suppliers) and you pertaining to the subject matter hereof, and supersedes in their entirety any and all written or oral agreements previously existing between us with respect to such subject matter.

**Governing Law.** The above terms and conditions shall be governed by the laws of the Netherlands, without giving effect to (i) its conflict of laws provisions, or (ii) the United Nations Convention for Contracts for the International Sale of Goods, which is explicitly excluded. You agree to submit to the jurisdiction of the Netherlands for any and all disputes, claims and actions arising from or in connection with the Data provided to you hereunder.

---

### Software License Agreement for FONIX TEXT TO SPEECH ENGINE

IMPORTANT! READ THIS License AGREEMENT BEFORE OPENING THIS SOFTWARE PACKET. BY OPENING THE SEALED PACKET OR USING THE SOFTWARE, YOU INDICATE YOUR ACCEPTANCE OF THE ENTIRE AGREEMENT.

#### SOFTWARE License AGREEMENT

This Agreement is a legal agreement between you and Fonix Corporation ("Fonix"), but may be superseded by a separate license agreement that you and Fonix have signed. The software in this packet ("Software") and its media and documentation (collectively, the "Product") are protected by copyright and other intellectual property laws and international treaties. You have no title to, or ownership of, the Product, other than its physical media. Fonix reserves all rights not specifically granted in this Agreement.

**USE AND RESTRICTIONS:** You may operate the Software on only one computer. However, if you have purchased a network or multiple-user license, you may load and use as many single-use copies and/or support as many concurrent users, in the aggregate, as are authorized by such license. You may make only one copy of the Software, retaining the Fonix CD or other media for storage and back-up purposes. The Software does not include updates, maintenance, or support, which may be separately available. This Software and its voice output are for your personal, individual use only. You are not permitted to broadcast or distribute the voice output of the Software (i.e., synthesized speech) to more than one person or to use the Software's voice output for any commercial purposes. You may not modify, adapt, translate, rent, lease, loan, resell for profit, distribute, network, or create derivative works based on any part of the Software. You may not reverse engineer, decompile, or disassemble the Software.

**LIMITED WARRANTY:** Fonix warrants that the Product's physical media will be, under normal use, free from defects in material and workmanship for one year from the date you purchased it. Fonix's entire liability, and your exclusive remedy under this warranty, will be replacement of the defective media without charge. EXCEPT FOR THIS LIMITED WARRANTY, FONIX MAKES NO WARRANTIES, EXPRESS OR IMPLIED, AND DISCLAIMS ANY IMPLIED WARRANTY OR MERCHANTABILITY OR FITNESS FOR A PARTICULAR PURPOSE. Fonix does not warrant that the product is entirely error-free. FONIX'S TOTAL LIABILITY FOR ANY CLAIM OR DAMAGE ARISING OUT OF THE USE OF OR INABILITY TO USE THE SOFTWARE SHALL BE LIMITED TO DIRECT DAMAGES, WHICH SHALL NOT EXCEED THE License FEE YOU PAID. IN NO EVENT SHALL FONIX BE LIABLE FOR LOST PROFITS, LOST DATA, INTERRUPTIONS OF BUSINESS, OR ANY INCIDENTAL OR CONSEQUENTIAL DAMAGES ARISING OUT OF THE USE OF OR INABILITY TO USE THE SOFTWARE, REGARDLESS OF WHETHER FONIX HAS NOTICE OF THE POTENTIAL FOR SUCH LOSS OR DAMAGE.

The above limitations may be superseded by law in some jurisdictions.

**U.S. GOVERNMENT RESTRICTED RIGHTS:** The Software and any accompanying materials are provided with Restricted Rights. Use, duplications, or disclosure by the Government is subject to restrictions as set forth in subparagraph (c)(1)(ii) of The Rights in Technical Data and Computer Software clause at DFARS 252.227-7013 or subparagraphs (c)(1) and (2) of the Commercial Computer Software-Restricted Rights at 48 CFR 52.227-19, as applicable. Contractor/manufacturer is Fonix Corporation at 1225 Eagle Gate Tower, 60 East South Temple St., Salt Lake City, Utah 84111.

**GENERAL:** If any term of this Agreement is found void or unenforceable, all other terms shall remain in full force and effect. This Agreement shall be governed by the internal laws of Utah. If you breach any term of this Agreement, Fonix may terminate this license and you must return all copies of the Product to Fonix.

---

**ALK Technologies, Inc. License AGREEMENT**  
**CoPilot | Pocket PC 6 with AUSTRALIAN DATA**  
**LICENSES: 1 User**

THIS IS A LEGAL AGREEMENT BETWEEN YOU, THE USER (either an individual or an entity), AND ALK Technologies, Inc. ("ALK"). IF YOU DO NOT AGREE TO THE TERMS OF THIS License, DO NOT INSTALL THE SOFTWARE. Promptly return the package and accompanying materials (including written materials and containers) to the dealer from which you obtained them for a full refund.

INSTALLING THIS SOFTWARE INDICATES YOUR ACCEPTANCE OF THE TERMS OF THIS License.

**I. Grant of License:**

This ALK License Agreement ("License") is a single-user, non-exclusive, non-transferable license agreement and not an agreement for sale. ALK hereby licenses the on-line User Guide and CD-ROM software identified above (collectively, "the Software") to you under the following terms and conditions.

The Software may not be loaded onto a network of any type. You may use the Software on any compatible personal computer, provided you use it on only one computer at a time. The Software is "in use" on a computer when it is loaded into the temporary memory (i.e., RAM) or installed into the permanent memory (e.g., hard disk, CD-ROM, or other storage device) of that computer. If the Software is permanently installed on the hard disk or other storage device of a computer (other than a network server) and one person uses that computer more than 80 percent of the time it is in use, then that person may also use the Software on a portable or home computer. You may make a single back-up or archival copy of the Software for back-up purposes only. You may not transfer this Software or assign this License Agreement to another party.

You are NOT permitted, during the term of this License Agreement and thereafter to:

- Use the Software on a network or file server.
- Use or copy the Software or the accompanying documentation except as provided in this License Agreement.
- Alter, merge, modify, or adapt the Software or the accompanying documentation in any way including disassembling or decompiling this Software.
- Loan, lease, sell, transfer, or sublicense the Software or the accompanying documentation.
- Copy, loan, lease, sell, transfer, or sublicense any output of this Software (including but not limited to printed maps and driving itineraries); However, you may provide a limited number of printed copies (up to 10) of a single trip to family members or traveling companions.

- You are not permitted to use the Software for motor-carrier tariff or routing purposes.
- Electronic reproduction and transmission of output to remote locations are not permitted.

ALK retains all rights not expressly granted. Nothing in this License Agreement constitutes a waiver of ALK's rights under the U.S. copyright laws or other applicable copyright laws or any other federal or state law.

## 2. Term:

This License is effective upon receipt by you of the Software and upon opening the package. The License is effective until terminated. You may terminate this License at any time by returning all copies of the Software, and any portions thereof, to ALK. The License terminates automatically if you fail to comply with any of the terms of this License Agreement. You agree upon such termination to return or destroy this CD-ROM and all other copies of the Software and certify in writing to ALK that you have done so.

## 3. Limited Warranty:

ALK warrants that all media on which the Software is furnished shall, for a period of 90 days from delivery (the "Warranty Period") be free, in normal use, from defects in material and workmanship. ALK will have no responsibility to replace any disc(s) that have been damaged by accident, abuse, or misapplication.

Customer Remedies: ALK's entire liability and your exclusive remedy shall be, at ALK's option, either (a) return of the price paid or (b) replacement of the media that does not meet ALK's Limited Warranty, and that is returned to ALK with a copy of your receipt.

Except as specifically provided above, ALK MAKES NO OTHER WARRANTY OR REPRESENTATION, EITHER EXPRESS OR IMPLIED, WITH RESPECT TO THE SOFTWARE OR DOCUMENTATION, INCLUDING ANY WARRANTY AS TO THE QUALITY, PERFORMANCE, MERCHANTABILITY, OR FITNESS FOR A PARTICULAR PURPOSE. IN NO EVENT WILL ALK BE LIABLE FOR DIRECT DAMAGES IN EXCESS OF THE License FEE OR ANY INDIRECT, SPECIAL, INCIDENTAL, OR CONSEQUENTIAL DAMAGES ARISING OUT OF THE USE OR INABILITY TO USE THE SOFTWARE OR DOCUMENTATION, EVEN IF ADVISED OF THE POSSIBILITY OF SUCH DAMAGES. IN NO CASE SHALL ALK'S LIABILITY EXCEED THE AMOUNT OF THE License FEE.

While the information contained in the Software was believed to have been correct at the time of publication, ALK cannot guarantee its accuracy and shall not be subject to liability for any errors or omissions. Information in the Software and its accompanying preprinted materials is subject to change without notice and does not represent a commitment or endorsement on the part of ALK. Routes and miles generated by the Software are not suitable for commercial truck use.

THE WARRANTY AND REMEDIES SET FORTH ABOVE ARE EXCLUSIVE AND IN LIEU OF ALL OTHERS, ORAL OR WRITTEN, EXPRESS OR IMPLIED. No ALK dealer, distributor, agent, or employee is authorized to make any modification or addition to this warranty. Some jurisdictions do not allow the exclusion or limitation of implied warranties or limitation of liability for incidental or consequential damages, so the above limitation or exclusion may not apply to you.

## 4. Licensee's Responsibility:

You assume all responsibility for, and ALK shall not be liable for, all action taken, decisions made, and advice given as a result of your use of the Software.

## 5. General:

The export or re-export of the Software may be restricted by the laws of the United States and other countries, and you shall not export this Software in violation of any such applicable laws. This License Agreement is governed by the laws of the State of New Jersey.

---

## Software License Agreement for FONIX TEXT TO SPEECH ENGINE

IMPORTANT! READ THIS License AGREEMENT BEFORE OPENING THIS SOFTWARE PACKET. BY OPENING THE SEALED PACKET OR USING THE SOFTWARE, YOU INDICATE YOUR ACCEPTANCE OF THE ENTIRE AGREEMENT.

### SOFTWARE License AGREEMENT

This Agreement is a legal agreement between you and Fonix Corporation ("Fonix"), but may be superseded by a separate license agreement that you and Fonix have signed. The software in this packet ("Software") and its media and documentation (collectively, the "Product") are protected by copyright and other intellectual property laws and international treaties. You have no title to, or ownership of, the Product, other than its physical media. Fonix reserves all rights not specifically granted in this Agreement.

USE AND RESTRICTIONS: You may operate the Software on only one computer. However, if you have purchased a network or multiple-user license, you may load and use as many single-use copies and/or support as many concurrent users, in the aggregate, as are authorized by such license. You may make only one copy of the Software, retaining the Fonix CD or other media for storage and backup purposes. The Software does not include updates, maintenance, or support, which may be separately available. This Software and its voice output are for your personal, individual use only. You are not permitted to broadcast or distribute the voice output of the Software (i.e., synthesized speech) to more than one person or to use the Software's voice output for any commercial purposes. You may not modify, adapt, translate, rent, lease, loan, resell for profit, distribute, net-

work, or create derivative works based on any part of the Software. You may not reverse engineer, decompile, or disassemble the Software.

**LIMITED WARRANTY:** Fonix warrants that the Product's physical media will be, under normal use, free from defects in material and workmanship for one year from the date you purchased it. Fonix's entire liability, and your exclusive remedy under this warranty, will be replacement of the defective media without charge. EXCEPT FOR THIS LIMITED WARRANTY, FONIX MAKES NO WARRANTIES, EXPRESS OR IMPLIED, AND DISCLAIMS ANY IMPLIED WARRANTY OR MERCHANTABILITY OR FITNESS FOR A PARTICULAR PURPOSE. Fonix does not warrant that the product is entirely error-free. FONIX'S TOTAL LIABILITY FOR ANY CLAIM OR DAMAGE ARISING OUT OF THE USE OF OR INABILITY TO USE THE SOFTWARE SHALL BE LIMITED TO DIRECT DAMAGES, WHICH SHALL NOT EXCEED THE License FEE YOU PAID. IN NO EVENT SHALL FONIX BE LIABLE FOR LOST PROFITS, LOST DATA, INTERRUPTIONS OF BUSINESS, OR ANY INCIDENTAL OR CONSEQUENTIAL DAMAGES ARISING OUT OF THE USE OF OR INABILITY TO USE THE SOFTWARE, REGARDLESS OF WHETHER FONIX HAS NOTICE OF THE POTENTIAL FOR SUCH LOSS OR DAMAGE. The above limitations may be superseded by law in some jurisdictions.

**U.S. GOVERNMENT RESTRICTED RIGHTS:** The Software and any accompanying materials are provided with Restricted Rights. Use, duplications, or disclosure by the Government is subject to restrictions as set forth in subparagraph (c)(1)(ii) of The Rights in Technical Data and Computer Software clause at DFARS 252.227-7013 or subparagraphs (c)(1) and (2) of the Commercial Computer Software-Restricted Rights at 48 CFR 52.227-19, as applicable. Contractor/manufacturer is Fonix Corporation at 1225 Eagle Gate Tower, 60 East South Temple St., Salt Lake City, Utah 84111.

**GENERAL:** If any term of this Agreement is found void or unenforceable, all other terms shall remain in full force and effect. This Agreement shall be governed by the internal laws of Utah. If you breach any term of this Agreement, Fonix may terminate this license and you must return all copies of the Product to Fonix.

---

## **License AGREEMENT FOR WHEREIS™ DATA**

### **I. GRANT OF License**

Telstra Corporation Limited (ABN 33 051 775 556) ("Telstra") through its agent Sensis Pty Ltd (ABN 30 007 423 912) ("Licensor") grants you a non-exclusive, non-transferable license to use the mapping data ("Whereis Data") contained in this CD-ROM on the following terms ("License"). The License commences when you click on the "I Agree" button at the end of these terms and continues until terminated in accordance with this agreement.

### **2. RIGHTS OF USE**

You may only use the Whereis Data for your own personal use. You may only install and use the Whereis Data on one device at any one time. You must not copy, reverse engineer, adapt, modify, distribute, publish in any form or permit any other person to use or deal with the whole or any part of the Whereis Data. You must use reasonable steps to prevent any unauthorised copying or use of the Whereis Data; and immediately notify the Licensor if you become aware of any unauthorised copying or use of the Whereis Data by any person or of any other infringement of the Licensor's rights in relation to the Whereis Data. The contact details of the Licensor are as follows: Sensis Pty Ltd, 181-189 Victoria Parade, Collingwood, Victoria 3066, Australia.

### **3. PROPERTY AND OWNERSHIP**

All intellectual property rights (including copyright and any trade marks used by the Licensor and Telstra) in and to the Whereis Data are the sole and exclusive property of, or a use under license by, the Licensor (or its licensors). Except to the extent permitted by this License, you do not acquire any intellectual property rights in or to the Whereis Data.

### **4. EXCLUSION OF LIABILITY**

To the extent permitted by law, the Licensor does not make any warranties of any kind, whether express or implied, including any implied warranty of merchantability or fitness of the Whereis Data for a particular purpose. Licensor's liability for breach of any condition or warranty implied by statute which cannot be excluded is (to the extent permitted by law) limited to, in the case of the supply of goods, the repair, replacement or re-supply of the goods or of equivalent goods or the payment of the cost of repairing or replacing the goods or of acquiring equivalent goods; and in the case of the supply of services, supplying the services again, or the payment of the cost of having the services supplied again, provided that there shall be no such limitation for breach of such a condition or warranty where the relevant law prohibits such limitation.

Subject to this clause 4, the Licensor, its employees, agents and contractors will not be liable (whether in contract, tort or otherwise) to you or any other person for any loss, costs, damage or injury of any kind whatsoever (including incidental or consequential loss) wholly or partly arising out of or in connection with the use of or inability to use the Whereis Data.

### **5. TERMINATION**

The Licensor may terminate the License immediately if you are in breach of any provision of this agreement. Your rights under this agreement cease immediately upon termination of the License and you must immediately cease using the Whereis Data; and at the Licensor's election, return to the Licensor at the details described in clause 2.5 or destroy all materials bearing or containing the Whereis Data and, if required by the Licensor, shall certify that the Whereis Data and all such copies have been returned or destroyed. Termination of the License does not affect any rights or remedies which accrued prior to termination.



## 6. GENERAL

You may not assign or sub-license your rights under this License. This agreement constitutes the entire agreement between the parties. Any previous agreements, understandings and negotiations cease to have any effect. A provision of, or a right created under, this agreement may not be waived except in writing signed by the Licensor. This agreement is governed by the laws in force in the State of Victoria, Australia. A reference to a person includes a reference to a firm, corporation or other corporate body.

## Free Manuals Download Website

<http://myh66.com>

<http://usermanuals.us>

<http://www.somanuals.com>

<http://www.4manuals.cc>

<http://www.manual-lib.com>

<http://www.404manual.com>

<http://www.luxmanual.com>

<http://aubethermostatmanual.com>

Golf course search by state

<http://golfingnear.com>

Email search by domain

<http://emailbydomain.com>

Auto manuals search

<http://auto.somanuals.com>

TV manuals search

<http://tv.somanuals.com>