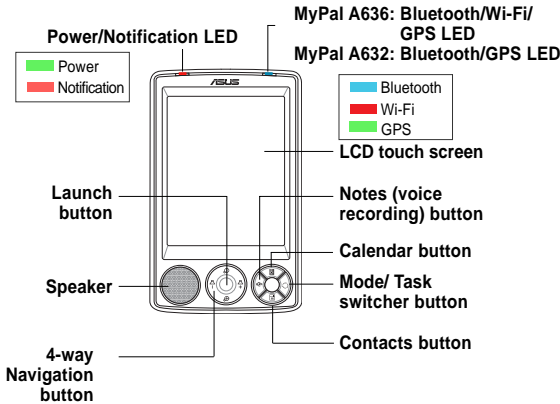


MYPAL **GPS** Pocket PC A636 / A632

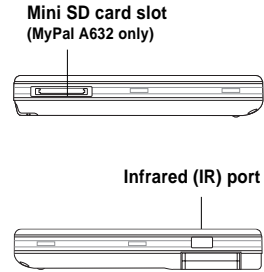


Getting to know MyPal

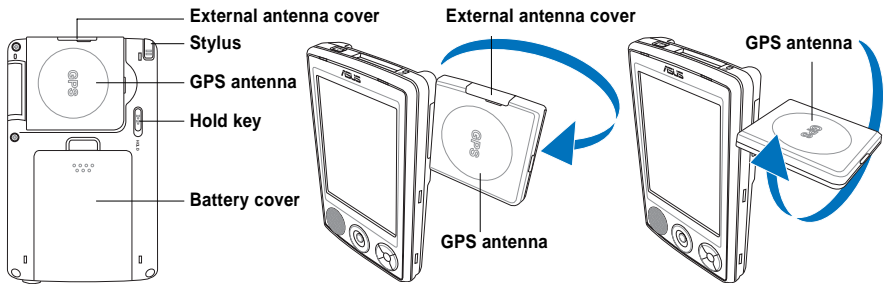
Front features



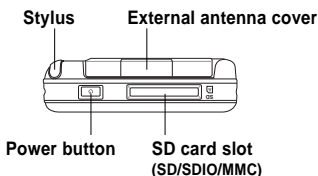
Side features



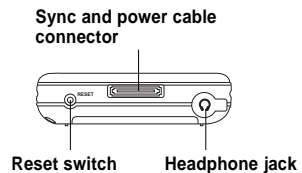
Back features



Top features



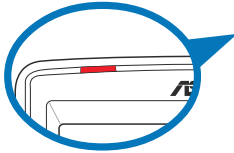
Bottom features



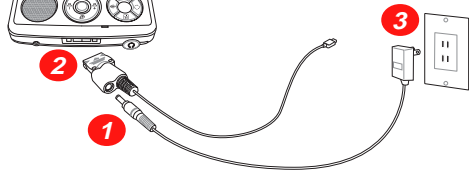
Setting up MyPal

NOTE Install the battery before connecting the AC adapter to a power source. See “Installing and removing the battery” of the User Manual for proper battery installation.

Connecting power adapter and charging the battery



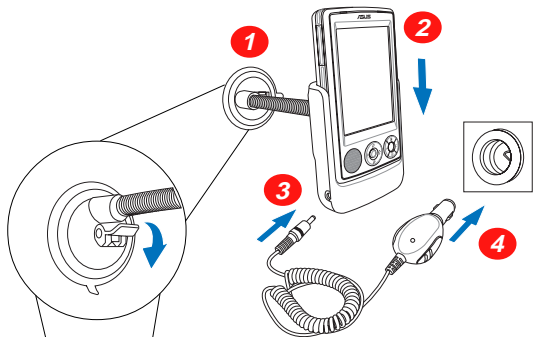
NOTE The charging status LED shows a steady red light as battery is being charged and steady green when battery is fully charged.



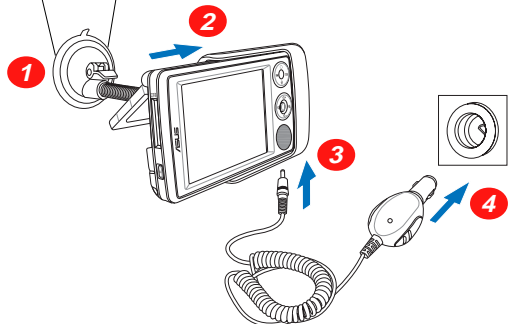
Using the GPS car kit

The GPS car kit includes a car holder and gooseneck. Use the car charger to supply DC power to the device through the car's cigarette lighter socket.

1. Attach the gooseneck to the car's windshield.
2. Carefully slide the device into the holder.
3. Connect the car charger to the power jack at the lower side of the holder.
4. Plug the other end of the car charger to the cigarette lighter socket.



Vertical orientation



Horizontal orientation

NOTE The device must carefully be placed into the holder to avoid damaging the 26-pin device connector and causing the device to breakdown.

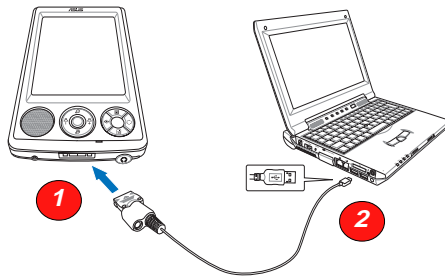
Synchronizing MyPal

Use the Companion CD to install Microsoft® ActiveSync® on your desktop or notebook. ActiveSync is already installed on your device.

NOTE Do not connect your device to your computer until you have installed ActiveSync.

Connecting to the computer

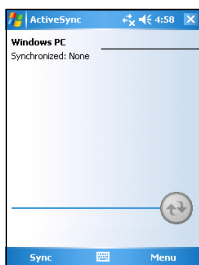
When MyPal A636/A632 is connected to the computer's USB port, it allows data synchronization and battery charging at the same time.



Synchronizing with the computer

Upon connection, your device is automatically synchronized with your computer.

Synchronization status on MyPal

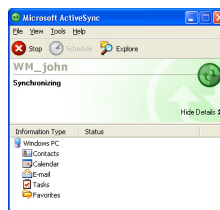


Tap to start or stop synchronization

Connection status and synchronization information

Tap to open a menu where you can synchronize via IR, Bluetooth, or change synchronization settings

Synchronization status on your computer

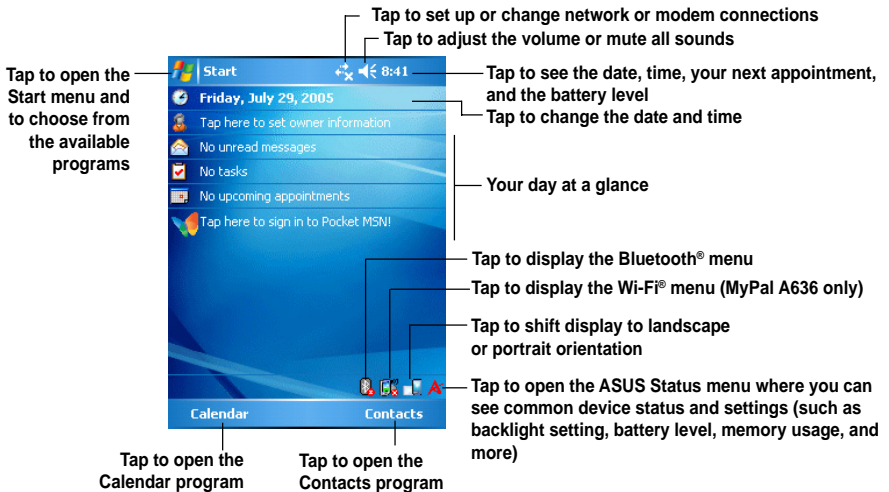


Using Windows Mobile™ 5.0

MyPal runs on Microsoft Windows Mobile™ 5.0 Pocket PC Edition, and you will find applications such as Outlook E-mail, PowerPoint Mobile, Word Mobile, Excel Mobile, Pocket MSN, Internet Explorer and more.

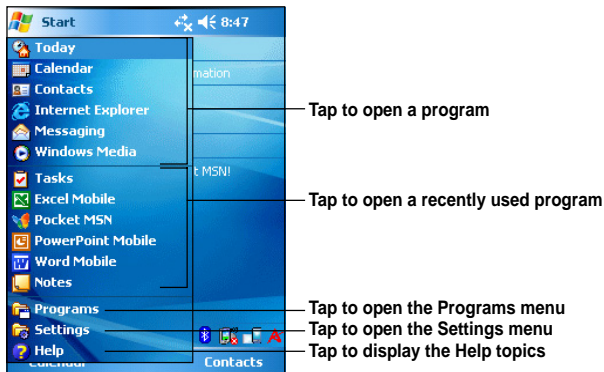
Today screen

The Today screen appears when you turn on your device. The Today screen gives you a summary of the important information for the day. Tap any of the listed items with the stylus to display the details.



Start menu

From the Start menu, you can select programs, settings, and Help topics. To open the Start menu, tap the  icon from the top of the screen.

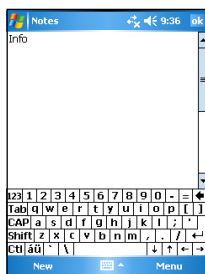


Entering Information

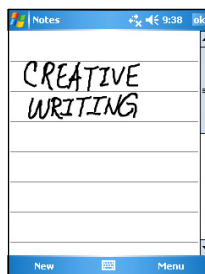
Use any one of the following ways to enter information on your device

- **Typing** Tap the keyboard icon at the bottom of the screen, then key in the word.
- **Writing** Tap **Menu > Draw** and use the stylus to write. Then, select the text and tap **Menu > Tools > Recognize**.
- **Drawing** Tap **Menu > Draw** and then use the stylus to draw.
- **Recording** Tap **Menu > View Recording Toolbar**. Then, tap the *Record* button on the toolbar.

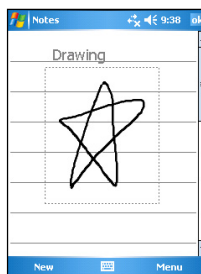
Typing



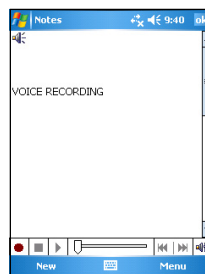
Writing



Drawing



Recording



Reference information

Refer to the following sources for additional information on the ASUS MyPal A636/A632 Pocket PC.

Operation MyPal A636/A632 User Manual

Online Help Windows® Mobile 5.0 Help (*on your device*)
ActiveSync® Help (*on your computer*)

Web sites and technical support

Technical support: +886-2-2894-3447

Support Fax: +886-2-2890-7698

Support e-mail: tsd@asus.com.tw

Web site: www.asus.com.tw

Software download: support.asus.com.tw

Pocket PC web site: www.microsoft.com/mobile/pocketpc

Free Manuals Download Website

<http://myh66.com>

<http://usermanuals.us>

<http://www.somanuals.com>

<http://www.4manuals.cc>

<http://www.manual-lib.com>

<http://www.404manual.com>

<http://www.luxmanual.com>

<http://aubethermostatmanual.com>

Golf course search by state

<http://golfingnear.com>

Email search by domain

<http://emailbydomain.com>

Auto manuals search

<http://auto.somanuals.com>

TV manuals search

<http://tv.somanuals.com>