

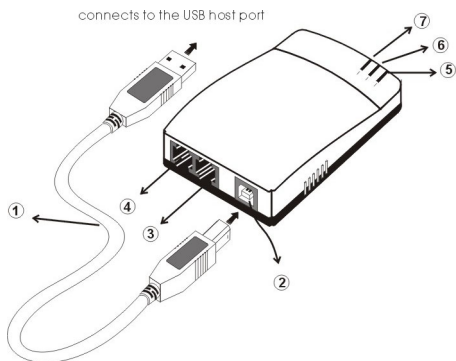
USB LAN ISDN

Quick Installation Guide

Table of Contents

PARTS NAMES AND FUNCTIONS.....	1
HARDWARE INSTALLATION	2
INSTALLING THE USB LAN ISDN.....	2
<i>Connecting the USB Cabling</i>	<i>2</i>
<i>Connecting to an ISDN Network.....</i>	<i>2</i>
<i>Connecting to the LAN Network.....</i>	<i>2</i>
SOFTWARE INSTALLATION	3
WINDOWS 98SE INSTALLATION	3
WINDOWS 2000 INSTALLATION	9
WINDOWS ME INSTALLATION	12
WINDOWS XP INSTALLATION	16

Parts Names and Functions



1. **USB Cable:** connects the USB LAN ISDN to the USB host port of your computer.
2. **USB Port:** connects to the USB cable's square end.
3. **LAN Port:** connects to a LAN Cable.
4. **ISDN Port:** connects to an ISDN Cable.
5. **Link Indicator:** glows green when 10/100M Fast Ethernet is linked.
6. **B1 Indicator:** glows green when the transmitting / receiving data in 64 Kbps speed mode.
7. **B2 Indicator:** glows green when the transmitting / receiving data in 128 Kbps speed mode.

HARDWARE INSTALLATION

Installing the USB LAN ISDN

Connecting the USB Cabling

1. Insert the USB cable's square end into the adapter's USB port.
2. Insert the rectangular end of the USB cable into the USB host port on your PC.

Connecting to an ISDN Network

1. Connect one end of an ISDN cable into the adapter's ISDN port.
2. Connect the other end of the ISDN cable into S/T port on NT1 ISDN device.

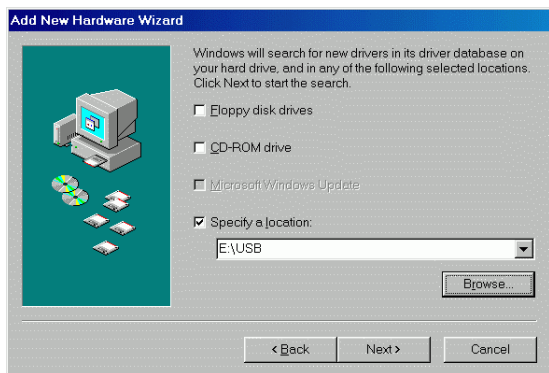
Connecting to the LAN Network

1. Connect one end of the LAN cable into the adapter's LAN port.
2. Connect the other end of the LAN cable to a Hub.

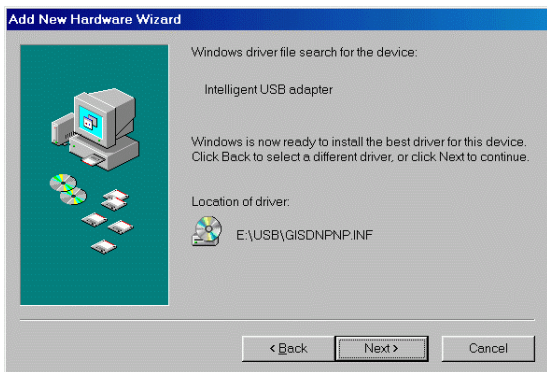
SOFTWARE INSTALLATION

Windows 98SE Installation

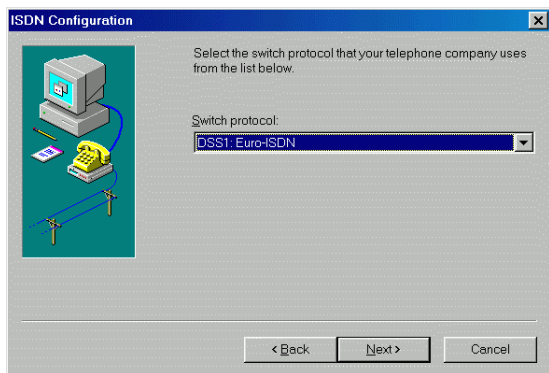
1. Once the device is connected, windows 98SE will automatically detect the device and appear the following figure. Click **Next** to continue.
2. Select **Search for the best driver for your device (Recommended)** and click **Next**.
3. Insert the device driver into your CD-ROM. Select **Specify a location**, direct Windows 98SE to the location where the driver stored (e.g. **E:\USB**) and click **Next**. Windows 98SE will search for the suitable driver for the software installation need.



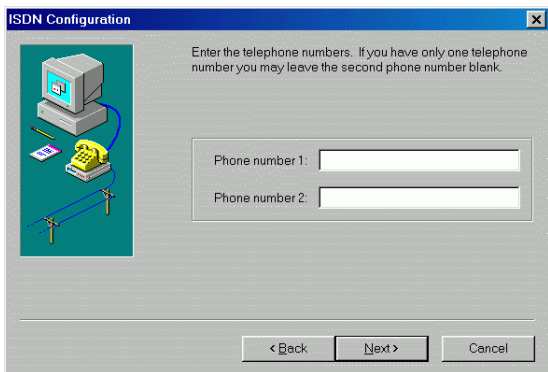
4. Click **Next**. Windows 98SE will start copying necessary files onto your system.



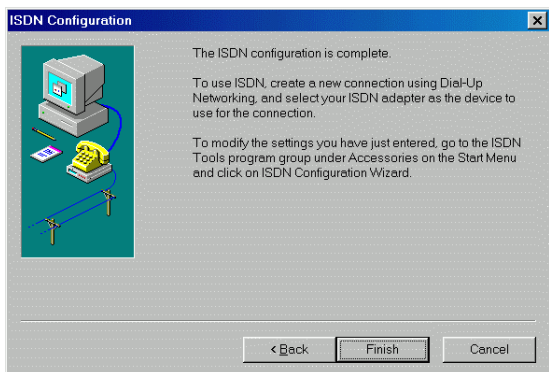
5. In ISDN Configuration, click **Next**.
6. Select the switch protocol that your telephone company uses and click **Next**.



7. Enter the telephone numbers that your ISP provided and click **Next**.



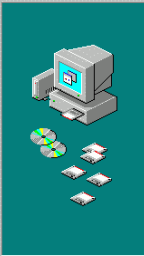
8. Click **Finish**.



9. Click **Finish** to continue the software installation.

10. Windows 98SE will automatically detect the device and appear the following figure. Follow the on-screen instructions.

Add New Hardware Wizard



This wizard searches for new drivers for:

USB 10/100 Ethernet

A device driver is a software program that makes a hardware device work.

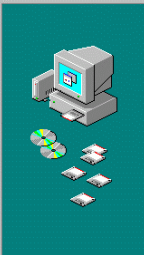
< Back

Next >

Cancel

11. Select **Search for the best driver for your device (recommended)** and click **Next**.
12. Select **Specify a location**, direct Windows 98SE to the location where the driver stored (e.g. **E:\USB**) and click **Next**. Windows 98SE will search for the suitable driver for the software installation need.
13. Click **Next**. Windows 98SE will start copying necessary files onto your system.

Add New Hardware Wizard



Windows driver file search for the device:

Intelligent USB 10/100 Network Adapter

Windows is now ready to install the best driver for this device. Click Back to select a different driver, or click Next to continue.

Location of driver:



E:\USB\USB100.INF

< Back

Next >

Cancel

14. The installation program will proceed automatically. Click **Finish**.



15. When Windows prompts you to restart your computer, click **Yes**.
16. To verify if your network adapter exists in your computer and well enabled, you can perform the following steps.
17. Go to **Start** → **Settings** → **Control Panel** → **Systems** → **Device Manager**.
18. Click **Intelligent ISDN Drivers**, **Network adapters** and **Universal Serial Bus controllers** to expand. If **Intelligent CAPI 2.0 driver**, **Intelligent USB adapter**, **Intelligent ISDN WAN miniport**, **Intelligent USB 10/100 Network Adapter** and **Generic USB Hub** are found, that means your network adapter exists and enabled. If not, consult your distributor for technical support.

System Properties



General | Device Manager | Hardware Profiles | Performance

View devices by type View devices by connection

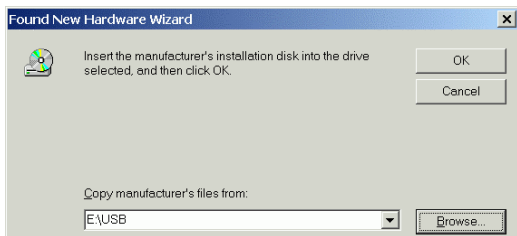
- [-] Intelligent ISDN Drivers
 - Intelligent CAPI 2.0 driver
 - Intelligent USB adapter
- [+] Keyboard
- [+] Monitors
- [+] Mouse
- [-] Network adapters
 - Dial-Up Adapter
 - Intelligent ISDN WAN miniport
 - Intelligent USB 10/100 Network Adapter
- [+] Other devices
- [+] PCMCIA socket
- [+] Ports (COM & LPT)
- [+] System devices
- [-] Universal Serial Bus controllers
 - Generic USB Hub

Properties Refresh Remove Print...

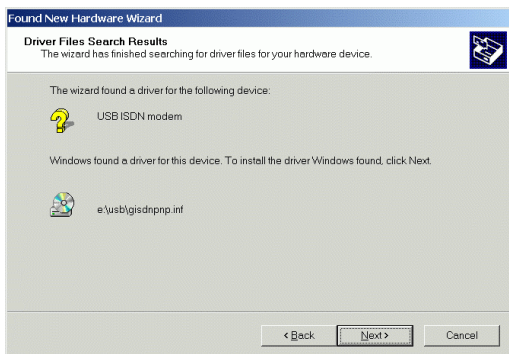
OK Cancel

Windows 2000 Installation

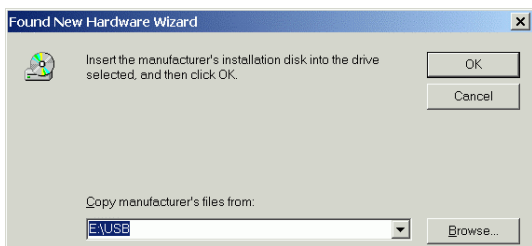
1. Once the device is connected, Windows 2000 will automatically detect the device and appear the following figure. Click **Next** to continue.
2. Select **Search for a suitable driver for my device (Recommended)** and click **Next**.
3. Select **Specify a location** and click **Next**.
4. Insert the device driver into your CD-ROM. Click **Browse**, direct Windows 2000 to the location where the driver stored (e.g.: **E:\USB**) and click **OK**.



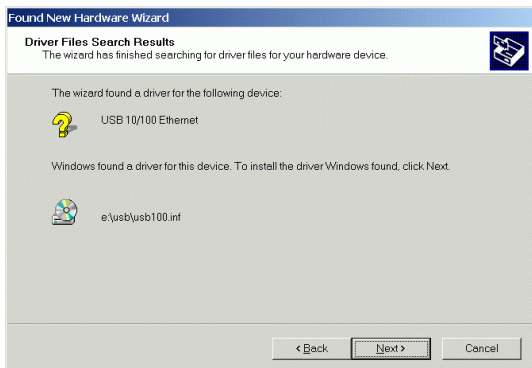
5. Click **Next**. Windows 2000 will start copying necessary files onto your system.



6. Click **Finish** to continue.
7. Windows 2000 will automatically detect the device and appear the following figure. Click **Next** to continue.
8. Select **Search for a suitable driver for my device (recommended)** and click **Next**.
9. Select **Specify a location** and click **Next**.
10. Click **Browse**, direct Windows 2000 to the location where the driver stored (e.g.: **E:\USB**) and click **OK**.



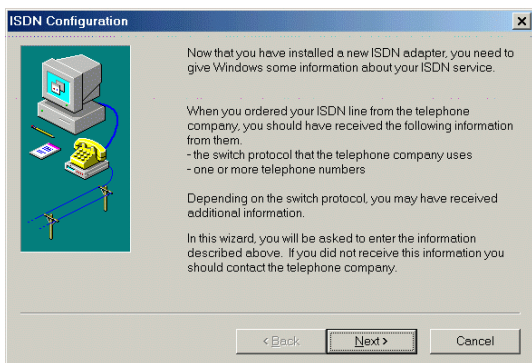
11. Click **Next**. Windows 2000 will start copying necessary files onto your system.



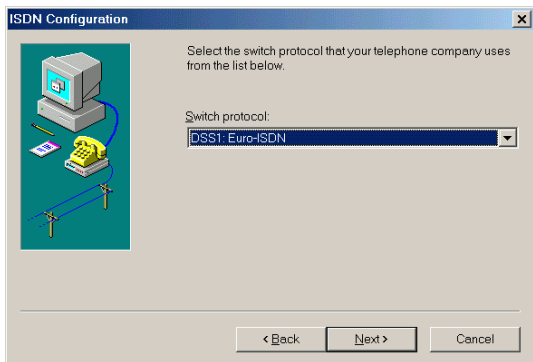
12. Click **Yes** to continue.
13. Click **Finish** to complete the software installation.
14. To verify if your network adapter exists in your computer and well enabled, you can perform the following steps.
15. Go to **Start → Settings → Control Panel → Systems → Hardware → Device Manager**.
16. Click **Intelligent ISDN Drivers, Network adapters** and **Universal Serial Bus controllers** to expand. If **Intelligent CAPI 2.0 driver, Intelligent USB adapter, Intelligent ISDN WAN miniport, Intelligent USB 10/100 Network Adapter** and **Generic USB Hub** are found, that means your network adapter exists and enabled. If not, consult your distributor for technical support.

Windows ME Installation

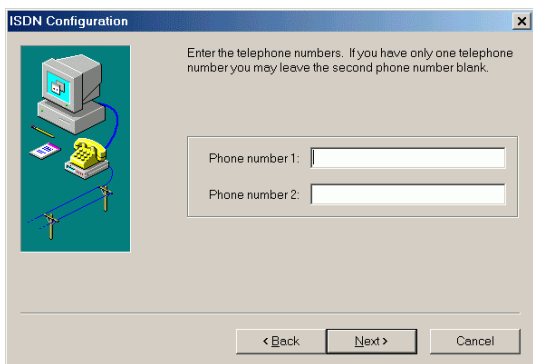
1. Once the device is connected, Windows ME will automatically detect the device and appear the following figure. Insert the device driver into your CD-ROM drive, select **Automatic search for...** and click **Next**. Windows ME will search for appropriate driver and copy necessary files onto your system.
2. When the **ISDN Configuration** windows appears, click **Next**.



3. Select appropriate **Switch Protocol** and click **Next**.



4. Enter the **Phone numbers** that your ISP provided and click **Next**.



5. Click **Finish**.

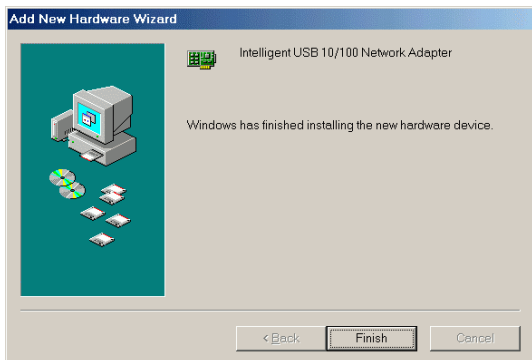


6. Click **Finish** to continue.



7. Windows ME will automatically detect the device and appear the following figure. Select **Automatic search for...** and click **Next**. Windows ME will search for appropriate driver and copy necessary files onto your system.

8. Click **Finish** to complete the installation.



9. When Windows prompts you to restart your computer, click **Yes**.
10. To verify if your network adapter exists in your computer and well enabled, you can perform the following steps.
11. Go to **Start** → **Settings** → **Control Panel**, → **Systems** → **Hardware** → **Device Manager**.
12. Click **Intelligent ISDN Drivers**, **Network adapters** and **Universal Serial Bus controllers** to expand. If **Intelligent CAPI 2.0 driver**, **Intelligent USB adapter**, **Intelligent ISDN WAN miniport**, **Intelligent USB 10/100 Network Adapter** and **Generic USB Hub** are found, that means your network adapter exists and enabled. If not, consult your distributor for technical support.

Windows XP Installation

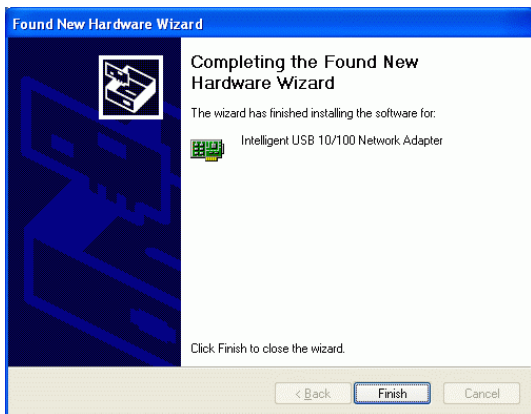
1. Once the device is connected, Windows XP will automatically detect the device and appear the following figure. Insert the device driver into your CD-ROM drive, select **Install the software automatically...** and click **Next**. Windows XP will search for appropriate driver and copy necessary files onto your system.
2. Click **Continue Anyway**.



3. Click **Finish** to continue.
4. Windows XP will automatically detect the device and appear the following figure. Select **Install the software automatically...** and click **Next**.
5. Click **Continue Anyway**.



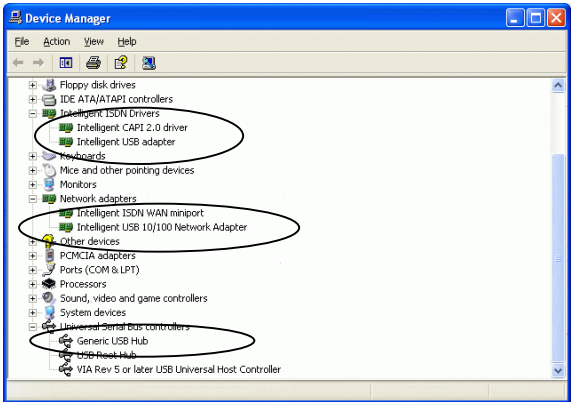
6. Click **Finish** to complete the software installation.



7. To verify if your network adapter exists in your computer and well enabled, you can perform the following steps.
8. Go to **Start** → **Settings** → **Control Panel**,

→ Systems → Hardware → Device Manager.

9. Click **Intelligent ISDN Drivers**, **Network adapters** and **Universal Serial Bus controllers** to expand. If **Intelligent CAPI 2.0 driver**, **Intelligent USB adapter**, **Intelligent ISDN WAN miniport**, **Intelligent USB 10/100 Network Adapter** and **Generic USB Hub** are found, that means your network adapter exists and enabled. If not, consult your distributor for technical support.



Free Manuals Download Website

<http://myh66.com>

<http://usermanuals.us>

<http://www.somanuals.com>

<http://www.4manuals.cc>

<http://www.manual-lib.com>

<http://www.404manual.com>

<http://www.luxmanual.com>

<http://aubethermostatmanual.com>

Golf course search by state

<http://golfingnear.com>

Email search by domain

<http://emailbydomain.com>

Auto manuals search

<http://auto.somanuals.com>

TV manuals search

<http://tv.somanuals.com>