



Please **DO NOT** return product to the retail store.
 For technical assistance and product return information, please call
 Customer Care: **877-221-1252** Mon. - Fri. 8:00 A.M. to 4:30 P.M. (CST)

www.chaneyinstrument.com

LIMITED ONE YEAR WARRANTY

Chaney Instrument Company warrants that all products it manufactures to be of good material and workmanship and to be free of defects if properly installed and operated for a period of one year from date of purchase. **REMEDY FOR BREACH OF THIS WARRANTY IS EXPRESSLY LIMITED TO REPAIR OR REPLACEMENT OF DEFECTIVE ITEMS.** Any product which, under normal use and service, is proven to breach the warranty contained herein within ONE YEAR from date of sale will, upon examination by Chaney, and at its sole option, be repaired or replaced by Chaney. In all cases, transportation costs and charges for returned goods shall be paid for by the purchaser. Chaney hereby disclaims all responsibility for such transportation costs and charges. This warranty will not be breached, and Chaney will give no credit for products it manufactures which shall have received normal wear and tear, been damaged, tampered, abused, improperly installed, damaged in shipping, or repaired or altered by others than authorized representatives of Chaney.

THE ABOVE-DESCRIBED WARRANTY IS EXPRESSLY IN LIEU OF ALL OTHER WARRANTIES, EXPRESS OR IMPLIED, AND ALL OTHER WARRANTIES ARE HEREBY EXPRESSLY DISCLAIMED, INCLUDING WITHOUT LIMITATION THE IMPLIED WARRANTY OF MERCHANTABILITY AND THE IMPLIED WARRANTY OF FITNESS FOR A PARTICULAR PURPOSE. CHANEY EXPRESSLY DISCLAIMS ALL LIABILITY FOR SPECIAL, CONSEQUENTIAL OR INCIDENTAL DAMAGES, WHETHER ARISING IN TORT OR BY CONTRACT FROM ANY BREACH OF THIS WARRANTY. SOME STATES DO NOT ALLOW THE EXCLUSION OR LIMITATION OF INCIDENTAL OR CONSEQUENTIAL DAMAGES, SO THE ABOVE LIMITATION OR EXCLUSION MAY NOT APPLY TO YOU. CHANEY FURTHER DISCLAIMS ALL LIABILITY FROM PERSONAL INJURY RELATING TO ITS PRODUCTS TO THE EXTENT PERMITTED BY LAW. BY ACCEPTANCE OF ANY OF CHANEY'S EQUIPMENT OR PRODUCTS, THE PURCHASER ASSUMES ALL LIABILITY FOR THE CONSEQUENCES ARISING FROM THEIR USE OR MISUSE. NO PERSON, FIRM OR CORPORATION IS AUTHORIZED TO ASSUME FOR CHANEY ANY OTHER LIABILITY IN CONNECTION WITH THE SALE OF ITS PRODUCTS. FURTHERMORE, NO PERSON, FIRM OR CORPORATION IS AUTHORIZED TO MODIFY OR WAIVE THE TERMS OF THIS PARAGRAPH, AND THE PRECEDING PARAGRAPH, UNLESS DONE IN WRITING AND SIGNED BY A DULY AUTHORIZED AGENT OF CHANEY. THIS WARRANTY GIVES YOU SPECIFIC LEGAL RIGHTS, AND YOU MAY ALSO HAVE OTHER RIGHTS WHICH VARY FROM STATE TO STATE.

For in-warranty repair, please contact:
 Customer Care Department
 Chaney Instrument Company
 965 Wells Street
 Lake Geneva, WI 53147

Chaney Customer Care
877-221-1252
Mon-Fri 8:00 a.m. to 4:30 p.m. CST

www.chaneyinstrument.com



This device complies with part 15 of the FCC rules. Operation is subject to the following two conditions:
 1- This device may NOT cause harmful interference, and
 2- This device must accept any interference received, including interference that may cause undesired operation.

NOTE: This equipment has been tested and found to comply with the limits for a Class B digital device, pursuant to Part 15 of the FCC rules. These limits are designed to provide reasonable protection against harmful interference in a residential installation. This equipment generates, uses and can radiate radio frequency energy and, if not installed and used in accordance with the instructions, may cause harmful interference to radio communications. However, there is no guarantee that interference will not occur in a particular installation. If this equipment does cause harmful interference to radio or television reception, which can be determined by turning the equipment off and on, the user is encouraged to try to correct the interference by one or more of the following measures:

- Reorient or relocate the receiving antenna.
- Increase the separation between the equipment and the receiver.
- Connect the equipment into an outlet on a circuit different from that to which the receiver is connected.
- Consult the dealer or an experienced radio/TV technician for help.

NOTE: The manufacturer is not responsible for any radio or TV interference caused by unauthorized modifications to this equipment. Such modifications could void the user authority to operate the equipment.

Patent numbers: 5,978,738; 6,076,044; 6,597,990
 ACURITE® is a registered trademark of the Chaney Instrument Co.
 Lake Geneva, WI

00305TG INST 112310

ACURITE®
 DESIGNED TO WORK FOR YOU™

Window Thermometer
 model #00305TG



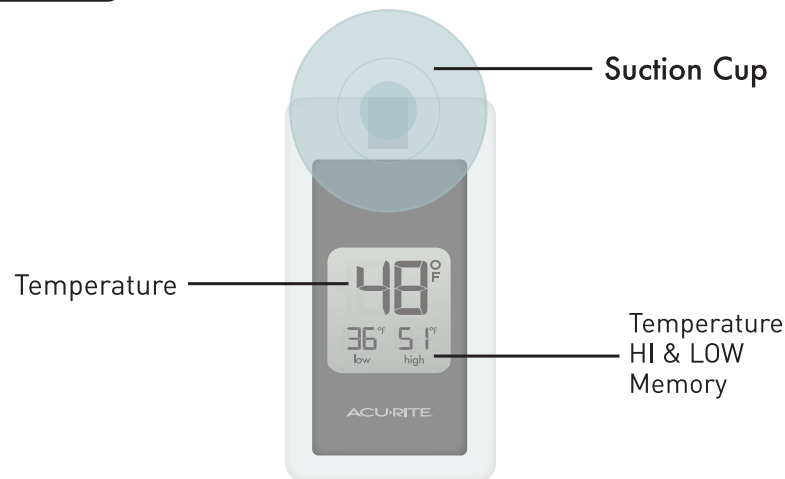
Instruction Manual

Package Contents:
 (1) Window Thermometer
 (1) Instruction Manual

Thank you for purchasing this ACURITE® product. This window thermometer features a reversible suction cup to allow the thermometer to be used to display indoor or outdoor temperature. Please read this manual in it's entirety to fully enjoy the benefits and features of this product. Please keep this manual for future reference.

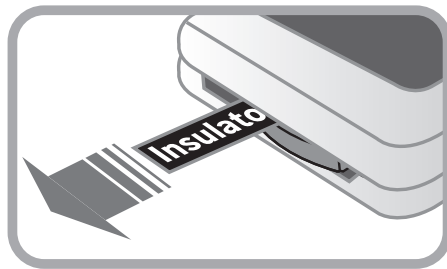
NOTE: A film is applied to the LCD at the factory that must be removed prior to using this product. Locate the tab on the left side of the display and simply peel to remove.

Overview



Power On

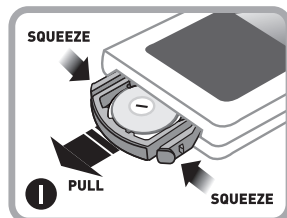
Your new Acurite window thermometer includes a button cell "CR-2032" lithium battery already installed. Remove the plastic insulator tab to activate the thermometer display.



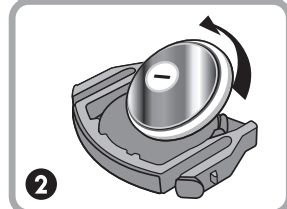
NOTE that the temperature may read higher than actual initially, due to body heat from your hands heating up the case.

Replacing the Battery

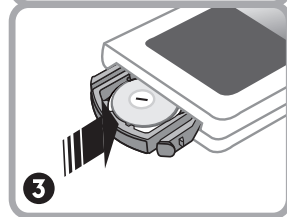
Gently squeeze the tabs and pull out the battery compartment drawer.



Remove and safely discard the old battery (see battery safety info). Insert a new "CR-2032" lithium button cell battery, paying special attention to the polarity markings.



Gently insert the battery compartment drawer back into the thermometer housing.



WARNING: THIS PRODUCT CONTAINS A BUTTON-CELL BATTERY. IF SWALLOWED, IT COULD CAUSE SEVERE INJURY OR DEATH IN JUST 2 HOURS. SEEK MEDICAL ATTENTION IMMEDIATELY IF INGESTED.



PLEASE DISPOSE OF OLD OR DEFECTIVE BATTERIES IN AN ENVIRONMENTALLY SAFE WAY AND IN ACCORDANCE WITH YOUR LOCAL LAWS AND REGULATIONS.

BATTERY SAFETY: Clean the battery contacts and also those of the device prior to battery installation. Remove batteries from equipment which is not to be used for an extended period of time. Follow the polarity (+/-) diagram in the battery compartment. Promptly remove dead batteries from the device. Dispose of used batteries properly. Only batteries of the same or equivalent type as recommended are to be used. DO NOT incinerate used batteries. DO NOT dispose of batteries in fire, as batteries may explode or leak. DO NOT mix old and new batteries or types of batteries (alkaline/standard). DO NOT use rechargeable batteries. DO NOT recharge non-rechargeable batteries. DO NOT short-circuit the supply terminals.

Choose a window that is **OUT OF DIRECT SUNLIGHT FOR THE MOST ACCURATE TEMPERATURE READING**. Find a spot on the outside of an exterior window to place the unit to observe outdoor temperature. Moisten the suction cup first and apply evenly onto the cleaned outside window surface where it can be viewed easily from inside the building.

For indoor placement, rotate the suction cup to face the back of the unit and place on a suitable, smooth surface utilizing the suction cup.

For the best performance, clean the area where the suction cup will be adhered to with a household window cleaner.

Occasionally, suction cups will not adhere well in very cold temperatures, it may be necessary to occasionally re-apply the suction cup to the surface.

USE

MIN/MAX readings will reset every 24 hours. This reset timer is started on power on (removal of clear insulator strip or insertion of battery). For example, if you power on the thermometer at 4:30 PM on a Monday, the MIN/MAX readings will be reset on 4:30 PM Tuesday (24 hours later).

PRODUCT REGISTRATION

To receive product updates and information,
Log on to
www.chaneyinstrument.com

Product Facts

Battery: 1 x "CR-2032" (included)

Measurement Ranges

Temperature: -4°F to 158°F

MADE IN CHINA
HECHO EN CHINA
Limited One
Year Warranty
Instructions &
Warranty Enclosed

Customer Care:
877-221-1252

www.chaneyinstrument.com

Free Manuals Download Website

<http://myh66.com>

<http://usermanuals.us>

<http://www.somanuals.com>

<http://www.4manuals.cc>

<http://www.manual-lib.com>

<http://www.404manual.com>

<http://www.luxmanual.com>

<http://aubethermostatmanual.com>

Golf course search by state

<http://golfingnear.com>

Email search by domain

<http://emailbydomain.com>

Auto manuals search

<http://auto.somanuals.com>

TV manuals search

<http://tv.somanuals.com>