

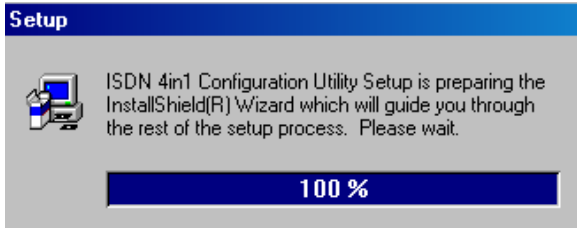
# **Mobile Access 2000 (MA2000) Intelligent Multi-function PC Card**

## **User guide**

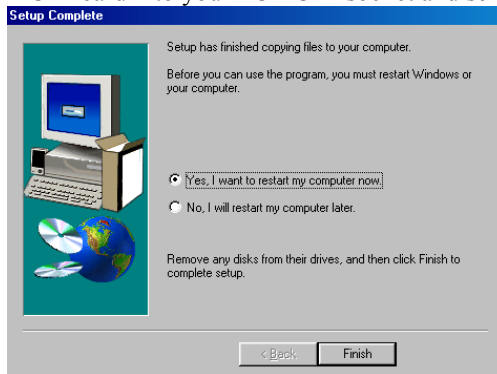
# INSTALLATION

## Installing the Device Driver

1. Insert the device driver compact disc onto your computer.
2. Double-click the drive whichever contains the device driver.
3. Double-click **Setup.exe**. The installation program will proceed automatically. Follow the on-screen instruction to continue.

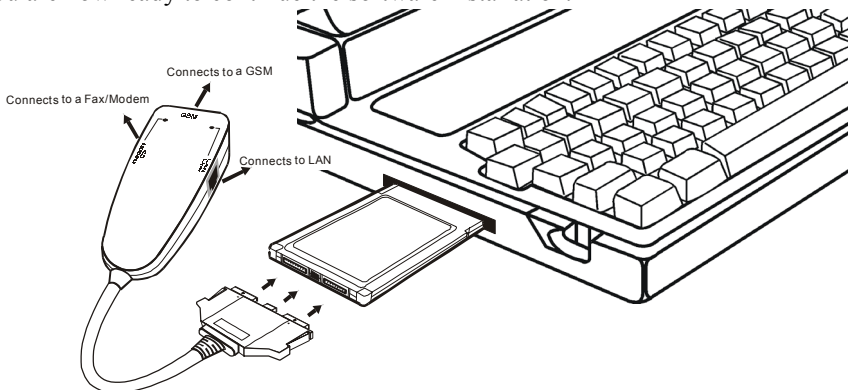


4. When finished, you will be asked to restart your computer. Before your computer is reset, insert the PCMCIA card into your PCMCIA socket and select **YES** to continue.



## Hardware Installation

1. Locate the PCMCIA slot of your system.
2. Align the MA2000 PC Card toward the PCMCIA slot. Push evenly and steadily until it is seated.
3. You are now ready to continue the software installation.

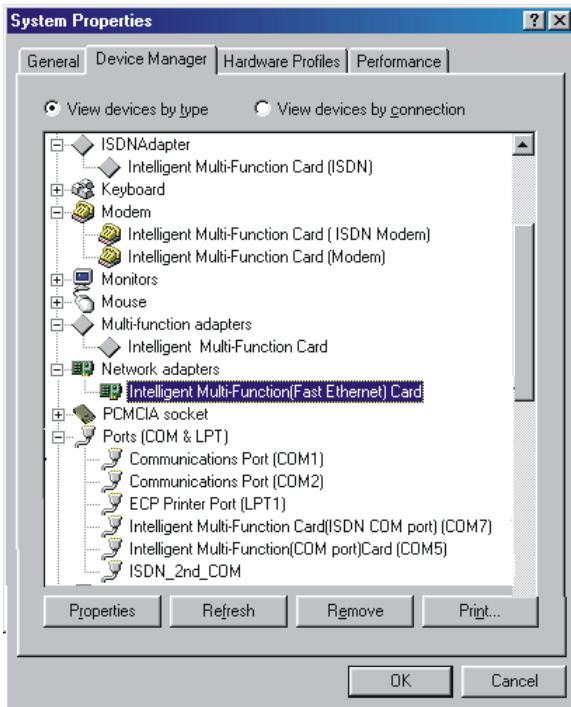


## SOFTWARE INSTALLATION FOR WINDOWS 95/98

1. Once your computer is restarted, Windows will automatically detect the new device and prompt the following message. Click **Next** to continue.



2. The installation will proceed automatically.
3. When finished, you may go to **My Computer**, right-click mouse, select **Properties**→**Device Manager** to check if all the drivers have been installed successfully.



## Free Manuals Download Website

<http://myh66.com>

<http://usermanuals.us>

<http://www.somanuals.com>

<http://www.4manuals.cc>

<http://www.manual-lib.com>

<http://www.404manual.com>

<http://www.luxmanual.com>

<http://aubethermostatmanual.com>

Golf course search by state

<http://golfingnear.com>

Email search by domain

<http://emailbydomain.com>

Auto manuals search

<http://auto.somanuals.com>

TV manuals search

<http://tv.somanuals.com>