

BELKIN.
n52te™
User Manual

P75561 F8GFPC200



TABLE OF CONTENTS

Table of Contents	SECTIONS	1	2	3	4	5	6	7	8
Introduction		1							
Features		1							
System Requirements		1							
Package Contents		1							
Getting Started		2							
Driver Installation		2							
Installation Verification		2							
Configuring the n52te		3							
The n52te Editor		3							
n52te Editor Interface		4							
Profiles		4							
Single-Key Assignments		5							
Multi-Key Assignments: Macros		6							
Creating and Assigning a Macro		9							
Using the n52te		10							
Keymaps		10							
Profile Management		10							
Profile Selection and Razer Synapse		11							
Importing and Exporting Profiles		12							
Using the n52te as a Default HID Device		12							
Help		13							
Latest n52te Driver Software		13							
Ergonomic Adjustments		14							
D-Pad Thumb-Stick		14							
Palm Rest		14							
Firmware Updates									15
Update Instructions									15
Information									16

INTRODUCTION

Thank you for purchasing the Belkin n52 Tournament Edition (n52te) SpeedPad, the only purpose-built hybrid gaming tool you need to dominate any game. Whether your passion is rooted in FPS, MMORPG, or RTS, the n52te will give you the winning edge! The n52te is designed to work out of the box as a standard Human Interface Device (HID) keyboard. Please install and use the n52te Editor and driver package for advanced programmability and portability.

Features

- 15 programmable rapid-response buttons
- Programmable 3-way scroll wheel
- Button and scroll-wheel backlighting
- Programmable 8-way direction-pad (d-pad) with removable joystick
- Adjustable soft-touch handrest
- Razer Synapse™ onboard memory

System Requirements

- Windows® XP/XP 64-bit or Windows Vista®/Vista 64-bit
- Mac OS® X v10.2.8 or higher
- A free USB port
- CD or DVD drive
- 35MB free hard-disk space
- DirectX® Compatible Video Card

Package Contents

- Belkin n52te
- Quick Start Guide
- n52te Editor Programming Software, Powered by Razer

GETTING STARTED

Driver Installation

1. Insert the n52te Installation CD into your PC's CD/DVD drive.
2. Driver installation will begin shortly. If it does not, click the "Start" button and choose "Run". Click "Browse" and choose your CD drive. Select "setup.exe" and click "OK".
3. Follow the on-screen instructions to continue with the driver installation.
4. After the installation is complete, click "Finish" and reboot when prompted.
5. After your PC boots up, connect the n52te to an available USB port on your computer.
6. Please allow Windows to detect and fully initialize the n52te. Do not disconnect or reboot/shut down your system during this process.
7. Once driver initialization has finished, please reboot your system when prompted to do so by the installer.

Installation Verification

1. To check if installation was successful, right-click on "My Computer" and left-click on "Properties". Then left-click on "Hardware" and then on the "Device Manager" button.
2. Check to make sure that the Device Manager list includes:
 - a. A new entry under Human Interface Devices, "n52te".
 - b. A new entry under Human Interface Devices, "Virtual HID Device".

CONFIGURING THE n52te

The n52te Editor

The n52te Editor is the main programming and management tool for your n52te. The n52te Editor allows you to customize the n52te to provide you with the best gaming experience possible. Examples of programmable functions are:

Single Key – Assign a single keyboard key to an n52te button.

Macros – Record a sequence of keyboard keystrokes, and/or mouse-button presses that can be saved and played back by the n52te at a later time.

Keymap Selector – Switch between the three color Keymaps (Blue, Green, Red) and effectively triple the number of functions you can program in a single profile. The default Keymap is Blue.

Mouse – Program n52te to emulate mouse clicks or scroll-wheel functions.

Polling Rate – Sets the polling rate to: 125Hz, 500Hz, or 1000Hz.

Tip: You need to reduce the polling rate if your computer does not support USB 2.0.

Razer Synapse – Store one of your profiles in the onboard memory to take it with you. The custom profile stored in the Synapse onboard memory will be available on any PC or Mac computer, even without the n52te driver or Editor application installed!

Tip: You will still need the driver and Editor software installed on the host system if you want to make any changes to the stored profile.

CONFIGURING THE n52te

Table of Contents	SECTIONS	1	2	3	4	5	6	7	8
-------------------	----------	---	---	---	---	---	---	---	---

n52te Editor Interface

This is the user interface for the n52te Editor application.



The main screen consists of:

View of the Device – Displays which keys you are programming.

Macro Editor – Allows you to define and edit sequences of keyboard keystrokes, and/or mouse-button presses to generate your own custom macros.

Profile Selection – Allows you to select and load pre-saved customizations to your n52te. For more profile management information, please see the “Profile Management” section of this manual.

Help – Displays the Help guide for the n52te Editor.

Profiles

Profiles are customized button mappings and programmable functions for a specific application that can be saved and loaded to the n52te.

This section will walk you through typical profile-creation steps using the n52te Editor. In general, creating a profile consists of mapping button functions, recording and assigning macros, configuring Auto-Switching options, and saving those customizations as a profile.

CONFIGURING THE n52te

Table of Contents

SECTIONS

1

2

3

4

5

6

7

8

Single-Key Assignments

Any n52te button, d-pad directions, and scroll-wheel directions can be programmed to emulate any key on a typical computer keyboard.



1. For the n52te button you wish to configure, left-click to bring up a menu of programmable functions.
2. Selecting “Single Key” from the menu will bring up the “Single Key” assignment dialog box. This screen is used to assign a single keyboard key to that n52te button.
3. At this point, press the desired keyboard key. The screen will display the name of the key you just pressed.
4. Click “OK” if you are happy with the current assignment. Pushing that button will now output the key with which it was just programmed.

Multi-Key Assignments: Macros

Macros are recorded sequences of keyboard keystrokes and/or mouse-button presses that can be saved and played back by the n52te at a later time.

The Macro Editor pane allows you to create, edit, and save macros. Saved macros can then be assigned to any n52te button across the three available Keymaps and can be used in any profile.

Macro Sequence List (Current Macro Assignment) – This is the sequence of keystrokes, delays, and other functions that are played back when the macro is executed. As you record a macro, the keystrokes that you type, along with delays between each sequence of events, will be listed in the “Current Macro Assignment” window.

Tip: You cannot record mouse-click commands during the recording phase, but you can add them manually after the recording phase by selecting from the mouse figure.

Macro Name:
CoD4

New Open Save Save As Delete

Current Macro Assignment

- N Press 100 ms
- N Release 650 ms
- (5) Press 100 ms
- (5) Release 600 ms
- (2) Press 50 ms
- (2) Release

Record
Stop
Advanced
Move Up
Move Down
Delete
Select All
Select All Delays
Insert Delay
50 ms

Ignore delays between events

Macro Behavior
Run Times: 1
Repeat while pressed
Repeat until next key is pressed
Repetition interval: 50 ms

Mouse Button

Record – Begins macro recording.

Stop – Stops macro recording.

Move Up – Move a macro event UP in the sequence list. Select the desired event with your mouse and left-click on “Move Up” until it is in the desired position.

Move Down – Move a macro event DOWN in the sequence list. Select the desired event with your mouse and left-click on “Move Down” until it is in the desired position.

Select All – Selects all events in the “Current Macro Assignment” sequence list.

Select All Delays – Selects all time delays in the sequence list.

Insert Delay – Allows you to manually insert a time delay in the sequence list. Simply select the macro event you want the delay to follow, choose the desired duration from the drop-down menu, and click the “Insert Delay” button.

Ignore Delays Between Events – Toggles whether or not time delays between each macro event should be played back when the macro is executed. This feature is off by default.

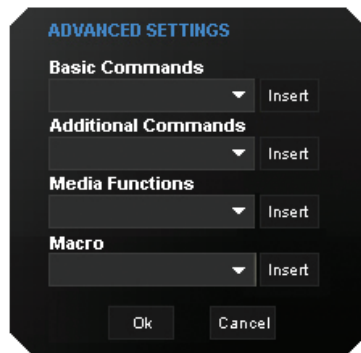
Mouse Button – Allows you add mouse-button emulation into a macro by choosing the desired button from the mouse figure.

Macro Behavior

The n52te can provide even deeper customization by allowing you to determine how you want your macros to be played back when triggered.

1. **Run Times: X** – This setting determines how many times the macro will be executed when triggered. The default is 1, meaning that the macro will play back one time when triggered.
2. **Repeat while pressed.** – This setting will force the macro to repeat continuously while the assigned button is held down.
3. **Repeat until next key is pressed.** – This setting will force the macro to repeat continuously until the next n52te button is pressed.

Advanced – This is a list of advanced macro functions that can be inserted into the macro sequence list.



Advanced functions that can be inserted into the “Current Macro Assignment” sequence list from this window include:

1. **Basic Commands** – Allows you to insert operations from a list of basic commands supported in Windows OS.
2. **Additional Commands** – Allows you to insert operations from a list of additional commands supported in Windows OS.
3. **Media Functions** – Allows you to insert operations for the default media player using a list of media commands.
4. **Macro** – Allows you to insert existing macros into the current one, thus creating a complex nested macro.

Creating and Assigning a Macro

1. Open the “Macro Editor” pane by left-clicking on the arrow on the tab.
2. Left-click on the “Record” button to start recording keyboard events.
3. Using the keyboard, type in the key-press combination of the macro you want to create. This will normally be linking spells to create a new combo, or phrases such as “cover me” you would send to your teammate. Notice that the keys you press and release are recorded in the “Current Macro Assignment” sequence list.
4. Left-click on the “Stop” button to stop macro recording.
5. Click “Save” to save your newly created macro.
6. Optionally, you can click on the “Advanced” button to display a list of Advanced Options, which you can insert into the macro.
7. If you are done editing your macro, return to the main n52te Editor screen.
8. Left-click on a desired button to open its context menu.
9. You will see your new macro listed in the menu; left-click on it to assign it.

Keymaps

The n52te Editor allows you to program three Keymaps: Blue, Red, and Green. A Keymap allows you to add another layer of programming to each button. In order to switch between Keymaps during play, you must either dedicate a button for switching to the desired Keymap, or dedicate one to cycle through all three Keymaps. Because the second option of cycling through Keymaps requires only one button, two extra buttons are free for further customization.

Note: Buttons that are selected for one of these Keymap switching options will be dedicated to this function across all three Keymaps in the current profile.

- To program a Keymap-switching function to a button, left-click on the desired button and select Blue, Red, or Green, or “Cycle Keymaps”. For Blue, Red, and Green, you can select either “Momentary” or “Toggle”.
- If you select “Momentary”, the n52te will only load the desired Keymap while you hold that button down. If you select “Toggle”, the button acts like a switch and n52te will remain in the desired Keymap until another Keymap is selected.
- You can view and edit different Keymaps by clicking on Blue, Red, or Green labels above the device-view graphic located at the main n52te Editor screen.
- Please make sure to save your work.

Profile Management

Using the n52te with multiple applications has never been easier. You can manage profiles by using the following buttons on the main Editor Window.

New – Creates a new profile with default name “Untitled Profile 0x”. Thereafter, you can specify a name for the profile.

Save – Saves all changes to the current profile.

Save As – Saves all changes to the current profile under a user-defined filename.

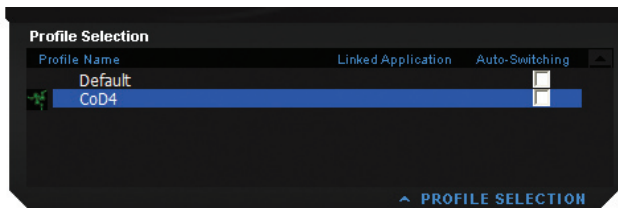
Import – Allows you to import a shared or downloaded profile into the n52te Editor and default profile folder.

Apply Changes – Activates recent changes made with the n52te Editor. This is different than saving in that the changes are made usable, but your profile is not overwritten. This is useful for testing out new programmable functions or macros without permanently changing existing profiles.

Reset Keymap – Resets all key assignments in the current Keymap to their default settings. Note that they are not active until saving or pressing the “Apply Changes” button.

Profile Selection and Razer Synapse™

The “Profile Selection” pane displays the entire library of custom profiles located on your PC.



To change the currently active profile, click the “Profile Selection” tab to open the pane and choose the desired profile from the list.

Linked Application – Displays which application executable the profile is currently linked to. Launching the linked application will trigger the n52te Editor to switch to that profile automatically.

Auto-Switching – Allows you to enable or disable profile Auto-Switching when the linked application is launched. To enable or disable, click the Auto-Switching check box next to the desired profile. An “x” indicates that Auto-Switching is enabled.

Tip: In order for Auto-Switching to function, the profile must already be linked to an application executable.

Right-Click Menu – Right-click on the desired profile to bring up a menu of additional profile management options.

Delete Profile: Selecting this will delete the highlighted profile from your system.

Rename Profile: Selecting this will allow you to give the highlighted profile a new name (make sure to save any changes before closing out of the n52te Editor).

Link Application: Selecting this will link the highlighted profile to an application executable. Simply browse to the desired “.exe” file and click “Open”.

Load to Synapse™: Selecting this will load the highlighted profile to the Synapse onboard memory. This functions the same as the “Apply Changes” button on the main n52te Editor screen.

The n52te is powered by Razer Synapse™. This allows you to save one of your profiles to the n52te’s onboard memory and use it on another PC, even without installing the n52te Editor software.

To load a profile to the n52te’s onboard memory powered by Razer Synapse, open the “Profile Selection” pane and double-click on the desired profile. The profile will be loaded when the Synapse icon appears next to the name. Now you can take your custom n52te settings with you anywhere.

Importing and Exporting Profiles

With the n52te Editor, it is easy to import custom user-made profiles and upload yours to share with others.

To import a newly acquired profile, simply drag and drop the file into the "Profile Selection" pane to add the profile to your library for immediate use.

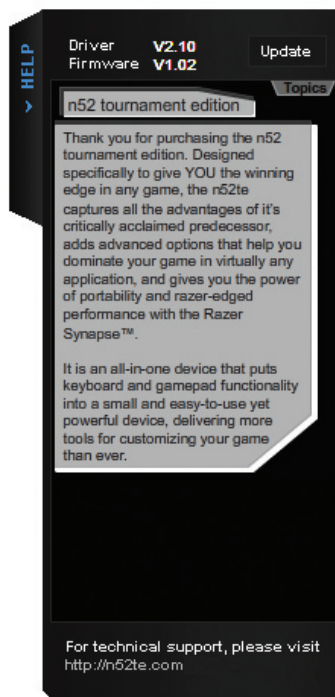
To export your custom profile(s), drag the desired profile from the "Profile Selection" pane to any location on your system.

Using the n52te as a Default HID Device

If you choose not to install the software or create custom profiles, then by default your n52te will use the following functions:

- | | | |
|---------|-----------|---|
| 1. Tab | 8. S | 15. SPACE BAR |
| 2. Q | 9. D | 16. ALT |
| 3. W | 10. F | D-pad. Keyboard arrow keys. |
| 4. E | 11. SHIFT | Scroll Wheel. Standard 3-way scroll wheel. |
| 5. R | 12. Z | |
| 6. CAPS | 13. X | |
| 7. A | 14. C | |

This default configuration works well with the default keyboard setup of most first-person shooter games.



If you have any problems using the n52te, simply click the “Help” tab to access the help file for usage and configuration tips.

Latest n52te Driver Software

To update the n52te Editor software, simply click on the “Update” button to be taken to the latest driver software and firmware on www.n52te.com.

ERGONOMIC ADJUSTMENTS

D-Pad Thumb-Stick

The n52te comes equipped with a removable thumb-stick for enhanced movement control when using the 8-way D-pad. Simply pull the thumb-stick up away from the D-pad to remove it if preferred.

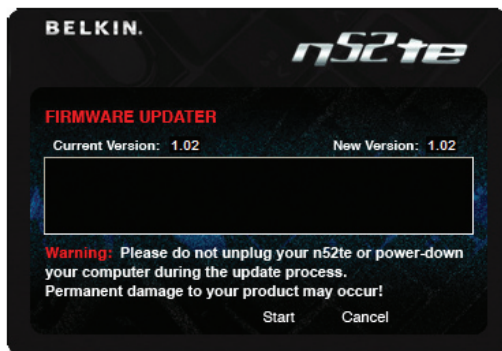
Palm Rest

The n52te is designed to adapt to hands of different sizes. There are three different hand-size adjustments that can be made to the palm rest in order to help you easily reach all of the n52te's buttons and keys.

1. *For average-sized hands*, no adjustment is necessary. The n52te's palm rest comes configured for the average-sized hand.
2. *For larger hands*, you can easily increase the distance between the palm rest and the main keys. Simply pull the palm rest straight up away from the n52te's main chassis until it pops free. On the chassis you will see two sets of holes. Reinsert the palm rest into the holes farthest from the main keys and snap it down firmly.

For smaller hands, you can simply remove the palm rest completely for easier access to the n52te's array of buttons and keys.

To ensure you have the absolute best and most complete user experience, we suggest that you keep your n52te firmware up to date as often as possible. To check for the latest driver and firmware updates, please go to www.n52te.com.



Update Instructions

Caution: Please read and follow these steps carefully to avoid losing your custom configurations and risking permanent damage to your n52te!

1. Make sure the n52te is disconnected from your PC.
2. The firmware updater will not function without the n52te drivers installed. If you have not installed the n52te drivers, please do so **BEFORE** updating the n52te firmware.
3. After driver installation has finished, make sure to reboot your PC when prompted. (Important: Your n52te will be reset to its factory default settings. Any custom configuration currently loaded in the onboard memory will be erased during the firmware update process. Make sure your custom configurations are backed up as profiles before updating the firmware.)
4. Connect your n52te. Please allow some time for Windows to recognize and initialize the n52te.
5. Run the n52te firmware updater and click "OK" to begin the update process. (Important: To avoid permanent damage to your n52te, make sure **NOT** to disconnect or interrupt power during the update process.)
6. When the update process has finished, disconnect and then reconnect your n52te, only when prompted to do so by the firmware updater.
7. If the update process fails, disconnect the n52te and reboot your PC. Then try updating again from a different USB port, preferably one that is physically located on the PC or Mac computer.

INFORMATION

FCC Statement

DECLARATION OF CONFORMITY WITH FCC RULES FOR ELECTROMAGNETIC COMPATIBILITY

We, Belkin International, Inc., of 501 West Walnut Street, Compton, CA 90220, declare under our sole responsibility that the product:

F8GFPC200

to which this declaration relates:

Complies with Part 15 of the FCC Rules. Operation is subject to the following two conditions: (1) this device may not cause harmful interference, and (2) this device must accept any interference received, including interference that may cause undesired operation. This equipment may only be operated indoors. Operation outdoors is in violation of 47 U.S.C. 301 and could subject the operator to serious legal penalties.

CE Declaration of Conformity

We, Belkin International, Inc., declare under our sole responsibility that the F8GFPC200, to which this declaration relates, is in conformity with Generic Emissions Standard EN55022:1998 Class B, EN50081-1, and with Generic Immunity Standard EN50082-1:1992.

Belkin International, Inc., Limited Lifetime Product Warranty

What this warranty covers.

Belkin International, Inc. ("Belkin") warrants to the original purchaser of this Belkin product that the product shall be free of defects in design, assembly, material, or workmanship.

What the period of coverage is.

Belkin warrants the Belkin product for the lifetime of the product.

What will we do to correct problems?

Product Warranty.

Belkin will repair or replace, at its option, any defective product free of charge (except for shipping charges for the product). Belkin reserves the right to discontinue any of its products without notice, and disclaims any limited warranty to repair or replace any such discontinued products. In the event that Belkin is unable to repair or replace the product (for example, because it has been discontinued), Belkin will offer either a refund or a credit toward the purchase of another product from Belkin.com in an amount equal to the purchase price of the product as evidenced on the original purchase receipt as discounted by its natural use.

What is not covered by this warranty?

All above warranties are null and void if the Belkin product is not provided to Belkin for inspection upon Belkin's request at the sole expense of the purchaser, or if Belkin determines that the Belkin product has been improperly installed, altered in any way, or tampered with. The Belkin Product Warranty does not protect against acts of God such as flood, lightning, earthquake, war, vandalism, theft, normal-use wear and tear, erosion, depletion, obsolescence, abuse, damage due to low voltage disturbances (i.e. brownouts or sags), non-authorized program, or system equipment modification or alteration.

How to get service.

To get service for your Belkin product you must take the following steps:

1. Contact Belkin International, Inc., at 501 W. Walnut St., Compton CA 90220, Attn: Customer Service, or call (800)-223-5546, within 15 days of the Occurrence. Be prepared to provide the following information:
 - a. The part number of the Belkin product.
 - b. Where you purchased the product.
 - c. When you purchased the product.
 - d. Copy of original receipt.
2. Your Belkin Customer Service Representative will then instruct you on how to forward your receipt and Belkin product and how to proceed with your claim.

Belkin reserves the right to review the damaged Belkin product. All costs of shipping the Belkin product to Belkin for inspection shall be borne solely by the purchaser. If Belkin determines, in its sole discretion, that it is impractical to ship the damaged equipment to Belkin, Belkin may designate, in its sole discretion, an equipment repair facility to inspect and estimate the cost to repair such equipment. The cost, if any, of shipping the equipment to and from such repair facility and of such estimate shall be borne solely by the purchaser. Damaged equipment must remain available for inspection until the claim is finalized. Whenever claims are settled, Belkin reserves the right to be subrogated under any existing insurance policies the purchaser may have.

How state law relates to the warranty.

THIS WARRANTY CONTAINS THE SOLE WARRANTY OF BELKIN. THERE ARE NO OTHER WARRANTIES, EXPRESSED OR, EXCEPT AS REQUIRED BY LAW, IMPLIED, INCLUDING THE IMPLIED WARRANTY OR CONDITION OF QUALITY, MERCHANTABILITY OR FITNESS FOR A PARTICULAR PURPOSE, AND SUCH IMPLIED WARRANTIES, IF ANY, ARE LIMITED IN DURATION TO THE TERM OF THIS WARRANTY.

Some states do not allow limitations on how long an implied warranty lasts, so the above limitations may not apply to you.

IN NO EVENT SHALL BELKIN BE LIABLE FOR INCIDENTAL, SPECIAL, DIRECT, INDIRECT, CONSEQUENTIAL OR MULTIPLE DAMAGES SUCH AS, BUT NOT LIMITED TO, LOST BUSINESS OR PROFITS ARISING OUT OF THE SALE OR USE OF ANY BELKIN PRODUCT, EVEN IF ADVISED OF THE POSSIBILITY OF SUCH DAMAGES.

This warranty gives you specific legal rights, and you may also have other rights, which may vary from state to state. Some states do not allow the exclusion or limitation of incidental, consequential, or other damages, so the above limitations may not apply to you.

BELKIN®

Belkin Tech Support
US: 800-223-5546, ext. 2263
310-898-1100, ext. 2263
UK: 0845 607 77 87
Australia: 1800 235 546
New Zealand: 0800 235 546
Singapore: 65 64857620
Europe: www.belkin.com/support

Belkin International, Inc.
501 West Walnut Street
Los Angeles, CA 90220, USA
310-898-1100
310-898-1111 fax

Belkin Ltd.
Express Business Park, Shipton Way
Rushden, NN10 6GL,
United Kingdom
+44 (0) 1933 35 2000
+44 (0) 1933 31 2000 fax

Belkin B.V.
Boeing Avenue 333
1119 PH Schiphol-Rijk,
The Netherlands
+31 (0) 20 654 7300
+31 (0) 20 654 7349 fax

Belkin Ltd.
4 Pioneer Avenue
Tuggerah Business Park
Tuggerah, NSW 2259, Australia
+61 (0) 2 4350 4600
+61 (0) 2 4350 4700 fax

© 2008 Belkin International, Inc. All rights reserved. All trade names are registered trademarks of respective manufacturers listed. Windows and Windows Vista are either registered trademarks or trademarks of Microsoft Corporation in the United States and/or other countries. Mac and Mac OS are trademarks of Apple Inc., registered in the U.S. and other countries.

Free Manuals Download Website

<http://myh66.com>

<http://usermanuals.us>

<http://www.somanuals.com>

<http://www.4manuals.cc>

<http://www.manual-lib.com>

<http://www.404manual.com>

<http://www.luxmanual.com>

<http://aubethermostatmanual.com>

Golf course search by state

<http://golfingnear.com>

Email search by domain

<http://emailbydomain.com>

Auto manuals search

<http://auto.somanuals.com>

TV manuals search

<http://tv.somanuals.com>