

It's as easy as 1-2-3

1 Hardware Connections:
Use the instructions in this Guide to connect your Modem to your computer.

2 Configuring your Modem:
Configure your Belkin Modem with the easy-to-use Web Based Setup Utility

3 Connecting to the Internet

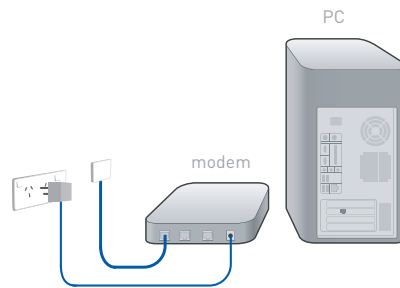
Thankyou for purchasing a Belkin Modem, you will need to run through the following steps once to set up your Modem.

① Hardware Connections

Step A

Place the modem next to the computer. Connect the Modem's power cord into the back of the Modem. Connect a telephone cable from the wall into the back of the Modem.

If your computer has an Ethernet (network) connection, continue with section B1. Alternatively you can install the Modem with a USB connection, continue with section B2.



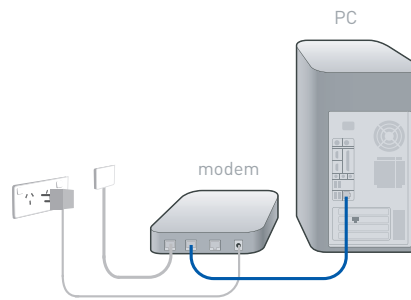
Ethernet Setup

Step B1

Find your new networking cable (it came in the box with your Modem) and connect it to the LAN port on the back of the modem.

Connect the other end to your computers LAN port.

Please continue to Step 2



USB Setup

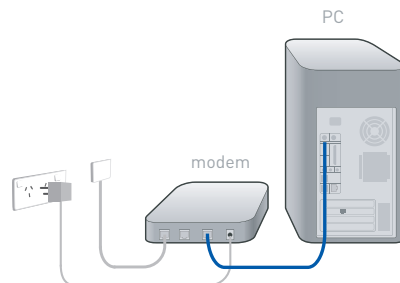
Step B2

Insert the CD into your computer.

Windows ME (or later) users: Connect the Modem to your computer with a USB cable.

Windows 98SE users: Please refer to the user manual located on the CD for further instructions.

Please continue to Step 2

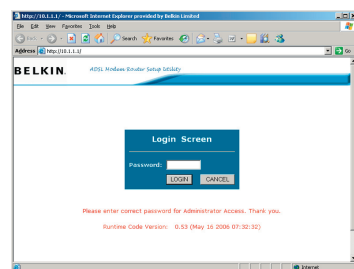


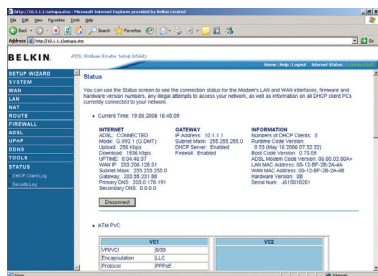
② Configuring your Modem

Step A

Open your Internet Browser (Internet Explorer, FireFox, Netscape, Safari etc) In the Address Bar, type in 10.1.1.1. You will be presented with a Login screen, type in "admin" as the password then click LOGIN

Note: The password is case sensitive.



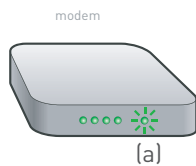


Step B

Select your country (Australia or New Zealand)

Add your current username and password. Please confirm with your Internet Service Provider for the correct username, username format & password.

Click SAVE SETTINGS



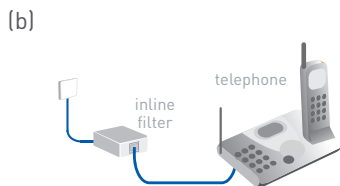
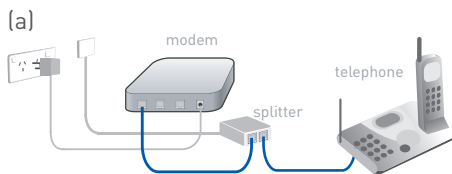
③ Connecting to the Internet

Please allow up to five minutes for the ADSL Data light (a) to illuminate. This indicates a successful connection to the Internet.

Once the ADSL Data light has illuminated, open your Web Browser and surf the web!

Note: If the ADSL Data light is solid, this indicates a connection to the Internet has been established.

If the ADSL Data light is flashing, this indicates data activity e.g. when browsing websites etc.



Connecting telephone filters

Any telephone connected to the same telephone line as your ADSL modem needs to be filtered. This allow you to use the Internet and talk on the phone at the same time.

If you have a telephone connected to same socket as the Modem, you will need a Splitter (not included) (a).

Any extra telephones that are connected to the same telephone line need an inline filter (not included) (b).

Support

Belkin provides free technical support via phone and the Web. However, we encourage you to attempt (or retry) Steps 1 and 2 before contacting Support.

If you're still having trouble, contact Belkin Support.

Web
www.belkin.com/anz
 (click on Support Centre)

Phone
 1800 BELKIN Aus
 0800 BELKIN NZ

Monday-Friday 08:00-20:00
 (Sydney time zone)
 Closed public holidays

Free Manuals Download Website

<http://myh66.com>

<http://usermanuals.us>

<http://www.somanuals.com>

<http://www.4manuals.cc>

<http://www.manual-lib.com>

<http://www.404manual.com>

<http://www.luxmanual.com>

<http://aubethermostatmanual.com>

Golf course search by state

<http://golfingnear.com>

Email search by domain

<http://emailbydomain.com>

Auto manuals search

<http://auto.somanuals.com>

TV manuals search

<http://tv.somanuals.com>