



Quick Installation Guide



TE100-MP1UN

H/W: V1.0R

Table of Contents

English	1
1. Before You Start	1
2. How to Install	2
3. Printing	7
4. Faxing	8
5. Scanner	9
Troubleshooting	10

1. Before You Start



Package Contents

- TE100-MP1UN
- Utility CD-ROM
- Multi-Language Quick Installation Guide
- Power Adapter (5V, 2A)

System Requirements

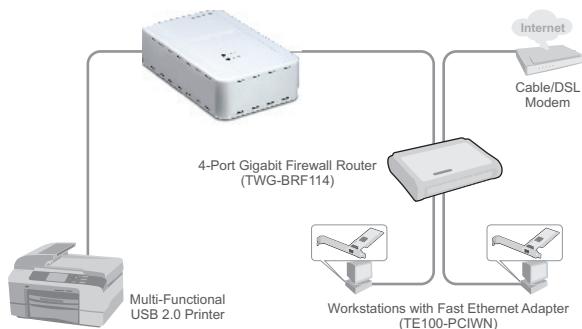
- CD-ROM Drive
- CPU: 300Mhz or above/ 800Mhz or above (Windows Vista)
- Memory: 256MB RAM or above/ 512MB RAM or above (Window Vista)
- Windows 2000/XP/2003 Server/Vista (32bit)

Note:

1. Do not perform the following unless instructed to do so:
 1. Install the utility
 2. Connect printer to Print Server
 3. Connect computer to Print Server
2. The utility must be installed on each computer in order to use your multi-function printer.

Application

1-Port Multi-Function Print Server (TE100-MP1UN)



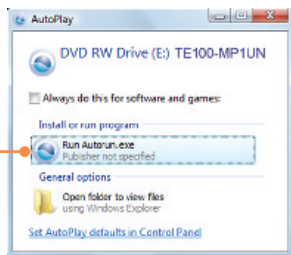
2. How to install

1. Install the printer drivers to your computer. Then power down the printer and disconnect the printer from your computer.

Note: Please refer to your printer's manual for printer installation instructions.

2. Insert the Utility CD-ROM into your CD-ROM drive.

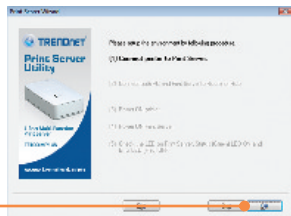
3. Click **Run Autorun.exe** (Windows Vista only).



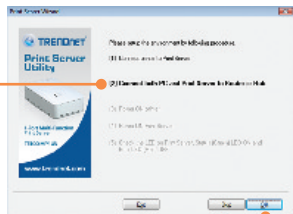
4. Click **Install Utility**. Then click **Setup Wizard**.



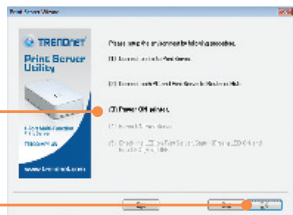
5. Connect the USB Printer to the **USB** port on the Print Server. Then click **OK**.



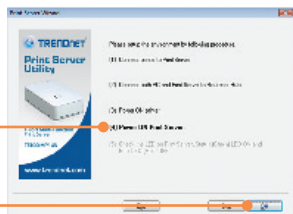
6. Connect a RJ-45 network cable from a Switch/Router to the **LAN** port of the Print Server.



7. Connect a RJ-45 network cable from a Switch/Router to the Ethernet port on your computer and then click **OK**.



8. Power ON your printer and then click **OK**.

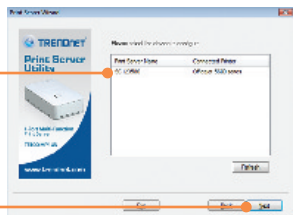


9. Connect the **AC Power Adapter** to the Print Server and then to a power outlet. Then click **OK**.



10. Verify the **Status LED** is on and the Error LED if off on the Print Server. Then click **Yes**.

11. Select the print server and then click **Next**.



12. Configure the IP address of the print server to be in the same subnet as your network and then click **Next**.



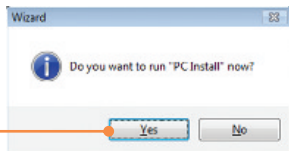
13. Copy down the IP address and then click **Next**.



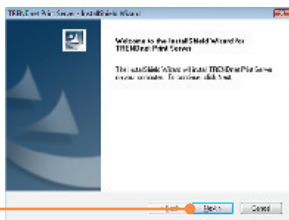
14. Click **Finish**.



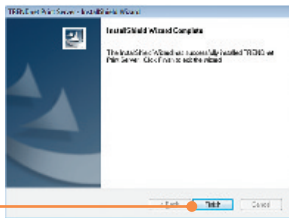
15. Click **Yes**.



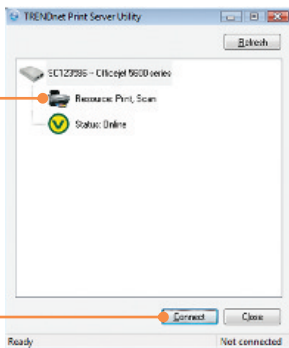
16. Click **Next** and then follow the **InstallShield Wizard** instructions.



17. Click **Finish**.

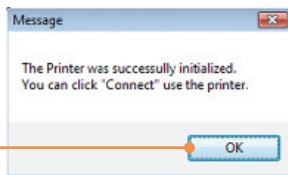


18. Click on **Resource** and then click **Connect**.



19. The printer driver wizard appears.
Follow the printer driver wizard to
install the printer.

20. Click **OK**.



Print Server configuration is now complete.

For detailed information regarding the **TE100-MP1UN** configuration and advanced settings, please refer to the User's Guide on the Utility CD-ROM or TRENDnet's website at www.trendnet.com

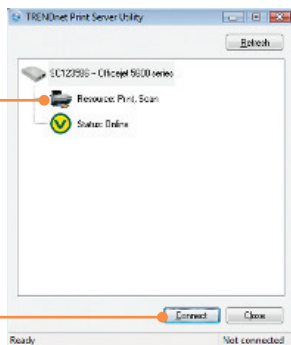
Register Your Product

To ensure the highest level of customer service and support, please take a moment to register your product Online at: www.TRENDnet.com/register
Thank you for choosing TRENDnet

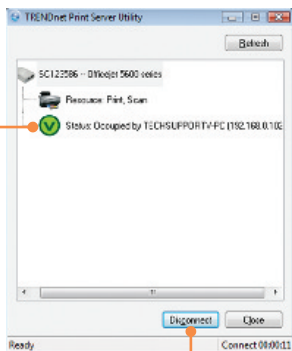
3. Printing

Note: Only one user can use the print server at a time. Once a user has finished using the print server, another user can use it.

1. Click on **Resource** and then click **Connect**.



2. Status will now show the client computer and IP address that is currently using the printer.



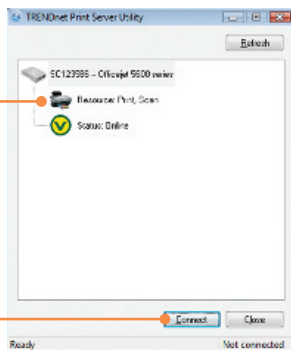
3. User can now start printing.

4. Click **Disconnect**.

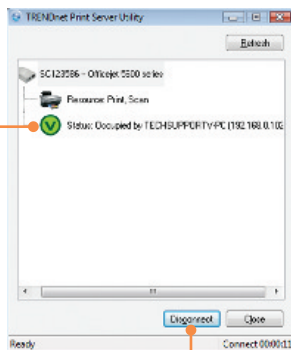
4. Faxing

Note: Only one user can use the print server at a time. Once a user has finished using the print server, another user can use it.

1. Click on **Resource** and then click **Connect**.



2. Status will now show the client computer and IP address that is currently using the printer.



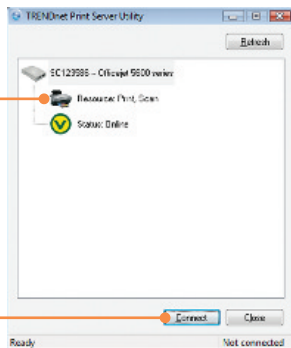
3. User can now start Faxing. Follow the Multifunction printer software instructions for faxing.

4. Click **Disconnect**.

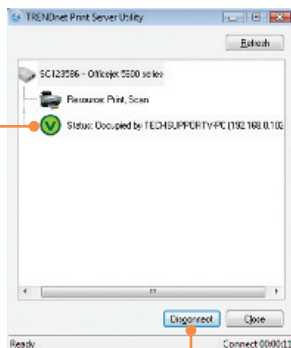
5. Scanning

Note: Only one user can use the print server at a time. Once a user has finished using the print server, another user can use it.

1. Click on **Resource** and then click **Connect**.



2. Status will now show the client computer and IP address that is currently using the printer.



3. Place the document on the Multi-Function Printer's Scanner bed. Then follow the Multifunction printer software instructions for scanning.

4. Click **Disconnect**.

Q1. I inserted the Utility CD-ROM into my computer's CD-ROM Drive but the installation menu does not appear automatically. What should I do?

A1. For Windows 2000/XP, if the window does not appear automatically, click **Start**, click **Run**, and type **D:\autorun.exe** where "D" in "D:\autorun.exe" is the letter assigned to your CD-ROM Drive, and then press the ENTER key on your keyboard. For Windows Vista, if the installation menu does not appear automatically, click **Start**, click the **Start Search** box, and type **D:\autorun.exe** where "D" in "D:\autorun.exe" is the letter assigned to your CD-ROM Drive, and then press the ENTER key on your keyboard.

Q2. The setup wizard does not detect the Print Server and/or printer/storage device. What should I do?

A2. First, double check your hardware connections; make sure that the Print Server and printer are powered ON and are properly connected. Make sure the RJ-45 network cable is securely connected to the Print Server and Switch/Router. Second, disable any software firewall programs such as ZoneAlarm or Norton Internet Security. If your computer is running Windows XP or Vista, disable the built-in firewall. Third, click **Refresh**. Fourth, power cycle the Print Server. Unplug the power to the Print Server, wait 15 seconds, then plug the Print Server back in.

Q3. The setup wizard does not detect my printer device. What should I do?

A3. First, make sure the printer is powered on and properly connected to the Print Server. Second, connect the printer with another USB cable. Third, reset the print server. Take a pin or paperclip and press the reset button on the print server for 15 seconds, then let go.

Q4. I am unable to print to my Print Server. What should I do?

A4. First, make sure you follow the exact steps for installing the Print Server in section 2. Second, make sure to right click on the print server in the utility and click connect. If another user is using the print server, you must wait until the user is finished using it. Third, if you are connected to the print server and are idled for a couple of minutes, a warning message appears. If you do not respond within a minute, you will be automatically disconnected from the print server. You must connect to the print server again.

Q5. I can print a test page, but I cannot print anything from Microsoft Word or other applications.

A5. Make sure to set the newly installed network printer as your **default** printer. Click Start and then click Printers & Faxes, verify that your printer icon has a check on it.

Q6. I configured my Print Server to automatically receive an IP Address from a DHCP server, and now I cannot go into the Print Server's web utility.

A6. Open the print server setup wizard (See 1. How to install) to locate your Print Server's IP Address.

Q7. Is there a way to force a computer to give up ownership to the print server?

A7. If the user has been idled for 5 minutes, the user will be automatically disconnected. You can also force a computer to give up ownership by unplugging the power to the print server and plug the power back in.

If you still encounter problems or have any questions regarding the **TE100-MP1UN**, please refer to the User's Guide included on the Utility CD-ROM or contact TRENDnet's Technical Support Department.

Certifications

This equipment has been tested and found to comply with FCC and CE Rules. Operation is subject to the following two conditions:

- (1) This device may not cause harmful interference.
- (2) This device must accept any interference received. Including interference that may cause undesired operation.



Waste electrical and electronic products must not be disposed of with household waste. Please recycle where facilities exist. Check with you Local Authority or Retailer for recycling advice.



NOTE: THE MANUFACTURER IS NOT RESPONSIBLE FOR ANY RADIO OR TV INTERFERENCE CAUSED BY UNAUTHORIZED MODIFICATIONS TO THIS EQUIPMENT. SUCH MODIFICATIONS COULD VOID THE USER'S AUTHORITY TO OPERATE THE EQUIPMENT.

ADVERTENCIA

En todos nuestros equipos se mencionan claramente las características del adaptador de alimentación necesario para su funcionamiento. El uso de un adaptador distinto al mencionado puede producir daños físicos y/o daños al equipo conectado. El adaptador de alimentación debe operar con voltaje y frecuencia de la energía eléctrica domiciliar existente en el país o zona de instalación.



TRENDnet[®]

Product Warranty Registration

Please take a moment to register your product online.
Go to TRENDnet's website at <http://www.trendnet.com/register>

TRENDnet[®]

20675 Manhattan Place
Torrance, CA 90501
USA

Free Manuals Download Website

<http://myh66.com>

<http://usermanuals.us>

<http://www.somanuals.com>

<http://www.4manuals.cc>

<http://www.manual-lib.com>

<http://www.404manual.com>

<http://www.luxmanual.com>

<http://aubethermostatmanual.com>

Golf course search by state

<http://golfingnear.com>

Email search by domain

<http://emailbydomain.com>

Auto manuals search

<http://auto.somanuals.com>

TV manuals search

<http://tv.somanuals.com>