

Quick Connection Guide Using One Touch Dial

For details on operations, refer to the Operating Instructions.

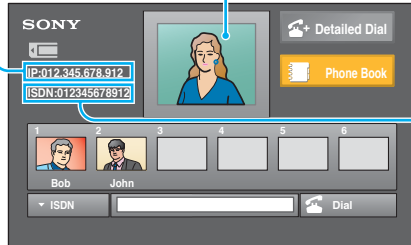
To begin with

Turn on your Video Communication System, and check the following to ensure that connection is possible.

When using the LAN

Is the IP address displayed?

Note: Connection to a remote party is impossible if neither the IP address nor ISDN telephone number is displayed.



Is the picture of your camera (local picture) on the display?

When using the ISDN

Is the ISDN telephone number displayed?

Main indicators that appear during communication

| | |
|--|---|
| | Controlling a remote camera |
| | Local microphone is cut off |
| | Sending a still image |
| | Receiving a still image |
| | Sending or receiving an image of a computer |
| | Receiving data of a whiteboard |

After checking...

Let's connect

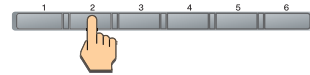
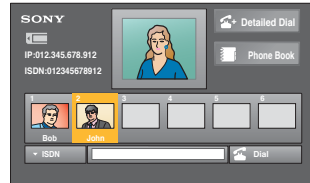
One Touch Dial buttons



↑/↓/←/→ (arrow) buttons

When six or less One Touch Dials are registered

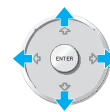
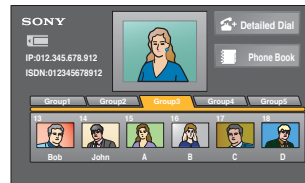
Press One Touch Dial button 1 to 6 to select the remote party.



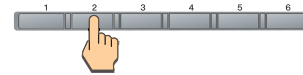
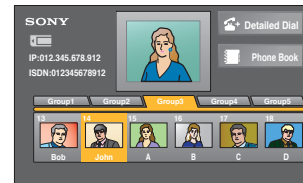
Press.

When seven or more One Touch Dials are registered

- 1 Press the ↑, ↓, ← or → button to select the group.
- 2 Press One Touch Dial button 1 to 6 to select the remote party.



Select a group.



Press.

The system dials automatically, and establishes communication.



If the remote party is not registered for One Touch Dial
Call a remote party manually, referring to the Operation Guide.
If communication cannot be established after a number of trials
The line registered for One Touch Dial may not be used. Consult your system administrator.

Remote Control Guide: Operations available during communication

For details on operations, refer to the Operating Instructions.

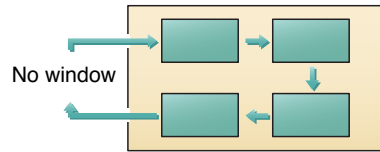
Ending the conference



Changing the location of the window picture

Each press of PinP changes the location of the window.

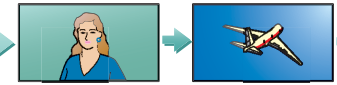
Display



Note: The PinP feature is available during communication only.

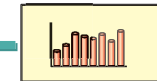
Switching the picture on the display

Each press of VIDEO CONF switches the picture.



Picture of the local or remote camera

Still image transmitted or received



DSB picture or picture received from a whiteboard

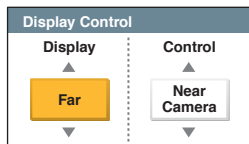
Note: You can switch among the available pictures only.

Presetting the camera angle

Press button 1 to 6 quickly to move the camera to the preset position. Hold down button 1 to 6 to preset the current camera position.

Note: If you press button 1 to 6 quickly when there is no preset setting, the camera moves to the center position.

Selecting the displayed picture and the camera

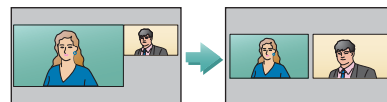


Display: Select the "Near" or "Far" picture to be displayed on the display.

Control: Select the "Near Camera" or "Far Camera" to be controlled.

Monitoring the local and remote pictures simultaneously

Press PandP once to enter the PandP mode, and press it again to change the sizes of the pictures.

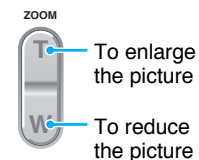


Note: The PandP feature is available during communication only.

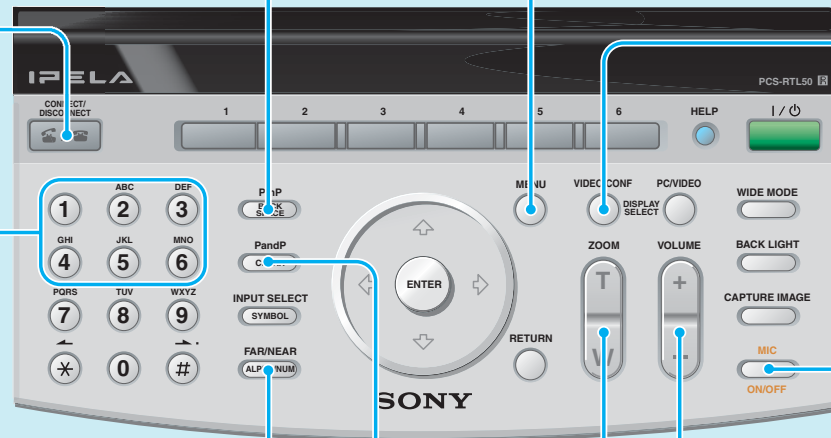
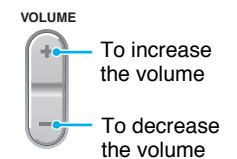
Displaying the menu available during communication

Switching on/off the local microphone

Adjusting the camera zoom



Adjusting the sound of the remote party



Free Manuals Download Website

<http://myh66.com>

<http://usermanuals.us>

<http://www.somanuals.com>

<http://www.4manuals.cc>

<http://www.manual-lib.com>

<http://www.404manual.com>

<http://www.luxmanual.com>

<http://aubethermostatmanual.com>

Golf course search by state

<http://golfingnear.com>

Email search by domain

<http://emailbydomain.com>

Auto manuals search

<http://auto.somanuals.com>

TV manuals search

<http://tv.somanuals.com>