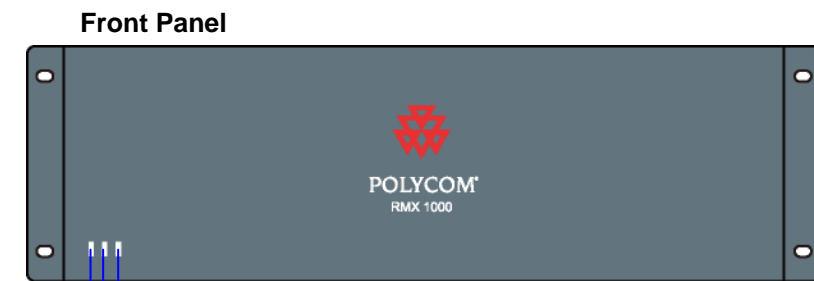


Installation Quick Start Guide for RMX 1000

Basic Setup



Before installing the RMX 1000 and performing the basic setup, please read the General Safety Precautions described in the *Polycom RMX 1000 Getting Started Guide*.



Power Status LED LAN1&LAN 2 Status LEDs



Power Cable Off/On Switch LAN1 Connection



If you want to shut off the device, please first turn off the power switch. Do not directly cut off the power supply or unplug the power cable.

First-Time Power-up and Connection to RMX 1000

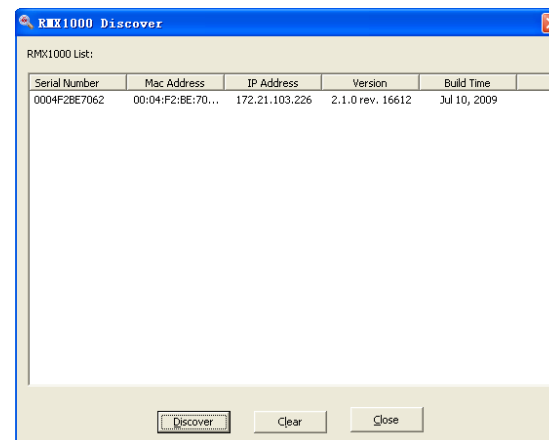
- 1 Connect your PC to the LAN1 port (the LAN1 port is enabled by default) of the RMX 1000, or connect your PC and RMX 1000 to the same switch in the LAN.
- 2 Turn on the power switch at the RMX 1000.
- 3 Configure the IP address for your PC, which is in the same network segment as the IP address of the RMX 1000.

The default IP address of the RMX 1000 is:

- IP address - **192.168.1.254**
- Subnet mask - **255.255.255.0**
- Default gateway IP address - **192.168.1.1**

You can also view the current address information of the product using the RMX 1000 Discover tool:

- a Run the RMX 1000Discover.exe tool located in the CD provided with the product. You can also get it from the Polycom Web site (Link to Support -> Network -> RMX 1000).
- b Click **Discover**.



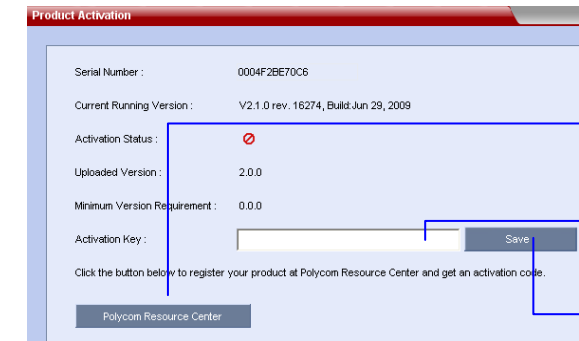
- 4 Run the Web browser on the PC. Enter **http://<RMX 1000 IP address>** in the address bar, and then press **Enter**.



- Enter POLYCOM
- Enter POLYCOM
- Click **Login**

5

- 6 The *Product Activation* dialog box displays automatically.



Click **Polycom Resource Center** to connect to Polycom web site (<http://portal.polycom.com>) and register your system. Follow the on screen instructions to obtain the Product Activation Key.

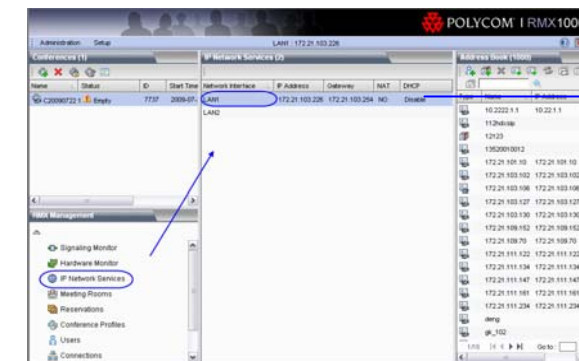
Enter or paste the Product Activation Key obtained.

Click **Save**

- 7 The system will display a message asking whether to restart the system or not. Click **Restart Now** to validate the activation.

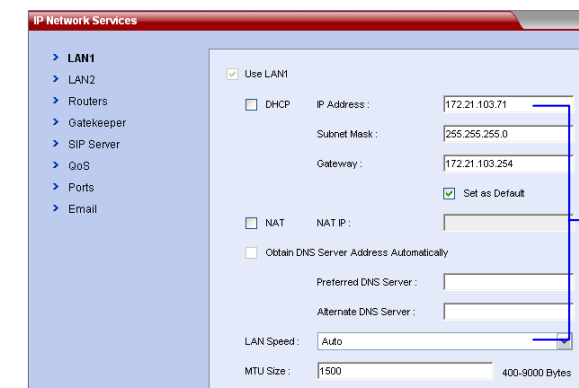
Modifying the Default IP Address of RMX 1000

After the system restarts, you can enter the RMX 1000 Web configuration interface to modify the default IP address for the system based on the settings of your local network.



Click **IP Network Services**, then double click **LAN 1** item.

1



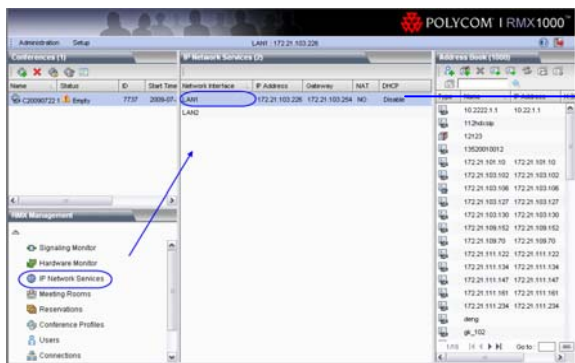
Set the IP parameters using the information supplied by your network administrator:

- IP address, subnet mask and gateway
- Select **Set as Default** if you want to set the gateway as the default route
- NAT IP (Optional)
- DNS server IP address (Optional)
- The speed/duplex modes for LAN1 port (Default Auto)

2

Configuring Other Network Options (Optional)

If necessary, you can configure other network parameters according to the following procedure:



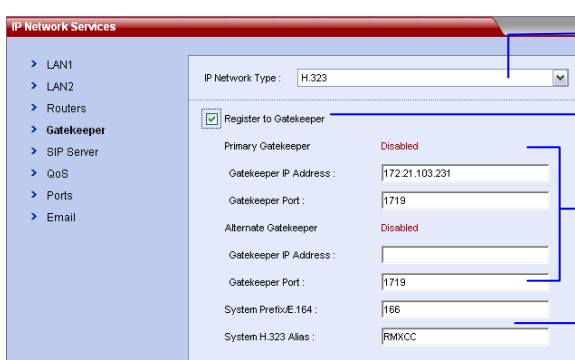
Click IP Network Services, then double click LAN 1 item.

- 1
- 2 Click the **Routers** tab.



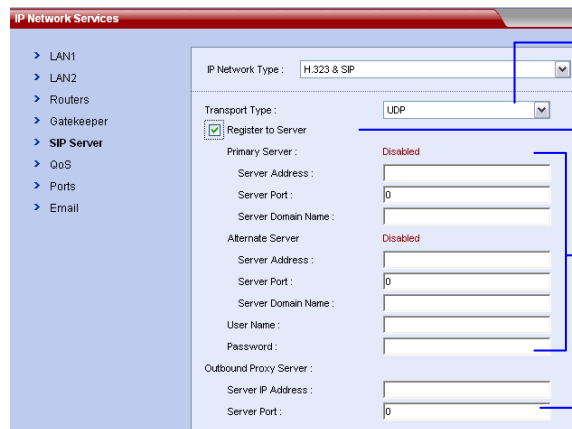
Set the IP address for the sending router of packet transmission
Set the target network address for packet transmission
Set the subnet mask for the target network

- 3
- 4 If your IP network type is SIP only, go to step 8.
- 5 To register the system to the gatekeeper, click the **Gatekeeper** tab.



Choose an IP network type for the RMX 1000 system to make a call
Check the option to register to GK and set the following parameters
Set the Primary / Alternate Gatekeeper parameters. Primary/Alternate Gatekeeper filed indicates whether or not the device is registered successfully
Set the E.164 prefix / H.323 alias for the system

- 7 If your IP network type is H.323 only, go to step 10.
- 8 To configure the SIP server, click the **SIP Server** tab.



Set the transport layer protocol used for communicating with the SIP server.
Check the option to register to SIP Server
Set the Primary/Alternate SIP server parameters. *Primary /Alternate Server* filed indicates whether or not the device is registered successfully. Enter the user name and password provided by the SIP server.
Optional: Set the IP address and port number for the outbound proxy server.

9

10 Click **OK**.

The system is now ready for use. For additional configuration instructions, please refer to the *Polycom RMX 1000 System User Guide*.

Starting a Conference via Remote Control

The RMX 1000 conference platform offers several ways to start a conference. Participants can dial into a meeting room configured by the administrator or create their own conference ID on-the-fly and invite additional participants by adding their endpoint numbers to the dial string. The following sections describe how to start a simple conference using a dial-in string the user created to initiate a conference.

H.323 Participants

H.323 participants dial:

<RMX 1000 Prefix in Gatekeeper><Conference ID>[##Conference Password][##Chairperson Password]

Here, the character in [] is optional.

For example, if RMX 1000 prefix in gatekeeper is 925, to create a conference which ID is 1001, dial 9251001. At the meantime if want to set a conference password 1111 and a chairperson password 2222, dial 9251001##1111##2222

SIP Participants

SIP participants dial:

<Conference ID>[##Conference Password][##Chairperson Password]@<RMX 1000 Static Route Domain Name>

Here, the character in [] is optional.

For example, if RMX 1000 static route domain name is polycom.com, to create a conference which ID is 1001, dial 1001@ polycom.com. At the meantime if want to set a conference password 1111 and a chairperson password 2222, dial 1001\$\$1111\$\$2222@polycom.com

Connecting to a Conference via Remote Control

A user can directly dial in to the ongoing conference or meeting room using the remote control. In this way, the user must obtain the conference ID and password (if the conference password or chairperson password is set) first.

H.323 Participants

H.323 participants dial:

<RMX 1000 Prefix in Gatekeeper><Conference ID>[##Conference Password or Chairperson Password].

Here, the character in [] is optional.

For example:

RMX 1000 prefix in gatekeeper: 925

ID of the conference to be dialed in: 1001

Then, the endpoint dials 9251001

If the conference to be dialed in is set with the conference password 1111 and chairperson password 2222

Then, the regular participant dials 9251001##1111

The conference chairperson dials 9251001##2222

SIP Participants

SIP participants dial:

<Conference ID> [##Conference Password or Chairperson Password]@<RMX 1000 Static Route Domain Name>

Here, the character in [] is optional.

For example:

RMX 1000 static route domain name: polycom.com

ID of the conference to be dialed in: 1001

Then, the endpoint dials 1001@ polycom.com

If the conference to be dialed in is set with the conference password 1111 and chairperson password 2222

Then, the regular user dials 1001\$\$1111@ polycom.com

The conference chairperson dials 1001\$\$2222@ polycom.com.

Free Manuals Download Website

<http://myh66.com>

<http://usermanuals.us>

<http://www.somanuals.com>

<http://www.4manuals.cc>

<http://www.manual-lib.com>

<http://www.404manual.com>

<http://www.luxmanual.com>

<http://aubethermostatmanual.com>

Golf course search by state

<http://golfingnear.com>

Email search by domain

<http://emailbydomain.com>

Auto manuals search

<http://auto.somanuals.com>

TV manuals search

<http://tv.somanuals.com>