
Marathon Technologies FTvirtual Server™ and IBM BladeCenter™

*Installing and Configuring a Fault-Tolerant Windows
Environment for Mission Critical Applications*



Marathon Technologies Corporation
www.marathontechnologies.com
888.682.1142

Notices

Marathon Technologies Corporation reserves the right to make improvements to this guide and the product it describes at any time and without further notice.

Copyright

© Marathon Technologies Corporation. 1996-2005. All rights reserved.

This guide is copyrighted, and all rights are reserved. No part of this guide or the products it describes may be reproduced by any means or in any form, without prior consent in writing from Marathon Technologies Corporation.

Printed in the U.S.A.

U.S. Patent Numbers: 5,600,784; 5,615,403; 5,787,485; 5,790,397; 5,896,523; 5,956,474; 5,983,371; 6,038,685; 6,205,565; and 6,728,898.

European Patent Numbers: EP0974912; EP0731945; EP0993633; EP0986784; and EP1000397.

Other patents pending.

Software Copyright Notice

The software described in this document is covered by the following copyright:

© Marathon Technologies Corporation. 1996-2005.

Trademark Notice

Endurance, Marathon Assured Availability, Marathon FTvirtual Server, and the Marathon logo are either registered trademarks or trademarks of Marathon Technologies Corporation in the United States and/or other countries.

Microsoft, MS-DOS, and Windows are registered trademarks of Microsoft Corporation in the United States and/or other countries.

IBM eServer BladeCenter and IBM are registered trademarks of the International Business Machines Corporation in the United States and/or other countries.

All other brands and product names are trademarks of their respective companies or organizations.

Software Revision

The revision of the software that this document supports is Revision 6.1.1.

This section describes the technical changes made in this edition of the Marathon Technologies FTvirtual Server™ and IBM eServer BladeCenter™ - A Fault-Tolerant Environment for Mission Critical Windows Applications application note. Minor changes and editorial corrections may also be included that are not identified.

Summary of changes

Summary of changes for
Marathon Technologies FTvirtual Server and IBM
eServer BladeCenter™ - A Fault-Tolerant Environment
for Mission Critical Windows
as created or modified on 9/2/05.

September 2005, First Edition

1.0.0

Contents

Notices	ii
Copyright	ii
Software Copyright Notice	ii
Trademark Notice	iii
Software Revision	iii
Summary of changes	iv
September 2005, First Edition	iv

CHAPTER 1 Introduction

Fault-Tolerant Computing for Mission Critical Windows Applications	1
The Trend Toward Blades	1
Mission-Critical Blades: The Need For Fault Tolerance.	2
Marathon FTvirtual Server - Fault-Tolerance Through Software	3
Conclusion	3

CHAPTER 2 Planning and Preparation

Planning the Installation	5
FTvirtual Server Boot Disk Options	5
Network Environment.	6
CoServer and Switchbay Network Connections	6
Figure - Sample BladeCenter Network Adapter Switchbay Map.	7
Network Adapter Configurations	8
Table - 4 NIC Configuration.	8
Table - 3 NIC Configuration.	8
Table - 3 NIC Alternate Configuration	8
Table - 2 NIC Configuration.	9
Preparing to Install	10
BladeCenter Options	10
FTvirtual Server and Blade Configuration	11
Identifying Network Components	11
Mapping the Switchbays	12
Table - Adapter PCI-to-Switchbay Mappings	12

CHAPTER 3 Installing the Endurance Software

Major Installation Tasks	13
Windows Installation	14
Installing Windows on the CoServers	14
Event Log Recommendations	14
Disk Partitioning and Formatting	15
Installing the FTvirtual Server Boot Disk on a Physical Disk	16
Installing Endurance Software on the CoServers	18
Before You Begin the Software Installation	18
CoServer 1 Installation	19
Starting the Installation	19
Specify the Location of the Software	20
Configure the Network using the Endurance Network Setup Wizard	21
Table - Suggested CoServer1 CLink IP Addresses	23
CoServer 2 Installation	29
Table - Suggested CoServer2 CLink IP Address	30
Installing Windows on and Configuring the FTvirtual Server	34
Select CoServer Devices for FTvirtual Server Use and Configure the FTvirtual Server Disk ..	34
Install Windows on the FTvirtual Server Disk	38
Finish the Windows Installation	39
Install the Endurance FTvirtual Server Software	40
Specify the Location of the Software	40
Finish the FTvirtual Server Installation	41
Verifying the FTvirtual Server Installation	42
What to do Next	43

This chapter discusses the key advantages of IBM BladeCenter and Marathon Technologies FTvirtual Server and how they combine to create a truly fault-tolerant environment for mission critical Windows applications.

Fault-Tolerant Computing for Mission Critical Windows Applications

The Trend Toward Blades

Blade configurations like the IBM BladeCenter have become popular because they provide several key advantages over conventional pedestal or rack-mounted servers. These advantages include:

- **Flexibility and Ease of Installation**

Because blades get their electrical power and network interconnections from the chassis, adding processing power to an existing chassis is as simple as inserting the blade and configuring its software and network address. No additional cabling or electrical power connections are required.

- **Ease of Management**

System management tools like the IBM Director permit hundreds of blade servers to be maintained remotely through use of a single graphical console. This tool provides a common management view across multiple servers in a chassis and enables a smaller IT staff to manage the same number of servers.

- **Reduced Floor Space Usage in the Data Center**

Modular design reduces cost through more efficient use of valuable floor space. The increased density can significantly reduce the space requirements in a data center.

- **Reduced Cost of Power and Cooling**

Blades servers integrate resources and share key components. Since blades in a chassis share common power supplies, power is distributed more efficiently and less heat is generated for a given amount of processing power.

- **Increased Reliability and Availability**

Since the BladeCenter may be configured with redundant hot-swap power supplies and built-in network switches, it effectively eliminates several key single points of failure and provides greater system availability than conventional rack-mount servers. The BladeCenter also reduces down-time due to server failure by making replacement of a failed server easy.

Mission-Critical Blades: The Need For Fault Tolerance

As enterprises move more compute load to blade servers, blades are becoming increasingly mission-critical. Because downtime has significant associated costs - lost sales, decreased customer satisfaction, lost productivity - the need for a simple, affordable way to keep blades running continuously is becoming urgent. Four trends are converging to further increase the need for continuously available blades:

- Improved server density and server consolidation increases the potential risk to business operations in the event of downtime by "putting all your eggs in one basket"
- Increasingly stringent regulations require data retention and availability
- More threats to security and physical systems
- Increasing complexity of enterprise infrastructure, and impact of system downtime

Marathon FTvirtual Server - Fault-Tolerance Through Software

To address the need for continuous availability of mission-critical applications, Marathon Technologies has designed its FTvirtual Server software to work with blade server configurations as well as traditional servers.

Marathon software harnesses the redundancy provided by two BladeCenter servers to create a true, fault-tolerant environment for Windows applications. This is accomplished by loading the Marathon software on any two blade servers and interconnecting them via the BladeCenter's integrated chassis switching matrix. The Marathon software synchronizes the two servers and creates a virtual application environment that runs *on both servers simultaneously*. If either server in the connected pair fails, the application environment continues to function uninterrupted, using the processing power of the other. Unlike typical clustering technologies which require seconds or even minutes to "fail-over" application processing and may incur data loss, there is no failover with Marathon software, so there is no downtime.

The result is a truly fault-tolerant Windows environment for BladeCenter configurations. Enterprises get all the cost savings and operational efficiencies of the BladeCenter while protecting their business-critical Windows applications and data, even in the event of a blade failure.

Conclusion

Blade servers are helping companies save money and increase efficiency and flexibility in their data centers. However, without adequate fault protection, these benefits are soon lost in the event of downtime. Marathon's FTvirtual Server software delivers a simple, affordable way to protect important applications and data running on IBM eServer BladeCenter configurations.



This chapter describes BladeCenter features and options, key design concepts, and basic configuration guidelines you should be aware of before beginning to install and setup a BladeCenter FTvirtual Server.

Planning the Installation

Before starting the Endurance software installation you should consider several major configuration related issues, which will effect the overall operation and capability of your FTvirtual Servers.

FTvirtual Server Boot Disk Options

The Endurance software allows the FTvirtual Server boot disk to be installed on either a separate physical disk or as a Virtual disk. If your blade configuration is limited to a single on-board physical disk you will need to use a Virtual boot disk for the FTvirtual Server. A virtual boot disk allows you to share a single physical disk as both the CoServer and the FTvirtual Server Windows boot disk. Disk space is allocated to a file on the CoServer disk. The content of the file is then formatted, partitioned, and used as the FTvirtual Server boot disk.

Network Environment

The optimal FTvirtual Server configuration uses 4 network adapters per blade to support CoServer communications and client access links critical to applications. These links provide the mechanisms and transport for redirected network I/O, FTvirtual Server communications and fault management activities.

When using the optimal network configuration, two of the adapters in each blade will support CoServer Links (CSLink) 1 and 2, which are primarily used for disk mirroring and memory synchronization operations. A third adapter in each blade is used for CoServer out-of-band remote administration and SNMP management activities. The fourth serves as a redirected network link permitting the FTvirtual Server to satisfy client and application I/O requests.

CoServer and Switchbay Network Connections

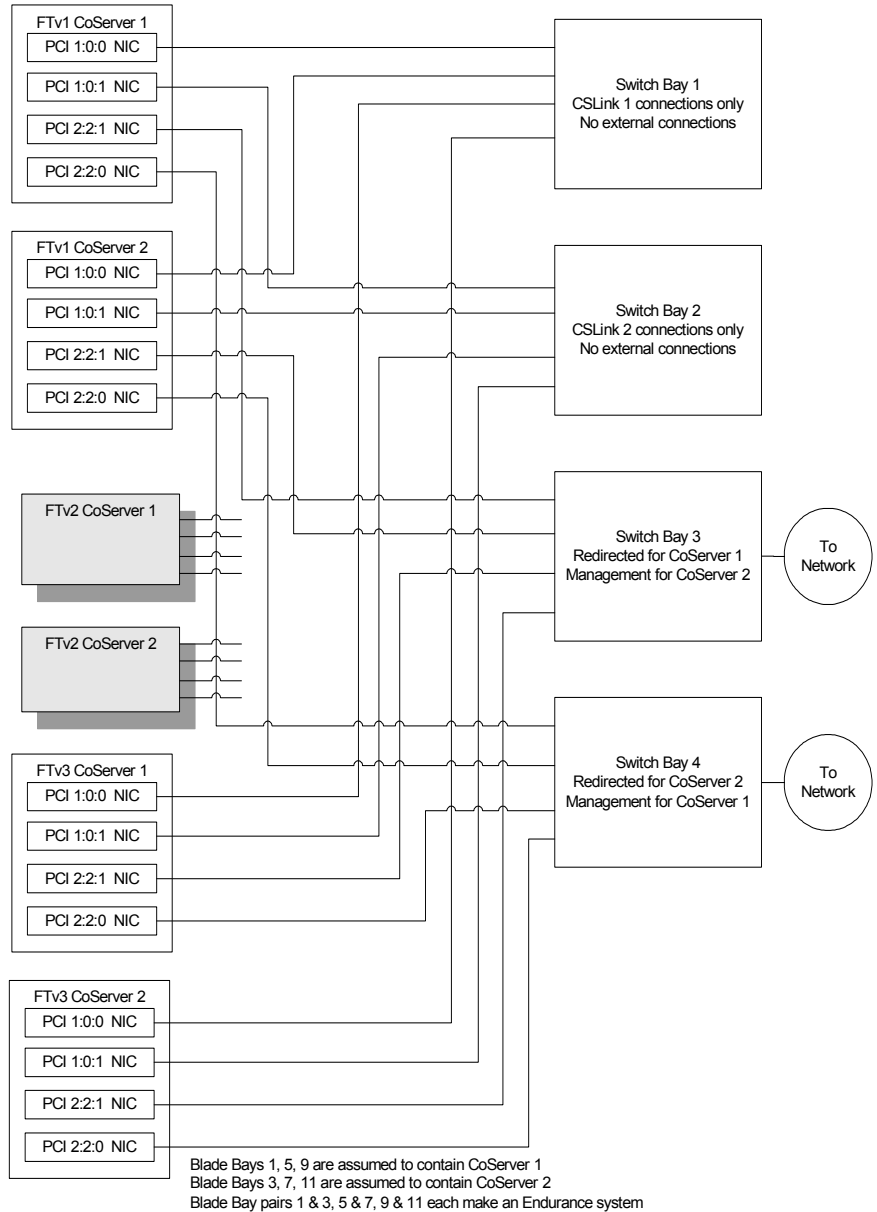
A sample BladeCenter network map depicting the connections for two FTvirtual Server configurations (FTv1 and FTv3) is shown in Figure 1. This configuration demonstrates the optimal BladeCenter FTvirtual Server configuration, maximizing server fault-tolerance and network availability.

It should be mentioned that although each switchbay is internally interconnected with each slot of the BladeCenter chassis, these additional connections have been left out of the diagram for the sake of simplicity.

Note that in this 4 NIC configuration switchbays 1 and 2 provide dedicated CSLink 1 and CSLink 2 switching capability for each of the FTv CoServers. These connections are made internally to the BladeServer chassis and none of the external ports available on these two switches are used for external connections.

Switchbays 3 and 4 are configured for FTvirtual Server Redirected and Management use. The four external ports available on these switches are used to connect the FTvirtual Server/s to the public network.

FIGURE 1. Sample BladeCenter Network Adapter Switchbay Map



Network Adapter Configurations

Depending upon your specific switchbay and blade on-board device configuration, it is possible that fewer than 4 adapters will be available for use. When planning a BladeCenter network configuration your primary concern should be to maximize the availability of the redirected network links and minimize utilization of external networks by the CoServer links.

To maximize the availability of the redirected links, different switches should be used to connect the CoServers to the external network. To minimize utilization of the external network by the CoServer links, both CoServers should use the same internal switch for a CSLink connection. Routing a CSLink connection through the same switch will confine all associated traffic to that switch. Several recommended network configurations using 4, 3, and 2 network adapters are shown in the following tables.

TABLE 1. 4 NIC Configuration

Function	CoServer 1	CoServer 2	Comment
CSLink 1	Switchbay 1	Switchbay 1	Internal Bandwidth
CSLink 2	Switchbay 2	Switchbay 2	Internal Bandwidth
Redirected	Switchbay 3	Switchbay 4	Redundant External Connection
Manage	Switchbay 4	Switchbay 3	Redundant External Connection

TABLE 2. 3 NIC Configuration

Function	CoServer 1	CoServer 2	Comment
CSLink 1	Switchbay 1	Switchbay 1	Internal Bandwidth
Redirected	Switchbay 2	Switchbay 3	Redundant External Connection
CSLink 2	Switchbay 3	Switchbay 2	Exposed network utilization Requires network routed IP address

TABLE 3. 3 NIC Alternate Configuration

Function	CoServer 1	CoServer 2	Comment
CSLink 1	Switchbay 1	Switchbay 1	Internal Bandwidth
Redirected	Switchbay 2	Switchbay 3	Redundant External Connection
Manage	Switchbay 3	Switchbay 2	Redundant External Connection

TABLE 4. 2 NIC Configuration

Function	CoServer 1	CoServer 2	Comment
CSLink 1	Switchbay 1	Switchbay 2	Exposed network utilization. Requires network routed IP address.
Redirected	Switchbay 2	Switchbay 1	Redundant External Connection

For More Information

For more information on setting-up network configurations, Virtual boot disks and other preparation issues consult the following resources located on your Marathon software distribution CD-ROM:

- Administrator's Guide
- Upgrading Endurance Software
- Configuration and Installation Guide

Preparing to Install

BladeCenter Options

An IBM eServer BladeCenter may be configured using a variety of storage and networking options. For example, the BladeCenter chassis using HS20 blade servers offers the following configuration features:

- A rack-optimized 7U modular 14 slot chassis that can support a total of 14 hot-swap BladeCenter HS20 blades.
- A CD-ROM and floppy shared by all blade bays.
- A maximum of two Management modules integrating remote management functions and a 14-port Keyboard/Video/Mouse switch.
- Up to 4 Gigabit Ethernet Switch modules. Each switch has four external ports as well as 14 internal ports (one to each bay).
- HS20 hot-swappable blades supporting two XEON processors, 4-port Gigabit Ethernet modules, on-board disks and/or a piggy-backed SCSI drive Expansion Unit.

FTvirtual Server and Blade Configuration

Each Endurance FTvirtual Server configuration is comprised of two blades. Following installation of the Endurance software each will function as a CoServer to create the FTvirtual Server environment.

Depending upon the specific configuration, a 14 slot BladeCenter chassis can support a total of 7 Endurance FTvirtual Servers (2 slots per FTvirtual Server), using single-slot blades configured with one or two on-board disks and four network adapters. If each blade is configured with four network adapters and a piggy-backed SCSI Expansion Unit option for increased storage capacity, a total of 3 Endurance configurations (4 slots per FTvirtual Server) may be supported.

It is important to note that the chassis slot position of a blade has no impact on its function. After an Endurance system has been established, the blades can be moved to any chassis slot and located in any order. Data communications between Endurance configured blades is controlled by IP addresses, which are unique to a blade and FTvirtual Server blade pair.

Identifying Network Components

To help simplify Endurance software installation it is suggested that you first create a chart that maps blade configured network adapters to their corresponding ethernet switchbay connection. Since this mapping may vary across blade (HSxx) models, it is important that you identify these connections prior to installation. Later, during the network setup phase of the installation you will be able to correlate a CoServer assigned networking role to its corresponding adapter and ethernet switchbay connection.

A specific network adapter must be identified by its unique PCI bus location in the system in terms of:

“PCI bus **b**, device **d**, function **f**”

Switchbays may be identified from the back of the BladeCenter cabinet by the number of the particular bay they reside in.

Mapping the Switchbays

After installation of the Windows operating system on a blade you can fill-in the switchbay mapping table for your particular configuration using the following procedure.

Note: Do not perform PCI-to-Switchbay mappings when blades within the chassis are operating within a production environment.

1. On one of the CoServer blades right-click **My Network Places** to view the **Network Connections** dialog.
2. From the back of the BladeCenter cabinet select a switchbay and unplug it.
3. Return to the CoServer console and observe the **Network Connections** dialog and note which connection experiences a status change.
4. Right-click on the connection that changed status to display the **Local Area Connection Properties**.
5. Click the **Configure** button to display the controller properties. Note the switchbay number of the switch you unplugged and record the corresponding PCI location information for that adapter in Table 4. Plug the switchbay back into its slot and wait for the connection status to return to normal.
6. Repeat this procedure for each configured ethernet switchbay until you have identified all connections. Since these connections will hold for like blade models this mapping will work for all other configured blades.

TABLE 5. Adapter PCI-to-Switchbay Mappings

Blade Model	Switchbay 1	Switchbay 2	Switchbay 3	Switchbay 4
Blade HS20 8832 Chassis	1:0:0 (b:d:f)	1:0:1 (b:d:f)	2:2:1 (b:d:f)	2:2:0 (b:d:f)
Blade HS20 8843 Chassis	5:1:0	5:1:1	6:1:0	6:1:1
Blade HSXX 88nn Chassis				

Installing the Endurance Software

This chapter describes in detail how to install and configure the Endurance software on each of the BladeCenter CoServers to create the FTvirtual Server.

Major Installation Tasks

The major installation tasks are:

1. Install Windows on both CoServers.
2. Install Endurance software on CoServer 1.
3. Install Endurance software on CoServer 2.
4. Install Windows on and configure the FTvirtual Server

Windows Installation

Before you begin the Endurance installation, install Windows and set the size of the event logs.

Installing Windows on the CoServers

On both CoServers:

Install the appropriate Windows software and Service Packs. Refer to the Endurance Release Notes for information about hardware and software requirements, including Windows Security Updates.

Note: If the **Manage Your Server** or **Configure Your Server** window appears, click **Don't display this page at logon**, and then dismiss the window.

Event Log Recommendations

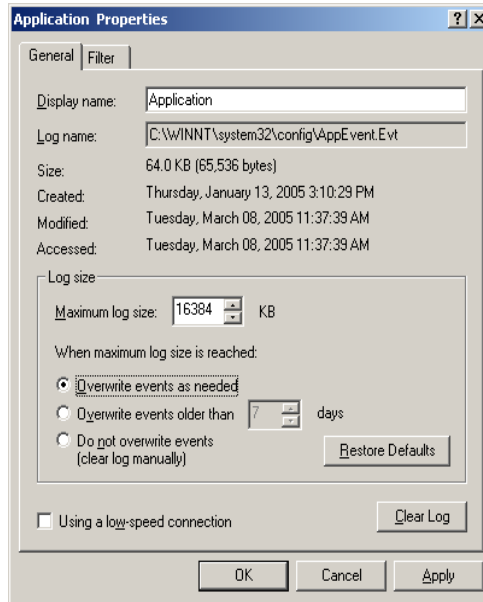
On both CoServers:

For best results in tracking system events, make sure that the Application Log and System Log on both CoServers are set to at least 16384 KB.

From **Computer Management**, select **Event Viewer**. For each log:

Right click, and select **Properties**.

If necessary, change the **Maximum log size** to at least **16384** KB. Verify that the **Overwrite events as needed** box is checked.



Disk Partitioning and Formatting

The Windows operating system for the FTvirtual Server will be installed on a disk of each blade CoServer. You can select a physical disk in the CoServer for the FTvirtual Server boot disk or you can install the FTvirtual Server on an Endurance Virtual disk. A Virtual boot disk is a CoServer disk that you can create by allocating space in the file system of any existing CoServer disk and then, using Endurance software, creating a Virtual disk from this file space. The Virtual disk can then be mounted, formatted and partitioned like any physical disk. This allows you to use one physical disk for booting both the CoServer and the FTvirtual Server on blade systems configured with only a single physical disk.

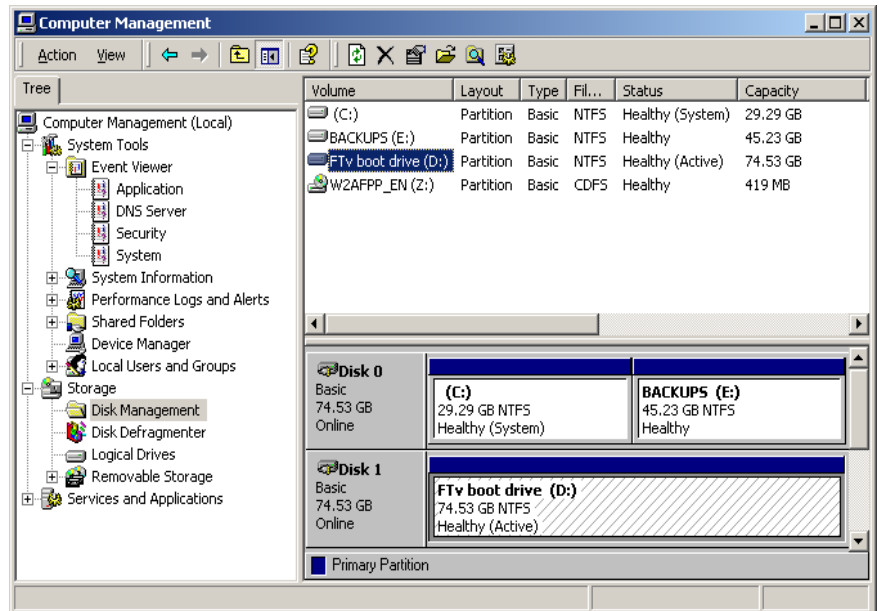
If you wish to install the FTvirtual Server boot disk on a physical disk, continue on with the next section. If you want to install the FTvirtual Server boot disk on a Virtual disk skip the next section and proceed to Installing Endurance Software on the CoServers. Setup of the Virtual disk will be covered later during the CoServer installation procedure.

Installing the FTvirtual Server Boot Disk on a Physical Disk

On CoServer 2:

The disk for the FTvirtual Server software must be Basic and formatted to use the NTFS file system.

1. Right-click **My Computer**, then select **Manage** → **Computer Management** → **Storage** and then **Disk Management**. Make sure Disk 1 is **basic**, not dynamic.
2. If the partition is not basic, right click and select **Revert to Basic**. Right-click on unallocated Disk 1, and use the wizard that creates partitions to create the FTvirtual Server boot drive.
 - Select Primary partition.
 - Specify the partition size.
 - Assign a drive letter. Record this drive letter for later use during FTvirtual Server installation.
 - Format the partition using NTFS.
 - Rename the drive (volume label) **FTv boot drive**.
3. Mark the drive active.
 - If you plan to use additional disks for applications, make sure that they are designated Basic and not Dynamic.



4. Verify the destination on the **Ready to Install** window, and click **Install**.
5. Click **Finish** on the **Completing the Endurance Quorum Service Setup Wizard**.

Installing Endurance Software on the CoServers

Before You Begin the Software Installation

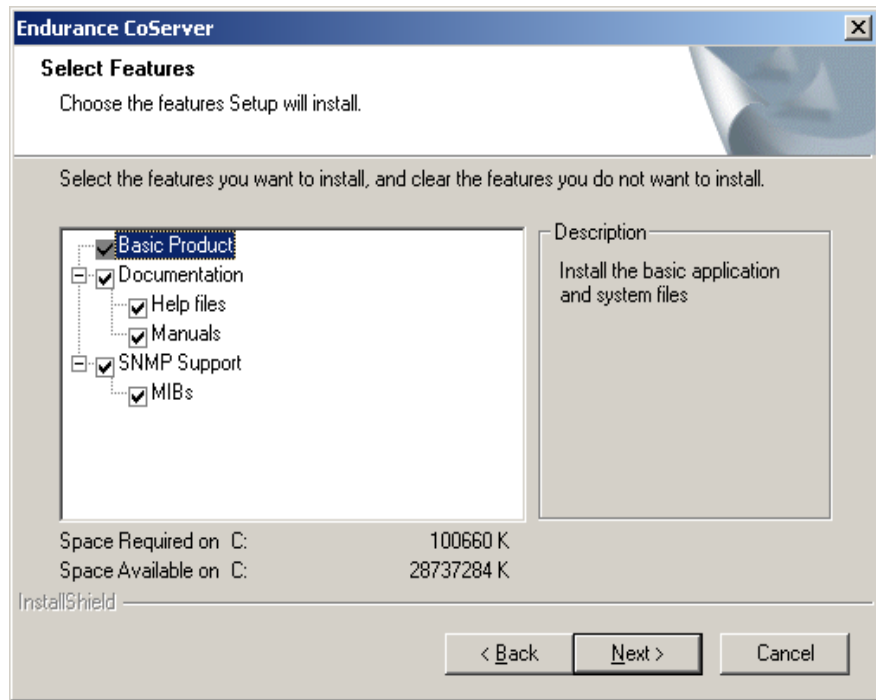
- Have your Endurance software license number available. You need to type it when you install the software on the CoServers.
- Know the PCI location-to-switchbay mappings for each network adapter. This information will be used when the Endurance Network Setup runs.
- Make sure all network connections are Enabled and connected. Right click on **My Network Places** and select **Properties**. Examine the status of each connection. If the connection is Disabled, you must Enable that connection. Make sure each connection has a status of Connected.
- Gather information for installing Windows on the FTvirtual Server:
 - The Windows license type: Per server or Per seat
 - The computer name
 - The user name
 - The organization name
 - The Windows Product Key

Note: If you are slip streaming for the FTvirtual Server's Service Pack, refer to the Microsoft documentation for information about preparing the Windows installation. After the Service Pack is applied, it takes the place of the Windows distribution media.

CoServer 1 Installation

Starting the Installation

1. Insert the Endurance CD. If your CD does not automatically launch the **Installation Launcher**, browse the CD and double click on **setup.exe**.
2. From the **Installation Launcher**, select **Install CoServer**, and follow the prompts through the **Welcome**, **License Agreement**, and **Information** dialogs to the **Customer Information** dialog.
3. Type a user name, company name, and the license number (including the dashes).
4. Verify the name, company, and license number on the **Registration Confirmation** page.
5. In the **Select Features** window, choose the components you want to install.
 - Select **Basic Product**, the default.
 - Marathon recommends that you also install the other defaults: **Documentation** and **SNMP Support**.



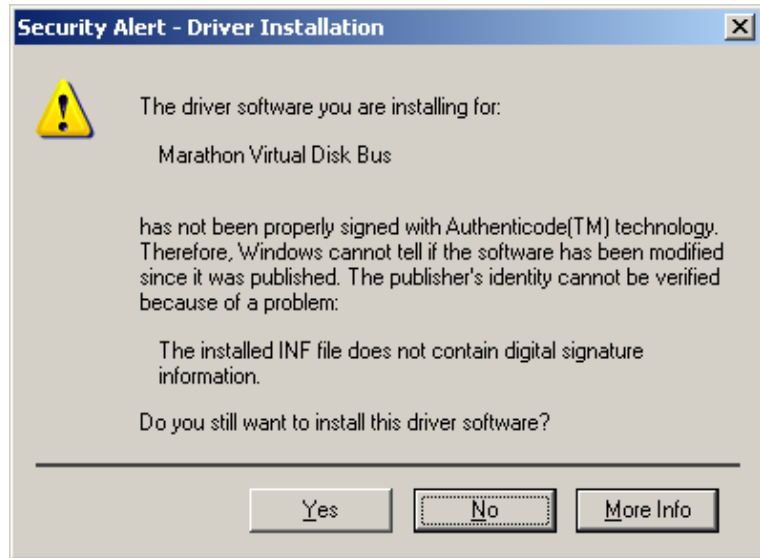
6. Select CoServer1 for installation.

Specify the Location of the Software

1. On the **Choose Destination Location** window, save the files in the default location C:\Program Files\Marathon\Endurance or specify another location.
2. On the **Confirm New Folder** window, click **Yes**.
3. Verify the information on the **Check Setup Information** window. Click **Next**.

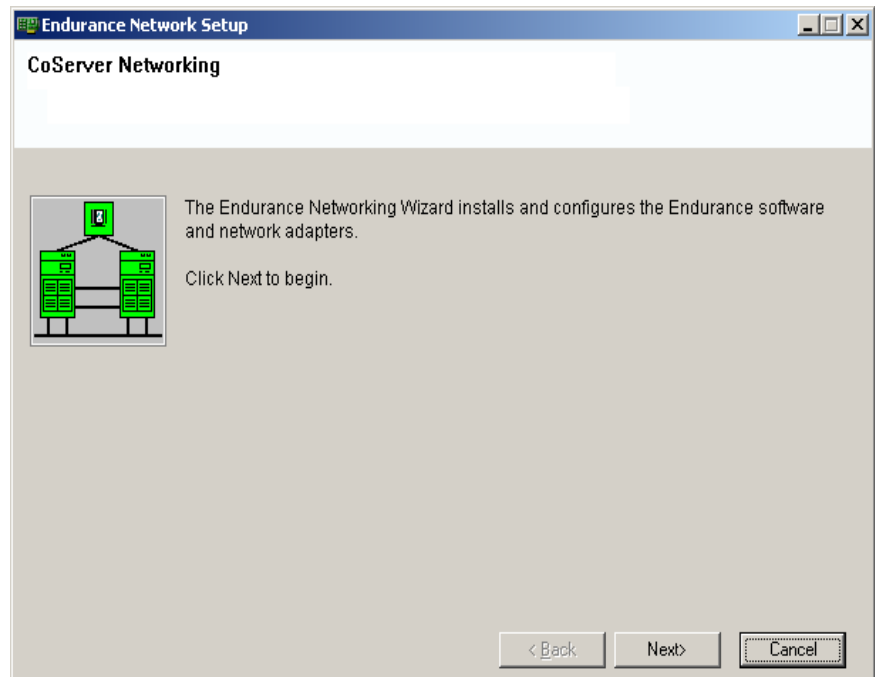
Configure the Network using the Endurance Network Setup Wizard

If you are installing on a Windows 2003 system, the following Security Alert may appear.

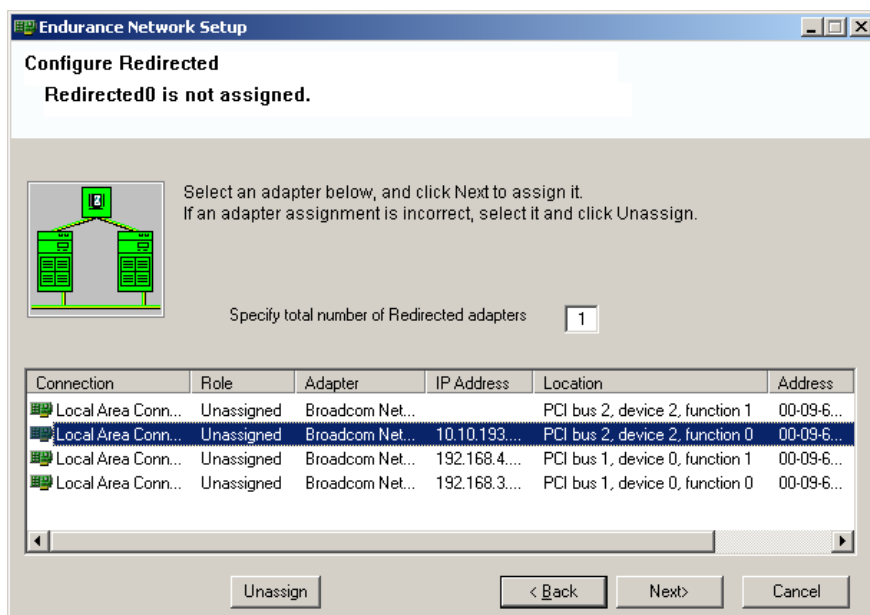


Click **Yes** to continue with Endurance Network Setup.

The Endurance Network Setup wizard starts to guide you through the task of configuring the adapters. Click Next to begin.



1. On the **Configure Redirected** page, enter 1 in the **Specify total number of Redirected adapters** box and highlight the adapter you wish to assign as redirected in the **Connection** column. Select the adapter to be used based upon the PCI location-to-switchbay mapping you established during planning and preparation. Click Next to continue.

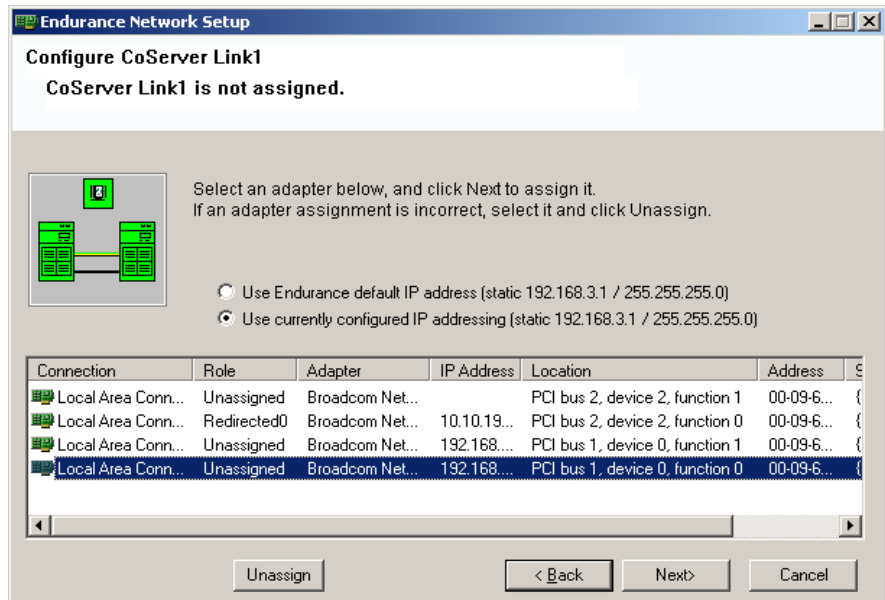


2. On the **Configure CoServer Link1** page, highlight the adapter you wish to assign as CoServer Link1 in the **Connection** column. Select the adapter based upon the PCI location-to-switchbay mapping you established during planning and preparation. You can use Table 1 to assign IP addresses for internal CLink connections.

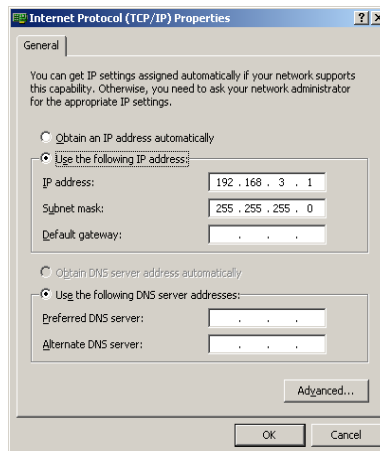
TABLE 1. Suggested CoServer1 CLink IP Addresses

	Blade Pair 1		Blade Pair 2		Blade Pair 3	
	CoServer1	CoServer2	CoServer1	CoServer2	CoServer1	CoServer2
CSLink1	192.168.3.1	192.168.3.2	192.168.13.1	192.168.13.2	192.168.23.1	192.168.23.2
CSLink2	192.168.4.1	192.168.4.2	192.168.14.1	192.168.14.2	192.168.24.1	192.168.24.2

Note: When installing multiple blade pairs, the first blade pair will have the same IP for both the default IP and the currently configured IP. This will not be the case for subsequent blade pairs.



Right click on the your adapter selection and choose **Internet Protocol Properties** from the action menu. On the **Internet Protocol Properties** page select **Use the following IP address**. Fill-in the appropriate IP address from Table 1 for this adapter. Then, enter **Subnet mask 255.255.255.0** and click OK.



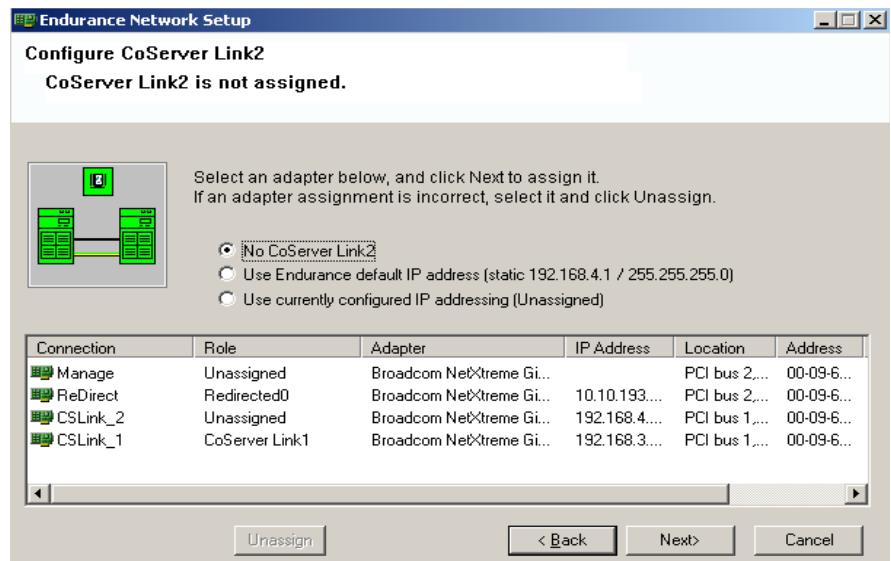
On the **Endurance Network Setup** page make sure that the desired adapter is still highlighted and select **Use currently configured IP addressing**. Click Next to continue.

3. If your network configuration will not use CoServer Link 2, select **No CoServer Link 2** and then click **Next** without selecting an adapter.

If you will be using CoServer Link 2, then on the **Configure CoServer Link2** page, highlight the adapter you wish to assign as CoServer Link2 in the **Connection** column. Select the adapter based upon the PCI location-to-switchbay mapping you established during planning and preparation. You can use Table 1 to assign IP addresses for internal CLink connections.

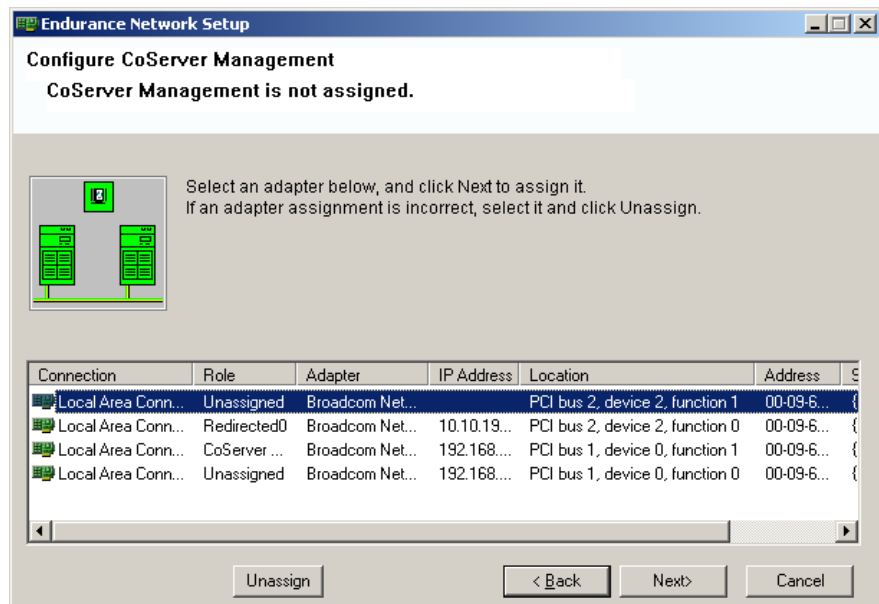
Right click on the adapter selection and choose **Internet Protocol Properties** from the action menu. On the **Internet Protocol Properties** page select **Use the following IP address** and fill-in the appropriate address. Then, enter **Subnet mask 255.255.255.0** and click OK.

On the **Endurance Network Setup** page make sure that the desired adapter is still highlighted and select **Use currently configured IP addressing**. Click Next to continue.



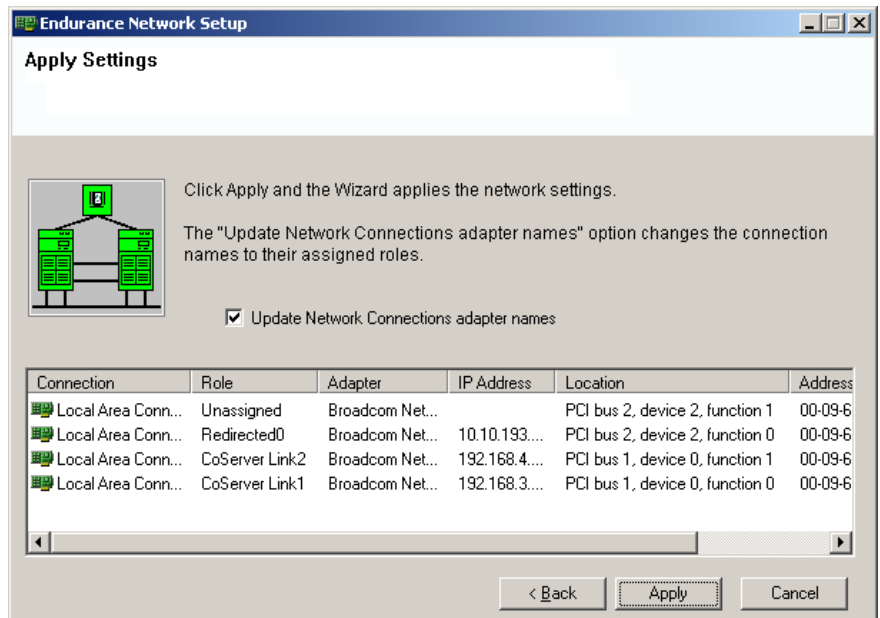
4. If your network will not use a CoServer Management connection, push **Next** without highlighting an adapter.

If you will be using CoServer Management, then on the **Configure CoServer Management** page, highlight the adapter you wish to assign for CoServer Management in the **Connection** column. Select the adapter based upon the PCI location-to-switchbay mapping you established during planning and preparation.



If you wish to assign an IP address, right click on the selection and choose **Internet Protocol Properties** from the action menu. On the **Internet Protocol Properties** page select **Use the following IP address**, fill-in the appropriate address, enter the desired Subnet mask and click OK. Click Next to continue.

- On the **Endurance Network Setup** page if the **Update Network Connections adapter names** box is checked, when you restart the system Network Setup will reassign the adapter names. Click **Apply**.



- When the **Endurance Network Setup Settings Applied** page appears click **Exit**.
- Click **Yes** to restart the CoServer.
- When the system restarts the Endurance Network Setup wizard starts automatically to complete network configuration. On Windows 2003, Hardware Installation pop-ups may appear. Click **Continue Anyway**.
- If the video quality pop-up message appears, choose the desired response.
- The Endurance FTvirtual Server Desktop window will be displayed in the top left corner of the CoServer desktop with the text **Endurance FTvirtual Server Offline**.

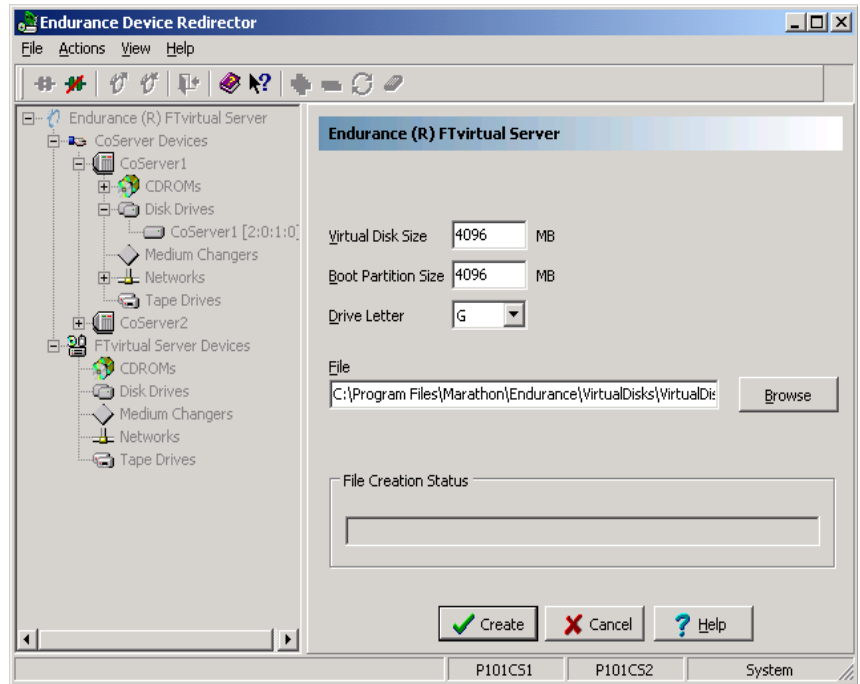
11. The message **Do you want to create a virtual disk for use as the FTvirtual Server boot disk?** is displayed. A virtual boot disk is required if there is only one physical disk in the CoServer. A virtual boot disk is created as a way to share a single physical disk as both the CoServer and the FTvirtual Server Windows boot disk. Disk space is allocated to a file on the CoServer disk. The content of the file is then formatted, partitioned, and used as a member of the FTvirtual Server boot disk.

If you select **No**, skip ahead to the CoServer 2 installation section.

If you select **Yes** the **Device Redirector Connections** dialog is displayed. Click **OK**, to create a Virtual boot disk.

Create a Virtual Disk

- On the displayed Device Redirector dialog set:
 - The virtual disk size. The default is 4 gigabytes.
 - The boot partition size. Specify a size less than or equal to the virtual disk size. The default size is the virtual disk size.
 - A drive letter to use when you mount the virtual disk on CoServer 1. The default is the next available drive letter.
 - Location on CoServer 1 of the file that becomes the virtual disk.



- Click **Create** to create the virtual disk.

This may take a few minutes, depending on the size of the virtual disk. When the virtual disk is created, the Device Redirector displays a dialog showing the name of the file that was created, the SCSI ID of the newly created virtual disk, and the drive letter associated with the NTFS-formatted boot partition.

- Click **OK**.

12. Continue with CoServer 2 Installation.

CoServer 2 Installation

Press both media device select buttons on the front panel of the Blade you have chosen for CoServer2 to assign connection of the console display and CDROM to that server.

1. Browse the CD and double-click **setup.exe**.
2. From the **Installation Launcher**, select **Install CoServer**. Follow the prompts as you did during CoServer 1 installation to set the license number, select features, choose CoServer 2 install, and define the installation location. When the Endurance Network wizard runs proceed to step 3 below.
3. On the **Configure Redirected** page, enter 1 in the **Specify total number of Redirected adapters**, and highlight the adapter you wish to assign as Redirected in the **Connection** column. Select the adapter based upon the PCI location-to-switchbay mapping you established during planning and preparation.
4. On the **Configure CoServer Link1** page, highlight the adapter you wish to assign as CoServer Link1 in the **Connection** column. Select the adapter based upon the PCI location-to-switchbay mapping you established during planning and preparation. You can use Table 2 to assign IP addresses for internal CLink connections.

TABLE 2. Suggested CoServer2 CLink IP Address

	Blade Pair 1		Blade Pair 2		Blade Pair 3	
	CoServer1	CoServer2	CoServer1	CoServer2	CoServer1	CoServer2
CSLink1	192.168.3.1	192.168.3.2	192.168.13.1	192.168.13.2	192.168.23.1	192.168.23.2
CSLink2	192.168.4.1	192.168.4.2	192.168.14.1	192.168.14.2	192.168.24.1	192.168.24.2

Note: When installing multiple blade pairs, the first blade pair has the same IP for both the default IP and the currently configured IP. This will not be the case for subsequent blade pairs.

Right click on the adapter selection and choose **Internet Protocol Properties** from the action menu. On the **Internet Protocol Properties** page select **Use the following IP address** and fill-in the appropriate address. Then, enter **Subnet mask 255.255.255.0** and click OK.

On the **Endurance Network Setup** page make sure that the desired adapter is still highlighted and select **Use currently configured IP addressing**. Click Next to continue.

5. If your network configuration will not use CoServer Link 2, select **No Coserver Link 2** and then click **Next** without selecting an adapter.

If you will be using CoServer Link 2, then on the **Configure CoServer Link2** page, highlight the adapter you wish to assign as CoServer Link2 in the **Connection** column. Select the adapter based upon the PCI location-to-switchbay mapping you established during planning and preparation.

Right click on the selection and choose **Internet Protocol Properties** from the action menu. On the **Internet Protocol Properties** page select **Use the following IP address**, fill-in the appropriate address, enter **Subnet mask 255.255.255.0** and click OK.

On the **Endurance Network Setup** page make sure that the desired adapter is still highlighted and select **Use currently configured IP addressing**. Click Next to continue.

6. If your network will not use a CoServer Management connection, push **Next** without highlighting an adapter

If you will be using CoServer Management, then on the **Configure CoServer Management** page, highlight the adapter you wish to assign for CoServer Management in the **Connection** column. Select the adapter based upon the PCI location-to-switchbay mapping you established during planning and preparation.

If you wish to assign an IP address, right click on the selection and choose **Internet Protocol Properties** from the action menu. On the **Internet Protocol Properties** page select **Use the following IP address**, fill-in the appropriate address, enter the desired Subnet mask and click OK. Click Next to continue.

7. On the **Endurance Network Setup** page if the **Update Network Connections adapter names** box is checked, when you restart the system Network Setup will reassign the adapter names. Click Apply.
8. Click **Exit**.

9. Click **Yes** to restart the CoServer.
10. When the system restarts the Endurance Network Setup wizard starts automatically to complete network configuration. On Windows 2003, Hardware Installation pop-ups may appear. Click **Continue Anyway**.
11. If the video quality pop-up message appears, choose the desired response.
12. The Endurance FTvirtual Server Desktop window will be displayed in the top left corner of the CoServer desktop with the text **Endurance FTvirtual Server Offline**.
13. The message **Do you want to create a virtual disk for use as the FTvirtual Server boot disk?** is displayed. You should select the same response that was given during CoServer 1 installation by clicking the appropriate button.

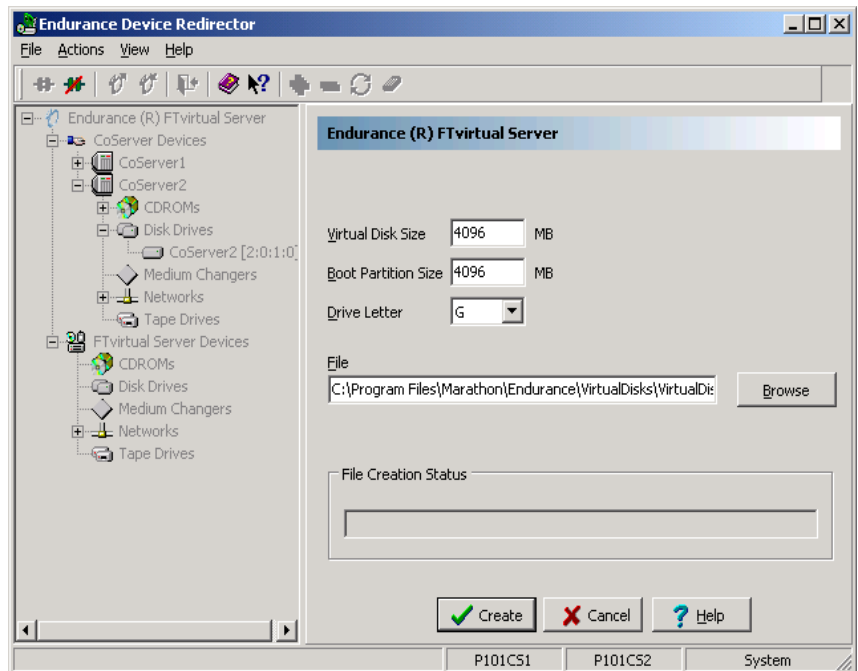
If you select **No**, the installation will continue with installing Windows and configuring FTvirtual Server. Skip ahead to the Installing Windows on and Configuring the FTvirtual Server section.

If you select **Yes** the **Device Redirector Connections** dialog is displayed.

- Click **OK** if both CoServer names are displayed.
- If both CoServer names are not displayed:
 - Launch the Endurance Manager:
 - **Start → Programs → Marathon Endurance → Manager**
 - When both CoServers appear bright green in the CoServer View (**View → CoServer View**) showing that they are in the *Degraded* state, enter the name of the missing CoServer in the **Device Redirector Connections** dialogue box; and then click **OK**.

Create a Virtual Disk

- On the displayed Device Redirector dialog set:
 - The virtual disk size. The default is 4 gigabytes.
 - The boot partition size. Specify a size less than or equal to the virtual disk size. The default size is the virtual disk size.
 - A drive letter to use when you mount the virtual disk on CoServer 2. The default is the next available drive letter.
 - Location on CoServer 2 of the file that becomes the virtual disk.



- Click **Create** to create the virtual disk.

This may take a few minutes, depending on the size of the virtual disk. When the virtual disk is created, the Device Redirector displays a dialog showing the name of the file that was created, the SCSI ID of the newly created virtual disk, and the drive letter associated with the NTFS-formatted boot partition. Record this drive letter for later use during the FTvirtual Server installation.

- Click **OK**.

The Device Redirector prompts you to prepare the FTvirtual Server disk for the FTvirtual Server part of the installation. Click **Yes** in response to the **Do you want to configure the FTvirtual Server boot disk now?** prompt.

- Proceed to step 3 of the next section to configure the FTvirtual Server boot disk.

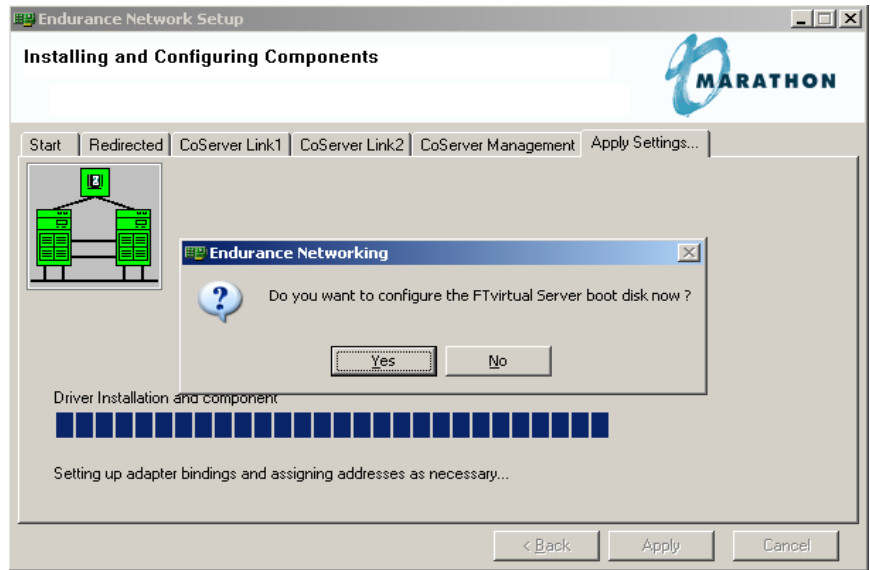
Installing Windows on and Configuring the FTvirtual Server

Select CoServer Devices for FTvirtual Server Use and Configure the FTvirtual Server Disk

1. If the **Device Redirector Connection** dialog box is displayed, click **OK** if both CoServer names appear.

If both CoServer names do not appear:

- Launch the Endurance Manager (**Start** → **Programs** → **Marathon Endurance** → **Manager**).
 - When both CoServers appear bright green in the CoServer View (**View** → **CoServer View**) indicating that they are in a *Degraded* state, enter the name of the missing CoServer in the **Device Redirector Connection** dialog box; and then click **OK**.
2. The Device Redirector prompts you to prepare the FTvirtual Server disk for the FTvirtual Server part of the installation. Click **Yes** in response to the **Do you want to configure the FTvirtual Server boot disk now?** prompt.



3. Configure the FTvirtual Server boot disk by selecting a set of disks, one from each CoServer, and click **OK**.
4. A warning message is displayed if the sizes of the disks are not equal. The FTvirtual Server software has to be installed on the CoServer that contains the smaller disk.

Click **Yes** to continue the installation. The excess disk space on the larger disk will not be utilized.

Click **No** if you did not intend to have mismatched drive sizes, and return to step 3.

5. If your CoServer has any other disk drives that you want to redirect to the FTvirtual Server, right click on **Disk Drives**, and then select **Add**. Select a set of disks, one disk from each CoServer, and click **OK**. The Device Redirector checks the sizes of the disks you selected. A warning message is displayed if the sizes of the disks are not equal.

Click **Yes** to continue the installation.

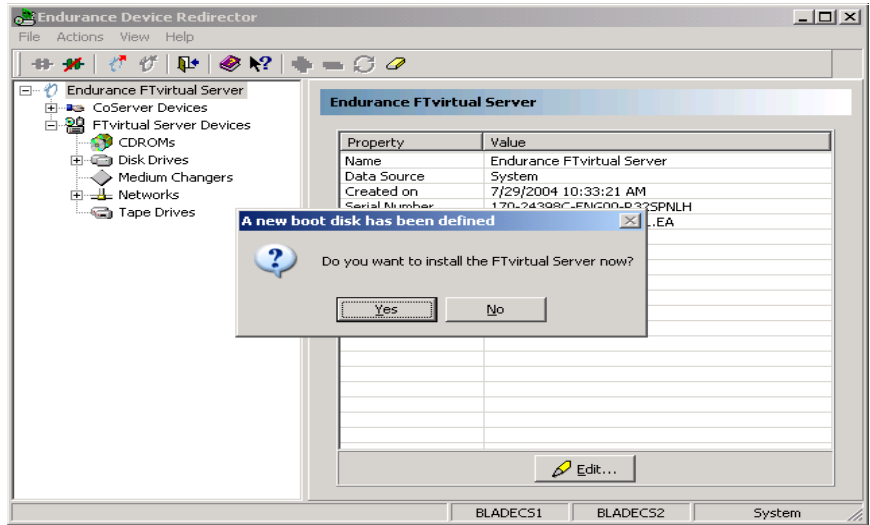
Click **No** if you did not intend to have mismatched drive sizes, and repeat step 5.

Repeat this step for each FTvirtual Server disk drive that you wish to redirect.

The Endurance Device Redirector runs on CoServer 2, and the redirected network adapters have been automatically configured.

Note: You cannot redirect the CDROM on the IBM eServer BladeCenter because the CDROM is shared across all blades and controlled by a built in USB switch. Install Windows on and configure the FTvirtual Server Boot disk following the prompts.

6. From the **File** menu select **Write Device Settings**, and then **OK** on the **Device Settings Saved** window.
7. Exit the Endurance Device Redirector.
8. Click **Yes** in response to the prompt **Do you want to install the FTvirtual Server now?**



The **Install Wizard for Endurance Windows Preparation** will be displayed.

Install Windows on the FTvirtual Server Disk

1. Follow the prompts through the **Welcome**, **License Agreement**, and **Information** dialogs, to the **Customer Information** dialog. Type a user name and company name and then click **Next**.
2. On the **Windows Installation** window:
 - Type the information requested including the Destination drive which is the FTvirtual Server boot drive. You should specify the drive letter that you recorded when formatting and partitioning the physical FTvirtual Server boot drive or when you created the FTvirtual Server boot disk.
 - Select **Install SNMP** if you want to run the Endurance SNMP Extension Agent to export management information through SNMP.
 - Click **NEXT**.
3. Verify the information on the **Check Setup Information** window and click **NEXT**.
4. Remove the Endurance CD.
5. You are prompted for the Windows distribution media, either the Windows CD or the location of the Windows files.

If the Windows distribution media is on a CD, insert the Windows CD.

If a Windows auto-play page appears, select **Take no action** and click **OK**.

If a Windows installation dialogue appears, exit it.

6. Browse to the appropriate \i386 folder. Select the folder and click **OK**.

Select the same Windows release with the appropriate slip streamed Service Pack as is installed on the CoServers.

-
-
7. A progress bar shows the files being copied to the FTvirtual Server boot drive. This may take several minutes. When the installation completes, remove the Windows CD if it is in the drive.
 8. Click **Yes** in response to the prompt, **Both CoServers must be rebooted. Proceed?**

Finish the Windows Installation

1. To monitor the installation, after the CoServers reboot, log in as Administrator on either CoServer.

The FTvirtual Server Desktop appears.

2. Allow the installation to progress.
 - Ensure that the Endurance taskbar icon appears.
 - Text mode setup starts and displays a progress bar showing Windows being installed on the FTvirtual Server. Text mode setup completes, and the FTvirtual Server restarts.
 - GUI mode setup starts and displays the standard Windows installation on the FTvirtual Server Desktop. GUI mode setup completes, and the FTvirtual Server restarts.
 - If the installation prompts you, enter the requested information.

Install the Endurance FTvirtual Server Software

The Endurance FTvirtual Server installation starts.

1. Follow the prompts through the **Welcome**, **License Agreement**, and **Information** dialogs to the **Select Features** window.
2. In the **Select Features** window, choose the components you want.
 - Select **Basic Product**, the default.
 - If you selected **SNMP** when you installed Windows on the FTvirtual Server, the SNMP Agent box is checked.
 - Click **Next**.
 - If the **SNMP Service in Use** window appears, click **Yes**.

Specify the Location of the Software

1. On the **Choose Destination Location** window, save the files in the default location `C:\Program Files\Marathon\Endurance` or specify another location.
2. On the **Confirm New Folder** window, click **Yes**.
3. Verify the information on the **Check Setup Information** window and then click **Next**.

Finish the FTvirtual Server Installation

1. The Endurance Network Setup wizard starts and configures the FTvirtual Server network adapters. Click **Exit**.

On Windows 2003 Service Pack 1, a Windows Security Alert may appear indicating that the Windows Firewall has blocked some features of the Endurance Taskbar Notification Icon. Click **Unblock** on this dialogue to allow operation of the taskbar icon. Also on Windows 2003 Service Pack 1, a Windows Security dialog may appear. Ignore this window at this time, it will be displayed again by Windows after the next reboot.

The pop-up message **The FTvirtual Server must be restarted to complete the installation.** is displayed. Click **Yes** in response to the **Restart Now?** prompt, and the FTvirtual Server is restarted.

2. After the FTvirtual Server restarts, login using the FTvirtual Server desktop.

On Windows 2003, if the **Manage Your Server** window appears, click **Don't display this page at logon**, and then dismiss the window.

On Windows 2000, if the **Configure Your Server** window appears, click **I will configure this server later**, and then dismiss the window.

Optionally, set the FTvirtual Server resolution to 1024x768.

On the FTvirtual Server desktop, right click and select **Properties** → **Settings** → **Advanced**. Click the **Adapter** tab and then **List All Modes**. Select the resolution.

3. Optionally, set the FTvirtual Server Desktop to **Full Screen Mode**, click on the title bar of the FTvirtual Server Desktop, and select the option **Full Screen Mode**.

To shift the input focus between the CoServer and the FTvirtual Server, press the default hot key sequence: **Ctrl/Shift/F12**.

At any time that you are running the FTvirtual Server, you can check whether your input is directed to the CoServer or the FTvirtual Server Desktop. If the Scroll Lock indicator on your keyboard is blinking, the focus is the CoServer. If it is not blinking, the focus is the FTvirtual Server Desktop.

Verifying the FTvirtual Server Installation

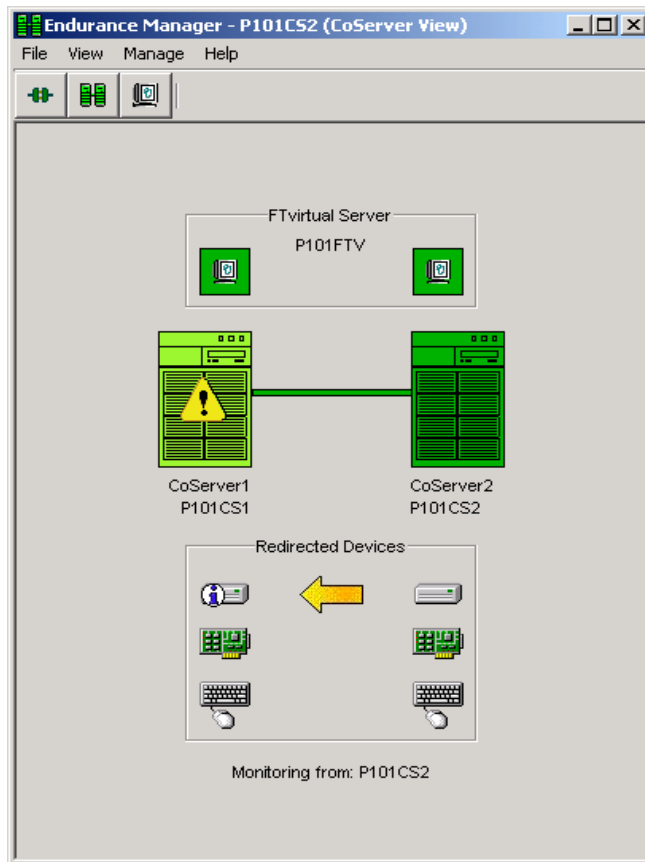
Verify the installation of the Endurance FTvirtual Server:

1. From the FTvirtual Server Desktop, launch the Endurance Manager.

The Endurance Manager starts in the FTvirtual Server view.

2. From the menu bar of the Endurance Manager, select **View → CoServer View**.

The CoServer View shown on the following page displays the two CoServers with a yellow arrow between the two disks, illustrating that data on one CoServer are being copied to the other CoServer. When the copying process is completed, the arrow disappears, the installation is complete, and the components appear green.



What to do Next

The Endurance software installation for this set of CoServers and setup of the FTvirtual Server is now complete. If you have additional blade pairs to setup return to the Installing Windows on the CoServer section at the beginning of this chapter.

For more information about using the FTvirtual Server, read *Getting Started with Endurance FTvirtual Server* and the *Endurance FTvirtual Server Administrator's Guide*.

Free Manuals Download Website

<http://myh66.com>

<http://usermanuals.us>

<http://www.somanuals.com>

<http://www.4manuals.cc>

<http://www.manual-lib.com>

<http://www.404manual.com>

<http://www.luxmanual.com>

<http://aubethermostatmanual.com>

Golf course search by state

<http://golfingnear.com>

Email search by domain

<http://emailbydomain.com>

Auto manuals search

<http://auto.somanuals.com>

TV manuals search

<http://tv.somanuals.com>