

LOWRANCE®



Elite 5X, Mark 5X, Mark 5X Pro & Elite 4X

Operation manual

Download from [Www.Somanuals.com](http://www.Somanuals.com). All Manuals Search And Download.

**Copyright © 2011 Navico
All rights reserved.**







Lowrance® and Navico® are registered trademarks of Navico.

Navico may find it necessary to change or end our policies, regulations and special offers at any time. We reserve the right to do so without notice. All features and specifications subject to change without notice.

**Visit our website:
www.lowrance.com**

Introduction	2	Trackback	11
Basic Operation	3	Sensitivity	12
Setup wizard.....	3	Colorline/Grayscale	12
Working with menus	4	Depth Range	13
Fishing Mode	5	Frequency	14
Cursor.....	6	Ping Speed (Advanced Mode only).....	14
Advanced Mode	6	Sonar Options.....	14
Standby mode	7	Settings	17
Restore defaults	7	System.....	17
Pages	8	Sonar	19
Sonar Page.....	8	Surface Clutter.....	19
Split Frequency.....	8	Installation	20
Split Zoom	9	Alarms	21
Overlay Data.....	9	Index	22
Using your Sonar	11	Specifications	23

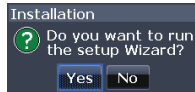
Introduction

Unit Controls	
	LIGHT/POWER: controls backlight level and turns unit on/off
	KEYPAD: controls cursor & selects items on menus
	PAGES: allows you to select a page to view
	MENU: opens settings, context and page menus
	ENTER: finalizes menu selections; save waypoint at cursor position
	ZOOM Keys: used to zoom in/zoom out

Getting Started	
Turn unit on/off	To turn on/off the unit, press and hold the LIGHT/POWER key for three seconds.
Adjusting the backlight	This unit has 10 backlight levels. Press the LIGHT/POWER key to switch backlight levels.
Muting Audio	Select Mute Audio from the System menu and press ENTER .

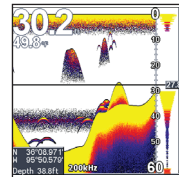
Setup wizard

The Setup wizard will appear when the unit is turned on for the first time. To choose your own settings, do not run the setup wizard.

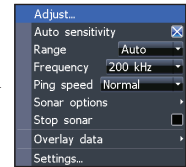


To restart the Setup wizard, restore defaults.

Accessing Sonar menu



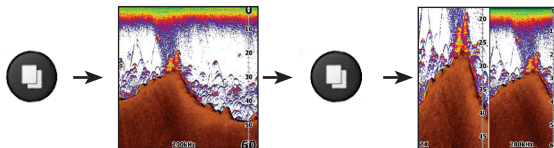
Sonar Page



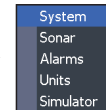
Sonar menu

Pages

This unit has three pages: Sonar, Split Frequency and Split Zoom.



Accessing the Settings menu

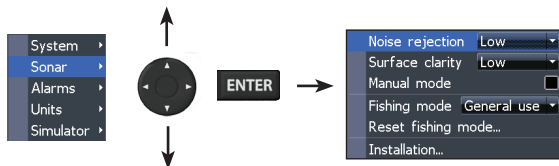


Settings menu

Basic Operation

Accessing menu items

The keypad and **ENTER** key are used to select menu items and open submenus. Use the keypad to highlight the desired item and press **ENTER**.



Working with menus

There are several menu types used to make adjustments to options and settings, including scrollbars, on/off features and dropdown menus.

Scrollbars

Select the scrollbar and press the keypad left (decrease) or right (increase).



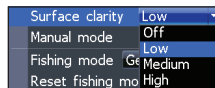
On/Off features

Select an on/off menu item and press **ENTER** to turn it on/off.



Dropdown menus

After accessing the dropdown menu, press the keypad up/down to select the desired item and press **ENTER**.

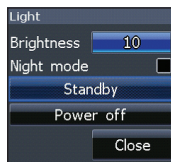


NOTE: Press the **MENU** key to Exit menus.

Dialogs

Dialogs are used for user input or for presenting information to the user.

Depending on the type of information or entry, different methods are used to confirm, cancel or close the dialog.

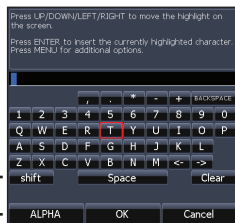


Entering text

Some functions, like naming a waypoint, route or trail, will require you to input text.

Switches letters to uppercase/lowercase

Switches keyboard between Alpha and QWERTY layout

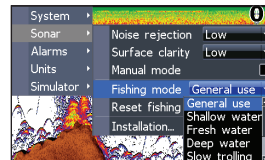


To input text:

1. Use the keypad to select the desired character and press **ENTER**.
2. Repeat Step 1 for each character.
3. When entry is completed, highlight **OK** and press **ENTER**.

Fishing Mode

Fishing modes enhance the performance of your unit by providing preset packages of sonar settings geared to specific fishing conditions.



NOTE: Use Fresh Water mode when fishing in less than 100 feet of water; otherwise your unit may not track bottom properly.

Basic Operation

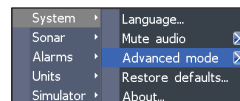
Fishing Mode Options	
General Use	Bottom brown/white background; 50% ping speed
Shallow Water	Bottom brown/white background
Fresh Water	Bottom brown/white background; 50% ping speed
Deep Water	Deep Blue; 50% ping speed; 50kHz is primary transducer frequency
Slow Trolling	Bottom brown/white background; 50% ping speed
Fast Trolling	Bottom brown/white background; slightly lower chart speed
Clear Water	Bottom brown/white background; 50% ping speed
Brackish Water	Bottom brown/blue background; higher ASP; slightly lower chart speed

Cursor

The keypad moves the cursor on the display and allows you to review Sonar history. Press **MENU** and select *Exit cursor mode* to clear the cursor.

Advanced Mode

Enables advanced features and settings.



The following features are enabled when Advanced mode is turned on:

- Colorline (manual control)
- Surface Clarity (manual control)
- Ping Rate (manual control)
- Units (Enables distance, speed, depth and temperature options)

Standby mode

Lowers power consumption by turning off sonar and the display.

Press the **PWR/LIGHT** key to access the Backlight menu. Select **Standby** and press **ENTER**.

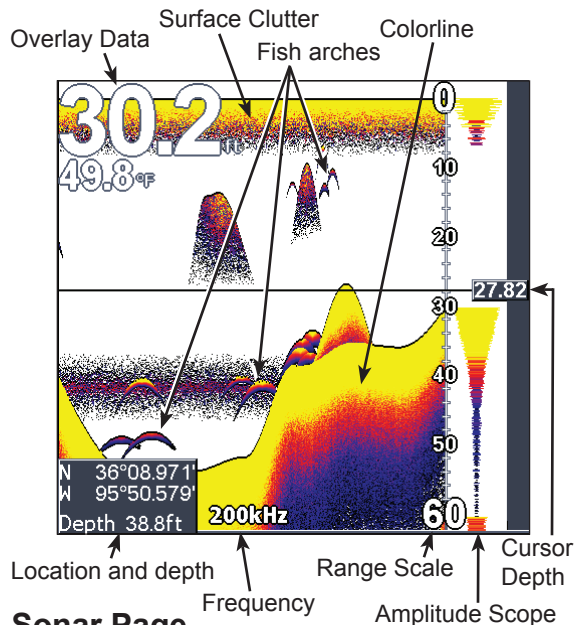
Press any key to resume normal operation.



NOTE: *Leaving your unit in Standby mode when your boat is not in use will run down your battery.*

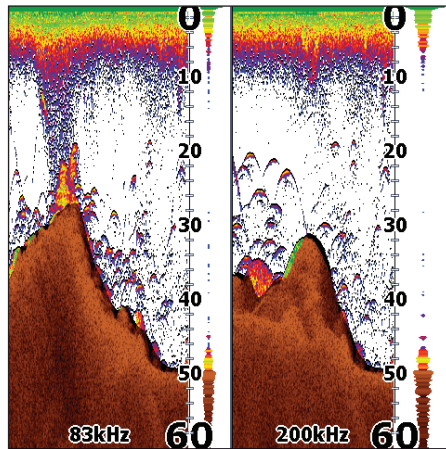
Restore defaults

Resets unit options and settings to defaults.



Sonar Page

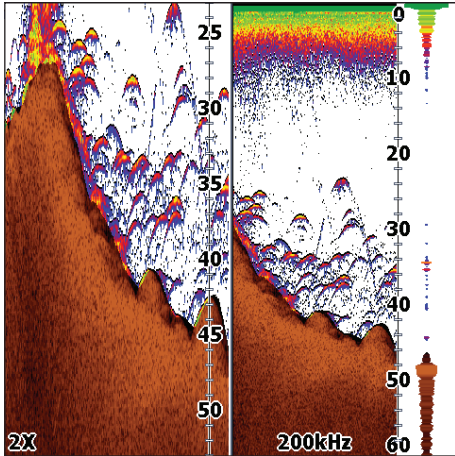
Displays the water column moving from right to left on your unit's screen. On the right side of the screen, the Amplitude Scope bar previews echoes about to appear on the display.



Split Frequency page

Split Frequency

Displays both transducer frequencies at the same time. 83 kHz has a wider cone angle for greater water coverage, while 200 kHz has the highest sensitivity and best target discrimination in shallow water. (Does not apply to the Mark 5X.)



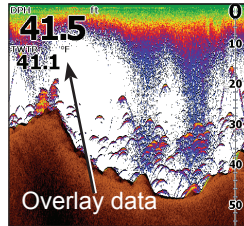
Split Zoom

Split Zoom

Allows you to zoom in for a closer look without losing your view of the water column.

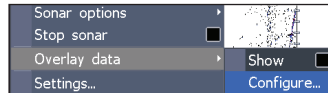
Overlay Data

Displays selected overlay data on the sonar page.



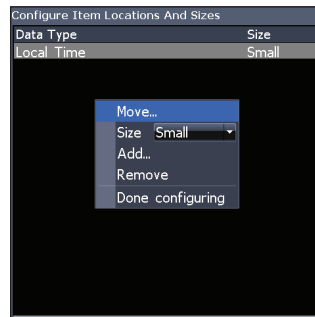
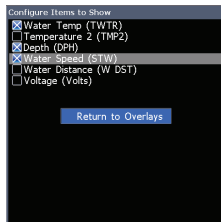
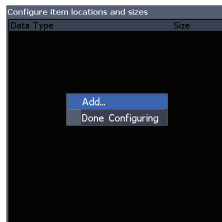
Show

Enables/disables the display of overlay data, allowing you to remove overlay data from the screen without deleting the selected overlay data configuration.



Configure

Used to select overlay data to be displayed on the screen.



To select overlay data:

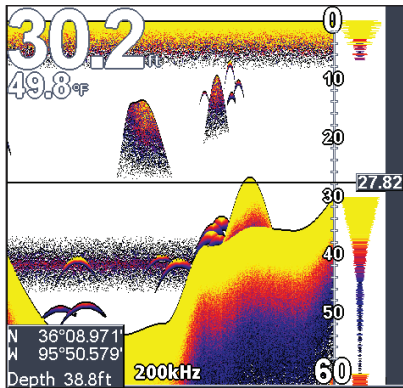
1. From the sonar page, press **MENU**.
2. Select *Overlay data* and press **ENTER**.
3. Select *Configure* and press **ENTER**.
4. Press *Menu* and select *Add*. Press **ENTER**.
5. Select the desired data from the Configure Items to show screen. Press **ENTER**.
6. Press **MENU** and select *Return to overlays*.
7. Press **MENU**, select *Done Configuring* and press **ENTER**.

Customizing Overlay Data

Access the Overlay Data configuration menu to make adjustments to the size and/or location of overlay data on the display.

Press Menu from the Configure Item Locations and Sizes screen to access the menu.

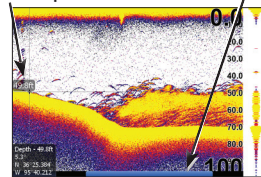
Using your Sonar



Trackback

You can review your recent sonar history by moving the cursor to the left until the screen starts to move in reverse.

Cursor depth Blue sonar history bar

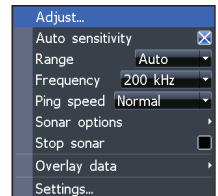


Move the blue sonar history bar all the way to the right to resume normal sonar scrolling.

Press **MENU** and select *Exit cursor mode* to remove the cursor from the screen.

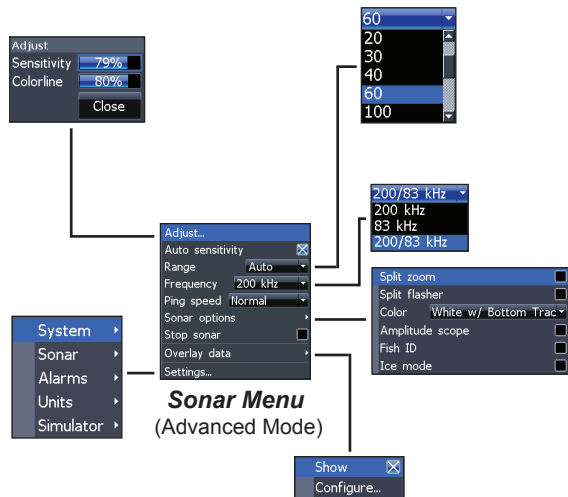
Sonar Menu

The sonar menu has options and settings that affect the appearance of the display.



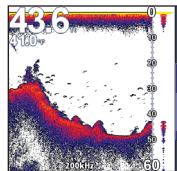
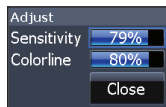
Sonar

Press **MENU** from any sonar page to access the Sonar menu.

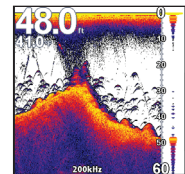


Adjust (Advanced Mode only)

Used to make adjustments to Sensitivity, Colorline and Grayline.



Sensitivity set to 65 percent.



Sensitivity set to 85 percent.

Sensitivity

Controls the level of detail shown on the display. Too much detail will clutter the screen. If Sensitivity is set too low, desired echoes may not be displayed.

Colorline/Grayscale

Separates strong sonar echoes from weak sonar echoes. That makes it easier for you to distinguish fish or structure from the bottom. A hard return will be shown as a wide, bright yellow area, whereas a soft return will be a narrow reddish-blue area.

Mark series units have a monochrome display, so wide bands of gray indicate a hard sonar return, while softer returns are shown as dark, narrow areas.

Auto Sensitivity

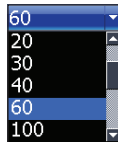
Keeps sensitivity at a level that works well under most conditions, reducing the needs for adjustments. Auto Sensitivity is turned on by default.



NOTE: You can make minor (+/-4%) changes to sensitivity with Auto Sensitivity turned on. You will have to turn it off to make significant adjustments.

Depth Range

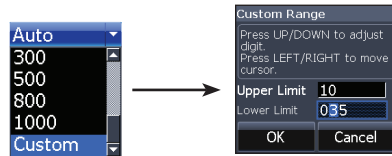
Selects the deepest range shown on the display. Range settings display the section of the water column from the water surface to the selected depth



range. If you select too shallow a depth range the unit will not be able to lock onto the bottom.

Custom Range — Upper and Lower Limits (Advanced Mode only)

Used to select the upper limit and lower limit of a section of the water column. That allows you to view a section of the water column that does not include the water surface. Upper and lower limits must be at least 6.5 ft (2m) apart.



Custom range menu



NOTE: When using a custom range, you may not receive any digital depth readings, or you may receive incorrect depth information.

Sonar

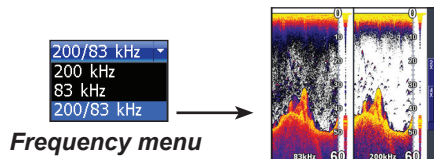
Frequency

Controls the transducer frequency used by the unit. This unit supports two frequencies: 200kHz and 83kHz.

200 kHz has the highest sensitivity and best target discrimination in shallow water. 83 kHz offers a wider cone angle for more water coverage. The Mark 5X only supports the 200kHz transducer frequency.

Ping Speed (Advanced Mode only)

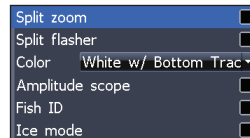
Controls the rate the transducer uses to send sonar waves into the water. Ping speed adjustments can help reduce interference from other transducers.



When using fishing modes, ping speed settings are optimized for the selected fishing conditions, so in most cases, adjustments are not necessary.

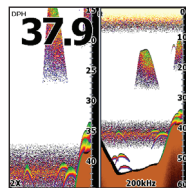
Sonar Options

Accesses sonar display settings and configuration options.

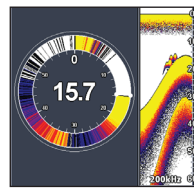


Split Zoom and Split Flasher

Switches the sonar display from full screen sonar to a split screen view.



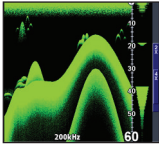
Split Zoom



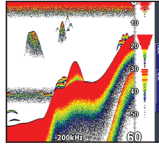
Split Flasher

Color

Allow you to change the look of the display using palettes with varying degrees of color/brightness.



Nightview

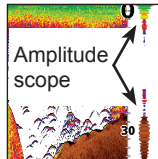


Iceview

Monochrome units support Grayscale, Reverse Grayscale and Bottom Black.

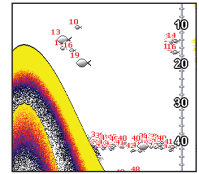
Amplitude Scope

Displays the amplitude of real-time echoes before they appear on the display.



Fish ID

Displays fish echoes as fish symbols instead of fish arches. Fish ID is not the most accurate method of fish detection since structure and suspended debris may be shown as a fish symbol on the display.



Ice Mode

Turns on a package of sonar settings optimized for ice fishing and also overlays battery meter data on the screen.

Stop Sonar

Pauses the sonar chart, allowing you to get a closer look at suspended targets.

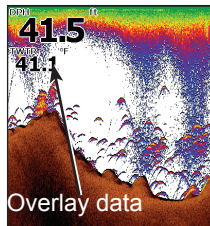
Stop Sonar also can be used to prevent/stop interference between two units running on the same boat at the same time.

Sonar

Overlay Data

Allows you to select data (water temperature, depth, etc) to be displayed on top of the Sonar screen.

Overlay data setup is covered in the Pages section.

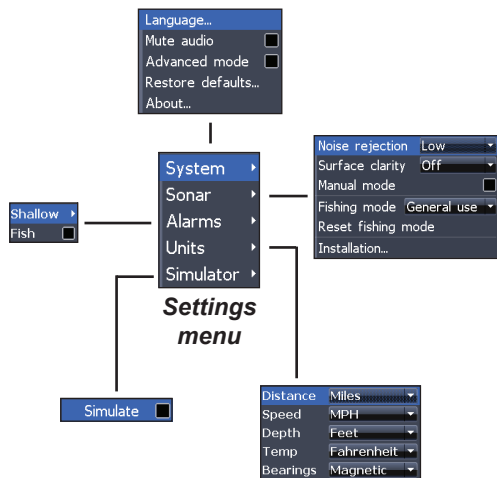


Settings

Accesses the Sonar settings menu.

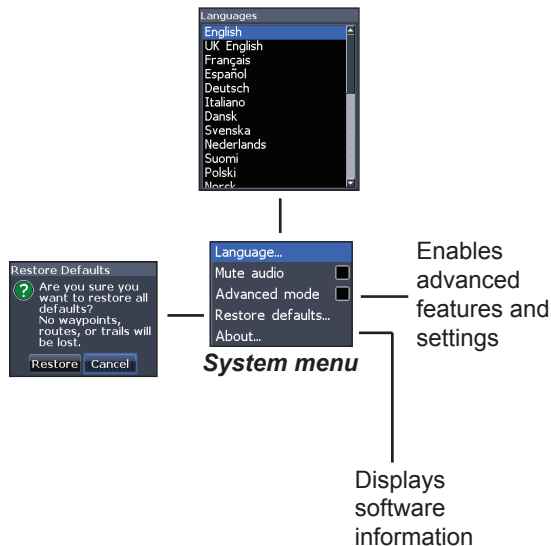
Settings Menu

Accesses to installation and configuration settings for your unit.



System

Adjusts unit settings like language, mute audio and advanced mode.



Settings

Set Language

Selects the language used on menus and text boxes.

Mute Audio

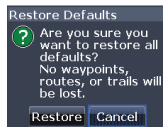
Turns on/off unit audio, like key beeps, alarm sounds, etc.

Advanced Mode

Enables features and settings only available with unit in Advanced Mode.

Restore Defaults

Switches the unit back to default settings.



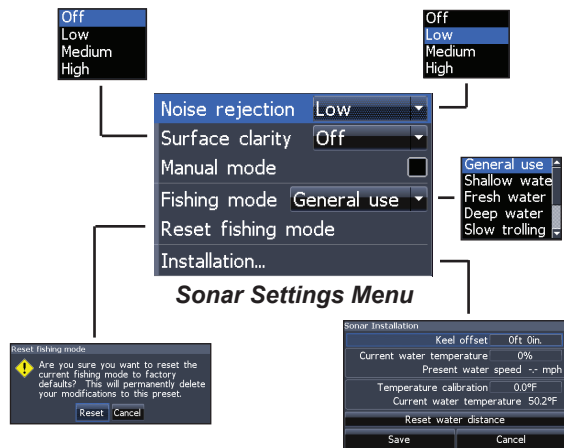
About

Displays software information about this unit. Before attempting a software update, you can check the version of software your unit is using by accessing the About screen.

Lowrance periodically updates unit software to add features and improve functionality. To see the latest available software version go to www.lowrance.com.

Sonar

Used to make adjustments to Sonar options and display settings like Noise Rejection, Surface and Fishing Mode.

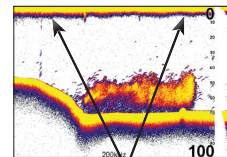


Noise Rejection

Uses advanced signal processing to monitor the effects noise (boat pumps, water conditions, engine ignition systems, etc.) has on your display, and then filters out the undesired signals.

Surface Clarity (Advanced Mode only)

Surface Clarity reduces surface clutter by decreasing the sensitivity of the receiver near the surface.



Surface Clutter

Manual Mode

Restricts digital depth capability, so the unit will only send sonar signals to the selected depth range. That allows the display scroll smoothly if the bottom depth is out of transducer range.

Settings

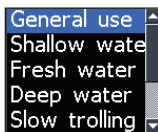


WARNING: Manual mode should only be used by advanced sonar users.

When the unit is in manual mode, you may not receive any depth readings, or you may receive incorrect depth information.

Fishing Mode

Enhances the performance of your unit by providing preset packages of sonar settings geared to specific fishing conditions. For more information about fishing modes, refer to the Basic Operation section.

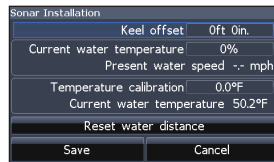


Reset Fishing Mode

Resets selected fishing mode to default settings. That is useful when you want to clear settings adjustments made while using a fishing mode.

Installation

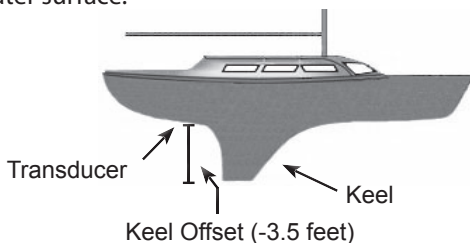
Provides access to Keel Offset and Temp Calibration settings.



Installation menu

Keel Offset

All transducers measure water depth from the transducer to the bottom. As a result, water depth readings do not account for the distance from the transducer to the keel or from the transducer to the water surface.



Before setting keel offset, measure the distance from the transducer to the lowest part of the keel. If, for example, the keel is 3.5 feet below the transducer, it will be input as -3.5 feet.

Temperature calibration

Calibrates data from the transducer temperature sensor with data from a known temperature source to ensure the accuracy of temperature information.

Reset water distance

Reset Water Distance to zero.

Alarms

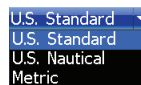
Enables alarms and selects alarm thresholds. Arrival, Off Course and Anchor alarms are only available in Advanced mode.



Alarms	
Shallow	sounds alarm when vessel enters water shallower than the selected shallow threshold
Fish	sounds alarm when a fish symbol (Fish ID) appears on the sonar screen

Units

Allows you to select the unit of measure used by the unit. Unit options vary depending on whether the unit is in basic or advanced mode.



Basic Mode



Advanced Mode

Simulator

Simulates on-the-water sonar activity.

- A**
 - About 18
 - Advanced Mode 6
 - Alarms 21
 - Fish 21
 - Shallow 21
 - Amplitude Scope 15
 - Auto Sensitivity 13
- C**
 - Color 15
 - Colorline 12
 - Cursor 6
 - Custom Range 13
- D**
 - Depth Range 13
 - Dialogs 5
 - Dropdown menus 4
- F**
 - Fish alarm 21
 - Fish ID 15
- I**
 - Fishing Mode 5
 - Frequency 13
- K**
 - Keel Offset 20
- L**
 - Language 18
- M**
 - Manual Mode 19
 - Mute Audio 18
- N**
 - Noise Rejection 19
- O**
 - On/Off features 4
- P**
 - Overlay Data , 9
 - Configure 9
 - Customizing 10
 - Show 9
 - Ping Speed 14
- R**
 - Range 13
 - Reset Fishing Mode 20
 - Reset water distance 21
 - Restore defaults 7
- S**
 - Scrollbars 4
 - Sensitivity 12
 - Settings Menu 17
 - Setup wizard 3
 - Shallow alarm 21
 - Simulator 21
 - Software update 18
 - Sonar
 - Adjust 12
 - Sonar Installation 20
 - Sonar Menu 11
 - Sonar Options 14
 - Sonar Page 8
 - Sonar settings 19
 - Split Flasher 14
 - Split Frequency 8
 - Split Zoom 9, 14
 - Standby mode 7
 - Stop Sonar 15
 - Surface Clarity 19
 - System settings 17
- T**
 - Temperature calibration 21
 - Text entry 5
 - Trackback 11
- U**
 - Units 21
 - Upper and Lower Limits 13

Specifications

Elite 5x, Mark 5x & Mark 5x Pro	
General	
Case size	5.4" H (134mm) x 6.8" W (174mm); 6" H (152mm) with bracket
Display	Mark: (5" diagonal) High-contrast film Supertwist LCD; 16-level grayscale definition; 480x480 monochrome Elite: (5" diagonal) Enhanced Solar MAX™ 480x480 color
Backlight	Mark: White LED Elite: Cold cathode fluorescent lamp (10 levels)
Power	
Transmit power	Mark 5x: 1600W PTP 200W RMS Mark 5x Pro: 2400W PTP; 300 RMS Elite 5x: 4000 PTP; 500W RMS
Power requirement	12V
Voltage input	10 to 17V
Current drain	Typical: .25A
Fuse type	3 amp automotive (not supplied)

Sonar	
Max depth	Mark 5x: 800ft (244m) Mark 5x Pro/Elite 5x: 1000ft (305m)
Transducer frequency	Mark 5x: 200kHz Mark 5x Pro/Elite 5x: 83/200kHz
Max speed	70mph
Transducer	Skimmer with built in temp sensor
Transducer cable	20 feet (6m)

Specifications

Elite 4x	
General	
Case size	5.6" H (144mm) x 3.7" W (94.3mm); 6.4" H (164mm) with bracket
Display	(3.5" diagonal) 320x240 (256 color) TFT LCD
Backlight	White LED (10 levels)
Power	
Transmit power	2100W PTP; 262W RMS
Power requirement	12V
Voltage input	10 to 17V
Current drain	at 13.5V (200mA)
Fuse type	3 amp automotive (not supplied)

Sonar	
Max depth	1000ft (305m)
Transducer frequency	83/200kHz
Max speed	70mph
Transducer	Skimmer with built in temp sensor
Transducer cable	20 feet (6m)

How to Obtain Service... ...in the USA:

Contact the Factory Customer Service Department. Call toll-free:

800-324-1356

8 a.m. to 5 p.m. Central Standard Time, M-F

Navico may find it necessary to change or end shipping policies, regulations and special offers at any time. They reserve the right to do so without notice.

...in Canada:

Contact the Factory Customer Service Department. Call toll-free:

800-661-3983

905-629-1614 (not toll-free)

8 a.m. to 5 p.m. Eastern Standard Time, M-F

...outside Canada and the USA:

Contact the dealer in the country where you purchased your unit. To locate a dealer near you, see the instructions in paragraph number 1 below.

Accessory Ordering Information

LEI Extras is the accessory source for sonar and GPS products manufactured by Lowrance Electronics. To order Lowrance accessories, please contact:

- 1)** Your local marine dealer or consumer electronics store. To locate a Lowrance dealer, visit the web site, www.lowrance.com, and look for the Dealer Locator; or, consult your telephone directory for listings.
- 2)** U.S. customers visit our web site www.lei-extras.com.
- 3)** Canadian customers: Lowrance Canada, 919 Matheson Blvd. E. Mississauga, Ontario L4W2R7 or fax 905-629-3118. Call toll free in Canada, 800-661-3983, or dial 905 629-1614 (not toll free), 8 a.m. to 5 p.m. Eastern Standard Time, M-F.

Visit our website:

www.lowrance.com



© Copyright 2011
All Rights Reserved
Navico Holding AS

Free Manuals Download Website

<http://myh66.com>

<http://usermanuals.us>

<http://www.somanuals.com>

<http://www.4manuals.cc>

<http://www.manual-lib.com>

<http://www.404manual.com>

<http://www.luxmanual.com>

<http://aubethermostatmanual.com>

Golf course search by state

<http://golfingnear.com>

Email search by domain

<http://emailbydomain.com>

Auto manuals search

<http://auto.somanuals.com>

TV manuals search

<http://tv.somanuals.com>