

EtherFast® Series

Instant GigaCD Server



Use this guide to install: EFVCD20

User Guide

 **LINKSYS**™

COPYRIGHT & TRADEMARKS

Copyright © 2000 Linksys, All Rights Reserved. EtherFast is a registered trademark of Linksys. Microsoft, Windows, and the Windows logo are registered trademarks of Microsoft Corporation. All other trademarks and brand names are the property of their respective proprietors.

LIMITED WARRANTY

Linksys guarantees that every EtherFast Instant GigaCD Server is free from physical defects in material and workmanship under normal use for one year from the date of purchase. If the product proves defective during this warranty period, call Linksys Customer Support in order to obtain a Return Authorization Number. **BE SURE TO HAVE YOUR PROOF OF PURCHASE AND A BARCODE FROM THE PRODUCT'S PACKAGING ON HAND WHEN CALLING. RETURN REQUESTS CANNOT BE PROCESSED WITHOUT PROOF OF PURCHASE.** When returning a product, mark the Return Authorization Number clearly on the outside of the package and include your original proof of purchase. All customers located outside of the United States of America and Canada shall be held responsible for shipping and handling charges.

IN NO EVENT SHALL LINKSYS' LIABILITY EXCEED THE PRICE PAID FOR THE PRODUCT FROM DIRECT, INDIRECT, SPECIAL, INCIDENTAL, OR CONSEQUENTIAL DAMAGES RESULTING FROM THE USE OF THE PRODUCT, ITS ACCOMPANYING SOFTWARE, OR ITS DOCUMENTATION. LINKSYS DOES NOT OFFER REFUNDS FOR ANY PRODUCT. Linksys makes no warranty or representation, expressed, implied, or statutory, with respect to its products or the contents or use of this documentation and all accompanying software, and specifically disclaims its quality, performance, merchantability, or fitness for any particular purpose. Linksys reserves the right to revise or update its products, software, or documentation without obligation to notify any individual or entity. Please direct all inquiries to:

Linksys P.O. Box 18558, Irvine, CA 92623.

FCC STATEMENT

This EtherFast Instant GigaCD Server has been tested and complies with the specifications for a Class B digital device, pursuant to Part 15 of the FCC Rules. These limits are designed to provide reasonable protection against harmful interference in a residential installation. This equipment generates, uses, and can radiate radio frequency energy and, if not installed and used according to the instructions, may cause harmful interference to radio communications. However, there is no guarantee that interference will not occur in a particular installation. If this equipment does cause harmful interference to radio or television reception, which is found by turning the equipment off and on, the user is encouraged to try to correct the interference by one or more of the following measures:

- Reorient or relocate the receiving antenna
- Increase the separation between the equipment or device
- Connect the equipment to an outlet other than the receiver's
- Consult a dealer or an experienced radio/TV technician for assistance

008

Table of Contents

Introduction	1
The Linksys EtherFast Instant GigaCD Server	1
Features	1
Package Contents	2
System Requirements	2
Getting to Know the EtherFast Instant GigaCD Server	3
The Instant GigaCD Server's Rear Panel	3
The Instant GigaCD Server's Front Panel	4
The Buzzer	6
Connecting The EtherFast Instant GigaCD Server to Your Network	7
Installing Your Instant GigaCD Server	7
Installing and Configuring the Setup Software	7
Using The EtherFast Instant GigaCD Server	11
Server Administration	11
Password	12
System	12
Network	16
Utility	19
Status	21
Managing Your CD Images	24
Overview	24
Creating an Image File	24
Locating an Image File	25
Windows Client Setup	26
Overview	26
TCP/IP setup	26
Troubleshooting	28
Appendix	30

Introduction

The Linksys EtherFast Instant GigaCD Server

With 20 gigabytes of storage space, the Instant GigaCD Server can save valuable time and space by sharing your favorite CD-ROMs. Faster and less cumbersome than a standard CD-ROM jukebox, the Instant GigaCD Server allows your CD-ROM data to become simultaneously available to multiple network users. Upload frequently-used CDs, graphic storage CDs, standard audio CDs, games, or any other high-demand CD and avoid having to locate it or swap it out with a co-worker.

You don't have a CD-ROM drive installed on your network PC? No problem. Just access the Instant GigaCD Server and use the CD data there. Configurable from your web browser and accessible from your Network Neighborhood, the EtherFast Instant GigaCD Server saves time, money and valuable workstation space.

Features

- Shared Access to CD-ROM Titles Through Your Network
- Run CD-ROM Applications Without an Actual CD-ROM Drive
- Sits On Your Network Like a Regular Computer
- Stores Up to 30 Full-length CD-ROMs
- Self-Maintenance Feature Preserves Data Integrity and Accuracy
- Supports All Audio CD Formats
- Remote Device Monitoring and Shut-Down Features
- Allows Updating of the Firmware from Any PCs on the Network
- Can Act as a DHCP Server or Client



Package Contents

- Linksys EtherFast Instant GigaCD Server
- UTP Network Cable
- Power Cord
- Setup CD-ROM
- User Guide and Registration Card

System Requirements

- One PC with an installed 10Mbps, 100Mbps, or 10/100 Mbps Ethernet card
- TCP/IP network protocol for each PC
- Microsoft Internet Explorer or Netscape Navigator, or compatible browser, versions 4.0 or later.

Getting to Know the EtherFast Instant GigaCD Server

The Instant GigaCD Server's Rear Panel

The rear panel of the Server is where all of the Servers connections are made.



Power Switch

The power switch is a spring-loaded soft switch for turning the power to the Server on and off. If the Server is not powered on, pressing the power switch will initiate the Server's startup process. Pressing the power switch while the Server is turned on will begin the Server's internal shut-down process.

Power Port

The Power Port is where you will connect the included AC Power cord.

10/100BaseTX Port

Use this port to connect the Server to Your Network.

100BaseTX LED (amber)

This will illuminate when a successful 100BaseTX connection is made to Your Network through the 10/100BaseTX port.

- 10BaseT LED (green)** This will illuminate when a successful 10BaseT connection is made to Your Network through the 10/100BaseTX port.
- Reset IP/Password Button** If the Instant GigaCD Server's IP Address or password is lost, press and release this button. The Server will beep once to indicate that a new IP Address (192.168.0.2, with a Network Mask of 255.255.255.0) has been provided. This function will also clear the GigaCD's passwords and rights.
- Uplink Button** If the Server is going to be connected directly to a PC, make sure this button is pushed in. If, however, the Server is going to be connected to a network (normal operation), this button should not be pushed in.

The Instant GigaCD Server's Front Panel



Copy Button

This button is pressed to copy a CD to the hard disk, thus creating a virtual CD image. While copying, you may experience difficulty using the Server's other features and should wait until the Server has completed copying the image.

Copied CD images will be saved to the default AutoCab folder. You can change this folder in the Manager Utility, under the Configuration/System menu option.

Pressing the Copy button while copying an image will cancel the copying procedure.

The LAN Indicators

- Ready** Green. This will blink during Startup and Shutdown and turn off once completed. During a software upgrade, both the Ready and Error LEDs will blink.
- Error** Amber. This LED will blink during Startup. However, if it remains on, there is a hardware error. During a software upgrade, both the Ready and Error LEDs will blink.
- LAN** Green. While data is being sent or received over your network, this LED will flash.
- Disk** Green. This LED will flash whenever the hard drive is accessed.
- Disk Full** Green. This LED will normally be off. It will begin to blink to indicate that the hard drive is 98% full and remain on to indicate that the hard drive is completely full.
- Copy Error** Amber. This LED will normally be off. Should an error occur during the image copying procedure, this LED will remain on until the CD is ejected.

The Buzzer

You may hear the following beeps emit from the Server for the following reasons:

If you hear **one beep**, this means that the Reset IP/Password Button or Power Switch has been pressed.

If you hear **two beeps, repeated every five seconds for one minute**, this means that the Server is a DHCP client but no DHCP Server responded to the DHCP client request.

If you hear **three beeps, repeated every 15 seconds for three minutes**, this means the Server's Hard Disk is more than 98% full.

If you hear **five beeps, repeated every 15 seconds for three minutes**, this means the Server is overheating. The Server will automatically shut down three minutes after the first beep.

Connecting The EtherFast Instant GigaCD Server to Your Network

Installing Your Instant GigaCD Server

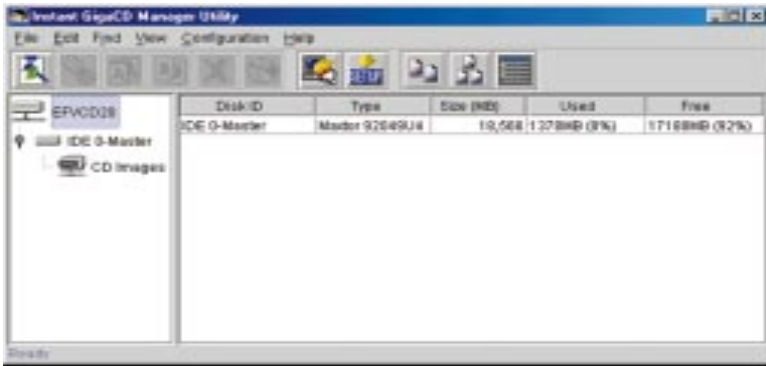
1. **Connect a Network Cable** from the RJ-45 port in the back of the Server to your Hub or Switch to which the Server will be connected. The Server will auto-sense a 10BaseT or 100BaseTX connection at full or half duplex.
2. **Connect your power** with the supplied power cable.
3. **Power on** the Instant GigaCD Server.
4. **Check the Startup process.**
During Startup, the Ready, Error, Disk Full, and Copy Error LED's will blink or stay on for a few seconds. If the Error LED remains lit, there is a hardware problem. More information on the LEDs can be found on page 5.

The Hardware Installation is complete.

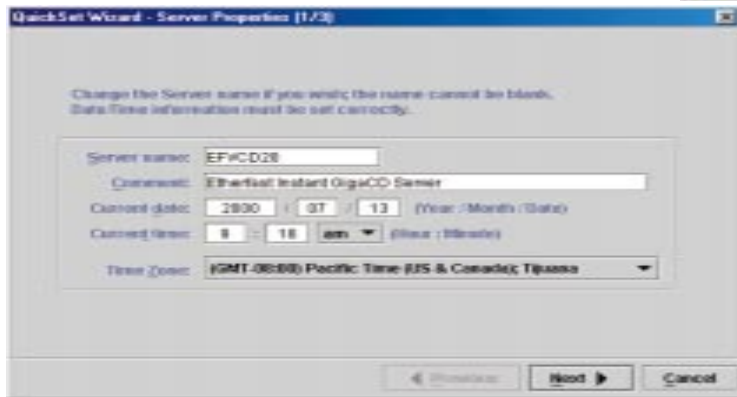
Installing and Configuring the Setup Software

1. **Insert the Setup CD-Rom** into the CD drive on your PC. The Setup program should start automatically. If it doesn't, select **SETUP.EXE** on your CD drive.
2. **Select the Administrator installation option** and follow the prompts to install the *Instant GigaCD Manager Utility*.
3. **Start the *Instant GigaCD Manager Utility*.**

4. **The main screen will appear** as shown below. Select the virtual CD-Rom to be configured. If prompted for a password, click OK. By default, there is no password.



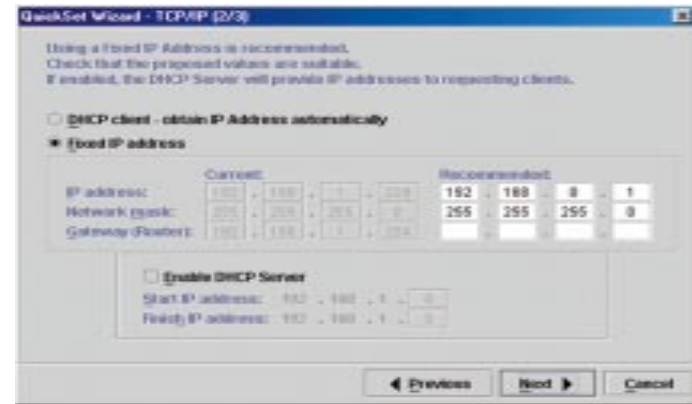
5. Select the **SETUP** icon and start Quick Setup.



Server Properties:

- Server Name This will show the default name which you can change however you wish.
- Comment Any optional comments can be placed here.
- Date/Time Adjust the system's time setting here.
- Time Zone Adjust the time zone for your location here.

Press Next to continue.

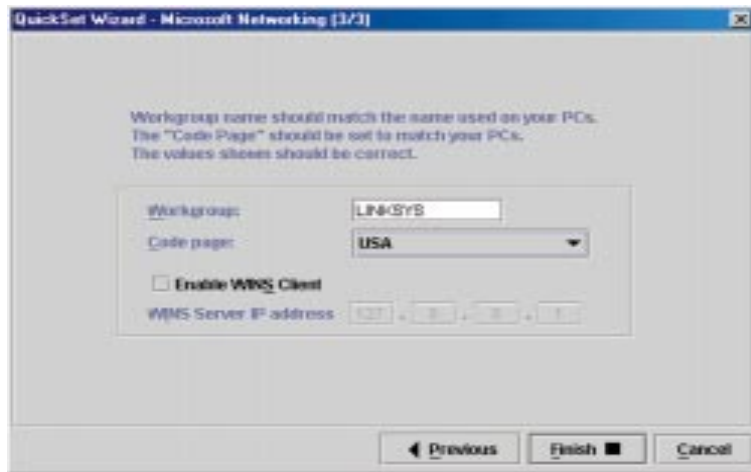


TCP/IP:

- DHCP Client - Obtain IP Address Automatically You can enable this setting, if there is a DHCP or Bootp server connected to your LAN, to obtain the Server's IP Address. Since this is a Server, however, it is best to use a Fixed IP Address.
- Fixed IP Address You can enter your Fixed IP Address here.
- IP Address Quick Setup will suggest unused values from within the address range used on this segment of the LAN. If the suggested value is currently being utilized by a device that has been turned OFF, change the address to one that is not being used.
- Network Mask This should be use same values as the other PC's on your LAN. The default value for the Server is 255.255.255.0.
- Gateway This should also be use same values as the other PC's on your LAN.
- Enable DHCP Server If selected, the Server will provide IP Addresses and related data to PCs on the network. PCs can only request such data if they are setup as DHCP Clients. See page 26, *Windows Client Setup*, for more information.

- Start IP Address This is the first value for the IP Addresses allocated by the DHCP Server.
- Finish IP Address This is the final value for the IP Addresses allocated by the DHCP Server. The range between the Start IP Address and Finish IP Address should be large enough to hold all of the DHCP Clients.

Press Next to continue.



Microsoft Networking:

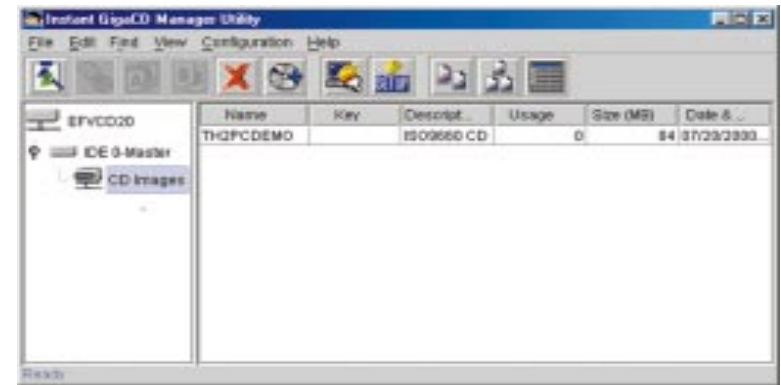
- Workgroup Name This name should correspond with the name used by the PCs on your LAN.
- Code Page You will want to select the appropriate region within which you are running the Server.

6. Click **“Finish”** to save and exit. The Instant GigaCD Server is now operational.

Using the EtherFast Instant GigaCD Server

Server Administration

1. Start up the Instant GigaCD Manager Utility. It will automatically scan the network for the Server and then the main screen will appear.
2. In the left panel, you will see a display of the Servers currently connected to your network. Click on that Server that you wish to access. You will be prompted for a password if one has been set.
3. Once the Server is selected, the cabinets within will be listed and the main panel (on the right) will display the cd images within a selected cabinet.



Note: If using Windows 2000, you can NOT select the number of Virtual Drives to be created, or the drive letter used.

Once the Server has been properly installed and setup using the Setup Manager, the Instant GigaCD Server can be managed using the Configuration menu in the Management Utility.

Password



You can set a password to restrict access to the Instant GigaCD Server, protecting the configuration data from unauthorized changes. It is recommended that you set a password.

- **Old Password** If a password has already been set, it must be entered into this field. Leave this field blank if no password has been set.
- **New Password** Enter the new password here.
- **Confirm Password** Re-enter the new password here.

System

The System heading includes the following tabs:

General - For selecting the name which the Instant GigaCD Server will have in your network. From here, you can also set the date and time.

Copy - For setting the default location of saved CD images in your network.

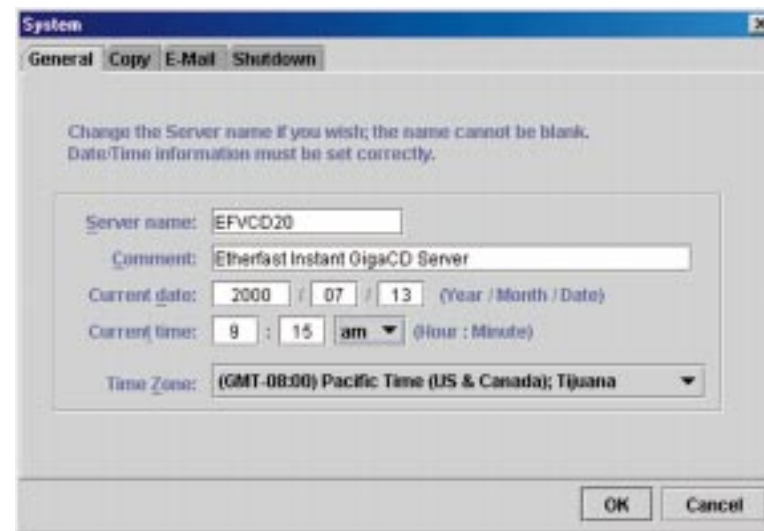
Instant GigaCD Server

E-Mail - For enabling E-mail messages sent to you in the event of a problem or error.

Shutdown - For shutting down and setting a shutdown schedule.

General

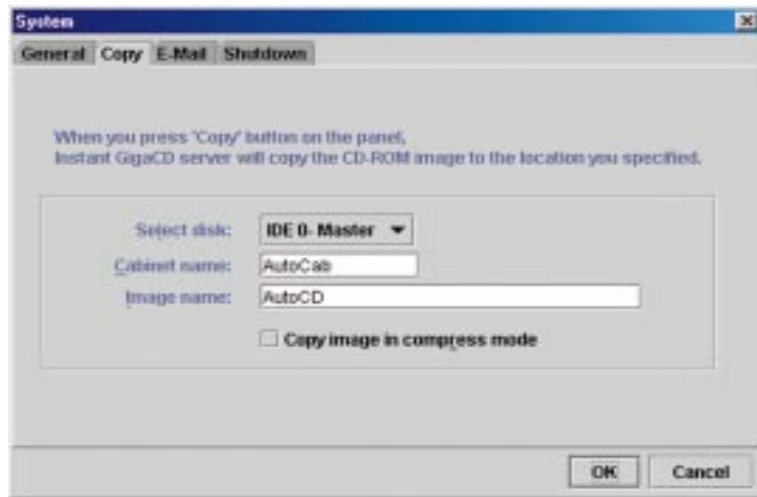
This data was provided within the Setup Utility and can be adjusted here.



- **Server Name** You can change the name of the Server so it appears differently on Your Network. However, if you change the Server's name, remember that any shortcuts to locations on the Server will no longer work. Punctuation and special characters (e.g. %#@) cannot be included in the name.
- **Comment** This optional field allows you to enter a comment, such as the physical location of the Instant GigaCD Server, if you wish.
- **Current Date /Current Time** The Server's calendar will be set according to the information put into these fields.
- **Time Zone** Find and select your correct Time Zone in this drop down menu.

Copy

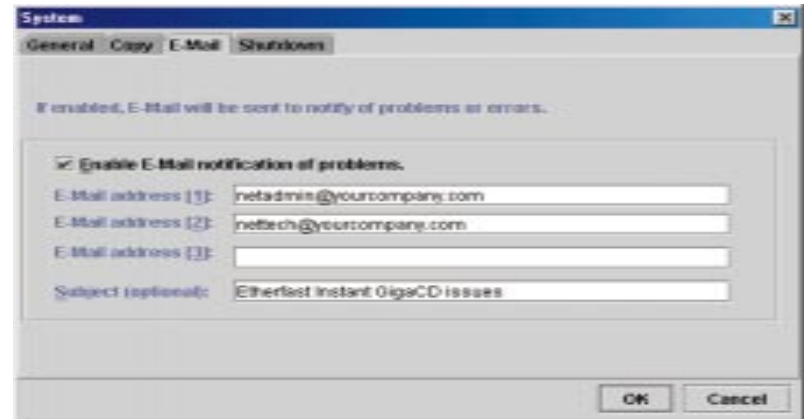
This information will set the default destination for CD images copied from the Server.



- **Select Disk** Select the drive you wish to use as the default destination.
- **Cabinet Name** Enter the name of the cabinet you wish to use as the default destination. If no such cabinet exists, it will be created.
- **Image Name** Enter a name here to be used as a default Image Name. This will be used only in the event that the “Volume Name” on the CD is blank.
- **Copy image in compressed mode** Check this box to enable and saved cd images will be compressed, if possible. However, if the cd image is compressed, file sharing is NOT possible, because the compressed file can not be read by other PCs.

E-Mail

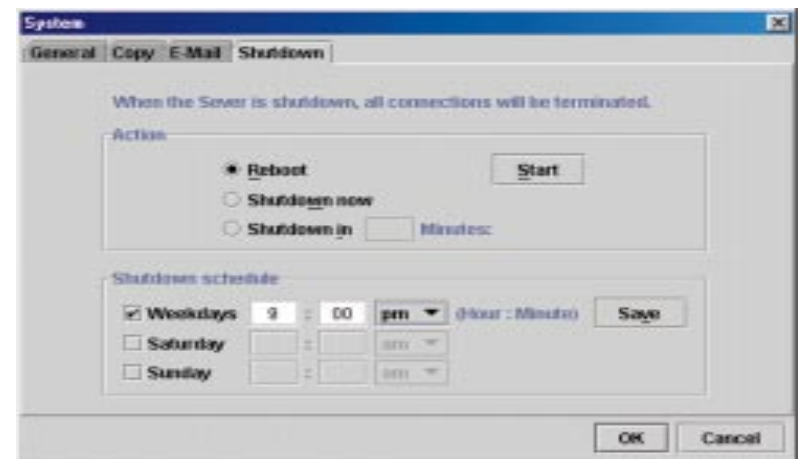
If enabled, this will send an E-Mail in the event of a problem or error.



- **Enable E-Mail Notification of Problems** This must be checked for E-Mails to be sent. At least one E-Mail address must be provided.
- **E-Mail Address** Enter from one to three E-Mail addresses in these fields to which any messages will be sent.
- **Subject (optional)** This text will be used as a default “Subject” line for any E-Mail messages.

Shutdown

From here, you can shut down or reboot the Server or set a shutdown schedule. After a shutdown, you must manually switch the Server back ON.



Shutting Down

- **Reboot** Select this to restart the Server upon pressing Start.
- **Shutdown now** Select this to shut down the Server immediately upon pressing Start. After shutting down, the Server will not restart.
- **Shutdown in [] minutes** This will start a delayed shutdown, upon pressing Start, with a maximum delay of 999 minutes.
- **Start** Pressing this will begin the selected action.

Scheduling a Shutdown

- **Weekdays/Saturday/Sunday** Select the appropriate check box for when you'd like to schedule a shutdown. Enter the time when you'd like the shutdown to occur, selecting am or pm from the pulldown menu.
- **Save** Pressing this will save the scheduled data.

Network

The Network heading includes the following tabs:

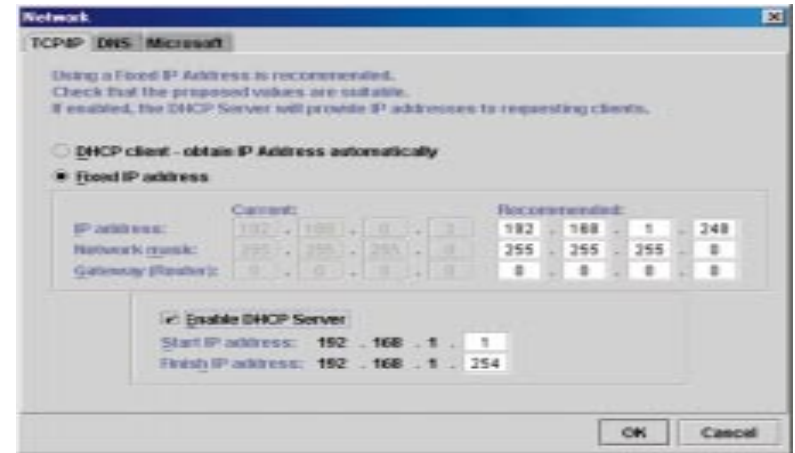
TCP/IP - For adjusting IP address and related data, including the DHCP Server function.

DNS - For configuring DNS entries.

Microsoft Networking - For setting the Workgroup Name and Code Page.

TCP/IP

This data was provided within the Setup Utility and can be adjusted here.

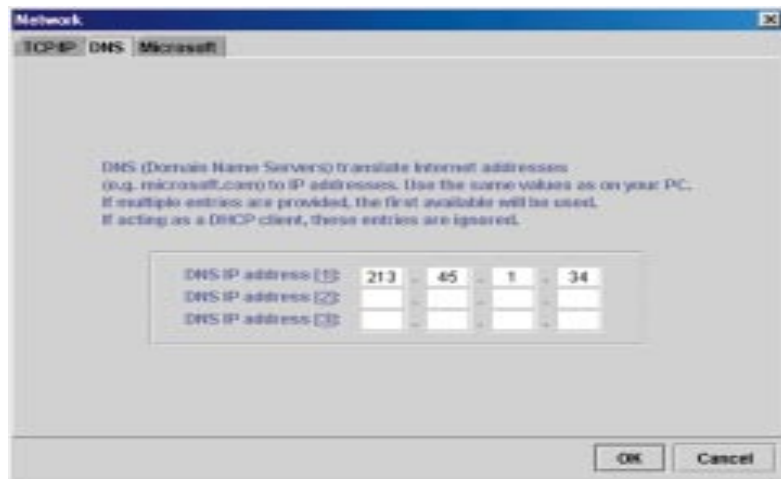


- **DHCP Client** A DHCP (Dynamic Host Configuration Protocol) Server provides an IP Address to PCs and other devices on the network. This should be selected if you have a DHCP Server on your Network.
- **Fixed IP Address** If Your Network does not have a DHCP Server, select this and enter the appropriate data in the following box.
 - **IP Address** This IP Address must be unused and compatible with the other devices on Your Network. This usually means that the first three fields should be the same as your PC and the last field should be an unused number between one and 254.
 - **Network Mask** This should be the same network mask used by the other devices on Your Network.
 - **Gateway (Router)** If Your Network has a Router or other Gateway, enter its IP Address here.

- **Enable DHCP Server** When enabled, the Server will provide IP Addresses and related data to other, networked PCs upon request. To use this feature, the PCs in Your Network must be configured as DHCP Clients. If enabled, you should enter at least one DNS (Domain Name Server) value on the DNS tab.
Note: Never enable this if you already have a DHCP Server in Your Network.
- **Start IP Address** Enter into this field the first number in the range of IP Addresses in Your Network to be allocated by the DHCP Server. This number must be between one and 254.
- **Finish IP Address** Enter into this field the last number in the range of IP Addresses in Your Network to be allocated by the DHCP Server. The range should be large enough to cover all the possible DHCP Clients.

DNS

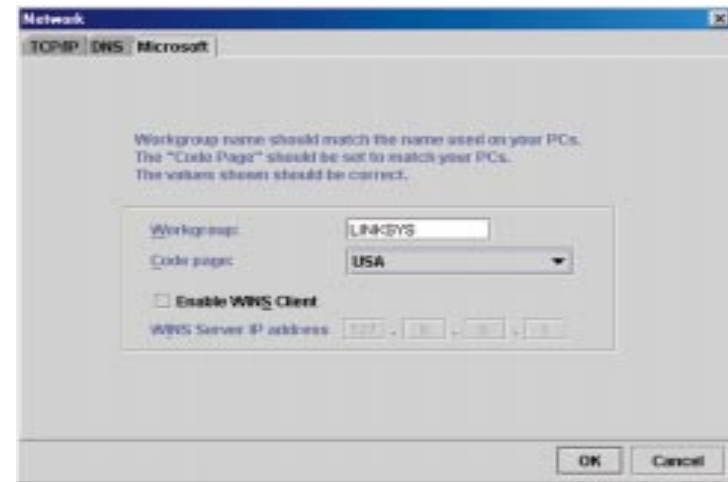
A DNS (Domain Name Server) translates names (e.g. Linksys.com) to IP Addresses. You will only need to enter information under this tab if using the Server as a DHCP Server or using the E-Mail notification feature on page 15.



Enter the IP Address of the Server under DNS IP Address [1]. The other fields are optional and will be utilized if the first DNS is not available.

Microsoft

Input information under this tab to configure for Microsoft networking.



- **Workgroup** This should match the name of your Workgroup. Users in other workgroups will still be able to use the Instant GigaCD Server.
- **Code Page** Select the appropriate region within which you are running the Server.

Utility

The options provided under the Utility heading are rarely needed and are not required for normal operation. The Utility heading includes the following tabs:

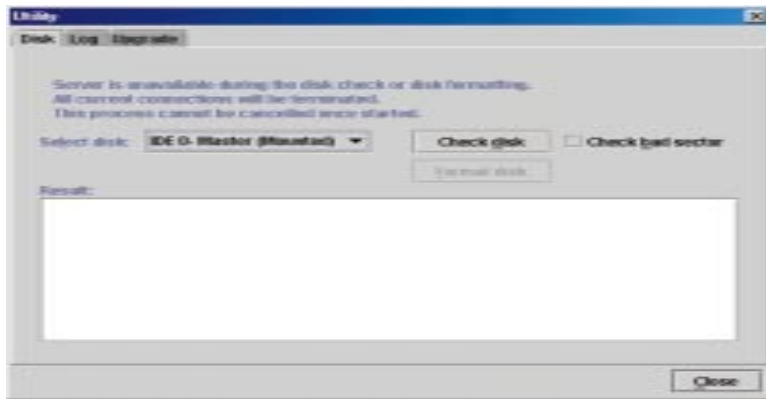
Disk - For checking or fixing the file system.

Log File - For viewing the Instant GigaCD Server's Log File.

Upgrade - For upgrading the Instant GigaCD Server's Firmware.

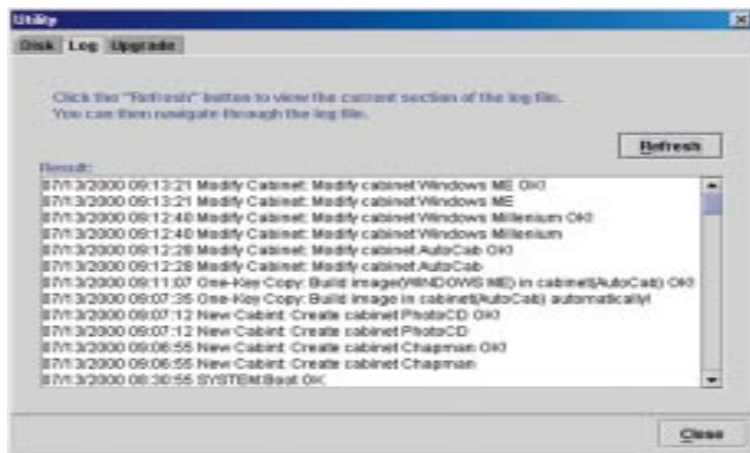
Disk

On this tab, you can check the Server's hard disk for any errors.



- **Check Disk** The Server will check for errors when this button is clicked. Any errors will be corrected if possible.
- **Check for Bad Sectors** If enabled, the entire disk will be scanned for errors when the Check Disk button is pressed. Checking the disk for bad sectors will significantly increase the amount of time it will take to check the disk.
- **Result Panel** This panel will display any actions taken while the server is checking the disk.

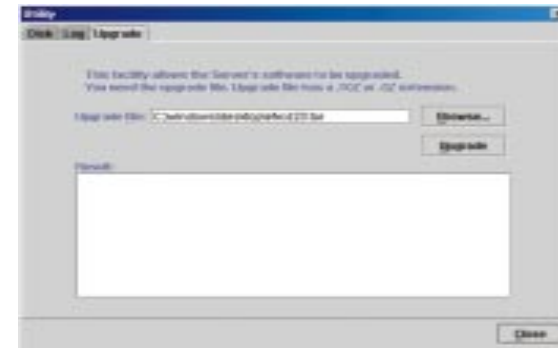
Log



The log file is a record of the Server's activity, which can help in management and troubleshooting. Click the Refresh button to update the log file.

Upgrade

This allows you to upgrade the Instant GigaCD Server's firmware. Remember that the Server is unavailable during upgrade process and that all connections are lost, including the one used to start the Upgrade. The upgrade procedure may take up to ten minutes. Once it is completed, reboot the Server if it does not do so automatically, re-establish the connection to Your Network, and clients may once again access the cd images.



- **Upgrade File** Enter the full path (e.g. C:\program files\Virtual CD-Rom Utility\manager\DS36799.rpm) of the upgrade file. You can also find the file with the Browse button.
- **Upgrade** This button will start the upgrade process once the Upgrade File has been selected.

Status

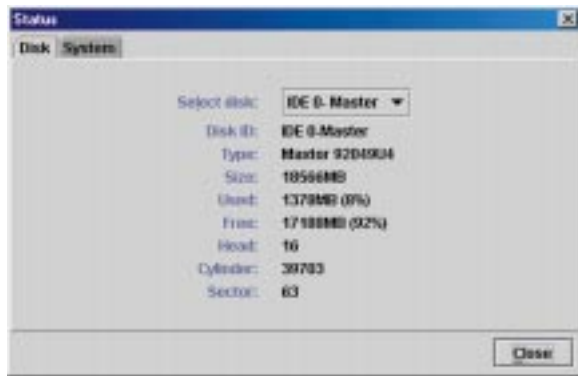
View the status of the Instant GigaCD Server with the two tabs provided:

Disk - For checking the status of the Server's hard disk.

System - For checking the system's status.

Disk

View the following data about the Server's hard disk.



- **Disk ID** The values for the IDE interface are indicated here.
- **Type** This will display the type of hard disk installed on the Server.
- **Size** This displays the total hard disk size available to the user.
- **Used** This indicates the amount of the hard disk already filled.
- **Free** This indicates the amount of hard disk space remaining.
- **Heads** This displays the number of heads on the hard disk.
- **Cylinders** This displays the number of cylinders, which is equal to the number of tracks on the hard disk.
- **Sectors** This displays the number of sectors in each track.

System



- **Default Server Name** This is the name given to the Server by the factory.
- **Server Name** This is the name given to the Server by the user or, if one has not been selected by the user, it is identical to the Default Server Name.
- **Date** Current date, provided by the Server's clock/calendar.
- **Time** Current time, provided by the Server's clock/calendar.
- **Time Zone** Current time zone setting.
- **Firmware Version** Version of the Server's software.
- **Hardware ID** Server's serial number.
- **Hardware Address** Also known as the Physical Address or MAC Address, this is a low level identifier which corresponds to the Network Adapter Address on a PC.
- **IP Address** This is the Server's current IP Address.

Managing Your CD Images

Overview

The Manager Utility supplied with the Instant GigaCD Server is used to create images of CDs and manage the images created. To use the images created, PCs on Your Network must have the Selector program installed.

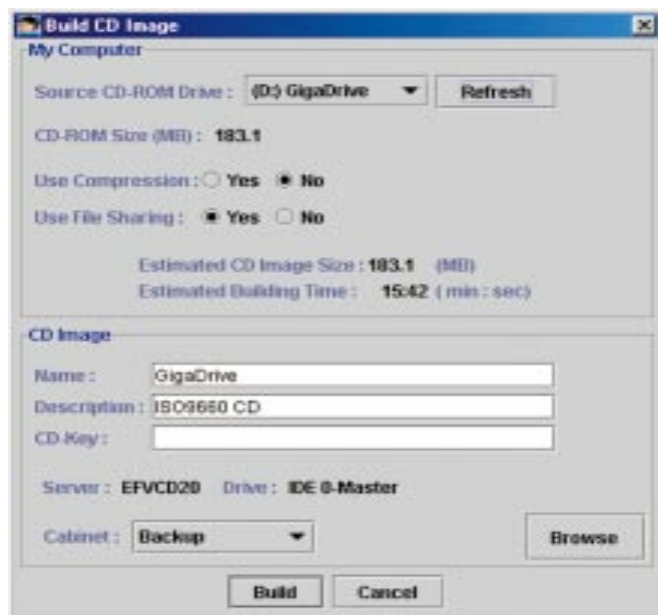
Your CD images can be stored in Cabinets for better organization. Cabinets are a lot like folders, except one Cabinet CANNOT be placed in another.

To create a new Cabinet, select *File - New - Cabinet* from the menu and enter the Cabinet's name. You can modify the Cabinet's description by selecting the **Properties** icon and entering the new data. You can Cut, Copy, Paste, and Delete Cabinets or CD images to organize your data but you CANNOT copy a CD image from one Server to another.

Creating an Image File

To create a new CD image file:

1. **Click the Build New Image File icon** or select *File - New - CD* from the menu and you will see the following screen:



Instant GigaCD Server

Use Compression	If this is selected, then the CD image file is more compressed and will occupy less space on the hard disk. However, selecting Use Compression prevents File Sharing .
File Sharing	If this is selected, users within Your Network will be able to access the CD images on the Server.
Name	Enter the name for this CD image here.
Description	Enter a description of the CD image's contents here.
CD-Key	This is the serial number or other identifier from the original CD which some programs will require to access the CD image.
Cabinet	Select the Cabinet in which the image is to be stored.

2. **After completing the Build CD Image screen**, click Build to start creating the CD image. Building a CD image has an adverse affect on user access. It is best to build images when the Server requires little use.

3. **During the Build process**, you can suspend the process by using the Pause/Resume button or press Cancel to stop the Build process completely.



Locating an Image File

1. Select Find from the menu to open the **Find** dialogue.

2. Enter the search text in the **Key Word** field and select to search by Name, Description, or Both.



3. To continue the search and find any matches, open the **Find** dialogue, then click **Find Next**.

Windows Client Setup

Overview

To use the Instant GigaCD Server, you will need to perform the following setup on each PC in Your Network.

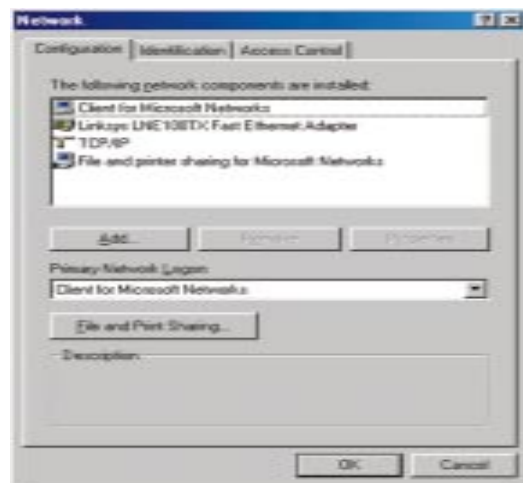
1. Check your TCP/IP settings. If you already have a working TCP/IP network, no changes are required. If you do not, proceed to TCP/IP Setup.
2. Install the Instant GigaCD Server's Client software. This will install the Server's driver on your PC and install the Selector program to enable access to cd images.
3. Use the Selector program to locate the Server. The CD images are then available to you as if a real CD were located in your CD-ROM drive.

Please Note: If using Windows 2000, you can NOT select the number of Virtual Drives to be created, or the drive letter used.

TCP/IP Setup

The TCP/IP protocol is required in order to use the Instant GigaCD Server.

1. Select the Control Panel from the Start menu and choose the Network option. You should see a screen like the following:



Instant GigaCD Server

2. If a line such as "TCP/IP -> Network Card" is not listed, then you need to install the TCP/IP protocol on your PC by selecting Add - Protocol - Microsoft - TCP/IP - OK.

3. With the TCP/IP entry highlighted, select Properties. Go to the IP Address tab and you should see a screen like the following:



To act as a DHCP Client

Select **Obtain an IP Address Automatically**, as shown above. If you have enabled the Server to act as a DHCP Server, it will now provide IP Addresses (and related data) to your PC when it boots.

To use "Specify an IP address" (fixed IP Address)

If your PC is already configured, no changes are required.

If you just installed TCP/IP, you need to enter:

IP Address and Subnet mask (on the **IP Address** tab, as shown above)

Default Gateway Address (on the **Gateway** tab)

These values must be compatible with other devices on your LAN. Each PC requires a unique IP Address (usually only the last field is different on each PC).

Note: The Gateway is the IP Address of your router or internet gateway. If you don't have a router or internet gateway, the address should be left at 0.0.0.0. If you have a Router on your LAN, ask your LAN Administrator what values to use.

Troubleshooting

Common Problems and Solutions

This chapter provides the solutions to problems occurred during the installation and operation of the Instant GigaCD Server. Read below description to solve your problems.

1. I can't connect to the Virtual CD-ROM Server to configure it.
 - Check to make sure that the Instant GigaCD Server is properly installed, LAN connections are OK, and it is powered ON.
 - Make sure that your PC and the Instant GigaCD Server are on the same network segment. (If you don't have a router, this must be the case.)
 - Make sure that your PC is using an IP Address within the range 192.168.0.3 to 192.168.0.254 and thus compatible with the Instant GigaCD Server's default IP Address of 192.168.0.2. In Windows, this is done by using Control Panel-Network to check the Properties for the TCP/IP protocol.
2. Can't find the Virtual CD-ROM Server when I browse the Network.

Check the following settings on Control Panel - Network.

 - TCP/IP protocol is installed. If not, use Add - Protocol - Microsoft - TCP/IP to install it. See Client Setup for configuration of TCP/IP.
 - TCP/IP protocol is bound to your Network card (NIC). Select your Network card, click Properties, and then the Bindings tab. If TCP/IP is not checked, check it.
 - TCP/IP/Network card is bound to the Client for Microsoft Networks service. Select the TCP/IP entry for your Network Card, click Properties, and then the Bindings tab. If Client for Microsoft Networks is not checked, check it.
 - If you don't have a router, check that your IP Address is compatible with the Virtual CD-ROM Server's. This means it needs to be from the same address range (e.g. 192.168.0.3 to 192.168.0.254) and using the same Subnet Mask (e.g. 255.255.255.0)
 - If you DO have a router, check that your Gateway IP Address is set correctly. Ask your LAN administrator for the correct value.
3. I'm using Windows 2000, and can't change the Drive Letter used by the Virtual CD-ROM driver.
 - Windows 2000 system only allows one CD drive be assigned on installation. Also, the drive letter can not be changed (the next drive letter will always be used).

After first installation and reboot, you can use the "Setup Instant GigaCD Drive" icon in the Selector utility create new CD ROM drives and set their drive letters.

When you do this, you need to reboot. After rebooting, Windows 2000 will prompt you to reboot a second time. There is no need for a second reboot; you can cancel this prompt.

Appendix

Specifications

Model Number	EFVCD20
Standards	IEEE 802.3, IEEE 802.3u
Protocols	SMB/CIFS over TCP/IP
Port Speed	1 Auto-Sensing RJ-45 Port
Cabling Type	10BaseT: Category 3 or 5 UTP 100BaseTX: Category 5 UTP
Topology	Star
LED Indicators	Copy, Ready, Error, LAN, Disk, Disk Full, Copy Error
Switches	Power, Reset, Uplink
Storage Capacity	20 Gigabyte/Hard Disk

Environmental

Dimensions	330 x 180 x 166 mm (13.0 x 7.1 x 6.5 in.)
Weight	5.8 kg. (11.4 lbs.)
Power Input	100-240 V AC
Certifications	FCC Class B, CE Mark Commercial,
Operating Temp.	41° F to 104° F (5° C to 40° C)
Storage Temp.	14° F to 140° F (-10° C to 60° C)
Operating Hum.	10% to 80% Non-condensing
Storage Hum.	5% to 90% Non-condensing

Linksys Warranty Information

BE SURE TO HAVE YOUR PROOF OF PURCHASE AND A BARCODE FROM THE PRODUCT'S PACKAGING ON HAND WHEN CALLING. RETURN REQUESTS CANNOT BE PROCESSED WITHOUT PROOF OF PURCHASE.

IN NO EVENT SHALL LINKSYS' LIABILITY EXCEED THE PRICE PAID FOR THE PRODUCT FROM DIRECT, INDIRECT, SPECIAL, INCIDENTAL, OR CONSEQUENTIAL DAMAGES RESULTING FROM THE USE OF THE PRODUCT, ITS ACCOMPANYING SOFTWARE, OR ITS DOCUMENTATION. LINKSYS DOES NOT OFFER REFUNDS FOR ANY PRODUCT.

LINKSYS OFFERS CROSS SHIPMENTS, A FASTER PROCESS FOR PROCESSING AND RECEIVING YOUR REPLACEMENT. LINKSYS PAYS FOR UPS GROUND ONLY. ALL CUSTOMERS LOCATED OUTSIDE OF THE UNITED STATES OF AMERICA AND CANADA SHALL BE HELD RESPONSIBLE FOR SHIPPING AND HANDLING CHARGES. PLEASE CALL LINKSYS FOR MORE DETAILS.



<http://www.linksys.com>

© Copyright 2000 Linksys, All Rights Reserved.

Free Manuals Download Website

<http://myh66.com>

<http://usermanuals.us>

<http://www.somanuals.com>

<http://www.4manuals.cc>

<http://www.manual-lib.com>

<http://www.404manual.com>

<http://www.luxmanual.com>

<http://aubethermostatmanual.com>

Golf course search by state

<http://golfingnear.com>

Email search by domain

<http://emailbydomain.com>

Auto manuals search

<http://auto.somanuals.com>

TV manuals search

<http://tv.somanuals.com>