

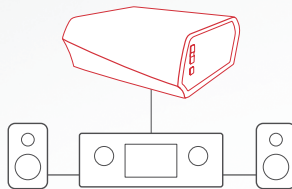


**HEOS Link QUICK START GUIDE**

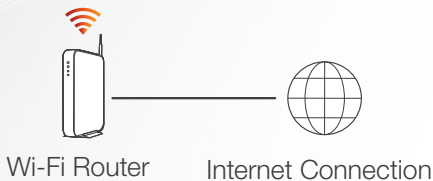
**HS2**

# BEFORE YOU BEGIN

The HEOS Link is designed to add HEOS multi-room audio functionality to an external device which offers audio amplification, like an AV receiver or integrated amplifier.



Make sure you have the following items in working order:



Apple iOS, Android or Kindle mobile device connected to your network

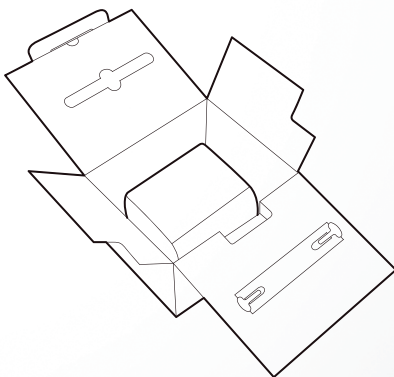
# STEP 1: UNPACK

English

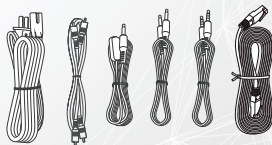
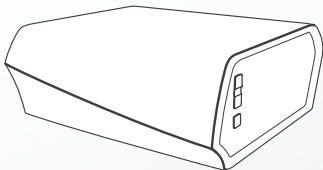
Français

Español

Carefully unpack your new HEOS Link.

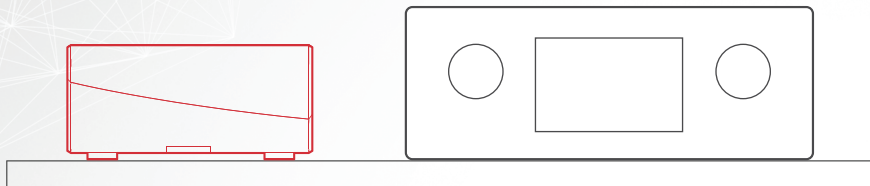


Verify that the following items are included in the box.



# STEP 2: PLACE

Place the HEOS Link at a convenient location near the amplification device you are connecting it to.



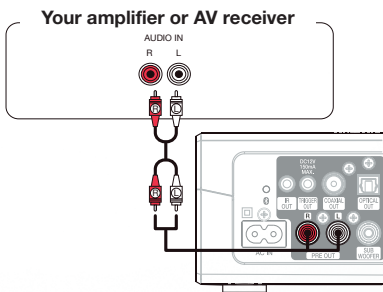
# STEP 3: CONNECT

English

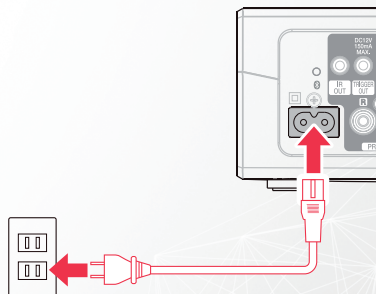
Français

Español

- 1 Connect the HEOS Link to an available input on your amplifier using the included analog RCA cables.

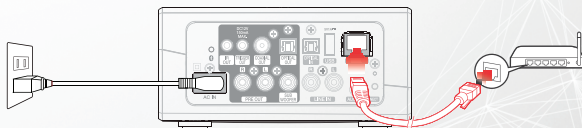


- 2 Connect the power cord to the HEOS Link and a wall outlet.



## OPTIONAL

If you are connecting the HEOS Link to a wired network, connect the included Ethernet cable between the HEOS Link and your router. Do not connect the Ethernet cable if you are connecting your HEOS Link to a wireless network.



# STEP 4: CONTROL

- 1 Download the HEOS by Denon App.  
Go to the Apple App Store, Google Play or Amazon Appstore and search for "HEOS by Denon" to download and install.



- 2 Launch the HEOS App and follow the instructions in the app.





# BASIC TROUBLESHOOTING

## **My HEOS device won't connect to my network using the audio cable**

- Make sure your mobile device is connected to your wireless network before setting up your HEOS device.
- Alternatively, you can connect your HEOS device to your network router using the included Ethernet cable. Once connected via Ethernet, the HEOS by Denon App should recognize the HEOS device and you can manually move it to your wireless network using Settings/My Devices/Device\_Name/Advanced/Network Settings.

## **I get a message "Device was not found"**

- Move your HEOS device closer to your wireless router.
- Your HEOS device and controller device may not be on the same network. Verify that the controller device is on the same network as your HEOS device. This is usually configured under the Settings feature on your mobile device. If you have more than one network, your device may hop to a different network as you move around your home.
- Make sure you don't have any other electronic devices interfering with your wireless network signals. Microwave ovens, cordless phones, and some televisions can cause wireless network interference.
- If your HEOS devices are located far away from your router, consider adding a wireless range extender like the HEOS Extend.
- In case your wireless router is incompatible with your HEOS device, please use the optional HEOS Extend Wireless Range Extender and hard-wire it to your router.

## **Music cuts out or delays sometimes**

- Make sure your Internet connection is operating correctly.
- If you are sharing your network with other users or devices, they may be using most of your bandwidth (especially if they are streaming video).
- Make sure your HEOS devices are within range of your wireless network.
- Make sure your HEOS devices are not located near other electronic devices that could interfere with its wireless connectivity (like microwave ovens, cordless phones, TVs, etc...).

## **Cannot pair a Bluetooth device with the HEOS device**

- The connection from the Bluetooth mobile device is malfunctioning. Power cycle the mobile device, remove the pairing information and re-pair the HEOS device to the mobile device.



## I hear distortion when using the AUX input

The analog output signals from some sources can be fairly strong. If the input level of the source device is turned up high, it could overload the inputs of the HEOS device. This is unlikely to cause damage, but can cause distorted sound. Initially, set the volume of the source to a medium – low level, then turn it up as needed. If you hear distortion, turn down the device's volume control.

## I hear a delay when using the AUX input with my TV

- If you are connecting the AUX input with your cable or satellite box for enjoying TV audio through multiple HEOS devices, you may hear a delay between when you see someone speak and when you hear the audio. This is because the HEOS system must buffer the audio before it sends it out to the devices so that it arrives at all devices at the same time.
- You can avoid this delay by listening only to the HEOS device which is directly connected to the set top box.

## Connecting to a network using WPS

If your wireless router support WPS (Wi-Fi Protected Setup™) your HEOS wireless device can optionally connect to your network using the “Push Button” method by following these steps:

1. Press the WPS button on your router.
2. Within 2 minutes, press and hold the Connect button on the rear panel of the HEOS device for 3 seconds.
3. The LED on the front of the HEOS device will flash green for several seconds as it connects to your router.
4. When the connection is complete, the LED on the front of the HEOS device will turn solid blue.

## Resetting your device

Resetting your HEOS device will clear out the wireless network settings, EQ, and name but retain it's current software. You will have to use Settings->Add Device to reconnect the device to your home network before it can be used.

To reset your HEOS device, press and hold the Connect and Bluetooth buttons located on the back of the HEOS device for 5 seconds until the front LED begins to flash amber.

The HEOS by Denon app and brand is not affiliated with any manufacturer of any mobile device.

HEOS and the HEOS logo are trademarks or registered trademarks in the US and/or other countries.

Apple and the Apple logo are trademarks of Apple Inc., registered in the U.S. and other countries. App Store is a service mark of Apple Inc.

Google Play is a trademark of Google Inc.

Amazon, Kindle, Fire and all related logos are trademarks of Amazon.com, Inc. or its affiliates.

Wi-Fi Protected Setup™ logo is trademark of Wi-Fi Alliance.

The Bluetooth® word mark and logos are registered trademarks owned by Bluetooth SIG, Inc. and any use of such marks by D&M Holdings Inc. is under license. Other trademarks and trade names are those of their respective owners.

All other trademarks are the property of their respective owners.

# CONTACT Denon

## For US & Canada only:

If you need further assistance with your HEOS Product, please contact HEOS by Denon Customer Support Services below:

Website [www.HEOSbyDenon.com/Support](http://www.HEOSbyDenon.com/Support)

Email [Support@HEOSbyDenon.com](mailto:Support@HEOSbyDenon.com)

Live Chat [www.HEOSbyDenon.com/LiveChat](http://www.HEOSbyDenon.com/LiveChat)

Telephone Toll Free (855) 499 2820  
(M-F 10:00AM to 10:00PM EST / Sat 12:00PM to 8:00PM EST)

Online Manual [manuals.denon.com/HEOSLINKHS2/ALL/EN](http://manuals.denon.com/HEOSLINKHS2/ALL/EN)





**DENON<sup>®</sup>**

**HEOSbyDenon.com**

Printed in Vietnam 5411 11357 00AD  
Copyright ©2016 D&M Holdings Inc. All Rights Reserved.

## Free Manuals Download Website

<http://myh66.com>

<http://usermanuals.us>

<http://www.somanuals.com>

<http://www.4manuals.cc>

<http://www.manual-lib.com>

<http://www.404manual.com>

<http://www.luxmanual.com>

<http://aubethermostatmanual.com>

Golf course search by state

<http://golfingnear.com>

Email search by domain

<http://emailbydomain.com>

Auto manuals search

<http://auto.somanuals.com>

TV manuals search

<http://tv.somanuals.com>