

XPS 27

Setup and Specifications

Computer Model: XPS 7760
Regulatory Model: W13C
Regulatory Type: W13C001



Notes, cautions, and warnings



NOTE: A NOTE indicates important information that helps you make better use of your product.



CAUTION: A CAUTION indicates either potential damage to hardware or loss of data and tells you how to avoid the problem.



WARNING: A WARNING indicates a potential for property damage, personal injury, or death.

Copyright © 2016 Dell Inc. or its subsidiaries. All rights reserved. Dell, EMC, and other trademarks are trademarks of Dell Inc. or its subsidiaries. Other trademarks may be trademarks of their respective owners.

2016-10

Rev. A00

Contents

Set up your computer.....	5
----------------------------------	----------

Views.....	11
-------------------	-----------

Top.....	11
Front.....	11
Bottom.....	12
Left.....	13
Right.....	14
Back.....	15
Transform.....	16
Tilt.....	18

Specifications.....	21
----------------------------	-----------

Dimensions and weight.....	21
System information.....	21
Memory.....	21
Ports and connectors.....	22
Communications.....	22
Audio.....	23
Storage.....	23
Media-card reader.....	23
Power Ratings.....	23
Camera.....	24
VESA wall mount.....	24
Stand.....	24
Video.....	24
Display.....	25
Computer environment.....	25



Display Built-in Self Test button..... 26

Getting help and contacting Dell..... 28

 Self-help resources..... 28

 Contacting Dell.....28



Set up your computer

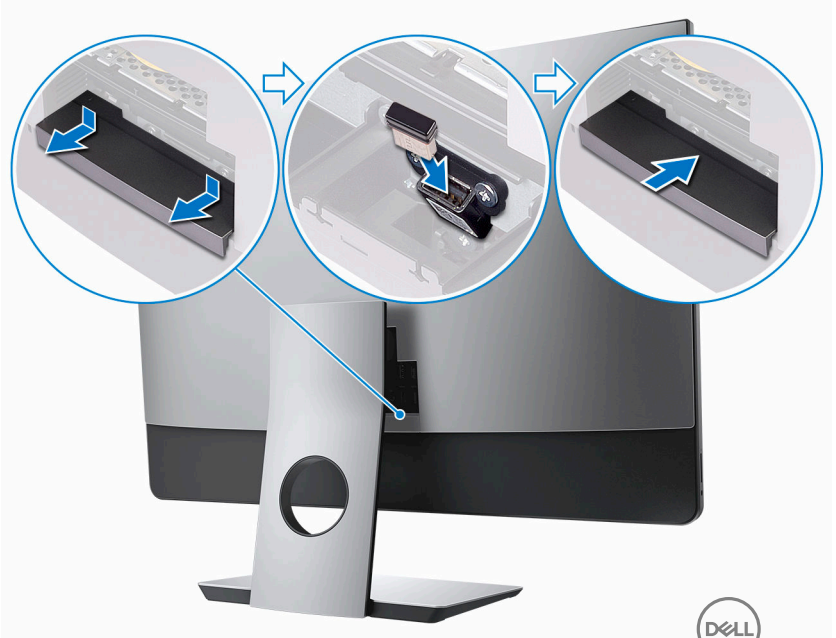
- 1 Set up the keyboard and mouse.
See the documentation that shipped with the keyboard and mouse.



- 2 Install your wireless keyboard/mouse USB dongle.
- a Tilt the display.



- b Press and pull the USB dongle-bay cover.
- c Insert the USB dongle.
- d Replace the USB dongle cover and snap it into place.



3 Connect the power cable.

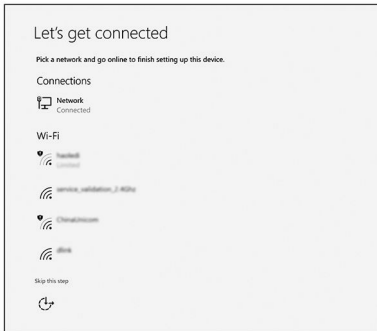
 **NOTE:** Route the cable through the stand to avoid potential damage to the cable.



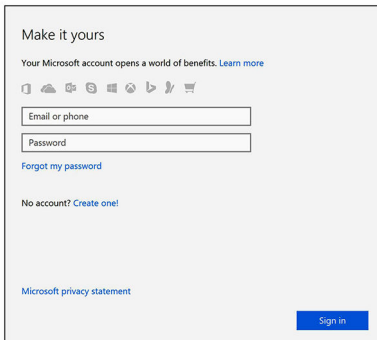
- 4 Press the power button.



- 5 Finish Windows setup.
- a) Connect to your network.



- b) Sign-in to your Microsoft account or create a local account.



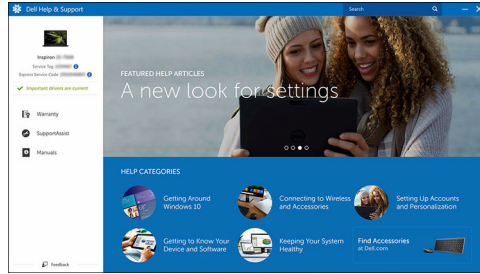
6 Explore Dell resources on your desktop.



Register your computer



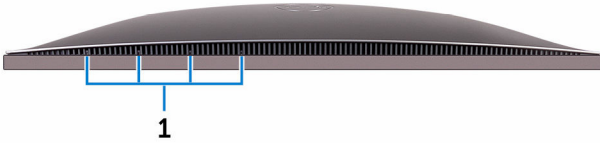
Dell Help & Support



SupportAssist — Check and update your computer

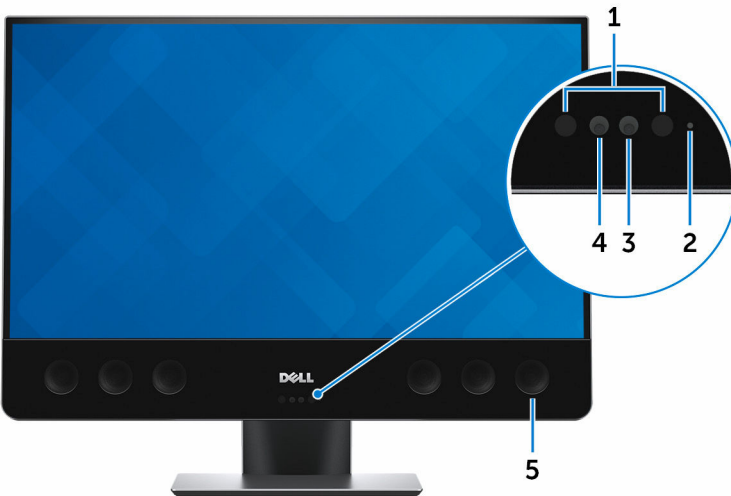
Views

Top



- 1 **Array microphones (4)**
Provide digital sound input for audio recording, voice calls, and so on.

Front



- 1 **Infrared emitters (2)**



Emits infrared light, which enables the infrared camera to sense depth and track motion

2 **Camera-status light**

Turns on when the camera is in use.

3 **Camera**

Allows you to video chat, capture photos, and record videos.

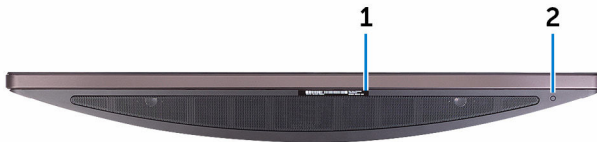
4 **Infrared camera**

Depth-sensing feature of the camera enhances security when paired with Windows Hello face authentication.

5 **Speakers**

Provide audio output.

Bottom



1 **Service Tag label**

The Service Tag is a unique alphanumeric identifier that enables Dell service technicians to identify the hardware components in your computer and access warranty information.

2 **Display Built-in Self Test button**

Press to run a built-in self-test for the display.

For more information, see [Display Built-in Self Test button](#) .

Left



- 1 **SD-card slot**
Reads from and writes to the SD card.
- 2 **Headset port**
Connect a headphone or a headset (headphone and microphone combo).



Right



1 Power button

Turns on your computer or changes the power state of your computer.

Press to put the computer in sleep state if it is turned on.

Press and hold for 4 seconds to force shut-down the computer.



NOTE: You can customize the power-button behavior in Power Options. For more information, see *Me and My Dell* at www.dell.com/support/manuals.


2 USB 3.0 port with PowerShare

Connect peripherals such as storage devices and printers.

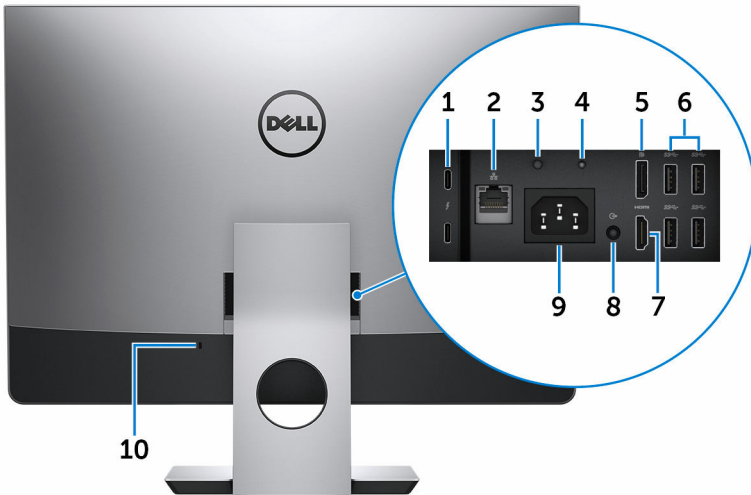
Provides data transfer speeds up to 5 Gbps. PowerShare enables you to charge your USB devices even when your computer is turned off.



NOTE: If your computer is turned off or in hibernate state, you must connect the power adapter to charge your devices using the PowerShare port. You must enable this feature in the BIOS setup program.

-  **NOTE: Certain USB devices may not charge when the computer is turned off or in sleep state. In such cases, turn on the computer to charge the device.**

Back



1 Thunderbolt 3 (USB Type-C) ports (2)

Supports USB 3.1 Gen 2, DisplayPort 1.2, Thunderbolt 3 and also enables you to connect to an external display using a display adapter.

Provides data transfer rates up to 10 Gbps for USB 3.1 Gen 2 and up to 40 Gbps for Thunderbolt 3.

2 Network port

Connect an Ethernet (RJ45) cable from a router or a broadband modem for network or internet access.

3 Power-supply diagnostics button

Press to check the power-supply state.

4 Power-supply diagnostics light

Indicates the power-supply state.

5 DisplayPort



Connect an external display or a projector.

6 **USB 3.0 ports (4)**

Connect peripherals such as storage devices and printers. Provides data transfer speeds up to 5 Gbps

7 **HDMI port**

Connect a TV or another HDMI-in enabled device. Provides video and audio output.

8 **Line-out port (configurable)**

Connect audio-output devices such as speakers and amplifiers.



NOTE: Audio line-out port can be configured to support audio line-in, microphone and headphones.

9 **Power-connector port**

Connect a power adapter to provide power to your computer.

10 **Security-cable slot**

Connect a security cable to prevent unauthorized movement of your computer.

Transform

Articulating stand



Tilt

Pedestal stand

5°





Articulating stand





Specifications

Dimensions and weight

	Touch	Non-touch
Height	435.05 mm (17.13 in)	430.35 mm (16.94 in)
Width	624.80 mm (24.60 in)	613.05 mm (24.14 in)
Depth	80.20 mm (3.16 in)	81.60 mm (3.21 in)
Weight (maximum)	17.32 kg (38.18 lb)	13.01 kg (28.68 lb)



NOTE: The weight of your computer varies depending on the configuration ordered and the manufacturing variability.

System information

Computer model	XPS 7760
Processor	<ul style="list-style-type: none">• 6th Generation Intel Core i5• 6th Generation Intel Core i7
System chipset	Integrated in processor

Memory

Slots	Four SODIMM slots
Type	DDR4 (non-ECC)
Speed	2133 MHz
Configurations supported	4GB, 8GB, 12GB, 16GB, 24GB, 32GB, 48GB, and 64GB



Ports and connectors

External

Network	One RJ45 port
USB	<ul style="list-style-type: none">• One USB 3.0 port with PowerShare• Two Thunderbolt 3 (USB Type-C) ports• Four USB 3.0 ports
Audio/Video	<ul style="list-style-type: none">• One HDMI port• One display port• One headset port• Two Thunderbolt 3 (USB Type-C) ports• One audio line-out port (configurable)



NOTE: Audio line-out port can be configured to support audio line-in, microphone and headphones

Internal

M.2 card	<ul style="list-style-type: none">• One M.2 slot for SSD• One M.2 slot for Wi-Fi and Bluetooth combo card
----------	--

Communications

Ethernet	10/100/1000 Mbps Ethernet controller integrated on system board
Wireless	<ul style="list-style-type: none">• Wi-Fi 802.11ac• Wi-Fi 802.11b/g/n• Bluetooth 4.1

Audio

Controller	Realtek ALC3266CG with Waves MaxxAudio Pro
Speakers	Eight
Speaker Output	<ul style="list-style-type: none">• Average – 10 W• Peak – 15 W
Microphone	Array Microphone
Volume controls	Program menus

Storage

Interface	SATA 6 Gbps
Hard drive	Two 2.5-inch hard drive
Solid-state drive	One M.2 SSD

Media-card reader

Type	One 4-in 1 slot
Cards supported	<ul style="list-style-type: none">• SD card• Multi Media Card (MMC)• SD Extended Capacity (SDXC) card• SD High Capacity (SDHC) card

Power Ratings

Type	360 W
Input Voltage	100 VAC to 240 VAC
Input frequency	50 Hz to 60 Hz



Input current 5.0A

Camera

Resolution

- Still image: 0.92 megapixels
- Video: 1280 x 720 (HD) at 30 fps (maximum)

Diagonal viewing angle 74.6 degrees

VESA wall mount

Type VESA MIS-D, 100, C
Hole mount pattern 100 x 100 mm
Screw type M4
Minimum clearance from wall 20 mm (0.79 in)

Stand

	Touch	Non-touch
Width	258 mm (10.16 in)	260 mm (10.24 in)
Depth	260 mm (10.24 in)	183.10 mm (7.21 in)

Video

	Integrated	Discrete
Controller	Intel HD Graphics 530	<ul style="list-style-type: none">• AMD Radeon R9 M470X• AMD Radeon R9 M485X
Memory	Shared system memory	4 GB GDDR5

Display

Type	27-in UHD touch screen	27-in UHD Non-touch screen
Height	430.99 mm (16.97 in)	355.30 mm (13.99 in)
Width	620.74 mm (24.44 in)	608.80 mm (23.97 in)
Diagonal	685.80 mm (27 in)	
Viewing angle	178 degree	
Refresh rate	60 Hz	
Resolution (maximum)	3840 x 2160	
Pixel pitch	0.1554 mm x 0.1554 mm	
Controls	Brightness can be controlled through the display-brightness increase/decrease button	

Computer environment

Airborne contaminant level: G1 as defined by ISA-S71.04-1985

	Operating	Storage
Temperature range	0°C to 35°C (32°F to 95°F)	-40°C to 65°C (-40°F to 149°F)
Relative humidity (maximum)	10% to 90% (non-condensing)	0% to 95% (non-condensing)
Vibration (maximum)*	0.66 GRMS	1.30 GRMS
Shock (maximum)	110 G [†]	160 G [‡]
Altitude (maximum)	-15.2 m to 3048 m (-50 ft to 10,000 ft)	-15.2 m to 10,668 m (-50 ft to 35,000 ft)

* Measured using a random vibration spectrum that simulates user environment.

† Measured using a 2 ms half-sine pulse when the hard drive is in use.

‡ Measured using a 2 ms half-sine pulse when the hard-drive head is in parked position.



Display Built-in Self Test button

- 1 Press and hold the Display Built-in Self Test button.



- 2 Press and release the power button.



1 Display Built-in Self Test button

2 Power button

After performing the above steps, your computer will begin to display a white screen followed by black, red, green and blue screens.

Once the Display built-in self-test is completed, your computer will proceed to boot.



Getting help and contacting Dell

Self-help resources

You can get information and help on Dell products and services using these self-help resources:

Table 1. Self-help resources

Information about Dell products and services

www.dell.com

Dell Help & Support app



Get started app



Accessing help

In Windows search, type `Help` and `Support`, and press `Enter`.

Online help for operating system

www.dell.com/support/windows

www.dell.com/support/linux

Troubleshooting information, user manuals, setup instructions, product specifications, technical help blogs, drivers, software updates, and so on.

www.dell.com/support

Learn about your operating system, setting up and using your computer, data backup, diagnostics, and so on.

See *Me and My Dell* at www.dell.com/support/manuals.

Contacting Dell

To contact Dell for sales, technical support, or customer service issues, see www.dell.com/contactdell.



NOTE: Availability varies by country and product, and some services may not be available in your country.



NOTE: If you do not have an active internet connection, you can find contact information on your purchase invoice, packing slip, bill, or Dell product catalog.



Free Manuals Download Website

<http://myh66.com>

<http://usermanuals.us>

<http://www.somanuals.com>

<http://www.4manuals.cc>

<http://www.manual-lib.com>

<http://www.404manual.com>

<http://www.luxmanual.com>

<http://aubethermostatmanual.com>

Golf course search by state

<http://golfingnear.com>

Email search by domain

<http://emailbydomain.com>

Auto manuals search

<http://auto.somanuals.com>

TV manuals search

<http://tv.somanuals.com>