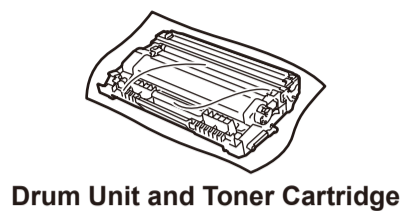
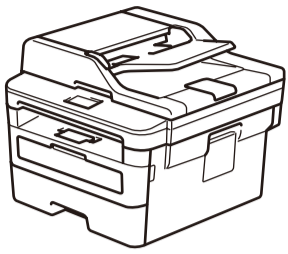
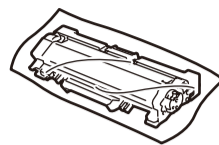




## Unpack the machine and check the components



**Drum Unit and Toner Cartridge**



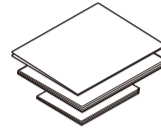
**Toner Cartridge Replacement**  
(For MFC-L2750DWXL model)  
Use the toner cartridge that is pre-installed in the drum unit first.



**Telephone Line Cord**  
(For MFC models)



**Brother Installation Disc**



**Quick Setup Guide  
Reference Guide  
Product Safety Guide**



Watch our Video FAQs for help with setting up your Brother machine:  
[support.brother.com/videos](http://support.brother.com/videos).

**NOTE:**

- Manuals in Spanish for this model are available on the Brother Solutions Center. (USA only): [support.brother.com/manuals](http://support.brother.com/manuals)  
Los manuales en español de este modelo están disponibles en el Brother Solutions Center. (Solamente en los Estados Unidos): [support.brother.com/manuals](http://support.brother.com/manuals)
- The components included in the box may differ depending on your country.
- The available connection interfaces vary depending on the model.
- Interface cables are not included. You must purchase the correct interface cable if you require one.

**USB cable**

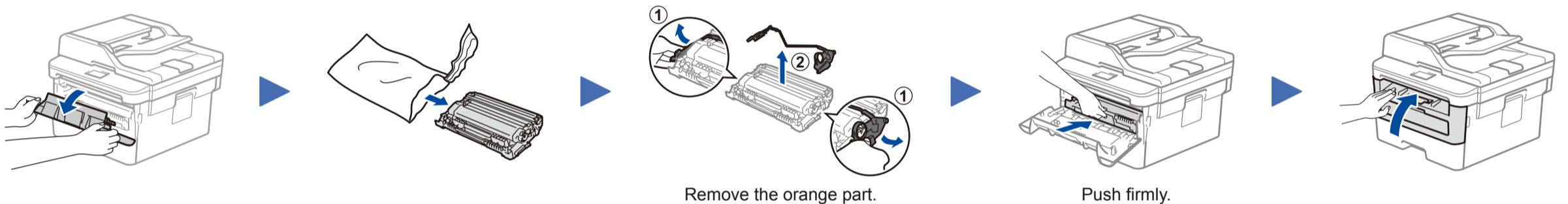
We recommend using a USB 2.0 cable (Type A/B) that is no more than 6 feet (2 meters) long.

**Network cable**

Use a straight-through Category 5 (or greater) twisted-pair cable.

- The illustrations in this *Quick Setup Guide* show the MFC-L2750DW.
- This machine's *Reference Guide* is either printed for you or is available on the Brother Installation Disc included in the carton.

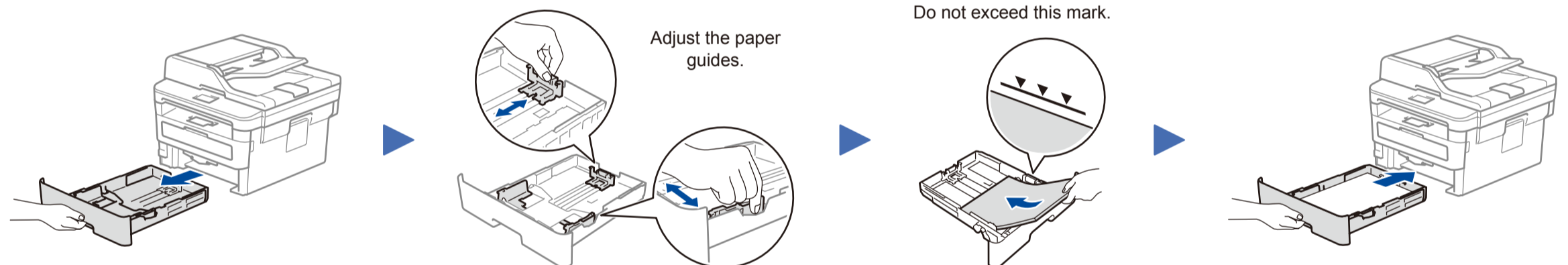
## 1 Remove the packing materials and install the drum unit and toner cartridge assembly



Remove the orange part.

Push firmly.

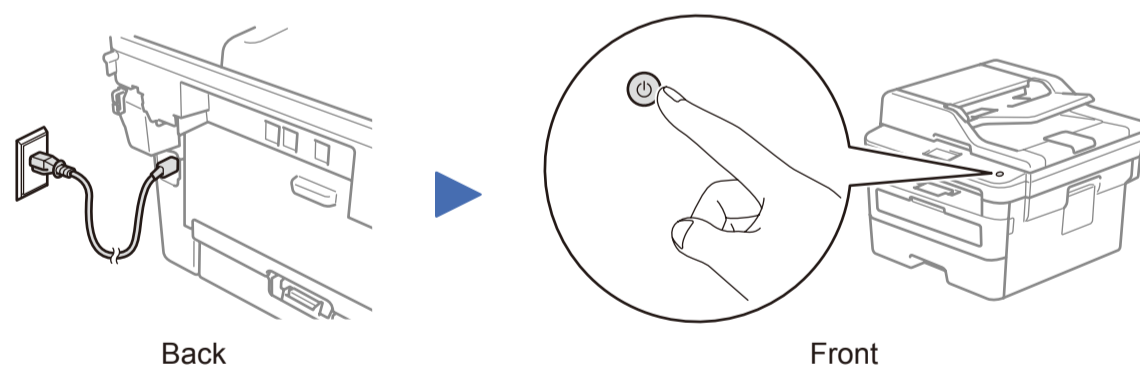
## 2 Load paper in the paper tray



Adjust the paper guides.

Do not exceed this mark.

## 3 Connect the power cord and turn on the machine

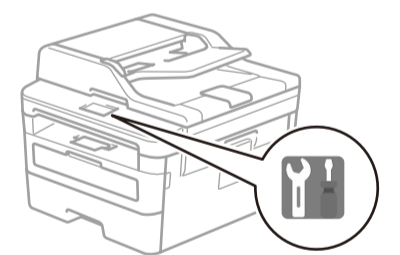


Back

Front

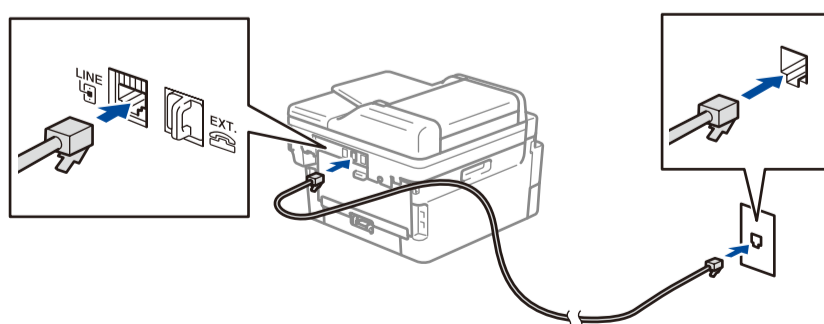
## 4 Select your language (if needed)

1. On the machine's touchscreen, press [Settings] > [All Settings] > [Initial Setup] > [Local Language].
2. Press your language.
3. Press .



## 5 Connect the telephone line cord (for MFC models only)

If you do not plan to use the fax feature on this machine, go to step **7**.



## 6 Configure the machine for faxing (for MFC models only)

If you do not plan to use the fax feature on this machine, go to step **7**.

**NOTE:**

- For more information on using the fax feature, see the *Online User's Guide*.
- Your machine is programmed to automatically receive faxes. To change this default mode, see the *Online User's Guide*.

**A. Set the date and time**

Press [Settings] > [All Settings] > [Initial Setup] > [Date & Time], and then set the date and time.

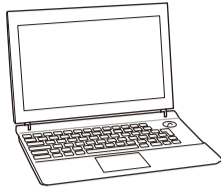
**B. Set the Station ID**

Press [Settings] > [All Settings] > [Initial Setup] > [Station ID], and then set your fax or telephone number and your name.



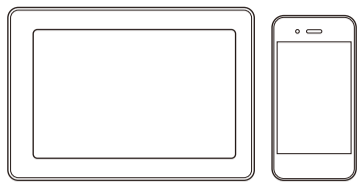
## 7 Select a device to connect to your machine

**Computer**



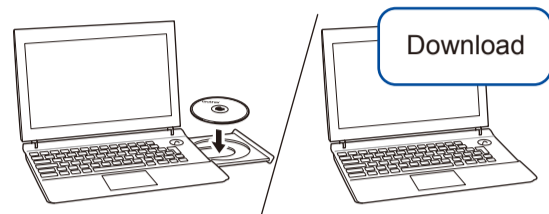
Go to **8** and follow the instructions.

**Mobile Device**



Go to **9** and follow the instructions.

## 8 Connect your computer



Put the installation disc into your CD/DVD drive, or download the Full Driver & Software Package at:

For Windows®: [support.brother.com/windows](http://support.brother.com/windows)  
For Mac: [support.brother.com/mac](http://support.brother.com/mac)

If you are using a recently released operating system on your computer, visit the above websites for updated driver and software information.

▶ Follow the on-screen instructions and prompts.

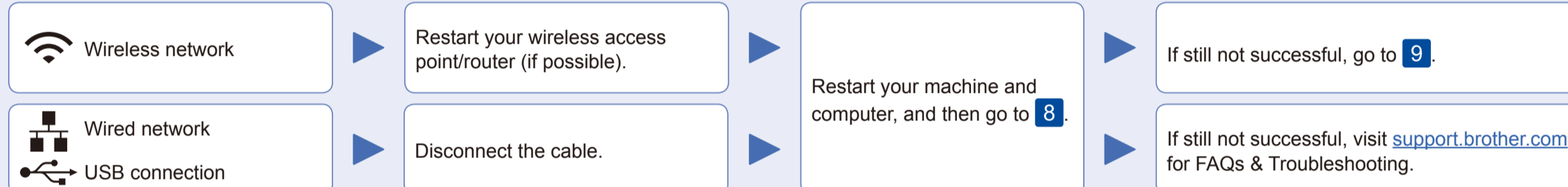
For Windows®:  
If the Brother screen does not appear automatically, go to **Computer (This PC)**. Double-click the CD/DVD-ROM icon, and then double-click **start.exe**.

For Mac:  
For full driver functionality, we recommend choosing the **CUPS driver** when adding a printer.

▶ Finished

Brother regularly updates firmware to add features and apply bug fixes. To check for the latest firmware, visit [support.brother.com/up5](http://support.brother.com/up5).

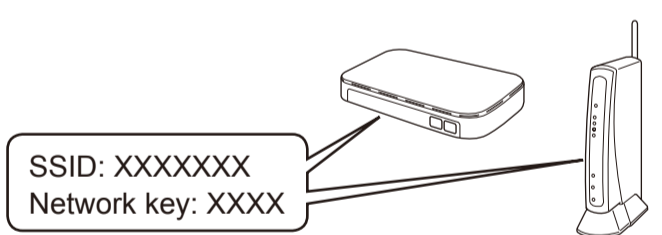
### Can't Connect? Check the following:



## 9 Alternative wireless setup

Find your SSID (Network Name) and Network Key (Password) on your wireless access point/router and write them in the table provided below.

SSID (Network Name)	
Network Key (Password)	



If you cannot find this information, ask your network administrator or wireless access point/router manufacturer.

Press **WiFi** > [Setup Wizard] > [Yes].



Even if you do not have a wireless access point/router, you can connect your device and your machine directly. For additional wireless network support, go to [support.brother.com/wireless-support](http://support.brother.com/wireless-support).

▶ Select the SSID (Network Name) for your access point/router and enter the Network Key (Password).

▶ When the wireless setup is successful, the touchscreen displays [Connected].

▶ If setup is not successful, restart your Brother machine and your wireless access point/router, and repeat **9**.

### For Computer

Go to **8** to install software.

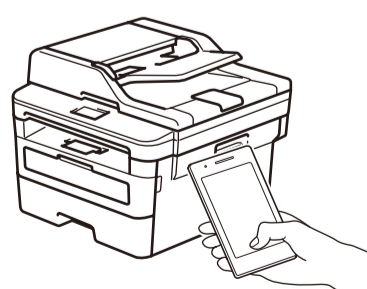
### For Mobile Device

Go to **10** to install apps.

## 10 Print or scan using your mobile device

Your mobile device must be connected to the same wireless network as your Brother machine.

Brother SupportCenter is a mobile app that provides the latest support information for your Brother product. Visit the App Store or Google Play™ to download.



AirPrint is available for Apple device users. You do not need to download any software to use AirPrint. For more information, see the *Online User's Guide*.



Download and install the Mopria® Print Service app from Google Play™ using your Android™ device.



Download and install our free application **Brother iPrint&Scan** from a mobile application store, such as the App Store, Google Play™ or Microsoft® Store using your mobile device.

### Optional apps

You can print from and scan to your mobile device using various apps. (USA only) For more information on apps, visit [www.brother-usa.com/connect](http://www.brother-usa.com/connect). For instructions, see the *Online User's Guide*.



Additional Wireless Support: [support.brother.com/wireless-support](http://support.brother.com/wireless-support)

For FAQs, Troubleshooting, and to download software and manuals, visit [support.brother.com](http://support.brother.com). For product specifications, see the *Online User's Guide*.

© 2017 Brother Industries, Ltd. All rights reserved.

## Free Manuals Download Website

<http://myh66.com>

<http://usermanuals.us>

<http://www.somanuals.com>

<http://www.4manuals.cc>

<http://www.manual-lib.com>

<http://www.404manual.com>

<http://www.luxmanual.com>

<http://aubethermostatmanual.com>

Golf course search by state

<http://golfingnear.com>

Email search by domain

<http://emailbydomain.com>

Auto manuals search

<http://auto.somanuals.com>

TV manuals search

<http://tv.somanuals.com>