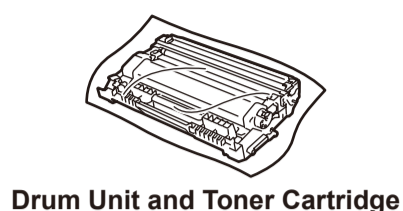
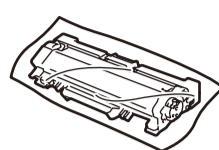




## Unpack the machine and check the components



**Drum Unit and Toner Cartridge**



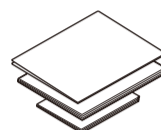
**Toner Cartridge Replacement**  
(For MFC-L2750DWXL model)  
Use the toner cartridge that is pre-installed in the drum unit first.



**Telephone Line Cord**  
(For MFC models)



**Brother Installation Disc**



**Quick Setup Guide  
Reference Guide  
Product Safety Guide**



Watch our Video FAQs for help with setting up your Brother machine:  
[support.brother.com/videos](http://support.brother.com/videos).

**NOTE:**

- Manuals in Spanish for this model are available on the Brother Solutions Center. (USA only): [support.brother.com/manuals](http://support.brother.com/manuals)  
Los manuales en español de este modelo están disponibles en el Brother Solutions Center. (Solamente en los Estados Unidos): [support.brother.com/manuals](http://support.brother.com/manuals)
- The components included in the box may differ depending on your country.
- The available connection interfaces vary depending on the model.
- Interface cables are not included. You must purchase the correct interface cable if you require one.

**USB cable**

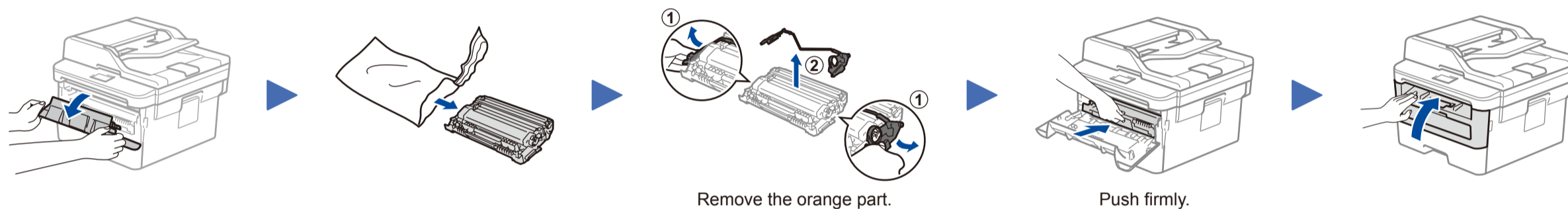
We recommend using a USB 2.0 cable (Type A/B) that is no more than 6 feet (2 meters) long.

**Network cable**

Use a straight-through Category 5 (or greater) twisted-pair cable.

- The illustrations in this *Quick Setup Guide* show the MFC-L2750DW.
- This machine's *Reference Guide* is either printed for you or is available on the Brother Installation Disc included in the carton.

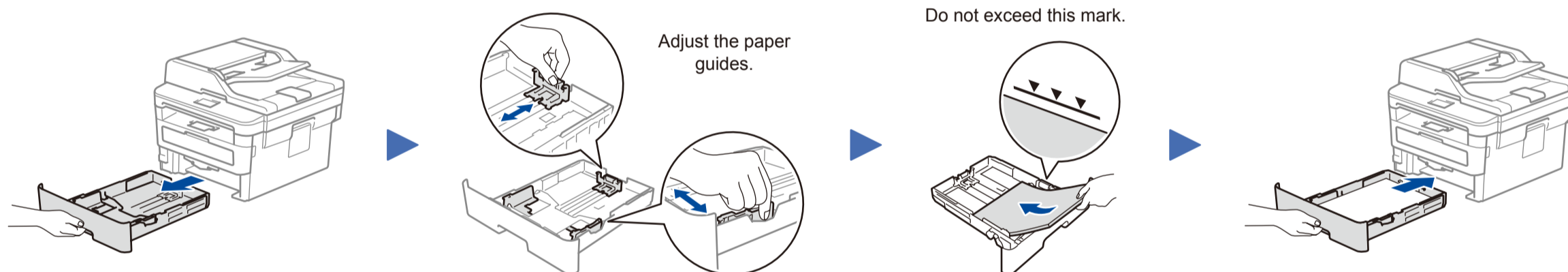
## 1 Remove the packing materials and install the drum unit and toner cartridge assembly



Remove the orange part.

Push firmly.

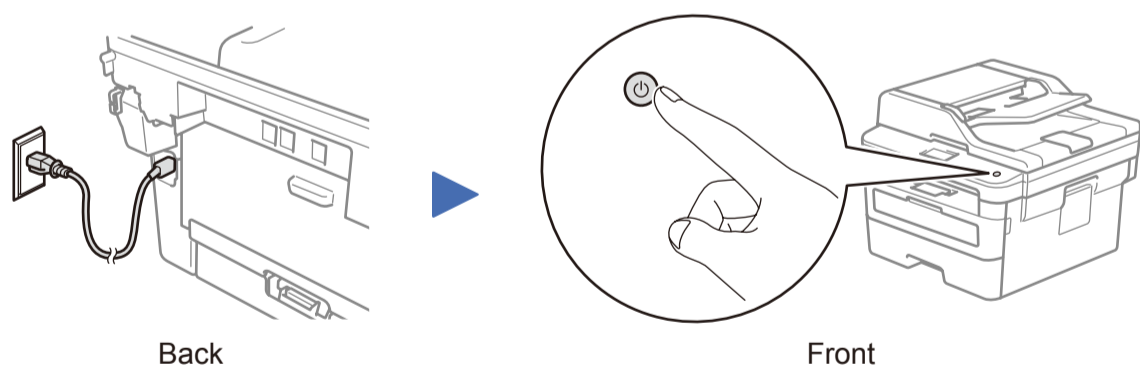
## 2 Load paper in the paper tray



Adjust the paper guides.

Do not exceed this mark.

## 3 Connect the power cord and turn on the machine

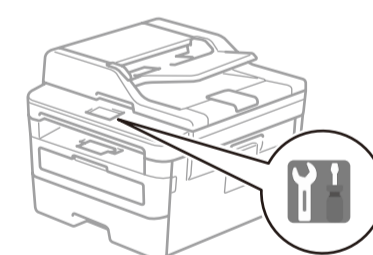


Back

Front

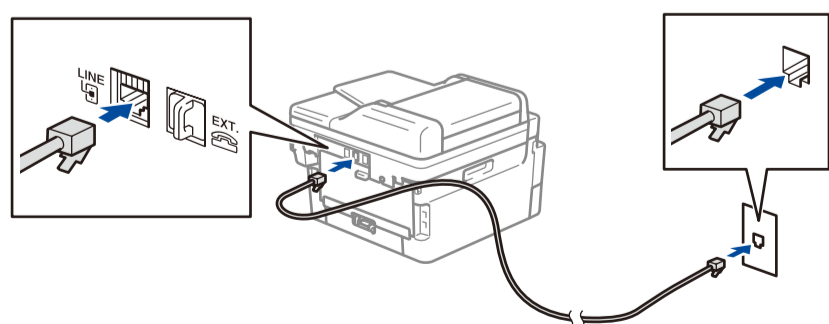
## 4 Select your language (if needed)

1. On the machine's touchscreen, press [Settings] > [All Settings] > [Initial Setup] > [Local Language].
2. Press your language.
3. Press .



## 5 Connect the telephone line cord (for MFC models only)

If you do not plan to use the fax feature on this machine, go to step **7**.



## 6 Configure the machine for faxing (for MFC models only)

If you do not plan to use the fax feature on this machine, go to step **7**.

**NOTE:**

- For more information on using the fax feature, see the *Online User's Guide*.
- Your machine is programmed to automatically receive faxes. To change this default mode, see the *Online User's Guide*.

**A. Set the date and time**

Press [Settings] > [All Settings] > [Initial Setup] > [Date & Time], and then set the date and time.

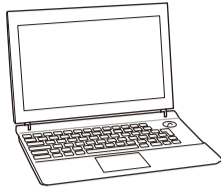
**B. Set the Station ID**

Press [Settings] > [All Settings] > [Initial Setup] > [Station ID], and then set your fax or telephone number and your name.



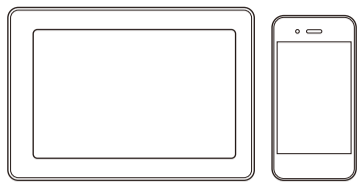
## 7 Select a device to connect to your machine

**Computer**



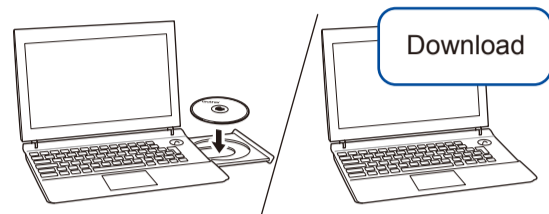
Go to **8** and follow the instructions.

**Mobile Device**



Go to **9** and follow the instructions.

## 8 Connect your computer



Put the installation disc into your CD/DVD drive, or download the Full Driver & Software Package at:

For Windows®: [support.brother.com/windows](http://support.brother.com/windows)  
For Mac: [support.brother.com/mac](http://support.brother.com/mac)

If you are using a recently released operating system on your computer, visit the above websites for updated driver and software information.

Brother regularly updates firmware to add features and apply bug fixes. To check for the latest firmware, visit [support.brother.com/up5](http://support.brother.com/up5).

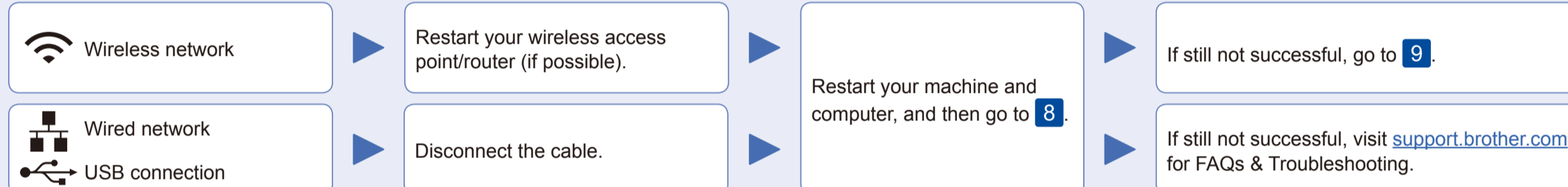
▶ Follow the on-screen instructions and prompts.

▶ Finished

For Windows®:  
If the Brother screen does not appear automatically, go to **Computer (This PC)**. Double-click the CD/DVD-ROM icon, and then double-click **start.exe**.

For Mac:  
For full driver functionality, we recommend choosing the **CUPS driver** when adding a printer.

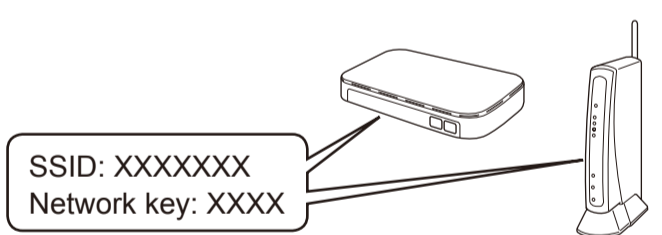
### Can't Connect? Check the following:



## 9 Alternative wireless setup

Find your SSID (Network Name) and Network Key (Password) on your wireless access point/router and write them in the table provided below.

SSID (Network Name)	
Network Key (Password)	



If you cannot find this information, ask your network administrator or wireless access point/router manufacturer.

Press **WiFi** > [Setup Wizard] > [Yes].



Even if you do not have a wireless access point/router, you can connect your device and your machine directly. For additional wireless network support, go to [support.brother.com/wireless-support](http://support.brother.com/wireless-support).

▶ Select the SSID (Network Name) for your access point/router and enter the Network Key (Password).

▶ When the wireless setup is successful, the touchscreen displays [Connected].

▶ If setup is not successful, restart your Brother machine and your wireless access point/router, and repeat **9**.

### For Computer

Go to **8** to install software.

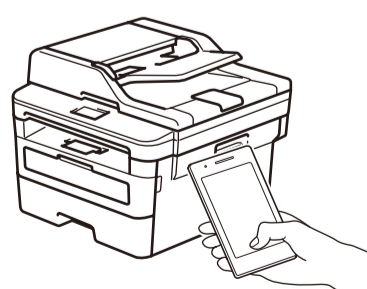
### For Mobile Device

Go to **10** to install apps.

## 10 Print or scan using your mobile device

Your mobile device must be connected to the same wireless network as your Brother machine.

Brother SupportCenter is a mobile app that provides the latest support information for your Brother product. Visit the App Store or Google Play™ to download.



AirPrint is available for Apple device users. You do not need to download any software to use AirPrint. For more information, see the *Online User's Guide*.



Download and install the Mopria® Print Service app from Google Play™ using your Android™ device.



Download and install our free application **Brother iPrint&Scan** from a mobile application store, such as the App Store, Google Play™ or Microsoft® Store using your mobile device.

### Optional apps

You can print from and scan to your mobile device using various apps. (USA only) For more information on apps, visit [www.brother-usa.com/connect](http://www.brother-usa.com/connect). For instructions, see the *Online User's Guide*.



Additional Wireless Support: [support.brother.com/wireless-support](http://support.brother.com/wireless-support)

For FAQs, Troubleshooting, and to download software and manuals, visit [support.brother.com](http://support.brother.com). For product specifications, see the *Online User's Guide*.

© 2017 Brother Industries, Ltd. All rights reserved.

## Free Manuals Download Website

<http://myh66.com>

<http://usermanuals.us>

<http://www.somanuals.com>

<http://www.4manuals.cc>

<http://www.manual-lib.com>

<http://www.404manual.com>

<http://www.luxmanual.com>

<http://aubethermostatmanual.com>

Golf course search by state

<http://golfingnear.com>

Email search by domain

<http://emailbydomain.com>

Auto manuals search

<http://auto.somanuals.com>

TV manuals search

<http://tv.somanuals.com>