

High-Fidelity Wireless Headphones



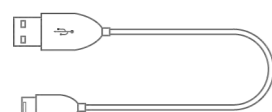
User Guide

SBT651-HP

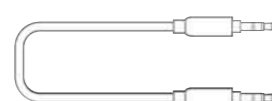
In the Box



Wireless Headphones

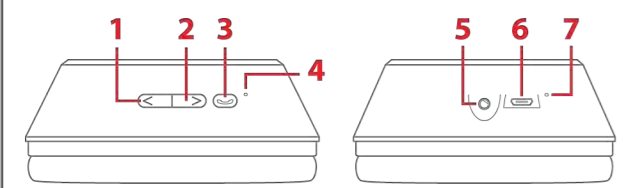


Micro-USB Charging Cable



3.5mm Auxiliary Cable

Location of Controls



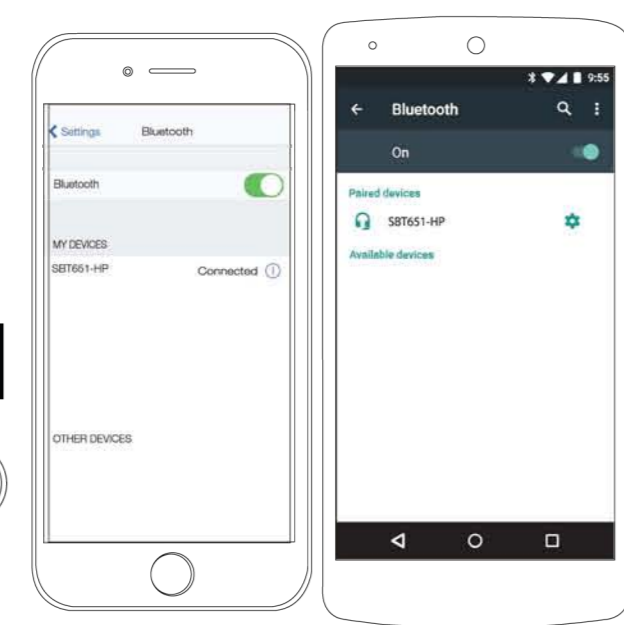
- [<] Button:
Long Press - **Increase** volume
Quick Press - Skip to **previous** track
- [>] Button:
Long Press - **Decrease** volume
Quick Press - Skip to **next** track
- [⏸] Button:
Long Press - Power headphones ON/OFF,
Quick Press - Play/pause playback,
Answer/end phone calls
- LED Indicator
- 3.5mm Auxiliary Input Jack
- Micro-USB Charging Port
- Microphone

Pairing the Headphones

- Long press the [⏸] button on the side of the headphones. A tone will be heard and the LED indicator will quickly **flash RED and BLUE**.
- Set your mobile device to search for Bluetooth devices. When your mobile device finds the headphones, select **SBT651-HP** from the list of found devices.
- After a successful pairing, a voice will be heard and the LED indicator will **slowly flash BLUE**.

If a previously paired device is in range when the headphones are turned on, they will connect to it automatically.

On iOS or Android Devices
• Go to **Settings** -> **Bluetooth**

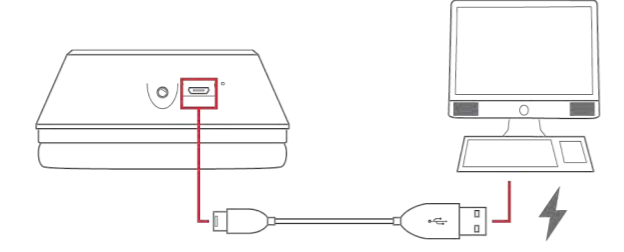


The screenshots above are typical of many Bluetooth-enabled devices in the market today, and are used to assist in the explanation of the pairing process. Your Bluetooth-enabled device's interface and interaction with the headphones may differ slightly from the illustrations above.

Charging the Headphones

Attach the small connector of the supplied micro-USB charging cable to the micro-USB charging port on the right ear piece. Attach the large connector to the USB port on a computer, USB charging device, or **5V USB adapter**.

The charging LED indicator will turn **RED** while charging and turn **OFF** when fully charged.



- [<] Button:
Long Press - **Increase** volume
Quick Press - Skip to **previous** track
- [>] Button:
Long Press - **Decrease** volume
Quick Press - Skip to **next** track
- [⏸] Button:
Long Press - Power headphones ON/OFF,
Quick Press - Play/pause playback,
Answer/end phone calls
- LED Indicator
- 3.5mm Auxiliary Input Jack
- Micro-USB Charging Port
- Microphone

Using the Headphones

Make sure you charge your headphones for at least 2 - 3 hours before using it for the first time.

Powering ON/OFF
• Turn the device ON by long pressing the [⏸] button. A tone will indicate that the headphones are powered ON.
• Turn the device OFF by long pressing the [⏸] Button.

NOTE: To save power, the headphones will go into sleep mode after a period of inactivity. While in sleep mode, the LED indicator will **intermittently flash BLUE**. To wake the device press the [⏸] button.

Answering Phone Calls
• To answer a phone call quick press the [⏸] button.
• To hang up, quick press the [⏸] button. Playback will resume automatically.

Playing Music
To enjoy music wirelessly on your headphones, make sure that they are properly paired to your Bluetooth-enabled device. If you are pairing the device for the first time, please consult the **Pairing the Headphones** part of this user guide.

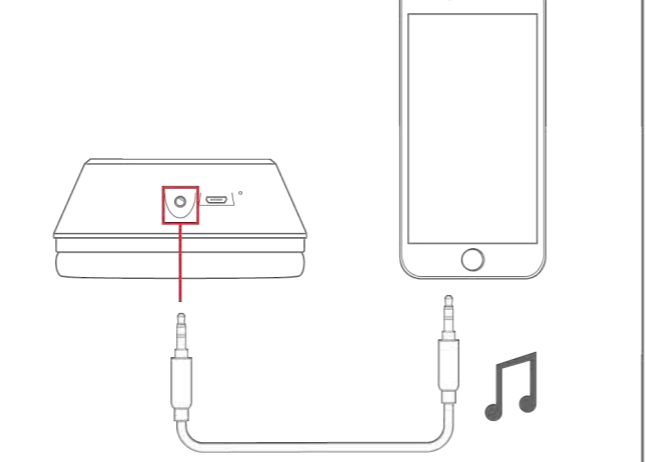
Playing/Pausing Music
• Quick press the [⏸] button to pause playback.
• Quick press the [⏸] button again to resume playback.

Skipping Songs
• Quick press the [<] button to go to the **previous** song.
• Quick press the [>] button to go to the **next** song.

Adjusting the Volume
• Long press the [>] to **decrease** the volume of playback.
• Long press the [<] to **increase** the volume of playback.

Using as Wired Headphones

Plug one end of the supplied 3.5mm auxiliary cable into the 3.5mm auxiliary input jack on the right ear piece. Plug the other end into the headphone jack on your media-playing device.



Connecting the audio cable will override Bluetooth mode if it is enabled. When the cable is disconnected, the headphones will automatically reconnect to the last paired device if Bluetooth mode is enabled.

Legal Information

READ CAREFULLY AND KEEP THIS MANUAL

Note: This equipment has been tested and found to comply with the limits for a Class B digital device, pursuant to part 15 of the FCC Rules. These limits are designed to provide reasonable protection against harmful interference in a residential installation. This equipment generates, uses and can radiate radio frequency energy and, if not installed and used in accordance with the instructions, may cause harmful interference to radio communications. However, there is no guarantee that interference will not occur in a particular installation. If this equipment does cause harmful interference to radio or television reception, which can be determined by turning the equipment off and on, the user is encouraged to try to correct the interference by one or more of the following measures:

- Reorient or relocate the receiving antenna.
- Increase the separation between the equipment and receiver.
- Connect the equipment into an outlet on a circuit different from that to which the receiver is connected.
- Consult the dealer or an experienced radio/TV technician for help.

Caution: Any changes or modifications not expressly approved could void the user's authority to operate the equipment.

This device complies with Part 15 of the FCC Rules. Operation is subject to the following two conditions:
(1) This device may not cause harmful interference, and
(2) this device must accept any interference received, including interference that may cause undesired operation.

The device has been evaluated to meet general RF exposure requirement. The device can be used in portable exposure condition without restriction.

WARNING Li-ion Battery Inside
This product is fitted with a Li-ion battery. Do not damage, open, or dismantle the battery and do not use it in damp and/or corrosive conditions. Use only with compatible chargers. Never dispose of batteries in a fire, and never expose them to high temperatures. Do not expose the product to temperatures exceeding 60°C (140°F).



The crossed-out garbage bin symbol means that you must not dispose of this product together with unsorted household waste.

Rain/Moisture Warning
• Do not expose the unit to extreme temperatures (heat or cold), open flames, humid conditions, or wet conditions.
• Do not submerge in water.
• Do not open this product or attempt to repair the unit yourself should it not be working.

Questions and Customer Support

For further assistance or any troubleshooting, visit our website:

www.SouthernTelecom.com
Click on **Product Support**

Limited Warranty

90 Days Limited Warranty
In the unlikely event that this product is defective, or does not perform properly, you may within ninety (90) days from your original date of purchase return it to the authorized service center for repair or exchange.

TO OBTAIN WARRANTY SERVICE:

- Go to our website portal to receive an SRO number.
- Provide proof of the date of purchase within the package (dated bill of sale).
- Prepay all shipping costs to the authorized service center, and remember to insure your return.
- Include a return shipping address (no P.O. Boxes), a telephone contact number, and the defective unit within the package.
- Describe the defect or reason you are returning the product.

Your product will be repaired or replaced, at our option, for the same or similar model of equal value if examination by the service center determines this product is defective. Products received damaged as a result of shipping will require you to file a claim with the carrier.

The shipping address of the authorized service center is:
Customer Service Dept. 36
c/o Southern Telecom
400 Kennedy Drive
Sayreville NJ 08872

Should have any questions or problems concerning this product, please visit our website:

www.SouthernTelecom.com
Click on **Product Support**

Warranty Service Not Provided
This warranty does not cover damage resulting from accident, misuse, abuse, improper installation or operation, lack of reasonable care, and unauthorized modification. This warranty is voided in the event any unauthorized person opens, alters or repairs this product. All products being returned to the authorized service center for repair must be suitably packaged.

Limitation of Warranty
• THE WARRANTY STATED ABOVE IS THE ONLY WARRANTY APPLICABLE TO THIS PRODUCT. ALL OTHER WARRANTIES, EXPRESS OR IMPLIED (INCLUDING ALL IMPLIED WARRANTIES OF MERCHANTABILITY OR FITNESS FOR A PARTICULAR PURPOSE) ARE HEREBY DISCLAIMED. NO VERBAL OR WRITTEN INFORMATION GIVEN BY AIT, INC. ITS AGENTS, OR EMPLOYEES SHALL CREATE A GUARANTY OR IN ANY WAY INCREASE THE SCOPE OF THIS WARRANTY.

• REPAIR OR REPLACEMENT AS PROVIDED UNDER THIS WARRANTY IS THE EXCLUSIVE REMEDY OF THE CONSUMER. AIT, INC. SHALL NOT BE LIABLE FOR INCIDENTAL OR CONSEQUENTIAL DAMAGES RESULTING FROM THE USE OF THIS PRODUCT OR ARISING OUT OF ANY BREACH OF ANY EXPRESS OR IMPLIED WARRANTY ON THIS PRODUCT. THIS DISCLAIMER OF WARRANTIES AND LIMITED WARRANTY ARE GOVERNED BY THE LAWS OF THE STATE OF NEW YORK. EXCEPT TO THE EXTENT PROHIBITED BY APPLICABLE LAW, ANY IMPLIED WARRANTY OF MERCHANTABILITY OR FITNESS FOR A PARTICULAR PURPOSE ON THIS PRODUCT IS LIMITED TO THE APPLICABLE WARRANTY PERIOD SET FORTH ABOVE.

Some states do not allow the exclusion nor limitation of incidental or consequential damages, or limitations on how long an implied warranty lasts so the above limitations on exclusions may not apply to you. This warranty gives you specific legal rights, and you also may have other rights that vary from state to state.

Free Manuals Download Website

<http://myh66.com>

<http://usermanuals.us>

<http://www.somanuals.com>

<http://www.4manuals.cc>

<http://www.manual-lib.com>

<http://www.404manual.com>

<http://www.luxmanual.com>

<http://aubethermostatmanual.com>

Golf course search by state

<http://golfingnear.com>

Email search by domain

<http://emailbydomain.com>

Auto manuals search

<http://auto.somanuals.com>

TV manuals search

<http://tv.somanuals.com>